The background of the slide is an architectural rendering of a modern, multi-story residential building. The building features a mix of materials, including light-colored panels, dark grey accents, and large glass windows. It has a stepped, modern design with multiple levels and balconies. The sky is a dark, cloudy grey. A semi-transparent orange banner is overlaid across the middle of the image, containing the title and meeting information.

TEACHER HOUSING AT EXISTING SCHOOL SITES

San Mateo Foster City School Board
November 17, 2016

HKIT

SCHOOL EXPERIENCE

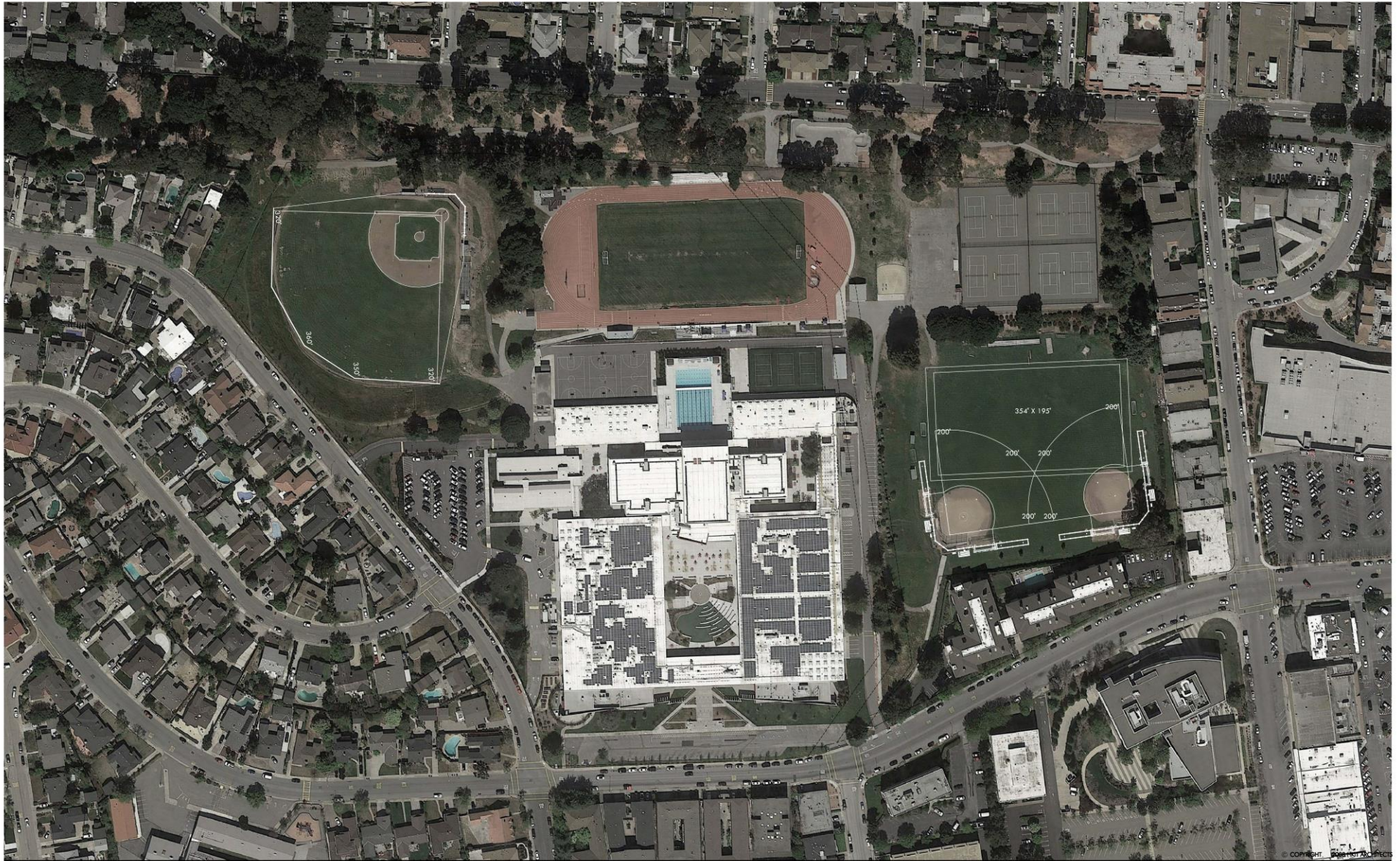


HKIT



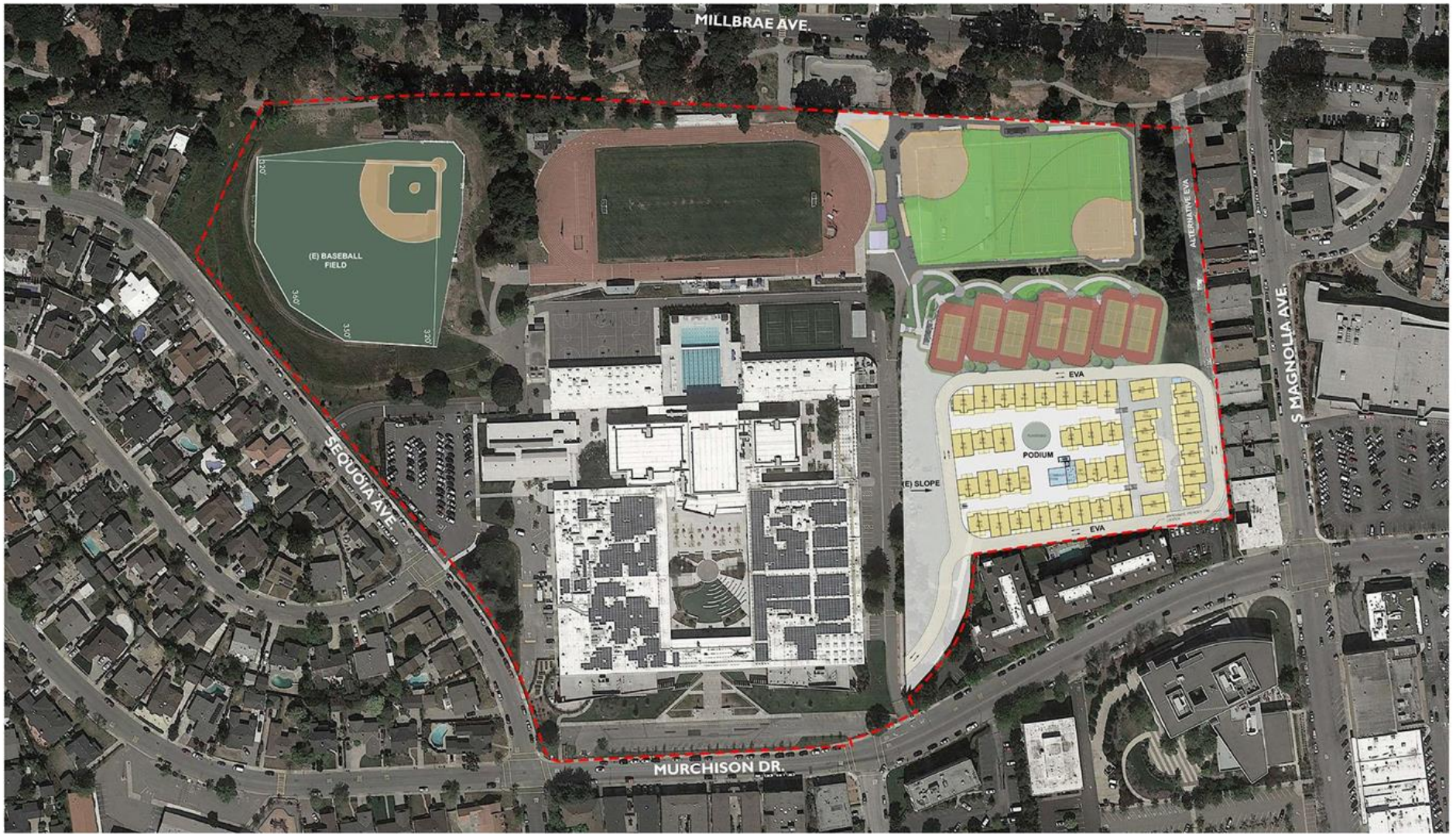
HOUSING EXPERIENCE





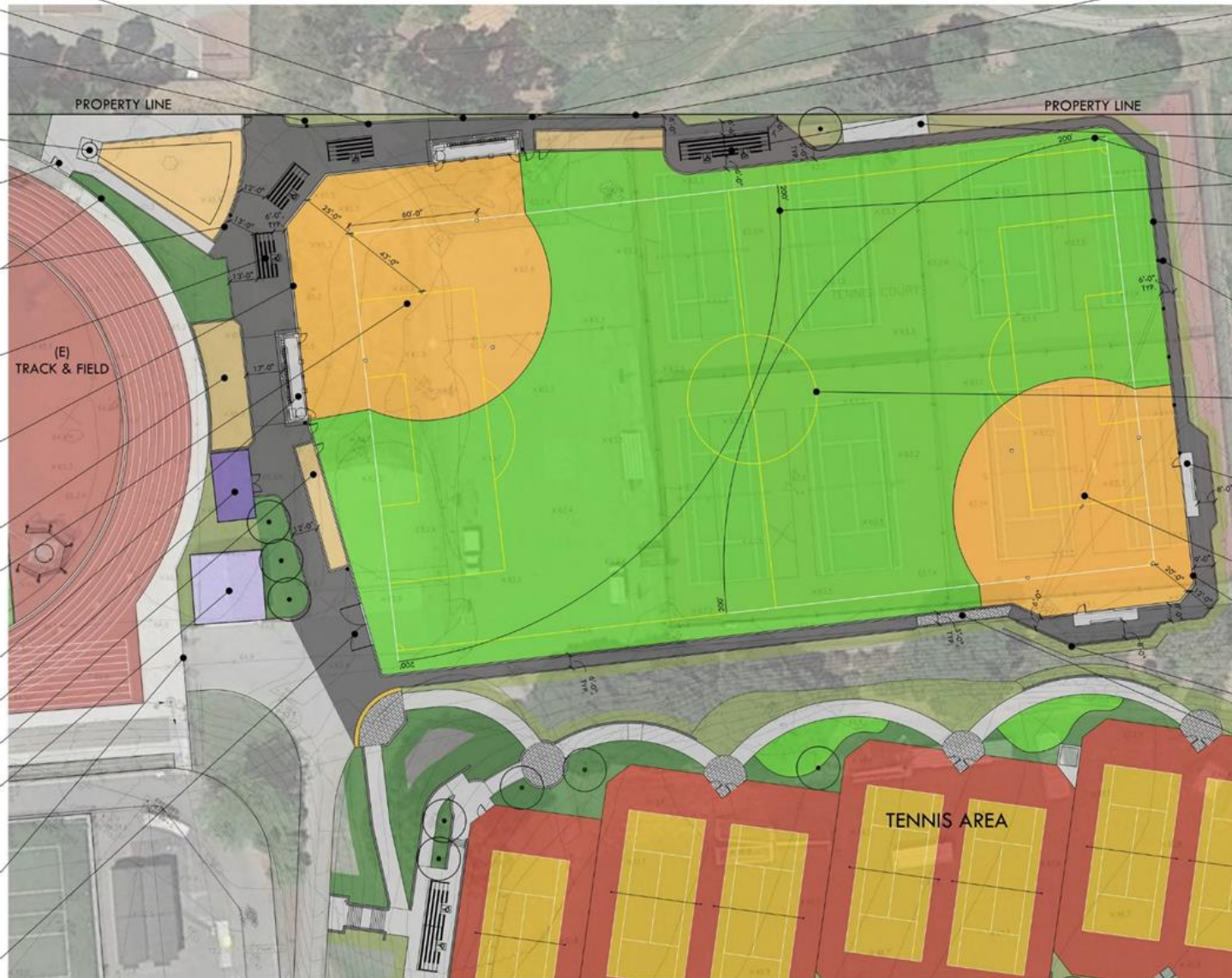
EXISTING SITE PLAN

MILLS HIGH SCHOOL
SMUHSD • TEACHER HOUSING



© COPYRIGHT 2016 HKIT ARCHITECTS

- 4' RETAINING WALL
- 18" SEATWALL
- BACKSTOP NETTING
TENSION POLES, TYP.
- SHOTPUT RELOCATION
- 4' WIDE PEDESTRIAN
SWING GATE, TYP.
- 8' TALL CHAIN LINK
FENCE, TYP.
- SOFTBALL SPECTATOR
SEATING, TYP.
- BACKSTOP WALL &
25' NETTING, TYP.
- BATTING CAGES
- VARSITY SOFTBALL
FIELD
- CMU DUGOUT, TYP.
- STORAGE BUILDING
- BULLPEN, TYP.
- (E) MAINTENANCE
BUILDING
- ACCESS GATES TO
TRACK & FIELD
- 20' WIDE DOUBLE
VEHICULAR GATE



- 3' RETAINING WALL
- 2' RETAINING WALL
- SOCCER SPECTATOR
SEATING
- GOAL STORAGE AREA
- 200' OUTFIELD
- 4' TALL CHAIN LINK
FENCE, TYP.
- PROTECTIVE NETTING
TENSION POLES, TYP.
- 65 YD. X 118 YD.
SOCCER FIELD
- CHAIN LINK DUGOUT,
TYP.
- JV SOFTBALL FIELD
- BACKSTOP WALL &
25' NETTING, TYP.
- RETAINING WALL
- PAVERS FOR OAK
ROOT PROTECTION



NORTH

September 16, 2016

Soccer / Softball Field - Schematic Plan Mills High School San Mateo Union High School District Millbrae, CA



LANDSCAPE ARCHITECTURE
CIVIL ENGINEERING
SPORT PLANNING & DESIGN
2455 The Alameda, Ste. 200
Sunnyvale, CA 95050
tel: 408.985.7200
fax: 408.985.7260
www.verdedesign.com



NORTH

September 16, 2016

Tennis - Schematic Plan Mills High School San Mateo Union High School District Millbrae, CA



SITE PLAN

MILLS HIGH SCHOOL
SMUHS - TEACHER & STAFF HOUSING



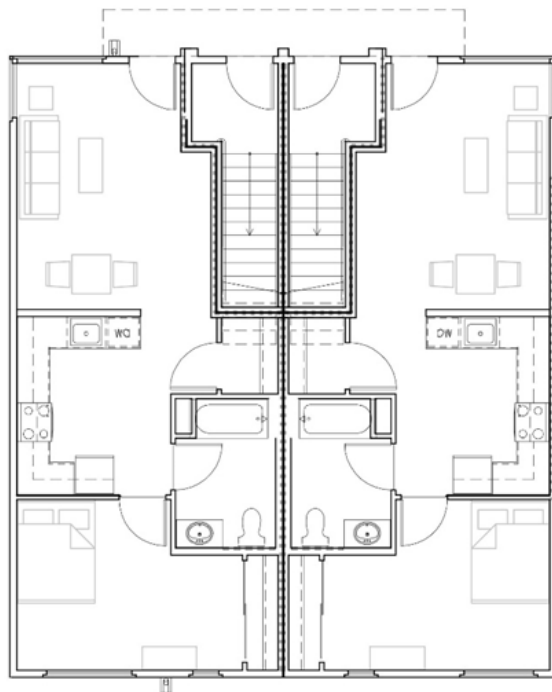
SCHEME 5			
	UNIT NUM.	AREA/UNIT (SF.)	SUB. AREA (SF.)
1 BR FLAT	83	703	58,349
2 BR FLAT	19	872	16,568
2 BR T.M.	38	1,103	41,914
SUBTOTAL	140		116,831
COMM/COMMON SPACE			1,738
TOTAL			118,569
PODIUM			76,955
AREA CARS			200



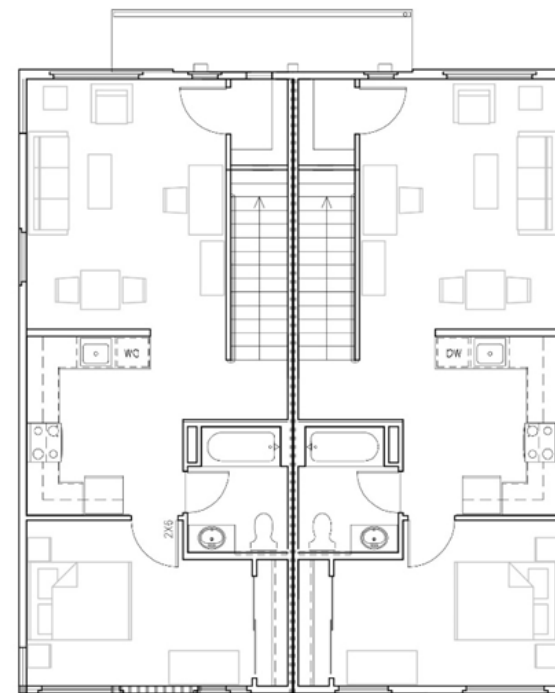
© COPYRIGHT 2014 HKIT ARCHITECTS

PARKING PLAN

MILLS HIGH SCHOOL
SMUHS - TEACHER & STAFF HOUSING



1ST FLOOR 1BR-FLAT



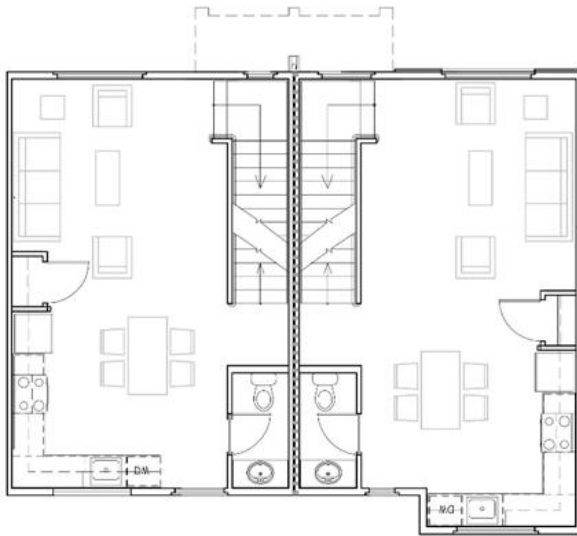
2ND FLOOR 1BR-FLAT



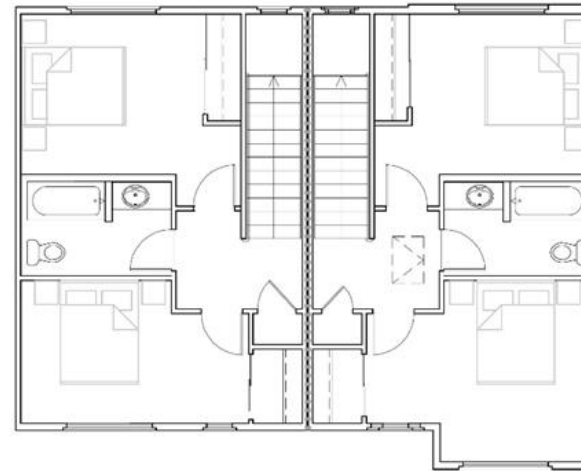
© COPYRIGHT 2016 HKIT ARCHITECTS

HOUSING UNIT PLANS

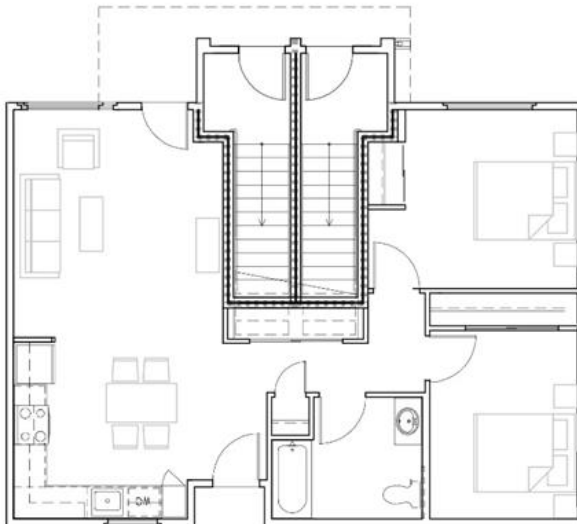
MILLS HIGH SCHOOL
SMUHS - TEACHER & STAFF HOUSING



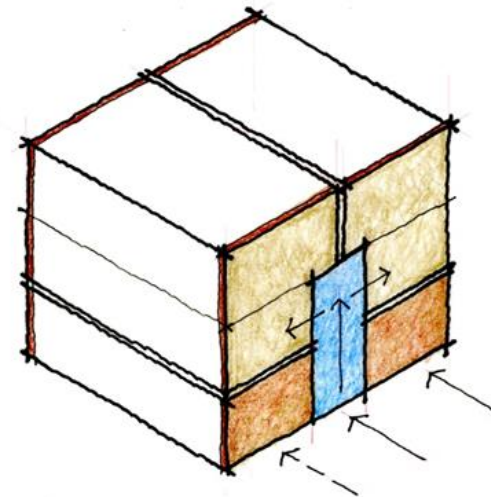
2ND FLOOR 2BR-TOWNHOUSE



3RD FLOOR 2BR-TOWNHOUSE



1ST FLOOR 2BR-FLAT



© COPYRIGHT 2016 HKIT ARCHITECTS

HOUSING UNIT PLANS

MILLS HIGH SCHOOL
SMUHSD - TEACHER & STAFF HOUSING



AERIAL VIEW

© COPYRIGHT 2016 HKIT ARCHITECTS

PERSPECTIVE VIEWS

MILLS HIGH SCHOOL
SMUHSD - TEACHER & STAFF HOUSING



© COPYRIGHT 2016 HKIT ARCHITECTS

PERSPECTIVE VIEWS

MILLS HIGH SCHOOL
SMUHSD - TEACHER & STAFF HOUSING



PODIUM LEVEL VIEW

© COPYRIGHT 2016 HKIT ARCHITECTS

PERSPECTIVE VIEWS

MILLS HIGH SCHOOL
SMUHSD - TEACHER & STAFF HOUSING