

SAN PEDRO ELEMENTARY SCHOOL PROGRAM FOR NEW MAIN & CLASSROOM BUILDINGS – AUGUST 17, 2017

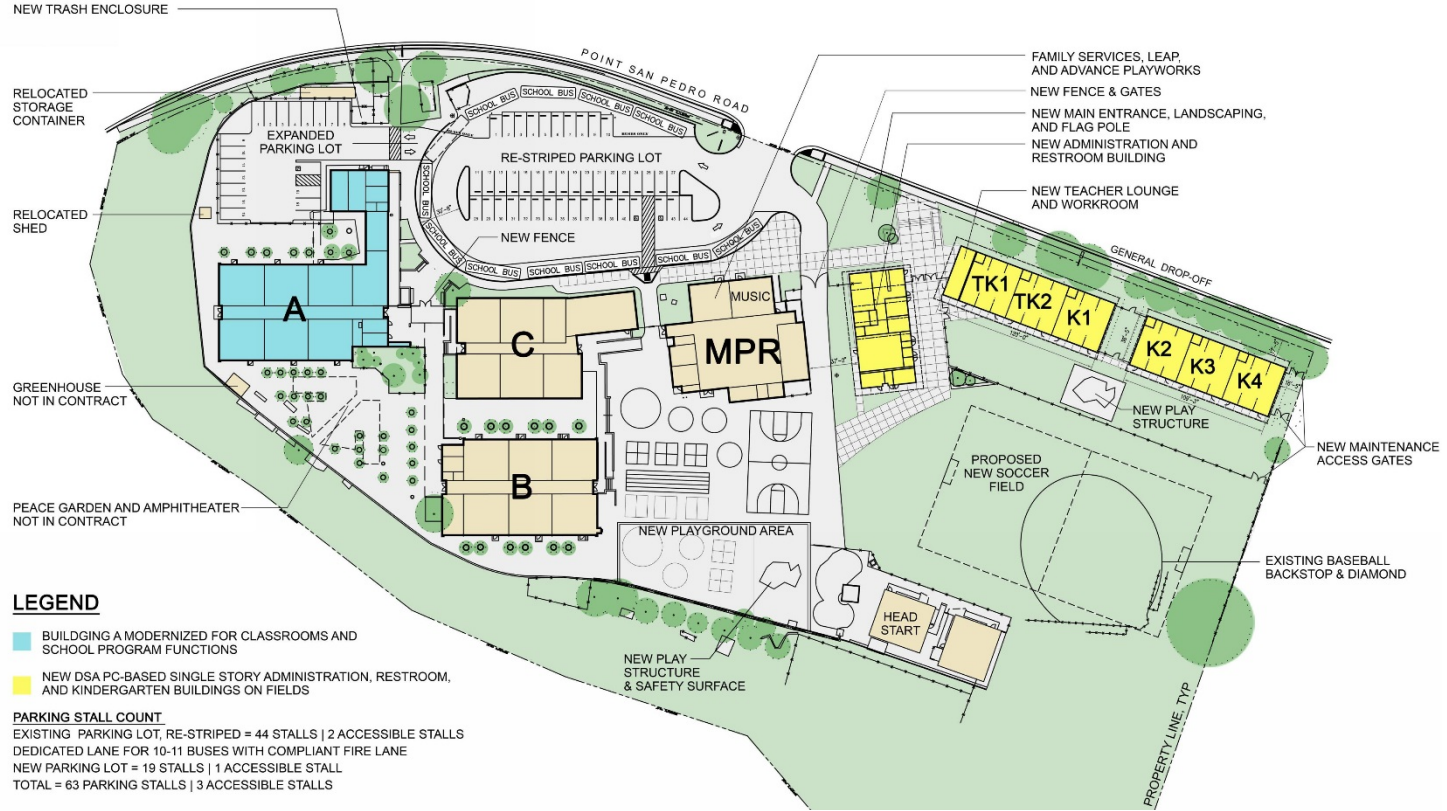


FEATURES OF THE NEW DESIGN

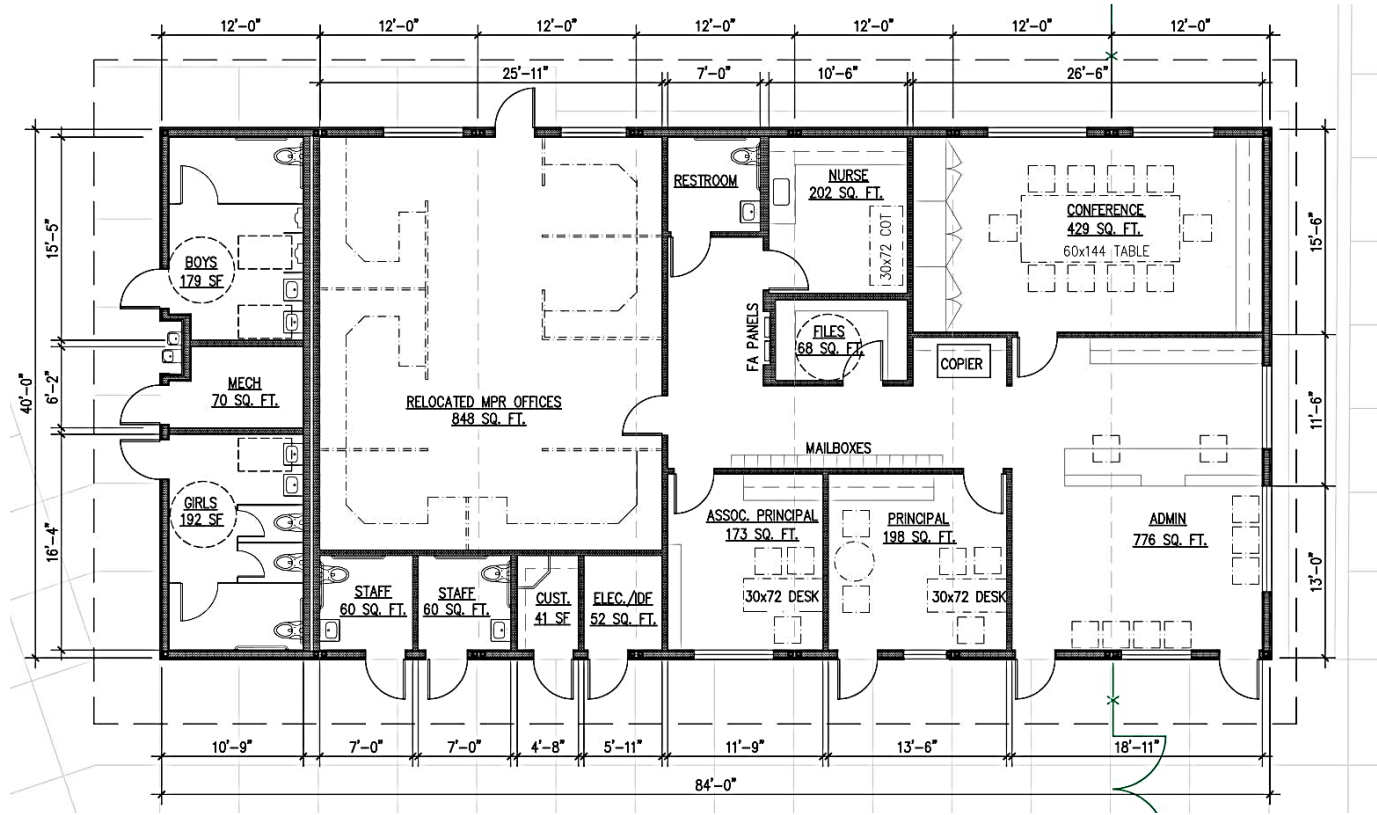
KEY POINTS:

- Replace Portables with permanent classrooms
- Admin and campus entrance clear
- Updated drop-off
- Additional Parking
- Classroom Modernization

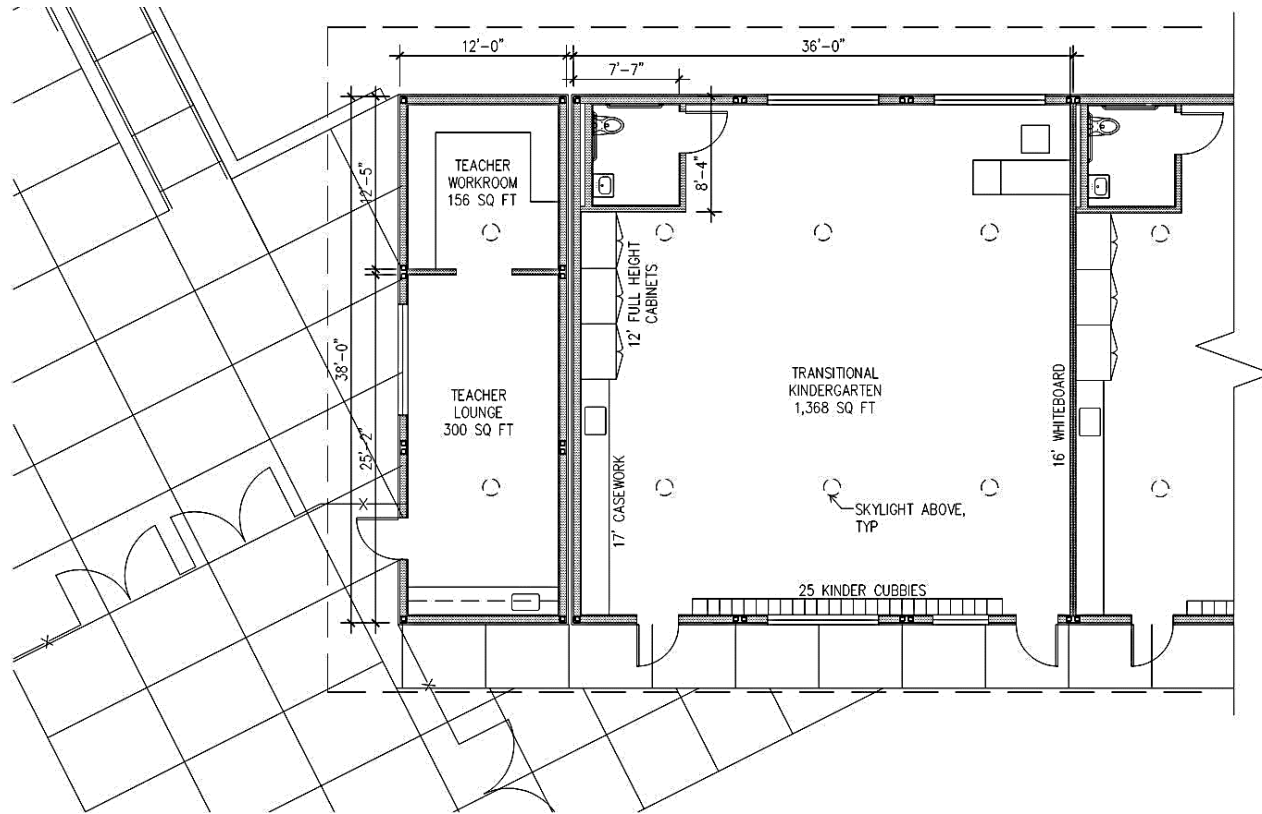
NEW SITE PLAN



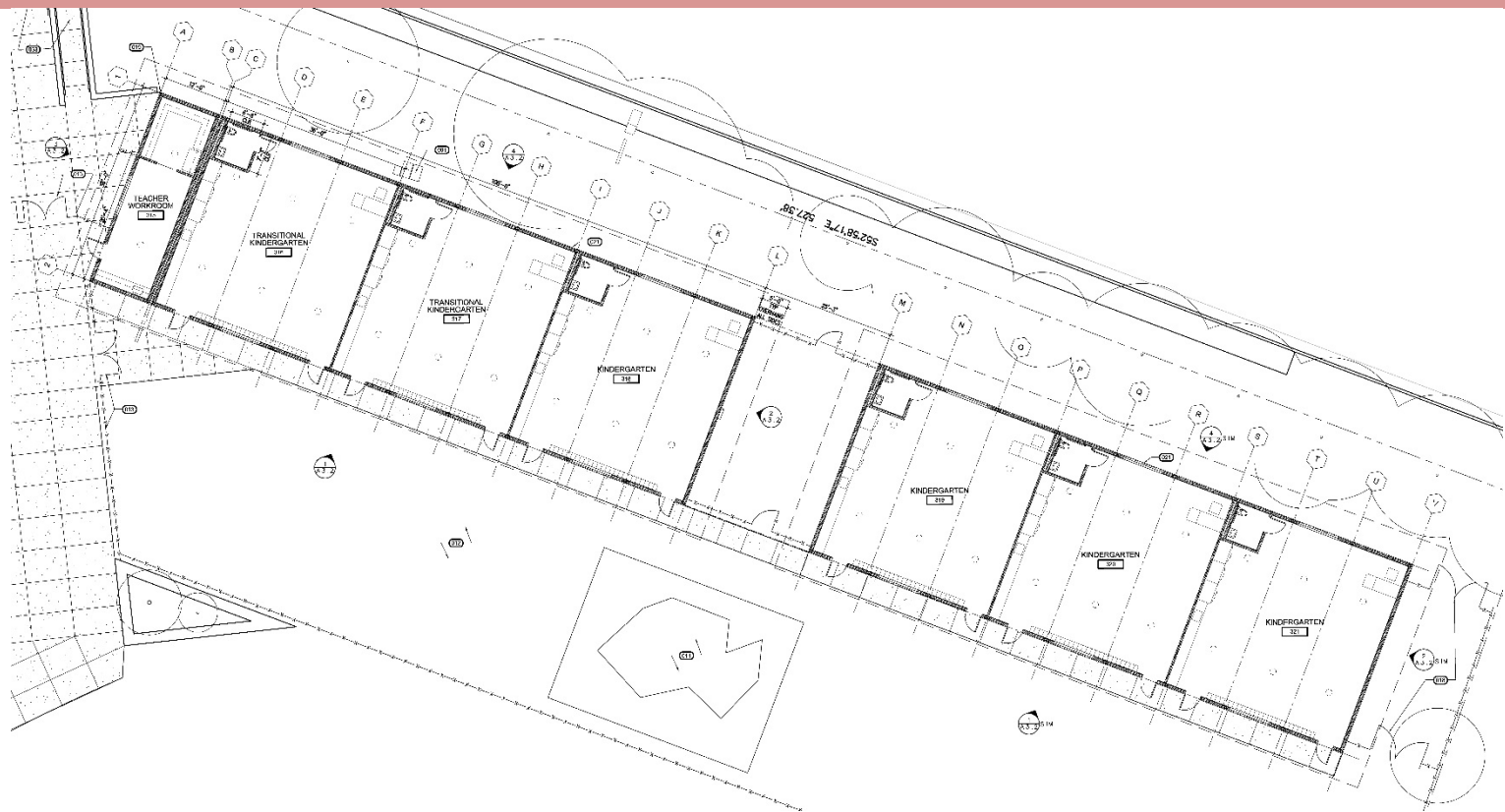
NEW ADMINISTRATION BUILDING



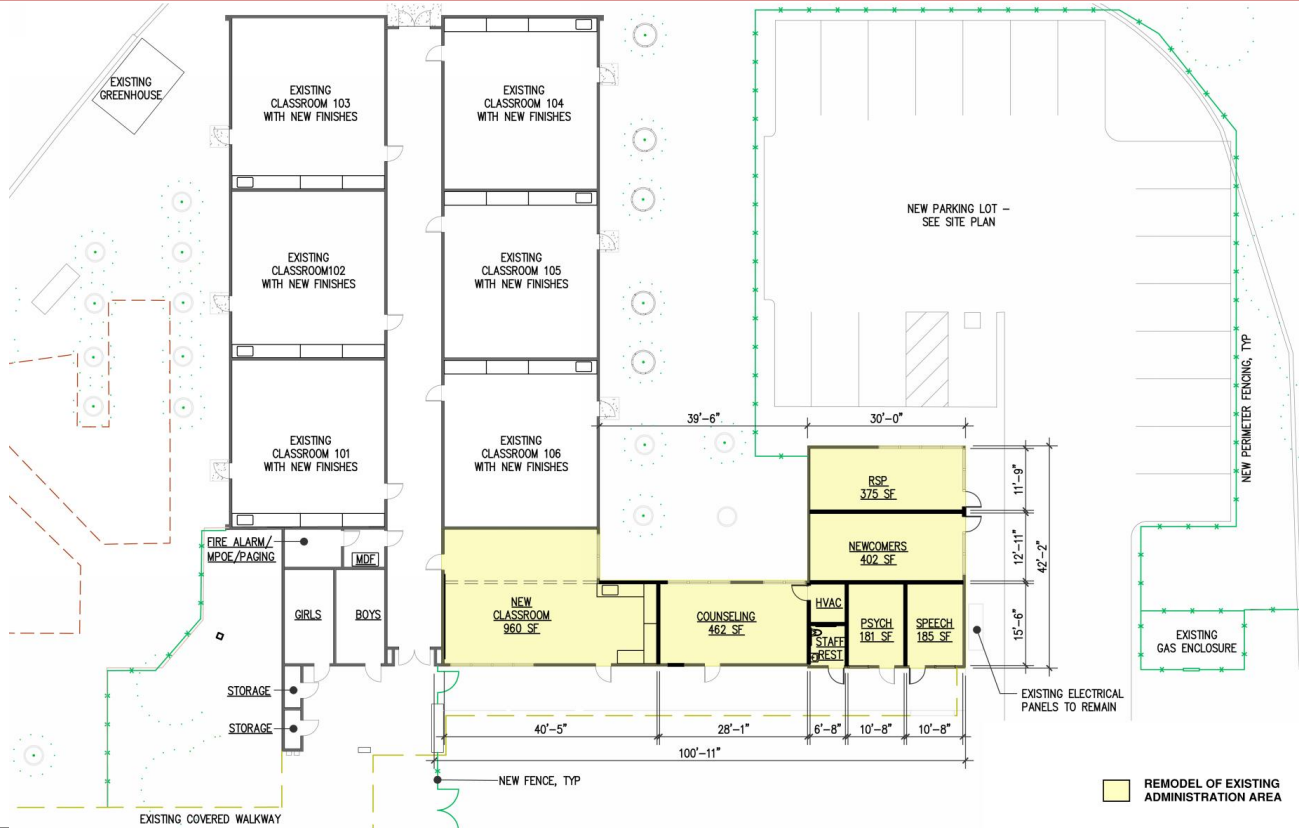
NEW ADMINISTRATION & KINDERGARTEN CLASSROOM WING



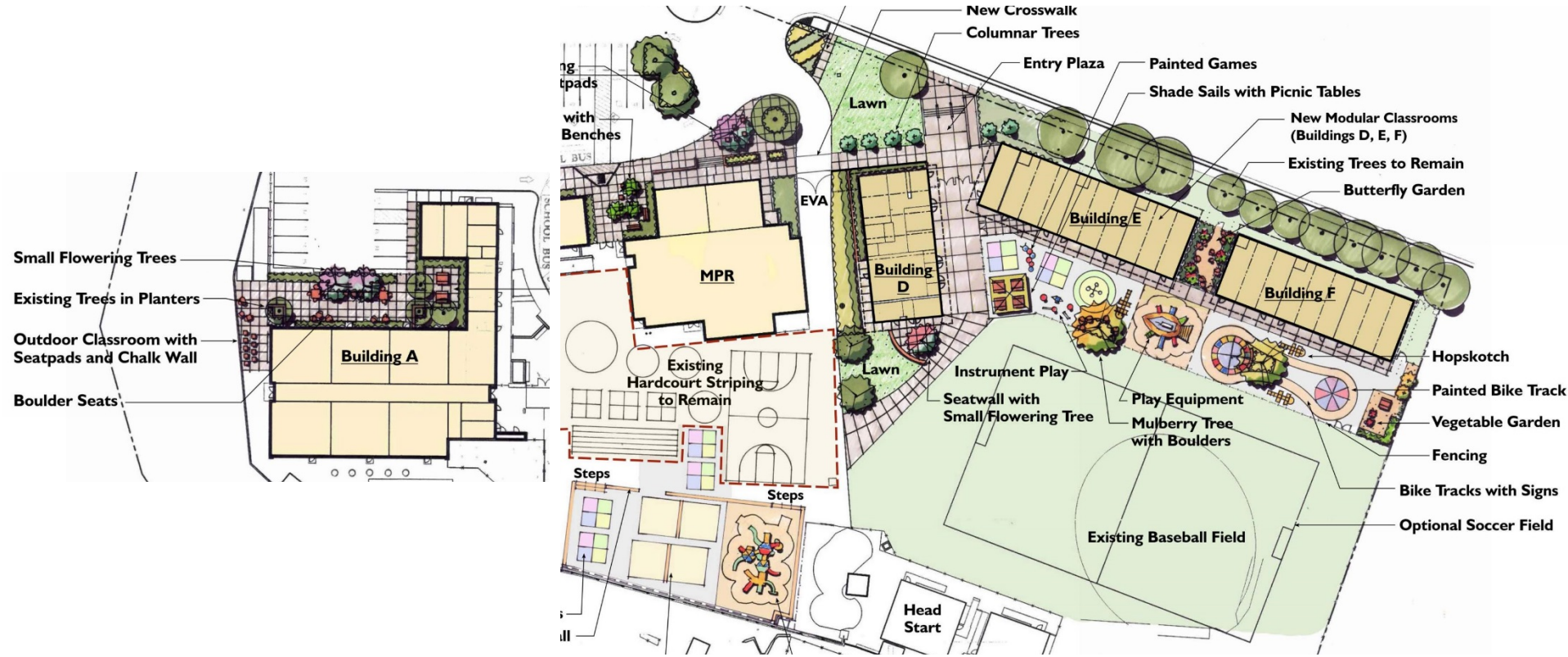
NEW ADMINISTRATION & KINDERGARTEN CLASSROOM WING



MODERNIZATION AT BUILDING A



NEW LANDSCAPE



NEW MAIN ENTRANCE



NEW MAIN ENTRANCE



EXAMPLES FROM MODULAR COMPANY - EXTERIOR



EXAMPLES FROM MODULAR COMPANY - INTERIOR



TWO SAMPLE MODERNIZED CLASSROOMS

KENSINGTON ELEMENTARY SCHOOL



OLD MILL ELEMENTARY SCHOOL



COST ESTIMATE

Cost estimate is a little over **\$11.3 million** for new modulares and modernization.

The bond measure funds for San Pedro Elementary School is **\$11.77 million**.

ADD ALTERNATES

We are considering:

1. Providing new HVAC in Building A classrooms
2. Replacing the ceilings and lighting in Building A classrooms
3. Replacing all casework in Building A classrooms
4. Replacing windows in Building A classrooms



Thank you!