

# Measure G Bond Program Bubb, Huff and Landels Schematic Design



Presented by

Dr. Robert Clark, Associate Superintendent/Chief Business Officer

Mary Ann Duggan, Director/Capital Projects

Todd Lee, Program Manager, GWC

Marcus Hibser, Architect, HYA

2 June 2016

# Process Outline

- Hibser Yamauchi Architecture (HYA) has been working to create the schematic design for Bubb, Huff and Landels.
- Each school site conducted two community meetings
  - Meeting #1 – Invited parent leadership (ELAC, PTA, SSC), a staff member, the principal
  - Meeting #2 – Open to all community members
- Presentation of Schematic Design for Bubb, Huff and Landels
- Board action to allow architect and staff to continue working over the summer

# Bubb Existing Site Plan



## EXISTING SITE LAYOUT



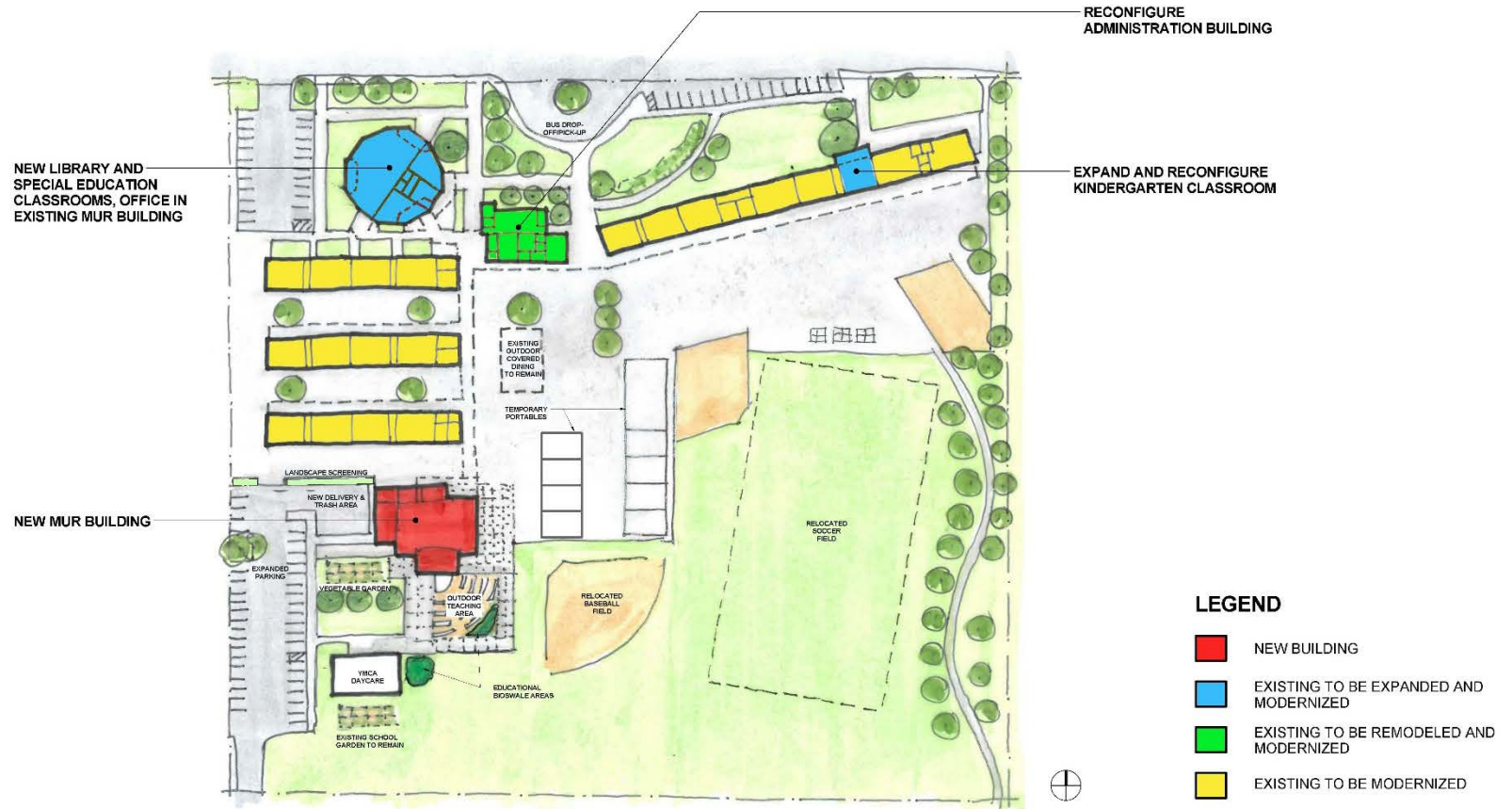
### Benjamin Bubb Elementary School Campus Modernization

Mountain View Whisman School District  
Board of Trustees Meeting June 2, 2016

HIBSER YAMAUCHI  
Architects, Inc.



# Bubb Proposed Schematic Design



## PRELIMINARY SITE LAYOUT



### Benjamin Bubb Elementary School Campus Modernization

Mountain View Whisman School District  
Board of Trustees Meeting June 2, 2016

HIBSER YAMAUCHI  
Architects, Inc.



# Huff Existing Site Plan



**EXISTING SITE LAYOUT**



## Frank L. Huff Elementary School Campus Modernization

Mountain View Whisman School District  
Board of Trustees Meeting June 2, 2016

HIBSER YAMAUCHI  
Architects, Inc.





# Huff Proposed Schematic Design



## PRELIMINARY SITE LAYOUT



### Frank L. Huff Elementary School Campus Modernization

Mountain View Whisman School District  
Board of Trustees Meeting June 2, 2016

HIBSER YAMAUCHI  
Architects, Inc.



# Landels Existing Site Plan



## EXISTING SITE LAYOUT



### Edith Landels Elementary School Campus Modernization

Mountain View Whisman School District  
Board of Trustees Meeting June 2, 2016

HIBSER YAMAUCHI  
Architects, Inc.



# Landels Proposed Schematic Design



## PRELIMINARY SITE LAYOUT



### Edith Landels Elementary School Campus Modernization

Mountain View Whisman School District  
Board of Trustees Meeting June 2, 2016

HIBSER YAMAUCHI  
Architects, Inc.





# Budget

School Site	Budgeted Cost (5% reduction)	Estimated Cost
Bubb Elementary School	\$17,309,570	\$18,328,260
Huff Elementary School	\$16,897,054	\$17,697,383
Landels Elementary School	\$16,362,594	\$17,666,773
Total	\$50,569,218	\$53,692,416
Over Budget		(\$3,123,198)

# Questions/Discussion/Comments

