

JAMS 2017-09-11

SMC /SMMUSD JOINT BOARD MEETING

HGA Architects

SITE

HGA Architects



HGA Architects

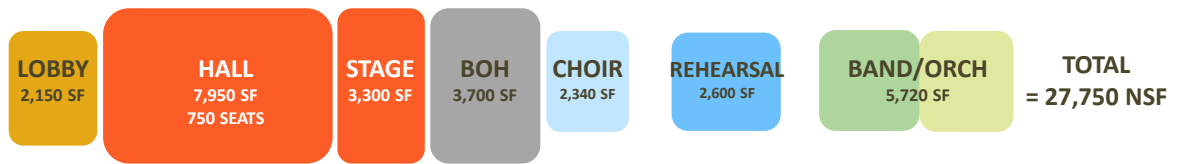
NO.	EXT.	ROOM	AREA
PHASE 2 - New Construction			Garage
100	100	Workshop, Storage & Light Unit - Automobile	500
101	101	Automotive - 700 sq. ft.	700
102	102	Control Room	500
103	103	Autobay Area	100
104	104	Autobay Storage - 1000 sq. ft. and garage in shed	1000
105	105	Office	100
106	106	Storage (Automotive, 1000 sq. ft.)	1000
107	107	Office in Control	100
108	108	Projection Booth/Control Room	100
109	109	Storage (Automotive)	400
110	110	Big Storage Room (1000 sq. ft.)	1000
111	111	Storage (Automotive)	100
112	112	Workshop, Storage & Light Unit - Stage	100
113	113	Storage of Automobiles	100
114	114	Storage of Automobiles	100
115	115	Storage of Automobiles	100
116	116	Storage of Automobiles	100
117	117	Storage of Automobiles	100
118	118	Storage of Automobiles	100
119	119	Storage of Automobiles	100
120	120	Storage of Automobiles	100
121	121	Storage of Automobiles	100
122	122	Storage of Automobiles	100
123	123	Storage of Automobiles	100
124	124	Storage of Automobiles	100
125	125	Storage of Automobiles	100
126	126	Storage of Automobiles	100
127	127	Storage of Automobiles	100
128	128	Storage of Automobiles	100
129	129	Storage of Automobiles	100
130	130	Storage of Automobiles	100
131	131	Storage of Automobiles	100
132	132	Storage of Automobiles	100
133	133	Storage of Automobiles	100
134	134	Storage of Automobiles	100
135	135	Storage of Automobiles	100
136	136	Storage of Automobiles	100
137	137	Storage of Automobiles	100
138	138	Storage of Automobiles	100
139	139	Storage of Automobiles	100
140	140	Storage of Automobiles	100
141	141	Storage of Automobiles	100
142	142	Storage of Automobiles	100
143	143	Storage of Automobiles	100
144	144	Storage of Automobiles	100
145	145	Storage of Automobiles	100
146	146	Storage of Automobiles	100
147	147	Storage of Automobiles	100
148	148	Storage of Automobiles	100
149	149	Storage of Automobiles	100
150	150	Storage of Automobiles	100
151	151	Storage of Automobiles	100
152	152	Storage of Automobiles	100
153	153	Storage of Automobiles	100
154	154	Storage of Automobiles	100
155	155	Storage of Automobiles	100
156	156	Storage of Automobiles	100
157	157	Storage of Automobiles	100
158	158	Storage of Automobiles	100
159	159	Storage of Automobiles	100
160	160	Storage of Automobiles	100
161	161	Storage of Automobiles	100
162	162	Storage of Automobiles	100
163	163	Storage of Automobiles	100
164	164	Storage of Automobiles	100
165	165	Storage of Automobiles	100
166	166	Storage of Automobiles	100
167	167	Storage of Automobiles	100
168	168	Storage of Automobiles	100
169	169	Storage of Automobiles	100
170	170	Storage of Automobiles	100
171	171	Storage of Automobiles	100
172	172	Storage of Automobiles	100
173	173	Storage of Automobiles	100
174	174	Storage of Automobiles	100
175	175	Storage of Automobiles	100
176	176	Storage of Automobiles	100
177	177	Storage of Automobiles	100
178	178	Storage of Automobiles	100
179	179	Storage of Automobiles	100
180	180	Storage of Automobiles	100
181	181	Storage of Automobiles	100
182	182	Storage of Automobiles	100
183	183	Storage of Automobiles	100
184	184	Storage of Automobiles	100
185	185	Storage of Automobiles	100
186	186	Storage of Automobiles	100
187	187	Storage of Automobiles	100
188	188	Storage of Automobiles	100
189	189	Storage of Automobiles	100
190	190	Storage of Automobiles	100
191	191	Storage of Automobiles	100
192	192	Storage of Automobiles	100
193	193	Storage of Automobiles	100
194	194	Storage of Automobiles	100
195	195	Storage of Automobiles	100
196	196	Storage of Automobiles	100
197	197	Storage of Automobiles	100
198	198	Storage of Automobiles	100
199	199	Storage of Automobiles	100
200	200	Storage of Automobiles	100
REASONABLE IF SUFFICIENT			

NO.	EST.	DESCRIPTION	1994 Amount
PHASE 1 Modernization of Music Building (Existing Building 1)			
100	100	Steel Casework/Refrigerator	1,000
101	101	Steel Partition - room 20	1,100
102	102	Steel Bank Storage	1,200
103	103	Steel - Lockers/Storage Office	1,300
104	104	Steel - Lockers/Storage Washroom - Sound Lock	1,400
105	105	Steel - Lockers/Storage Washroom/Storage	1,500
106	106	Steel - Lockers/Storage Washroom - Music Admin. Storage	1,600
107	107	Lockers/Storage Washroom/Refrigerator	1,700
108	108	Lockers/Storage room 20	1,800
109	109	Lockers/Storage (100 - 109)	1,900
ASSIGNABLE TO SUBTOTAL			16,200
PHASE 2 New Construction (Alternate - pending funding)			
200	200	Lockers/Storage Washroom/Refrigerator 20 (Office)	2,000
201	201	Lockers/Storage Washroom/Refrigerator 20 (Office)	2,100
202	202	Lockers/Storage Washroom/Refrigerator 20 (Office)	2,200
203	203	Lockers/Storage Washroom/Refrigerator 20 (Office)	2,300
204	204	Lockers/Storage Washroom/Refrigerator 20 (Office)	2,400
205	205	Lockers/Storage Washroom/Refrigerator 20 (Office)	2,500
206	206	Lockers/Storage Washroom/Refrigerator 20 (Office)	2,600
207	207	Lockers/Storage Washroom/Refrigerator 20 (Office)	2,700
208	208	Lockers/Storage Washroom/Refrigerator 20 (Office)	2,800
209	209	Lockers/Storage Washroom/Refrigerator 20 (Office)	2,900
210	210	Lockers/Storage Washroom/Refrigerator 20 (Office)	3,000
211	211	Lockers/Storage Washroom/Refrigerator 20 (Office)	3,100
212	212	Lockers/Storage Washroom/Refrigerator 20 (Office)	3,200
213	213	Lockers/Storage Washroom/Refrigerator 20 (Office)	3,300
214	214	Lockers/Storage Washroom/Refrigerator 20 (Office)	3,400
215	215	Lockers/Storage Washroom/Refrigerator 20 (Office)	3,500
216	216	Lockers/Storage Washroom/Refrigerator 20 (Office)	3,600
217	217	Lockers/Storage Washroom/Refrigerator 20 (Office)	3,700
218	218	Lockers/Storage Washroom/Refrigerator 20 (Office)	3,800
219	219	Lockers/Storage Washroom/Refrigerator 20 (Office)	3,900
220	220	Lockers/Storage Washroom/Refrigerator 20 (Office)	4,000
221	221	Lockers/Storage Washroom/Refrigerator 20 (Office)	4,100
222	222	Lockers/Storage Washroom/Refrigerator 20 (Office)	4,200
223	223	Lockers/Storage Washroom/Refrigerator 20 (Office)	4,300
224	224	Lockers/Storage Washroom/Refrigerator 20 (Office)	4,400
225	225	Lockers/Storage Washroom/Refrigerator 20 (Office)	4,500
226	226	Lockers/Storage Washroom/Refrigerator 20 (Office)	4,600
227	227	Lockers/Storage Washroom/Refrigerator 20 (Office)	4,700
228	228	Lockers/Storage Washroom/Refrigerator 20 (Office)	4,800
229	229	Lockers/Storage Washroom/Refrigerator 20 (Office)	4,900
230	230	Lockers/Storage Washroom/Refrigerator 20 (Office)	5,000
231	231	Lockers/Storage Washroom/Refrigerator 20 (Office)	5,100
232	232	Lockers/Storage Washroom/Refrigerator 20 (Office)	5,200
233	233	Lockers/Storage Washroom/Refrigerator 20 (Office)	5,300
234	234	Lockers/Storage Washroom/Refrigerator 20 (Office)	5,400
235	235	Lockers/Storage Washroom/Refrigerator 20 (Office)	5,500
236	236	Lockers/Storage Washroom/Refrigerator 20 (Office)	5,600
237	237	Lockers/Storage Washroom/Refrigerator 20 (Office)	5,700
238	238	Lockers/Storage Washroom/Refrigerator 20 (Office)	5,800
239	239	Lockers/Storage Washroom/Refrigerator 20 (Office)	5,900
240	240	Lockers/Storage Washroom/Refrigerator 20 (Office)	6,000
241	241	Lockers/Storage Washroom/Refrigerator 20 (Office)	6,100
242	242	Lockers/Storage Washroom/Refrigerator 20 (Office)	6,200
243	243	Lockers/Storage Washroom/Refrigerator 20 (Office)	6,300
244	244	Lockers/Storage Washroom/Refrigerator 20 (Office)	6,400
245	245	Lockers/Storage Washroom/Refrigerator 20 (Office)	6,500
246	246	Lockers/Storage Washroom/Refrigerator 20 (Office)	6,600
247	247	Lockers/Storage Washroom/Refrigerator 20 (Office)	6,700
248	248	Lockers/Storage Washroom/Refrigerator 20 (Office)	6,800
249	249	Lockers/Storage Washroom/Refrigerator 20 (Office)	6,900
250	250	Lockers/Storage Washroom/Refrigerator 20 (Office)	7,000
251	251	Lockers/Storage Washroom/Refrigerator 20 (Office)	7,100
252	252	Lockers/Storage Washroom/Refrigerator 20 (Office)	7,200
253	253	Lockers/Storage Washroom/Refrigerator 20 (Office)	7,300
254	254	Lockers/Storage Washroom/Refrigerator 20 (Office)	7,400
255	255	Lockers/Storage Washroom/Refrigerator 20 (Office)	7,500
256	256	Lockers/Storage Washroom/Refrigerator 20 (Office)	7,600
257	257	Lockers/Storage Washroom/Refrigerator 20 (Office)	7,700
258	258	Lockers/Storage Washroom/Refrigerator 20 (Office)	7,800
259	259	Lockers/Storage Washroom/Refrigerator 20 (Office)	7,900
260	260	Lockers/Storage Washroom/Refrigerator 20 (Office)	8,000
261	261	Lockers/Storage Washroom/Refrigerator 20 (Office)	8,100
262	262	Lockers/Storage Washroom/Refrigerator 20 (Office)	8,200
263	263	Lockers/Storage Washroom/Refrigerator 20 (Office)	8,300
264	264	Lockers/Storage Washroom/Refrigerator 20 (Office)	8,400
265	265	Lockers/Storage Washroom/Refrigerator 20 (Office)	8,500
266	266	Lockers/Storage Washroom/Refrigerator 20 (Office)	8,600
267	267	Lockers/Storage Washroom/Refrigerator 20 (Office)	8,700
268	268	Lockers/Storage Washroom/Refrigerator 20 (Office)	8,800
269	269	Lockers/Storage Washroom/Refrigerator 20 (Office)	8,900
270	270	Lockers/Storage Washroom/Refrigerator 20 (Office)	9,000
271	271	Lockers/Storage Washroom/Refrigerator 20 (Office)	9,100
272	272	Lockers/Storage Washroom/Refrigerator 20 (Office)	9,200
273	273	Lockers/Storage Washroom/Refrigerator 20 (Office)	9,300
274	274	Lockers/Storage Washroom/Refrigerator 20 (Office)	9,400
275	275	Lockers/Storage Washroom/Refrigerator 20 (Office)	9,500
276	276	Lockers/Storage Washroom/Refrigerator 20 (Office)	9,600
277	277	Lockers/Storage Washroom/Refrigerator 20 (Office)	9,700
278	278	Lockers/Storage Washroom/Refrigerator 20 (Office)	9,800
279	279	Lockers/Storage Washroom/Refrigerator 20 (Office)	9,900
280	280	Lockers/Storage Washroom/Refrigerator 20 (Office)	10,000
281	281	Lockers/Storage Washroom/Refrigerator 20 (Office)	10,100
282	282	Lockers/Storage Washroom/Refrigerator 20 (Office)	10,200
283	283	Lockers/Storage Washroom/Refrigerator 20 (Office)	10,300
284	284	Lockers/Storage Washroom/Refrigerator 20 (Office)	10,400
285	285	Lockers/Storage Washroom/Refrigerator 20 (Office)	10,500
286	286	Lockers/Storage Washroom/Refrigerator 20 (Office)	10,600
287	287	Lockers/Storage Washroom/Refrigerator 20 (Office)	10,700
288	288	Lockers/Storage Washroom/Refrigerator 20 (Office)	10,800
289	289	Lockers/Storage Washroom/Refrigerator 20 (Office)	10,900
290	290	Lockers/Storage Washroom/Refrigerator 20 (Office)	11,000
291	291	Lockers/Storage Washroom/Refrigerator 20 (Office)	11,100
292	292	Lockers/Storage Washroom/Refrigerator 20 (Office)	11,200
293	293	Lockers/Storage Washroom/Refrigerator 20 (Office)	11,300
294	294	Lockers/Storage Washroom/Refrigerator 20 (Office)	11,400
295	295	Lockers/Storage Washroom/Refrigerator 20 (Office)	11,500
296	296	Lockers/Storage Washroom/Refrigerator 20 (Office)	11,600
297	297	Lockers/Storage Washroom/Refrigerator 20 (Office)	11,700
298	298	Lockers/Storage Washroom/Refrigerator 20 (Office)	11,800
299	299	Lockers/Storage Washroom/Refrigerator 20 (Office)	11,900
300	300	Lockers/Storage Washroom/Refrigerator 20 (Office)	12,000
OUTDOOR SPACE			
Outdoor Music Laureate			100.00
Total amount			100.00

EXISTING SPACES ORIGINAL USE



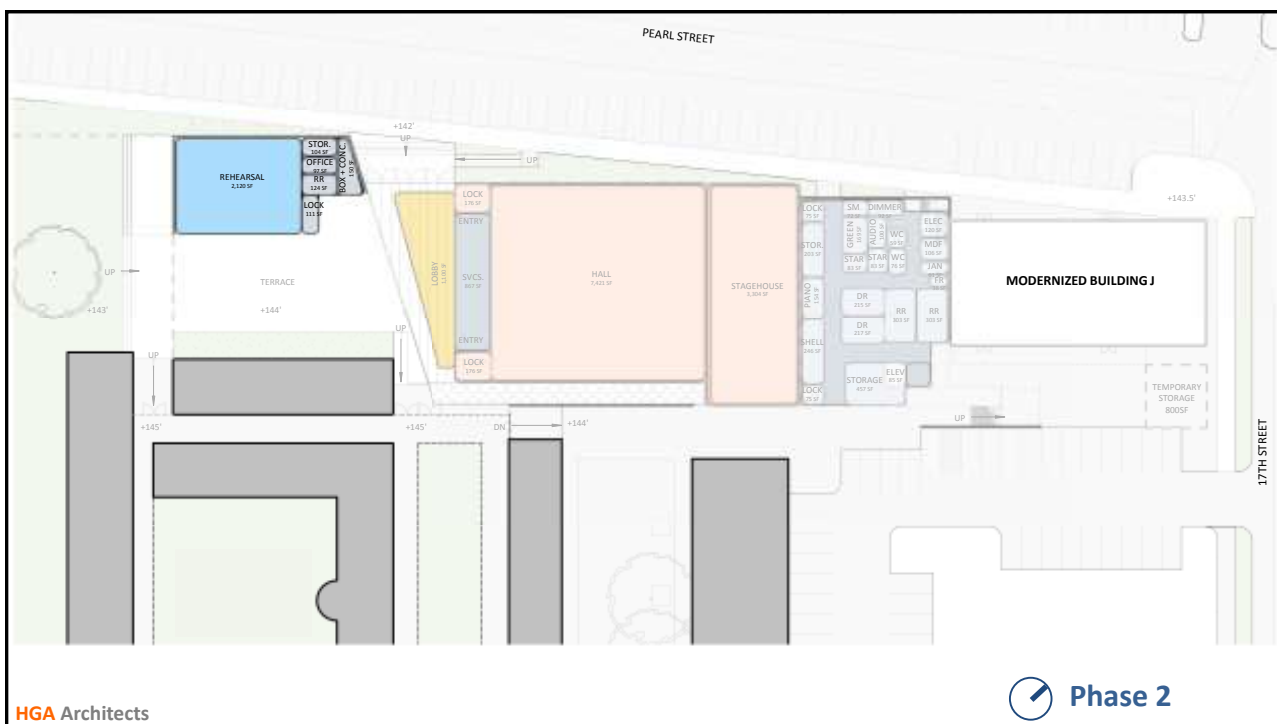
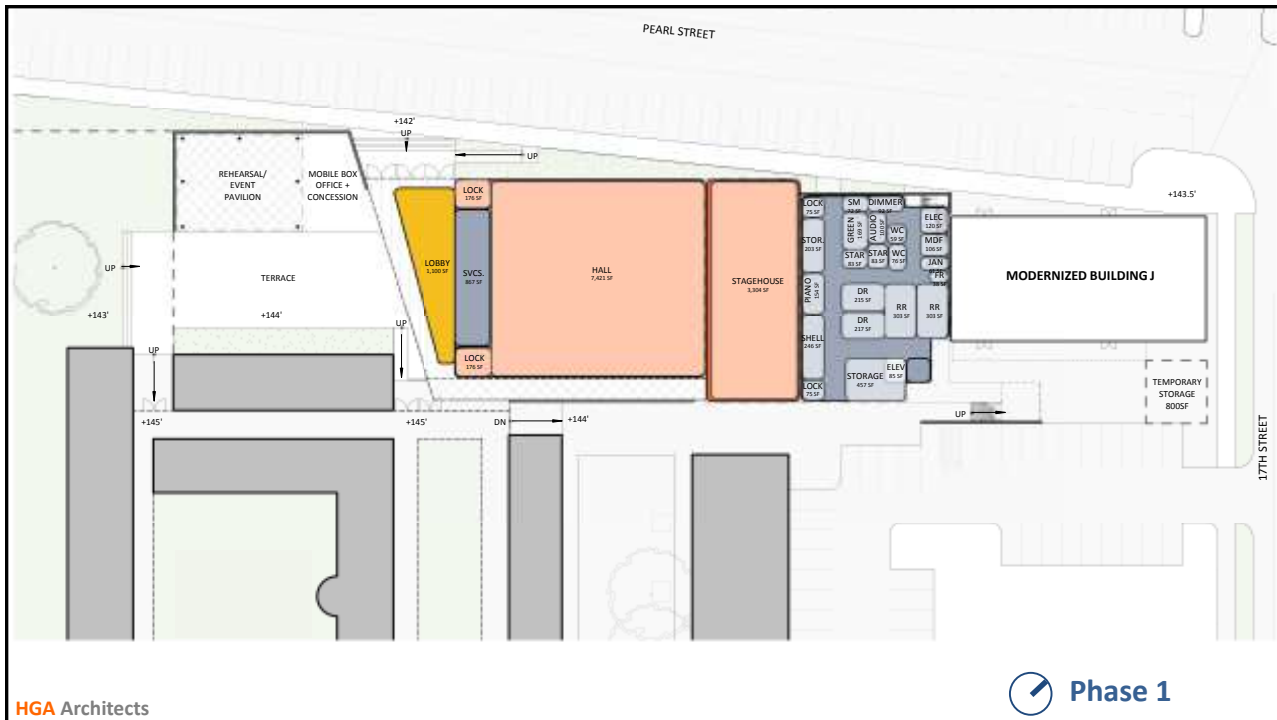
PROPOSED SPACES



HGA Architects

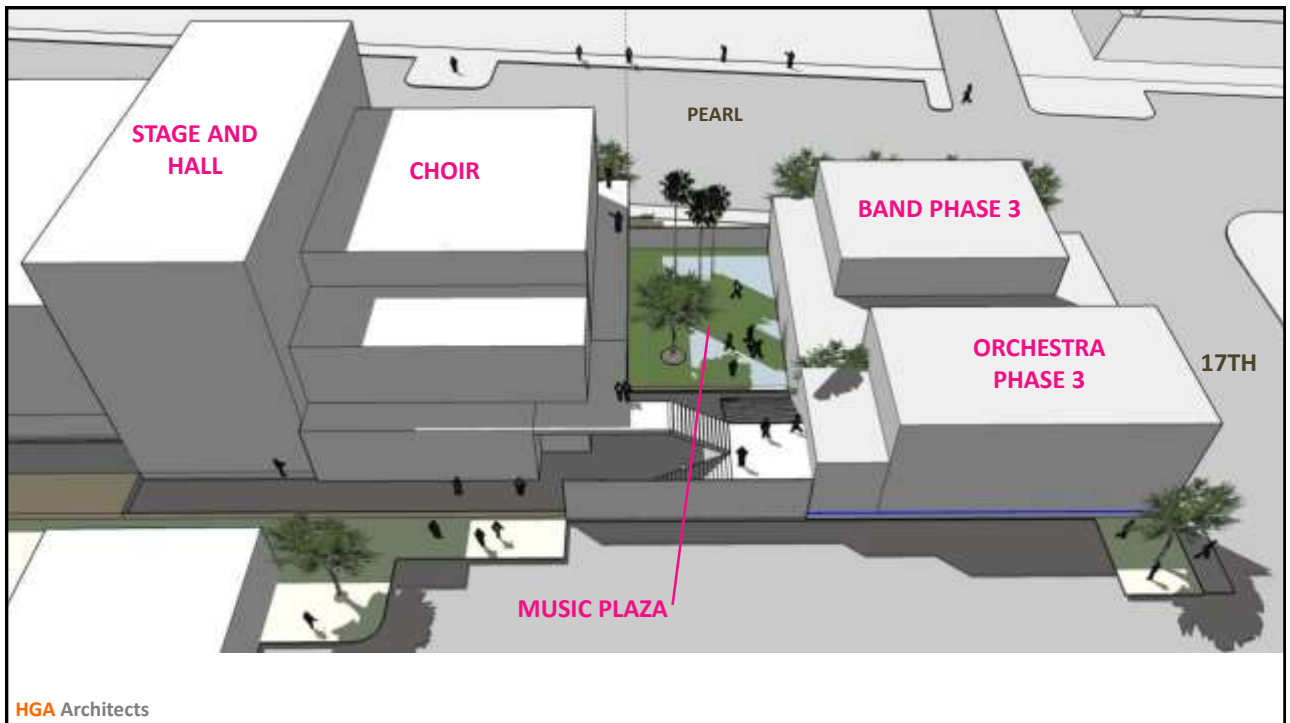
PROPOSED PROJECT AND PHASING

HGA Architects









THANK YOU!

HGA Architects

