



California Assessment of Student Performance and Progress

Governing Board Meeting
October 17, 2017

Presented by: Lindi Dreibelbis, Chief Director

Testing Acronyms Abound

CAASPP	California Assessment of Student Performance and Progress
SBAC ELA	Smarter Balanced Assessment Consortium English Language Arts Literacy Summative Assessment
SBAC Math	Smarter Balanced Assessment Consortium Mathematics Summative Assessment
CAST	California Science Test
CAA	California Alternative Assessment in English, Math and Science (called “Cal Alt”)



ENGLISH LANGUAGE ARTS

<div> <div>First</div> <div>Second</div> <div>Third</div> </div>	3rd Grade	4th Grade	5th Grade	6th Grade	7th Grade	8th Grade	11th Grade	ALL Met & Exceeded	% Exceeded	% of Enrolled w/ Scores
State of CA	2415	2455.9	2489.5	2518.9	2542.4	2558.7	2602.5	48.56%	20.72%	96.99%
La Cañada	2502.8	2556.2	2584.4	2630.8	2627.2	2659	2695.1	85.86%	57.43 %	97.96%
Arcadia	2484.4	2527.9	2577.7	2601.9	2621.3	2639.4	2651.6	79.44%	47.64%	96.59%
Beverly Hills	2469.1	2515	2554.4	2573.7	2604	2619.4	2681.9	75.28%	40.98 %	97.63%
Carmel (Monterey)	2492.4	2516.9	2567.9	2603.7	2641.8	2637.9	2691.2	81.24%	50.82 %	97.88%
Irvine (Orange)	2473	2525.1	2564.4	2595.3	2622	2637.4	2671.5	77.46%	46.61 %	96.89%
Manhattan Beach	2502.7	2549.3	2589.2	2596.5	2628.9	2631.2	2673.2	84.08%	51.10%	96.96%
Oak Park (Ventura)	2493.9	2527.8	2573.8	2581.8	2615.2	2623.1	2684	79.39%	45.53 %	96.03%
Palo Alto (Santa Clara)	2480.7	2533.3	2580.9	2613.5	2637.8	2647.5	2686.9	81.85%	52.25 %	83.98%
Palos Verdes Peninsula	2498	2534.4	2576.6	2575.4	2609.4	2621.5	2660.4	78.32%	44.03%	92.70%
Piedmont City (Alameda)	2499.2	2544.7	2594.2	2605.9	2638.1	2639.9	2696	86.02%	53.67 %	97.58%
Pleasanton (Alameda)	2491.2	2526.9	2566.3	2600.2	2627.8	2638.6	2695.9	80.83%	49.68 %	98.04%
San Marino	2541	2582.2	2618	2624.9	2644.2	2661.5	2691.5	90.05%	64.59%	95.91%
San Ramon Valley (Contra Costa)	2484.1	2529	2567.1	2600.9	2628.8	2637.9	2689.8	81.67%	48.03 %	98.22%
South Pasadena	2491	2543.2	2593.8	2620.7	2636.1	2641.4	2668.8	83.34%	54.76 %	96.91%
Walnut Valley	2476.4	2523.1	2547.1	2583.8	2615.1	2627.4	2662.6	75.64%	43.13 %	97.35%



Scores Remain Stagnant in Third Year

Tom Torlakson, State Superintendent of Public Instruction, September 27, 2017

“I’m pleased we retained our gains, but we have much more work to do.... It’s important to remember that these tests are far more rigorous and realistic than the previous paper and pencil tests. We are asking more of our students, but for a good reason—so they are better prepared for the world of college and careers.”

Matt Levin, Calmatters, October 5, 2017

“The other 12 states that have published scores and administered the same standardized test with the same questions...all saw their scores dip or remain stagnant.... No state among the 12, despite different education policies at the state and local level, saw progress in the English portion of the test.”

MATHEMATICS

<div> <div>First</div> <div>Second</div> <div>Third</div> </div>	3rd Grade	4th Grade	5th Grade	6th Grade	7th Grade	8th Grade	11th Grade	ALL Met & Exceeded	% Exceeded	% of Enrolled w/ Scores
State of CA	2427.9	2462.9	2485.8	2508.5	2524.9	2540.2	2565	37.56%	17.60%	97.34%
La Cañada	2512.7	2563.9	2592.7	2634.3	2646.6	2673.4	2724	83.53%	60.73 %	98.13%
Arcadia	2506.8	2535.2	2575.6	2612.8	2637	2680.7	2669.5	75.69%	53.79 %	99.26%
Beverly Hills	2488.5	2520.5	2540.6	2576	2594.9	2616.2	2653.9	65.37%	36.85 %	98.13%
Carmel (Monterey)	2481.3	2511.1	2548.2	2592.6	2623.4	2634.5	2651	68.80%	40.22 %	98.02%
Irvine (Orange)	2488.1	2532.5	2566.2	2606.7	2634.4	2668.1	2685	74.28%	50.54 %	98.71%
Manhattan Beach	2493.6	2546.6	2573.8	2585.4	2617.3	2620	2660.3	74.78%	43.40%	96.88%
Oak Park (Ventura)	2500.1	2540.9	2565.8	2575.3	2628.6	2621	2660.7	71.78%	42.77%	96.18%
Palo Alto (Santa Clara)	2500.8	2548.4	2586.8	2635.5	2655.4	2686.5	2712.8	81.45%	61.73 %	85.12%
Palos Verdes Peninsula	2498.4	2531.8	2566.3	2596	2624.8	2645.3	2676.6	72.41%	46.75 %	93.24%
Piedmont City (Alameda)	2522.8	2564.9	2597.5	2616.9	2664.4	2669.9	2679.3	83.63%	61.39 %	97.38%
Pleasanton (Alameda)	2501	2536.2	2575.9	2613	2634.5	2657.7	2692.3	76.91%	52.15 %	98.33%
San Marino	2534.9	2574	2605.7	2623.7	2651.3	2674.2	2724.4	85.81%	64.51 %	98.22%
San Ramon Valley (Contra Costa)	2500.4	2541.6	2575.5	2609.9	2630.1	2658.8	2683.4	77.08%	50.32 %	98.31%
South Pasadena	2495.9	2546.5	2596.9	2632.3	2637.2	2679.1	2682	78.66%	55.85 %	97.82%
Walnut Valley	2488.1	2538.6	2564	2604	2628.5	2651.1	2682.5	73.66%	48.63 %	98.74%

Looking at Test Results

Oh, let me count the ways!

Scale Scores and Performance Levels

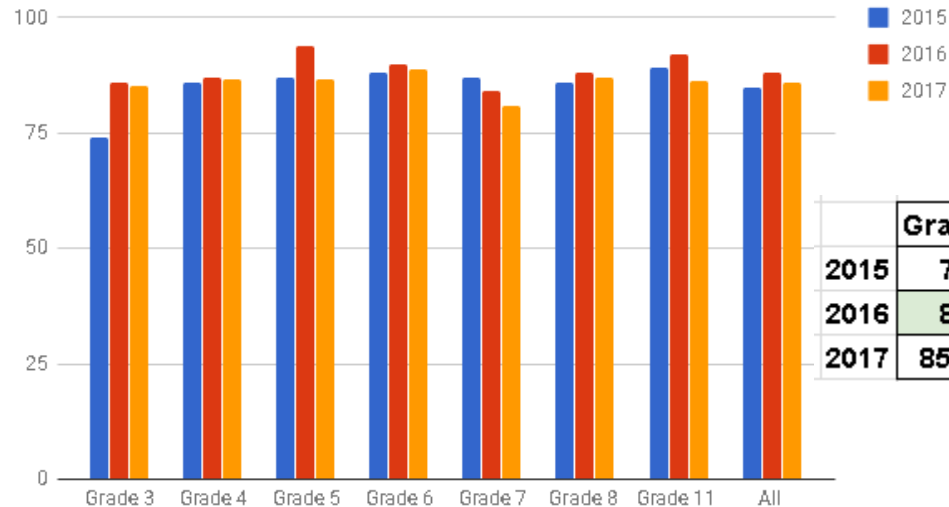
STATE
TARGETS

EXAMPLE: English Language Arts/Literacy

<u>Grade</u>	<u>Not Met</u>	<u>Nearly Met</u>	<u>Met</u>	<u>Exceeded</u>
5	2201–2441	2442–2501	2502–2581	2582–2701
6	2210–2456	2457–2530	2531–2617	2618–2724
7	2258–2478	2479–2551	2552–2648	2649–2745

Percentage of Students Meeting State Target: Met + Exceeded English Language Arts/Literacy

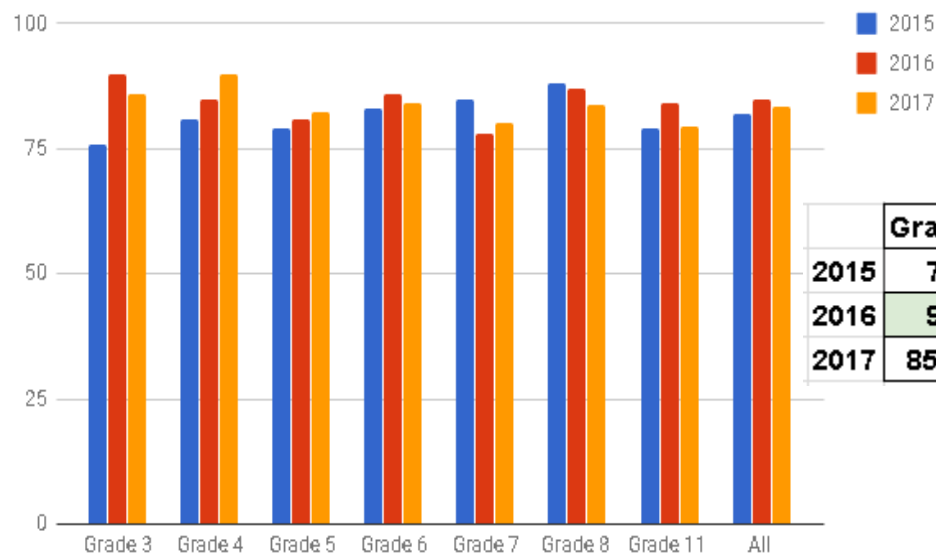
2015, 2016 and 2017



	Grade 3	Grade 4	Grade 5	Grade 6	Grade 7	Grade 8	Grade 11	All
2015	74	86	87	88	87	86	89	85
2016	86	87	94	90	84	88	92	88
2017	85.18	86.49	86.73	88.63	80.81	87.03	86.42	85.86

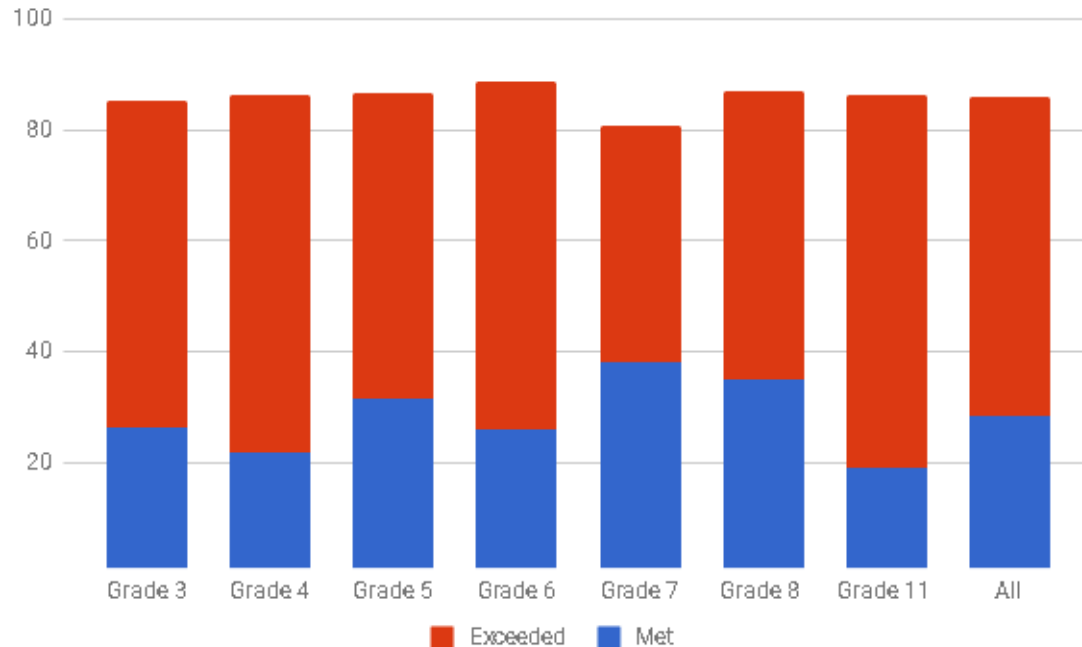
Percentage of Students Meeting State Target: Met + Exceeded Mathematics

2015, 2016 and 2017

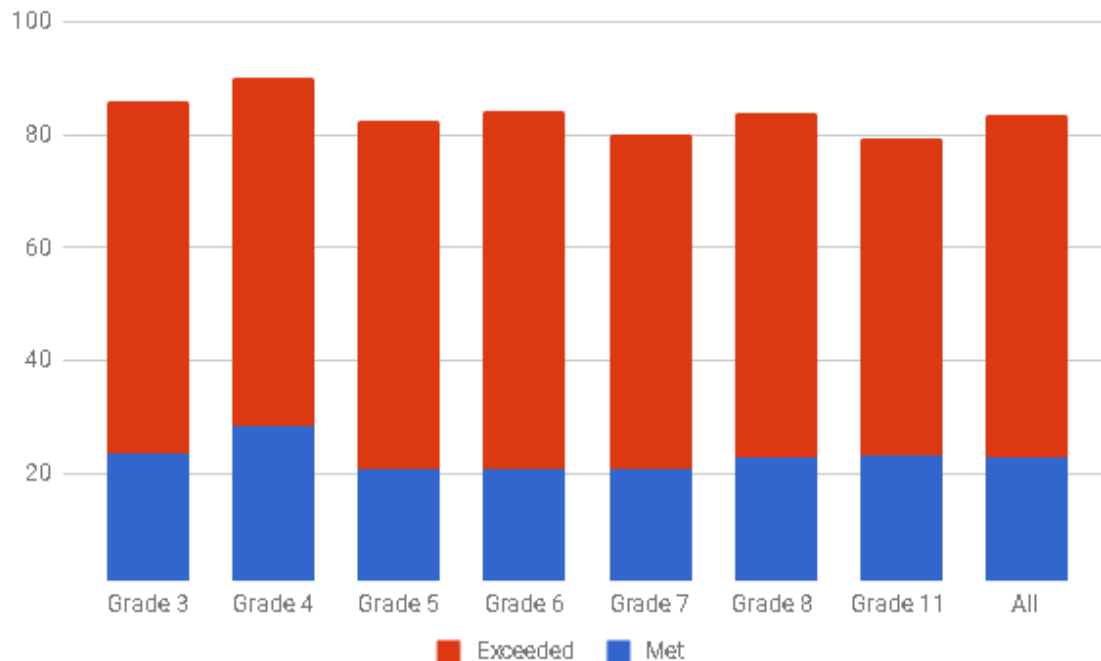


	Grade 3	Grade 4	Grade 5	Grade 6	Grade 7	Grade 8	Grade 11	All
2015	76	81	79	83	85	88	79	82
2016	90	85	81	86	78	87	84	85
2017	85.96	89.97	82.35	84.09	80.23	83.91	79.42	83.53

2017 Percentage Met and Exceeded in English



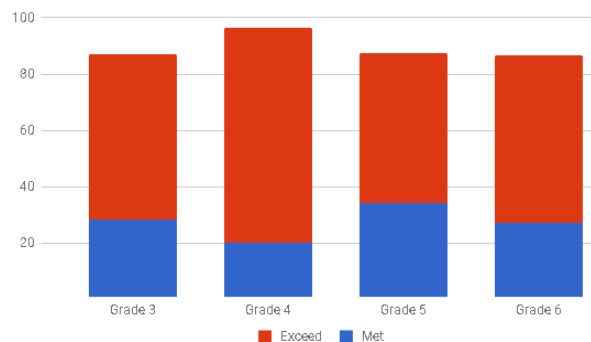
2017 Percentage Met and Exceeded in Math



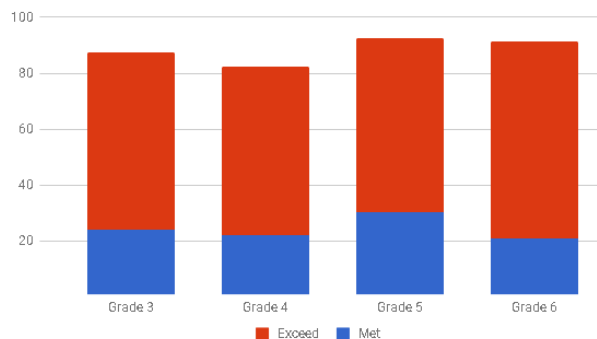


2017 Elementary School Performance in English Percentage Met and Exceeded

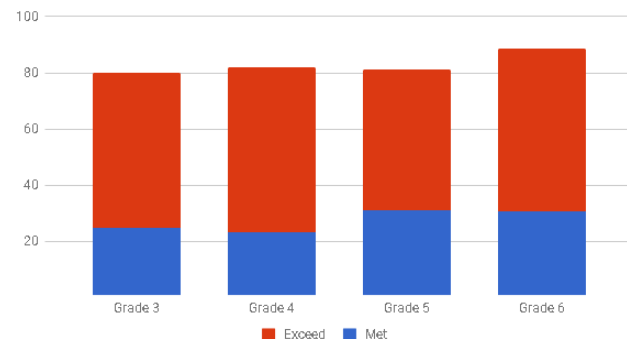
La Canada Elementary



Palm Crest



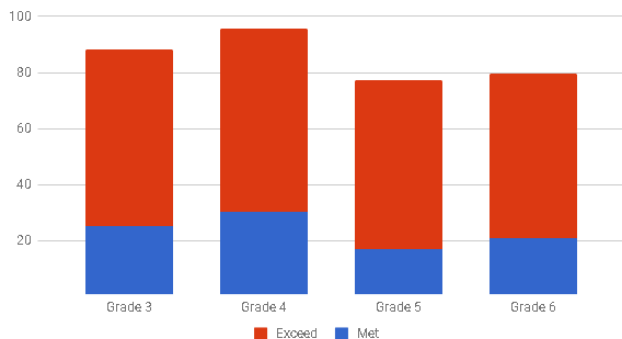
Paradise Canyon



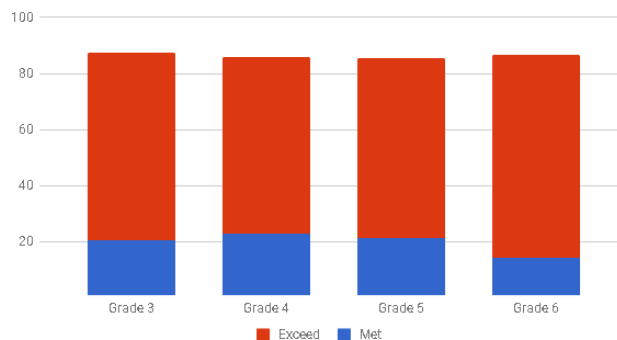


2017 Elementary School Performance in Math Percentage Met and Exceeded

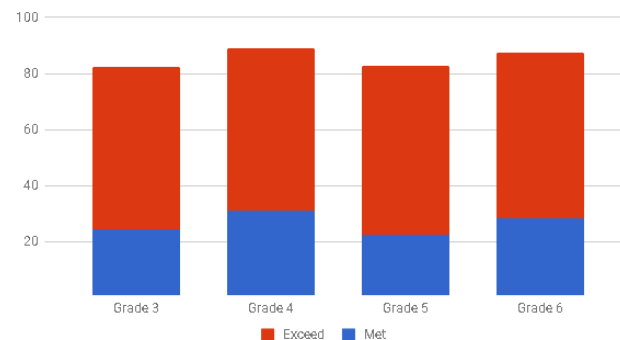
La Canada Elementary



Palm Crest



Paradise Canyon



Area Claim Descriptors: Three Performance Levels

English Language Arts/Literacy

Reading

Writing

Listening

Research/Inquiry

Mathematics

Concepts & Procedures

Problem Solving and Modeling &
Data Analysis

Communicating Reasoning

Distance from Met (or Level 3)

	3rd Grade	4th Grade	5th Grade	6th Grade	7th Grade	8th Grade	11th Grade
La Cañada	2502.8	2556.2	2584.4	2630.8	2627.2	2659	2695.1

Grade	Not Met	Nearly Met	Met	Exceeded
6	2210–2456	2457–2530	2531–2617	2618–2724

$$\begin{array}{r}
 2630.8 \\
 - 2531 \\
 \hline
 99.8
 \end{array}$$

LC 6th grade students mean scale score is 99.8 points above the the lowest scale score of the met range

Distance from met for 6th grade ELA is 99.8!

Looking at Test Results

Oh, let me count the ways!

Scale Scores and Performance Levels

STATE
TARGETS

EXAMPLE: English Language Arts/Literacy

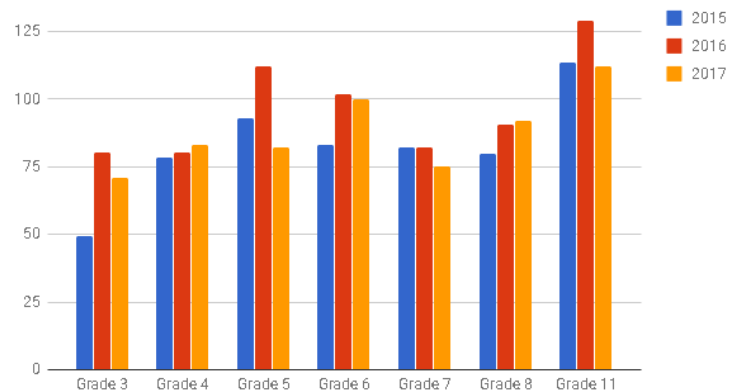
<u>Grade</u>	<u>Not Met</u>	<u>Nearly Met</u>	<u>Met</u>	<u>Exceeded</u>
5	2201–2441	2442–2501	2502–2581	2582–2701
6	2210–2456	2457–2530	2531–2617	2618–2724
7	2258–2478	2479–2551	2552–2648	2649–2745

Distance from Met

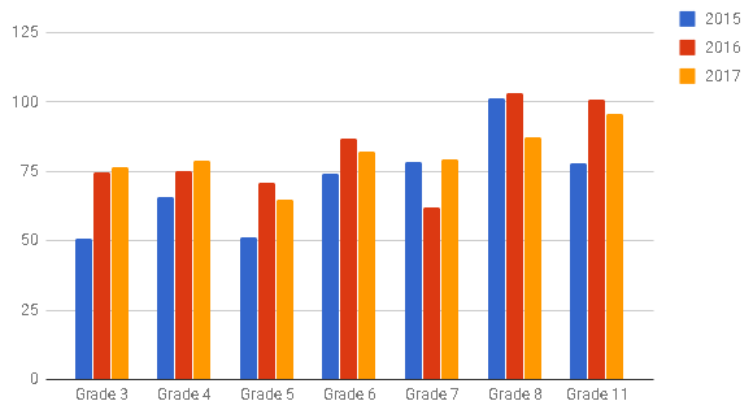
	Grade 3	Grade 4	Grade 5	Grade 6	Grade 7	Grade 8	Grade 11
ENGLISH LANGUAGE ARTS							
2015	49.2	78.5	93	83.3	82.4	79.7	113.6
2016	80.4	80.5	112.2	102	82.4	90.5	128.9
2017	70.8	83.2	82.4	99.8	75.2	92	112.1
MATHEMATICS							
2015	51	65.6	51.3	74.1	78.6	101.6	78.2
2016	74.6	75	71	87.1	62.2	103.4	101.1
2017	76.7	78.9	64.7	82.3	79.6	87.4	96

Growth in ELA and math last two years!

English



Math



State Indicators in the Fall 2017 Dashboard

Chronic Absenteeism

Suspension Rate

English Learner Progress

Graduation Rate

College/Career

**Academic: English Language Arts and
Mathematics**



- Digital Library
- Interim Assessments
- Practice & Training Tests
- Summative Assessment

Questions?

CAASPP results for all CA schools & districts are found at:
<https://caaspp.cde.ca.gov/sb2017/default>