



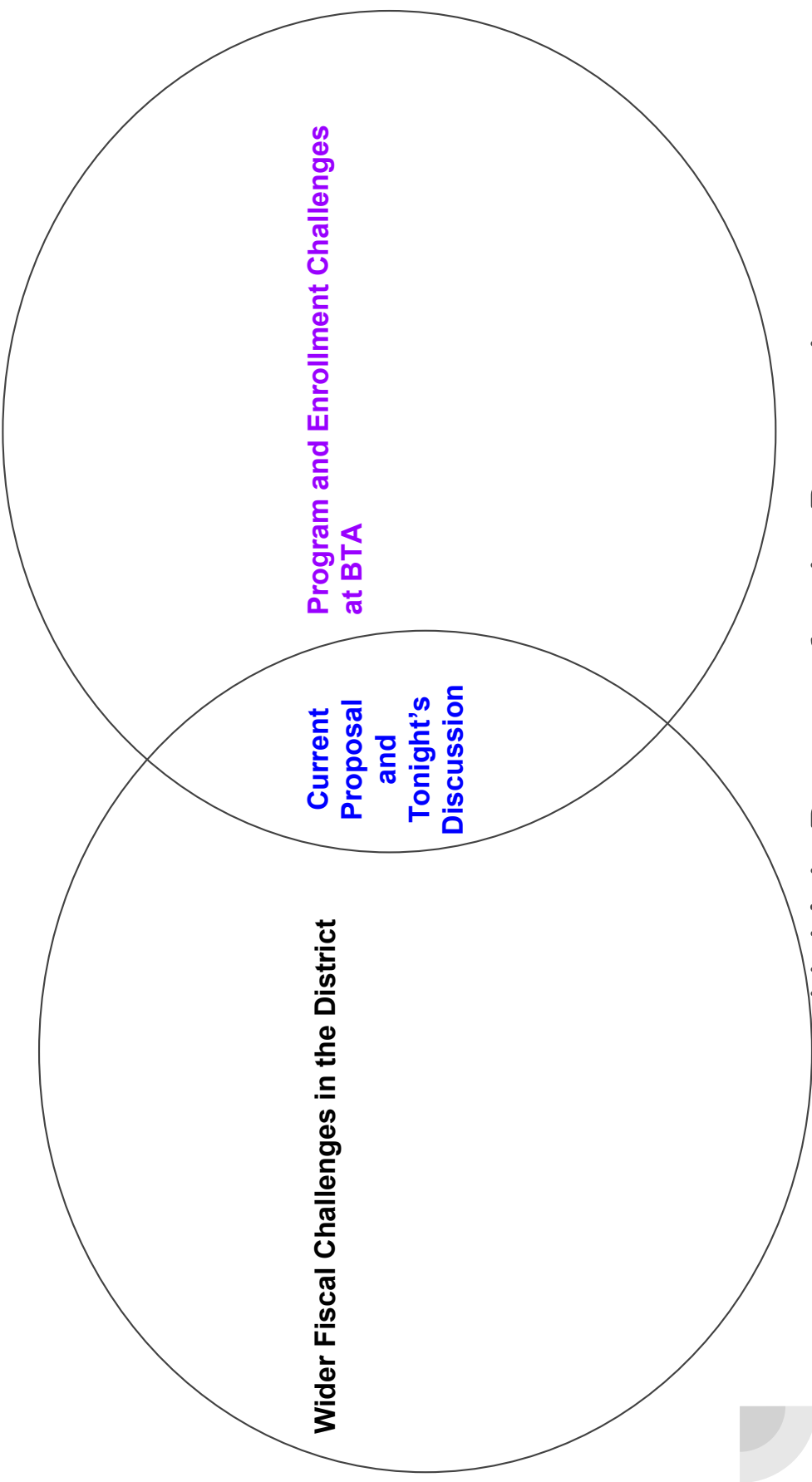
# **BUSD Alternative High School Programs**

**Proposed Program and Restructuring Concepts**

January 10, 2018

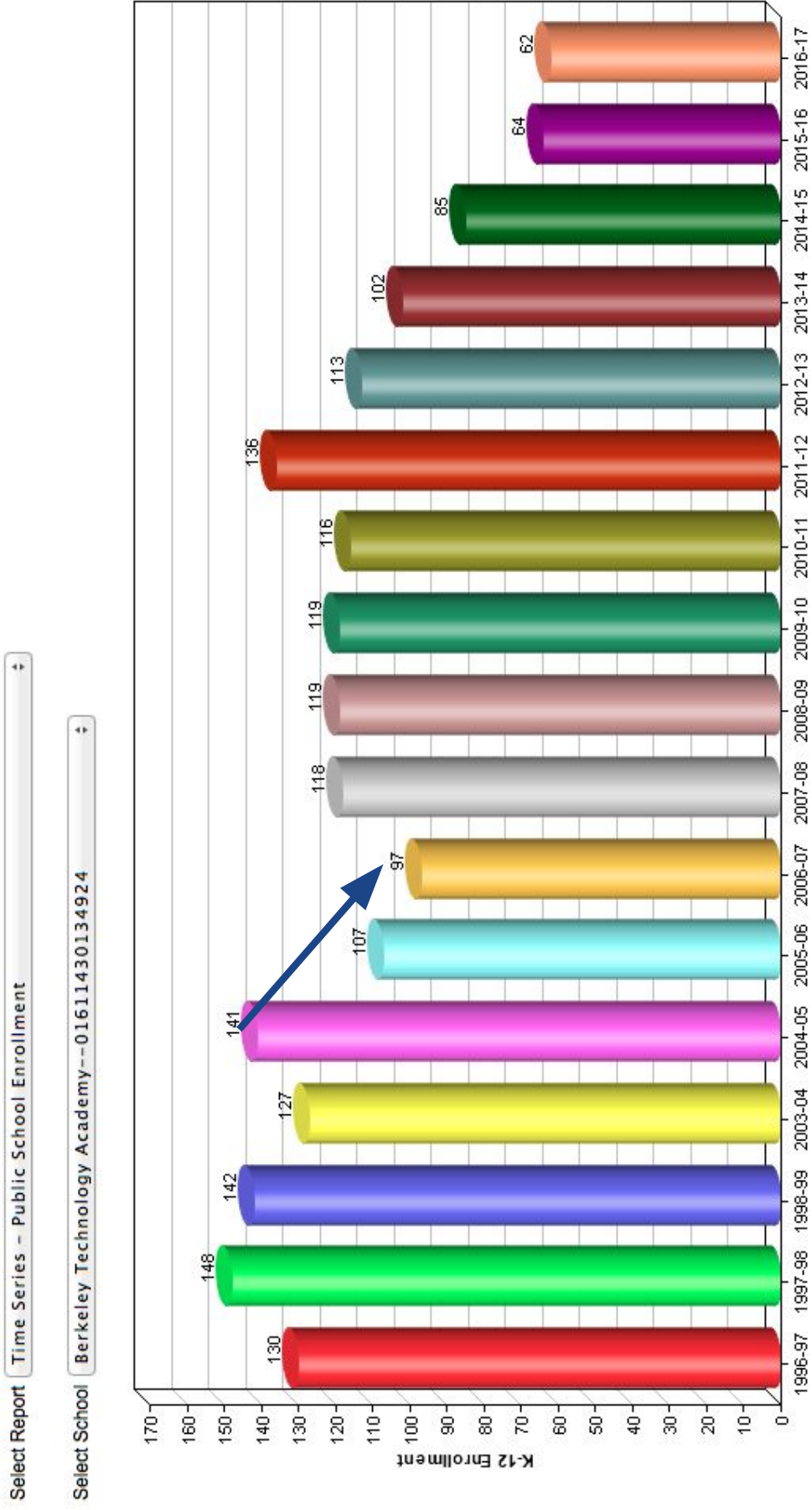
# Chronology of Discussion and Proposal

Spring 2017	BTA staffing reduced from 10.0 FTE to 8.0 FTE
May 2017	Concept of a single administrator proposed for 18-19
July 2017	Educational Services continues to discuss staffing and enrollment at BTA
November 2017	Proposed restructuring of BTA + blended management position to oversee BTA/BIS
December 2017	<ol style="list-style-type: none"><li>1. Refine aspects of the BTA restructuring per Board direction</li><li>2. Look at the proposal in individual components</li></ol>
TONIGHT	Board decision on proposal
Beyond	If single administrator concept is not approved, return to SBAC with impact on other proposed reductions



## Multiple Reasons for the Proposal

## BTA Enrollment



# Components of the Proposal

A	BTA becomes a Continuation High School Staff at proportionate levels for 18:1 class size.	Allows for redirection of currently underutilized resources.  Creates 2.0 savings in BSEP and 1.0 savings to GF to offset the cost of a counselor for BTA/BIS.
B	Reduce <b>safety officer staffing</b> at BTA/BIS from 2.0 to 1.0	Can impact other proposed reductions in safety staffing.
C	<b>Maintain clerical positions at both sites</b> for the 18-19 school year and reevaluate winter 2018.	Eases and supports transition to single administrator. Creates opportunities to reorganize that support improved service and efficiency.
D	Utilize <b>one administrator for both programs</b> .	Supported by two clerical staff and a counselor.
E	<b>Keep current BTA counselor</b> and expand to serve BIS students as well.	Cost offset by teacher reduction at BTA; also potentially reduces BHS counselor cut to 1.0 from 1.5



# Dimensions of a Communication School

- continuation/HS diploma
- students who are sixteen years of age or older \*\*
- must spend at least 15 hours per week or three hours per day at school
- some programs offer independent study, job-placement services, and concurrent enrollment in community college
- graduation requirements start from state minimum of 130

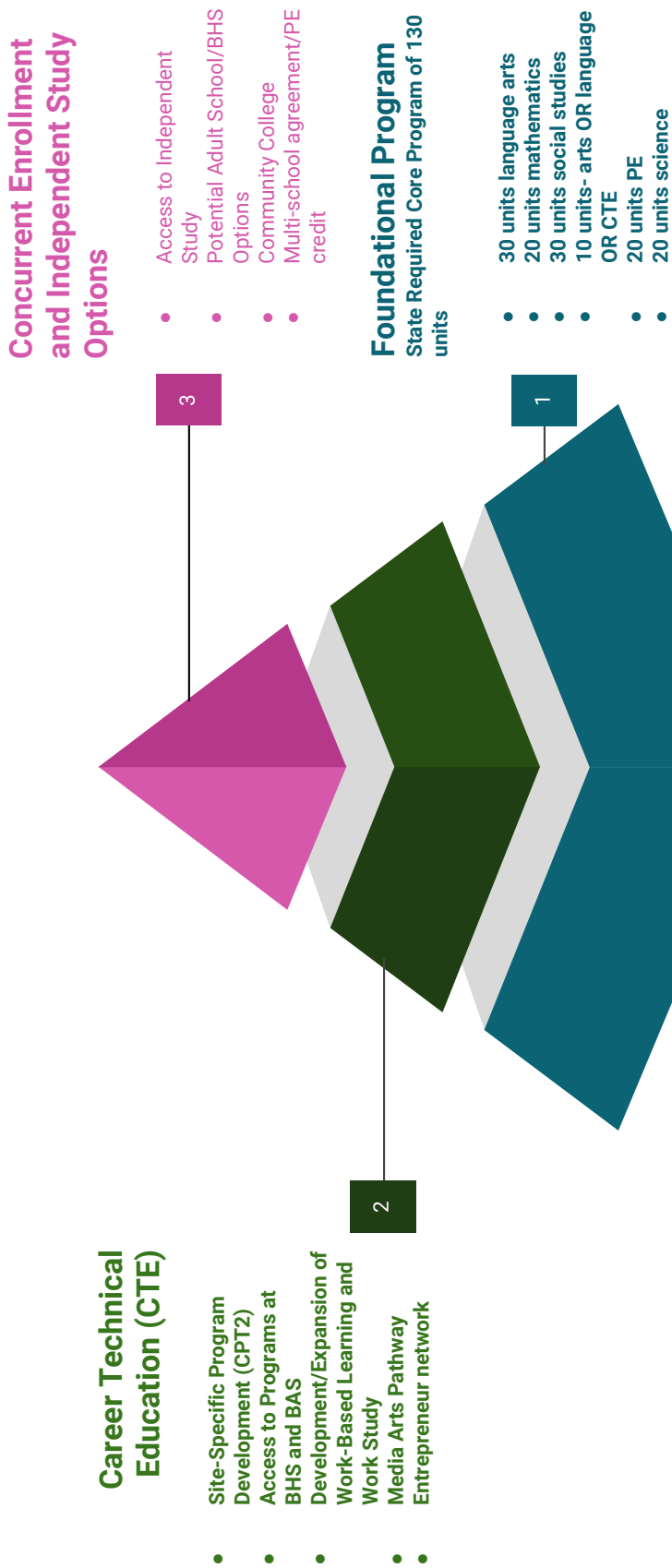
# Berkeley Technology Academy (BTA)

Core Academic / Continuation High School Diploma Program

Select A-G Options

1. Expanded CTE
2. Concurrent Enrollment (BHS or BCC)
3. Independent Study

# Berkeley Technology Academy (BTA) - Continuation School with Differentiated Program Options





# Maintain and Expand Opportunities at BTA

## Career and Technical Education (CTE)

- California Pathways Trust 2 (CPT2) \$275,000
- Media Arts - Engineering, Sound, Production, and Marketing
- Network for Teaching Entrepreneurs (NFTE)
- Work-Based learning and expanded work study programs

# Maintain and Expand Opportunities at BTA

## Concurrent Enrollment

- Access to Community College (prerequisites to consider)
- Potential agreements for facilities use for BTA to **host** classes
- CTE Program Supervisor working to expand outside the school day opportunities for all students at BHS, BTA, BAS

# **Maintain and Expand Opportunities at BTA**

## **Independent Study for BTA Kids**

- BTA students can access a contract for BIS -could be concurrently enrolled

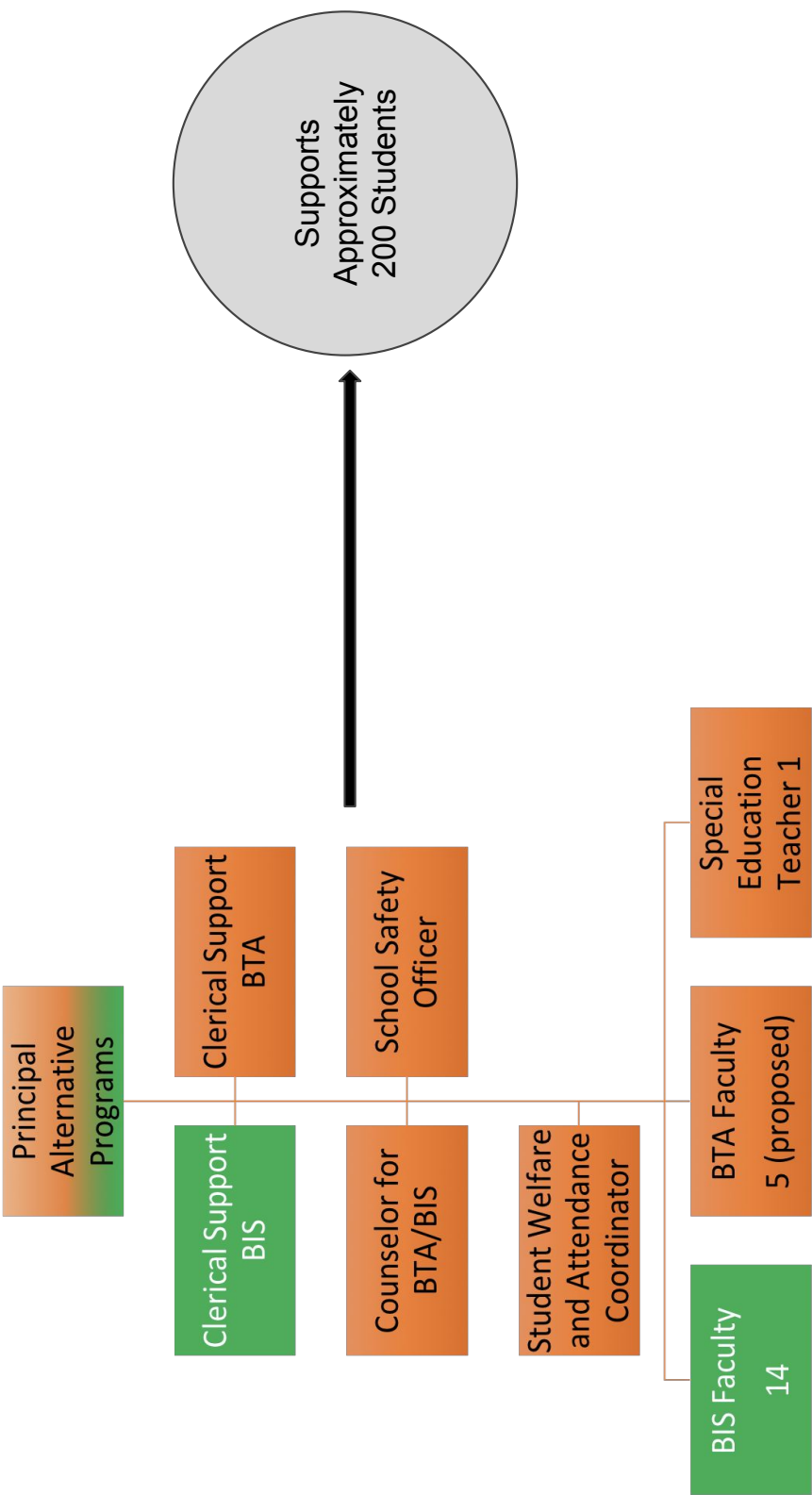
## **BHS Options**

- Concurrent access to 7th period classes\*
- Multi-School Athletic Agreements
- Co-development of future programs and pathways

### Master Schedule for BTA Continuation High School (EXAMPLE)

Teacher	Period 1	Period 2	Period 3	Period 4
a	US Hist	Af Am Hist	Prep	Gov/Econ
b	Math 1/2	Prep	Science 1	Math 3/4
c	Prep	Eng 1	Eng 2	Eng 3
d	Art Elective	Prep	PE/Dance	Spanish 1
e	CTE Elective	Science 2	CTE Elective	Prep

Proposed Blended Management Model for BTA and Independent Study





## **Additional Proposed Administrative Reductions for 18-19**

Dean of Students Berkeley High School

Vice Principal Malcolm X

1 Administrator from BTA or BIS

# End

Relevant slides from previous presentations on this subject follow.

# Berkeley Technology Academy (BTA)

## Recent History

**1996-2004:** Operates primarily as a continuation school

**2004:** Initial filing of a lawsuit: Smith v. Berkeley Unified School District, No. C-04-3306 WDB (N.D. Cal.) pertains to reassignments from comprehensive programs to alternatives

**2005:** Consent Decree approved and ordered by the court

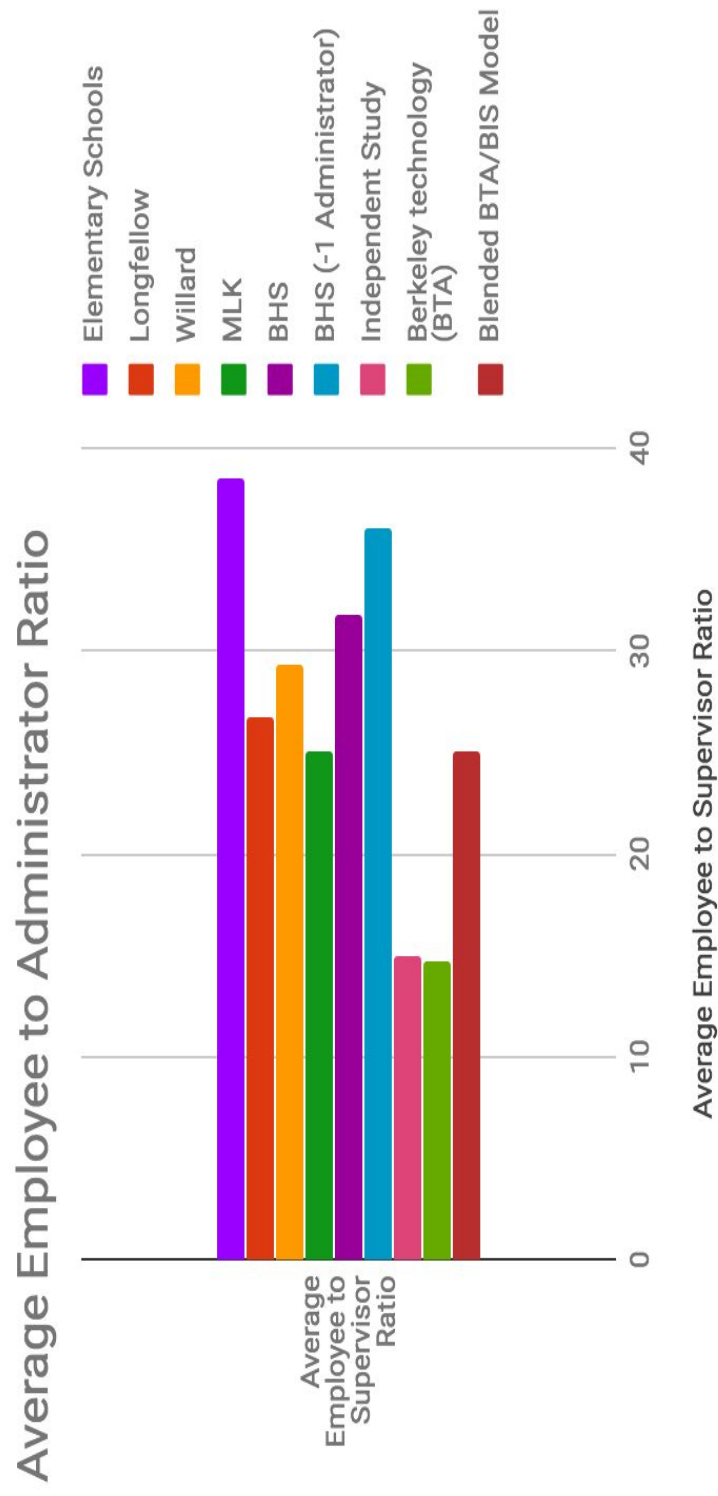
**2006:** Board Approves BTA Revisions to include A-G Eligibility Pathway

**2016-2017:** Decision to reduce staffing from 10.0 teachers to 8.0



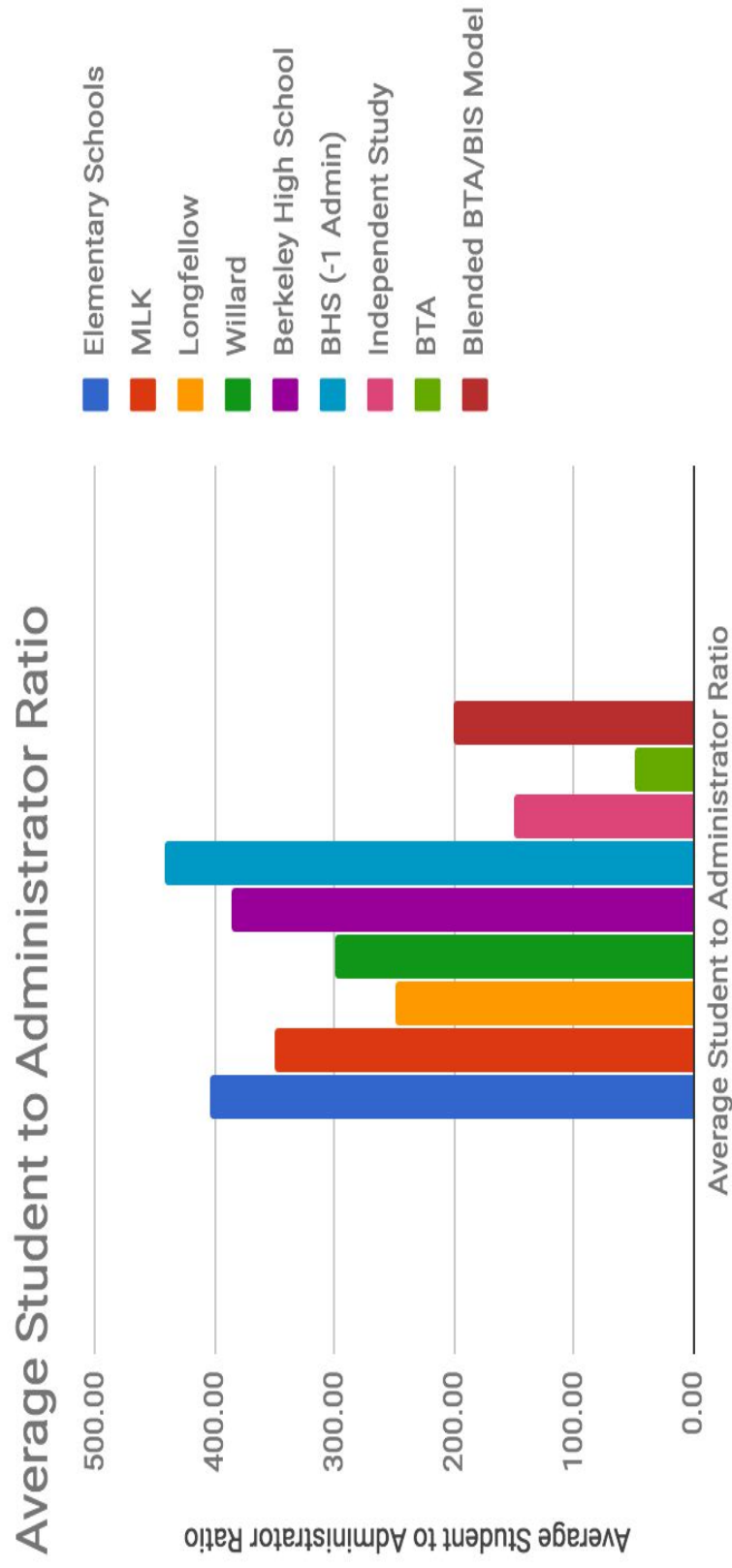


# Administrator/Employee Comparisons



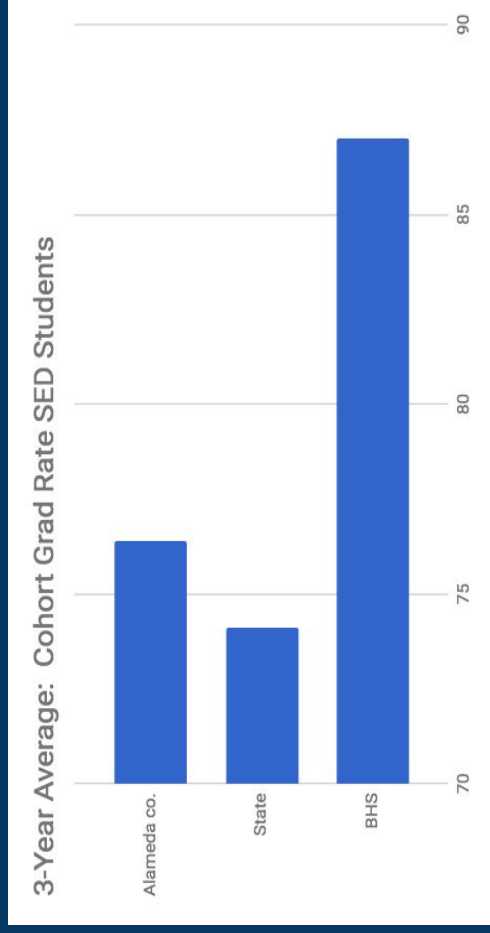
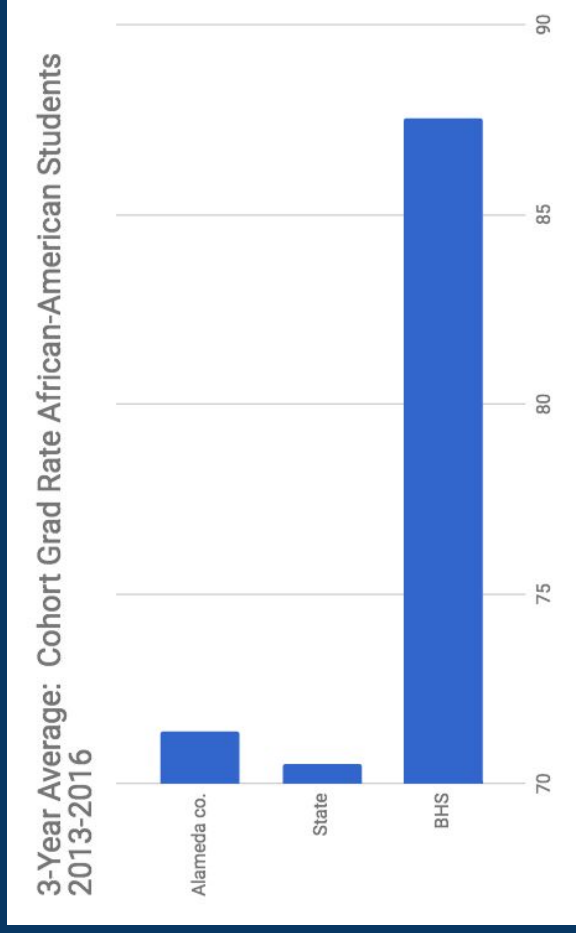


# Administrator/Student Comparisons

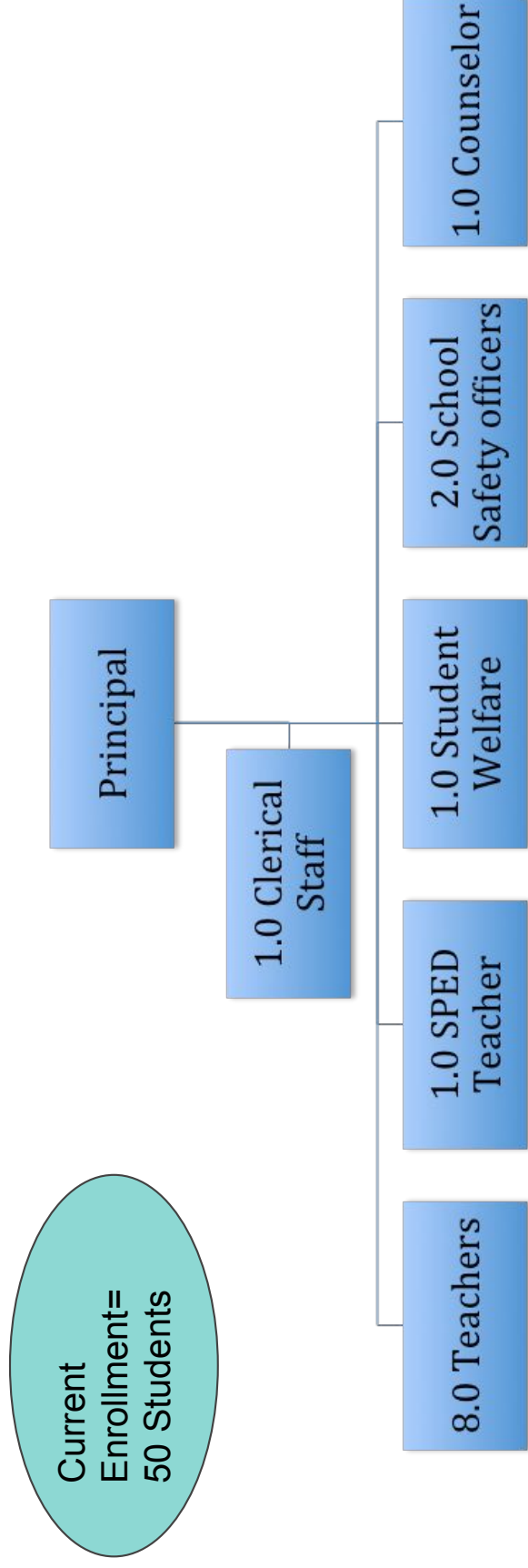


### **BTA Low Enrollment + BHS Comparative Grad Rates appear to indicate:**

- **BHS is doing a better job of supporting students who were in need of support and credit recovery**
- **BTA Eligible students/families are electing to stay at BHS**
- **Voluntary transfers are infrequent and we do NOT involuntarily transfer for credit deficiency**
- **Credit recovery is being accessed on campus at BHS**
- **Successes of SLC model have provided supports comparable to an alternative setting**



**Current 2017-2018 Staffing and Operational Structure for Berkeley Technology Academy (BTA)**



Results in a 6:1 Student/Teacher Ratio

# Current Staffing and Operational Structure for Independent Studies

