



**SANTA CLARA UNIFIED SCHOOL DISTRICT
FACILITIES NEEDS SUMMARY
REPORT TO THE BOARD OF TRUSTEES
JANUARY 25, 2018**



SANTA
CLARA
UNIFIED
SCHOOL
DISTRICT

1889 Lawrence Rd.
Santa Clara, CA
95051
(408) 423-2000
STANLEY ROSE III, Ed.D.
SUPERINTENDENT

Dear Neighbors:

We are proud of the innovative teaching and learning we provide our students here in the heart of Silicon Valley, with public schools in Santa Clara, Sunnyvale, San Jose, and Cupertino, Santa Clara Unified School District is committed to preparing students of all ages and abilities to succeed in an ever-changing world. Our students must be prepared to succeed in college and careers. And as a proud part of the local community, we know the success of our schools not only benefits our students, but also our homeowners and residents.

We are on the right track! We just built a new science, technology, engineering, and math (STEM) lab at Santa Clara High School, a new flexible science, technology, engineering, art, and math (STEAM) based elementary school, and are upgrading two elementary schools into full immersion computer science schools. But there is much more work to do to ensure all schools meet new and future standards. We have to upgrade all of our schools, not just a few. All of our schools must remain competitive with cutting edge programs, facilities, teaching strategies, and materials.

Our public schools serve over 15,400 TK-12 students and an additional 6,000 in Preschool through Adult School. Many of our schools were built in the 1950s and 1960s and are in constant need of repairs so that we can provide safe facilities and a great educational experience on all campuses. In addition, new state standards emphasize critical thinking skills and call upon teachers to explicitly teach the 21st Century skills essential for our students to be college and career ready.

These new teaching methodologies require new kinds of classrooms. The science and engineering labs of the 21st Century look very different than the labs many of us remember from our high school years. And Career Technical Education (CTE) has grown in its rigor, complexity, and skills required as students prepare for future careers. It's not enough to simply have a woodshop anymore. We need design labs, space for 3D printing and much, much more. All of this change requires the most up-to-date buildings, facilities, and infrastructure to move forward.

To meet the demand for repairs and for 21st Century classrooms, we have been working for nearly a year on a comprehensive facilities plan. This plan involves input from constituents across our community from our five-year strategic plan, and with additional input directly from neighbors through a mail survey, online questionnaire and direct individual conversations. Please read the enclosed plan to gain a better understanding of our school facilities needs and the direction we are taking to make critical improvements. This plan will go to our school board for approval on January 25, 2018. Our school board may consider placing a general obligation bond on the local ballot to generate the revenue required to fund the repairs and upgrades detailed herein.

Thank you for taking a minute to learn about what is happening in your local public schools – and thank you for your ongoing support. Your support helps make our schools excellent, vibrant, and connected to the community.

Sincerely,

Stanley Rose III, Ed.D.
Superintendent, Santa Clara Unified School District

Noelani Pearl Hunt
President, Board of Trustees

BOARD
OF EDUCATION

JIM CANOVA
ALBERT GONZALEZ
NOELANI PEARL HUNT
JODI MUIRHEAD
ANDREW RATERMANN
MARK RICHARDSON
MICHELE RYAN

"The mission of Santa Clara Unified School District is to prepare students of all ages and abilities to succeed in an ever-changing world."

TABLE OF CONTENTS

BOARD PRESIDENT AND SUPERINTENDENT’S LETTER.....	2
EXECUTIVE SUMMARY / OVERVIEW	5
FACILITIES NEEDS COST ESTIMATE SUMMARY	7
BOWERS ELEMENARY SCHOOL	8
BRACHER ELEMENTARY SCHOOL	9
BRALY ELEMENTARY SCHOOL	10
BRIARWOOD ELEMENTARY SCHOOL	11
CENTRAL PARK ELEMENTARY SCHOOL	12
HAMAN ELEMENTARY SCHOOL	13
HUGHES ELEMENARY SCHOOL.....	14
LAURELWOOD ELEMENARY SCHOOL.....	15
GEORGE MAYNE ELEMENTARY SCHOOL.....	16
MILLIKIN BASICS + ELEMENTARY SCHOOL.....	17
MONTAGUE ELEMENTARY SCHOOL.....	18
POMEROY ELEMENTARY SCHOOL.....	19
PONDEROSA ELEMENTARY SCHOOL.....	20
SCOTT LANE ELEMENTARY SCHOOL.....	21
SUTTER ELEMENTARY SCHOOL	22
WASHINGTON OPEN ELEMENTARY SCHOOL.....	23
WESTWOOD ELEMENTARY SCHOOL.....	24
DON CALLEJON K-8 SCHOOL	25
BUCHSER MIDDLE SCHOOL	26
CABRILLO MIDDLE SCHOOL.....	27
PETERSON MIDDLE SCHOOL	28
SANTA CLARA HIGH SCHOOL	29
WILCOX HIGH SCHOOL.....	30
WILSON EDUCATION OPTIONS	31
NEW VALLEY – GATEWAY HIGH SCHOOL.....	32
COMMUNITY DAY SCHOOL	33
MONTICELLO CAMPUS.....	34

PATRICK HENRY CAMPUS.....	35
CURTIS CAMPUS.....	36
MARTINSON CAMPUS.....	37
AGNEWS CAMPUS – HIGH SCHOOL.....	38
DISTRICT OFFICE CAMPUS.....	39



SANTA
CLARA
UNIFIED
SCHOOL
DISTRICT

1889 Lawrence Rd.
Santa Clara, CA
95051

(408) 423-2000

STANLEY ROSE III, Ed.D.
SUPERINTENDENT

FACILITIES NEEDS SUMMARY

JANUARY 25, 2018

EXECUTIVE SUMMARY / OVERVIEW

The Santa Clara Unified School District (District) includes approximately 560 buildings, with over 2.5 million square feet of building area, on over 430 acres of land. Over ninety-seven percent of that land was acquired and developed prior to 1965 (over 50 years ago). A large majority of those buildings were constructed before 1969. In the following three decades only minimal investments could be made in facilities repair and replacement because of declining enrollment and District budgets. In 1997 voters approved the Measure B General Obligation Bond which began a strategic, planned and long-range program to bring the District's schools from the brink of decay and refurbish and modernize them for a sustainable future.

The District has made great progress in repairing and replacing deteriorating facilities. The program to structurally reinforce all school buildings for seismic safety in the event of a moderate or severe earthquake has been extensive, but is almost complete. However, much other work remains. Many roofs, which in 1997 were in fair condition and were repaired, are now at the end of their serviceable life and should be replaced before structural damage occurs. Old storm drains and sewer pipes which were patched or left for future projects are now failing, hindering school operations and demanding increasing maintenance resources. Turf fields, even those re-constructed in the past cannot support the level of use now required by the school curriculum, sports programs and community expectations.

Increasingly, the ability to provide the educational programs needed and expected by the local community is being hampered by buildings and grounds that were designed and built in another era. STEM labs, collaboration spaces, project based learning facilities, sustainability goals, outdoor physical education and sports fields require major and sustained commitments of vision, effort and funding. New school facilities necessary to serve the new housing expansion cannot be completed with required developer fees and negotiated contributions alone. Sites wisely retained during declining enrollment and school closings in the 1980's are now required for new facilities to provide for expanding student populations.

All facility improvements must facilitate and enable the District's educational mission, for now and the foreseeable future, while also addressing increasingly complex building codes and life-safety requirements, expectations for higher levels of environmental sustainability and minimizing operational costs necessary to fund programs for educating students. Meeting all of these needs in a cost effective, economical way, with the highest return on investment of public

BOARD OF EDUCATION

JIM CANOVA

ALBERT GONZALEZ

NOELANI PEARL HUNT

JODI MUIRHEAD

ANDREW RATERMANN

MARK RICHARDSON

MICHELE RYAN

*"The mission of Santa Clara Unified School District is to prepare students
of all ages and abilities to succeed in an ever-changing world."*

funds, requires an implementable, realistic and accurate long-range facilities plan with a reliable, sustainable and adequate source of funding.

In this document, is a one-page recap of each site with aerial photos, identifying buildings, parking areas and fields, statistics for enrollment and programs, and a listing of needed projects and improvements. These lists were developed in conjunction with input from site staff, students and the community.

Also included is a one-page “Facilities Needs Cost Estimate Summary’ (Summary). This summary is divided into tiers. The four tiers list potential projects as defined by multiple meetings of the Facilities Needs Task Force (FNTF), as well as needed cost escalation and program scope reserves, estimated bond project management and bond issuance costs. The FNTF has met, and will continue to meet, during fiscal years 2016/17 and 2017/18. The four project tiers are -- Agnews High School, Current Projects, Field Improvements and School Site Estimates.

We would like to take this opportunity to thank the members of the FNTF for many hours of their time, as well as the entire team at the Bond Project Office.

Sincerely,

S/Mark Allgire

s/Larry Adams

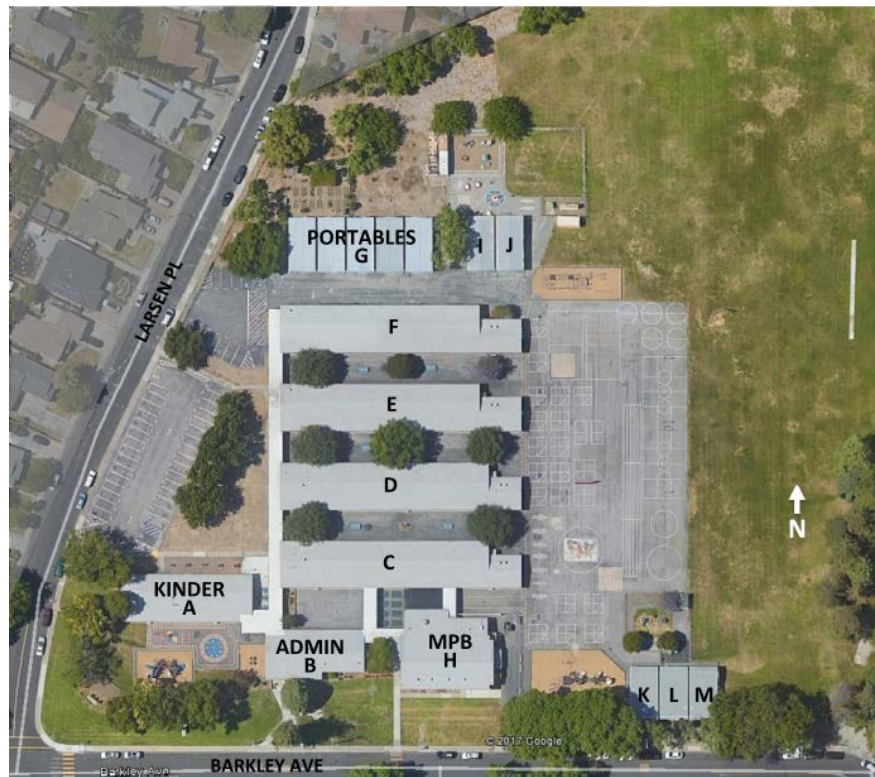
Mark Allgire, CPA, CSRM
Chief Business Official

Larry Adams
Director School Bond Projects

FACILITIES NEEDS COST ESTIMATE SUMMARY		Estimated Cost	Full Estimate Bond Allocation	Possible Bond Allocation	Min. Estimate Bond Allocation
AGNEWS HIGH SCHOOL					
Complete 1,600 Student Comprehensive High School (Increased from 400 students)		\$250,000,000	\$250,000,000	\$250,000,000	\$250,000,000
CURRENT PROJECTS	Current Estimates Estimates to Complete				
Peterson Middle School					
Replace Pool	\$3,866,000		\$3,866,000		
Locker Building	4,750,000	\$5,469,000	10,219,000		
Temporary Housing	450,000		450,000		
Fields	8,000,000	4,695,000	12,695,000		
Security Cameras - all sites	1,500,000		1,500,000		
Elementary Shade Structures (15)	1,400,000		1,400,000		
Elementary Play Structures (40)	6,000,000		6,000,000		
Monticello Campus	23,900,000	38,400,000	62,300,000		
Patrick Henry Master Plan	33,500,000	54,500,000	88,000,000		
Laurelwood Reconfiguration	8,500,000		8,500,000		
Martinson Property	3,000,000		3,000,000		
Subtotal Current Projects	\$94,866,000	\$103,064,000	\$197,930,000	\$197,930,000	\$197,930,000
FIELDS IMPROVEMENTS					
Santa Clara High School		\$10,701,000			
Wilcox High School		7,021,000			
Buchser Middle		55,500,000			
Cabrillo Middle School		500,000			
Peterson Middle School (See Current Projects)		---			
Elementary Schools (Included in School Site Estimates)		---			
Curtis Campus		9,400,000			
Wilson Campus		2,125,000			
Subtotal Fields Improvements		\$85,247,000	\$85,247,000	\$85,247,000	\$85,247,000
SCHOOL SITE ESTIMATES (Net of scope listed elsewhere)					
Bowers		\$40,600,000			
Bracher		37,300,000			
Braly		18,400,000			
Briarwood		41,700,000			
Central Park		1,300,000			
Community Day School		1,300,000			
Haman		33,800,000			
Hughes		48,500,000			
Laurelwood		19,400,000			
George Mayne		6,400,000			
Millikin Basics		17,400,000			
Montague		40,000,000			
Pomeroy		48,700,000			
Ponderosa		49,000,000			
Scott Lane		49,100,000			
Sutter		39,100,000			
Washington Open		43,300,000			
Westwood		40,000,000			
Don Callejon K-8		4,500,000			
Buchser Middle School		14,800,000			
Cabrillo Middle School		3,800,000			
Peterson Middle School		36,570,000			
Santa Clara High School		27,400,000			
Wilcox High School		39,200,000			
Wilson Education Option		42,500,000			
Subtotal School Site Estimates		\$744,070,000	\$744,070,000	\$188,280,000	\$0
TOTAL FACILITIES NEEDS COST ESTIMATES		\$1,277,247,000	\$1,277,247,000	\$721,457,000	\$533,177,000
Bond Project Mangement Costs			\$38,400,000	3%	\$20,000,000 2.8%
Cost Escalation Contingency Reserve			\$127,800,000	10%	\$73,543,000 10.2%
Program Scope Contingency Reserve			\$63,900,000	5%	\$35,000,000 4.9%
SUBTOTAL FUNDS NEEDED FOR PROJECTS			\$1,507,347,000		\$850,000,000
Estimated Bond Sale Costs and Underwriters Discount			\$45,300,000	3%	\$25,000,000 3%
POSSIBLE BOND MEASURE			\$1,552,647,000		\$875,000,000
			*		*

* Note: Bond Sale Costs and Cost Escalation Contingency Reserve amounts are rough estimates for these two scenarios

BOWERS ELEMENARY SCHOOL
2755 BARKLEY AVENUE, SANTA CLARA, CA 95051



Site Area:	10.5 Acres	Building Area	42,000 Square Feet
Constructed:	Buildings: 1956-1958	Portables: 1992-2010	
Population:	270 Students Grades K-5, 100 Special Education, Preschool, District Infants and Toddlers, Extended Day, YMCA		

Facility Needs:

- Replace roofs at the end of life expectancy.
- Replace single pane windows with dual glazed windows for energy efficiency and sound control.
- Replace Administration Buildings to accommodate current needs.
- Replace Multipurpose Buildings and kitchens to accommodate current student populations.
- Restroom addition and upgrades (Kindergarten, Preschool and Staff).
- Replace portable buildings with sustainable permanent construction.
- Upgrade facilities for existing Special Education programs at existing sites.
- Upgrade fire alarm systems to current code requirements.
- Upgrade video surveillance, intrusion alarm, and access control systems.
- Renovate turf, improve drainage, replace irrigation systems and upgrade field equipment.
- Provide shade structures over outdoor eating areas.
- Replace play structures installed in 1998.
- Address parking, drop-off and pick-up including walkways and site security.
- Staff parking lot improvement along Larsen Place Road (possibly increase to 50-55 spaces).
- Construct appropriate storage facilities.
- New furniture (Current student desks are outdated).

BRACHER ELEMENTARY SCHOOL
2700 CHROMITE DRIVE, SANTA CLARA, CA 95051



Site Area:	13.8 Acres	
Building Area	45,000 Square Feet	
Constructed:	Buildings: 1958-1959	Portables: 1990-1998
Population:	355 Students Grades K-5, 20-50 Special Education, Children's Center, Preschool, Extended Day, YMCA, Behavior Team	

Facility Needs:

- Replace roofs at the end of life expectancy.
- Replace single pane windows with dual glazed windows for energy efficiency and sound control.
- Replace Administration Buildings to accommodate current needs.
- Replace Multipurpose Buildings and kitchens to accommodate current student populations.
- Replace portable buildings with sustainable permanent construction (State Preschool, Extended Day, Behavior Team, YMCA).
- Replace Children's Center portables with new building.
- Modernize existing Administrative Building into new classroom and offices.
- Classroom conversions for collaboration and labs, upgrade restrooms.
- Upgrade fire alarm systems to current code requirements.
- Upgrade video surveillance, intrusion alarm, and access control systems.
- Renovate turf, improve drainage, replace irrigation systems and upgrade field equipment.
- Provide shade structures over outdoor eating areas.
- Replace play structures installed in 1998.
- Address parking, drop-off and pick-up including walkways and site security.
- New parking lot for Children's Center (South). New parking lot and school entrance (North).

BRALY ELEMENTARY SCHOOL
675 GAIL AVENUE, SUNNYVALE, CA 94086



Site Area:	9.06 Acres
Building Area	35,000 Square Feet
Constructed:	Buildings: 1964-1980 (MPB) Portables: 1997-1999
Population:	430 Students Grades TK-5, 24 Special Education, Extended Day, Behavior Specialist Team, City of Sunnyvale (Joint Use Field)

Facility Needs:

- Replace single pane windows with dual glazed windows for energy efficiency and sound control.
- Add square footage to existing Administration Buildings to accommodate current needs.
- Add square footage to existing Multipurpose Buildings and kitchens to accommodate current student populations.
- Restroom and ADA path of travel upgrades.
- Replace portable buildings with sustainable permanent construction.
- Upgrade facilities for existing Special Education programs at existing sites. Kindergarten location to be more centralized.
- Upgrade fire alarm systems to current code requirements.
- Upgrade video surveillance, intrusion alarm, and access control systems.
- Renovate turf, improve drainage, replace irrigation systems and upgrade field equipment.
- Provide shade structures over outdoor eating areas.
- Replace play structures installed in 1998.
- Address parking, drop-off and pick-up including walkways and site security.
- Perimeter fences and gates.
- Construct appropriate storage facilities.

BRIARWOOD ELEMENTARY SCHOOL
1930 TOWNSEND AVENUE, SANTA CLARA, CA 95051



Site Area:	12.13 Acres	
Building Area	59,700 Square Feet	
Constructed:	Buildings: 1954-56	Portables: 1971-1998
Population:	320 Students Grades TK-5, 20-50 Special Education Children's Center, Preschool, Extended Day, YMCA	

Facility Needs:

- Replace roofs at the end of life expectancy.
- Upgrade fire alarm systems to current code requirements.
- Restrooms and ADA path of travel upgrades.
- Address parking, drop-off and pick-up including walkways and site security.
- Upgrade video surveillance, intrusion alarm, and access control systems.
- Renovate turf, improve drainage, replace irrigation systems and upgrade field equipment.
- Replace single pane windows with double pane windows for energy efficiency and sound control.
- Replace play structures installed in 1998.
- Provide shade structures over outdoor eating areas.
- Construct new facilities for the Children's Center.
- Replace portable buildings with sustainable permanent construction.
- Replace Multipurpose Buildings and kitchens to accommodate current student populations.
- Replace Administration Buildings to accommodate current needs.
- Construct appropriate storage facilities.

CENTRAL PARK ELEMENTARY SCHOOL
2720 SONOMA PLACE, SANTA CLARA, CA 95051



Site Area:	7.5 Acres	(Constructed as Millikin Elementary School)
Building Area	39,000 Square Feet	
Constructed:	Buildings: 1955-2017 (New Office)	Portables: 1997-98
Population:	325 Students Grades, K-4 (As of 2017-18)	

Facility Needs:

- Provide outdoor classroom instruction and work area with ADA access
- Provide garden classroom with ADA access.

HAMAN ELEMENTARY SCHOOL
965 LOS PADRES BOULEVARD, SANTA CLARA, CA 95051

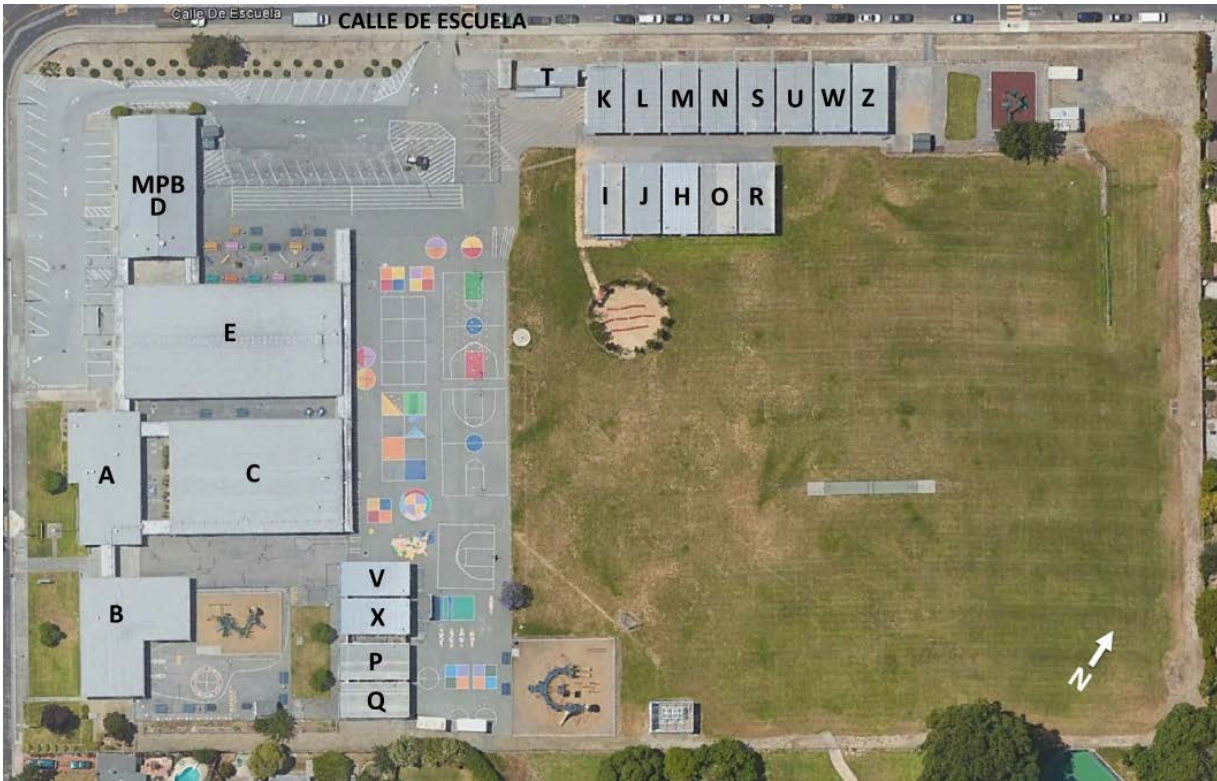


Site Area:	9.8 Acres	
Building Area	45,000 Square Feet	
Constructed:	Buildings: 1952-2003 (E and F)	Portables: 1997-2011
Population:	358 Students Grades K-5, 100 Special Education Deaf/Hard of Hearing Program, Extended Day	

Facility Needs:

- Replace roofs at the end of life expectancy.
- Upgrade fire alarm systems to current code requirements.
- Provide shade structures over outdoor eating areas.
- Upgrade video surveillance, intrusion alarm, and access control systems.
- Restrooms and ADA path of travel upgrades.
- Replace play structures installed in 1998.
- Parking, drop-off and pick-up, staff parking, rolling gate, walkways and site security.
- Replace single pane windows with double pane windows for energy efficiency and sound control.
- Renovate turf, improve drainage, replace irrigation systems and upgrade field equipment.
- Upgrade facilities for existing Special Education programs at existing sites.
- Replace Multipurpose Buildings and kitchens to accommodate current student populations.
- Replace Administration Buildings to accommodate current needs.
- Replace portable buildings with sustainable permanent construction.
- Construct appropriate storage facilities.

HUGHES ELEMENARY SCHOOL
4949 CALLE DE ESCUELA, SANTA CLARA, CA 95054

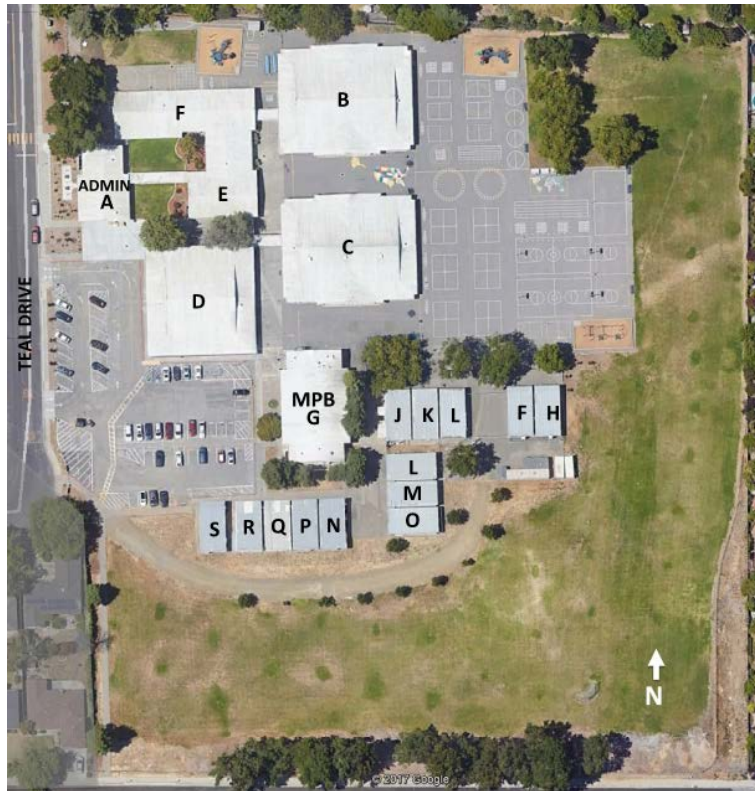


Site Area:	8.9 Acres	
Building Area	25,000 Square Feet	
Constructed:	Buildings: 1962-1983 (MPB)	Portables: 1997-98
Population:	418 Students Grades K-5, 22 Special Education, Special Autistic Program, Extended Day, District & State Preschool, YMCA	

Facility Needs:

- Upgrade fire alarm systems to current code requirements.
- Window coverings for classrooms.
- Replace roofs at the end of life expectancy.
- Renovate turf, improve drainage, replace irrigation systems and upgrade field.
- Upgrade video surveillance, intrusion alarm, and access control systems.
- Replace play structures installed in 1998.
- Provide shade structures over outdoor eating areas.
- Upgrade facilities for existing Special Education programs at existing sites.
- Upgrade lighting to LED with digital controls.
- Site perimeter security fence and gates.
- Replace Multipurpose Buildings and kitchens to accommodate current student populations.
- Replace Administration Buildings to accommodate current needs.
- Replace portable buildings with sustainable permanent construction.
- Construct appropriate storage facilities.

LAURELWOOD ELEMENARY SCHOOL
955 TEAL DRIVE, SANTA CLARA, 95051

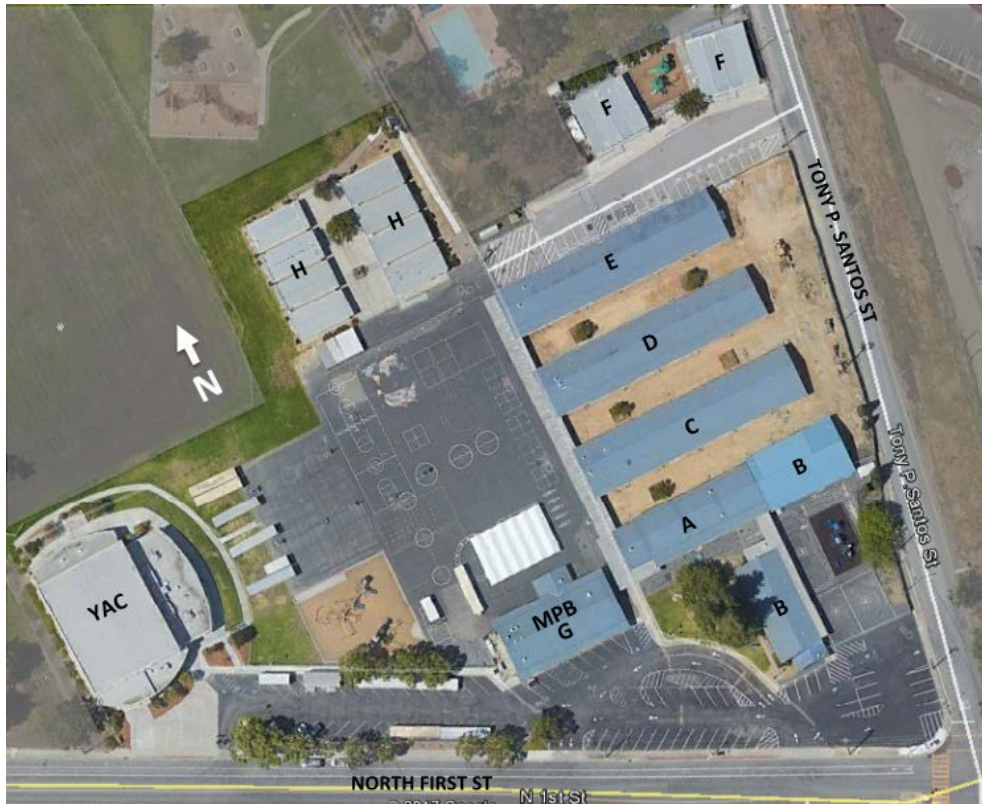


Site Area:	10.29 Acres
Building Area	45,554 Square Feet
Constructed:	Buildings: 1964-1980 (MPB) Portables: 1997-2016
Population:	679 Students Grades K-5, 25 Special Education, Extended Day (3), Private Preschool, Boy Scouts / Girl Scouts

Facility Needs:

- Replace roofs at the end of life expectancy.
- Replace single pane windows with dual glazed windows for energy efficiency and sound control.
- Replace Administration Buildings to accommodate current needs.
- Replace Multipurpose Buildings and kitchens to accommodate current student populations.
- Restrooms and ADA path of travel upgrades.
- Remove portable buildings, improve parking and drives, and modify campus if grade configuration is changed in coordination with a new elementary school at Patrick Henry.
- Upgrade facilities for existing Special Education programs at existing sites.
- Upgrade fire alarm systems to current code requirements.
- Upgrade video surveillance, intrusion alarm, and access control systems.
- Renovate turf, improve drainage, replace irrigation systems and upgrade field equipment.
- Provide shade structures over outdoor eating areas.
- Replace play structures installed in 1998.
- Address parking, drop-off and pick-up including walkways and site security.
- Construct appropriate storage facilities.

GEORGE MAYNE ELEMENTARY SCHOOL
5030 NORTH FIRST STREET, ALVISO, SAN JOSE, CA 95002

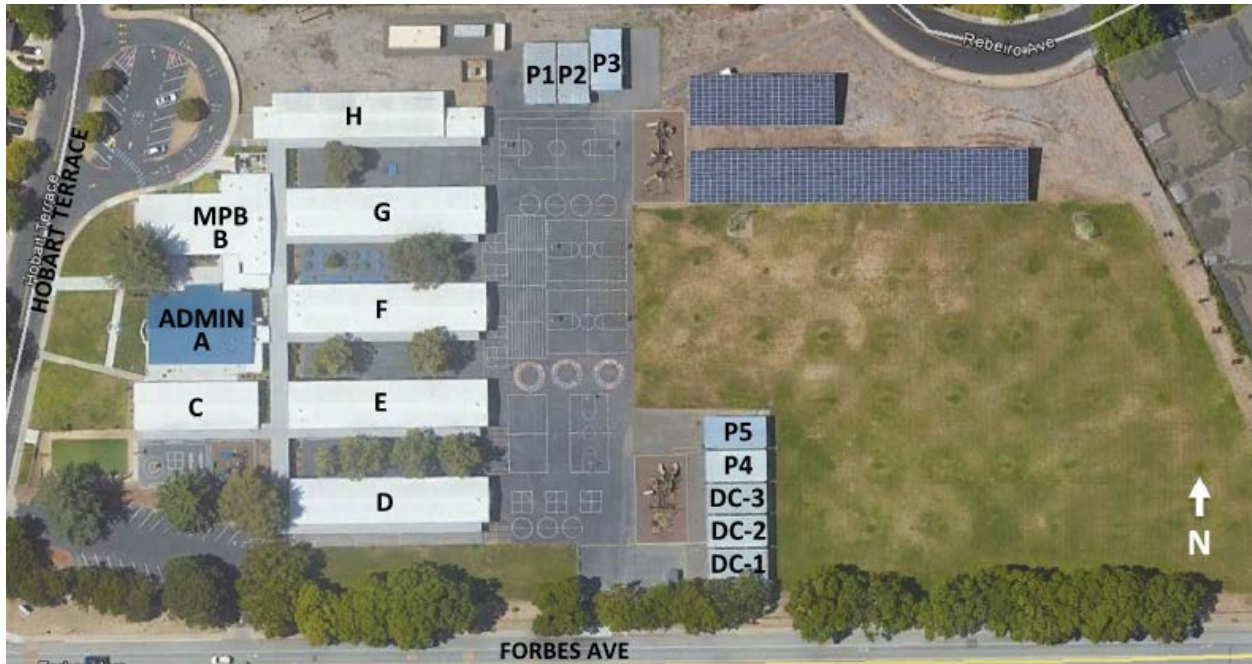


Site Area: 7.4 Acres
Building Area 56,380 Square Feet
Constructed: Buildings: 1955-58, 2003 (YAC) Portables: 1997-2001
Population: 511 Students Grades K-5, Youth Activities Center

Facility Needs:

- Replace roofs at the end of life expectancy.
- Replace play structures and improve playgrounds.
- New amphitheater in front of Alviso Youth Center grass area
- Patio area behind staff lounge
- Classrooms in the Alviso Youth Center need modernization.
- Perimeter fencing and gates at City Park and Youth Center.

MILLIKIN BASICS + ELEMENTARY SCHOOL
615 HOBART TERRACE, SANTA CLARA, CA 95051



Site Area:	7.54 Acres	(Constructed as Mariposa Elementary School)
Building Area	33,000 Square Feet	
Constructed:	Buildings: 1955-1959, 2013 (Administration)	Portables: 2012-2016
General Population:	540 Students Grades K-5, Extended Day	

Facility Needs:

- Address parking, drop-off and pick-up including walkways and site security. Gates need panic hardware.
- Upgrade lighting to LED with digital controls.
- Replace portable buildings with sustainable permanent construction.
- Provide shade structures over outdoor eating areas.
- Upgrade video surveillance, intrusion alarm, and access control systems.

MONTAGUE ELEMENTARY SCHOOL
750 LAURIE AVENUE, SANTA CLARA 95054

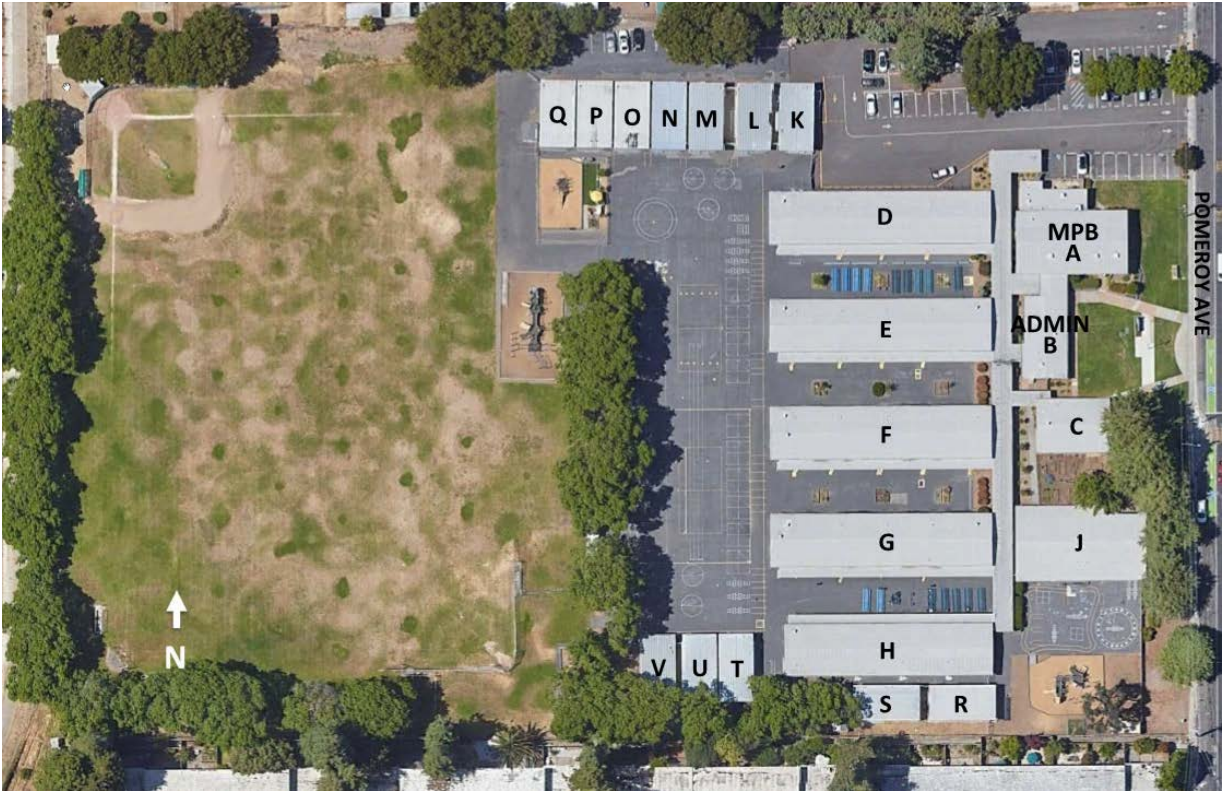


Site Area: 9.93 Acres
Building Area: 46,400 Square Feet
Constructed: Buildings: 1961-1967 Portables: 1980-2003
Population: 356 Students Grades TK-5, 50-60 Special Education, Preschool, YMCA

Facility Needs:

- Replace roofs at the end of life expectancy.
- ADA path of travel and restroom upgrades.
- Upgrade fire alarm systems to current code requirements.
- Upgrade video surveillance, intrusion alarm, and access control systems.
- Replace play structures installed in 1998.
- Provide shade structures over outdoor eating areas.
- Restrooms in the Classrooms for Pre-K to Kindergarten
- Renovate turf, improve drainage, replace irrigation systems and upgrade field equipment.
- Provide Open Space/Collaboration Classroom similar to Makerspace.
- Upgrade facilities for existing Special Education programs.
- Upgrade lighting to LED with digital controls.
- Replace Multipurpose Buildings and kitchens to accommodate current student populations.
- Replace Administration Buildings to accommodate current needs.
- Replace portable buildings with sustainable permanent construction.
- Provide outdoor learning areas.
- Construct appropriate storage facilities.

POMEROY ELEMENTARY SCHOOL
1250 POMEROY AVENUE, SANTA CLARA, CA 95051

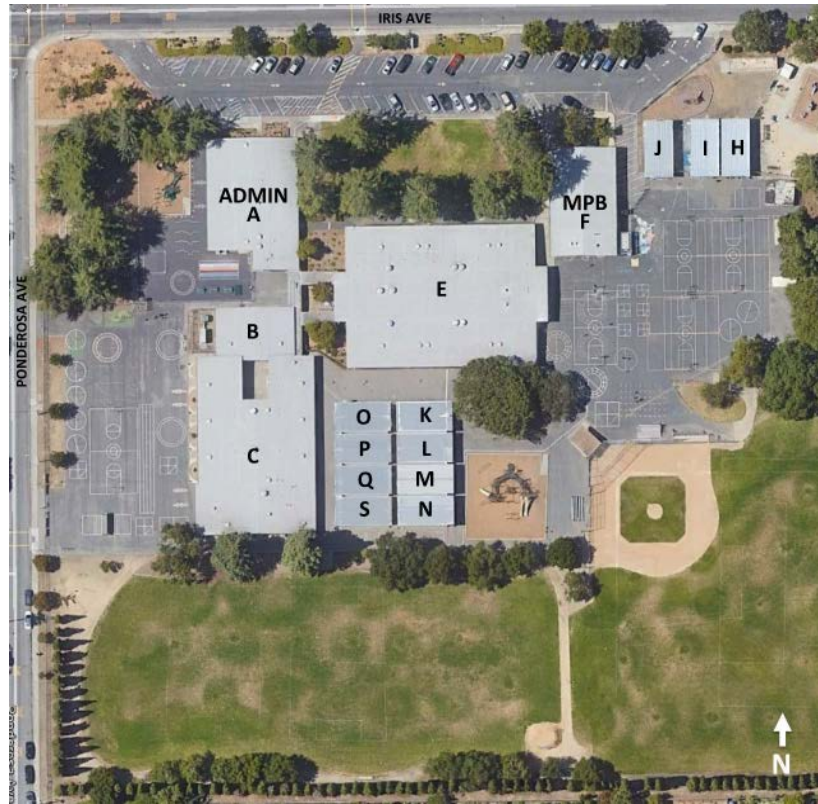


Site Area:	9.9 Acres
Building Area	30,783 Square Feet
Constructed:	Buildings: 1951-1963 Portables: 1991-1998
Population:	427 Students Grades TK -5, 31 Special Education

Facility Needs:

- Replace roofs at the end of life expectancy.
- Upgrade fire alarm systems to current code requirements.
- Address parking, drop-off and pick-up including walkways and site security.
- ADA path of travel and restroom upgrades.
- Replace single pane windows with double pane windows for energy efficiency and sound control.
- Provide shade structures over outdoor eating areas.
- Renovate turf, improve drainage, replace irrigation systems and upgrade field equipment.
- Upgrade facilities for existing Special Education programs at existing sites.
- Upgrade lighting to LED with digital controls.
- Upgrade video surveillance, intrusion alarm, and access control systems.
- Replace play structures installed in 1998.
- Replace Administration Buildings to accommodate current needs.
- Replace Multipurpose Buildings and kitchens to accommodate current student populations.
- Replace portable buildings with sustainable permanent construction.
- Construct appropriate storage facilities.

PONDEROSA ELEMENTARY SCHOOL
804 PONDEROSA AVENUE, SUNNYVALE, CA 94086

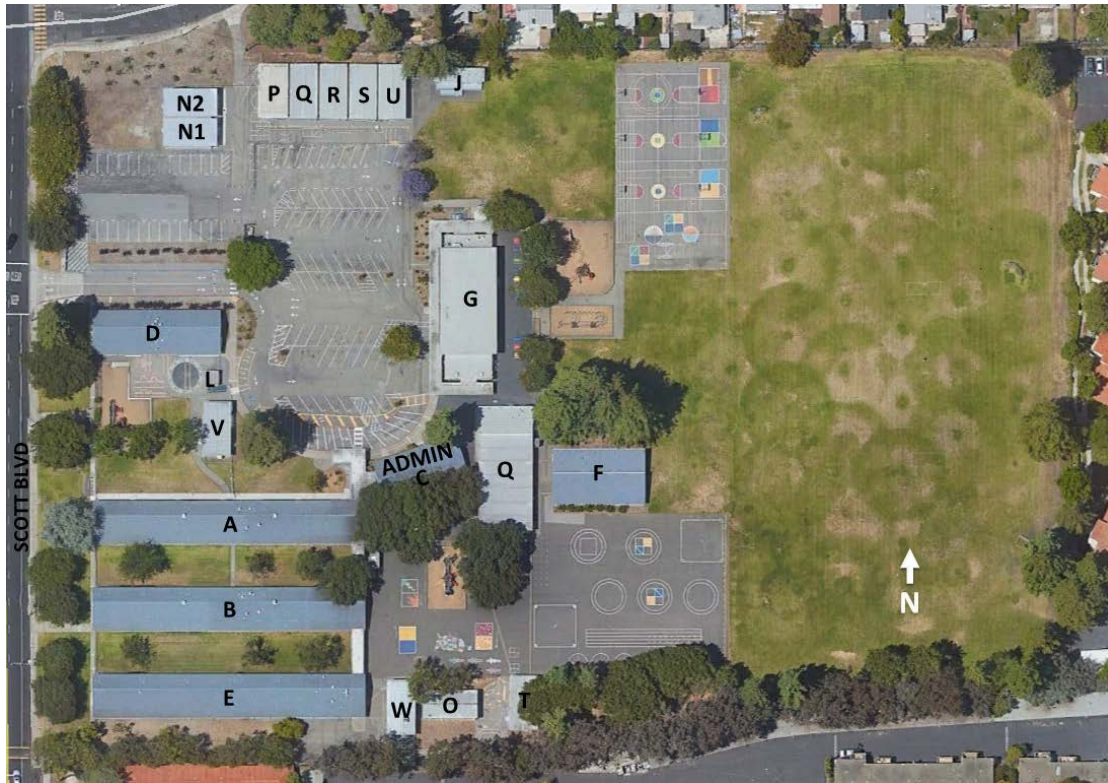


Site Area: 10 Acres
Building Area: 51,300 Square Feet
Constructed: Buildings: 1964-1967 Portables: 1997-2013
Population: 642 Students Grades, 36 Special Education, Preschool, Extended Day/Kids Club, City of Sunnyvale (Joint Use Field)

Facility Needs:

- Replace roofs at the end of life expectancy.
- Replace play structures installed in 1998.
- Provide shade structures over outdoor eating areas.
- ADA path of travel and restroom upgrades.
- Upgrade fire alarm systems to current code requirements.
- Replace single pane windows with double pane windows for energy efficiency and sound control.
- Upgrade video surveillance, intrusion alarm, and access control systems.
- Address parking, drop-off and pick-up including walkways and site security.
- Upgrade facilities for existing Special Education programs.
- Perimeter site security fencing around the campus.
- Renovate turf, improve drainage, replace irrigation systems and upgrade field equipment.
- Replace Administration Buildings to accommodate current needs.
- Replace Multipurpose Buildings and kitchens to accommodate current student populations.
- Replace portable buildings with sustainable permanent construction.
- Provide more green space near Kindergarten play area.
- New / flexible furniture
- Construct appropriate storage facilities.

SCOTT LANE ELEMENTARY SCHOOL
1925 SCOTT BOULEVARD, SANTA CLARA, CA 95051

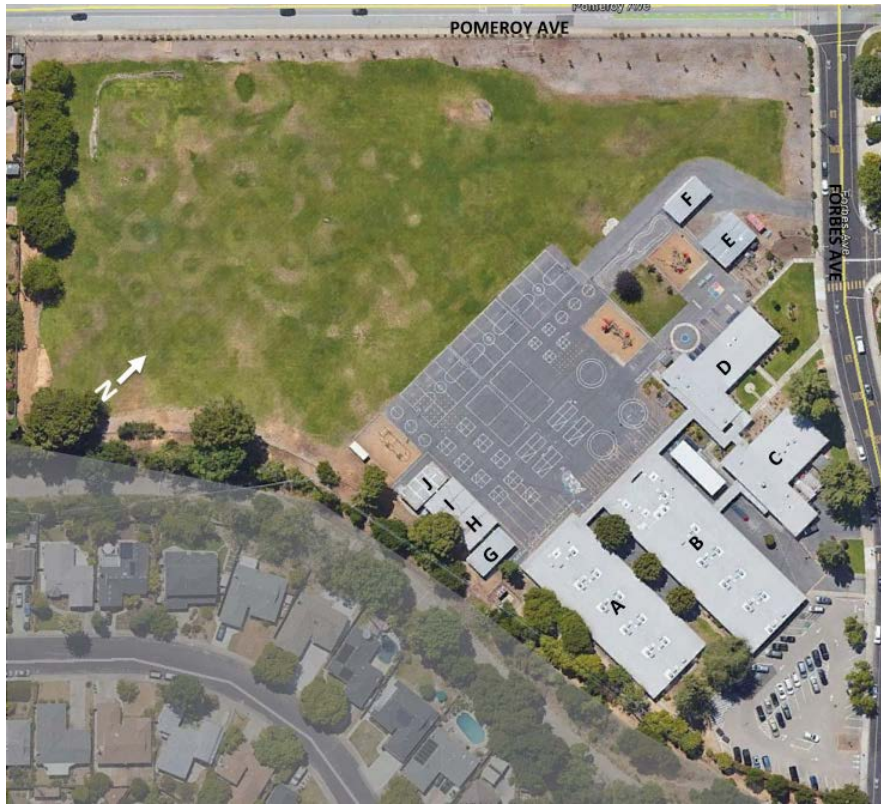


Site Area: 12.04 Acres
Building Area 34,500 Square Feet
Constructed: Buildings: 1952-1958 Portables: 1990-1997, 2007, 2010
Population: 374 Students Grades TK-5, 50 Special Education

Facility Needs:

- Replace roofs at the end of life expectancy.
- Replace single pane windows with dual glazed windows for energy efficiency and sound control.
- Replace Administration Buildings to accommodate current needs.
- Replace Multipurpose Buildings, kitchens, new Media Center and create new 4 to 5 classrooms to accommodate current student populations.
- Restrooms and ADA path of travel upgrades.
- Renovate portables P, Q, R, S, and U for Extended Day Care.
- Upgrade fire alarm systems to current code requirements.
- Upgrade video surveillance, intrusion alarm, and access control systems.
- Renovate turf, improve drainage, replace irrigation systems and upgrade field equipment.
- Provide shade structures over outdoor eating areas.
- Replace play structures installed in 1998.
- Address parking, drop-off and pick-up including walkways and site security.
- Construct appropriate storage facilities.

SUTTER ELEMENTARY SCHOOL
3200 FORBES AVENUE, SANTA CLARA, CA 95051



Site Area: 10.6 Acres
Building Area: 45,200 Square Feet
Constructed: Buildings: 1960-1963 Portables: 1957-1997
Population: 438 Students Grades TK-5, 21 SDC, Preschool, Extended Day

Facility Needs:

- Replace roofs at the end of life expectancy.
- ADA path of travel and restroom upgrades.
- Upgrade fire alarm systems to current code requirements.
- Upgrade video surveillance, intrusion alarm, and access control systems.
- Replace single pane windows with double pane windows for energy efficiency and sound control.
- Replace play structures installed in 1998.
- Outdoor shade structures.
- Address parking, drop-off and pick-up including walkways and site security.
- Upgrade facilities for existing Special Education programs and District Vision Program.
- Replace Administration Buildings to accommodate current needs.
- Replace Multipurpose Buildings and kitchens to accommodate current student populations.
- Renovate turf, improve drainage, replace irrigation systems and upgrade field equipment.
- Replace portable buildings with sustainable permanent construction.
- Construct appropriate storage facilities.

WASHINGTON OPEN ELEMENTARY SCHOOL
270 WASHINGTON AVENUE, SANTA CLARA, CA 95050



Site Area:	13.06 Acres	
Building Area	30,365 Square Feet	
Constructed:	Buildings: 1954-1968	Portables: 1991-1998
Population:	330 Students Grades K-5	

Facility Needs:

- Replace roofs at the end of life expectancy.
- Replace single pane windows with dual glazed windows for energy efficiency and sound control.
- New Administration Buildings to accommodate current needs.
- Replace Multipurpose Buildings and kitchens to accommodate current student populations.
- Renovate Library.
- Modernize Building D to accommodate additional classrooms.
- Restrooms and ADA path of travel upgrades.
- Replace portable buildings with sustainable permanent construction.
- Upgrade fire alarm systems to current code requirements.
- Upgrade video surveillance, intrusion alarm, and access control systems.
- Renovate turf, improve drainage, replace irrigation systems and upgrade field equipment.
- Provide shade structures over outdoor eating areas.
- Replace play structures installed in 1998.
- Address parking, drop-off and pick-up including walkways and site security.
- Upgrade parking lot lighting.
- Construct appropriate storage facilities.
- New flexible furniture.

WESTWOOD ELEMENTARY SCHOOL
435 SARATOGA AVENUE, SANTA CLARA, CA 95050



Site Area: 8.8 Acres
Building Area 40,900 Square Feet
Constructed: Buildings: 1951-2002 Portables: 1997-2008
Population: 395 Students Grades K-5, 80 Special Education, SDS Preschool, Occupational Therapy, District Pre-K Assessment

Facility Needs:

- ADA path of travel and restroom upgrades.
- Address parking, drop-off and pick-up including walkways and site security.
- Construct appropriate storage facilities.
- Renovate turf, improve drainage, replace irrigation systems and upgrade field equipment.
- Upgrade video surveillance, intrusion alarm, and access control systems.
- Upgrade fire alarm systems to current code requirements.
- Replace single pane windows with double pane windows for energy efficiency and sound control.
- Replace Administration Buildings to accommodate current needs.
- Replace Multipurpose Buildings and kitchens to accommodate current student populations.
- Replace portable buildings with sustainable permanent construction.
- Construct new facilities for elementary autism program.
- Replace play structures installed in 1998.
- Replace roofs at the end of life expectancy.
- Provide shade structures over outdoor eating areas.
- New facilities for District Special Education Program.
- Buildings E & F modernization.

DON CALLEJON K-8 SCHOOL

4176 LICK MILL BOULEVARD, SANTA CLARA, CA 95054



Site Area:	7.45Acres	
Building Area	67,580 Square Feet	
Constructed:	Buildings: 2006	Portables: 2015
Population:	576 Students Grades K-5	
	378 Students Grades 6-8	
	954 Students Total	

Facility Needs:

- Site security fencing around the school.
- Shade Structure near Multipurpose and Kindergarten area.
- Motorized clerestory shades in the Library Building C.
- Repair and replace roofing and gutter.
- Condensate drain at entry.
- Kitchen equipment modification.

BUCHSER MIDDLE SCHOOL
1111 BELLOMY STREET, SANTA CLARA, CA 95050

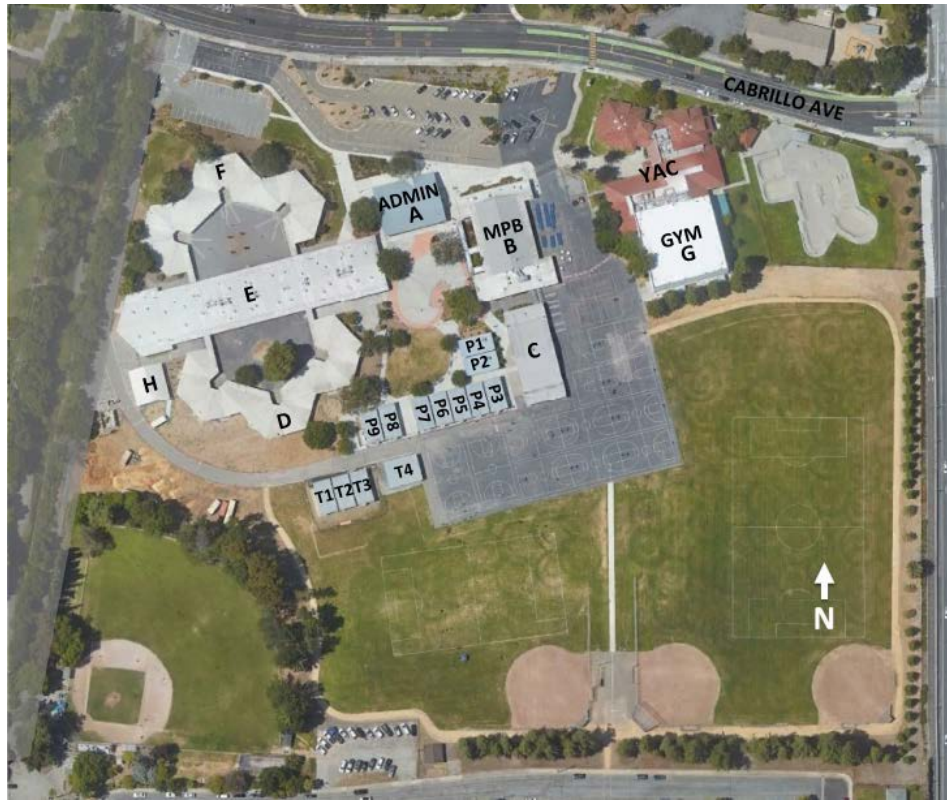


Site Area:	33.73 Acres	(Constructed as Santa Clara High School)
Building Area	136,375 Square Feet	
Constructed:	Buildings: 1937-1969, MPB 2015,	Portables: 2004
Population:	982 Students Grades 6-8, 30 Special Education, County Special Education Program, YMCA	

Facility Needs:

- Upgrade video surveillance, intrusion alarm, and access control systems.
- Upgrade fire alarm systems to current code requirements.
- Upgrade facilities for existing Special Education programs at existing sites.
- Renovate or replace Townsend Field, Elmer Johnson Field and Washington Park. Stadium Improvements with new bleachers.
- Renovate or new Concession Stands and Storage Shed.
- Parking Lot Improvement at Washington Open lot.
- School Monument Sign.
- Culinary Classroom upgrade.
- Shade structure in the quad by the Multipurpose Building.

CABRILLO MIDDLE SCHOOL
2550 CABRILLO AVENUE, SANTA CLARA, CA 95051



Site Area: 25.6 Acres
Building Area 76,953 Square Feet
Constructed: Buildings: 1961 Portables: 2001-2010
Population: 893 Students Grades 6-8, 32 Special Education

Facility Needs:

- Upgrades to exterior dining area
- Exterior outdoor improvement: pave play court areas between Buildings E , F and D, resurface existing basketball and pickle ball courts, replace basketball standards (16) and replace 3 basketball backstops.
- Replace athletic field bleachers
- Upgrade video surveillance, intrusion alarm, and access control systems.
- Upgrade fire alarm systems to current code requirements.

PETERSON MIDDLE SCHOOL
1380 ROSAILLA AVENUE, SUNNYVALE, CA 94087



Site Area:	47.26 Acres	(Built as Peterson High School)
Building Area	133,000 Square Feet	
Constructed:	Buildings: 1964-1969, 2011 (Library-Administration)	
General Population:	923 Students Grades 6-8, 96 Special Education, After School Programs, Santa Clara Swim Club, Performance Groups, PTSA	

Facility Needs:

- Complete replacement or modernization of Boys and Girls Locker Building. Complete construction of new replacement pool and pool house.
- ADA accessibility improvements in Brian Osborne Nature Center.
- Site security fence and gates.
- Reconstruct fields, tracks and new bleachers including stadium field in coordination with Master Plan for Patrick Henry Campus.
- Upgrade video surveillance, intrusion alarm, and access control systems.
- Repair or replace asphalt paving. Install traffic controls.
- Covered exterior eating area landscape improvements and shade structure.
- Improve Site Lighting in the Parking Lots.
- Replace swimming pool and tennis court fencing.
- Resurface tennis, basketball and pickleball courts.

SANTA CLARA HIGH SCHOOL
3000 BENTON STREET, SANTA CLARA, CA 95051

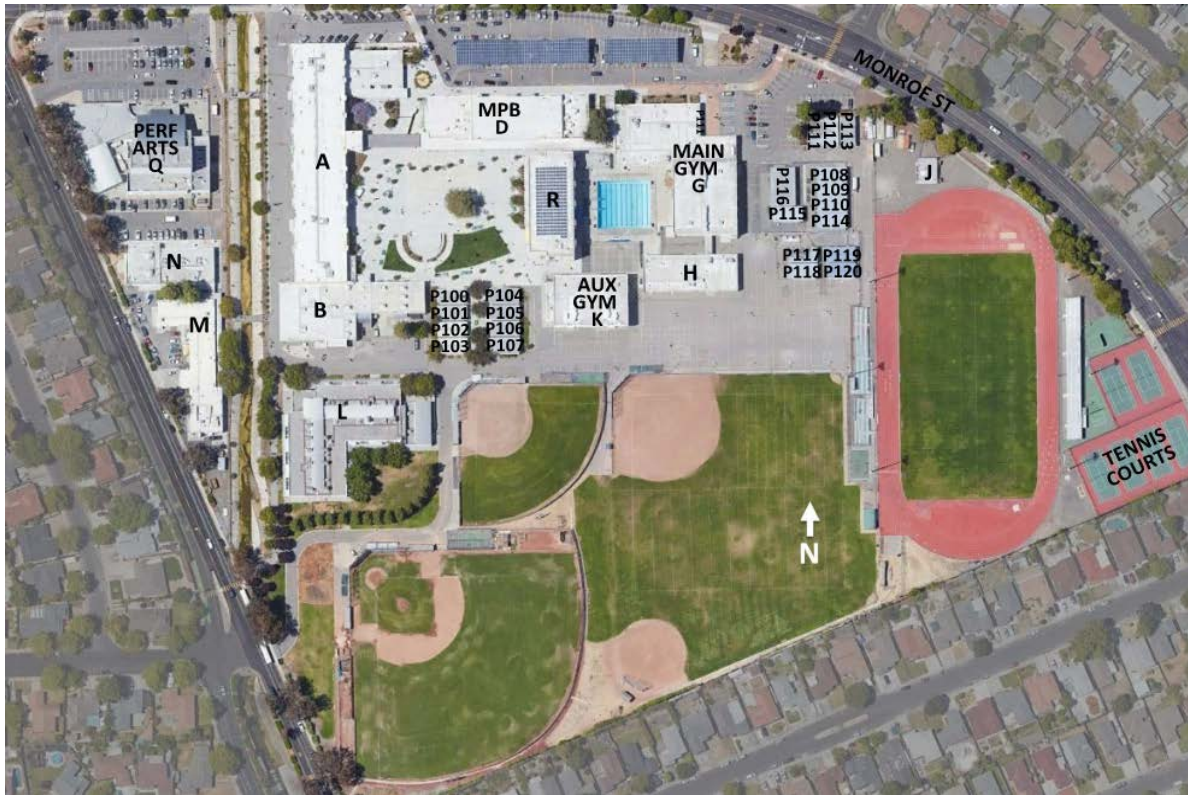


Site Area:	31.017 Acres	(Constructed as Buchser High School)
Building Area	192,500 Square Feet	
Constructed:	Buildings: 1957-1998, 2006 (Office)	Portables: 2014-2017
General Population:	2,033 Students Grades 9-12, 80 Special Education	

Facility Needs:

- Replace game and practice fields with artificial turf.
- Replace visitor stadium grandstands.
- Modernize science building.
- Replace portable complex with permanent buildings.
- Upgrade video surveillance, intrusion alarm, and access control systems.
- Upgrade fire alarm systems to current code requirements.
- Upgrades to site lighting (security) and outdoor pool lighting.
- Outdoor basketball courts improvement.
- Replace pool boilers.
- Replace single glazed windows at Building C Library Corridor.
- Convert Computer Labs to collaboration center or learning centers.
- Adding Teacher Resource Center in Science Bldg.
- Shade structures in quad (extending from Multipurpose Bldg.
- Appropriate storage for maintenance supplies and materials.

WILCOX HIGH SCHOOL
3250 MONROE STREET, SANTA CLARA, CA 95051



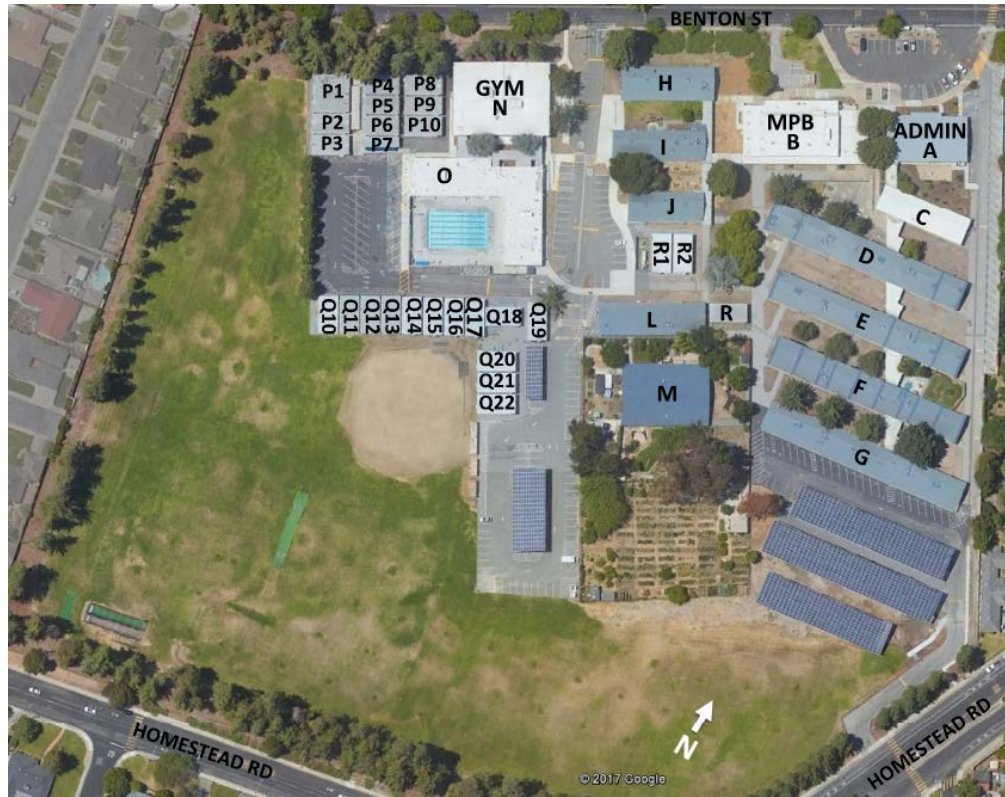
Site Area: 32.27 Acres
Building Area 184,200 Square Feet
Constructed: Buildings: 1960-1977, 2011(3-Story Classroom Bldg.) Portables: 1997-2017
General Population: 1,969 Students Grades 9-12, 80 Special Education, Work Ability Program

Facility Needs:

- Replace game and practice fields with artificial turf.
- Replace stadium grandstands.
- Upgrade stadium lighting.
- Modernize science building (include mini-quad outdoor area).
- Replace eight portable complex with new two-story building (Math).
- Upgrade video surveillance, intrusion alarm, and access control systems.
- Upgrade fire alarm systems to current code requirements.
- East & South Parking Improvement and frontage road landscape improvement.
- Security Lighting between the Math Portables and Science Building.
- Building J Field House - Modernize Stadium Snack bar and Toilets.
- Resurfacing Tennis Courts, Windscreen, Fencing, Nets and Bleachers.
- Add Swimming Scoreboards, water polo materials and additional lighting.
- New flexible classroom furniture.

WILSON EDUCATION OPTIONS

1840 BENTON STREET, SANTA CLARA, CA 95051



Site Area:	23.61 Acres	(Constructed as Wilson Intermediate School)
Building Area	146,400 Square Feet	
Constructed:	Buildings: 1954-1960, 2016 (Office)	Portables: 1991-2009
Population:	Adult Education, Wilson High School 101 Students Grades 9-12, Wilson Preschool, Independence Network, Skills Plus Program, Special Education	

Facility Needs:

- Replace roofs at the end of life expectancy.
- Restrooms and ADA path of travel upgrades.
- Renovate turf, improve drainage, replace irrigation systems and upgrade field equipment.
- Modernize or replace old portables.
- Facilities for Adult Ed Program Enhancement. Replace all portables.
- Relocate post-secondary special education program, move to Patrick Henry.
- Upgrade video surveillance, intrusion alarm, and access control systems.
- Upgrade fire alarm systems to current code requirements.
- Resurface Parking Lots (North & South)
- Garden Classroom – create outdoor instruct and learning area to host elementary school class field trips.

NEW VALLEY – GATEWAY HIGH SCHOOL
1875 LAWRENCE ROAD, SANTA CLARA, CA 95051



Site Area: 1.3 Acres
Building Area 14,760 Square Feet
Constructed: Buildings: NA Portables: 1987-2001
General Population: 190 Students Grades 9-12

Facility Needs:

- See Monticello Campus for proposed new facility.

COMMUNITY DAY SCHOOL
3450 BROOKDALE DRIVE, SANTA CLARA, 95051



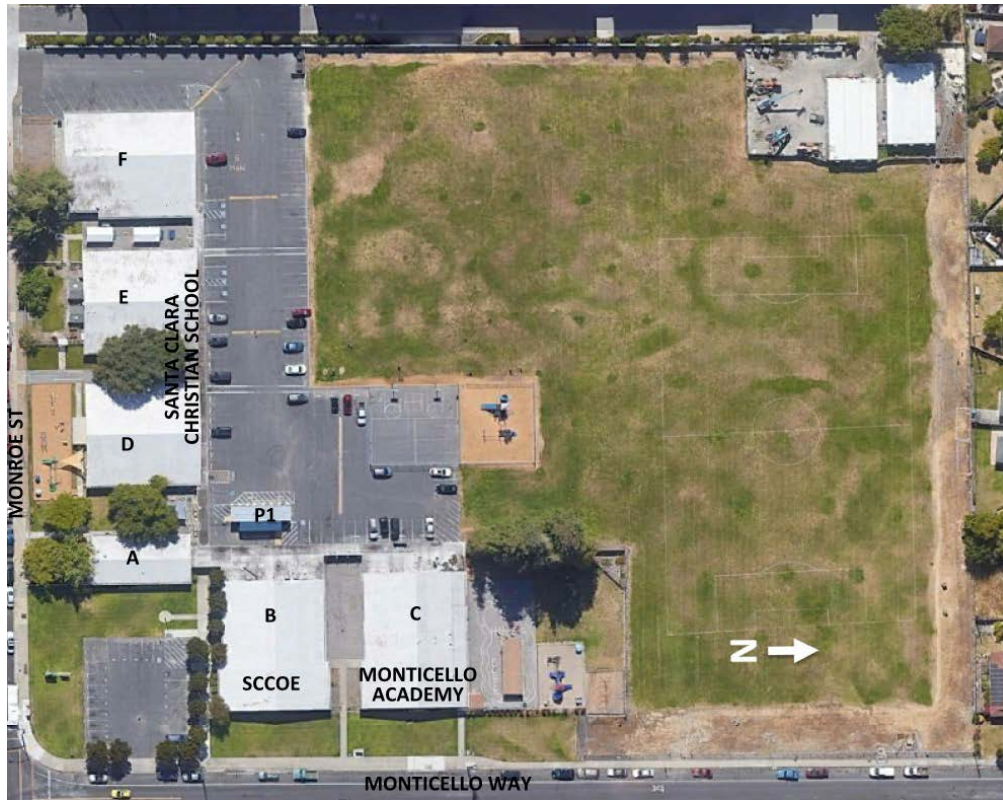
Site Area: 0.7 Acres
Building Area 4,800 Square Feet
Constructed: Buildings: NA Portables: 2008
General Population: Approximately 30 Students Grades 6-12

Facility Needs:

- Improvements to Physical Education Area with new asphalt, striping and new basketball standards and hoops.
- Perimeter fencing and gates for security.

MONTICELLO CAMPUS

3421 MONROE STREET, SANTA CLARA, CA 95051



Site Area:	9.7 Acres	
Building Area	33,000 Square Feet	
Constructed:	Buildings: 1960-64	Portables: NA
General Population:	Leased to Various Tenants, Santa Clara County Office of Education Special Education Program	

Facility Needs:

- New Campus for New Valley High School. Relocate portable buildings from District Office Campus, construct new administration building, multipurpose building and two-story classroom building.
- Future site of up to 500 student elementary school if/when needed.
- New artificial turf fields for use by New Valley High School, Wilcox High School sports practice and Public.

PATRICK HENRY CAMPUS
1095 DUNFORD WAY, SUNNYVALE, CA 94087



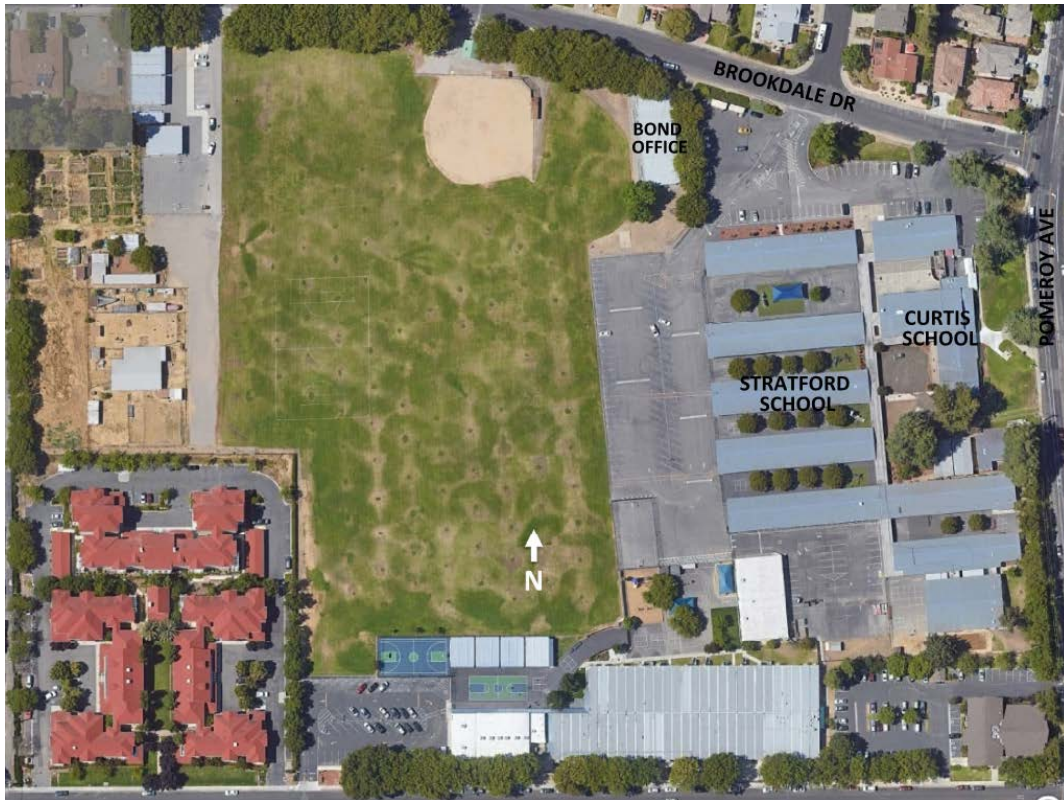
Site Area:	23.8 Acres
Building Area	74,000 Square Feet
Constructed:	Buildings: 1960-62
Population:	District Resource Center, District Print Shop, Leased to Various Tenants

Facility Needs:

- New 600 Student Elementary Campus to address enrollment growth in the area bounded by El Camino Boulevard, Lawrence Express Way, Interstate 280 and Wolf Road.
- New driveways, parking and fields.
- Facility to house Santa Clara County Special Education Program and District Post-secondary Special Education Program.
- Design and construction must coordinate with improvements to Peterson Middle School Fields, Farm and a new District Resource Center.

CURTIS CAMPUS

890 POMEROY AVENUE, SANTA CLARA, CA 95051



Site Area: 26.5 Acres

Building Area: 70,300 Square Feet *

Constructed: Buildings: 1957-63

* Not including Casa Del Maestro Teacher Apartments, Monticello Academy, Community Day School and Bond Project Office.

Population: Leased to Stratford School, Monticello Academy and 4H Program. District uses include: Casa Del Maestro Apartments (lower left), Community Day School (upper left), Bond Project Office and Facilities Development and Planning Department Office.

Facility Needs:

- Improvements to driveways, parking and fields.
- New roof on Locker Building.

MARTINSON CAMPUS

1350 HOPE DRIVE, SANTA CLARA, CA 95054



Site Area:	1.2 Acres
Building Area	7,900 Square Feet
Constructed:	Building:1995 (?)
Population:	Leased to Martinson Child Development Center

Facility Needs:

- New Building for Pre-School and Extended Day Programs.
- Improvements to parking lot for additional parking spaces and new play structures.

AGNEWS CAMPUS – HIGH SCHOOL
3518 ZANKER ROAD, SAN JOSE, CA 95134



Site Area: 20 Acres (High School portion)
Building Area 255,000 Square Feet
Constructed: 2022
Population: 1,600 Students Grades 9-12

Facility Needs:

- Expand the 400 student program to include a new comprehensive high school for 1,600 students, including aquatic center, stadium, gymnasiums and performing arts center.

DISTRICT OFFICE CAMPUS
1889 LAWRENCE ROAD, SANTA CLARA, CA 95051



Site Area:	7.1 Acres
Building Area	20,000 Square Feet District Office, 14,760 Square Feet New Valley H.S., 40,300 Square Feet Support Facilities
Constructed:	Buildings: 1955-2001
Population:	District Office, Transportation, Warehouse, Maintenance and Grounds, Technology Offices, New Valley/Gateway High School.

Facility Needs:

- Insufficient space for District administrative staff and programs
- Inadequate parking
- Out of date facilities for public access.
- Portions of Facilities, Warehouse and Technology programs housed on remote sites.

Note: Costs estimates have not been included for this work.