

Projected Enrollments

2017-18 to 2024-25

March 8, 2018, Board Presentation

Chart 1: Actual and Projected Total Fall TK-8 Enrollments, 1993 to 2024

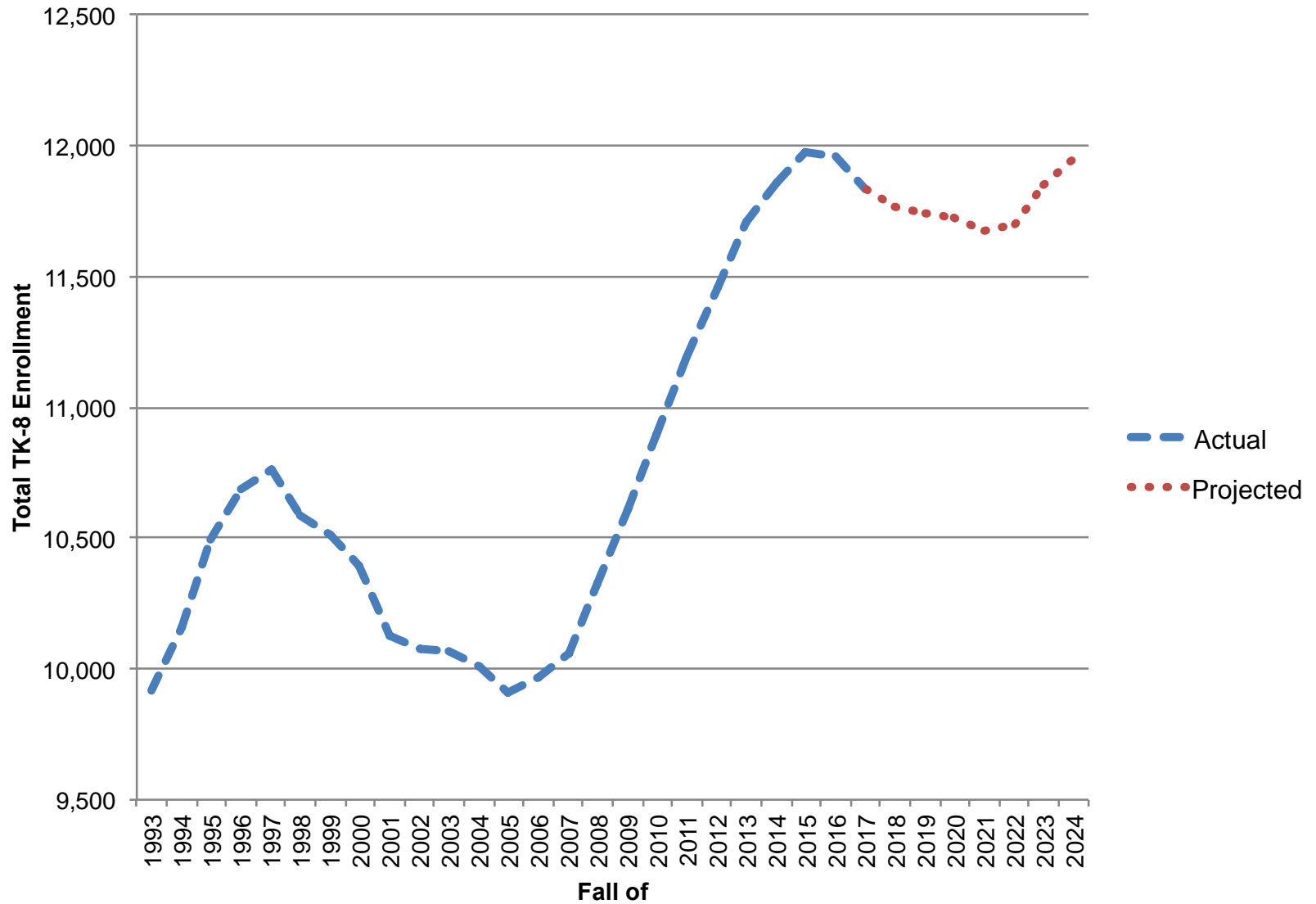


Table 1 (PowerPoint version): Actual and Projected Students by Grade and Grade Level, October of 2017 to 2024
(with color highlighting of the individual grade amounts that are relatively low in pink and high in green for the respective grades)

Early Oct. of	Actual and Projected Total Enrollment by Grade (including SDC and a nominal number of NPS students)										Actual and Projected Total Enrollment by Grade Group		
	TK	K	1	2	3	4	5	6	7	8	TK-5	6-8	TK-8
2017	245	1,387	1,358	1,336	1,248	1,246	1,297	1,233	1,265	1,220	8,117	3,718	11,835
2018	242	1,370	1,366	1,333	1,298	1,213	1,215	1,263	1,215	1,250	8,037	3,728	11,765
2019	245	1,385	1,354	1,344	1,306	1,264	1,189	1,193	1,251	1,208	8,087	3,652	11,739
2020	247	1,397	1,361	1,328	1,312	1,267	1,234	1,164	1,177	1,240	8,146	3,581	11,727
2021	248	1,402	1,371	1,333	1,294	1,270	1,235	1,207	1,149	1,166	8,153	3,522	11,675
2022	248	1,402	1,375	1,343	1,299	1,254	1,237	1,211	1,189	1,139	8,158	3,539	11,697
2023	249	1,407	1,388	1,360	1,321	1,272	1,234	1,224	1,205	1,191	8,231	3,620	11,851
2024	249	1,411	1,394	1,372	1,337	1,294	1,251	1,221	1,217	1,206	8,308	3,644	11,952

Total Grade-Level Change in One Year, to October of 2018	-80	10	-70
Total Grade-Level Change in Two Years, to October of 2019	-30	-66	-96
Total Grade-Level Change in Three Years, to October of 2020	29	-137	-108

Total Grade-Level Change in Four Years, to October of 2021	36	-196	-160
Total Grade-Level Change in Five Years, to October of 2022	41	-179	-138

Total Grade-Level Change in Seven Years, to October of 2024	191	-74	117
--	------------	------------	------------

Table 2 (PowerPoint version):

Actual and Projected Resident Student Populations for the Current and Planned Attendance Areas

(with color highlighting for actual and projected resident shifts by 25+; orange for negative and yellow for positive differences)

School	Actual Resident and Enrollment part				Projected Resident Student Population part					
	Actual Res. Stu. Shift in Last Year	Actual October 2017 (excluding TK)			Projected SMFCSD Students Residing in this Area in the Relevant Grades (excluding TK)					
		Resident Students	Attending Adjustment	Attending Enrollment	Early October of			Change to October of		
					2018	2019	2020	2018	2019	2020
San Mateo Park	-5	499	-127	372	505	507	512	6	8	13
Baywood	-7	725	-14	711	706	705	705	-19	-20	-20
Sunnybrae (K-5)	-21	652	-226	426	642	627	641	-10	-25	-11
Highlands	-9	631	-94	537	620	630	624	-11	-1	-7
Meadow Heights	9	359	-56	303	361	367	367	2	8	8
Beresford	-7	301	-36	265	306	307	311	5	6	10
Laurel	-7	623	-120	503	617	625	628	-6	2	5
George Hall	33	419	4	423	425	456	476	6	37	57
LEAD	-1	754	-251	503	730	719	711	-24	-35	-43
Bayside (for K-5)	-12	464	-214	250	453	463	476	-11	-1	12
Audubon	5	894	-160	734	916	929	941	22	35	47
Foster City	-23	953	-83	870	949	954	968	-4	1	15
Brewer Island	-6	435	117	552	422	421	414	-13	-14	-21
Other K-5	-21	158	-158		138	126	121	-20	-32	-37
Borel	16	1,132	-54	1,078	1,133	1,135	1,114	1	3	-18
Abbott	-7	856	-5	851	860	841	827	4	-15	-29
Bayside (for 6-8)	10	591	58	649	595	567	548	4	-24	-43
Bowditch	-43	1,072	-47	1,025	1,065	1,030	1,011	-7	-42	-61
Other 6-8	13	67	-67		75	78	78	8	11	11

Table 3B (PowerPoint version):

Resident Student Trends between Existing Dwellings, New Housing and Incoming Inter-District Attendance
(color highlighting in pink for losses by 30+ students and lavender for gains by 30+ students in the K-8 and TK-8 totals)

Existing Housing Type/ Data Subject	Fall of	Resident District-Enrolled Students				% Change in TK-8
		K-2	3-5	6-8	TK-8	
Combined Affordable-to-Moderate SFD and Most Affordable-to-Intermediate ATT	2014	2,496	2,407	2,043	7,108	
	2015	2,449	2,408	2,089	7,101	
	2016	2,373	2,329	2,161	7,027	
	2017	2,394	2,204	2,183	6,925	
3-Year Change Within Grade Group		-102			-183	-3%
3-Year Change from Prior Grade Group			-292	-224		
Combined Middle and Upper Income SFD and Upscale ATT	2014	1,432	1,493	1,338	4,358	
	2015	1,438	1,433	1,443	4,432	
	2016	1,532	1,368	1,428	4,428	
	2017	1,535	1,388	1,387	4,404	
3-Year Change Within Grade Group		103			46	1%
3-Year Change from Prior Grade Group			-44	-106		
Total for Areas with Consequential New Housing added since Sept. 2010	2014	60	53	61	177	
	2015	66	72	74	216	
	2016	85	86	89	264	
	2017	97	96	81	279	
3-Year Change Within Grade Group		37			102	NA
3-Year Change from Prior Grade Group			36	28		
All Other (incoming inter-district students & a few students at unlocatable addresses)	2014	89	88	35	213	
	2015	74	104	44	228	
	2016	69	110	54	237	
	2017	55	103	67	227	
3-Year Change Within Grade Group		-34			14	7%
3-Year Change from Prior Grade Group			14	-21		

Table 5 (PowerPoint version): Comparison of Local Births to Corresponding Kindergarten Student Populations

Birth Year* and School Enrollment Date	Total Births in Zip Codes 94401-94404	SMFC-Enrolled Resident Kindergarten Population	Ratio of Kindergarten Population to Births
"2006" Births and Fall 2011 Kindergarten Students	1,898	1,417	75%
"2007" Births and Fall 2012 Kindergartners plus 100% of TK	1,961	1,504	77%
"2008" Births and Fall 2013 Kindergartners plus 50% of TK	1,916	1,427	74%
"2009" Births and Fall 2014 Kindergartners plus 33.3% of TK	1,897	1,370	72%
"2010" Births and Fall 2015 Kindergartners	1,895	1,398	74%
"2011" Births and Fall 2016 Kindergartners	1,877	1,375	73%
"2012" Births and Fall 2017 Kindergartners	1,870	1,373	73%
Average Relevant to Kindergarten in last Four Years (good correlation with only a 2% range)			73%

	note that totals below dip and then recover compared to totals above	Potential SMFC-Enrolled Resident Kindergarten Total (excluding TK)	
		at 4-Year Avg. Ratio	at Current Ratio
"2013" Births and Potential Fall 2018 Kindergartners	1,828	1,337	1,342
"2014" Births and Potential Fall 2019 Kindergartners	1,855	1,357	1,362
"2015" Births and Potential Fall 2020 Kindergartners	1,887	1,381	1,385

Note: Years listed have proportionate birth amounts in the listed year and the prior year so as to properly correlate to the kindergarten eligibility period shown (five years later).

Table 6 (PowerPoint version)
Average Student Generation Rates (SGRs) from Sampled Recently Built Housing Units in the SMFCSD

Category of Recently Built Housing	Number of Units in Sample	Current District-Enrolled Resident Student Population by Grade Range				Current TK-8 SGR
		TK-2	3-5	6-8	TK-8	
Mainly Market-Rate Developments in:						
City of San Mateo	1300	24	30	17	71	0.05
City of Foster City	466	38	27	23	88	0.19
Mainly BMR ATT Developments	122	28	35	34	97	0.80

Table 7 (PowerPoint version): Projected Additional Dwelling Units

Housing Developments	Projected Additional Residences in Twelve Months to October 1 of							Total
	2018	2019	2020	2021	2022	2023	2024	
Mainly Market-Rate Developments in:								
City of San Mateo	330	314	393	485	487	289	292	2,590
City of Foster City	170	87	94	2	0	44	43	440
Mainly BMR ATT Developments	0	68	0	0	0	152	150	370
Total	500	469	487	487	487	485	485	3,400