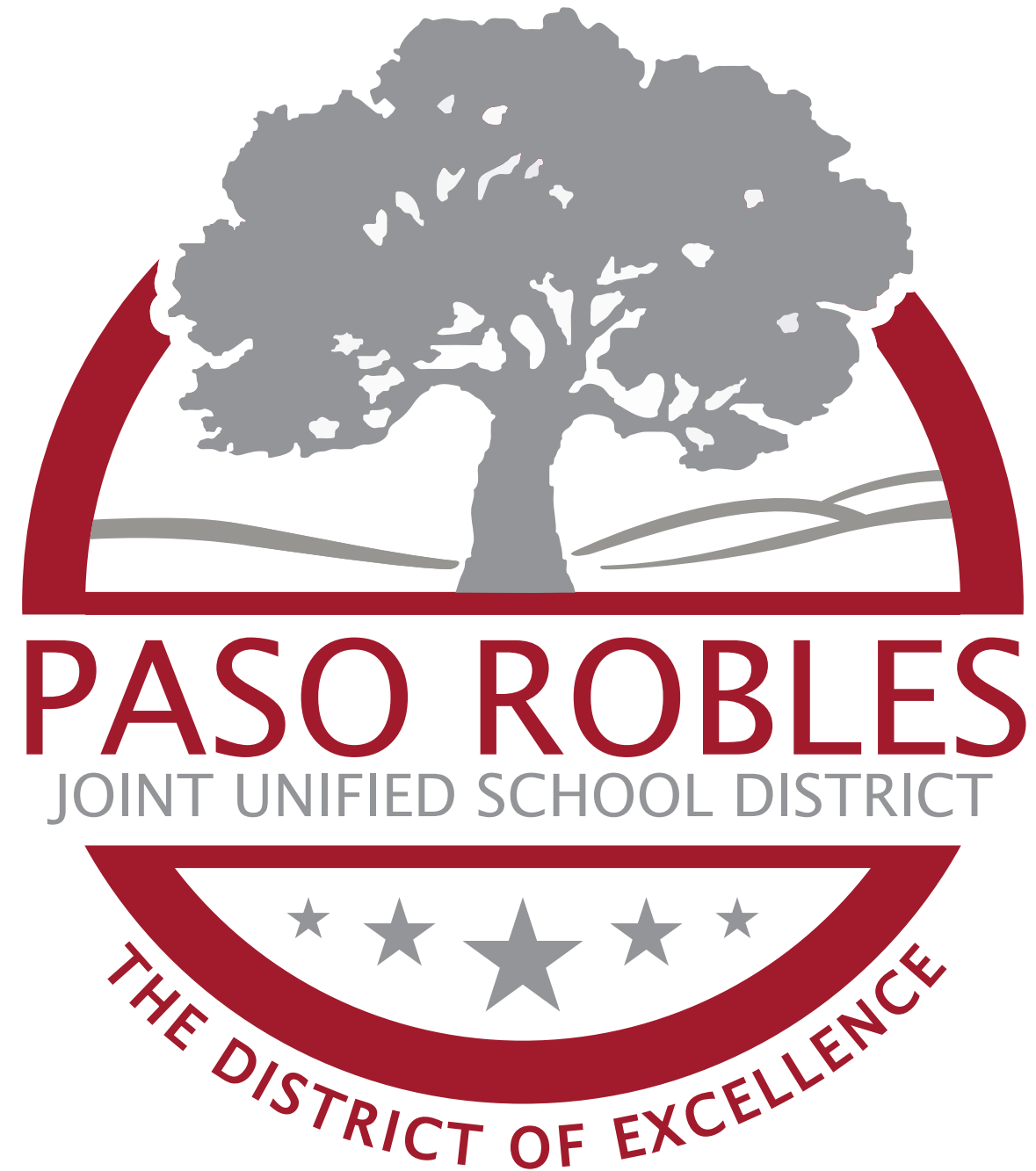


PASO ROBLES

BOND UPDATE

PASO ROBLES JOINT UNIFIED SCHOOL DISTRICT \ MARCH 13, 2018



SIM+PBK and Paso Robles Unified School District Administrative Staff, in a continued effort, has reached out to students, staff, municipal officials, and the Paso Robles Community to develop the Measure M improvement and new construction goals identified in the Bond Program.

After establishing the Master Schedule for the Measure M Bond Program, the team has had design meetings (Charrettes) with different levels of the PRJUSD community. The goal was to establish various scopes that adequately reflect the needs and expectations of the Paso Robles Community.

The goal of this presentation is to provide an update to the Paso Robles Joint Unified School District Board and the Community.

FLAMSON MIDDLE SCHOOL

TEMPORARY CAMPUS AND 10 CLASSROOM ADDITION



PROJECT UPDATE:

- SURVEY COMPLETED
- CONSTRUCTION DOCUMENTS PHASE
- ANTICIPATED DSA SUBMITTAL BY LATE APRIL
- ANTICIPATED PROJECT COMPLETION JULY 2019



MARIE BAUER EARLY CHILDHOOD EDUCATION CENTER



PROJECT UPDATE:

- SURVEY COMPLETED
- FOUR CHARRETTE SESSIONS
- SCHEMATIC DESIGN COMPLETE
- DESIGN DEVELOPMENT PHASE
- INDIVIDUAL SPACE PROGRAM



GLEN SPECK ACADEMY OF ARTS

PRIORITY A

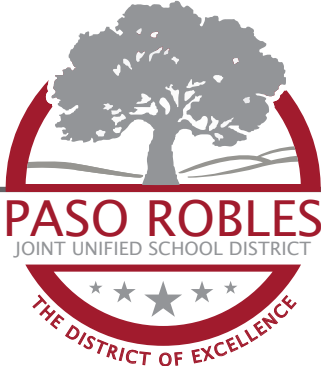


PROJECT UPDATE:

- SURVEY COMPLETED
- THREE CHARRETTE SESSIONS
- SCHEMATIC DESIGN REVIEW
- EXTERIOR AESTHETICS DESIGN
- INDIVIDUAL SPACE PROGRAM

GLEN SPECK ACADEMY OF ARTS

PRIORITY A+B

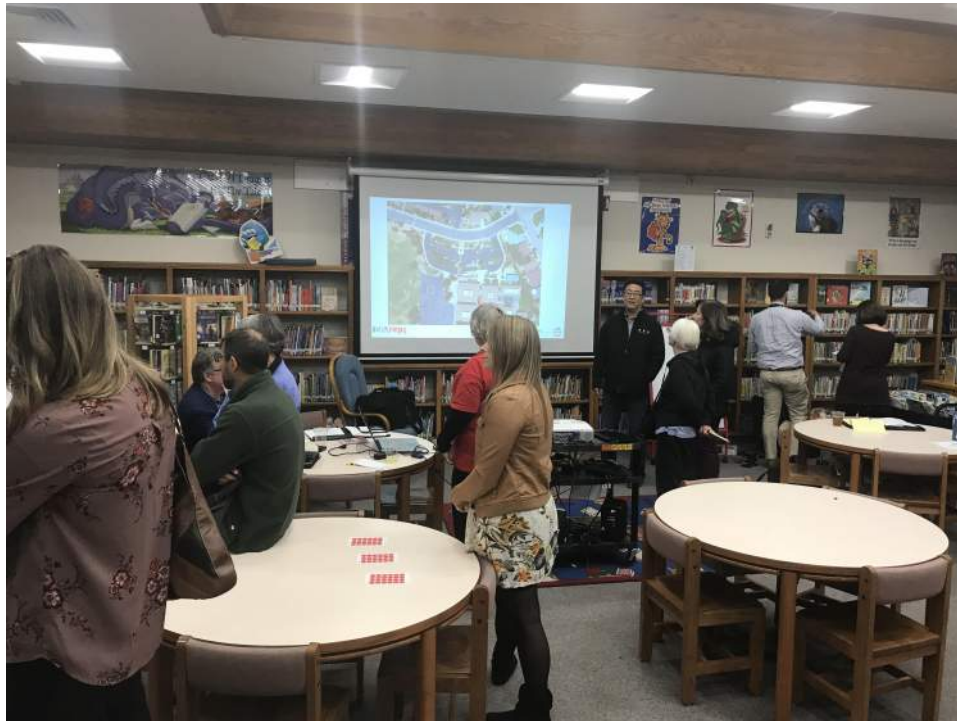


PROJECT UPDATE:

- SURVEY COMPLETED
- THREE CHARRETTE SESSIONS
- SCHEMATIC DESIGN REVIEW
- EXTERIOR AESTHETICS DESIGN
- INDIVIDUAL SPACE PROGRAM

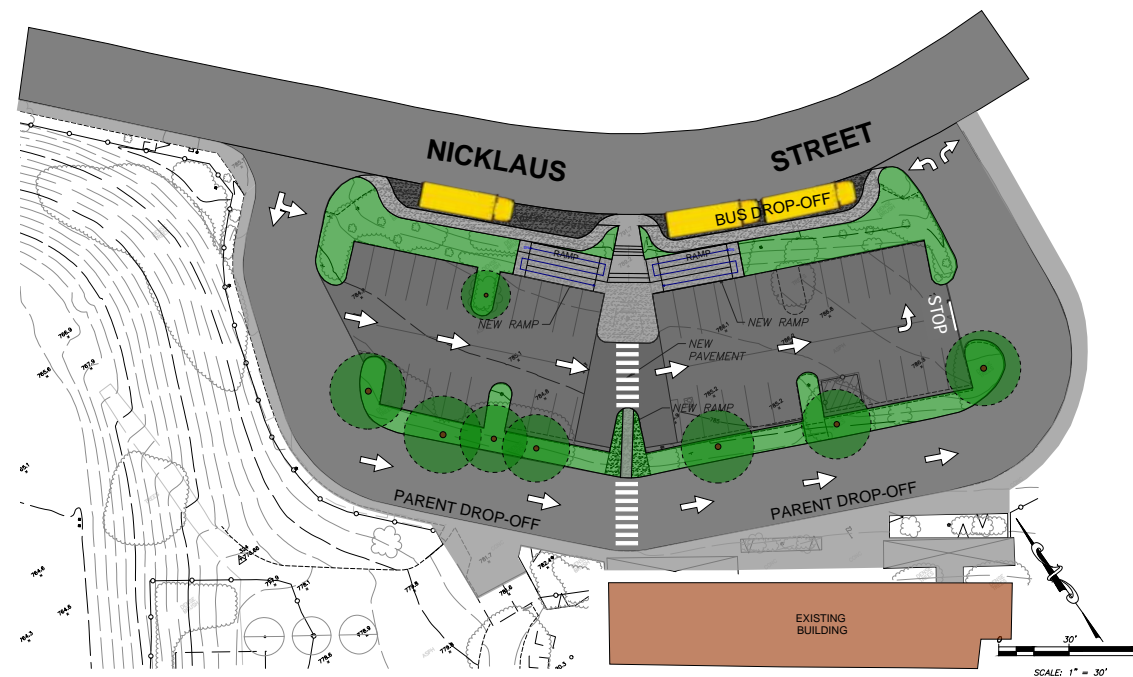
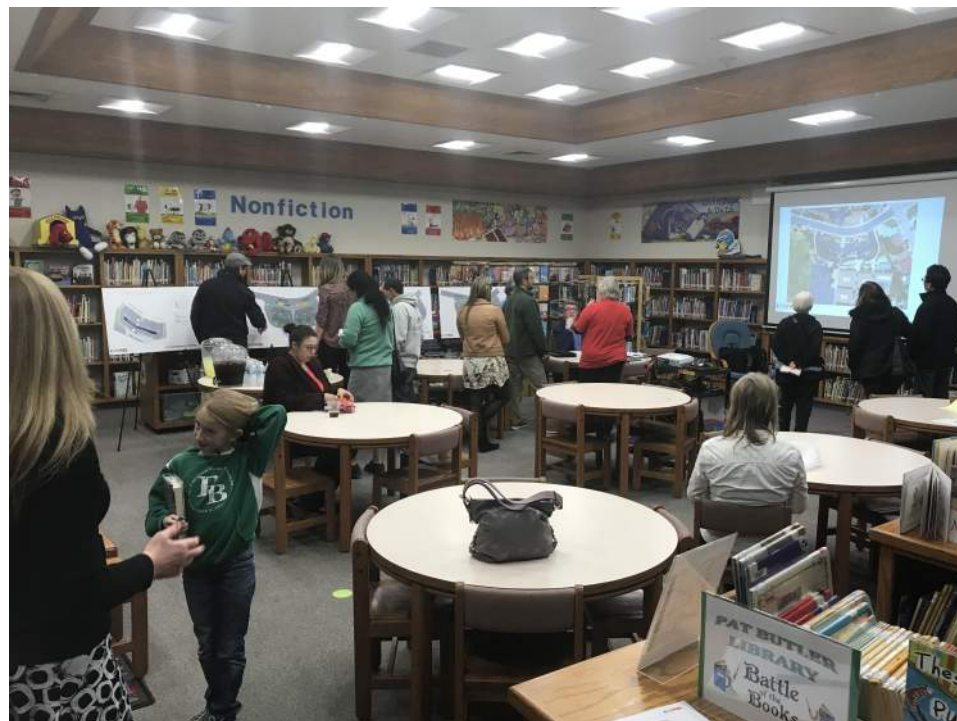


PAT BUTLER ELEMENTARY

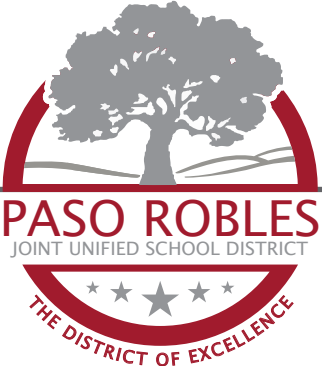


PROJECT UPDATE:

- SURVEY COMPLETED
- COMMUNITY OUTREACH FOR PARKING LOT IMPROVEMENTS



PASO ROBLES AQUATIC COMPLEX



PASO ROBLES AQUATIC COMPLEX

801 NIBLICK RD., PASO ROBLES, CA 93446



SCOPE OF WORK

NEW AQUATIC COMPLEX FOR PASO ROBLES JOINT UNIFIED SCHOOL DISTRICT COMPRISED OF A 50M COMPETITION POOL WITH A DIVING WELL, A 25M WARM-UP POOL WITH APPROACH STEPS, AND SUPPORT FACILITIES. SUPPORT FACILITIES INCLUDE A CONCESSION, ADMINISTRATION, PUBLIC RESTROOM BUILDING, CHANGING ROOM, LOCKER BUILDING, AND A POOL EQUIPMENT BUILDING. RESTROOM BUILDING COMPRISED OF 1 CLASSROOM, ADMINISTRATION OFFICE WITH STAFF LOCKERS AND A CONCESSION STAND WITH STORAGE, A CHANGING ROOM BUILDING, AND A POOL EQUIPMENT BUILDING WITH 2 SEPARATE STORAGE ROOMS, ALUMINUM BLEACHERS FOR SPECTATOR SEATING WITH SHADE STRUCTURE AND A COACHES GRANDSTAND.

PROJECT IS DIVIDED INTO BASE BID AND ADD ALTERNATES 1 AND 2.

BASE BID SCOPE

- CHANGING BUILDING
- PUBLIC RESTROOM BUILDING
- POOL EQUIPMENT BUILDING
- ALUMINUM BLEACHERS
- COACHES GRANDSTAND

ALTERNATE 1

- ADMINISTRATION OFFICE, STAFF LOCKERS
- CLASSROOM
- CONCESSION WITH STORAGE

ALTERNATE 2

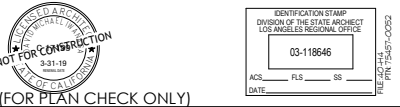
- SPECTATOR SEATING SHADE STRUCTURE

PROJECT DIRECTORY

OWNER/ REPRESENTATIVE	PASO ROBLES JOINT UNIFIED SCHOOL DISTRICT 800 NIBLICK ROAD, PASO ROBLES, CA 93446 P: 805.768.1100 CHERYL MOLLAN cmollan@pasorobles.org
CIVIL	ALAN HOK ENGINEERING 1751 N. PALM AVENUE, STE. 101 FRESNO, CA 93711 P: 559.432.6819 F: 559.432.6897 ALAN HOK alan@alanhokengineering.com
ARCHITECT	SIMPRK 1751 N. PALM AVENUE, SUITE 101 FRESNO, CALIFORNIA 93711 P: 559.448.8400 F: 559.448.8467 DAVID WANAGSA dw@simprk.com
STRUCTURAL ENGINEER	BROOKS RANSON & ASSOCIATES 1415 N. PALM AVE., SUITE 100 FRESNO, CA 93711 P: 559.448.8444 F: 559.448.8404 ART LOPEZ art@brooksranson.com
PLUMBING / MECHANICAL ENGINEER	SC ENGINEERING 100 MARSH STREET, SAN LUIS OBISPO, CALIFORNIA 93062 P: 805.540.3363 BRIAN STARKETT brian@sc-engineers.com
ELECTRICAL ENGINEER	POWERCO ENGINEERING P.O. BOX 2502 SEASIDE, CA 92552 P: 951.939.1111 www.powercoengineering.com
LANDSCAPE	ROBERT BORD & ASSOCIATES P: 559.448.8400 RICH VALLANIGAS rich@robertbord.net
AQUATICS	KEN MOELLER 1500 DISTRIBUTION WAY, SUITE 11 VISTA, CA 92081 P: 760.734.1800 C: 760.829.1560

BUILDING DATA / CODE ANALYSIS

USAGE / OCCUPANCY CLASSIFICATION:	E / B / S / A-5
STORIES:	1 STORY
FIRE PROTECTION / SPRINKLERS:	FULLY SPRINKLERED AS PER CBC 2016 903.3.11
CONSTRUCTION TYPE:	2-A
FIRST FLOOR LOAD:	500 OCCUPANTS
SQUARE FOOTAGE:	8,141 S.F.



SUB TITLE	
No.	DATE
DESCRIPTION	
PROJECT ARCHITECT	
PROJECT NUMBER	
DESIGN BY	
SCALE	
D.S./C.S.	
DESIGNED BY	
DATE	

COVER SHEET

AT.0

PASO ROBLES JOINT UNIFIED SCHOOL DISTRICT - BOARD MEMBERS

Joan Summers, Joel Peterson, Chris Bausch Tim Gearhart Field Gibson Dr. Kathleen Hall Matt McClish	Board President Board Clerk Board Trustee Board Trustee Board Trustee Board Trustee Board Trustee
--	---

PASO ROBLES JOINT UNIFIED SCHOOL DISTRICT - ADMINISTRATION

Chris Williams Duane Wolgamott Laura Becker Hugo Bastidos Kelly Jenal-Stainbrook Cheryl Mollan	District Superintendent Chief Business Office Director of Fiscal Services Director of Maintenance, Operations and Transportation Transportation Supervisor Manager of Facilities & Planning
---	--

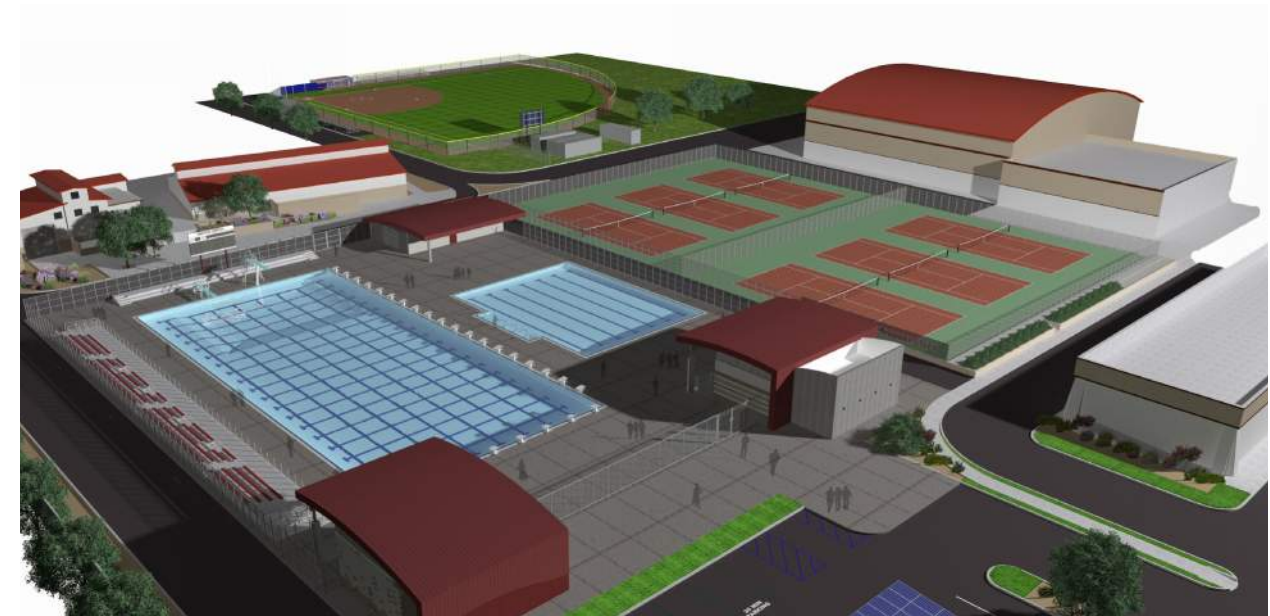
PROJECT UPDATE:

- PROJECT WAS SUBMITTED TO DSA
- UNDER DSA REVIEW
- COMMUNITY IN-KIND DONATIONS
- SITE DEMOLITION



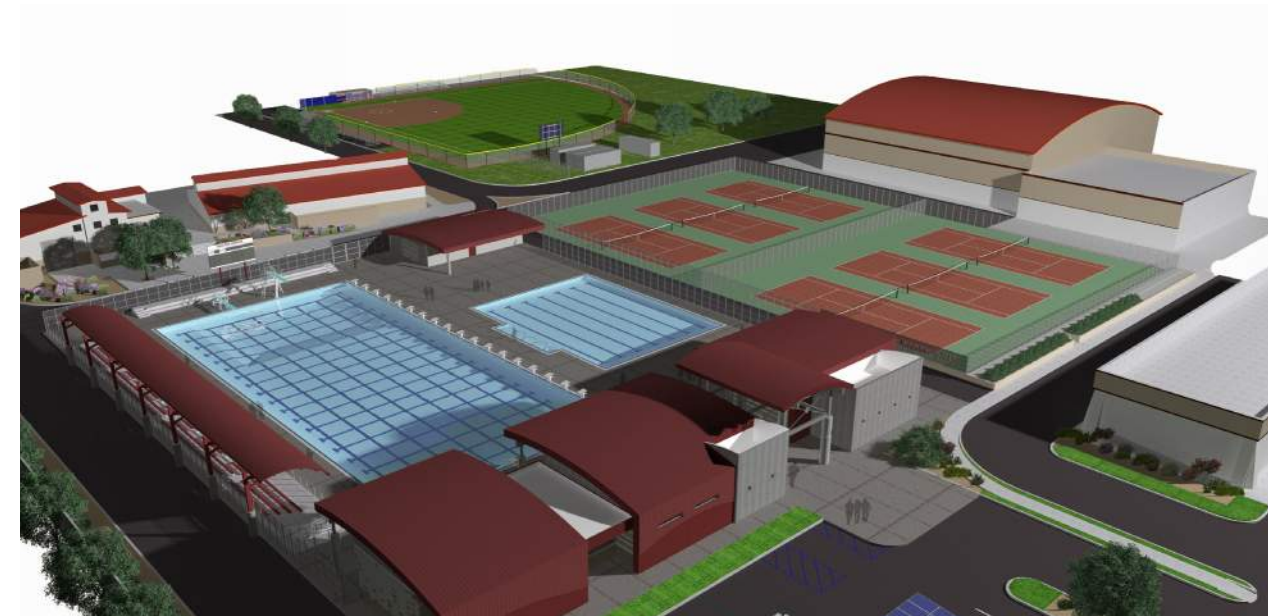
PASO ROBLES AQUATIC COMPLEX

PHASE I



PASO ROBLES AQUATIC COMPLEX

PHASE II - PENDING FUNDING



PASO ROBLES BOND UPDATE

NEXT STEPS



PRELIMINARY DESIGN INVESTIGATION:

- PAT BUTLER ELEMENTARY SCHOOL
- GEORGIA BROWN ELEMENTARY SCHOOL

DESIGN DEVELOPMENT:

- MARIE BAUER EARLY CHILDHOOD
- GLENS SPECK ACADEMY OF ARTS

CONSTRUCTION DOCUMENTS:

- GEORGE H. FLAMSON MIDDLE SCHOOL TEMPORARY CAMPUS
- GEORGE H. FLAMSON MIDDLE SCHOOL CLASSROOM ADDITION

DSA REVIEW:

- PASO ROBLES AQUATIC COMPLEX

THANK YOU



sim-pbk.com