

LPA

La Cañada Unified School District ES Fence Improvements Plan

Site Plan Review
August 28, 2018

guiding principles

The LCUSD Facilities Master Plan will...

Serve the Students First

- Positively affect every student and every site by making our schools 21st Century learning centers.

Enhance Safe and Secure Schools

- Improve student and staff safety while maintaining a welcoming presence to the community.

Inspire and Achieve Tangible Results

- Balance the larger aspirational vision for educating students with the practical and functional needs of each site.

Promote Flexibility

- Create learning environments and spaces able to evolve and grow with change.

Be Financially & Environmentally Responsible

- Invest with purpose and responsibility as good fiscal stewards of community dollars.

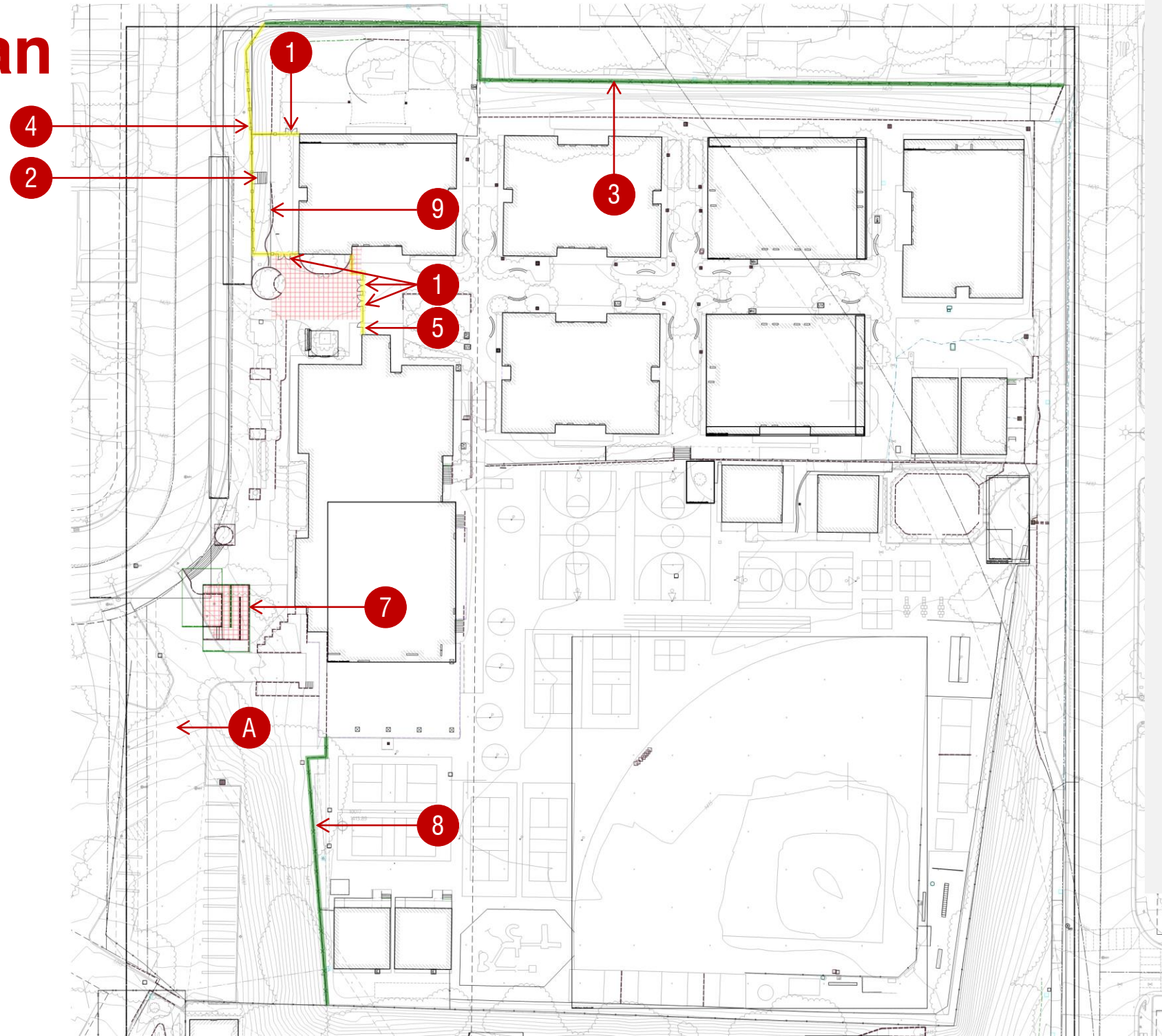
Honor Stakeholder Engagement

- Create a thoughtful, intentional plan based on input from community members, students, teachers and staff.



LA CANADA ELEMENTRY SCHOOL

site plan



Legend:

- 1 Install 6' Ht. 8' Wide Double Tube Steel Gate
- 2 Remove Existing Stairs
- 3 Replace 8' Ht. Chain Link Fence
- 4 Install 6' Ht. Tube Steel Fence
- 5 Install 3' Wide Electrically Controlled Gate
- 6 Replace Concrete As Required For ADA Path Of Travel
- 7 Demolish Existing Ramp and Provide New Accessible Ramp
- 8 Replace 8' Ht. Chain Link Mesh (Sand/Prime/Paint Posts)
- 9 Preserve Existing Seat Wall & Paving
- A Additional analysis & Survey Information required for assessment of path of travel from parking lot.

site improvements



Replace Chain Link Mesh



Remove Wall, Adjust Grades, Install Tube Steel Fence & Gate



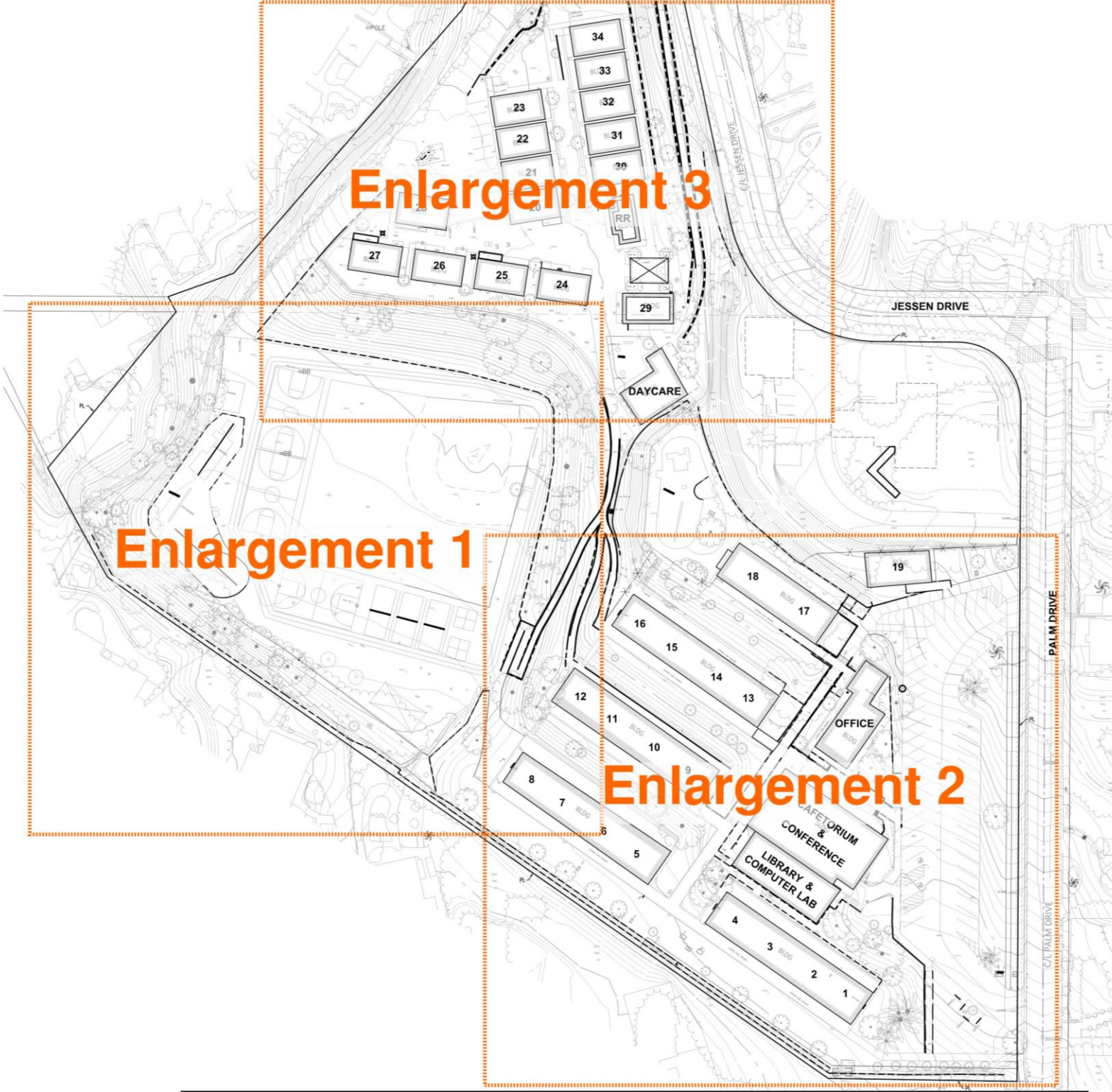
Install Tube Steel Access Gate & Fencing.



Install Tube Steel Access Gate & Fencing.

PALM CREST ELEMENTARY SCHOOL

site plan



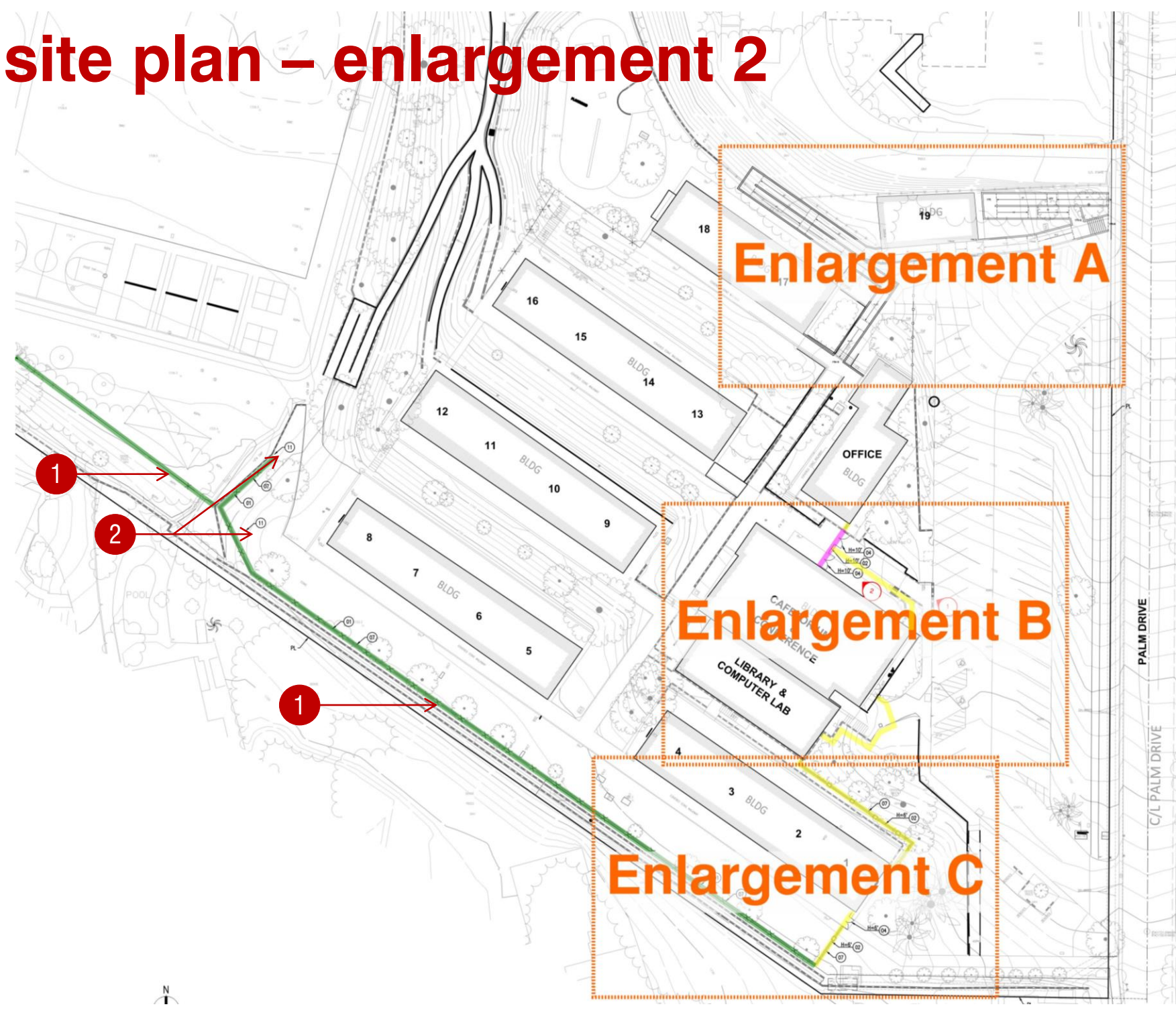
site plan – enlargement 1



Legend:

- 1 Install 8'-0" Chain Link Fence (Non-climbable – 1" mesh)
- 2 Install 8'-0" Chain Link Single Gate w/ locking hardware
- 3 Install Chain Link Double Gate w/ Locking hardware
- 4 Construct 24"x24" Grate Inlet

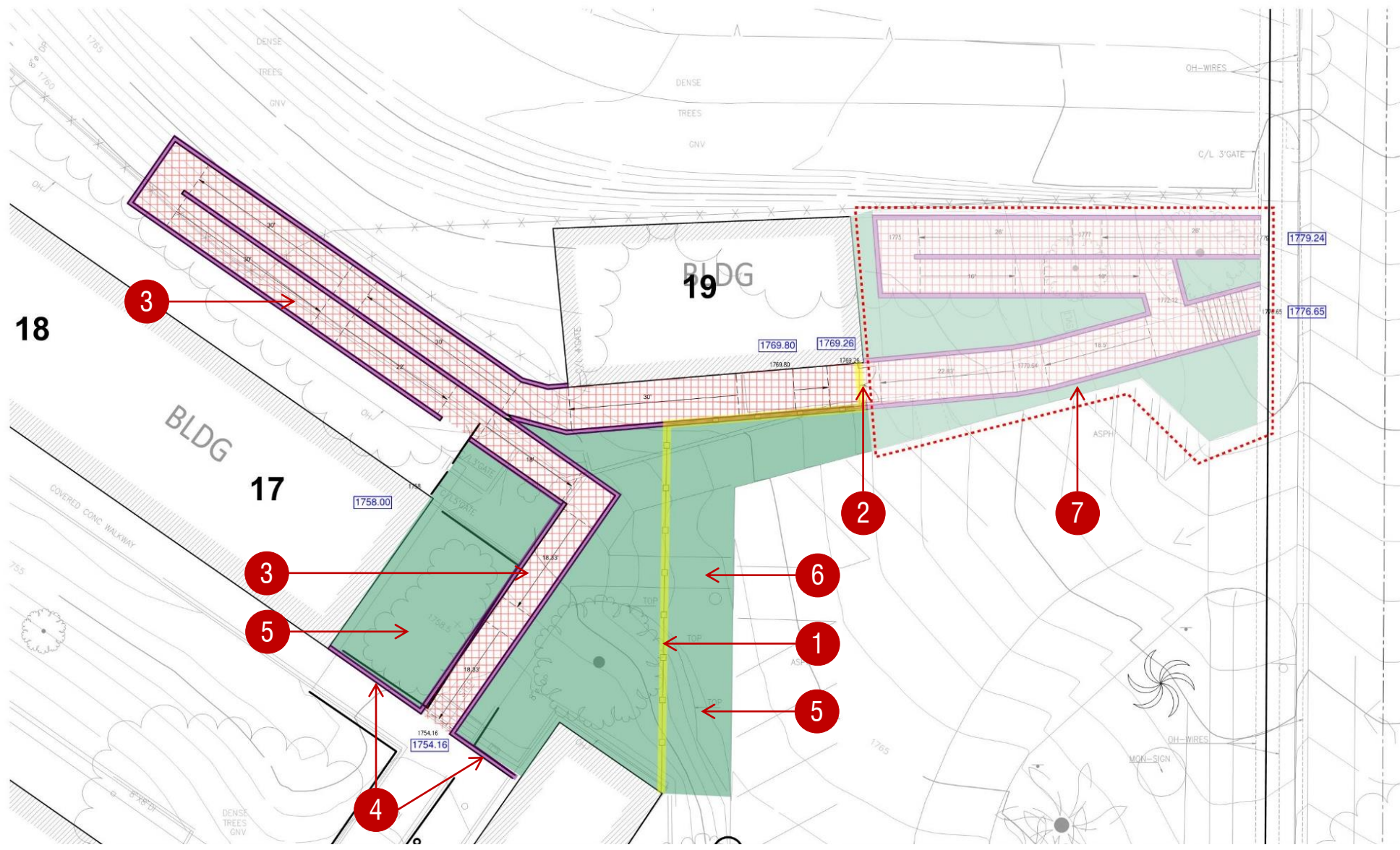
site plan – enlargement 2



Legend:

- 1 Install 8'-0" Chain Link Fence (Non-climbable – 1" mesh)
- 2 Construct 24"x24" Grate Inlet

site plan – enlargement 2-A

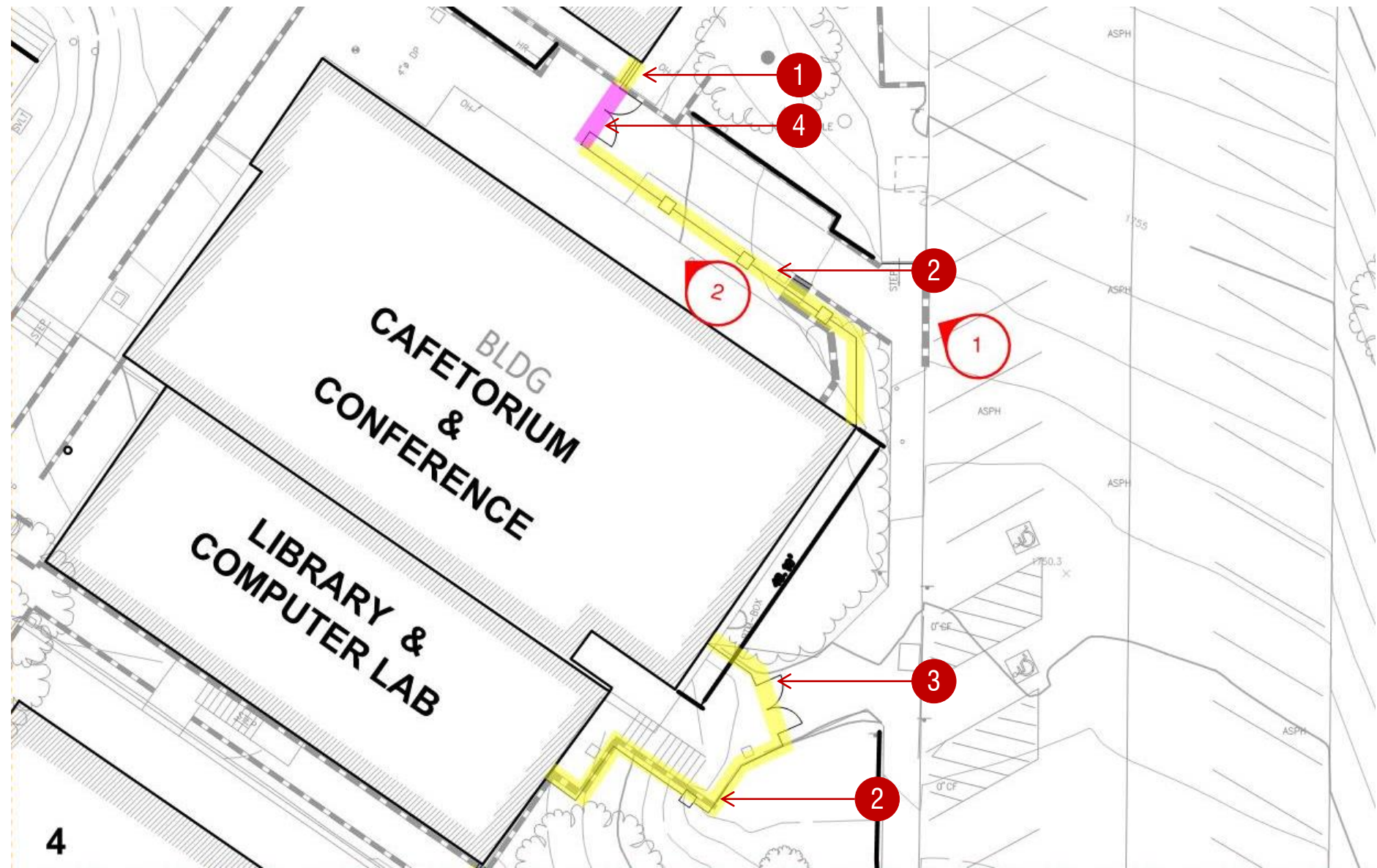


Legend:

- 1 Install Tube Steel Fence 6' Height
- 2 Install Tube Steel Double Gate
- 3 Construct Accessible Ramp w/ Retaining Walls & Handrail
- 4 Construct Retaining Wall
- 5 Restored Planting Area
- 6 Removed Concrete Walk & Stair
- 7 Accessible ramp and stair option connecting Public Right of Way to Classroom 19

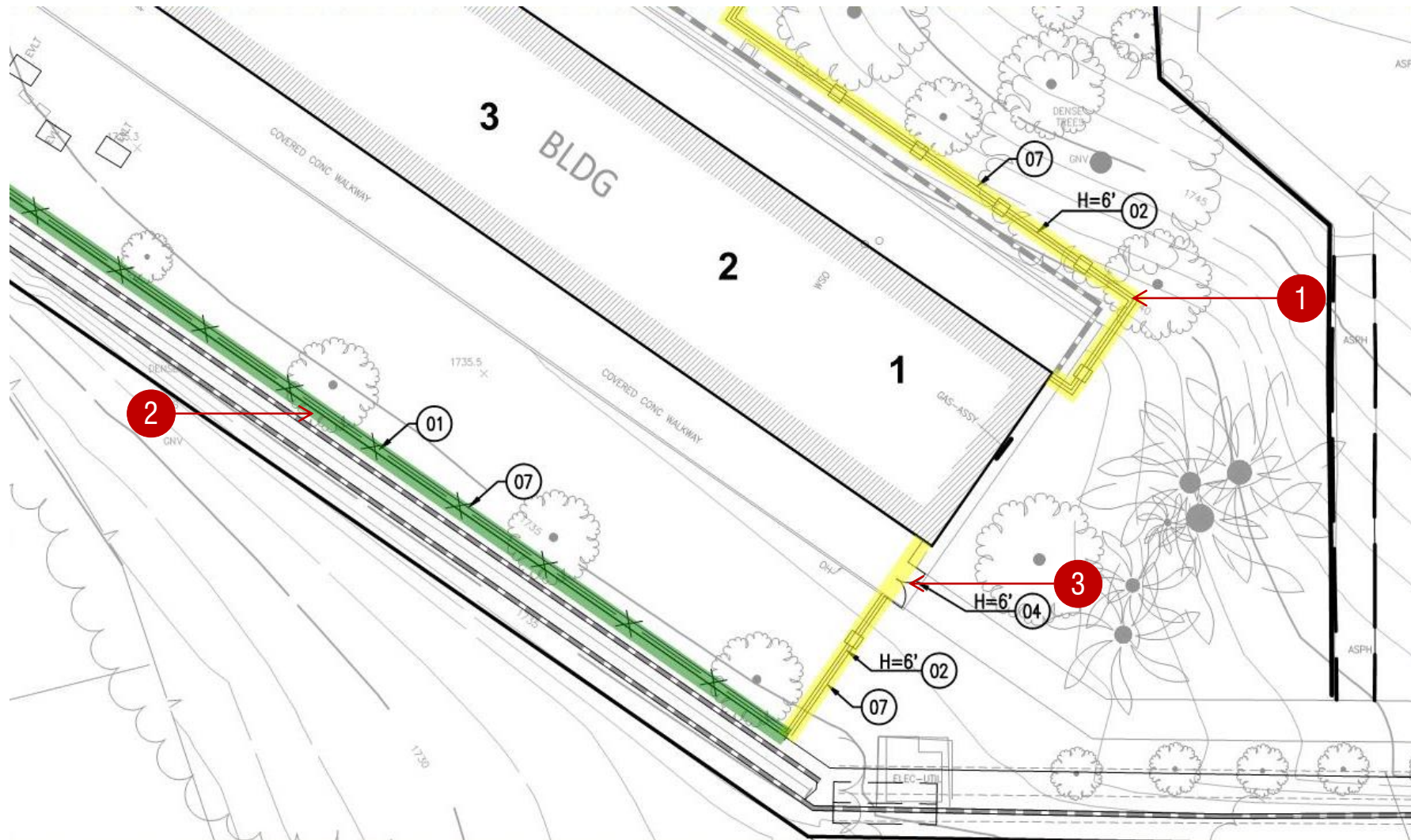


site plan – enlargement 2-B



- Legend:**
- 1 Install Tube Steel Fence 6' Height
 - 2 Install Tube Steel Fence 10' Height
 - 3 Install Tube Steel Single Gate
 - 4 Install Tube Steel Double Gate

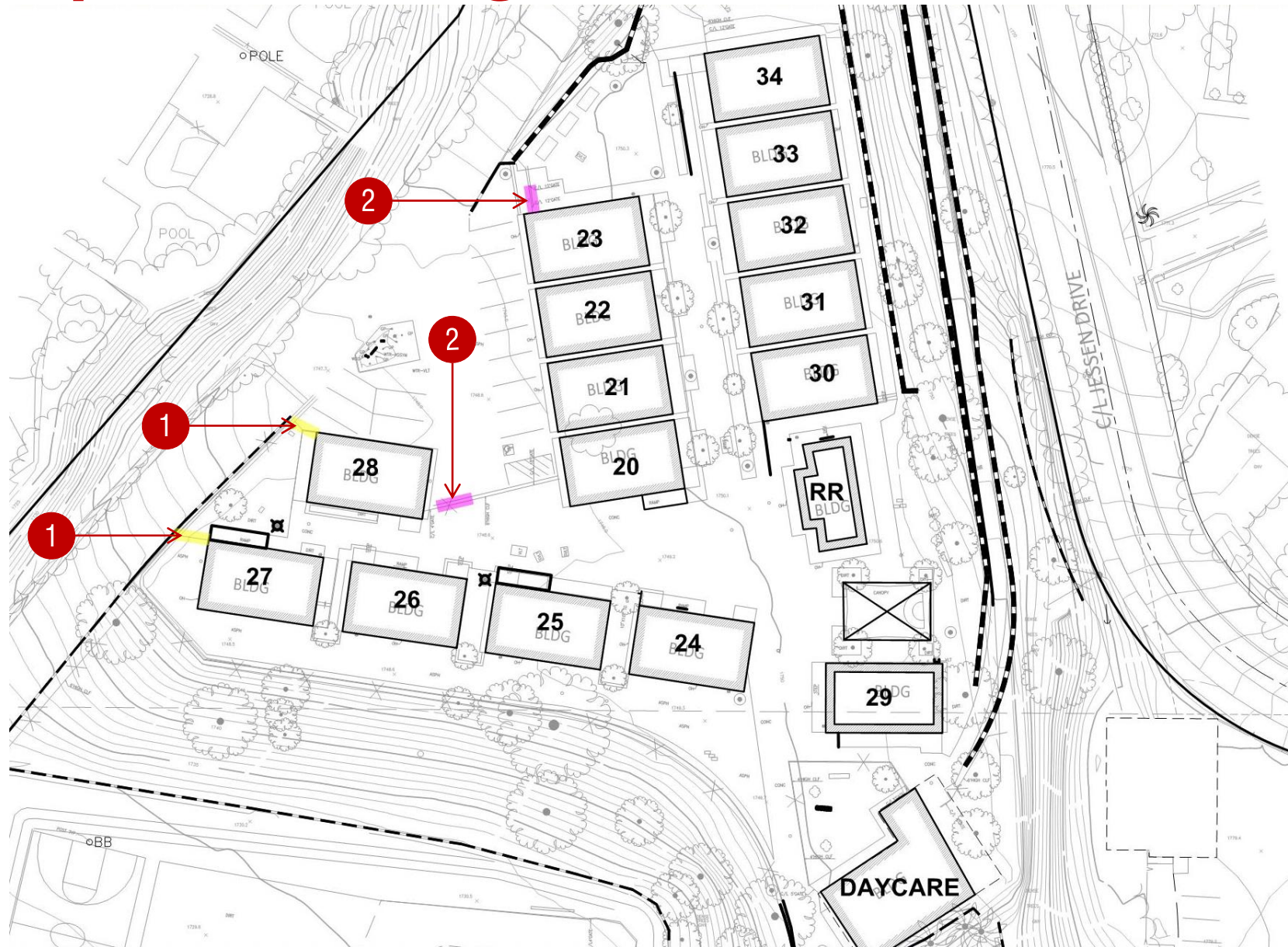
site plan – enlargement 2-C



Legend:

- 1 Install Tube Steel Fence 6' Height
- 2 Install 8'-0" Chain Link Fence (Non-climbable – 1" mesh)
- 3 Install Tube Steel Double Gate

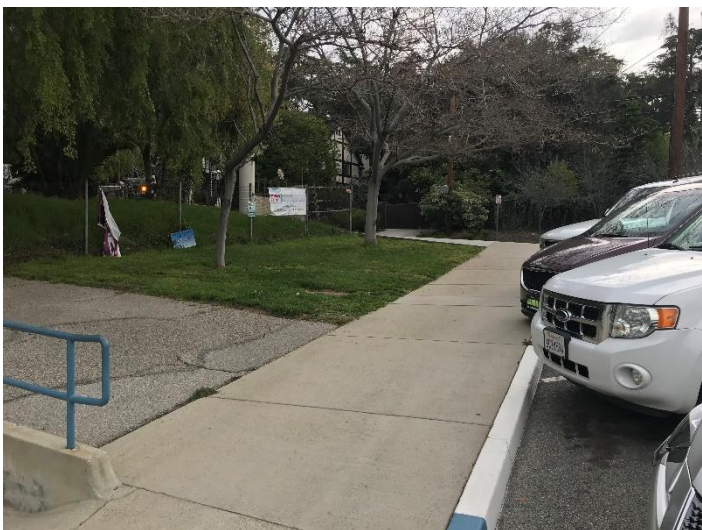
site plan – enlargement 3



Legend:

- 1 Add Chain Link Fence Panel to close off area
- 2 Replace Pedestrian Gate to make self-closing

site improvements



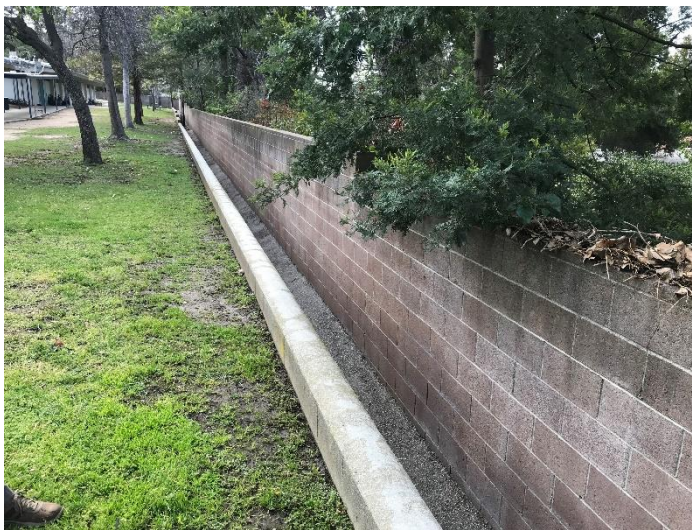
Install Tube Steel Access Gate And Fencing; Grading And Retaining Walls For Accessible Path Of Travel.



Install Tube Steel Access Gate And Fencing; Grading And Retaining Walls For Accessible Path Of Travel.



Install Tube Steel Access Gate And Fencing Property Line Wall To End Of Building.



Install Chain Link Fencing In Front Of Low Wall.



Install Tube Steel Access Gate And Fencing; Grading For Accessible Path Of Travel.



Install Tube Steel Access Gate And Fencing; Replace Portion Of Tube Railing.



Install Tube Steel Access Gate And Fencing; Grading For Accessible Path Of Travel.

site – perspectives



2 Perspective

Legend:

- 1 Tube Steel Fence Panel
- 2 2' Signage Panel
- 3 6' Height Tube Steel Fence
- 4 Double 4' Wide Gates @ 8' Height
- 5 Demolish Existing Pipe Rail/Guardrail
- 6 4' Height Shrub As Barrier

site – perspectives

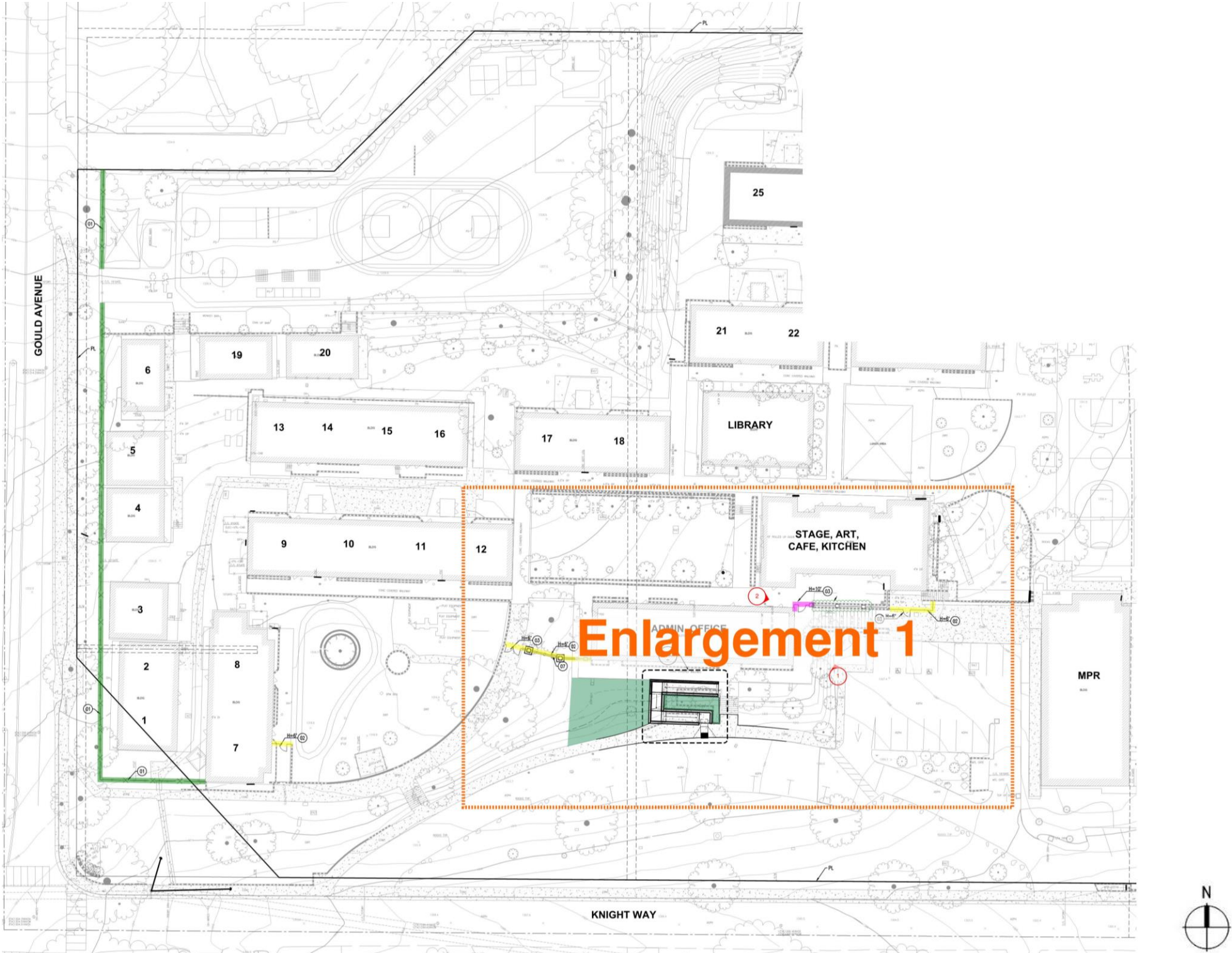


1 Perspective

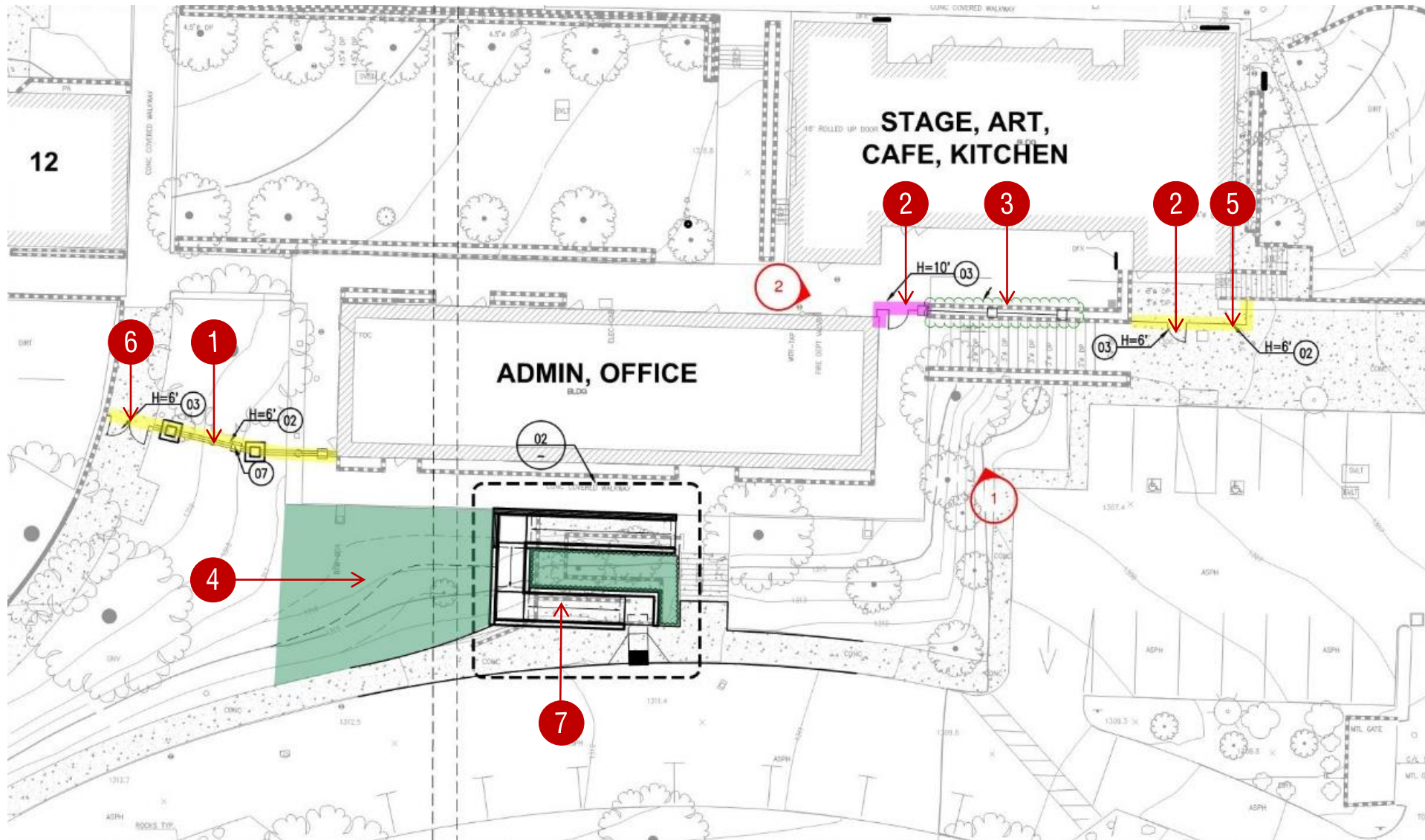
- Legend:
- 1 Signage opportunity

PARADISE CANYON ELEMENTARY SCHOOL

site plan

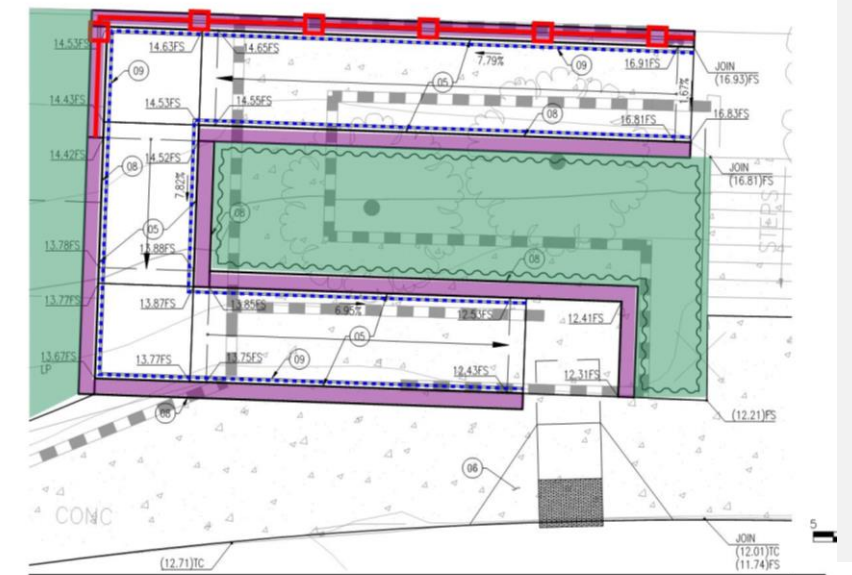


site plan – enlargement 1



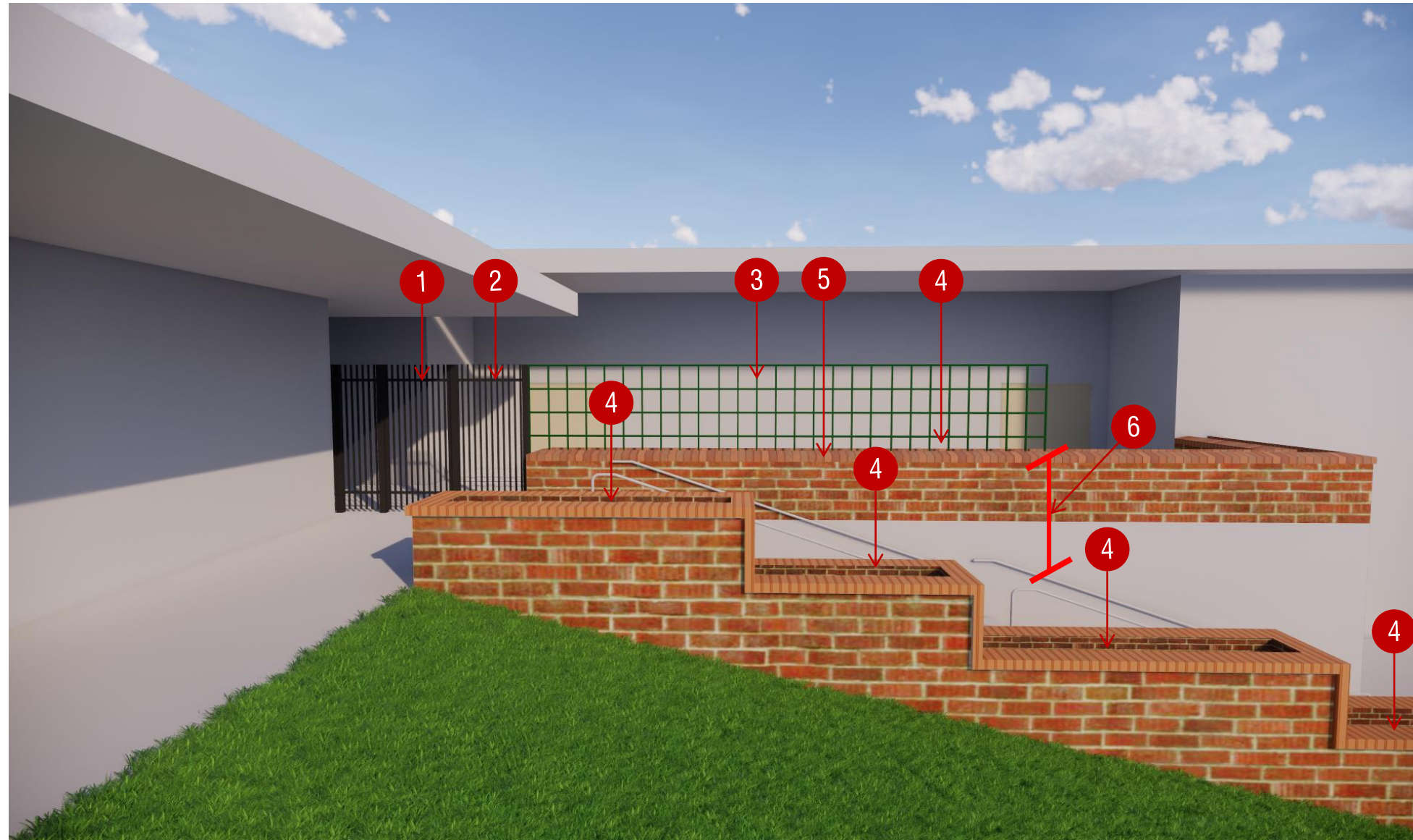
Legend:

- 1 Install Tube Steel Fence 6' Height With 2' Brick Pilasters
- 2 Install Tube Steel Single Gate
- 3 Install 4'-0" Height Greenscreen
- 4 Restored Planting Area
- 5 Install Tube Steel Fence 6' Height
- 6 Install Tube Steel Double Gates
- 7 Reconstruct ADA Ramp & Curb Ramp



GRADING ENLARGEMENT	02
---------------------	----

site – perspectives



Legend:

- 1 Install 8' Ht. Tube Steel Single Gate
- 2 Install Tube Steel Fence 8' Height
- 3 Install 4'-0" Height Greenscreen
- 4 Restored Planting Area
- 5 Reset Top Course of Brick to eliminate Ledge
- 6 6'-0" Height

1 Perspective

site – perspectives



2

Perspective

site improvements



Install Tube Steel Egress Gate And Fencing From Retaining Wall To Exterior Stairway.



Install Tube Steel Access Gate And Fencing From Planter To Building.



Install Tube Steel Access Gate And Fencing From Building To Kindergarten Perimeter Wall.



Install Tube Steel Access Gate And Fence From End Of Kindergarten Wall To Face Of Building.



Install Tube Steel Access Gate And Fencing Along Planter To Building.



Ramp Modification For Ada Path Of Travel.



Install Taller Chain Link Fencing Along Perimeter.



Replace Chain Link Mesh.

tube steel gate/fencing options



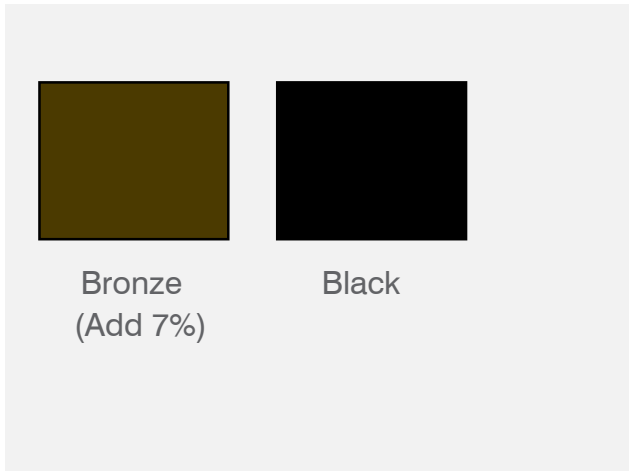
Tube Steel Fence- 2 Rail



Tube Steel Fence- 2 Rail



Tube Steel Gate- 2 Rail



Color Options



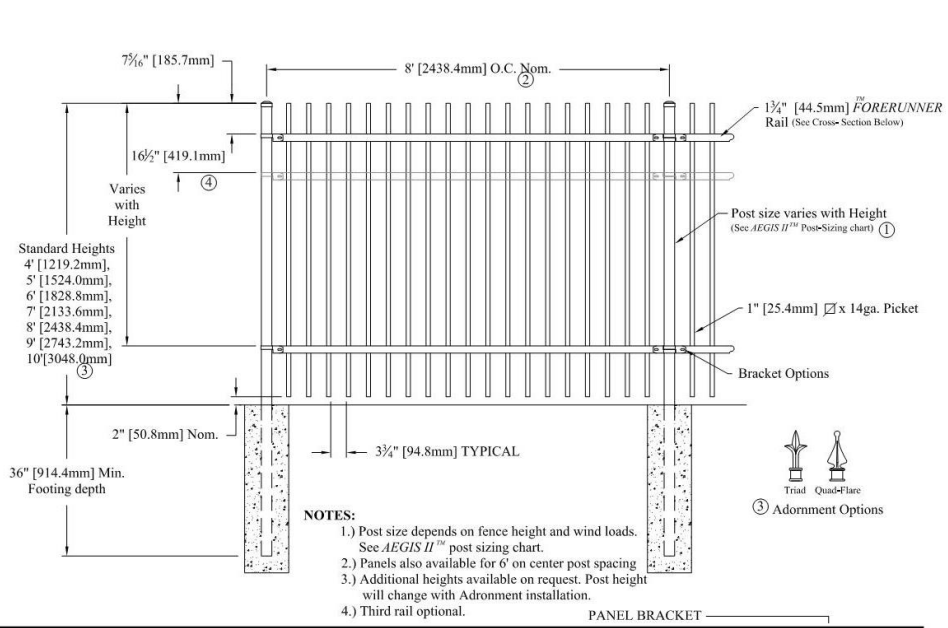
Tube Steel Fence- 3 Rail



Tube Steel Fence- 3 Rail



Tube Steel Gate- 3 Rail



Typical Tube Steel Panel

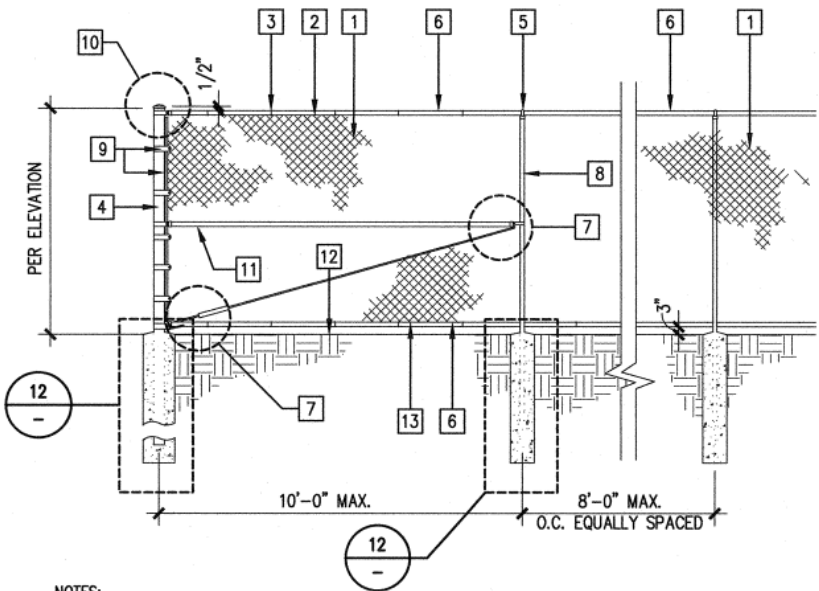
chain link fencing options



Chain Link Fence 2" Mesh



Chain Link Fence 1" Mesh



NOTES:
A. SUBMIT SHOP DRAWINGS TO LANDSCAPE ARCHITECT FOR REVIEW.
B. ALL FENCING & COMPONENTS TO BE HOT DIPPED GALVANIZED STEEL.
C. ALL WELDS TO BE GROUND SMOOTH.

- 1 2" - 9 GAUGE CHAINLINK FENCE PER MATERIALS PLAN. REFER TO KEYNOTE LEGEND FOR FINISH
- 2 TOP SELVAGE KNUCKLED CHAIN LINK FABRIC
- 3 RAIL TIE WIRE. ATTACH TO TOP RAIL SINGLE WRAP 9 GAUGE @ 24" O.C. (NOTE: CHAINLINK TO BE ATTACHED BELOW TOP RAIL)
- 4 CORNER OR END POST. REFER TO CAISSON SCHEDULE POST SIZE AT SPECIFIC LOCATIONS
- 5 LINE POST TOP
- 6 1.66 " O.D. SCH. 40 TOP & BOTTOM RAIL
- 7 ADJUSTABLE TRUSS ROD W/TURNBUCKLE
- 8 LINE POST. REFER TO CAISSON SCHEDULE POST SIZE AT SPECIFIC LOCATIONS
- 9 TENSION FLAT BAR. THREAD TENSION BAR TO CHAINLINK & ATTACH TO END POST W/TENSION CLIPS PER MANUFACTURER RECOMMENDATIONS
- 10 END POST CAP TO MATCH END POST
- 11 1.66 " O.D. SCH.40 INTERMEDIATE RAIL @ ENDS, CORNER MODULES & CHANGE OF DIRECTIONS
- 12 FINISH GRADE
- 13 BOTTOM KNUCKLED CHAINLINK FABRIC

The logo for LPA is centered within a white square. It consists of the letters 'LPA' in a bold, red, serif typeface. The letter 'A' is unique, featuring a red dot above it and a red diagonal line that descends from the top of the letter and crosses the dot.

LPA



creating sustainable places and spaces that enrich the lives of those who use them