

# Local Control Accountability Plan Federal Addendum

Gilroy Unified School District

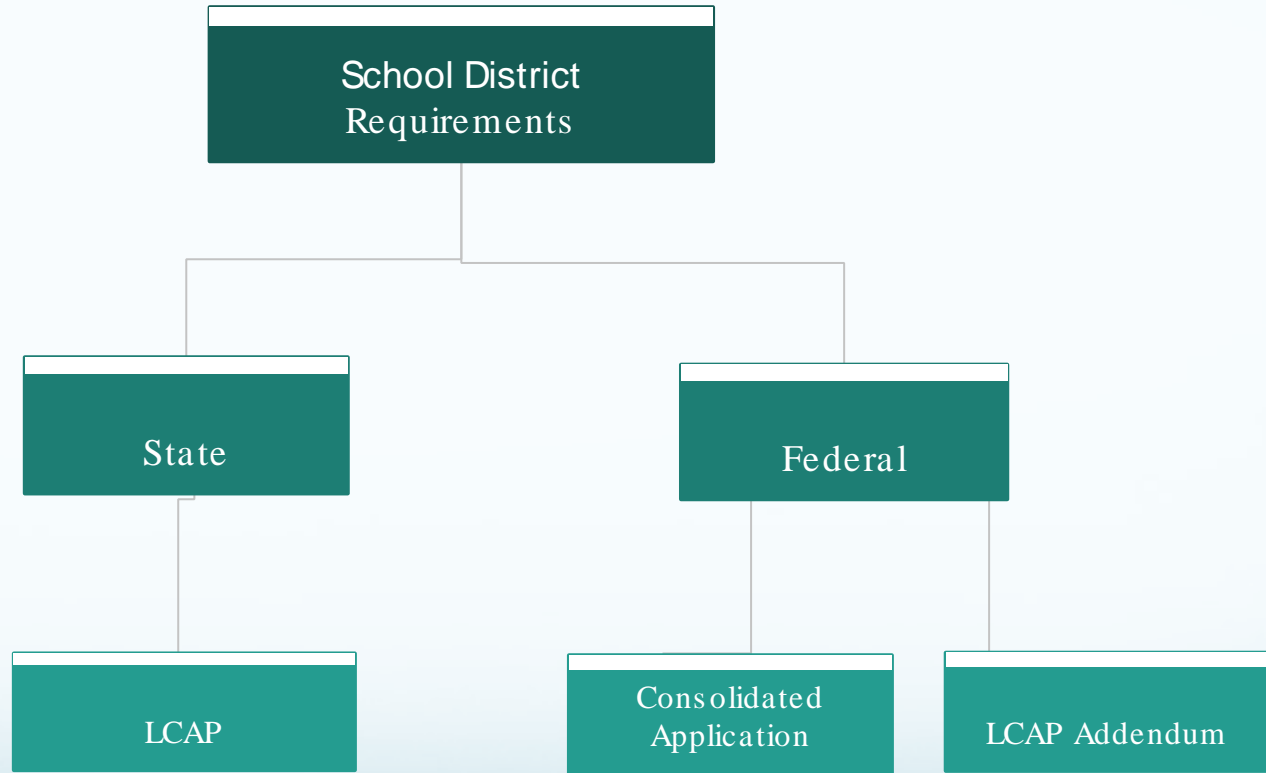
May 2019

# LCAP and LCAP Addendum

- LCAP is a state plan that meets the Local Control Funding Formula (LCFF) requirements
- LCAP Federal Addendum in combination with the Consolidated Application (Con-App) meets the requirements for ESSA (Every Student Succeeds Act)
- Both are connected to funding sources

# Consolidated Application

- Districts apply for funding in the Consolidated Application Reporting System
- The application corresponds to the sections in the Federal Addendum



# LCAP Federal Addendum

- Describes the district's plan for use of federal funds
- Must be approved by local board (no public hearing)
- Completed LCAP Federal Addendum must be submitted to the California Department of Education (CDE) by July 1
- CDE program offices will review and approve

# Every Student Succeeds Act (ESSA) Programs within the Addendum

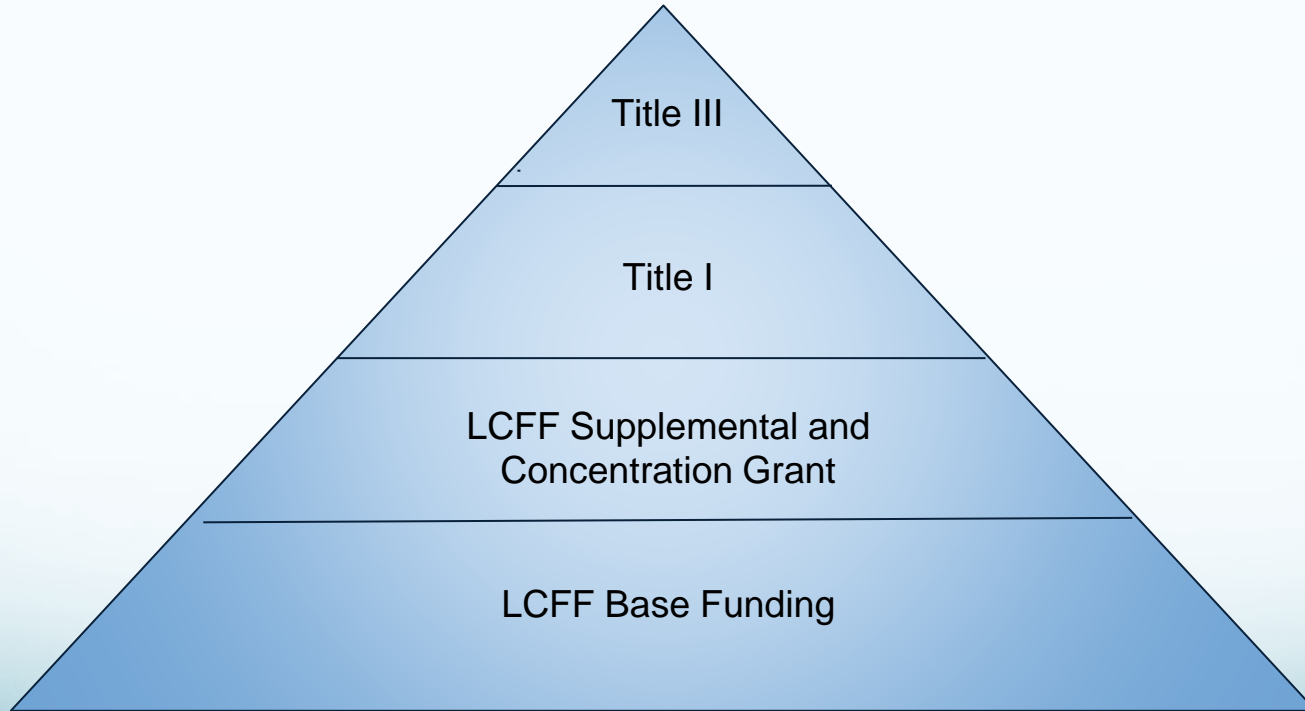
Title I, Part A - Improving basic programs operated by state and districts

Title II, Part A - Supporting effective instruction

Title III, Part A - Language instruction for English learners and immigrant students

Title IV, Part A - Student support and academic enrichment grants

# Supplement vs Supplant



# Title 1

- Educator equity
- Parent and family engagement
- Schoolwide programs
- Homeless children and youth services
- Student transitions



# Title II

## Improving teacher quality

- Professional growth and improvement
- Priorities for funding
- Data and consultation to support continuous improvement

# Title III

Funding to support English learners in addition to base services and LCFF supplemental and concentration

- Professional development
- Programs and activities
- English proficiency and academic achievement
- Enhanced instructional opportunities for immigrant youth

# Title IV

- Activities to support a well-rounded education
- Safe and healthy school students
- Effective use of technology