

AMENDMENT NO. 002

THIS AMENDMENT to AGREEMENT is made this **13th** day of **August** in the year **2019**, between **LPA, INC.** hereinafter referred to as "**ARCHITECT**", and the **LA CAÑADA UNIFIED SCHOOL DISTRICT**, hereinafter referred to as "**DISTRICT**".

WITNESSETH

1. The CONSULTANT and DISTRICT do mutually agree as follows:

To amend that certain AGREEMENT dated April 11, 2018, approved by the Board of Trustees of the La Cañada Unified School District on April 27, 2018 to provide architectural & engineering services for perimeter fencing at the elementary school sites. Amend the AGREEMENT to include the following:

The Architect to provide additional services to revise the design of the main gate at the main entrance of each of the school sites. By reference, this Amendment incorporates the request for Additional Services dated June 18, 2019 (Attachment A).

The Compensation Amount is increased from \$152,000 to \$167,300.

2. Except as amended herein, the terms and conditions of original AGREEMENT shall remain in full force and effect.

IN WITNESS WHEREOF, the DISTRICT and the ARCHITECT have executed this Amendment to the original Agreement.

LPA, INC.

LA CAÑADA UNIFIED SCHOOL DISTRICT

By_____

By_____

Name: _____

Name: _____



5161 California Avenue, Suite 100, Irvine, California 92617

p. 949.261.1001 f. 949.260.1190
w. lpainc.com e. lpa@lpainc.com

June 18, 2019

Mr. Harold Pierre
Program manager
LINIK CORP.
P.O. Box 803040
Santa Clarita, Ca. 91380-3040

Re: La Canada Unified School District
Additional Services Elementary School Fencing Projects, LPA Project No. 16111.40

Dear Harold,

The following fee proposal is for additional services associated with the design of the La Canada Elementary School fencing projects.

This Fee Proposal is broken out into the following two scope components:

I. Signage Design:

This Additional service is for the design and incorporation of signage/ Campus identity to each school site. The revisions include signage design, documentation and DSA processing. The design is as indicated on the attached fencing elevations for each site. Work includes landscape architecture, civil and structural engineering. Structural engineering includes footing re-design, calculations and documentations for processing as a Construction Change Directive (CCD) type A through DSA. Compensation for this effort is summarized below:

• Landscape Design, Drawings revisions:	\$ 8,100
• Civil Engineering revisions:	\$ 1,200
• Structural Engineering	<u>\$ 6,000</u>
Total:	\$15,300

II. Modifications to the Speech Room at LCE

LPA will provide a design and detail for a new desk/ cabinet in the Speech Room. Scope includes mounting details for the cabinet and new electrical power and data outlets serving this location. Since no installation details were part of the originally approved documents, this will require a CCD-A for review/ approval by DSA.

Compensation for interior and electrical design: **\$ 2,200**

Exclusions/ Assumptions:

- Signage design is based on the attached approved design and no further design/ review effort is included in this proposal.
- Cost estimating services are excluded

We appreciate the opportunity to continue to serve LCUSD, if you have any questions, please feel free to call myself or Mike Michalek.

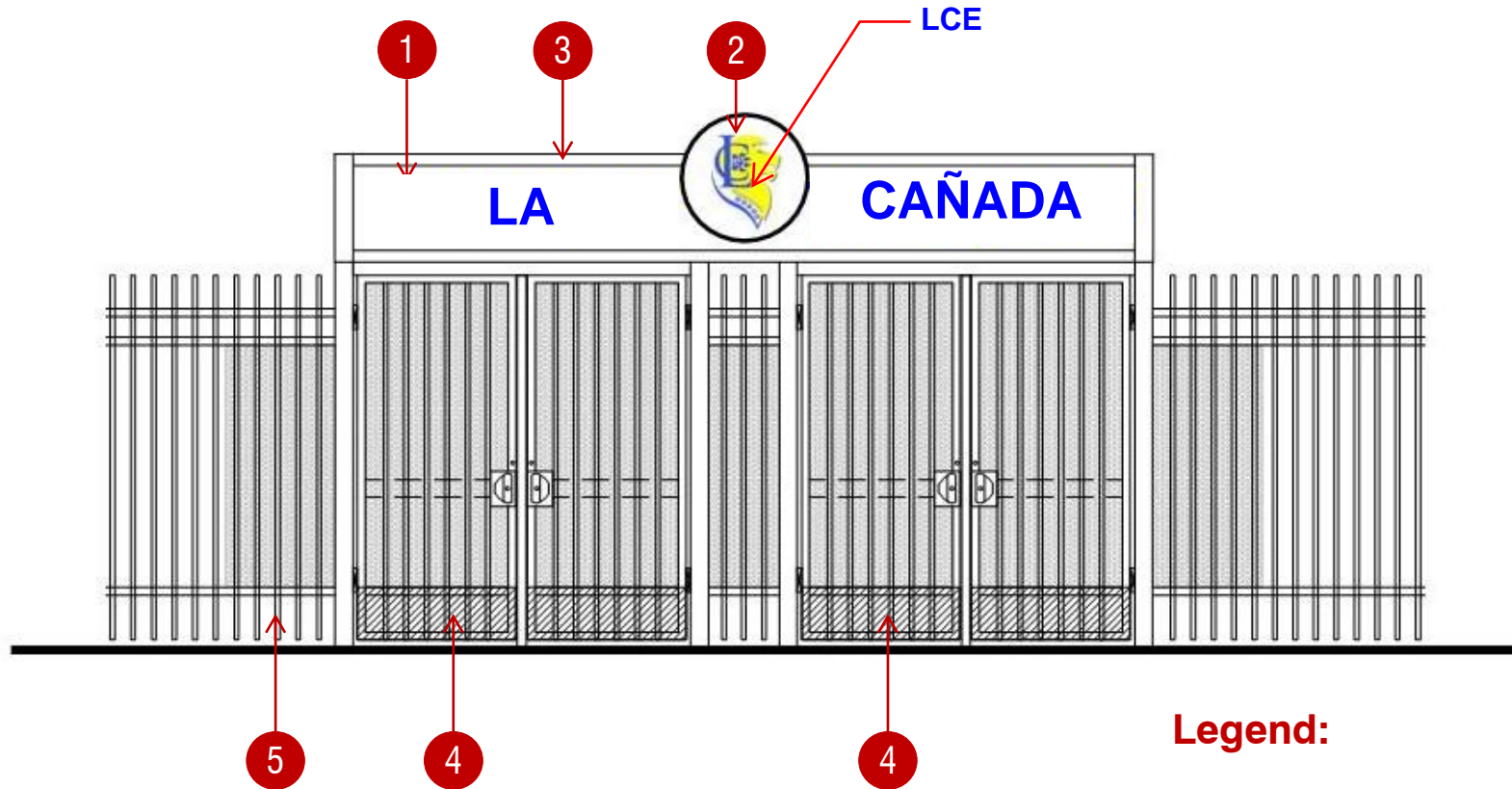
Sincerely,
LPA, Inc.

Rick Musto, AIA, LEED AP BD+C
Managing Director

cc: Mike Michalek

concept | inspiration

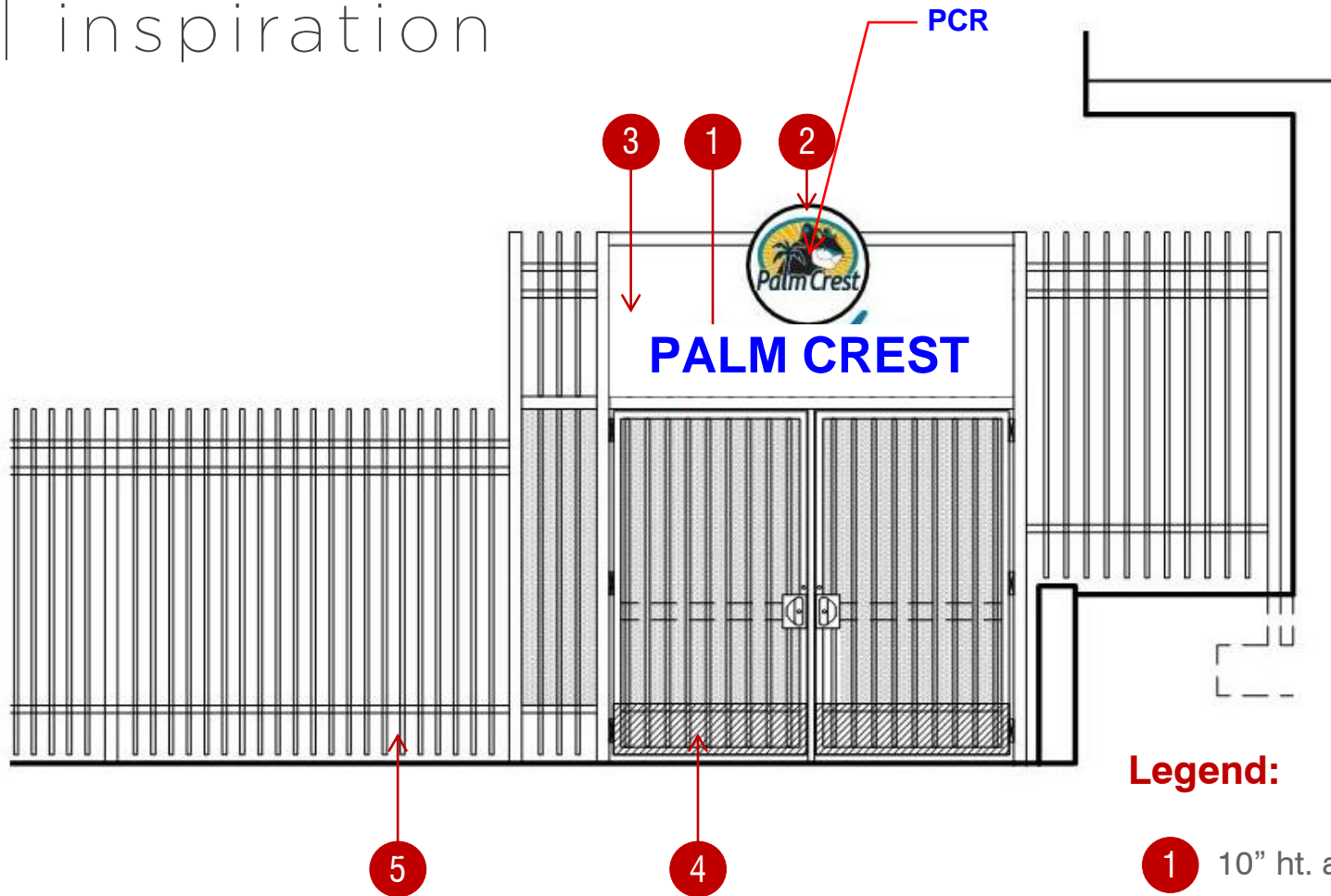
LPA



Legend:

- 1 10" ht. aluminum pinned lettering
- 2 School logo
- 3 2' high perforated panel w/ tube steel frame
- 4 New 7' high dual tube steel pedestrian gates
- 5 New 7' high tube steel fence

concept | inspiration

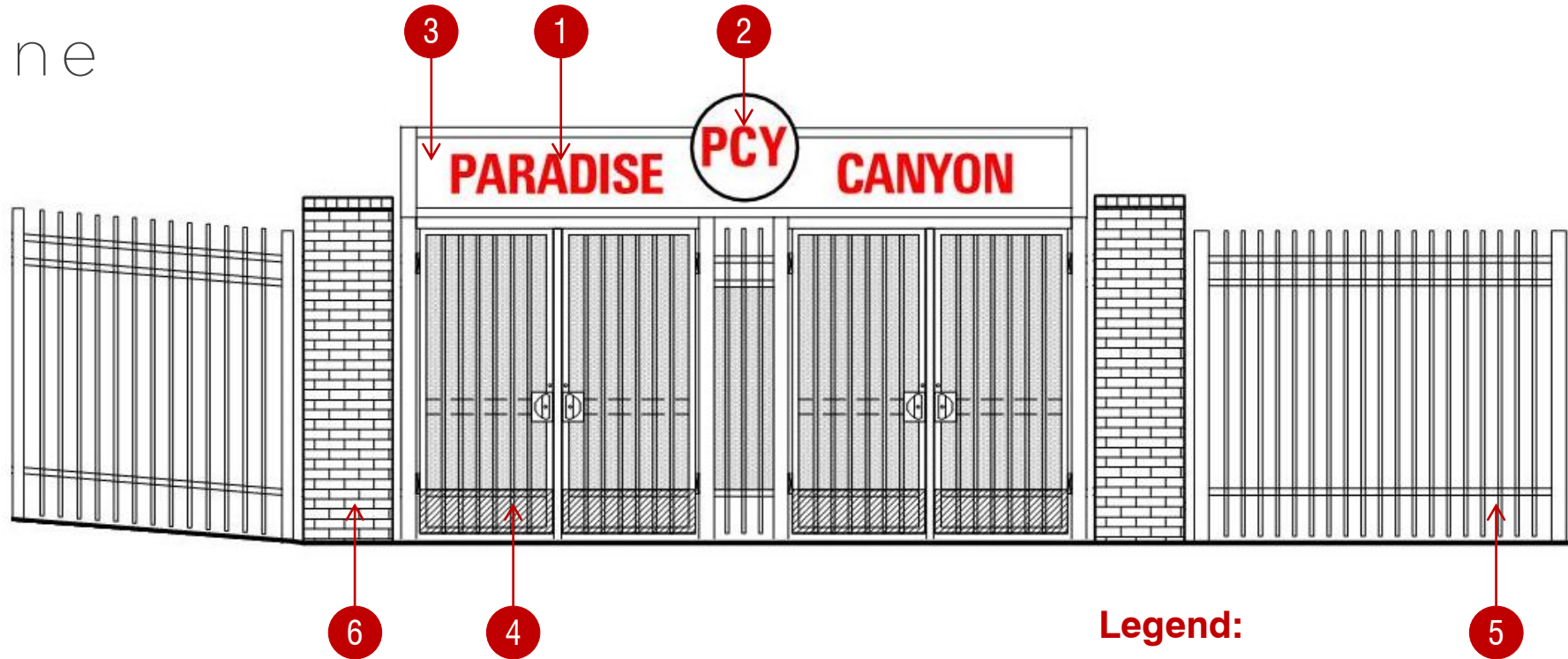


Legend:

- 1 10" ht. aluminum pinned lettering
- 2 School logo
- 3 Perforated panel w/ tube steel frame
- 4 New 7' high dual tube steel pedestrian gates
- 5 New 7' high tube steel fence

concept | inspiration
option one

LPA



Legend:

- 1 10" high aluminum pinned lettering
- 2 School logo
- 3 Perforated panel w/ tube steel frame
- 4 New 7' high dual tube steel pedestrian gates
- 5 New 7' high tube steel fence
- 6 New brick pilasters