

## *San Rafael City Schools*

### Trustee Area Map Selection

Aug. 26, 2019

# Districting Process

2

Step	Description
<b>Two Initial Hearings</b> April 30 & May 13	<b>Held prior to release of draft maps.</b> <b>Education and to solicit input on the communities in the District.</b> Hearings must be within 30 days of each other
<b>Release draft maps</b>  June 18	<b>Maps must be posted at least 7 days prior to 3<sup>rd</sup> hearing.</b>  Community Forum to discuss mapping tools and draft maps
<b>Hearings on Draft Maps</b> June 24, July 15	<b>Two meetings to discuss and revise the draft maps and to discuss the election sequencing.</b> Hearings must be within 45 days of each other
July 17 & 29	Community Forum to discuss draft maps
<b>Hearings &amp; Adoption</b> Aug 12 & August 26	<b>Map must be posted 7 days prior to adoption.</b>
TBD	<b>County Committee Hearing</b>
2020	<b>First by-district elections in three trustee areas</b>
2021	<b>Map adjusted using 2020 Census data</b>
2022	<b>Remaining two trustee areas hold first by-district elections</b>

# Districting Rules

3

## Federal Laws

- ❑ Equal Population
- ❑ Federal Voting Rights Act
- ❑ No Racial Gerrymandering

## Traditional Redistricting Principles

- ❑ Communities of interest
- ❑ Compact
- ❑ Contiguous
- ❑ Visible (Natural & man-made) boundaries
- ❑ Respect voters' choices / continuity in office
- ❑ *Planned future growth*



# Maps Considered

4

- ❑ Original Drafts
  - ▣ Green, Yellow, Purple, all drawn by NDC
- ❑ Public Maps
  - ▣ 6 maps drawn by residents using the online tool (101-104, 106, 107)
  - ▣ 1 map requested by a Board member at the community forum (105)
  - ▣ 49 maps drawn by students using the PDF kits
    - 9 maps are presented, as they represent the central elements of the remaining 34 population-balanced maps (S1 – S9)
- ❑ August 12: Focus Maps Selected
  - ▣ Board selected 103, 105, 106, and 107 as initial focus maps and discussed interest in additional alternatives

## Current Maps

5

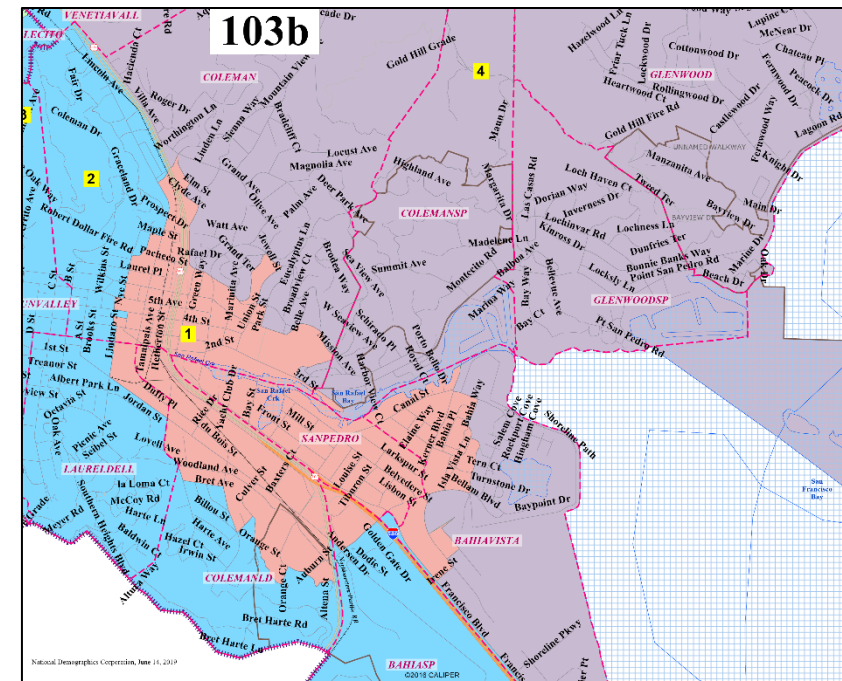
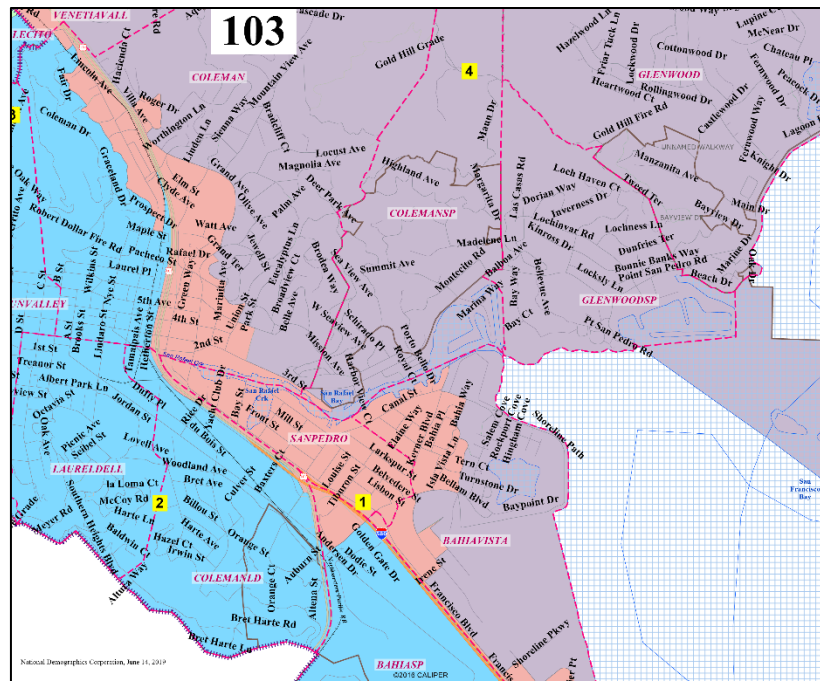
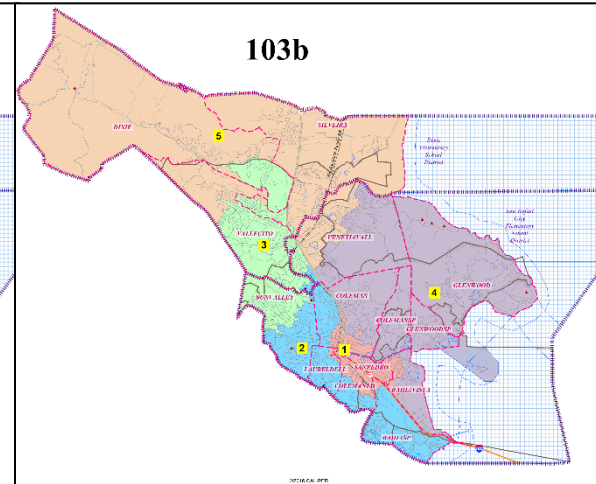
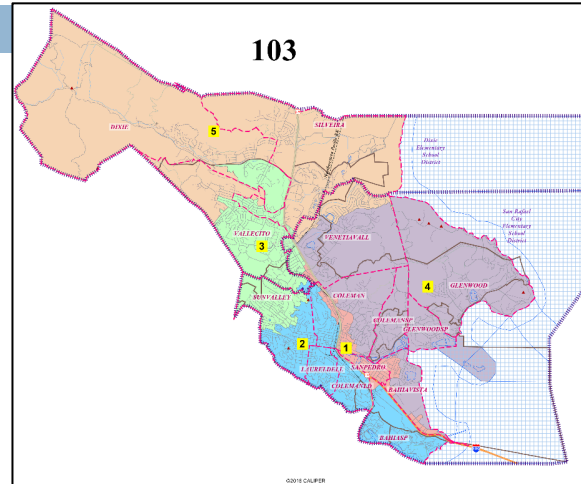
- Focus Maps 103, 105, 106, and 107
- Board Subcommittee's map 108
- New public maps 101b, 103b, 107c, 109 and 110

Total of 10 maps to consider this evening.



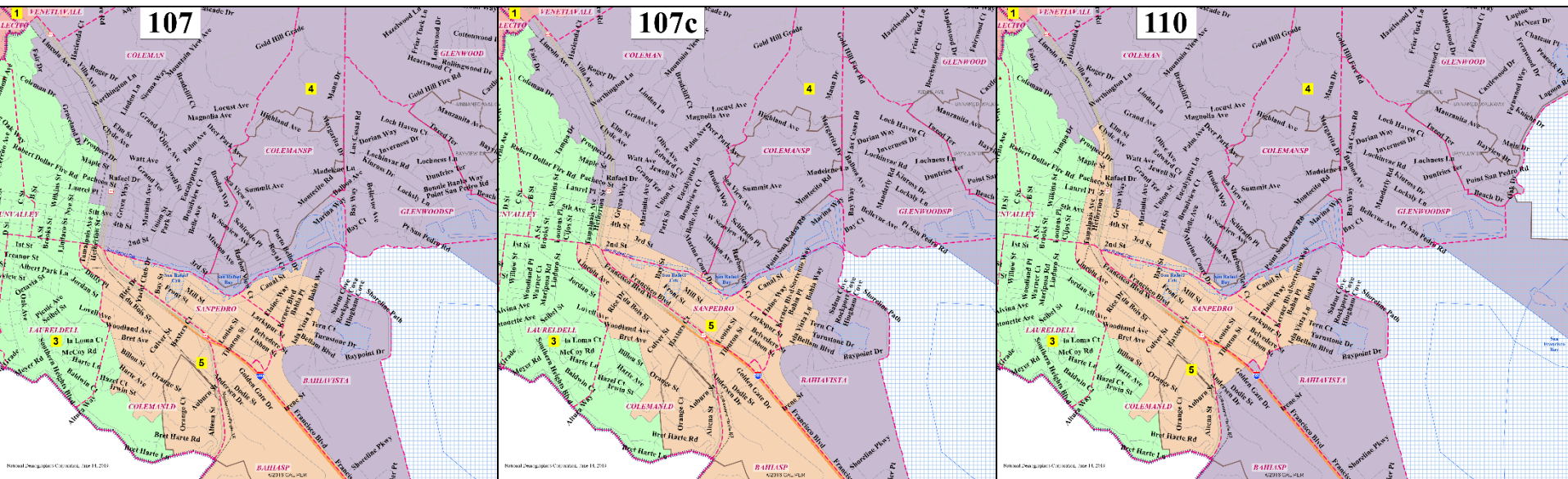
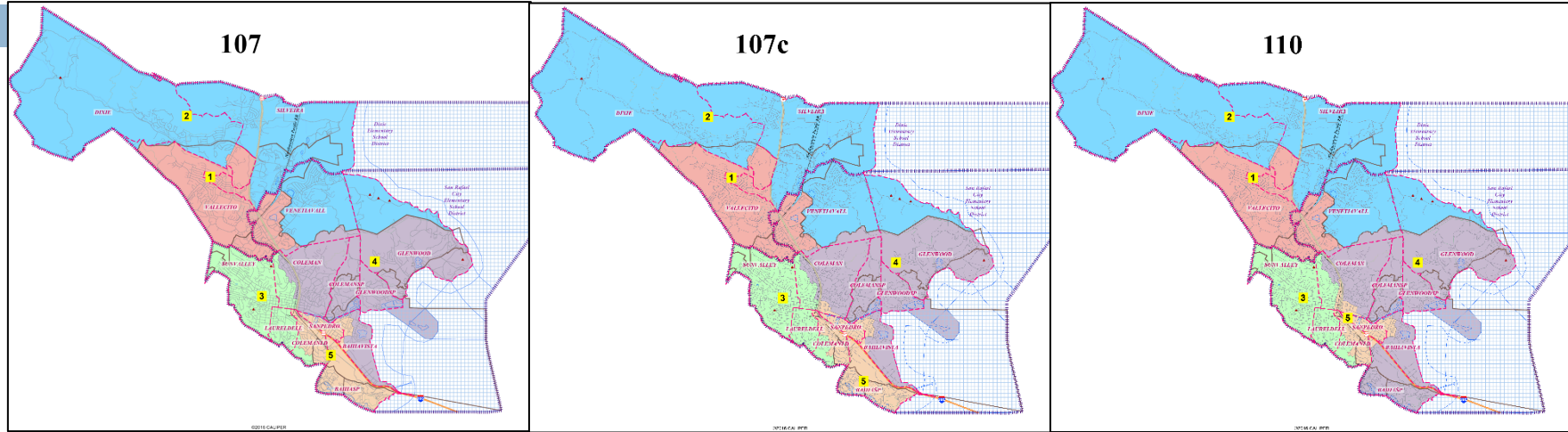
# 103 and 103b

6



# 107, 107c, 110

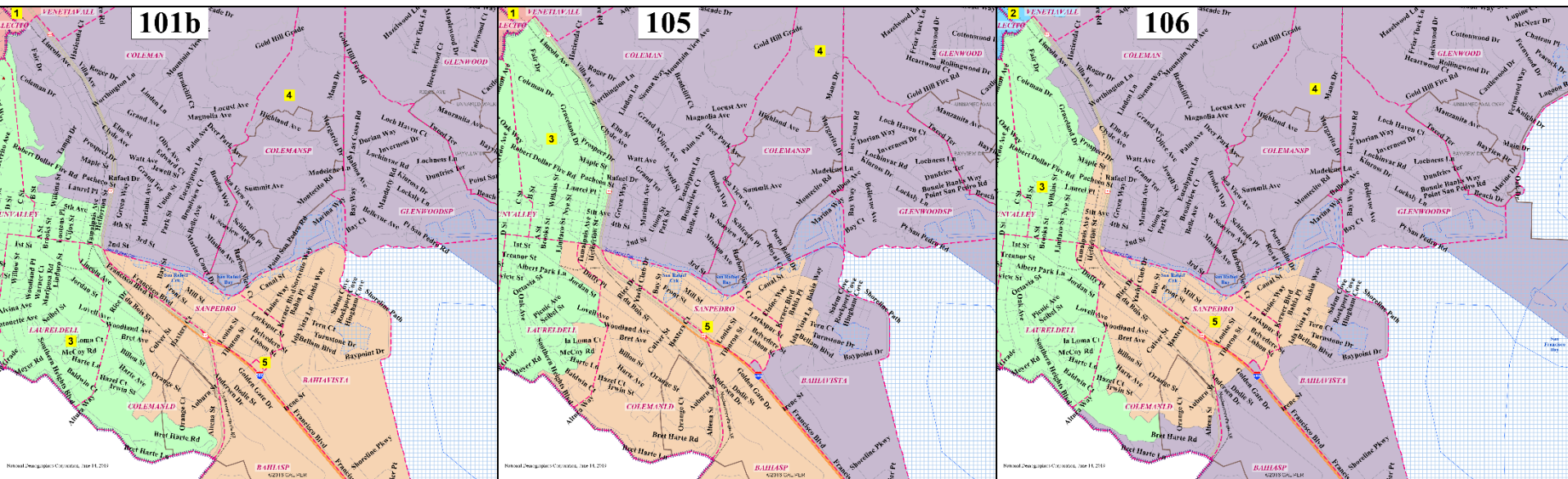
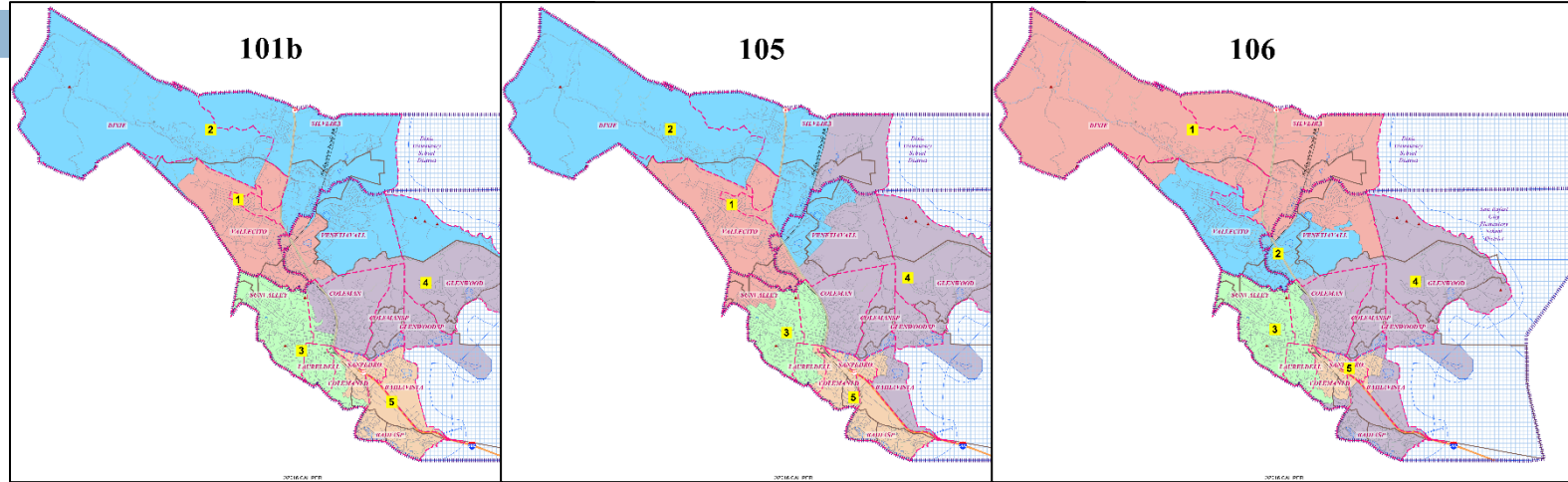
7





# Other Maps: 101b, 105, 106

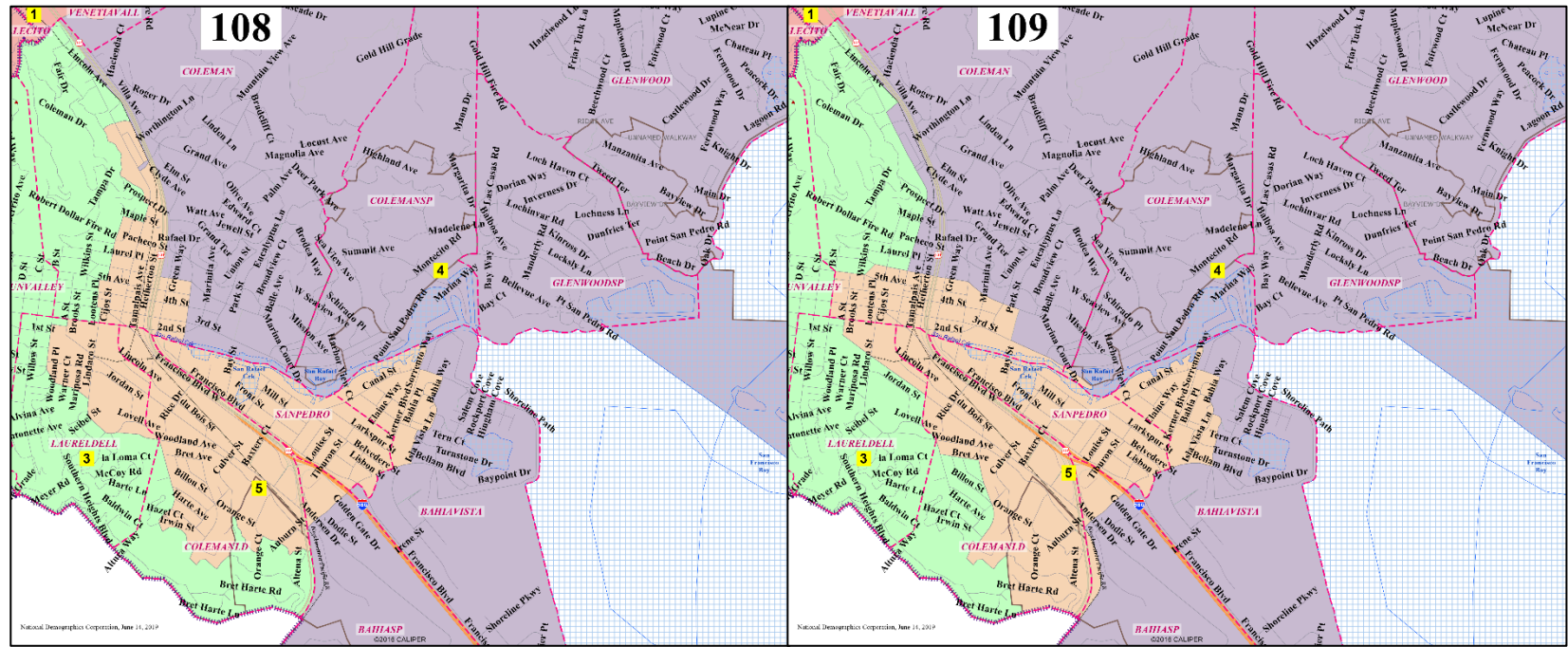
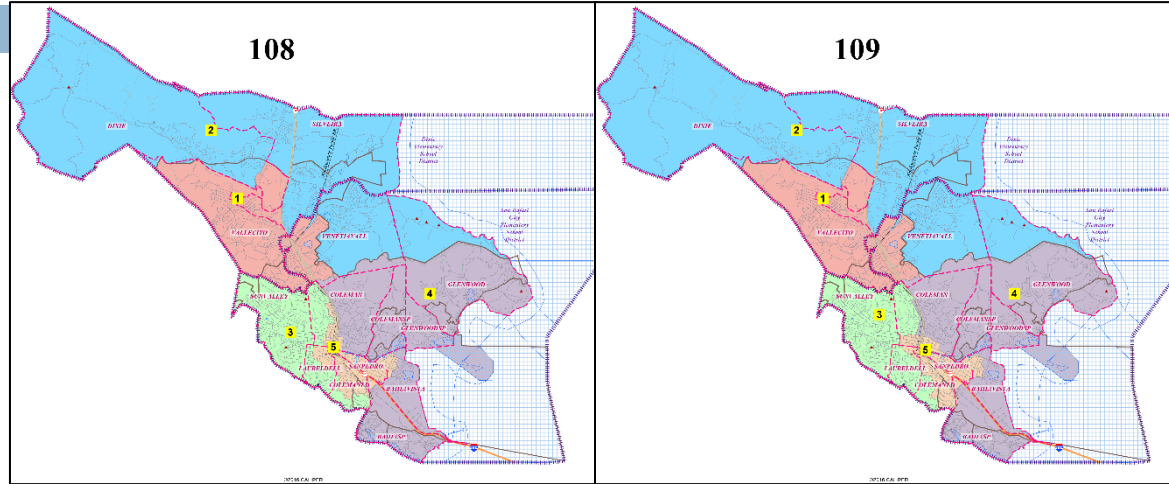
8





# Other Maps: 108, 109

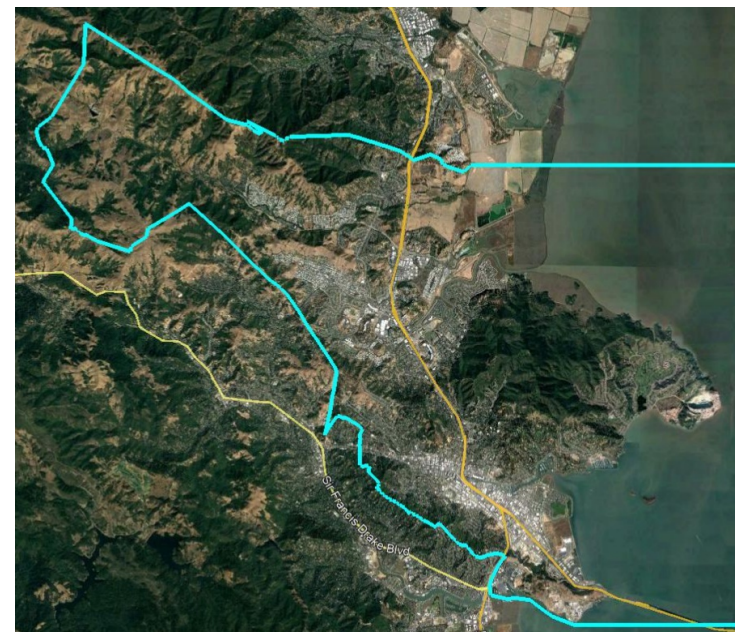
9



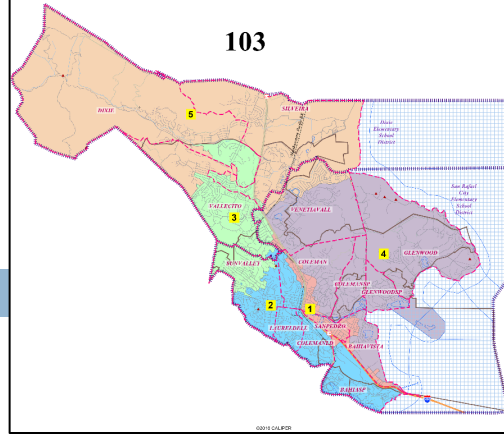
# Discussion

10

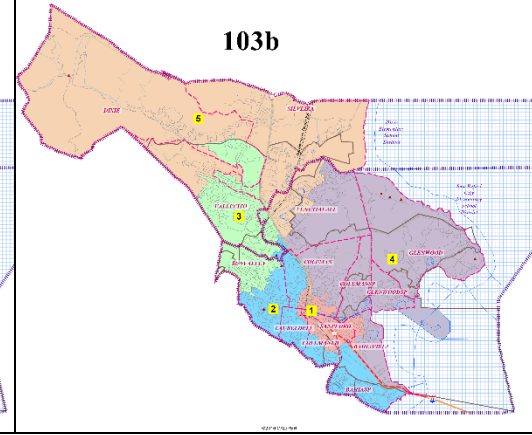
1. Hold public hearing on remaining maps.
2. Select Board-preferred map.
3. Review and confirm election sequencing for preferred map.
  - ▣ Only map 103 includes a pairing of off-cycle Board members.
4. Adopt resolution.



103

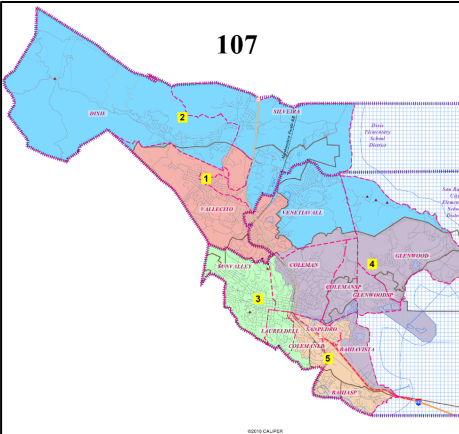


103b

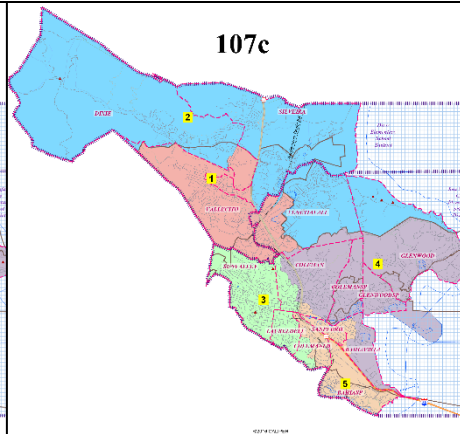


[Interactive Map](#)

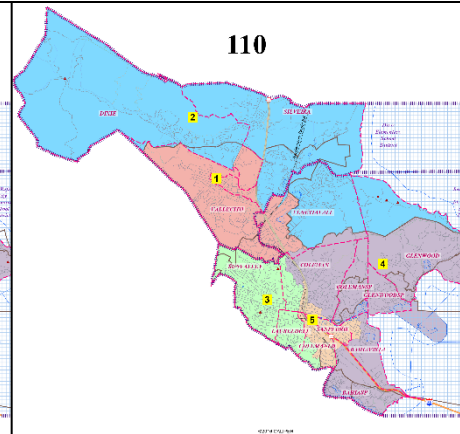
107



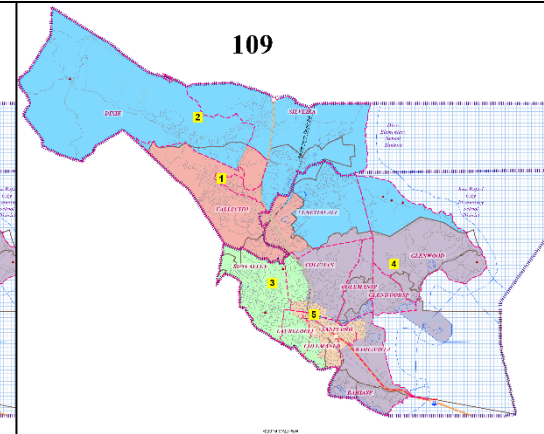
107c



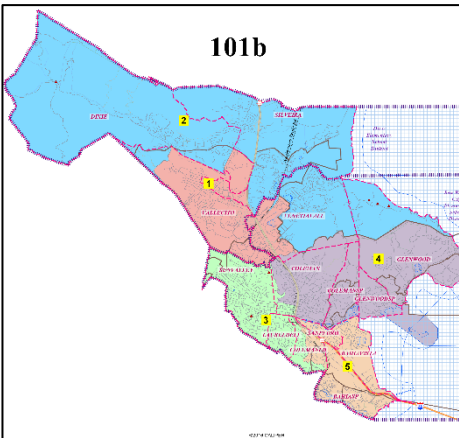
110



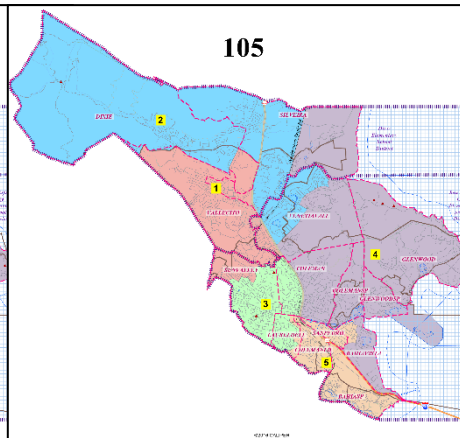
109



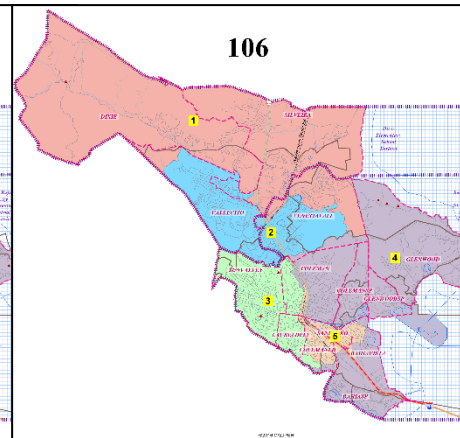
101b



105



106



108

