



BERKELEY
ADULT SCHOOL

Update on BAS
9/18/2019

Tom Reid,
Principal

Mission Statement: “... *equal access*...”

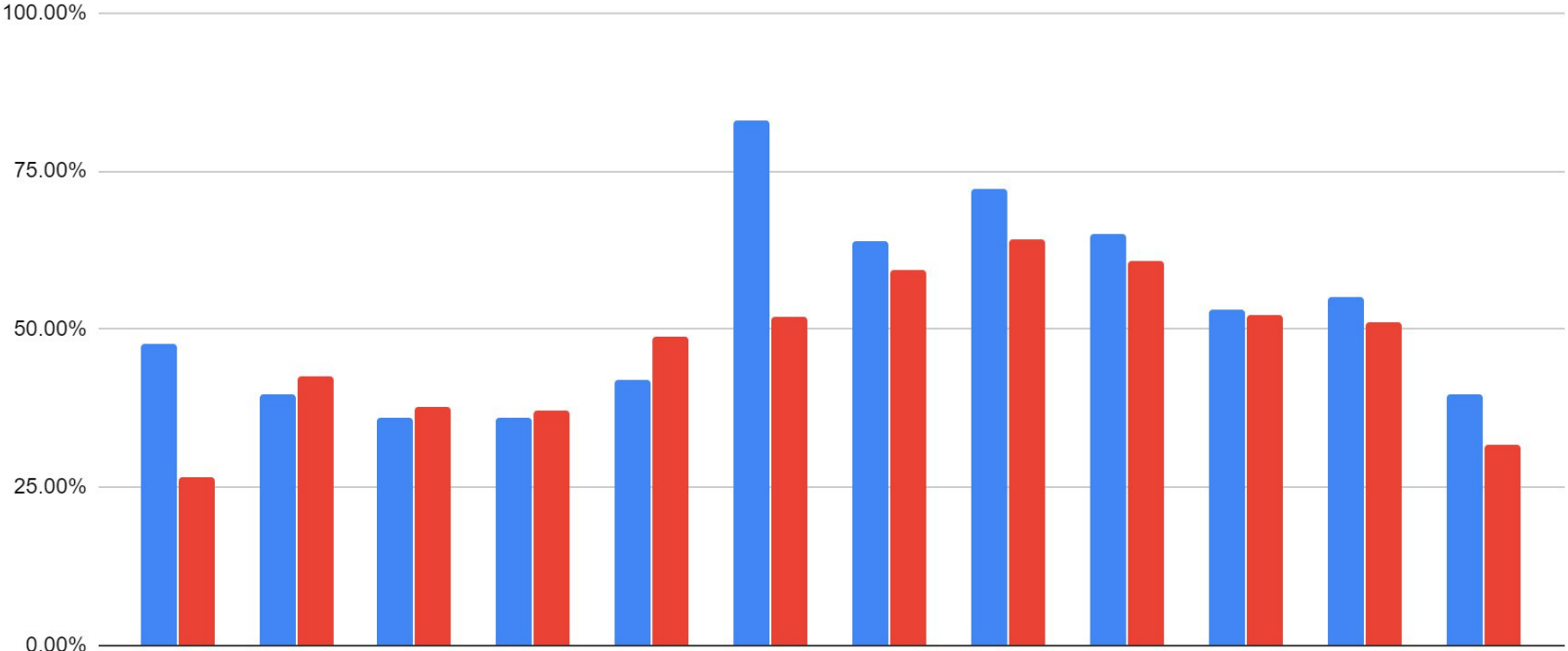
Schoolwide Learner Outcomes

BAS students are learning to

- * identify and pursue personal learning goals*
- * work effectively and respectfully in a diverse community*
- * develop the self-confidence to engage and persist*
- * think critically*
- * communicate effectively*

Students Showing Improvement - BAS and Alameda County Average, by Level

Berkeley USD Alameda County



Program Areas:

ESL

High School Diploma

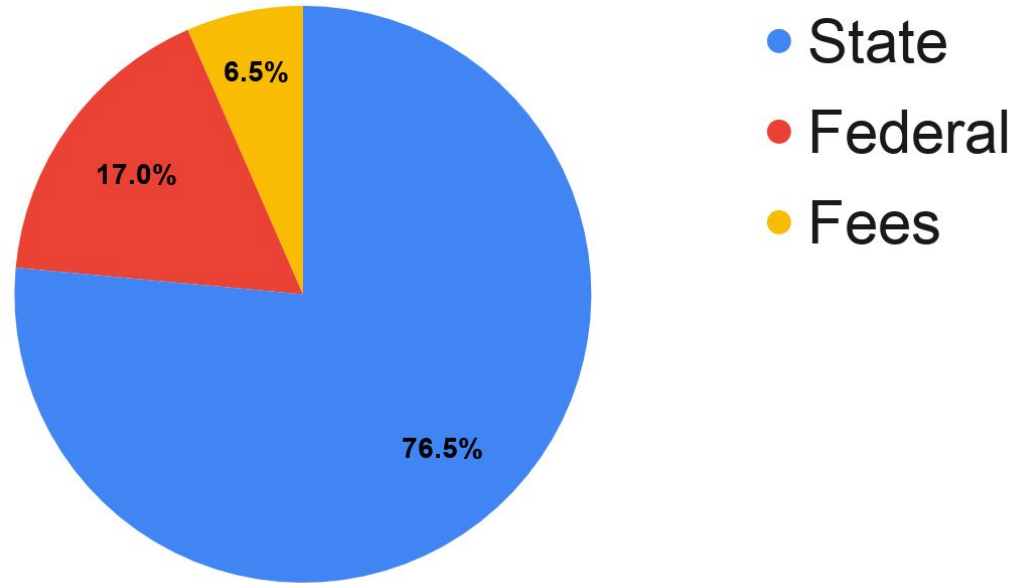
Life Long Learning

Career-Technical

Community Ed

Adults w/ Disabilities

BAS Income Sources



Northern Alameda Adult Education Collective (NAC)

Five adult schools

Four colleges

Collaborative planning
for student advancement



NAC

Opportunity

No Diploma:

77,000

English Learner:

103,000

Unemployed:

26,000



Colocation:

ESL

High School Diploma

Career-Technical

BHS CTE

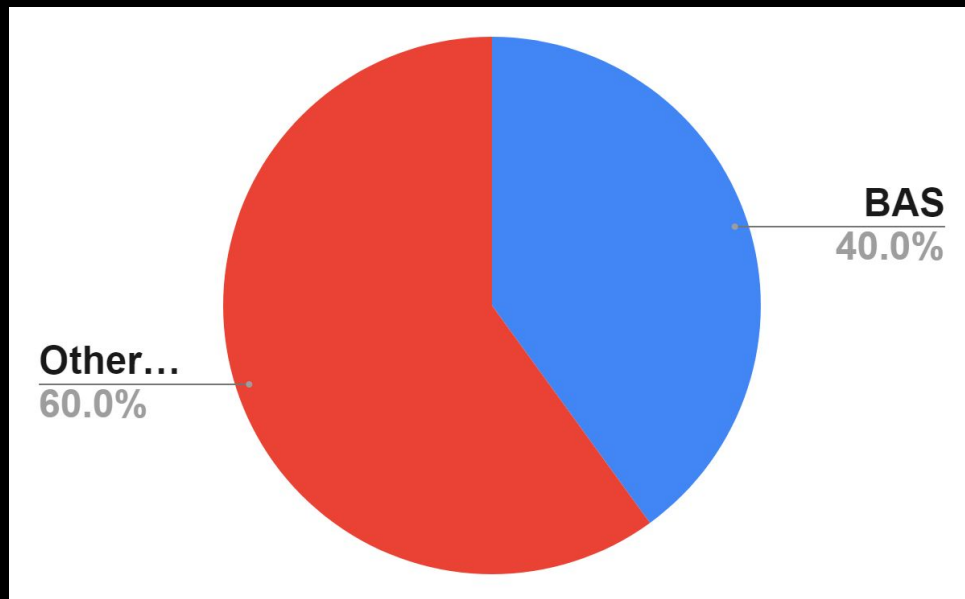
Berkeley City College

Workforce Devel. Bd.

New Adult Education Funding

Funding by
Allocation
(not ADA)

Distribution of Funds Among Consortium Members



Growth Areas Found in Self- Study

Curriculum review processes

Measurement of Schoolwide Learner Outcomes

Use of data/information



Self Study 1/2017-1/2018



WASC Visit
March 2018

Where We Are Going 2019-20

Curriculum alignment

Data use for planning at all levels

Collaborations with Peralta colleges

Collaborations with other units of BUSD