

DATE: October 17, 2019
TO: Board of Trustees
SUBJECT: Authorization to Proceed with Security Camera System Design and Seek Bids for Installation Contractor

ACTION ITEM

That the Board of Trustees authorizes District Staff to (1) proceed with the Criteria Development, Bid Package, and Bidding Phases outlined in JKAE's Surveillance Camera Systems Proposal approved by the Board on May 16, 2019, and (2) work with JKAE and the District's construction manager, Blach Construction, to develop bid documents and seek bids for a security camera installation contractor.

BACKGROUND

At its May 16, 2019, meeting, the Board approved a proposal from JK Architecture Engineering (JKAE) for the development of the design and construction documents to implement security camera systems throughout the District's seven school campuses and the District Office.

While the proposal sets forth several phases, the Board directed staff to proceed only with the Conceptual Design Phase, with the expectation that the Board would decide whether to proceed with subsequent optional phases after the presentation of the conceptual design.

On September 26, representatives from JKAE and its consultant presented conceptual designs and information to the Board for the capture of facial images and license plate numbers at various points of entry as identified by District staff.

Following the September 26 meeting, District staff worked with JKAE and its consultant to revise the conceptual designs to include entry points that were not included in the original designs. Those updated designs are attached hereto.

Beginning October 7, 2019, the District sent email invitations to District parents, staff, and community members to review the updated designs and to provide feedback by responding to an online survey. On the evening of October 9, 2019, District staff and representatives from JKAE and its consultant shared the updated designs during a community meeting at Nesbit Elementary School. District staff will share a summary of the online survey results.

If the Board is satisfied with the updated conceptual designs and community input, District staff will seek authorization to (1) proceed with the Criteria Development, Bid Package, and Bidding Phases outlined in JKAE's Surveillance Camera Systems Proposal approved by the Board on May 16, 2019, and (2) work with JKAE and the District's construction manager, Blach Construction, to develop bid documents and seek bids for a security camera installation contractor. The District will seek approval of the Board before entering into an agreement with the successful bidder.



Security Camera Conceptual Design

**Central Elementary School
Cipriani Elementary School
Fox Elementary School
Nesbit Elementary School
Redwood Shores Elementary School
Sandpiper Elementary School
Ralston Middle School
BRSSD District Office**



The Engineering Enterprise

CENTRAL ELEMENTARY SCHOOL
PROPOSED CAMERA PLAN



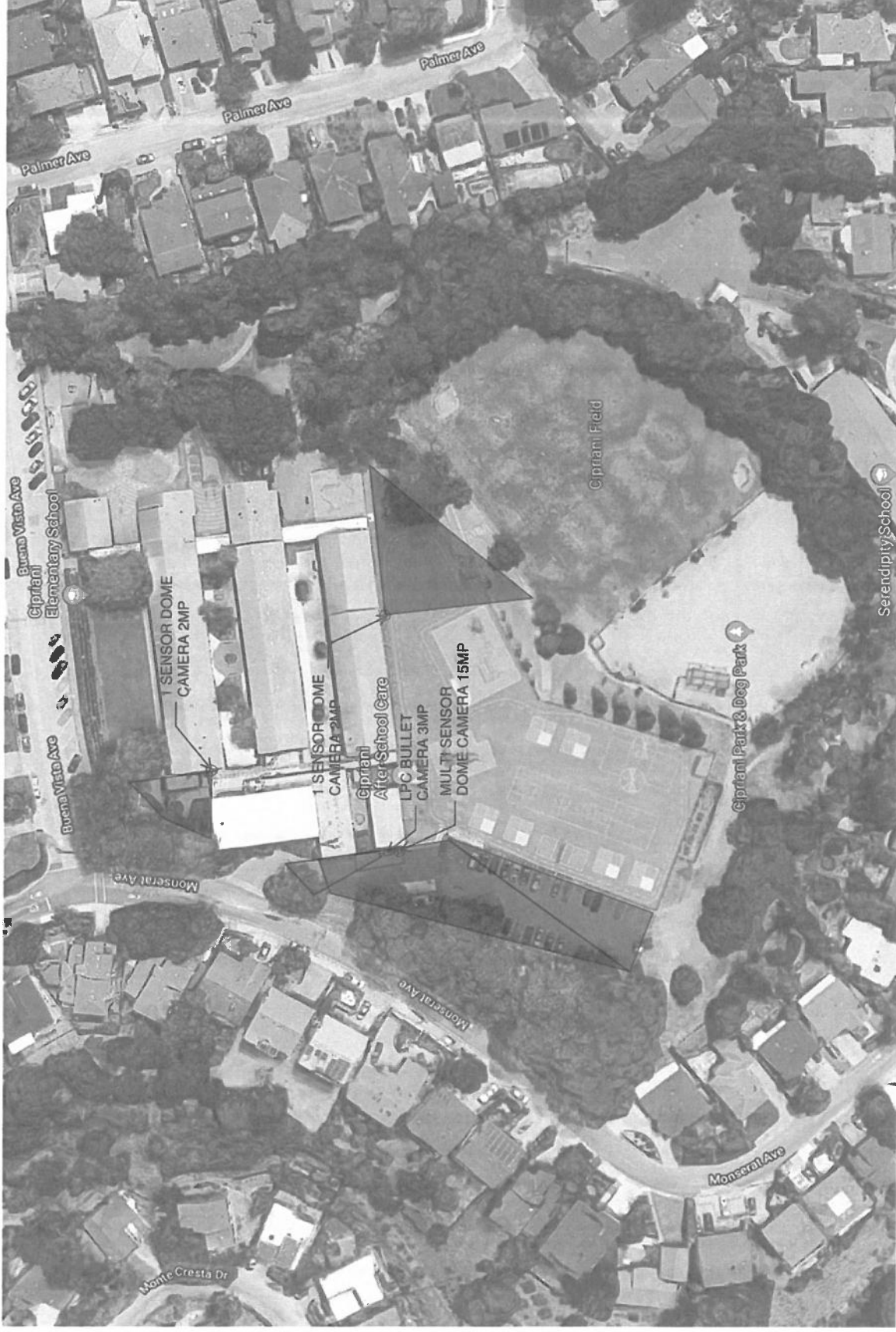
Central Elementary School



JK
ARCHITECTURE
ENGINEERING

BRSSD Security Camera Conceptual Design

CIPRIANI ELEMENTARY SCHOOL PROPOSED CAMERA PLAN



Cipriani Elementary School



JK
ARCHITECTURE
ENGINEERING

BRSSD Security Camera Conceptual Design

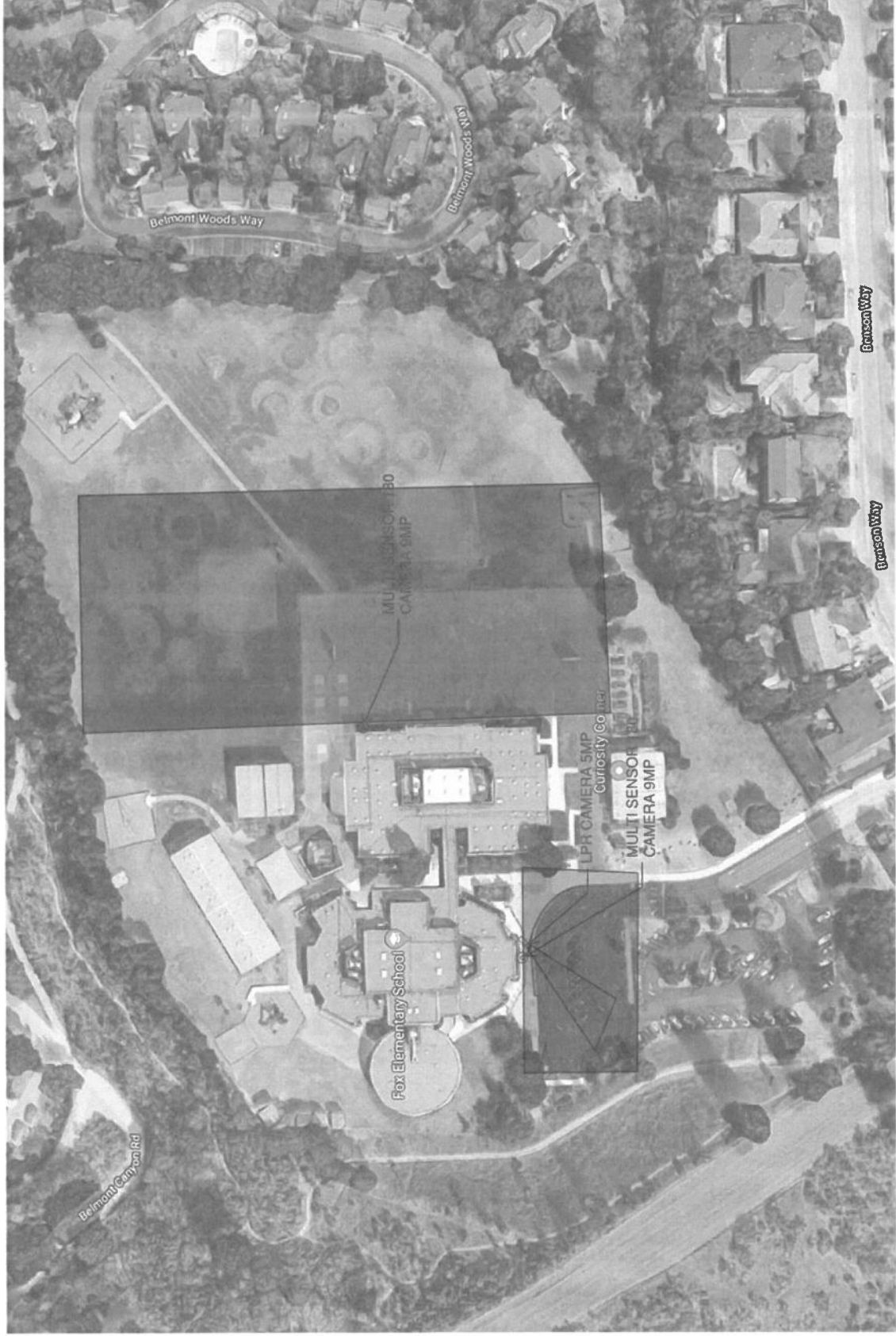
FOX ELEMENTARY SCHOOL PROPOSED CAMERA PLAN



Fox Elementary School



JK
ARCHITECTURE
ENGINEERING



BRSSD Security Camera Conceptual Design

NESBIT ELEMENTARY SCHOOL PROPOSED CAMERA PLAN



Nesbit Elementary School



JK
 ARCHITECTURE
 ENGINEERING

BRSSD Security Camera Conceptual Design

REDWOOD SHORES ELEMENTARY SCHOOL
PROPOSED CAMERA PLAN



Redwood Shores Elementary School

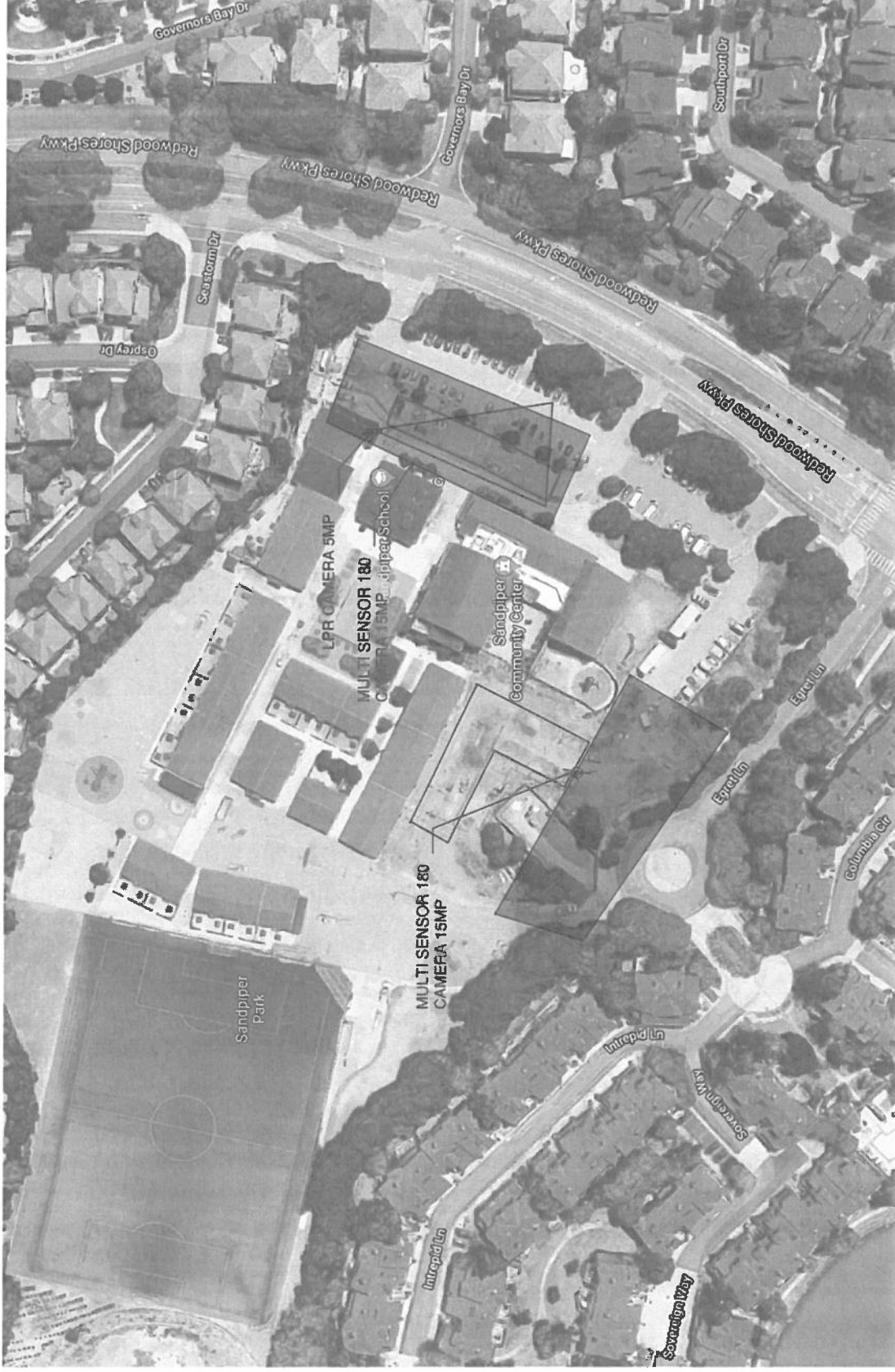


ARCHITECTURE
ENGINEERING



BRSSD Security Camera Conceptual Design

SANDPIPER ELEMENTARY SCHOOL
PROPOSED CAMERA PLAN



Sandpiper Elementary School



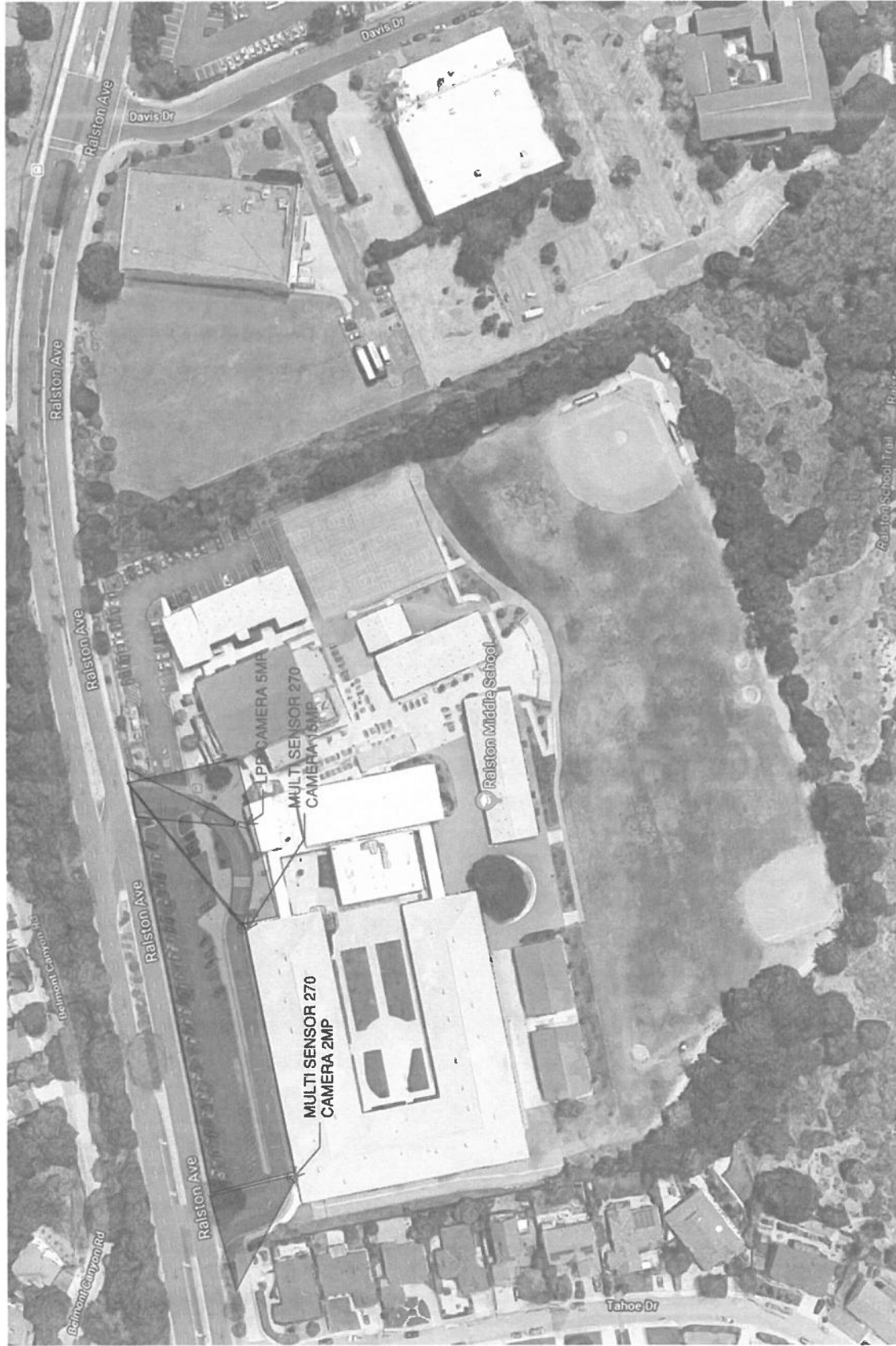
JK
ARCHITECTURE
ENGINEERING

BRSSD Security Camera Conceptual Design

RALSTON MIDDLE SCHOOL
PROPOSED CAMERA PLAN



BRSSD



Ralston Middle School



JK
ARCHITECTURE
ENGINEERING

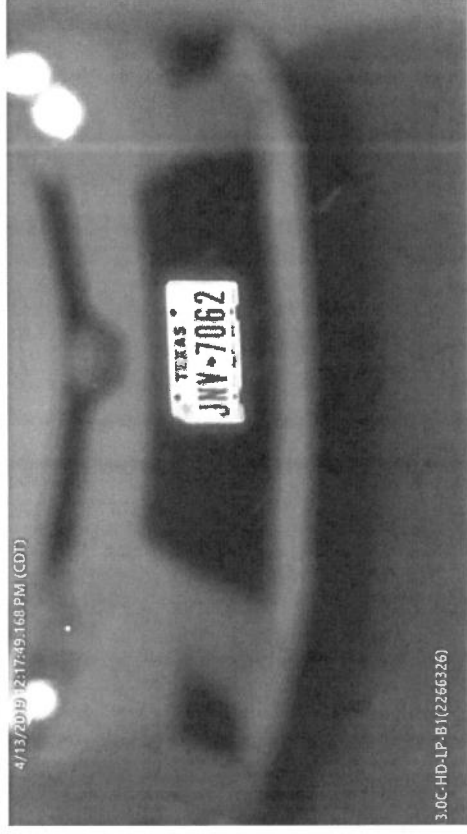
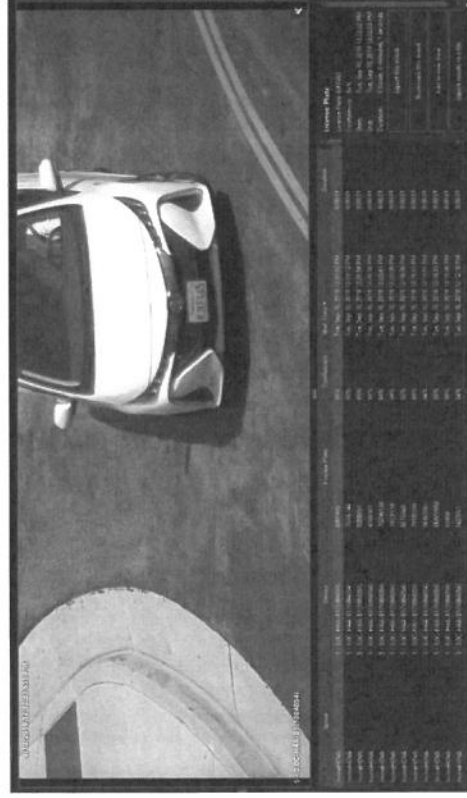
BRSSD Security Camera Conceptual Design

DISTRICT OFFICE
PROPOSED CAMERA PLAN



BRSSD Security Camera Conceptual Design

SAMPLE FROM AN LPC (LICENSE PLATE CAMERA) - DAY DEMONSTRATING LICENSE PLATE READER TECHNOLOGY



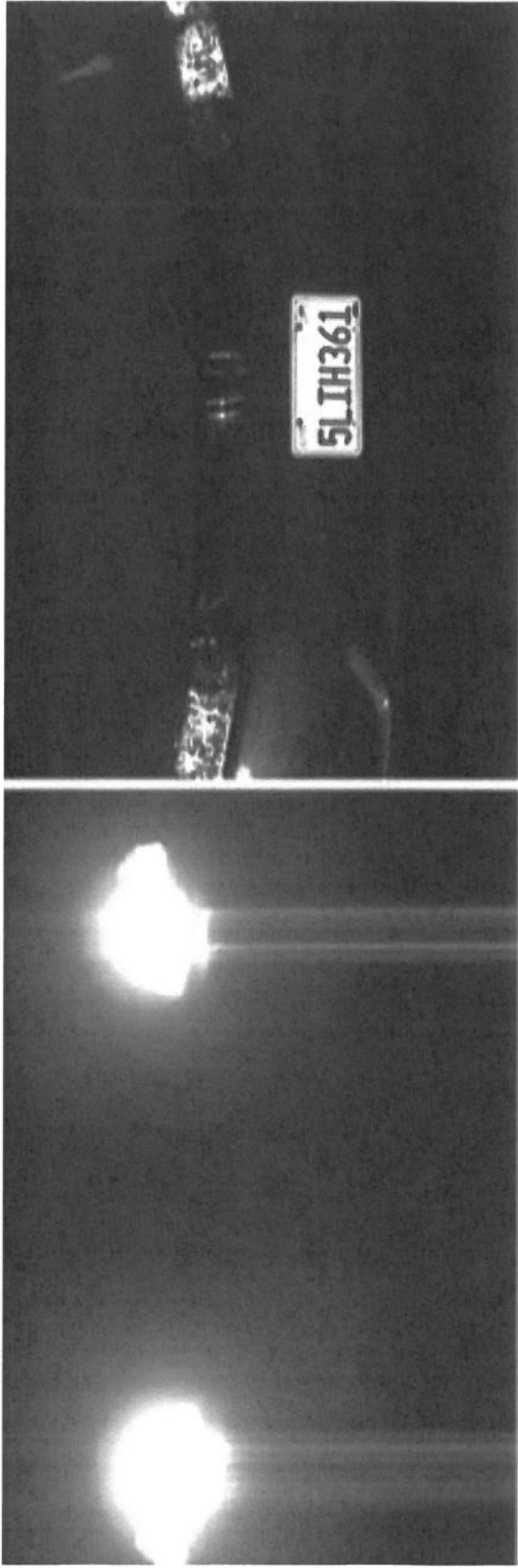
BRSSD Security Camera Conceptual Design



The Engineering Enterprise



SAMPLE FROM AN LPC (LICENSE PLATE CAMERA) - NIGHT
DEMONSTRATING LICENSE PLATE READER TECHNOLOGY



BRSSD Security Camera Conceptual Design



The Engineering Enterprise



BRSSD

SAMPLE FROM A MULTISENSOR CAMERA - DAY

Search...

- Door Release View Intercom
- ACM Wedge
- ACC/ACM-Verify
- 12MP Pro License Plate View
- HSA
- Maps
 - End-to-End Solution
 - Pro Camera Map
 - U.S. Map
 - Non-Pro Cameras Map
 - ACM Web Page
- East Cameras
 - 5.0L-H4A-BO1-IR(1083302)
 - 5.0L-H4A-BO1-IR(103188)
 - 12L-H4PRO-B(918569)
 - 16L-PRO-B(589207)
- West Cameras
 - 3.0C-H4V1-RO1-IR(2353006)
 - 3.0C-H4A-DO1(1069559)
- Multisensor
 - 32C-H4A-4MH-360(2355539)(1)
 - 32C-H4A-4MH-360(2355539)(2)
 - 32C-H4A-4MH-360(2355539)(3)
 - 32C-H4A-4MH-360(2355539)(4)
- 12L-H4PRO-B(1671194)
- 16LH4PRO-B(669561)
- 30L-H4PRO-B(1160900)
- North Cameras
 - 2.0C-H4A-BO1-IR(1002720)
 - 2.0C-H4A-BO1-IR(1003214)
 - 8L-H4PRO-B(1621195)
 - 8L-H4PRO-B(1598140)

6

Site Login View 1 x x +

Live Recorded

32C-H4A-4MH-360(2355539)(2)

32C-H4A-4MH-360(2355539)(4)

32C-H4A-4MH-360(2355539)(3)

32C-H4A-4MH-360(2355539)(4)

BRSSD Security Camera Conceptual Design



The Engineering Enterprise



BRSSD

SAMPLE FROM A MULTISENSOR CAMERA - NIGHT

AVIGILON LPC CAPTURE IMAGES

Site Login View 1 x x + Q Search Q Recorded

Live Q Recorded

Search...

- Door Release View Intercom
- ACM Wedge
- ACC/ACM-Verify
- 12MP Pro License Plate View
- H5A
- Maps
- End-to-End Solution
- Pro Camera Map
- US Map
- Non-Pro Cameras Map
- ACM Web Page
- East Cameras
 - 50L-H4A-BO1-IR(1083302)
 - 50L-H4A-BO1-IR(1038188)
 - 12L-H4PRO-B(918569)
 - 16L-PRO-B(589207)
- West Cameras
 - 30C-H4VI-RO1-IR(2353006)
 - 30C-H4A-DO1(1069559)
- Multisensor
 - 32C-H4A-4MH-360(2355539)(1)
 - 32C-H4A-4MH-360(2355539)(2)
 - 32C-H4A-4MH-360(2355539)(3)
 - 32C-H4A-4MH-360(2355539)(4)

9/20/2019 05:13:59.183 AM 32C-H4A-4MH-360(2355539)(4)

9/20/2019 04:52:56.063 AM 32C-H4A-4MH-360(2355539)(2)

9/20/2019 04:52:56.026 AM 32C-H4A-4MH-360(2355539)(3)

9/20/2019 04:52:56.051 AM 32C-H4A-4MH-360(2355539)(4)

FRIDAY, SEPTEMBER 20, 2019

4 AM 5 AM 6 AM 7 AM 8 AM 9 AM 10 AM 11 AM 12 PM 1 PM 2 PM 3 PM 4 PM 5 PM 6 PM 7 PM 8 PM

4:59:55.646 AM Friday, September 20, 2019

32C-H4A-4MH-360(2355539)(1)

32C-H4A-4MH-360(2355539)(2)

32C-H4A-4MH-360(2355539)(3)

32C-H4A-4MH-360(2355539)(4)

BRSSD Security Camera Conceptual Design