

**BEFORE THE BOARD OF TRUSTEES
OF THE NAPA VALLEY UNIFIED SCHOOL DISTRICT
NAPA COUNTY, CALIFORNIA
RESOLUTION NO. 20-09**

**RESOLUTION APPROVING CLOSURE OF YOUNTVILLE ELEMENTARY SCHOOL
AND CONSOLIDATION WITH WILLOW ELEMENTARY SCHOOL AND
DETERMINING THAT THE PROJECT IS EXEMPT FROM THE CALIFORNIA
ENVIRONMENTAL QUALITY ACT**

WHEREAS, throughout the 2018-2019 fiscal year and ongoing, the Napa Valley Unified School District ("District") has undergone a detailed and holistic review of its budget in order to assess and remedy financial challenges including dramatic declining enrollment and, as a result, declining revenues; and

WHEREAS, after reviewing financial and enrollment data, District staff recommended that the Board of Trustees ("Board") examine the possibility of closing and/or consolidating some of the District's smaller campuses as part of an overall plan to reduce annual operational costs and maintain long term financial stability in the District; and

WHEREAS, on August 8, 2019, pursuant to Education Code sections 17387, *et seq.*, the Board convened a "7-11" District Advisory Committee ("Committee") consisting of 11 members and 4 alternates to advise the Board on potential school closures and/or consolidations and on the use of real property no longer needed for school purposes; and

WHEREAS, the Committee met on August 20, September 3, September 17, and October 1. During each meeting, the Committee received and considered public comment as well as information from District staff regarding budget, financial status, historical enrollment analysis, projected enrollment trends, facilities capacity, and other policy considerations; and

WHEREAS, the school sites that were selected for review by the Committee included Yountville Elementary School ("YES"), a public elementary school located at 6554 Yount Street, Yountville, California; and

WHEREAS, on October 1, 2019, the Committee approved its Report on Recommendations Regarding Small School Closures and Consolidations ("Report"), which the Chair and Vice-Chair of the Committee presented to the Board on October 15, 2019. The Report recommends, among other things, that the Board take action to close YES and consolidate it with Willow Elementary School through an appropriate boundary adjustment; and

WHEREAS, the Report also recommended the following implementation measures ("Implementation Measures") related to closure of YES and consolidation with Willow Elementary School:

- That the Board of Education revise its Open Enrollment Policy to provide priority for students affected by school closures;
- That the Board of Education review the before and after school programs that support the additional students that will be coming to them via Yountville Elementary School. The Committee values the afterschool programs and strongly recommends that District staff work with community agencies and work to ensure that the programs continue, because of the value of these programs to the students. The Committee also recommends that each program at Willow Elementary School be able to absorb the increase of the programs due to the increase in enrollment.
- That transportation be provided to resident students of Yountville Elementary School to and from Willow Elementary School.

WHEREAS, because of declining enrollment, financial challenges, and based on the recommendations of the Committee, the District now desires to take action to close YES and consolidate it with Willow Elementary School as of June 30, 2020, the last day of the fiscal year when the current academic school year ends; and

WHEREAS, the closure of YES and consolidation with Willow Elementary School (collectively, the “Project”) constitute a project for purposes of the California Environmental Quality Act (Pub. Resources Code, § 21000, *et seq.*, (“CEQA”));

WHEREAS, Public Resources Code section 21080.18 provides that CEQA does “not apply to the closing of any public school in which kindergarten or any of grades 1 through 12 is maintained or the transfer of students from that public school to another school if the only physical changes involved are categorically exempt”; and

WHEREAS, the District has considered the effects of the Project and has determined that the Project will not have any significant effect on the environment; and

WHEREAS, as detailed below, no physical changes are anticipated to result from the Project, thus the statutory exemption contained in Public Resources Code section 21080.18 applies to the Project; and

WHEREAS, the existing classroom capacity at Willow Elementary School is 600 students; and

WHEREAS, as of October 2, 2019, the student enrollment at YES is 119 and the student enrollment at Willow Elementary School is 397; and

WHEREAS, even if all of the students attending YES in the current school year attend Willow Elementary School in the 2020-2021 school year, which is not expected due to historical open enrollment trends and projected declining enrollment, the total enrollment at Willow Elementary School for 2020-2021 would be approximately 516 students; and

WHEREAS, Willow Elementary School therefore has existing facility capacity to absorb all of the current student body of YES without the need for any increase in capacity through construction or addition of new classrooms; and

WHEREAS, the CEQA Guidelines (Cal. Code Regs., tit. 14, §§ 15000, *et seq.*) exempt from CEQA evaluation projects which consist of minor additions to existing schools within existing school grounds where the addition does not increase original student capacity by more than 25% or ten classrooms, whichever is less (CEQA Guidelines, § 15314). Since the District will not need to add classroom space at Willow Elementary School as a result of the Project, it will clearly not increase capacity by the lesser of 25% or ten classrooms, and the Project is therefore categorically exempt; and

WHEREAS, the only physical change is the location of the students, thus the Project is statutorily exempt from CEQA under Public Resources Code section 21080.18 and categorically exempt under State CEQA Guidelines section 15314; and

WHEREAS, the District has conducted traffic analysis to confirm that the majority of the students that are currently attending YES do not reside within the existing attendance area for YES, and, as shown on slide 5 of the Boundary Presentation attached hereto as Exhibit A and incorporated by reference, the majority of such students reside in central Napa Valley and thus closer to Willow Elementary School; as a result, closure to YES and consolidation with Willow Elementary School will reduce vehicle miles traveled pursuant to California Code of Regulations, title 14, § 15064.3; and

WHEREAS, the District has considered public comments received by the District related to the Project, including at its meetings on October 15 and 24, 2019, and all content and comment received by the 7-11 Committee at its meetings on August 20, September 3, September 17, and October 1; and

WHEREAS, the Project does not involve any of the following and so is eligible for a categorical exemption as described above under State CEQA Guidelines section 15300.2:

- (a) the cumulative impact of successive projects of the same type in the same place, which over time are significant;
- (b) an activity where there is a reasonable possibility that the activity will have a significant effect on the environment due to unusual circumstances;
- (c) a project which may result in damage to scenic resources, including but not limited to trees, historic buildings, rock outcroppings or similar resources, within a highway officially designated as a state scenic highway;
- (d) a hazardous waste site which is included on any list compiled pursuant to Section 65962.5 of the Government Code;

- (e) a project which may cause a substantial adverse change in the significance of a historical resource; and

WHEREAS, the CEQA Guidelines also exempt from further CEQA review those activities that are covered by the general rule that CEQA applies only to projects which have the potential for causing a significant effect on the environment. Where it can be seen with certainty that there is no possibility that the activity in question may have a significant effect on the environment, the activity is not subject to CEQA (the "Common Sense Exemption"); and

WHEREAS, upon a determination that the Project is exempt from CEQA, the District is entitled to file a Notice of Exemption with the County Clerk pursuant to California Code of Regulations, Title 14, section 15062.

NOW, THEREFORE, BE IT FOUND, DETERMINED AND RESOLVED BY THE BOARD OF EDUCATION OF THE NAPA VALLEY UNIFIED SCHOOL DISTRICT, NAPA COUNTY, CALIFORNIA, AS FOLLOWS:

1. The foregoing recitals are adopted as true and correct.
2. Yountville Elementary School, located at 6554 Yount Street, Yountville, California, shall be closed and consolidated with Willow Elementary School as of June 30, 2020, the last day of the fiscal year when the current academic school year ends. As a result, the Board hereby approves an adjustment to the District's boundaries so that, effective July 1, 2020, all of the current attendance area for Yountville Elementary School will be included within the attendance area for Willow Elementary School, as described and discussed on slides 7 and 8 of the Boundary Presentation attached hereto as Exhibit A.
3. The Board hereby approves the Project and finds and determines that the Project is in the best interests of the District, its students, and the community.
4. The Board finds that the Project will not have a significant effect on the environment.
5. The Project is hereby found to be exempt from the requirements of CEQA pursuant to Public Resources Code section 21080.18 and CEQA Guidelines section 15314, as set forth above.
6. District staff are hereby authorized and directed to prepare and file a Notice of Exemption for the Project in accordance with CEQA and the State CEQA Guidelines, and the findings set forth in this Resolution.
7. The Board also directs District staff to consider the feasibility of the Committee's recommended Implementation Measures and, if applicable, bring such Measures back to the Board for future consideration or action.

8. The Superintendent and/or her designee are authorized and directed to take such further actions as may be necessary and appropriate to carry out the intent of this Resolution.

The foregoing Resolution was adopted at a meeting of the Governing Board of the Napa Valley Unified School District on October 24, 2019, by the following vote:

AYES:

NOES:

ABSTAIN:

ABSENT:

Board President
Napa Valley Unified School District

CERTIFIED TO BE A TRUE
AND CORRECT COPY:

Clerk
Napa Valley Unified School District

EXHIBIT A
BOUNDARY PRESENTATION

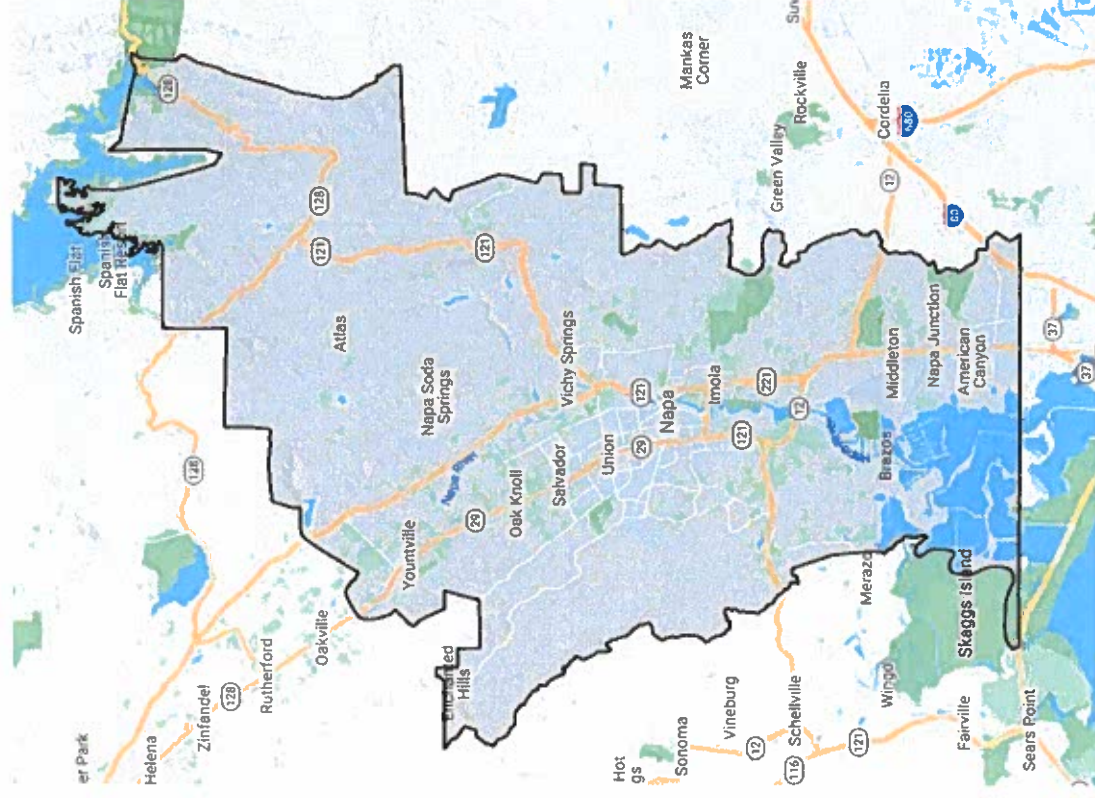
[Attached]

Boundary Presentation

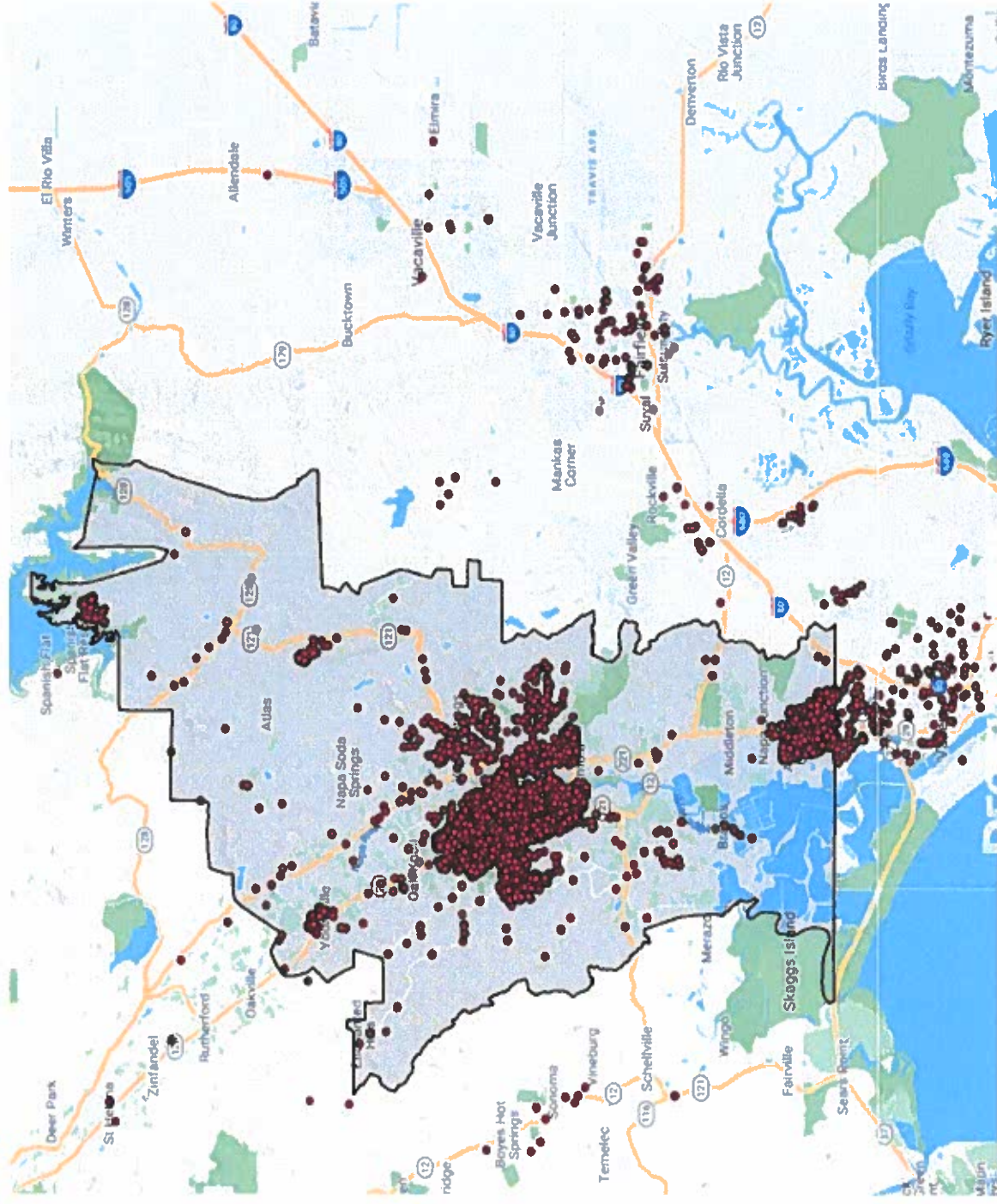
7.11 Committee Meeting #3

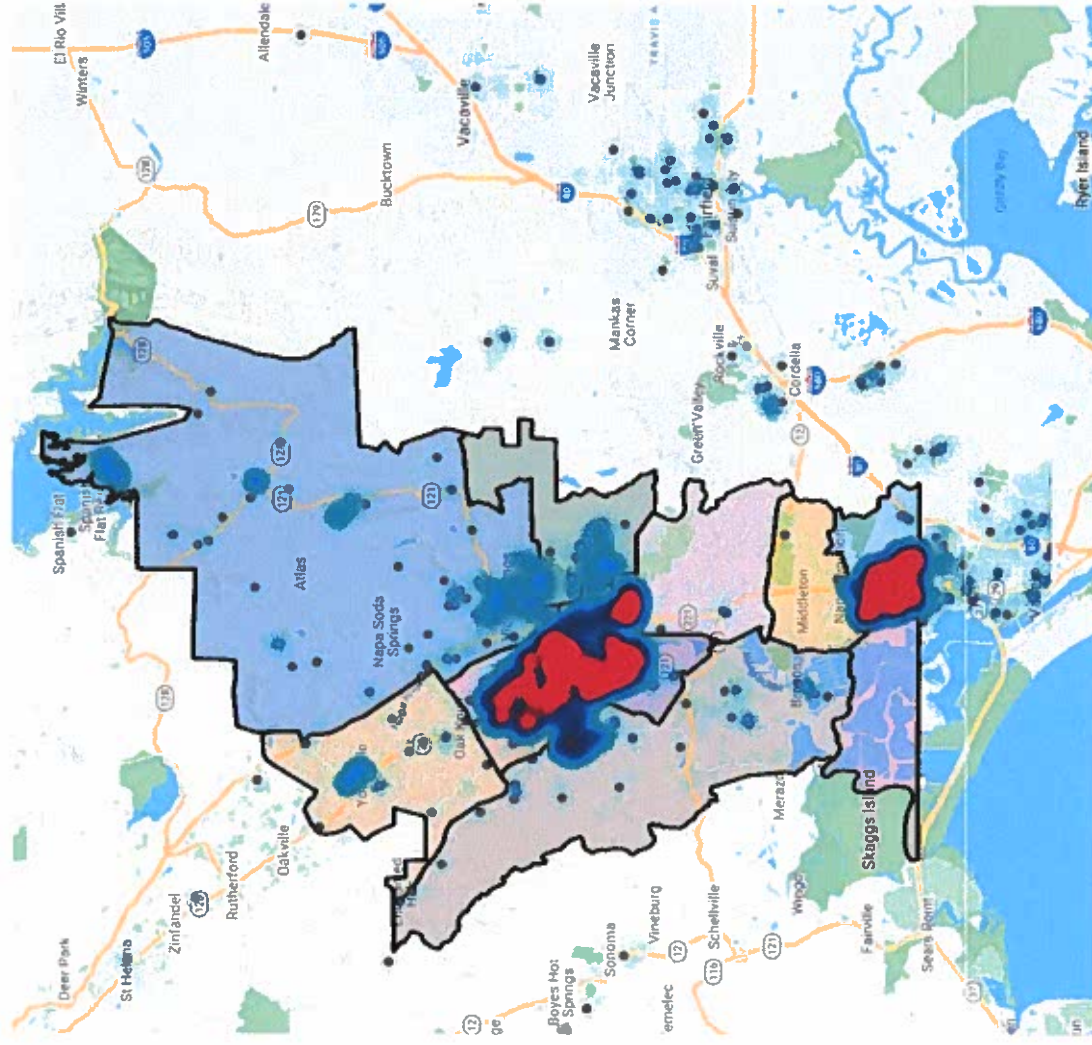
9.17.19

District Boundary

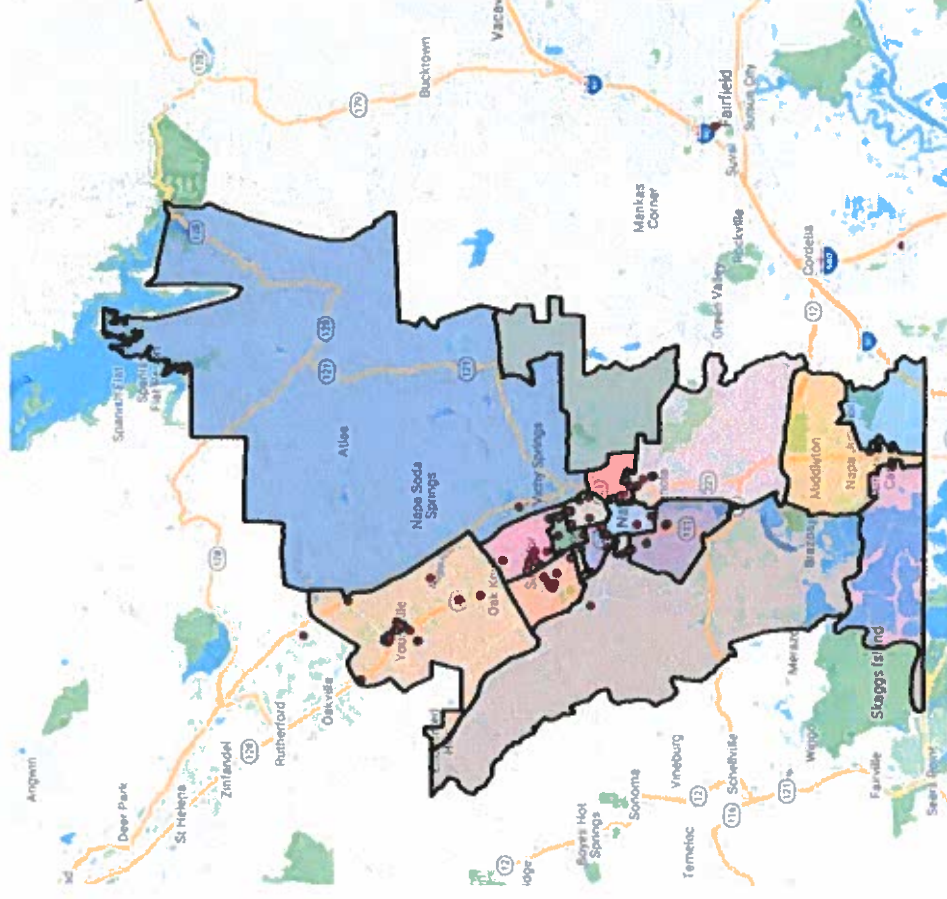


The map displays Travis County, Texas, with a black outline indicating its boundaries. The county is divided into several regions, each labeled with a name: Spanish Flat, Atlas, Napo Soda Springs, Oakville, Yonkers, Meraz, Wingo, and Skaggs Island. Major highways are shown as orange lines with blue shields indicating route numbers (e.g., 12, 17, 21, 23, 27, 30, 36, 39, 40, 42, 45, 49, 50, 52, 54, 56, 58, 60, 62, 64, 66, 68, 70, 72, 74, 76, 78, 80, 82, 84, 86, 88, 90, 92, 94, 96, 98, 100). Major cities and towns are labeled, including El Rio Vista, Winters, Allendale, Bucktown, Vacaville, Elmira, Vacaville Junction, Manitas Corner, Snyal, Fairfield, Sycamore, Green Valley, Rockville, Corbells, Middlebrook, Napo Junction, Brackley, Meraz, Wingo, Skaggs Island, Fairville, Santa Point, Temec, Schellville, Wimborg, Sonoma, Boyers Hot Springs, Zinfandel, Burthorford, Oakville, Yonkers, and Deer Park. The map also shows several water bodies, including Spanish Flat, Atlas, Napo Soda Springs, Oakville, Yonkers, Meraz, Wingo, Skaggs Island, and Santa Point. The distribution of 1,000 randomly generated points is shown as small black dots. The points are most densely clustered in the central and eastern parts of the county, particularly around the Austin area, and more sparsely distributed in the western and northern parts. The points are also more densely clustered in the areas around the major highways and cities.

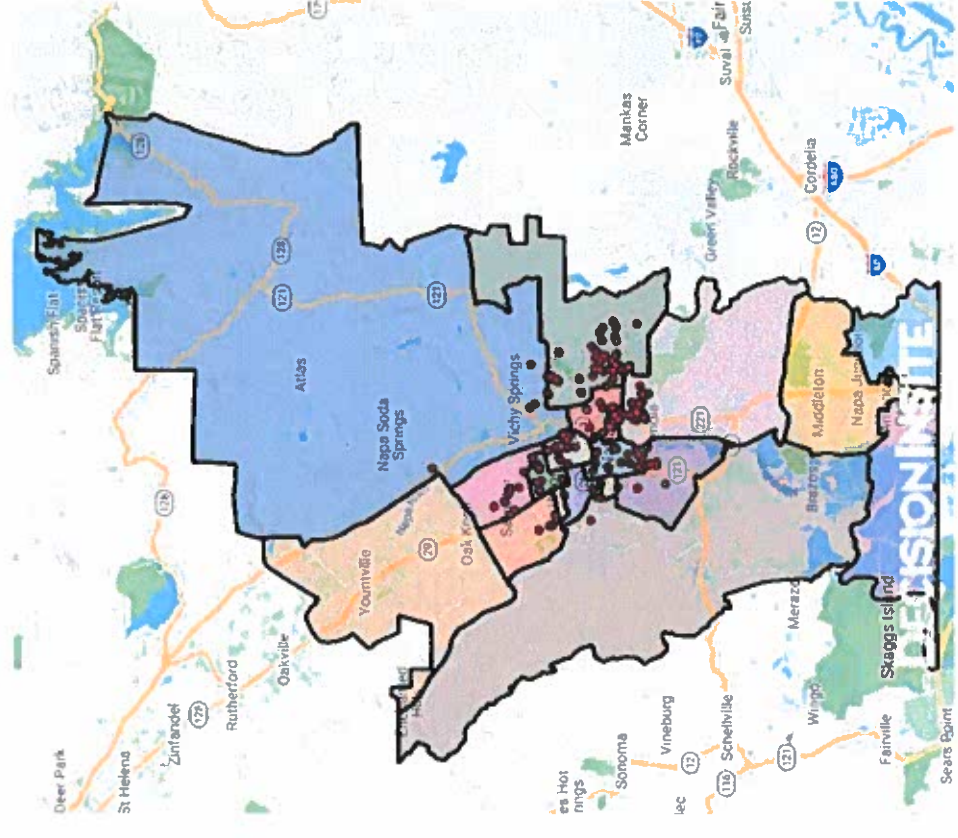




Yountville Elementary School with Students Plotted



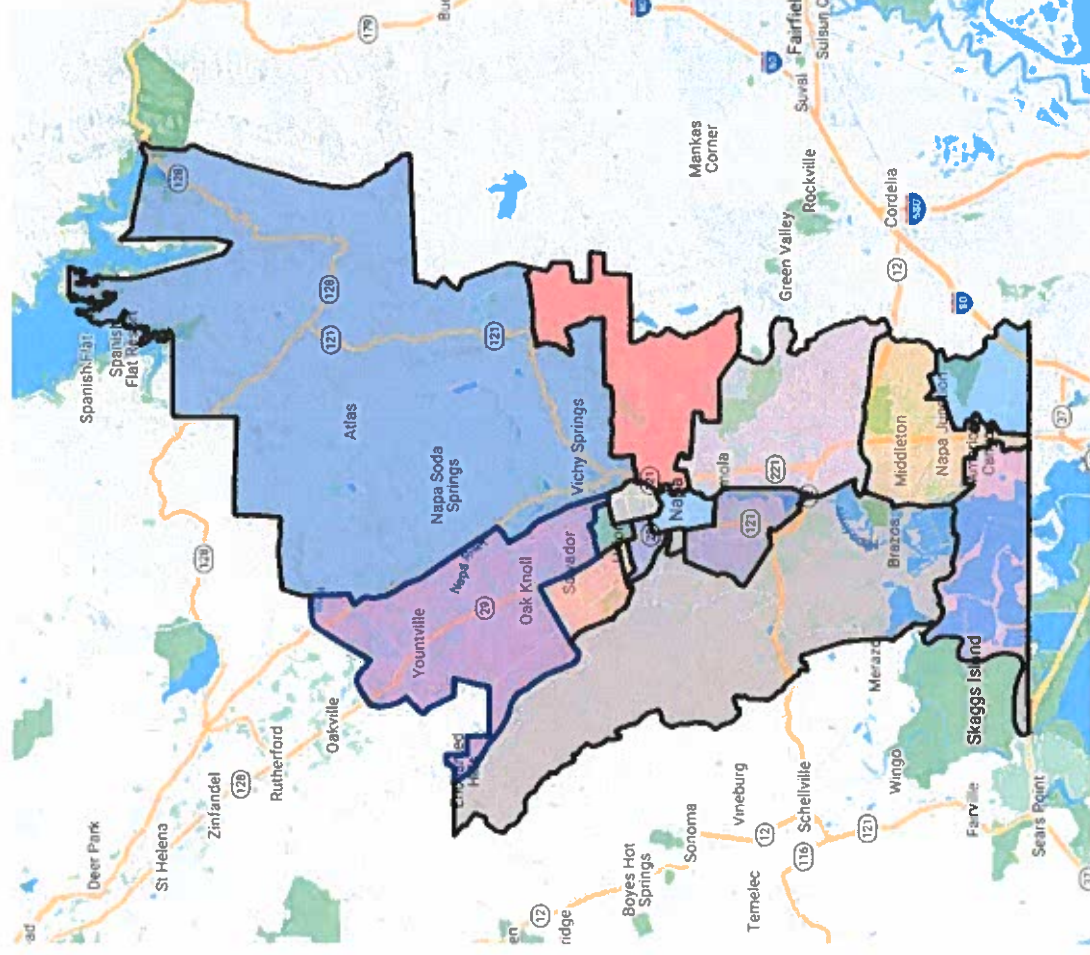
Mt. George Elementary with Students Plotted



Yountville Proposed Boundary

- Yountville and Willow to combine boundaries
- Students that live in the Yountville boundary to become residents of Willow Boundary
- Willow becomes the new home school for resident students of Yountville Elementary

Yountville and Willow Proposed Boundary

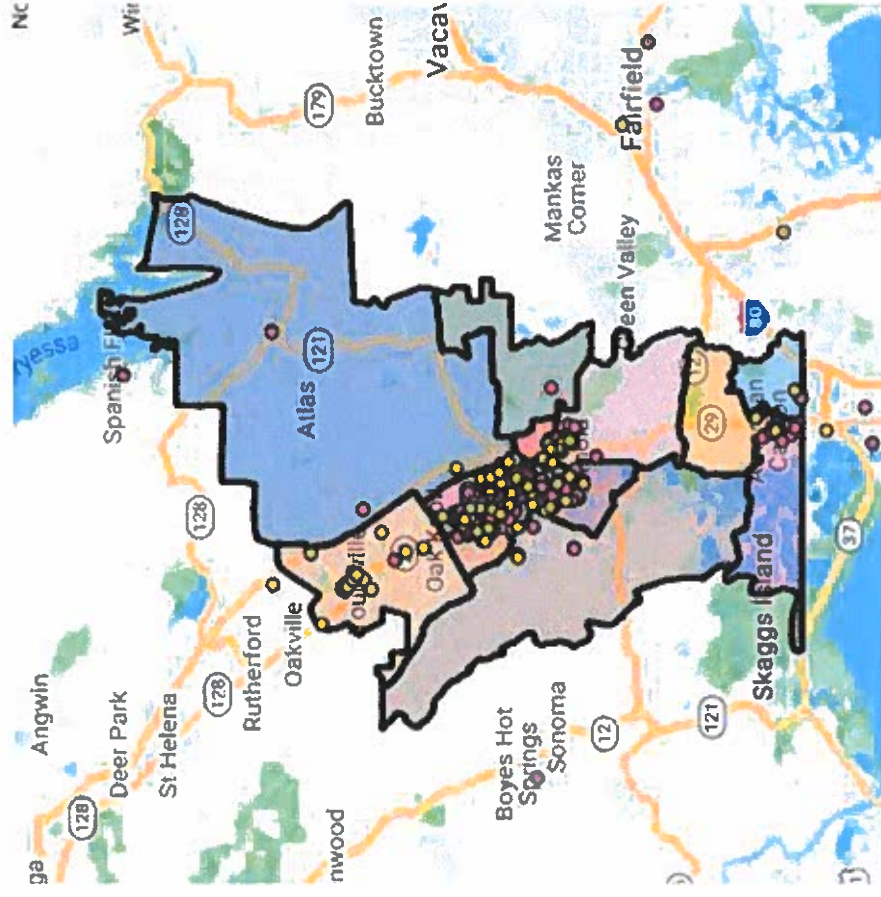


Mt. George Proposed Boundary

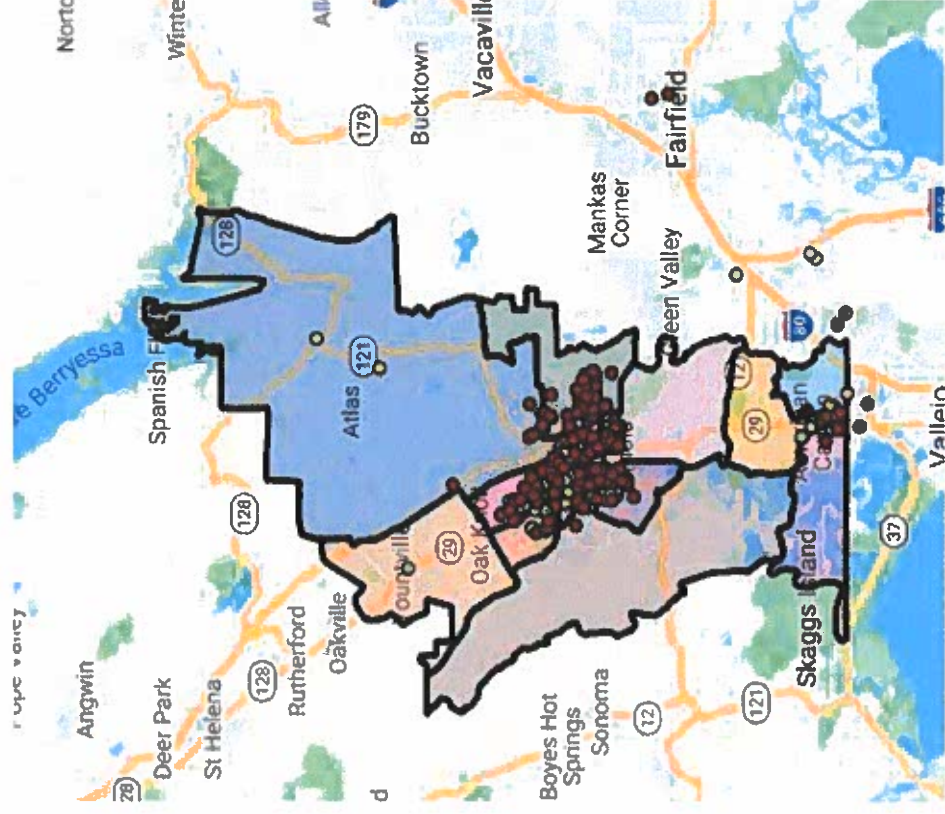
- Mt. George and Alta Heights to combine boundaries
- Students that live in the Mt. George boundary to become residents of Alta Heights
- Alta Heights becomes the new home school for resident students of Mt. George Elementary

[illegible]

Yountville and Willow Students Plotted



Mt. George and Alta Heights Students Plotted



Open Enrollment

