

Twin Rivers Unified

STUDENT HOUSING
COMMITTEE

*BOARD OF TRUSTEES
REPORT*

REPORT

NOVEMBER 5, 2019

BOARD OF TRUSTEES ON COMMITTEE

LINDA FOWLER, J.D.

MICHELLE RIVAS

RAMONA LANDEROS

STUDENT HOUSING COMMITTEE MEMBERS

STACEY BASTIAN

MICHELLE DELEON

DARIO GONZALEZ

VALERIE HANSON

CRYSTAL HARDING

DANETTE McREYNOLDS

DR. MARTY POWERS

SUSANNE UHL

AMANDA WIRZ

DISTRICT STAFF

DR. STEVE MARTINEZ

BILL MCGUIRE

DR. KRISTEN COATES

ROXANNA VILLASENOR

MARK GIUGNI

CONSULTANT

TONY FERRUZZO, DECISIONINSITE

TABLE OF CONTENTS

Purpose of the Student Housing Committee.....	3
Committee Meetings & Timeline.....	4
Committee Recommendations	4
School Configuration from Board	4
School Configuration.....	5
School Consolidation & Closure	5
Meeting Agenda's and Attachments	6
Meeting 1: March 12, 2019.....	6
Meeting 2: March 19, 2019.....	6
Meeting 3: April 2, 2019	6
Meeting 4: April 23, 2019	6
Meeting 5: April 30, 2019	7
Meeting 6: May 14, 2019.....	7
Meeting 7: July 2, 2019	7
Meeting 8: July 16, 2019	7
Meeting 9: July 30, 2019.....	7
Meeting 10: August 13, 2019.....	8
Meeting 11: August 27, 2019.....	8
Meeting 12: September 17, 2019	8
Meeting 13: October 1, 2019.....	8
Meeting 14: October 15, 2019.....	8
Exhibit A Map of Applicants	9
Exhibit B Map of Committee Members	10
Exhibit C Applicant List.....	11
Exhibit D Student Housing Committee Applications Submitted Spreadsheet	12
Exhibit E Capacity Study	13

Purpose of the Student Housing Committee

The purpose of the Student Housing Committee was to review the Board's policy on student housing issues, such as optimal school size, optimal school grade configurations, school consolidation, school boundaries and staffing. The committee will present a report to the Board of Trustees with recommendations. Administration posted on the Student Housing Committee website and also on the main Twin Rivers Unified School District Website that this was an important task and the district was looking for highly-qualified, capable and committed individuals to be members of the committee. The district used the process defined under California law (Education Code sec. 17389) for selection of members to this committee.

- The ethnic, age group and socioeconomic composition of the district;
- The business community, such as store owners, managers, or supervisors;
- Landowners or renters with preference to be given to representatives of neighborhood associations;
- Teachers;
- Administrators;
- Parents of students;
- Persons with expertise in environmental impact, legal contracts, building codes, and land use planning, including, but not limited to, knowledge of the zoning and other land use restrictions of the cities or cities and counties in which surplus space and real property is located were encouraged to apply for the Committee.

Members of the Student Housing Committee served on a voluntary basis. The deadline for applications was Thursday February 21, 2019 at 4:30 PM. The Board of Trustee's approved committee members at the regular [Board Meeting on February 26, 2019](#).

- Exhibit A [Student Housing Committee - Map of Applicants](#)
Exhibit B [Student Housing Committee - Map of Committee Members](#)
Exhibit C [Student Housing Committee Applications List](#)
Exhibit D [Student Housing Committee Applications Submitted Spreadsheet](#)

Committee Meetings & Timeline

The committee was in place by February 26, 2019 and completed its work on October 15, 2019. All committee meetings, proceedings, and deliberations were open to the public. Meetings were scheduled from 5:30 - 7:00 p.m. at the District Office in the Board Room (5115 Dudley Blvd., Bay A, McClellan, CA 95652) as follows:

Tentative Meeting Dates posted on website – Subject to Change

March 12	July 16
March 19	July 30
April 2	August 13
April 23	August 27
April 30	September 17
May 14	October 1
	October 15

It was anticipated that the committee's report would be provided to the Board of Trustees at the Board's first Oct. 2019 meeting, but due to scheduling conflicts, that date was adjusted to a Special Meeting of the Board on November 5, 2019.

On July 2, 2019 the Board of Trustees Approved [Board Policy 7112](#) relative to the future School Configuration's in Twin Rivers Unified School District. The Student Housing Committee meetings to review scenarios that meet the Board approval School Site Configurations and Enrollment Targets

Committee Recommendations

School Configuration from Board

Board Policy 7112 School Capacity Parameters

Exhibit 7112 (1) Student Housing, Elementary School K-6 and K-8

Exhibit 7112 (2) Student Housing, Intermediate School (7-8)

Exhibit 7112 (3) Student Housing, High School (9-12)

School Configuration

The number of students eligible to be housed at a school site based upon the design capacity of permanent facilities per Board Policy 7112

- a. Elementary (Grades K - 6) Schools - 700 students
- b. Elementary (Grade K - 8) Schools - 900 students
- c. Intermediate (Grades 7 - 8) Schools - 1,000 students
- d. Secondary (Grades 9 - 12) Schools - 2,000 students

School Configuration Consolidation & Closure

Summary of the October 15, 2019 Student Housing Committee Vote on the District Administrations Recommendations:

District Administrations Recommendations												
Questions	Yes Total	No Total	Stacey Bastian	Michelle DeLeon	Dario Gonzalez	Valerie Hanson	Crystal Harding	Danette McReynolds	Marty Powers	Susanna Uhl	Amanda Wirz	
Morey Avenue ECDC TK & K to their schools of residence	6	3	No	Yes	Yes	Yes	Yes	No	No	Yes	Yes	
Dry Creek from K-4 to K-6 over two years	9	0	Yes	Yes	Yes	Yes	Yes	Yes	Yes	Yes	Yes	
Orchard Elementary from K-8 to K-6 over two years	8	1	Yes	Yes	Yes	Yes	Yes	Yes	Yes	Yes	No	
Strauch Elementary K-5 to K-6	9	0	Yes	Yes	Yes	Yes	Yes	Yes	Yes	Yes	Yes	
Woodridge Elementary from K-4 to K-6 over two years	9	0	Yes	Yes	Yes	Yes	Yes	Yes	Yes	Yes	Yes	
Foodhill Ranch from 5-8 to 7-8 over two years	9	0	Yes	Yes	Yes	Yes	Yes	Yes	Yes	Yes	Yes	
Rio Linda Prep from 5-8 to 7-8 over two years	9	0	Yes	Yes	Yes	Yes	Yes	Yes	Yes	Yes	Yes	
Rio Tierra from 6-8 to 7-8	9	0	Yes	Yes	Yes	Yes	Yes	Yes	Yes	Yes	Yes	
Close Babcock, Students go to Northwood Elementary	2	7	No	No	No	No	No	No	Yes	Yes	No	
Close Fairbanks, Students go to Del Paso and Castori	2	7	No	No	No	No	No	No	Yes	Yes	No	
Close Hillsdale, Students go to Allison K-6 and Kohler K-8	2	7	No	No	No	No	No	No	Yes	Yes	No	
Close Noralto, Students go to Harmon Johnson and surrounding Schools	3	6	No	No	No	No	No	Yes	Yes	Yes	No	
Close Sierra View, Students go to Village and Ridgepoint	2	7	No	No	No	No	No	No	Yes	Yes	No	
Close MLK, Students go to Rio Tierra 7-8 over two years, Southern Region	4	5	No	Yes	No	No	No	Yes	Yes	Yes	No	
Consolidate Vista Nueva, Pacific and Nova on one campus	4	5	No	Yes	No	No	No	Yes	Yes	Yes	No	
Move Smythe 7-8 to MLK in 2021-22 School year	3	6	No	No	No	No	No	Yes	Yes	Yes	No	
Move Eastside WPCS from Hillsdale to Allison	3	6	No	No	No	No	No	Yes	Yes	Yes	No	

Board Members did not participate in the vote.

Meeting Agenda's and Attachments

Meeting 1: March 12, 2019

[Agenda](#)
[Student Housing Committee Presentation](#)
[Twin Rivers Enrollment Spreadsheet](#)
[Navigating the Gray Haze of the Brown Act Document](#)
[School Grade Level Configuration Spreadsheet](#)
[Sample Board Policies](#)
[Draft of the School Site Capacity Study](#)

Meeting 2: March 19, 2019

[Agenda](#)
[Meeting Minutes 3/12/2019](#)
[Attendance Requirements](#)
[School Districts in Sacramento County and School Configuration](#)

[2018-2019 Procedure for Overflow Student](#)
[TRUSD Housing & Population Demographics & Enrollment PowerPoint](#)
[Student Housing Committee Presentation](#)

Meeting 3: April 2, 2019

[Agenda](#)
[Meeting Minutes 3/19/2019](#)
[2019-20 Staffing Handbook & Staffing Handout](#)
[SBAC & Chronic Absenteeism](#)
[Attendance Reports](#)
[California Healthy Kids - by School](#)
[Program Elements](#)
[Special Education Class Locations](#)
[Map of Boundaries - Updated PowerPoint](#)
[School Size Scenarios](#)
[Survey Results & Handouts](#) (e-version only)

Meeting 4: April 23, 2019

[Agenda](#)
[Meeting Minutes 4/2/2019](#)
[Master Plan Update](#)
[Site Utility Analysis](#)
[Review of Information on Charts](#)

[Sample Policy Language on Configuration and Size](#)
[Cancel SHC Meetings Proposal](#)

Meeting 5: April 30, 2019

[Agenda](#)
[Meeting Minutes 4/23/2019](#)
[Elverta & Robla Enrollment](#)
[Review of Dot Exercise from April 23rd Meeting](#)

Meeting 6: May 14, 2019

[Agenda](#)
[Meeting Minutes 4/30/2019](#)
[Review of Charts from 4/30/2019](#)
[Student Housing Committee Report for the Board of Trustees](#)
[Student Housing FAQ](#)
[School Site - Capacity Analysis DRAFT](#)

Meeting 7: July 2, 2019

Board of Trustees : [Board Policy](#)

Meeting 8: July 16, 2019

[Agenda](#)
[Meeting Minutes 5/14/2019](#)
Oakland Unified School [Article](#)
Review of Board of Trustees July 2, 2019 Meeting : [Board Policy](#)
[Capacity Study Report](#)
[Next Steps & Process of Student Housing Committee - DecisionInsite](#)

Meeting 9: July 30, 2019

[Agenda](#)
[Meeting Minutes 7/16/2019](#)
[Parkebridge Homes - Update](#)
[Intra District Out & In by School](#)
[Initial Boundary Analysis for Elementary Schools - DecisionInsite](#)
[Revised Version](#)
[FAQs Possible School Closures](#)

Meeting 10: August 13, 2019

[Agenda](#)

[Grade Level and Boundary Reconfiguration Study Scenario 1 - DecisionInsite](#)

[Grade Level and Boundary Reconfiguration Study Scenarios 2 & 3 DecisionInsite](#)

Meeting 11: August 27, 2019

[Agenda](#)

[Meeting Minutes 8/13/2019](#)

[Communication Relative to Student Housing Committee](#)

[Grade Level and Boundary Reconfiguration Study & Charter and Alternatives](#)

[Review of FAQ's](#)

[Next Steps](#)

Meeting 12: September 17, 2019

[Agenda](#)

[Meeting Minutes 8/27/2019](#)

[Follow-up Information - Part 1 Attached](#)

[Follow-up Information - Part 2 Provided at Meeting](#)

[DecisionInsite - Scenario Four - Provided at Meeting](#)

[Ratings of Scenarios for Twin Rivers Unified](#) 5 to 10 years from now -Committee

Scenario Recommendations not considered in 1 through 4 - Committee

Meeting 13: October 1, 2019

[Agenda](#)

[Meeting Minutes 9/17/2019](#)

[District Administration Recommended Scenario Five](#)

Discussion for Recommendation to Board of Trustees

Meeting 14: October 15, 2019

[Agenda](#)

[Meeting Minutes 10/1/2019](#)

[Meeting Minutes Revised 9/17/2019](#)

[Update on Information Requested](#)

[Unofficial Minutes from October 15th Meeting](#)

Exhibit A

Map of Applicants

Student Housing Committee – Map of Applicants

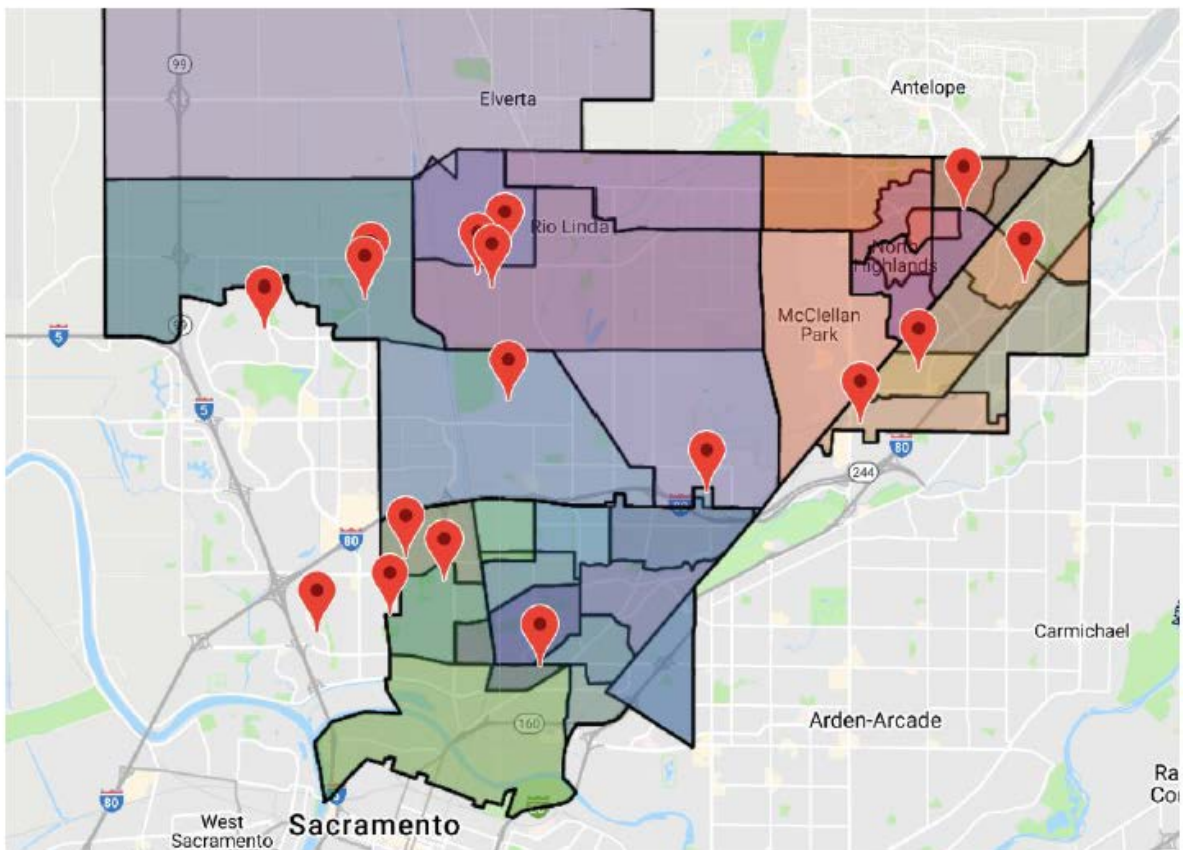


Exhibit B

Map of Committee Members

Student Housing Committee – Map of Committee Members

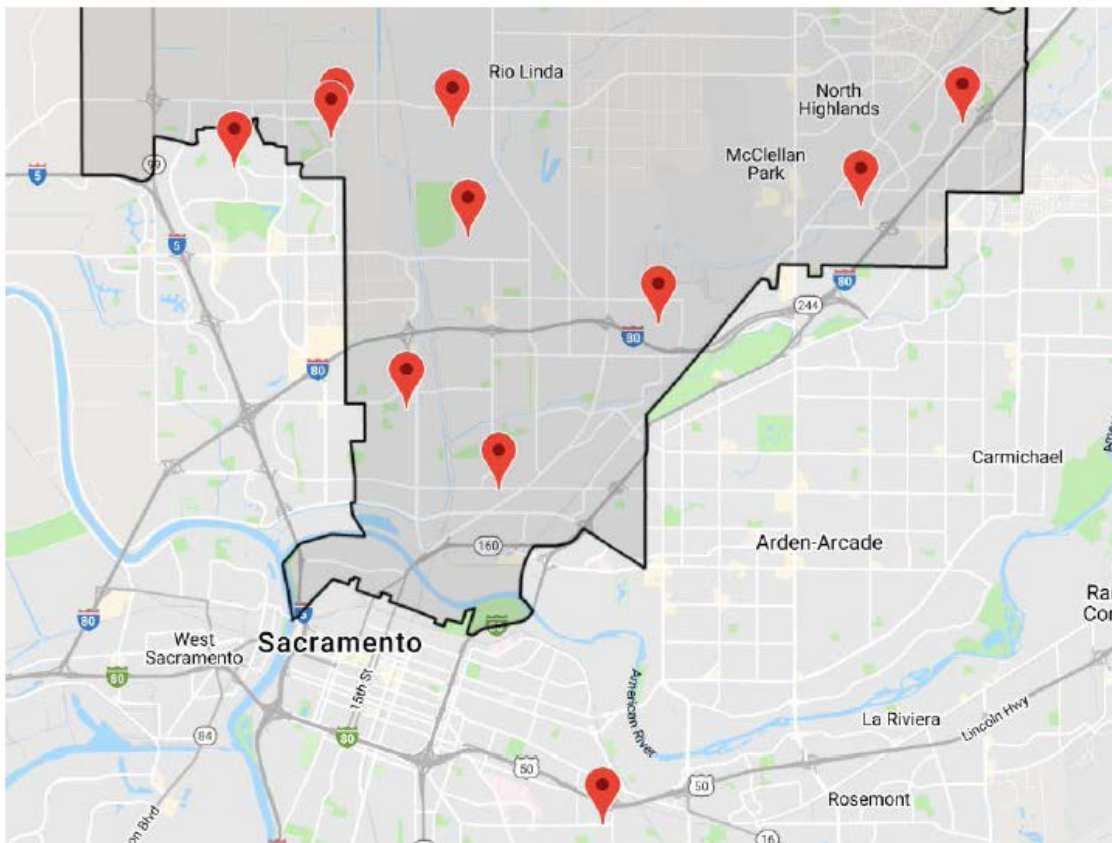


Exhibit C

Applicant List

Student Housing Committee Applications

1	Susanne Uhl
2	Amanda Wirz
3	Kimberly Gunter
4	Jessica Hilderbrand
5	Valerie Hanson
6	Gabriel Loggins
7	Kelly Burnett
8	Michelle Deleon
9	Frances Huizar
10	Daniel Savala
11	Stacey Elizabeth Bastian
12	Yesenia Sandoval Lopez
13	Kimberle Danette McReynolds
14	Jason Sample
15	Dario Gonzalez
16	Jamie Manalo
17	Brenda Ruiz
18	Roxanna Villasenor
19	Marty Powers
20	Crystal Harding
21	Doug Emerson
22	Maria Elena Sepulveda

Exhibit D

Student Housing Committee Applications Submitted Spreadsheet

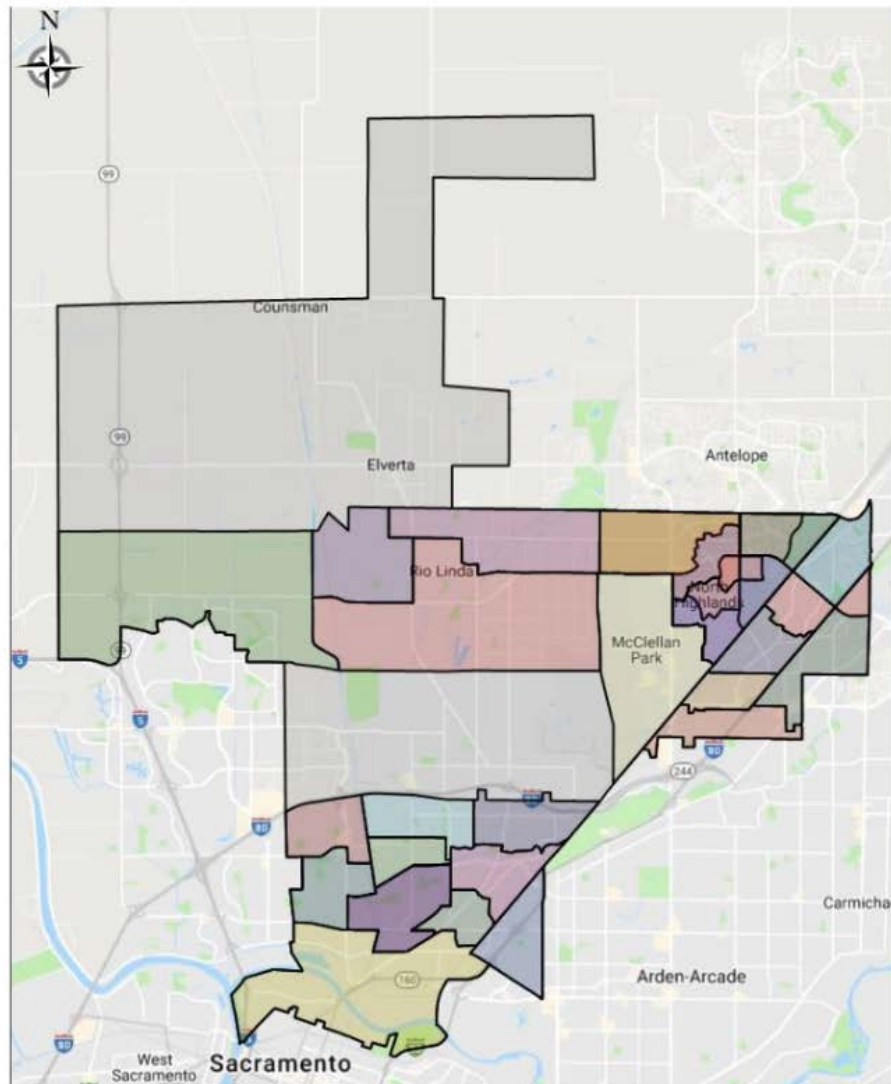
Student Housing Committee Members

Applications Submitted

Number	Date Submitted	Fname	Lname	City	State	Zip	Business Community Member	Landowner or Renter	Teacher Administrator	Parent Guardian	Person with expertise
1	1/31/2019	Susanne	Uhl	Sacramento	CA	95842		✓			✓
2	2/5/2019	Amanda	Wirz	North Highland	CA	95660		✓	✓		
3	2/6/2019	Kimberly	Gunter	Rio Linda				✓	✓		
4	2/6/2019	Jessica	Hilderbrand	Roseville	CA	95678			✓		✓
5	2/6/2019	Valerie	Hanson	Sacramento	CA	95835			✓		
6	2/7/2019	Gabriel	Loggins	Sacramento	CA	95834		✓	✓		✓
7	2/12/2019	Kelly	Burnett	Lincoln	CA	95747			✓		
8	2/12/2019	Michelle	Deleon	Sacramento	CA	95835		✓		✓	
9	2/19/2009	Frances	Huizar	Sacramento	CA	95833		✓			
10	2/20/2019	Daniel	Savala	Sacramento	CA	95815					✓
11	2/20/2019	Stacey Elizabeth	Bastian	Rio Linda	CA	95673	✓	✓			✓
12	2/20/2019	Yesenia	Sandoval Lopez	Sacramento	CA	95833	✓	✓		✓	
13	2/20/2019	Kimberle "Danet"	McReynolds	Sacramento	CA	95838		✓		✓	
14	2/20/2019	Jason	Sample	Sacramento	CA	95835		✓		✓	
15	2/20/2009	Dario	Gonzalez	Sacramento	CA	95838		✓	✓	✓	
16	2/20/2019	Jamie	Manalo	Rio Linda	CA	95673		✓		✓	
17	2/21/2019	Brenda	Ruiz	Sacramento	CA	95833		✓	✓	✓	✓
18	2/21/2019	Roxanna	Villasenor	Elk Grove	CA	95757			✓		
19	2/21/2019	Marty	Powers	Sacramento	CA	95820			✓		
20	2/21/2019	Crystal	Harding	Sacramento	CA	95842				✓	
21	2/21/2019	Doug	Emerson	Roseville	CA	95661			✓		
22	2/21/2019	Maria Elena	Sepulveda	North Highland	CA	95660		✓		✓	
Total							2	14	11	9	6

Twin Rivers Unified

ELEMENTARY SCHOOL BOUNDARIES



Twin Rivers Unified

ALLISON ELEMENTARY



Twin Rivers Unified

ALLISON ELEMENTARY



ABBREVIATIONS:

A	ADMINISTRATION
C	CLASSROOM
K	KINDERGARTEN
MP	MULTI-PURPOSE
L	LIBRARY
PC	PORTABLE CLASSROOM
PR	PORTABLE RESTROOM
R	RESTROOM

Twin Rivers USD
2018-19 Capacity Analysis
Allison Elementary School (PreK-6)

Allison Elementary School (PreK-6)												
Room #	TRUSD Capacity				State Capacity		Teacher	Total Sq. Ft.	TRUSD Capacity Calculations			
	Preschool - TK	K	1-3	Room Type	4-8	SDC - Mild			SDC - Severe	Grade	Students / Rm.	Subtotal
K1		1					1	Loeffler	1,228			
K2		1					1	Perry	1,228	Preschool - TK	0	
K3						1		Romeo	960	Students / Rm.	23	
4					1		1	Fiddler/Lahey	1,200	Subtotal	0	
5		1			1		1	Johnson	960			
8			1		1		1	Espinoza	1,200	K	3	
9			1		1		1	Tarango	960	Students / Rm.	20	
10			1		1		1	Morgan	960	Subtotal	60	
11			1		1		1	Fong	960			
12				1	1		1	Drahmann	1,200	1-3	7	
13				1	1		1	Zacharias	960	Students / Rm.	25	
14				1	1		1	Brown	960	Subtotal	175	
15			1		1		1	Merlo	960			
16				1	1		1	Tanigawa	1,200	4-8	5	
17				1	1		1	Anderson	960	Students / Rm.	30	
18			1		1		1	Foster,	960	Subtotal	150	
19			1		1		1	Marchi-Wagner	960			
20					1		1	Rogers	360	SDC - Mild	3	
21					1		1	Hanson	600	Students / Rm.	15	
22					1		1	Caywood	816	Subtotal	45	
23					1		1	unassigned	144			
24					1		1	Thomas	960	SDC - Severe	0	
Totals:		0	3	7	5	3	0			Students / Rm.	12	
									Subtotal			0
												22

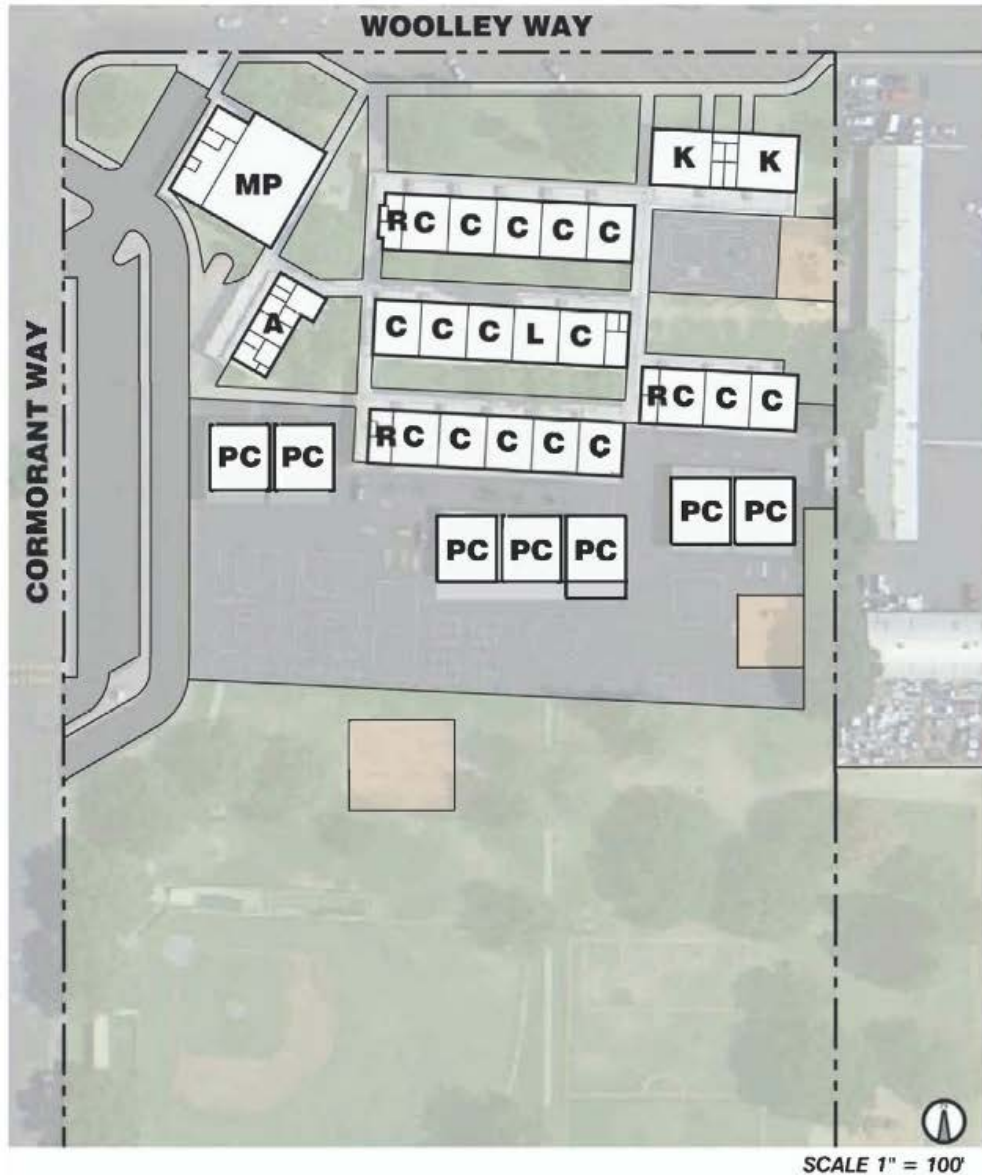
State Capacity Calculations			
K-6, w/o Spec. Ed.	15		
Students / Rm.	25		
Subtotal	375		
Spec. Ed. - Non-Severe	3	State Capacity	
Students / Rm.	13	2018-2019	
Subtotal	39		414
Spec. Ed. - Severe	0		
Students / Rm.	9		
Subtotal	0		

Twin Rivers Unified

BABCOCK ELEMENTARY



BABCOCK ELEMENTARY



ABBREVIATIONS:

A	ADMINISTRATION
C	CLASSROOM
K	KINDERGARTEN
MP	MULTI-PURPOSE
L	LIBRARY
PC	PORTABLE CLASSROOM
PR	PORTABLE RESTROOM
R	RESTROOM

Twin Rivers USD
2018-19 Capacity Analysis

Babcock Elementary School (PreK-6)

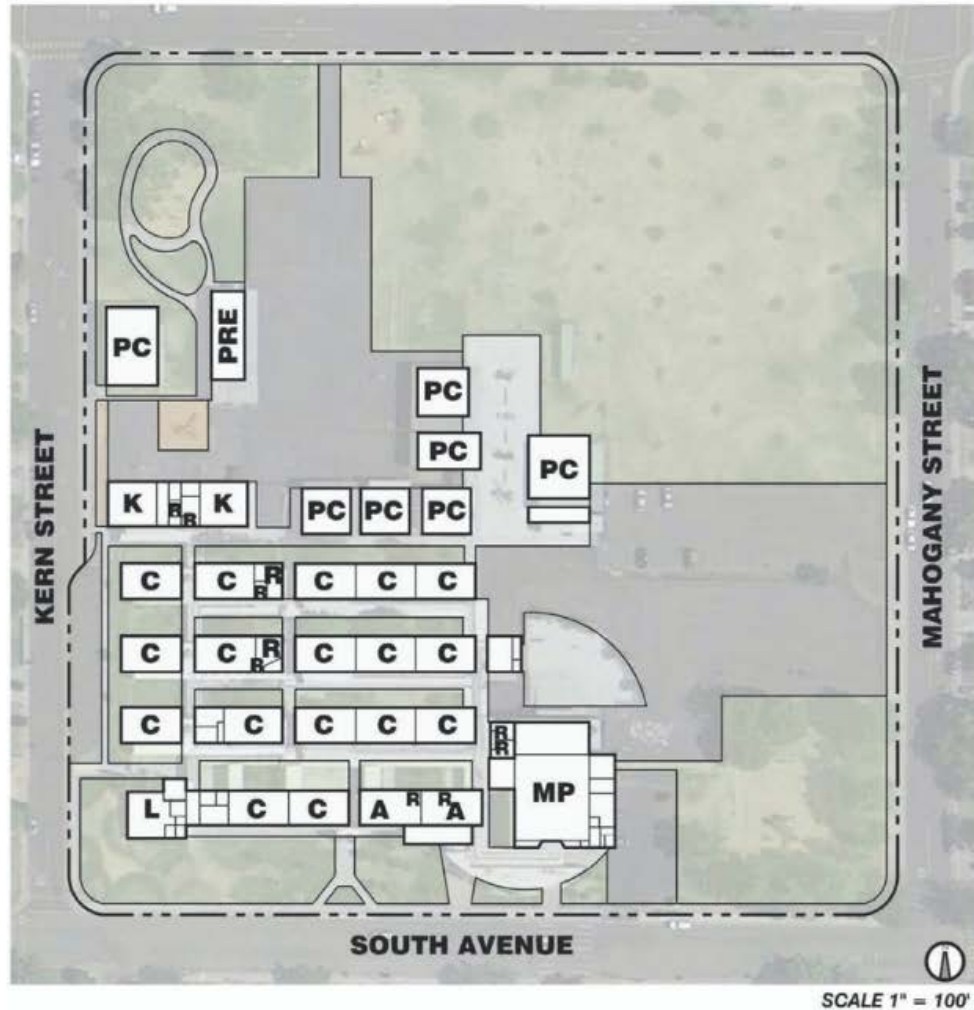
Room #	Preschool - TK	K	TRUSD Capacity Room Type			Gross CR		State Capacity		Teacher	Grade	Total Sq. Ft.	Babcock Elementary School (PreK-6)		
			1-3	4-8	SDC - Mild	SDC - Severe	Inventory	Permanent	Portable				TRUSD Capacity Calculations		
6			1				1	1		Cornwell	3rd	908			
7			1				1	1		Nole	3rd	908	Preschool - TK	0	
8				1			1	1		Venegas	6th	908	Students / Rm.	23	
9				1			1	1		Duong	6th	908	Subtotal	0	
10				1			1	1		Marengo	5th	908			
11		1					1	1		Dahlem	K	1,496	K	3	District Capacity
12		1					1	1		Graves	K	1,496	Students / Rm.	20	2018-2019
13				1			1	1		unassigned	Staff Lounge	908	Subtotal	60	
14				1			1	1		Bartos	5th	908			780
15				1			1	1		unassigned	Book/Art/PD Library	908	1-3	6	
16				1			1	1		unassigned		908	Students / Rm.	25	
17				1			1	1		Hanson	4th	908	Subtotal	150	
23					1		1	1		Milton	SDC, K-2, Autism	908			
24		1					1	1		Finn	TK & K	908	4-8	17	
25					1		1	1		Schuster	SDC, K-2, Autism	908	Students / Rm.	30	
26				1			1	1		unassigned	Psych, AIS-B & EL-Para	720	Subtotal	510	
27				1			1	1		Ghansah	RSP	720			
28				1			1	1		Boyd	Speech	720	SDC - Mild	4	
29				1			1	1		Harrell	RSP	720	Students / Rm.	15	
33				1			1	1		Adamson	5th	908	Subtotal	60	
34		1					1	1		Meyer	2nd	908			
35		1					1	1		Bachelder	2nd	908	SDC - Severe	0	
36		1					1	1		Cavalari	1st	908	Students / Rm.	12	
37		1					1	1		Ulrich	1st	908	Subtotal	0	
38					1		1	1		Hetsel	SDC, 1st & 2nd, Autism	720			
39				1			1	1		unassigned	After School	720			
40				1			1	1		unassigned	PBIS Game Room	720			
41				1			1	1		unassigned	After School	720	K-6, w/o Spec. Ed.	26	
42							1	1		Contreras/Haugen	Preschool	1,152	Students / Rm.	25	
43							1	1		Contreras/Haugen	Preschool	1,152	Subtotal	650	
44					1		1	1		Barrett	SDC, 4th - 6th, Autism	720			
45				1			1	1		unassigned	PT	720	Spec. Ed. - Non-Severe	4	
Totals:	0	3	6	17	4	0	32	20	12				Students / Rm.	13	State Capacity
						30			32				Subtotal	52	2018-2019
													Spec. Ed - Severe	0	
													Students / Rm.	9	
													Subtotal	0	702

Twin Rivers Unified

CASTORI ELEMENTARY



CASTORI ELEMENTARY



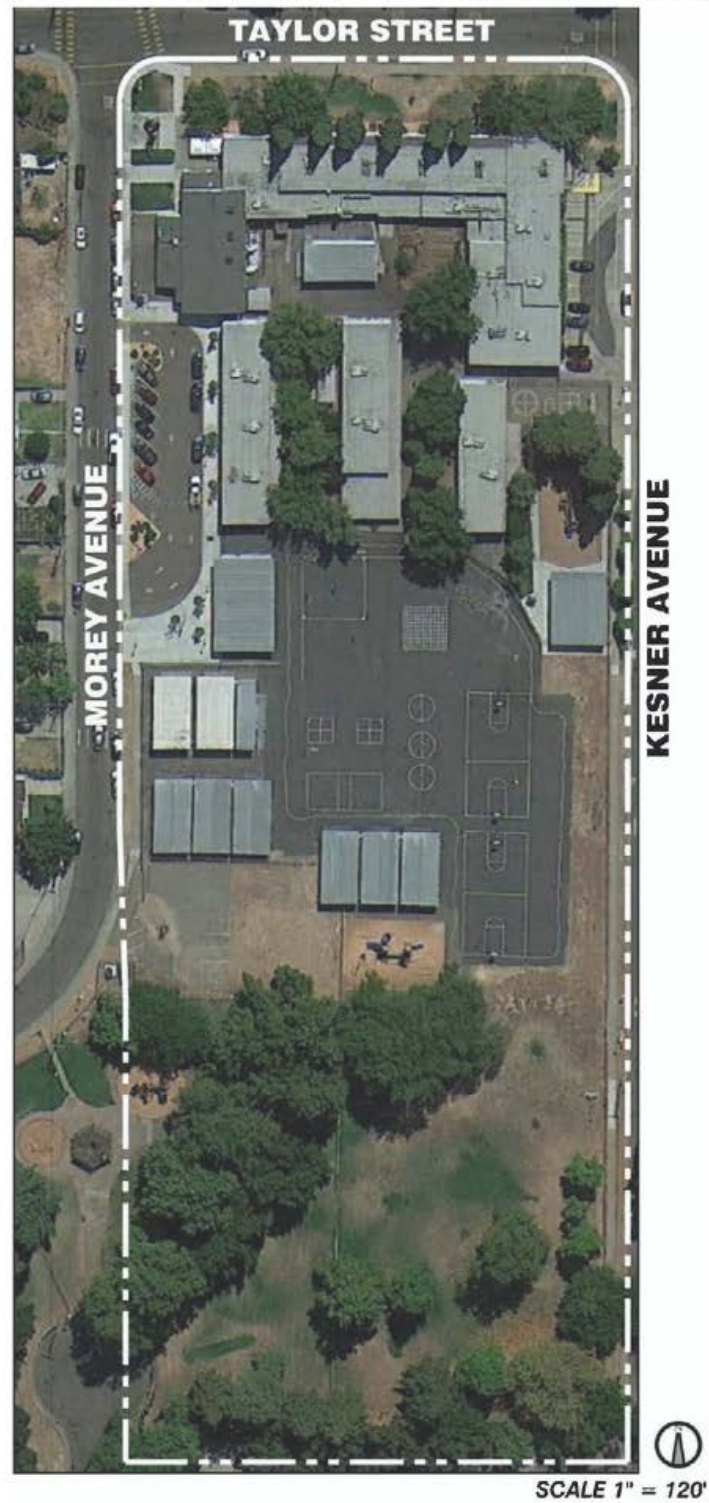
**Twin Rivers USD
2018-19 Capacity Analysis**

Castori Elementary School (Prek-6)						
Room #	TRUSD Capacity Room Type			State Capacity		Total Sq. Ft.
	Preschool – TK	K	1-3	Gross CR Inventory	Permanent	
2		1	1	1	1	908
3		1	1	1	1	908
5		1	1	1	1	908
6		1	1	1	1	908
7		1	1	1	1	908
8		1	1	1	1	908
9			1	1	1	908
10		1	1	1	1	908
11		1		1	1	908
12			1	1	1	908
13			1	1	1	908
14			1	1	1	908
15			1	1	1	908
16	1			1	1	908
17		1	1	1	1	908
18		1	1	1	1	908
19		1		1	1	908
20	1			1	1	1,440
21	1			1	1	1,320
22			1	1	1	1,280
23			1	1	1	960
24		1	1	1	1	960
25			1	1	1	960
26		1		1	1	960
27			1	1	1	960
28				1	1	960
29	1			1	1	960
30				1	1	960
31				1	1	960
32			1	1	1	960
33			1	1	1	960
Totals: 0 4 13 11 31 19 12 31						

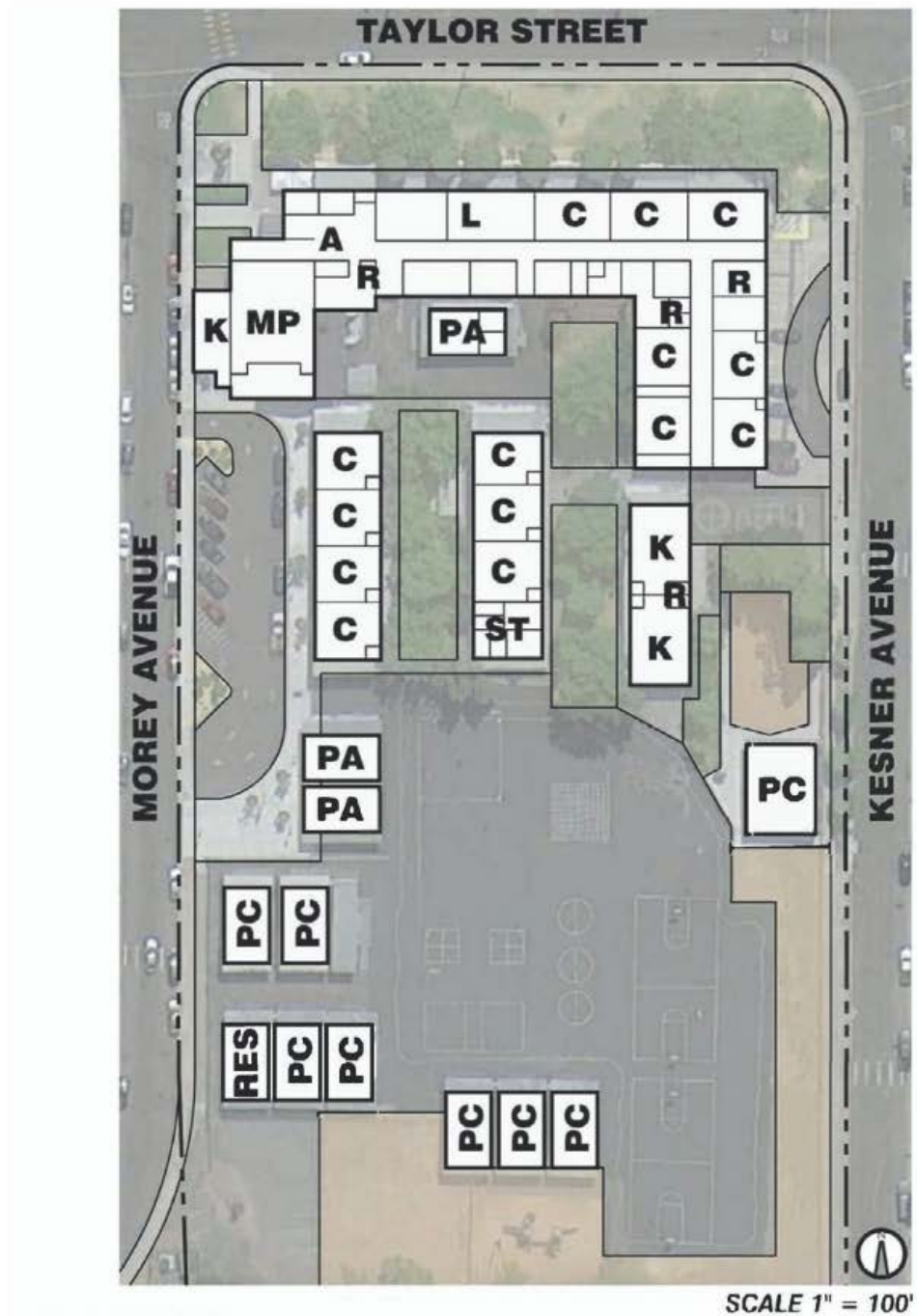
TRUSD Capacity Calculations				State Capacity Calculations			
Preschool - TK	TK	0	0	K-6, w/o Spec. Ed.	Spec. Ed.	28	State Capacity
Students / Rm.	Rm.	23	25	Students / Rm.	Rm.	25	2018-2019
Subtotal		0	700	Subtotal		700	

Teacher	Grade	Parent Room/Para Educators	TRUSD Capacity Calculations	State Capacity Calculations
Ramirez	1st	Donovan	K 4	K-6, w/o Spec. Ed. 28
Evans	2nd	unassigned	Students / Rm. 20	Students / Rm. 25
Shingara	1st	Williams	Subtotal 80	Subtotal 700
Vang	2nd	Nguyen	908	
Corey	2nd	keehn	908	
	1st	Moua	1-3 13	
	3rd	Phillips	Students / Rm. 25	
	4th	Sr. Anant	Subtotal 325	
	4th	Travis	908	
	2nd	Jones	4-8 11	
	K	Pasos	Students / Rm. 30	
	3rd	Moak	Subtotal 330	
	3rd	Sanchez	908	
	K	Smith	1,440	
	K	Smith	1,320	
	RSP	unassigned	1,280	
SST/Masters		Ridley	960	
5th	5th	Brown	960	
5th	5th	Corey	960	
2nd	2nd	Goyeau	960	
6th	6th	Carlson	960	
TK	TK	Buksh	960	
K	K	Bennett	960	
Preschool	Preschool	Mani	960	
6th	6th	Johnston	960	
		Guthner	960	

DEL PASO HEIGHTS ELEMENTARY



DEL PASO HEIGHTS ELEMENTARY



Twin Rivers USD
2018-19 Capacity Analysis

Del Paso Heights Elementary School (PreK-6)

Room #	TRUSD Capacity					State Capacity		Gross CR Inventory	SDC - Mild	SDC - Severe	Teacher	Grade	Total Sq. Ft.	TRUSD Capacity Calculations		
	Preschool - TK	K	1-3	4-8	Room Type	Permanent	Portable							Preschool - TK	Students / Rm.	Subtotal
2								1	1		Vogeli	SDC	828		0	
3			1			1		1			Yang	3rd	828		23	
4			1			1		1			Moore	1st	828		0	
5				1		1		1			unassigned	2nd	815			
7			1			1		1			Kampmann	K	860		2	
8		1				1		1			Grant	2nd	860		20	
9			1			1		1			Caldwell	1st	860		40	
10			1			1		1			Casetta/Telles	K	1,363			
11		1				1		1			DiStefano	1st	1,363		9	
12			1			1		1			Garcia	3rd	928		25	
13			1			1		1			Luchena	4th	928		225	
14				1		1		1			Rusine	4th	928			
15				1		1		1			Cortright	SDC	960		12	
16						1		1			Wood	3rd	960		30	
17			1			1		1			Berger	3rd	960		360	
18			1			1		1			Davilla	RSP	960			
19				1		1		1			McBeth	PreK	1,440		2	
20						1		1			Roes	4th	960		15	
22				1		1		1			Kipler	5th	960		30	
23				1		1		1			Wilson	6th	960			
28				1		1		1			Gathing	6th	960		0	
29				1		1		1			Xiong	5th	960		12	
30				1		1		1			unassigned	5th	960		0	
31				1		1		1			Phung	5th	960			
32				1		1		1			Schmiegel	ASES/The Center Office	960			
33				1		1		1			unassigned		960			
Totals:														State Capacity Calculations		
														K-6, w/o Spec. Ed.		
														Students / Rm.		
														Subtotal		
														Spec. Ed. - Non-Severe		
														Students / Rm.		
														Subtotal		
														Spec. Ed. - Severe		
														Students / Rm.		
														Subtotal		
														State Capacity		
														2018-2019		
														601		

Twin Rivers Unified

DRY CREEK ELEMENTARY



DRY CREEK ELEMENTARY



ABBREVIATIONS:

- A ADMINISTRATION
- C CLASSROOM
- K KINDERGARTEN
- MP MULTI-PURPOSE
- L LIBRARY
- PC PORTABLE CLASSROOM
- PR PORTABLE RESTROOM
- R RESTROOM

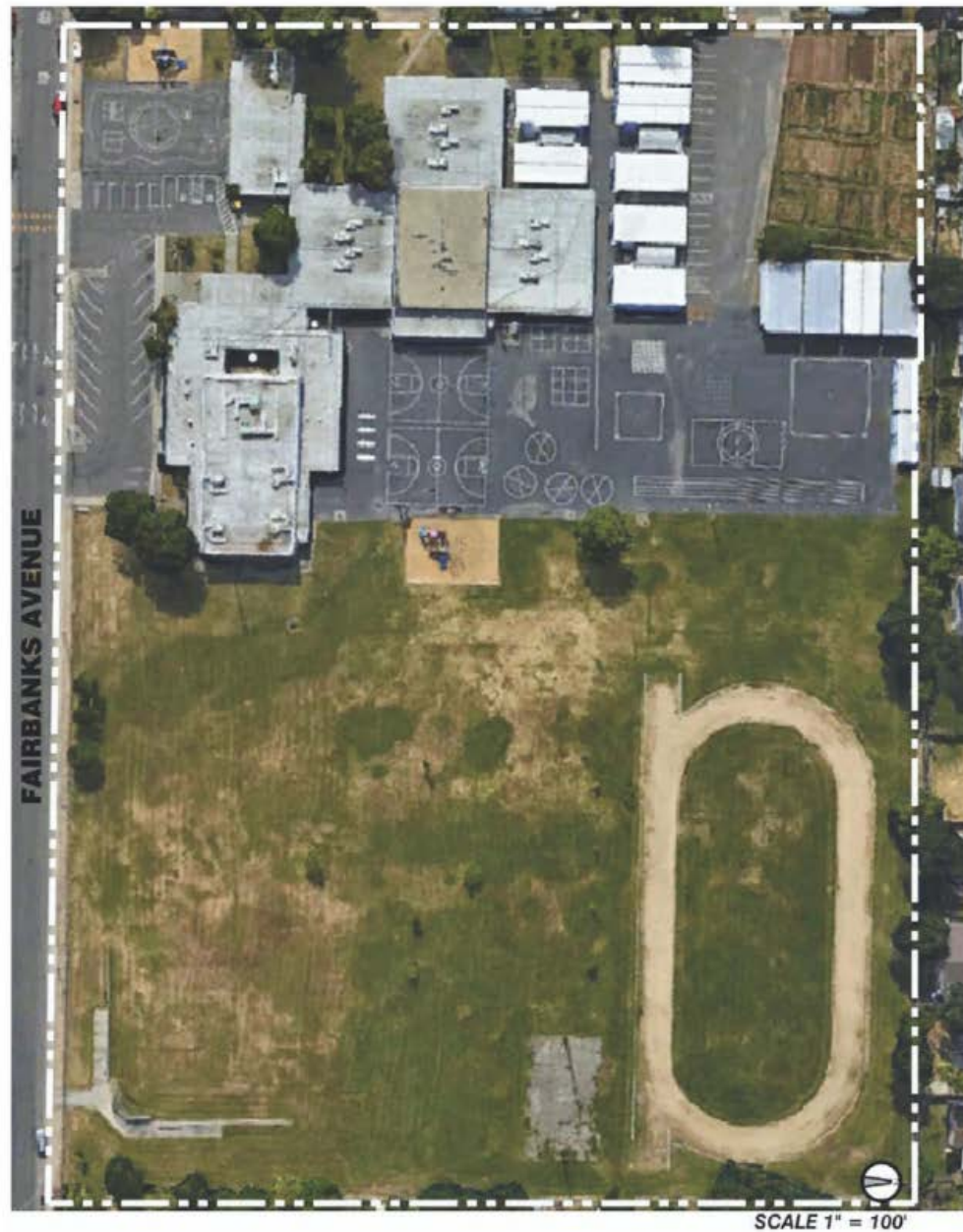
Twin Rivers USD
2018-19 Capacity Analysis

Dry Creek Elementary School (PreK-4)

Room #	TRUSD Capacity				Gross CR		State Capacity		Teacher	Grade	Total Sq. Ft.	Dry Creek Elementary School (PreK-4)			
	Preschool - TK	K	1-3	4-8	SDC - Mild	SDC - Severe	Inventory	Permanent	Portable			TRUSD Capacity Calculations			
K1		1					1	1		K	1,396				
K2		1					1	1		K	1,396				
K3							1	1		TK	935	Preschool - TK 0			
4	1						1	1		K	935	Students / Rm. 23			
5							1	1		K	935	Subtotal 0			
6			1				1	1		1st	935				
7			1				1	1		1st	935				
8		1					1			K	960	District Capacity			
9							1			Price	960	Students / Rm. 20			
10							1			SDC	600	Subtotal 80			
12			1				1			SDC	960	2018-2019			
13			1				1			1st & 2nd	945	450			
14			1				1			Moore	945				
15			1				1			2nd	945				
16			1				1			Myers	945				
17			1				1			Proud	945				
20			1				1			2nd	945				
21			1				1			1st	945				
22			1				1			Scoggins	945				
23			1				1			2nd	945				
24			1				1			Eison	945				
Totals:	0	4	10	4	0	0	21	16	5	21	1,140				
												State Capacity Calculations			
												K-6, w/o Spec. Ed. 18			
												Students / Rm. 25			
												Subtotal 450			
												Spec. Ed. - Non-Severe 0			
												Students / Rm. 13			
												Subtotal 0			
												State Capacity			
												2018-2019			
												Spec. Ed. - Severe 0			
												Students / Rm. 9			
												Subtotal 0			
												450			

Twin Rivers Unified

FAIRBANKS ELEMENTARY



FAIRBANKS ELEMENTARY



ABBREVIATIONS:

A	ADMINISTRATION
C	CLASSROOM
K	KINDERGARTEN
MP	MULTI-PURPOSE
L	LIBRARY
PC	PORTABLE CLASSROOM
PR	PORTABLE RESTROOM
R	RESTROOM
ST	STORAGE

Twin Rivers USD
2018-19 Capacity Analysis

Fairbanks Elementary School (K-6)

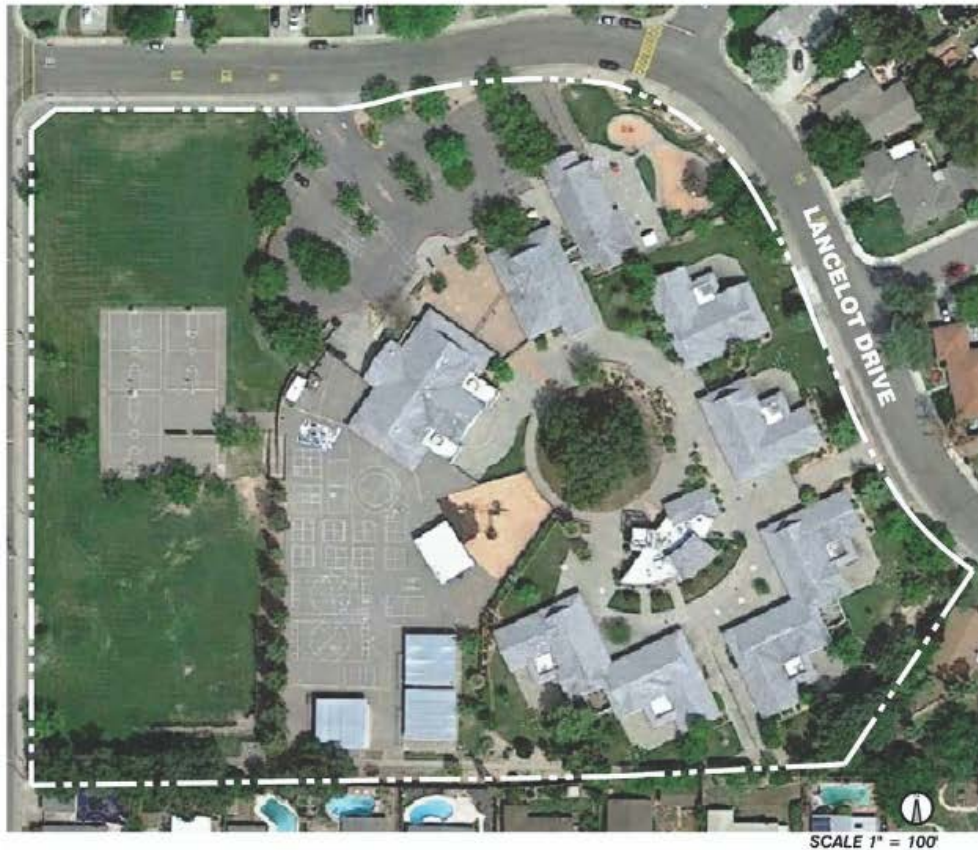
Room #	TRUSD Capacity					State Capacity		
	K	1-3	4-8	SDC - Mild	SDC - Severe	Gross CR Inventory	Permanent	Portable
K1	1					1	1	
K2	1					1	1	
3		1				1	1	
4		1				1	1	
5		1				1	1	
6		1				1	1	
7			1			1	1	
8			1			1	1	
9			1			1	1	
10			1			1	1	
11				1		1	1	
12		1				1	1	
13		1				1	1	
14		1				1	1	
15			1			1	1	
16			1			1	1	
17			1			1	1	
18			1			1	1	
19			1			1	1	
20			1			1	1	
21			1			1	1	
22			1			1	1	
23			1	1		1	1	
24			1			1	1	
25			1			1	1	
26			1			1	1	
27			1			1	1	
28			1			1	1	
29			1			1	1	
Totals:	2	7	17	3	0	29	18	11
								29

Fairbanks Elementary School (K-6)				
TRUSD Capacity Calculations				
K	2			
Students / Rm.	20			
Subtotal	40			
1-3	7			
Students / Rm.	25			
Subtotal	175			
4-8	17			
Students / Rm.	30			
Subtotal	510			
SDC - Mild	3			
Students / Rm.	15			
Subtotal	45			
SDC - Severe	0			
Students / Rm.	12			
Subtotal	0			
State Capacity Calculations				
K-6, w/o Spec. Ed.	26			
Students / Rm.	25			
Subtotal	650			
Spec. Ed. - Non-Severe	3			
Students / Rm.	13			
Subtotal	39			
Spec. Ed. - Severe	0			
Students / Rm.	9			
Subtotal	0			
State Capacity	689			

Total Sq. Ft.	Teacher	Grade	
1,457	Tarke	K	
960	Xiong	K	
960	Griffith	1st	
960	Heck	2nd	
960	Hamilton	3rd	
960	Thao	3rd	
960	Lor	5th	
960	Hernandez	4th	
960	Taylor	4th	
960	Brown	5th	
960	Daly	SDC, K-2	
960	Oakes	1st	
960	Torres	2nd	
960	Balkind	1st	
960	Edwina	Computer	
960	unassigned	Library	
960	unassigned	Counselor	
960	Ulrich	6th	1
960	Ranagan	6th	1
960	Chew	SDC, 5th & 6th	1
960	unassigned	MTSS/EL	1
960	Dominguez	SDC, 3rd & 4th	1
960	Shabazz	RSP/Day, Speech 50/50	1
960	Morton	Masters	1
960	unassigned	Masters	1
960	unassigned	Masters	1
960	unassigned	Masters	1
960	Ranagan	Masters/TV Broadcast	1

Twin Rivers Unified

FOOTHILL OAKS ELEMENTARY



Twin Rivers Unified

FOOTHILL OAKS ELEMENTARY



ABBREVIATIONS:

A	ADMINISTRATION
C	CLASSROOM
K	KINDERGARTEN
MP	MULTI-PURPOSE
L	LIBRARY
PC	PORTABLE CLASSROOM
PR	PORTABLE RESTROOM
R	RESTROOM

Twin Rivers USD

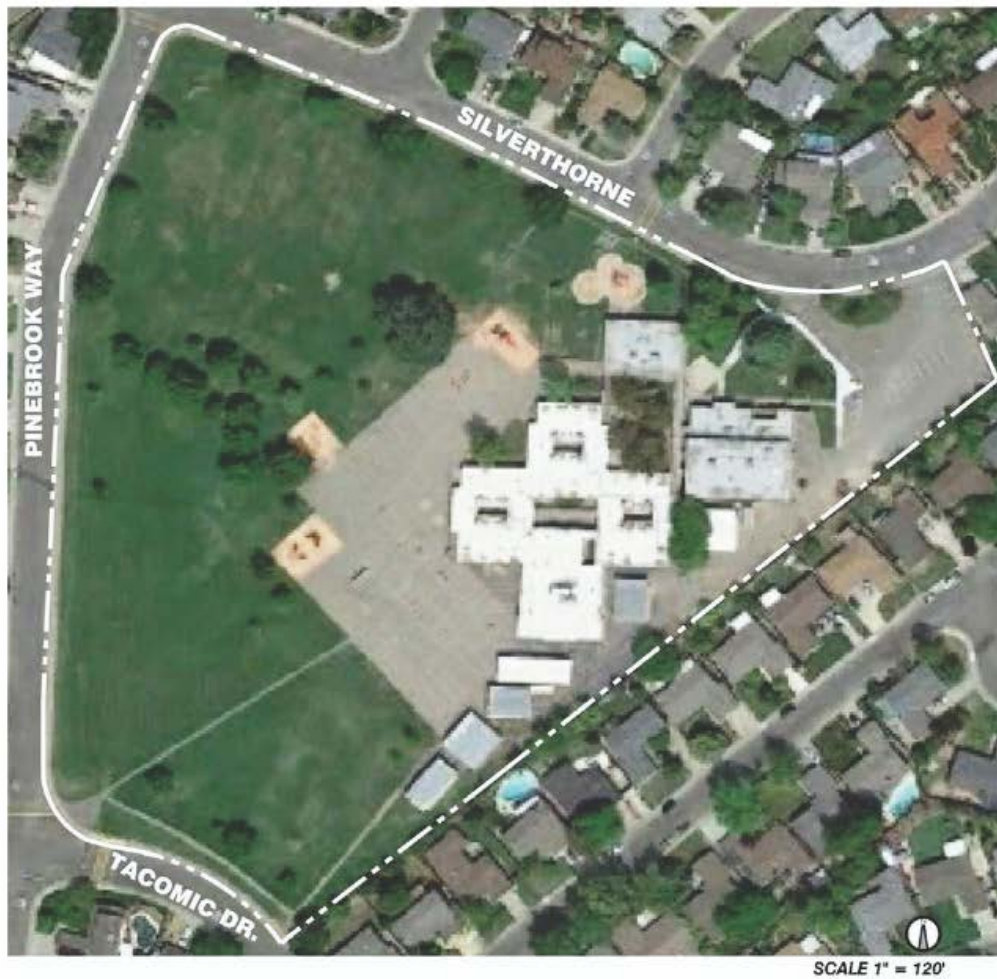
2018-19 Capacity Analysis

Foothill Oaks Elementary School (K-6)

Foothill Oaks Elementary School (K-6)															
Room	TRUSD Capacity							State Capacity			Grade	Teacher	Total Sq. Ft.	TRUSD Capacity Calculations	
	K	1-3	4-8	Room Type	SDC - Mi	SDC - Seve	Gross CR Inventory	Permanent	Portabl						
1	1						1	1			TK & K	Pesce	1,344	K	6
2	1						1	1			K	Evans	1,448	Students / Rm.	20
3	1						1	1			K	Barnes	1,024	Subtotal	120
4	1						1	1			K	Weidkamp	1,024		
5		1					1	1			1st	Booker	1,024		
6	1						1	1			K	Jacobs	1,024	1-3	8
7		1					1	1			1st	Adame	1,024	Students / Rm.	25
8	1						1	1			K	Poole	1,024	Subtotal	200
9		1					1	1			1st	Falero	1,024		
10		1					1	1			2nd	Lunday	1,024	4-8	6
11		1					1	1			3rd	Vogeley	1,024	Students / Rm.	30
12		1					1	1			3rd	Fetzer	1,024	Subtotal	180
13		1					1	1			3rd	Scantlebury	1,024		
14			1				1	1			4th	Mondragon	1,024	SDC - Mild	4
15			1				1	1			5th	Hotchkiss	1,024	Students / Rm.	15
16			1				1	1			4th	Harbman	1,024	Subtotal	60
17			1				1	1			5th	Bamberger	1,024		
18			1				1	1			6th	Toney	1,024	SDC - Severe	0
19			1				1	1			6th	Brown	1,024	Students / Rm.	12
20				1			1	1			SDC, 5th & 6th	Mitchell	1,024	Subtotal	0
21		1					1	1			1st	Killey	1,280		
23					1		1	1			SDC, 2nd - 4th + OT	Ekstedt	1,280		
25					1		1	1			SDC, 1st & 2nd	Jugo	1,280		
A4					1		1	1			SDC, K & 1st	Coleman	900		
State Capacity Calculations															
K-6, w/o Spec. Ed.															
Students / Rm.															
Subtotal															
500															
State Capacity															
Spec. Ed. - Non-Severe															
Students / Rm.															
Subtotal															
52															
State Capacity															
2018-2019															
Subtotal															
552															
Spec. Ed - Severe															
Students / Rm.															
Subtotal															
9															
0															

Twin Rivers Unified

FRONTIER ELEMENTARY



FRONTIER ELEMENTARY



ABBREVIATIONS:
A ADMINISTRATION
C CLASSROOM
K KINDERGARTEN
MP MULTI-PURPOSE
L LIBRARY
PC PORTABLE CLASSROOM
PR PORTABLE RESTROOM
R RESTROOM

Twin Rivers USD

2018-19 Capacity Analysis

Frontier Elementary School (K-6)

Frontier Elementary School (K-6)													
Room #	TRUSD Capacity					State Capacity			Teacher	Grade	Total Sq. Ft.	TRUSD Capacity Calculations	
	K	1-3	4-8	SDC - Mild	SDC - Severe	Gross CR Inventory	Permanent	Portable				K	Students / Rm.
K1	1					1	1		Nozaki	K	1,325	2	
K2	1					1	1		Ikemoto	K	1,325	20	
3		1				1	1		Downey	2nd	945		
4		1				1	1		Burnett	2nd	945	40	
5		1				1	1		Johnson	1st	945		
6		1				1	1		Reid	1st	945	10	District Capacity
7		1				1	1		Barnes	1st	945	25	2018-2019
10			1			1	1		Brusca	5th	945	250	
11			1			1	1		Schmidt	5th	1,020		530
12			1			1	1		Ladd	5th	1,020	8	
13			1			1	1		Warner	6th	1,020	30	
14			1			1	1		Plefka	6th	1,020	240	
15		1				1	1		Gabbert	3rd	945		
16		1				1	1		Cantalupo	2nd	945	0	SDC - Mild
17		1				1	1		Drake	3rd	945	15	
18		1				1	1		Negretot	3rd	945	0	
21		1				1	1	1	Small	3rd	768		
23			1			1	1	1	Nickerson	4th	960	0	SDC - Severe
24A & B			1			1	1	1	unassigned	RSP/Speech/Psych/ Int. & SST	1,280	12	
25			1			1	1	1	Spinner	4th	960	0	
Totals:	2	10	8	0	0	20	16	4	State Capacity Calculations				
										K-6, w/o Spec. Ed.			
										Students / Rm.			
										Subtotal			
										Spec. Ed. - Non-Severe			
										Students / Rm.			
										Subtotal			
										Spec. Ed. - Severe			
										Students / Rm.			
										Subtotal			
										State Capacity			
										2018-2019			
										500			

Twin Rivers Unified

GARDEN VALLEY ELEMENTARY



GARDEN VALLEY ELEMENTARY



ABBREVIATIONS:

A	ADMINISTRATION
C	CLASSROOM
K	KINDERGARTEN
MP	MULTI-PURPOSE
L	LIBRARY
PC	PORTABLE CLASSROOM
PR	PORTABLE RESTROOM
R	RESTROOM

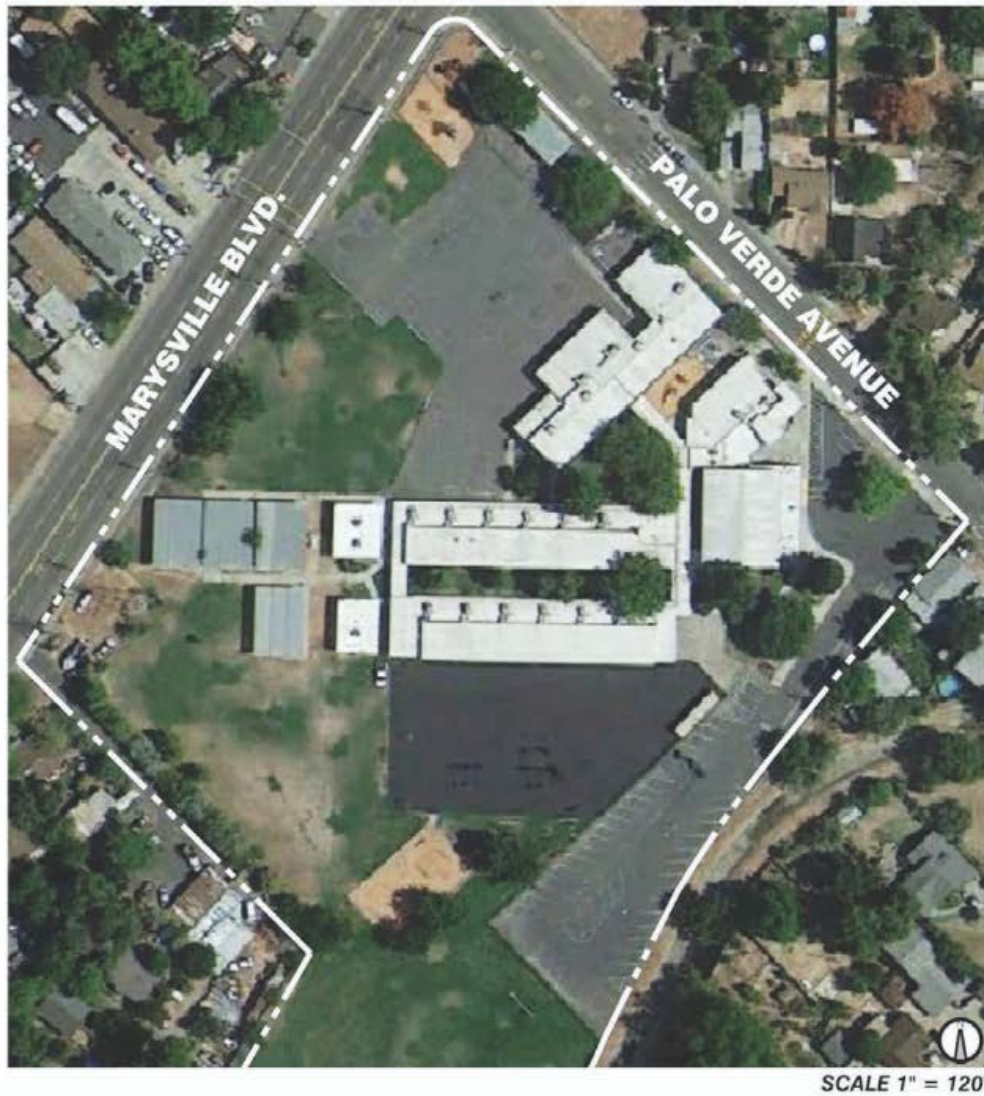
Twin Rivers USD
2018-19 Capacity Analysis

Garden Valley Elementary School (PreK-6)

Room #	TRUSD Capacity				State Capacity		Total Sq. Ft.	Garden Valley Elementary School (PreK-6)						
	Room Type		Gross CR Inventory	Permanent	Portable	TRUSD Capacity Calculations								
	Preschool - TK	K							1-3	4-8				
K		1		1	1		1,470							
1				1	1		1,007					Preschool - TK	0	
2			1	1	1		1,007					Students / Rm.	23	
3				1	1		1,007					Subtotal	0	
4		1		1	1		1,007							
5		1		1	1		1,007					K	5	
6				1	1		1,007					Students / Rm.	20	
7			1	1	1		1,007					Subtotal	100	
8			1	1	1		1,007							
9 & 9B		1		1	1		1,280					1-3	6	
10		1		1	1		960					Students / Rm.	25	
11				1	1		960					Subtotal	150	
12			1	1	1		960							
13				1	1		960					4-8	10	
14			1	1	1		960					Students / Rm.	30	
15				1	1		960					Subtotal	300	
16			1	1	1		960							
17				1	1		960					State Capacity Calculations		
18			1	1	1		960							
19			1	1	1		960							
20				1	1		960					K-6, w/o Spec. Ed.	21	
21A & 21B				1	1		960					Students / Rm.	25	
22A, 22B & 22C				1	1		960					Subtotal	525	
Totals:							0	5	6	10	23	9	14	525
														21

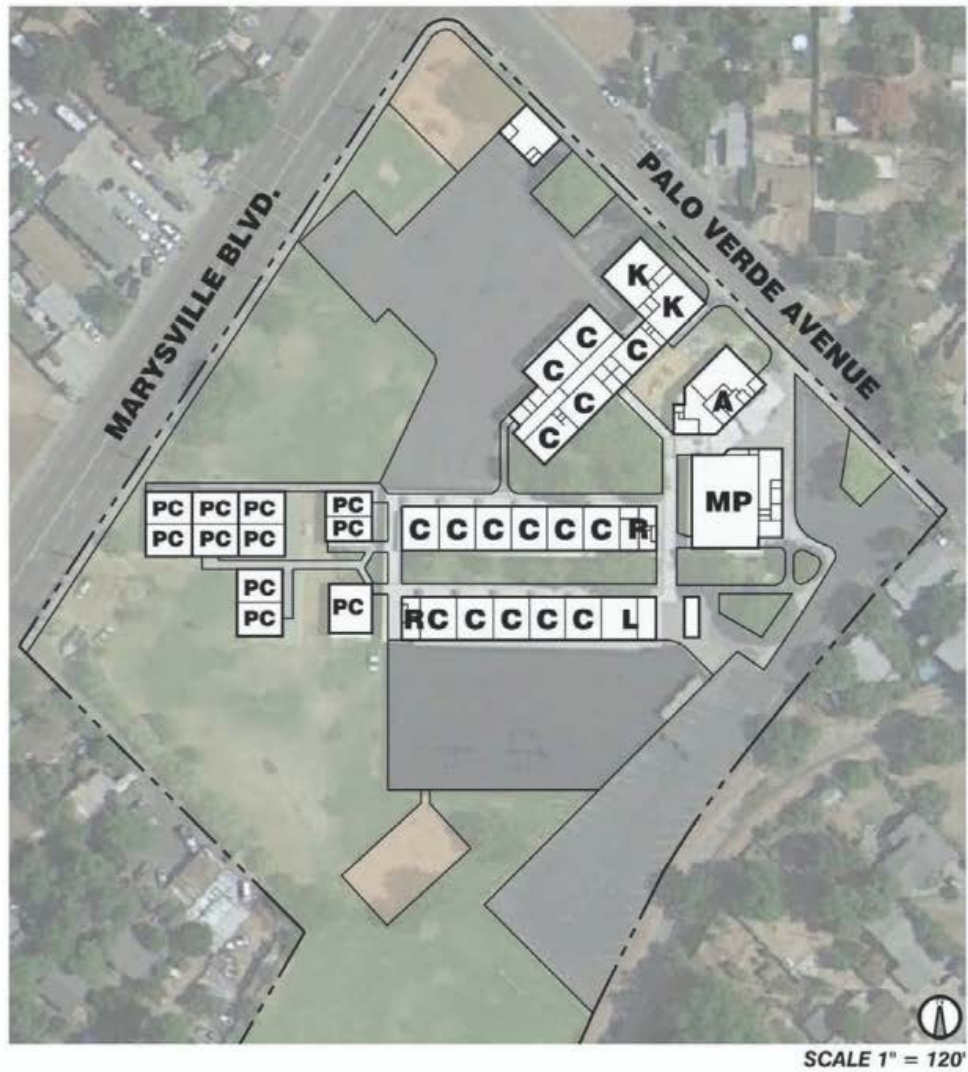
Twin Rivers Unified

HAGGINWOOD ELEMENTARY



Twin Rivers Unified

HAGGINWOOD ELEMENTARY



ABBREVIATIONS:

A	ADMINISTRATION
C	CLASSROOM
K	KINDERGARTEN
MP	MULTI-PURPOSE
L	LIBRARY
PC	PORTABLE CLASSROOM
PR	PORTABLE RESTROOM
R	RESTROOM

Hagginwood Element

Hagginwood Elementary School (PreK-6)													
Room #	TRUSD Capacity Room Type			State Capacity		Teacher	Grade	Total Sq. Ft.	TRUSD Capacity Calculations				
	Preschool - TK	K	1-3	4-8	Gross CR Inventory					Permanent	Portable		
1				1	1	Jones	6th	908					
2				1	1	Cleverdon	6th	908	Preschool - TK 0				
3				1	1	Bahnwal	5th	908	Students / Rm. 23				
4				1	1	Pressler	5th	908	Subtotal 0				
5				1	1	unassigned	Computer Lab	908					
7				1	1	Cavil	4th	908	K 3				
8				1	1	Poole	4th	908	Students / Rm. 20				
9		1		1	1	Billings	2nd	908	Subtotal 60				
10		1		1	1	Bahnwal	2nd	908					
11		1		1	1	Clark	2nd	908	1-3 8				
12		1		1	1	Boyd	1st	908	Students / Rm. 25				
13				1	1	unassigned		816	Subtotal 200				
14			1	1	1	Abdussamed	Counselor	816					
15	1			1	1	Van/Dillon	K & 1st	782	4-8 13				
16	1			1	1	Kumar	K	1,280	Students / Rm. 30				
17	1			1	1	Myers	K	1,400	Subtotal 390				
18		1		1	1	Able	3rd	952					
19		1		1	1	Thao	3rd	952	SDC - Mild 3				
20				1	1	Simon/Yakimyyuk	PreK	960	Students / Rm. 15				
21		1		1	1	Gonsalves	1st	720	Subtotal 45				
22		1		1	1	Smith	1st	720					
23			1	1	1	McManus/Edwards	RSP	720	SDC - Severe 0				
24		1		1	1	Kojima/Dickey	SST/MTSS	720	Students / Rm. 12				
25		1		1	1	unassigned	Masters	720	Subtotal 0				
26			1	1	1	unassigned	Masters	720					
27				1	1	Dierksen/Ortiz	SDC, 2nd - 4th	720					
28				1	1	unassigned	SDC, ReFocus	720					
29				1	1	Julian/Podnebesnaya	SDC, 5th & 6th LH	960					
30				1	1	unassigned	Bilingual Para-Professionals	540	K-6, w/o Spec. Ed. 24				
31				1	1	Horning/Fitzbuck	Psych/Speech	540	Students / Rm. 25				
Totals:					0	3	8	13	3	0	27	600	State Capacity Calculations
												Spec. Ed. - Non-Severe 3	State Capacity
												Students / Rm. 13	2018-2019
												Subtotal 39	639
												Spec. Ed - Severe 0	
												Students / Rm. 9	
												Subtotal 0	

HILLSDALE ELEMENTARY



Twin Rivers Unified

HILLSDALE ELEMENTARY



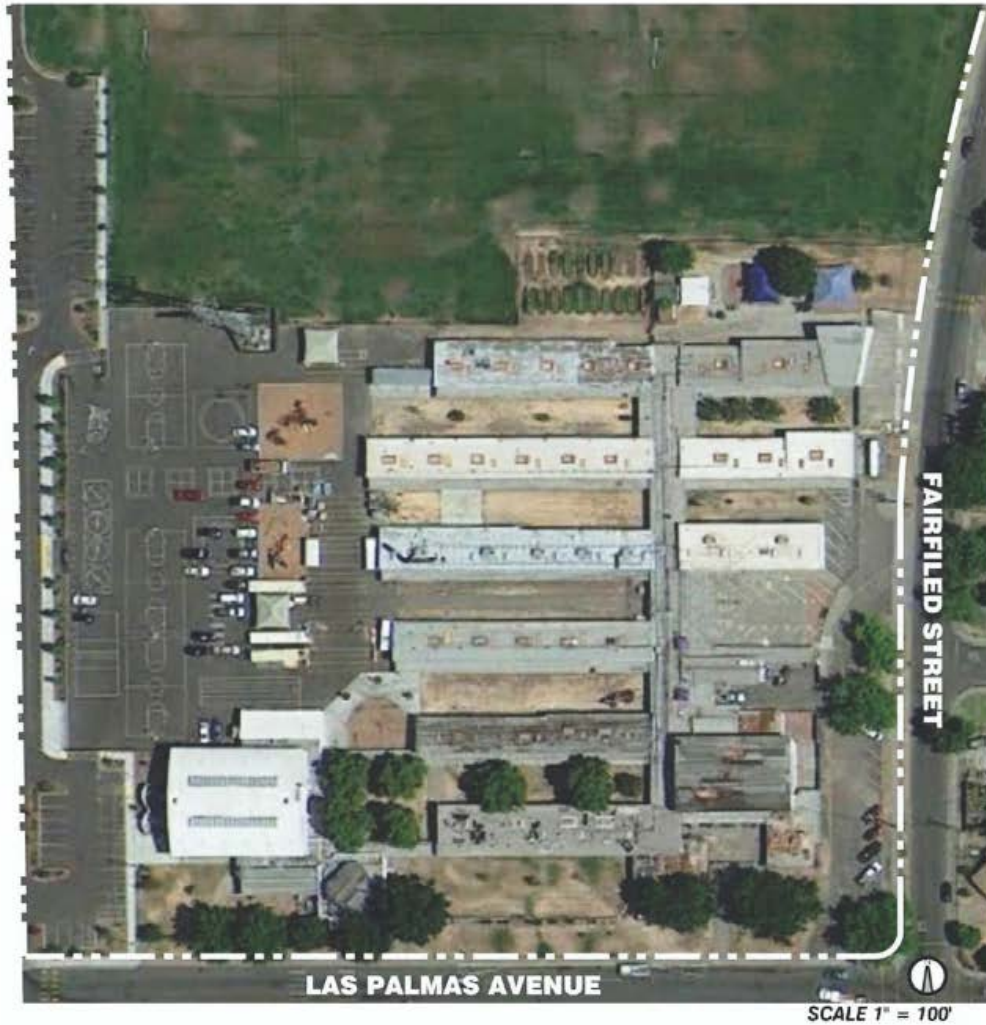
Twin Rivers USD
2018-19 Capacity Analysis

Hillsdale Elementary School (K-6)

Hillsdale Elementary School (K-6)									
Room #	TRUSD Capacity			State Capacity		Teacher	Grade	Total Sq. Ft.	
	K	1-3	Room Type	Gross CR Inventory	Permanent				
K1	1			1	1	Comeau	K	1,740	TRUSD Capacity Calculations
K2	1			1	1	Barton	K	1,740	
3				1	1	Stoffregen	SDC, K & 1st	930	
6				1	1	unassigned	Staff Lounge	930	
7		1	1	1		Scoles	3rd	960	District Capacity 2018-2019
8		1		1	1	Tilton	3rd	960	
9		1		1	1	Miller	1st & 2nd	960	
10			1	1	1	unassigned	Counselor/Speech	960	
11		1		1	1	Hoepner	2nd	960	4-8
12				1	1	Reynon	SDC	860	
13		1		1	1	Stansfield	1st	860	
14				1	1	Moore	SDC	860	
15			1	1	1	unassigned	RSP	860	SDC - Mild
17			1	1	1	Chan	6th	930	
18			1	1	1	Deis	4th	930	
19			1	1	1	Breiter	6th	930	
20			1	1	1	unassigned	OT/PT	930	SDC - Severe
22			1	1	1	Dice-Hodgdon	4th & 5th	930	
23			1	1	1	unassigned	BGC	930	
24			1	1	1	Burdick	5th	930	
Totals:	2	5	10	3	0			20	State Capacity Calculations
K-6, w/o Spec. Ed.									17
Students / Rm.									25
Subtotal									425
Spec. Ed. - Non-Severe									3
Students / Rm.									13
Subtotal									39
Spec. Ed. - Severe									0
Students / Rm.									9
Subtotal									0

Twin Rivers Unified

JOHNSON ELEMENTARY



JOHNSON ELEMENTARY



Twin Rivers USD
2018-19 Capacity Analysis
Harmon Johnson Elementary School (3-6)

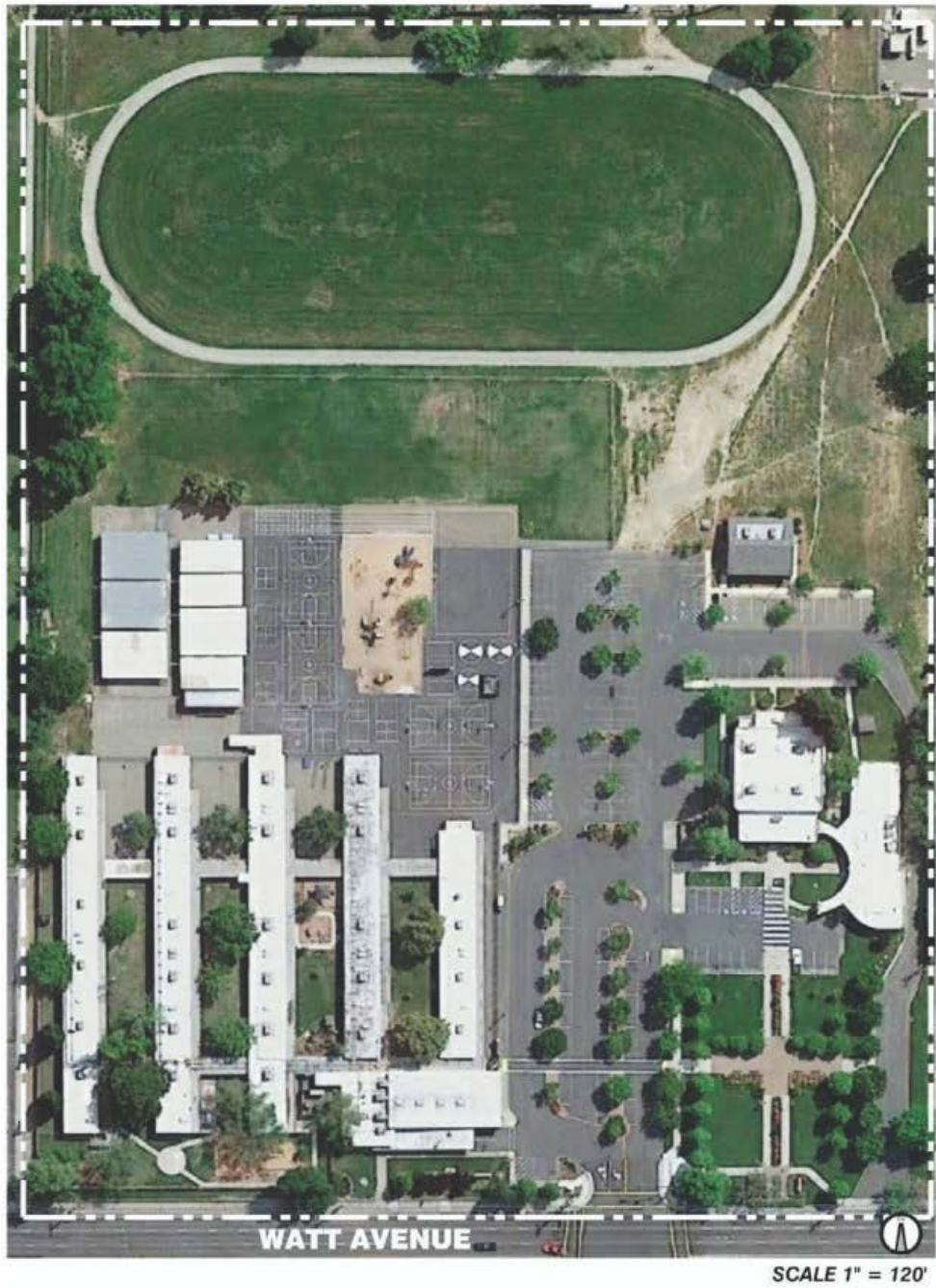
Room #	TRUSD Capacity Room Type		State Capacity		Grade	Teacher	Total Sq. Ft.
	1-3	4-8	Gross CR Inventory	Permanent			
2	1	1	1	1	Counseling/ASC	unassigned	800
3	1	1	1	1	Psych	unassigned	800
21	1	1	1	1	RSP/Speech	Guesnon/Badovinac	800
22	1	1	1	1	RSP	Vue	800
23	1	1	1	1	3rd	Watson	828
24	1	1	1	1	3rd	Haensel	828
31	1	1	1	1	ASC	unassigned	800
32	1	1	1	1	3rd	Bird	800
33	1	1	1	1	3rd	Rogers	800
34	1	1	1	1	ASC	unassigned	800
35	1	1	1	1	PE	unassigned	800
41	1	1	1	1	Staff Lounge	unassigned	1,276
42	1	1	1	1	4th	Thao	1,276
43	1	1	1	1	4th	Murray	800
44	1	1	1	1	4th	DeLodder	800
45	1	1	1	1	4th	Shinoda	800
46	1	1	1	1	3rd	Seale	1,188
47	1	1	1	1	3rd	Seale	1,518
51	1	1	1	1	5th	Derby	1,276
52	1	1	1	1	4th	Smeltzer	800
53	1	1	1	1	4th	Mintzer	800
54	1	1	1	1	5th	Fling	800
55	1	1	1	1	5th	Cruz	800
56	1	1	1	1	5th	unassigned	800
57	1	1	1	1	5th	Weichert	800
58	1	1	1	1	5th	King	800
59	1	1	1	1	6th	Garcia	800
61	1	1	1	1	Family Resource Center	unassigned	1,360
62	1	1	1	1	Adult Ed	unassigned	1,276
63	1	1	1	1	ASC	unassigned	800
64	1	1	1	1	Project Room	unassigned	700
65	1	1	1	1	6th	Carrazana	928
66	1	1	1	1	6th	Carrazana	928
67	1	1	1	1	6th	Cole	928
68	1	1	1	1	6th	Wallace	928
Music	1	1	1	1	Music	unassigned	1,600
Totals:	6	29	36	36			0
							36

Harmon Johnson Elementary School (3-6)

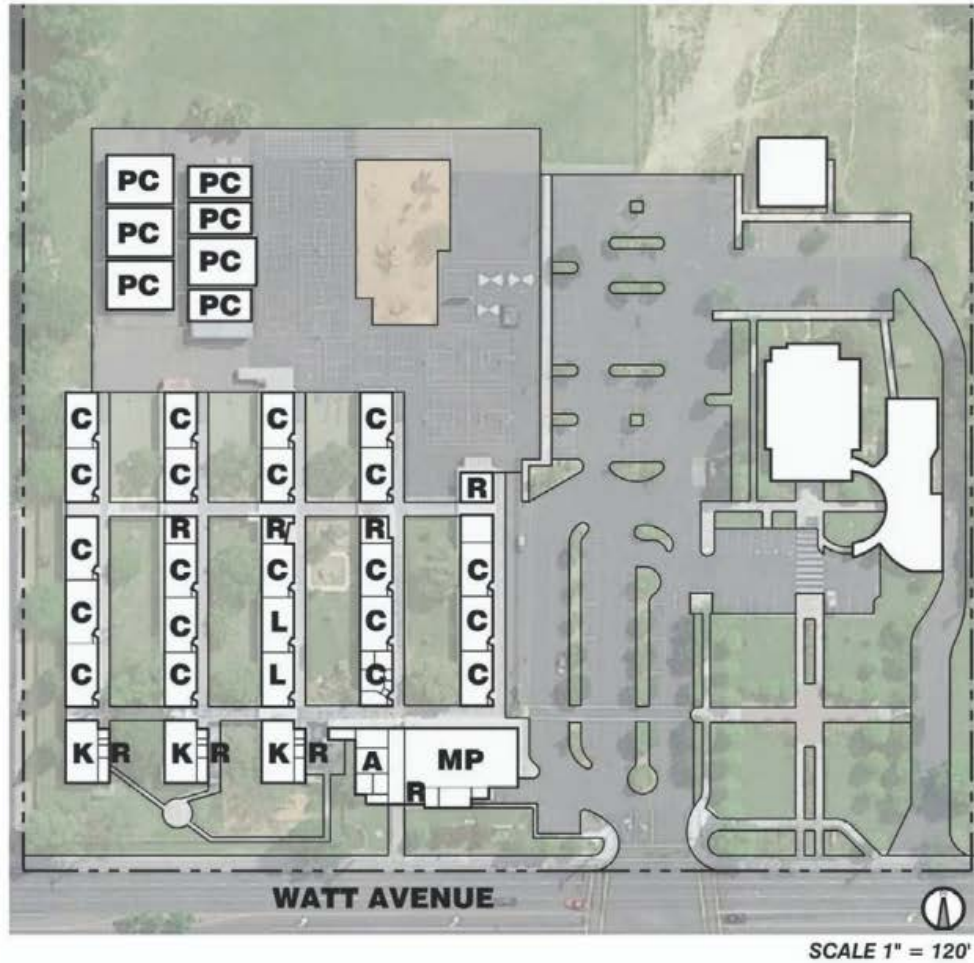
TRUSD Capacity Calculations			
1-3	6	District Capacity	
Students / Rm.	25	2018-2019	
Subtotal	150		
4-8	29	1020	
Students / Rm.	30		
Subtotal	870		
State Capacity Calculations			
K-6, w/o Spec. Ed.	35	State Capacity	
Students / Rm.	25	2018-2019	
Subtotal	875		
		875	

Twin Rivers Unified

JOYCE ELEMENTARY



JOYCE ELEMENTARY



ABBREVIATIONS:

A	ADMINISTRATION
C	CLASSROOM
MP	MULTI-PURPOSE
L	LIBRARY
PC	PORTABLE CLASSROOM
PR	PORTABLE RESTROOM
R	RESTROOM

Twin Rivers USD
2018-19 Capacity Analysis

Joyce, F. C. Elementary School (PreK-8)

Room	TRUSD Capacity					State Capacity		Gross CR Inventory	Permane**	Portab**	Total Sq. Ft.	Joyce, F. C. Elementary School (PreK-8)	
	Preschool - 1	K	1-3	4-8	SDC - Mi	SDC - Sevel						TRUSD Capacity Calculations	
K1							1	1			1,440	Preschool - TK	0
K2	1						1	1			1,440	Students / Rm.	23
K3	1						1	1			1,440	Subtotal	0
4			1				1	1			960		
5			1				1	1			960		
6			1				1	1			960		
7			1				1	1			960		
8				1			1	1			960	K	3
9							1	1			960	Students / Rm.	20
10							1	1			960	Subtotal	60
11				1			1	1			960		
12							1	1			960	1-3	8
13							1	1			960	Students / Rm.	25
14							1	1			960	Subtotal	200
17							1	1			960		
18			1				1	1			960	4-8	16
19				1			1	1			960	Students / Rm.	30
20							1	1			960	Subtotal	480
21		1					1	1			960		
22							1	1			960	SDC - Mild	2
23							1	1			960	Students / Rm.	15
24			1				1	1			960	Subtotal	30
25							1	1			960		
26							1	1			1,104	SDC - Severe	0
27							1	1			1,104	Students / Rm.	12
28							1	1			1,104	Subtotal	0
29							1	1			960		
30							1	1			1,440		
31							1	1			1,440	K-6, w/o Spec. Ed.	22
32							1	1			1,440	Students / Rm.	25
33					1		1	1			1,440	Subtotal	550
34							1	1			960		
35							1	1			960	7-12, w/o Spec. Ed.	5
36							1	1			960	Students / Rm.	27
Totals:	0	3	8	16	2	0	34	27	7	34		Subtotal	135
							29					Spec. Ed. - Non-Severe	2
												Students / Rm.	13
												Subtotal	26
												Spec. Ed - Severe	0
												Students / Rm.	9
												Subtotal	0
												State Capacity	711
												2018-2019	

Twin Rivers Unified

KOHLER ELEMENTARY



Twin Rivers Unified

KOHLER ELEMENTARY



SCALE 1" = 100'

ABBREVIATIONS:

A	ADMINISTRATION
C	CLASSROOM
K	KINDERGARTEN
MP	MULTI-PURPOSE
L	LIBRARY
PC	PORTABLE CLASSROOM
PR	PORTABLE RESTROOM
R	RESTROOM

Twin Rivers USD
2018-19 Capacity Analysis

Kohler Elementary School (PreK-8)

Room #	TRUSD Capacity				State Capacity		
	Preschool - TK	K	1-3	4-8	Gross CR Inventory	Permanent	Portable
K1	1				1	1	
K2	1				1	1	
K3					1		1
K4				1	1	1	
3					1	1	
7			1		1	1	
8				1	1	1	
9				1	1	1	
10					1	1	
11			1		1	1	
12			1		1	1	
13			1		1	1	
14			1		1	1	
15			1		1	1	
16				1	1	1	
17				1	1	1	
18				1	1	1	
19				1	1	1	
20				1	1	1	
21				1	1	1	
22				1	1	1	
24				1	1		1
25				1	1		1
26				1	1		1
27				1	1		1
Totals:	0	3	6	14	23	25	5
						20	25

Kohler Elementary School (PreK-8)			
TRUSD Capacity Calculations			
Preschool - TK	0		
Students / Rm.	23		
Subtotal	0		
K	3		
Students / Rm.	20		
Subtotal	60		
1-3	6		
Students / Rm.	25		
Subtotal	150		
4-8	14		
Students / Rm.	30		
Subtotal	420		
State Capacity Calculations			
K-6, w/o Spec. Ed.	16		
Students / Rm.	25		
Subtotal	400		
7-12, w/o Spec. Ed.	7		
Students / Rm.	27		
Subtotal	189		

Twin Rivers Unified

MADISON ELEMENTARY



Twin Rivers Unified

MADISON ELEMENTARY



Twin Rivers USD
2018-19 Capacity Analysis

Madison Elementary School (PreK-6)

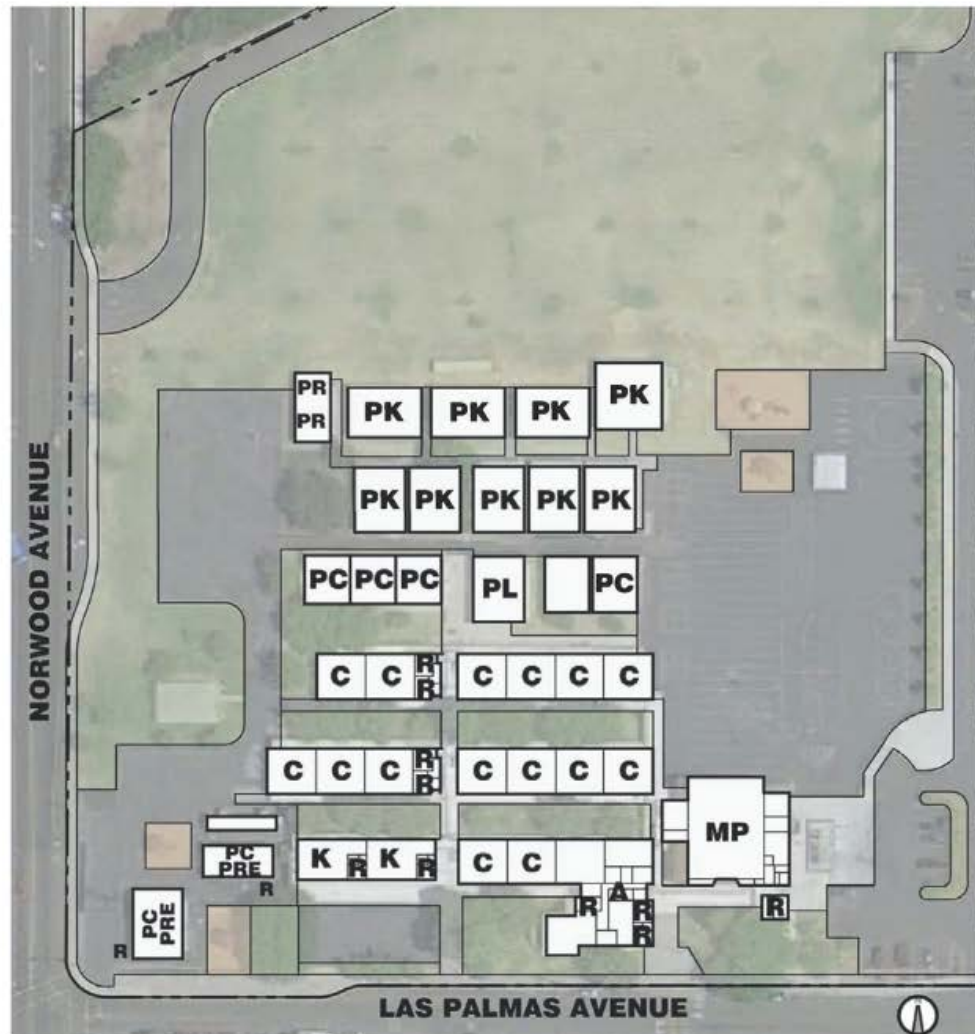
Room #	TRUSD Capacity					Gross CR		State Capacity		Total Sq. Ft.	Madison Elementary School (PreK-6)	
	Preschool - TK	K	1-3	4-8	SDC - Mild	SDC - Severe	Inventory	Permanent	Portable		TRUSD Capacity Calculations	
K1							1	1		1,300		
K2	1						1	1		1,300	Preschool - TK	0
K3							1	1		1,064	Students / Rm.	23
4			1				1	1		922	Subtotal	0
5			1				1	1		922		
6			1				1	1		922	K	5
7			1				1	1		922	Students / Rm.	20
10			1				1	1		922	Subtotal	100
11			1				1	1		922		
12			1				1	1		922	1-3	12
13		1					1	1		922	Students / Rm.	25
14			1				1	1		922	Subtotal	300
15			1				1	1		922		
16				1			1	1		960	4-8	10
17				1			1	1		960	Students / Rm.	30
18				1			1	1		960	Subtotal	300
19			1				1	1		960		
20							1	1		960	SDC - Mild	1
21							1	1		640	Students / Rm.	15
22							1	1		640	Subtotal	15
23				1			1	1		960		
24				1			1	1		960	SDC - Severe	0
25				1			1	1		960	Students / Rm.	12
26				1			1	1		768	Subtotal	0
27					1		1	1		960		
28			1				1	1		960		
29			1				1	1		960		
30							1	1		1,280		
31		1					1	1		960	K-6, w/o Spec. Ed.	27
32			1				1	1		960	Students / Rm.	25
33							1	1		960	Subtotal	675
34		1					1	1		1,280		
Totals:	0	5	12	10	1	0	32	13	19		Spec. Ed. - Non-Severe	1
						28			32		Students / Rm.	13
											Subtotal	688
											Spec. Ed. - Severe	0
											Students / Rm.	9
											Subtotal	0

Twin Rivers Unified

NORALTO ELEMENTARY



NORALTO ELEMENTARY



ABBREVIATIONS:

A	ADMINISTRATION
C	CLASSROOM
K	KINDERGARTEN
MP	MULTI-PURPOSE
L	LIBRARY
PA	PORTABLE ADMINISTRATION
PC	PORTABLE CLASSROOM
PR	PORTABLE RESTROOM
ST	STORAGE
R	RESTROOM

SCALE 1" = 100'

Twin Rivers USD
2018-19 Capacity Analysis

Noralto Elementary School (PreK-2)

Room #	TRUSD Capacity				State Capacity	
	Preschool - TK	K	1-3	SDC - Mild	SDC - Severe	Portable
12					1	
13					1	
14			1		1	
15				1	1	
16				1	1	
17				1		1
18					1	1
20			1		1	
21			1		1	
22			1		1	
23			1		1	
24			1		1	
25			1		1	
26			1		1	
30			1		1	
31			1		1	
32			1		1	
33			1		1	
34			1		1	
35			1		1	
40			1		1	
41			1		1	
42			1		1	
43			1		1	
44		1			1	
45		1			1	
47					1	
48			1		1	
49			1		1	
54					1	
56		1			1	
58		1			1	
60		1			1	
62		1			1	
Totals:	0	6	20	3	34	16
					29	34

Noralto Elementary School (PreK-2)				Total	
Room #	Preschool - TK	K	1-3	Sq. Ft.	Teacher
12				960	Ismerio/Matthews
13				960	Graham
14			1	960	Chahal/Gonzalez
15				1,370	Varela
16				1,370	Leuhs
17				960	Cook
18				1,440	Thompson/Vang
20			1	960	Tassinari
21			1	960	Ramirez
22			1	960	Wise
23			1	960	Bloemker
24			1	960	Reed
25			1	960	Guerra
26			1	960	Ramirez
30			1	3,840	Vang
31			1	3,840	Southern
32			1	3,840	Ortiz
33			1	3,840	Vang
34			1	960	Ferrari
35			1	960	Louie
40			1	960	unassigned
41			1	960	Ghansah
42			1	1,440	Westrup
43			1	960	unassigned
44		1		960	Falvey
45		1		960	Zilaff/Palma
47				720	Moore
48			1	1,440	unassigned
49			1	960	Tanya
54				720	Di Ruocco
56		1		960	Roberts
58		1		720	Koenig
60		1		720	Vang
62		1		720	Jenkins
Totals:	0	6	20	16	
				29	

Noralto Elementary School (PreK-2)				TRUSD Capacity Calculations	
Room #	Preschool - TK	K	1-3	Students / Rm.	Subtotal
12				0	
13				23	
14			1	0	
15				6	
16				20	
17				120	
18				20	
20			1	25	
21			1	500	
22			1	3	
23			1	15	
24			1	45	
25			1	0	
26			1	12	
30			1	0	
31			1	0	
32			1	26	
33			1	25	
34			1	650	
35				0	
40			1	0	
41			1	0	
42			1	0	
43			1	0	
44		1		0	
45		1		0	
47				0	
48			1	0	
49			1	0	
54				0	
56		1		0	
58		1		0	
60		1		0	
62		1		0	
Totals:	0	6	20	0	
				0	

Noralto Elementary School (PreK-2)				State Capacity	
Room #	Preschool - TK	K	1-3	Students / Rm.	Subtotal
12				0	
13				27	
14			1	0	
15				650	
16				0	
17				9	
18				0	
20			1	9	
21			1	0	
22			1	0	
23			1	0	
24			1	0	
25			1	0	
26			1	0	
30			1	0	
31			1	0	
32			1	0	
33			1	0	
34			1	0	
35				0	
40			1	0	
41			1	0	
42			1	0	
43			1	0	
44		1		0	
45		1		0	
47				0	
48			1	0	
49			1	0	
54				0	
56		1		0	
58		1		0	
60		1		0	
62		1		0	
Totals:	0	6	20	0	
				0	

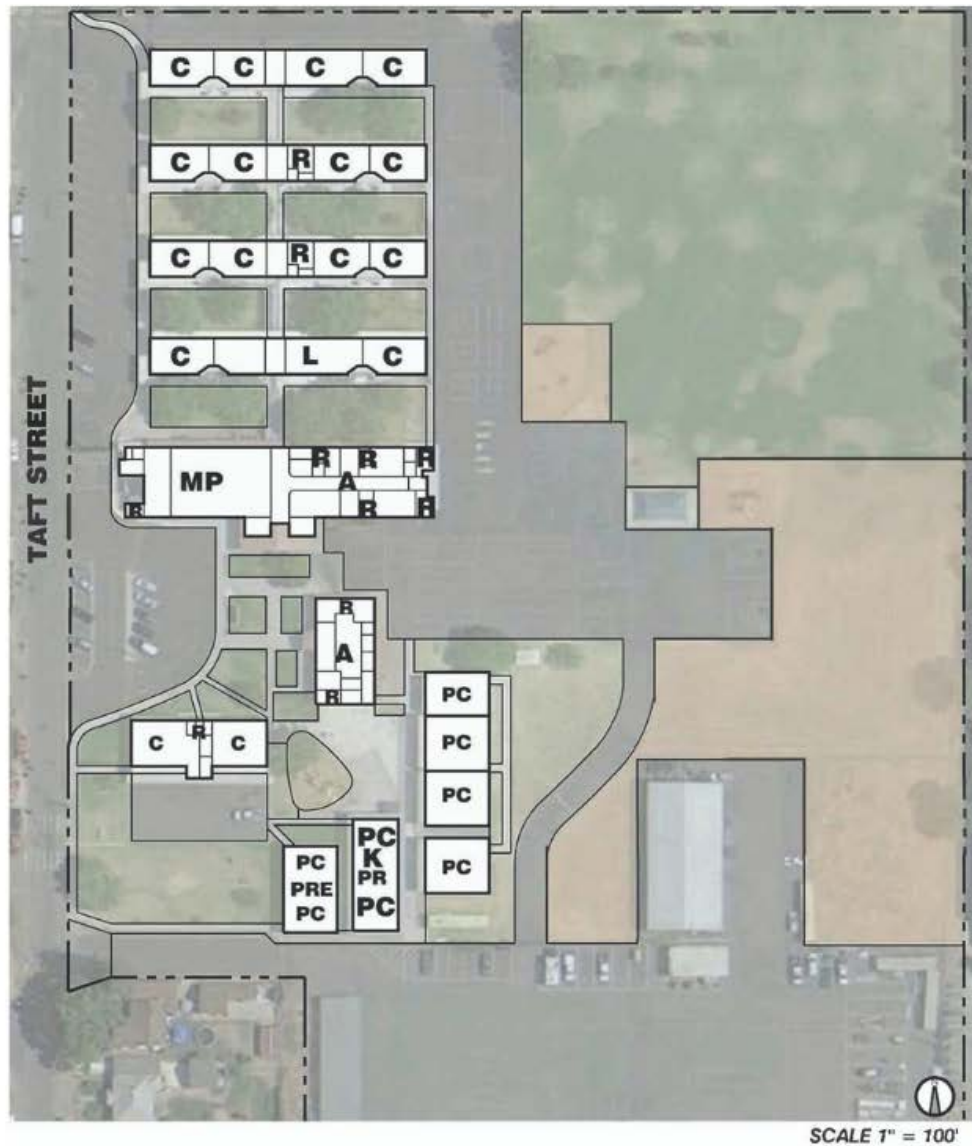
Twin Rivers Unified

NORTHWOOD ELEMENTARY



Twin Rivers Unified

NORTHWOOD ELEMENTARY



ABBREVIATIONS:

A	ADMINISTRATION
C	CLASSROOM
K	KINDERGARTEN
MP	MULTI-PURPOSE
L	LIBRARY
PC	PORTABLE CLASSROOM
PR	PORTABLE RESTROOM
R	RESTROOM

Twin Rivers USD
2018-19 Capacity Analysis

Northwood Elementary School (PreK-6)

Room #	TRUSD Capacity				State Capacity	
	Preschool - TK	K	1-3	4-8	Gross CR Inventory	Permanent
1			1	1	1	1
2			1	1	1	1
3					1	1
4			1	1	1	1
5			1	1	1	1
6			1	1	1	1
7			1	1	1	1
9			1	1	1	1
10			1	1	1	1
11			1	1	1	1
12			1	1	1	1
14			1	1	1	1
15			1	1	1	1
16			1	1	1	1
17			1	1	1	1
19			1	1	1	1
26					1	1
27					1	1
28					1	1
29					1	1
30					1	1
31					1	1
36				1	1	1
37				1	1	1
38				1	1	1
39		1			1	1
40					1	1
41					1	1
42			1	1	1	1
43		1			1	1
44			1	1	1	1
45			1		1	1
46				1	1	1
47		1			1	1
48			1		1	1
Totals:	0	3	9	12	2	0
					35	24
					0	11
					26	35

TRUSD Capacity Calculations				State Capacity Calculations	
Preschool - TK	811	0		K-6, w/o Spec. Ed.	24
Students / Rm.	23			Students / Rm.	25
Subtotal	1,152	0		Subtotal	600
K	834	3		Spec. Ed. - Non-Severe	2
Students / Rm.	20			Students / Rm.	13
Subtotal	834	60		Subtotal	26
1-3	834	9		Spec. Ed. - Severe	0
Students / Rm.	25			Students / Rm.	9
Subtotal	905	225		Subtotal	0
4-8	811	12			
Students / Rm.	30				
Subtotal	964	360			
SDC - Mild	512	2			
Students / Rm.	15				
Subtotal	182	30			
SDC - Severe	421	0			
Students / Rm.	12				
Subtotal	1,319	0			
	960				
	1,280				
	720				
	1,280				
	905				
	720				
	720				
	960				
	972				
	720				
	720				

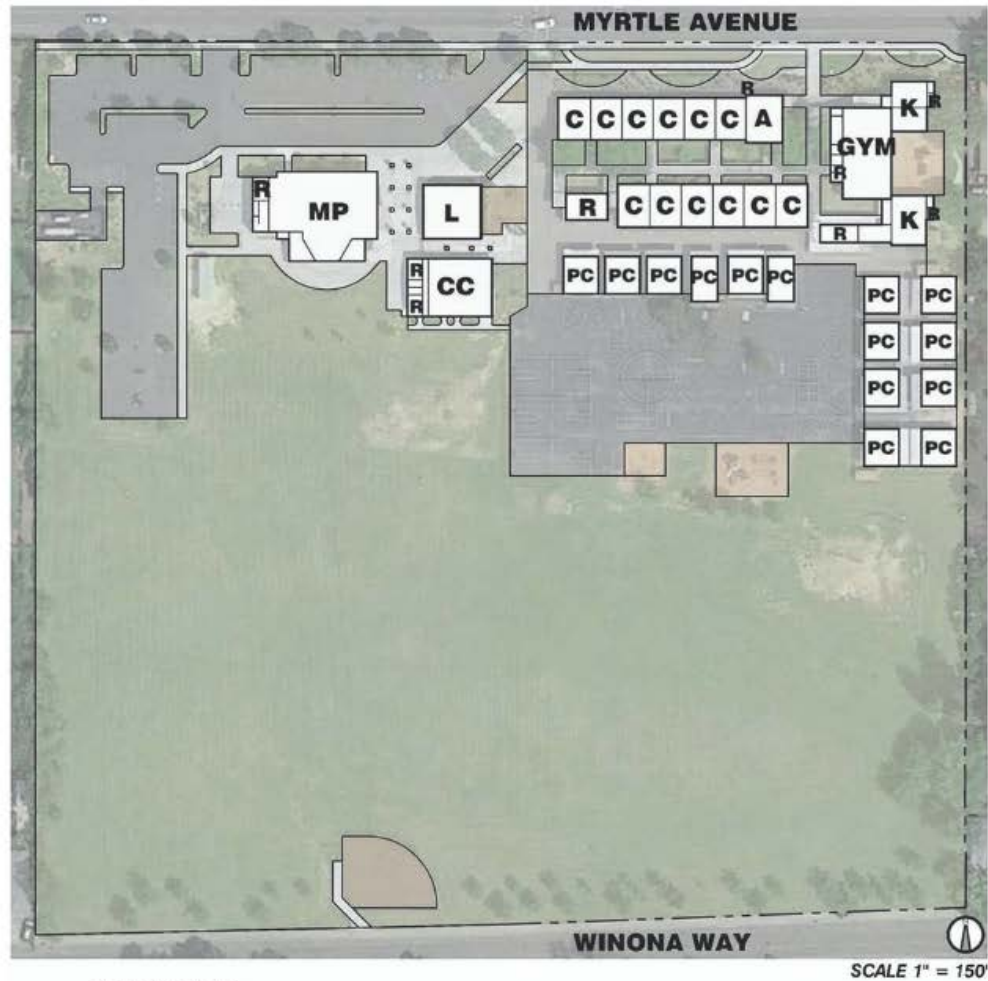
Twin Rivers Unified

OAKDALE ELEMENTARY



Twin Rivers Unified

OAKDALE ELEMENTARY



Twin Rivers USD 2018-19 Capacity Analysis

[illegible]

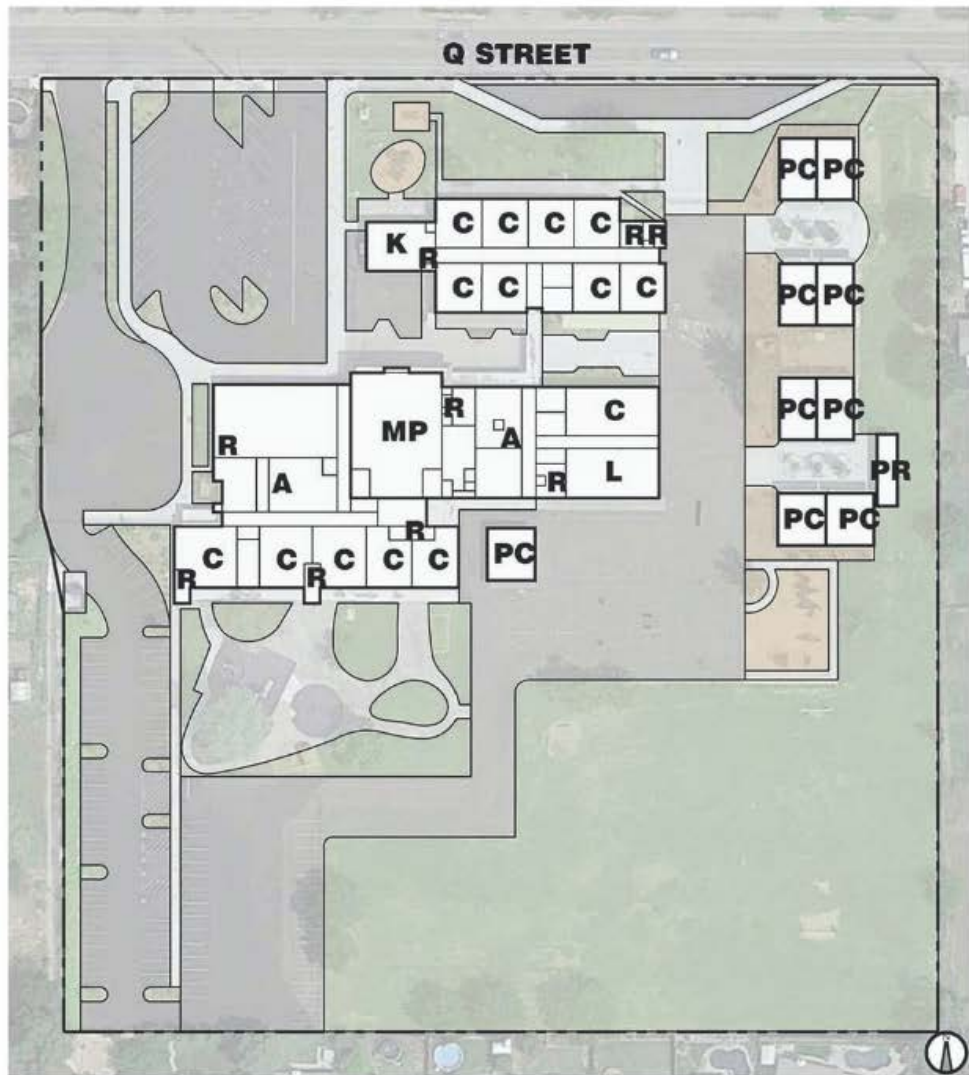
Twin Rivers Unified

ORCHARD ELEMENTARY



Twin Rivers Unified

ORCHARD ELEMENTARY



SCALE 1" = 100'

ABBREVIATIONS:

A	ADMINISTRATION
C	CLASSROOM
K	KINDERGARTEN
MP	MULTI-PURPOSE
L	LIBRARY
PC	PORTABLE CLASSROOM
PR	PORTABLE RESTROOM
R	RESTROOM

Twin Rivers USD
2018-19 Capacity Analysis
Orchard Elementary School (PreK-8)

Orchard Elementary School (Prek-8)									
Room #	TRUSD Capacity				State Capacity		Teacher	Grade	Total Sq. Ft.
	Preschool - TK	K	1-3	4-8	Gross CR Inventory	Permanent			
K1		1			1	1	Colton	TK & K	1,245
2			1		1	1	Schwall	1st	930
3			1		1	1	Langry	2nd	930
4		1			1	1	Baker	TK & K	930
5			1		1	1	Vanasen	1st	930
6		1			1	1	Fadness	K	930
7			1		1	1	Watte	2nd	930
8					1	1	unassigned	Intervention	352
9			1		1	1	Lorta	1st	930
10			1		1	1	McMurry	2nd	930
11				1	1	1	Pepper	5th	930
12				1	1	1	unassigned	5th	930
15				1	1	1	Larson	Lounge/Book Room	930
16			1		1	1	Franklin	3rd	960
17				1	1	1	Johnson	6th	960
18				1	1	1	Nichols	6th	960
19					1	1	Brooks/Liggiera/Delplanque	PreK (OI)	960
20				1	1	1	unassigned	OI Inclusion Specialists	960
21					1	1	Morte	District Preschool/PreK	960
24			1		1	1	Trujillo	3rd	960
25				1	1	1	Riggs	4th	960
26				1	1	1	Ray	4th & 5th	960
27				1	1	1	Kleinle	4th	960
28				1	1	1	Howard	8th	960
29				1	1	1	Gainey	7th	960
30				1	1	1	Mau	8th	960
31				1	1	1		7th	108
Totals:									
0		3	8	13	27	18	9	27	
								24	

Twin Rivers Unified

PIONEER ELEMENTARY



Twin Rivers Unified

PIONEER ELEMENTARY



ABBREVIATIONS:

A	ADMINISTRATION
C	CLASSROOM
K	KINDERGARTEN
MP	MULTI-PURPOSE
L	LIBRARY
PC	PORTABLE CLASSROOM
PR	PORTABLE RESTROOM
R	RESTROOM

Twin Rivers USD
2018-19 Capacity Analysis

Pioneer Elementary School (PreK-8)

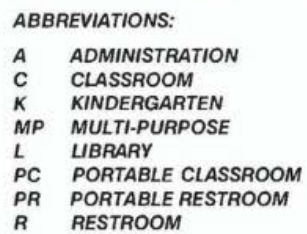
Low-High	Grade	Room #	TRUSD Capacity				State Capacity		Teacher	Grade	Total Sq. Ft.	Pioneer Elementary School (PreK-8)			
			Preschool - TK	K	1-3	4-8	Gross CR Inventory	Permanent	Portable			TRUSD Capacity Calculations			
	K-8	K1		1			1	1		K, Full-Day	1,312	Preschool - TK	0		
	K-8	K2					1	1		TK	1,312	Students / Rm.	23		
	K-8	K3		1			1	1		K, Full-Day	960	Subtotal	0		
	K-8	4				1	1	1		8th	960				
	K-8	5				1	1	1		8th	960				
	K-8	6				1	1	1		7th	960				
	K-8	7				1	1	1		McCann	960	K	4	District Capacity	
	K-8	10				1	1	1		Ganzer	960	Students / Rm.	20	2018-2019	
	K-8	11		1		1	1	1		Trone	960	Subtotal	80	660	
	K-8	12				1	1	1		Bagby	960				
	K-8	13				1	1	1		Dvorak	960	1-3	10		
	K-8	14			1	1	1	1		Thomson	960	Students / Rm.	25		
	K-8	15				1	1	1		Espino	960	Subtotal	250		
	K-8	16			1	1	1	1		Ballesteros	960	4-8	11		
	K-8	17			1	1	1	1		Peterson	960	Students / Rm.	30		
	K-8	18			1	1	1	1		Nahhas	960	Subtotal	330		
	K-8	19			1	1	1	1		Whitl	960				
	K-8	20				1	1	1		Gross	1,280				
	K-8	21		1		1	1	1		ASES, K	960	State Capacity Calculations			
	K-8	22				1	1	1		Castro	960				
	K-8	23			1	1	1	1		Jowers	960	K-6, w/o Spec. Ed.	21	State Capacity	
	K-8	24			1	1	1	1		Chellino	960	Students / Rm.	25	2018-2019	
	K-8	25				1	1	1		Bates	960	Subtotal	525		
	K-8	26			1	1	1	1		Clark	960				
	K-8	27			1	1	1	1		Allen	960	7-12, w/o Spec. Ed.	4		
	K-8	28				1	1	1		Todd	960	Students / Rm.	27		
	K-8	29				1	1	1		Polson/Buschow	960	Subtotal	108		
	K-8	30				1	1	1		SST/Counselor	600				
										Small-Birondo/Iohl	360				
										Speech/Psych					
										DuDash/McCarty					
		Totals:	0	4	10	11	28	17	11						
						25			28						

Twin Rivers Unified

REGENCY PARK ELEMENTARY



REGENCY PARK ELEMENTARY



2018-19 Capacity Analysis

Regency Park Elementary School (PreK-6)

Room #	TRUSD Capacity				State Capacity		Total
	Room Type		Gross CR	Portable			
	Preschool - TK	K	1-3		4-8	Inventory	
Day Care							
Pre-School							
101							
111							
112							
131							
132							
133							
134							
141							
142							
143							
144							
151							
152							
153							
154							
155							
156							
161							
162							
163							
164							
165							
166							
171							
172							
173							
174							
175							
176							
181							
182							
183							
184							
185							
186							
191							
192							
Totals:		0	6	15	16	39	0
						37	39

Regency Park Elementary School (PreK-6)						
Room #	TRUSD Capacity Calculations			Teacher	Grade	Sq. Ft.
	Preschool - TK	K	1-3			
	Preschool - TK	TK	TK			
	Students / Rm.	Ekstrum	Ekstrum			
	Subtotal	Subtotal	Subtotal			
101				4th R	Day Care	1,496
111				unassigned	Beanstalk	1,568
112				Ekstrum	Staff Lounge	0
131				Peterson	TK	1,440
132				Rivera/Jackson	K	1,440
133				Tileston	Counselor/Psych	928
134				Beinhorn	K	928
141				Michael	K	928
142				Rasmussen	6th	928
143				Barwait	5th	928
144				Young	5th	928
151				O'Connor	5th	928
152				Nicholas	4th	928
153				Ervin	4th	928
154				Martin	4th	928
155				Bradley	4th	928
156				Thomure-Albrecht	6th	928
161				Smith	6th	928
162				Marion/Medeiros/Fanfelle	RSP	928
163				Marion/Medeiros/Fanfelle	RSP	928
164				Banks	3rd	928
165				Avery	3rd	928
166				Davis	3rd	928
171				Hatcher	3rd	928
172				Harvey	2nd	928
173				Friedrich	2nd	928
174				Harms	2nd	928
175				Ballard	2nd	928
176				Godwin	2nd	928
181				McCowen	2nd	928
182				Rilea	1st	928
183				Wallace	1st	928
184				Rowe	1st	928
185				Dargan	1st	928
186				Kobane	1st	928
191				Jun/Jones	Music/Art	928
192				Villec	K	1,120
				Bingham	K	1,120
State Capacity Calculations						
K-6, w/o Spec. Ed.			37	State Capacity		
Students / Rm.			25	2018-2019		
Subtotal			925			
			925			

Twin Rivers Unified

RIDGEPOINT ELEMENTARY



RIDGEPOINT ELEMENTARY



SCALE 1" = 150'

ABBREVIATIONS:

A	ADMINISTRATION
C	CLASSROOM
K	KINDERGARTEN
MP	MULTI-PURPOSE
L	LIBRARY
PC	PORTABLE CLASSROOM
PR	PORTABLE RESTROOM
R	RESTROOM

Twin Rivers USD
2018-19 Capacity Analysis

Ridgepoint Elementary School (K-8)

Room #	TRUSD Capacity			State Capacity		Teacher	Grade	Total Sq. Ft.	Ridgepoint Elementary School (K-8)		
	K	1-3	4-8	Gross CR Inventory	Permanent				TRUSD Capacity Calculations		
Childcare											
1	1			1	1	Beanstalk	Beanstalk	1,440			
2	1			1	1	Boue	K	1,400	K	4	
3	1			1	1	Russo	K	1,400	Students / Rm.	20	
4				1	1	Lawrence	K	1,080	Subtotal	80	
5			1	1	1	Franklin	4th	1,080			
6			1	1	1	Thomas	4th	1,080	1-3	10	District Capacity
7		1		1	1	Gibb	2nd	960	Students / Rm.	25	2018-2019
8		1		1	1	Reichman	2nd	960	Subtotal	250	
9		1		1	1	Rydell	2nd	960			750
10		1		1	1	Tucker	1st	960	4-8	14	
11			1	1	1	Straehle	5th	1,080	Students / Rm.	30	
12			1	1	1	Highfill	4th & 5th	1,080	Subtotal	420	
13			1	1	1	Freeman	5th	1,080			
14			1	1	1	Salter	6th	1,080			
15			1	1	1	McVay	6th	1,080	State Capacity Calculations		
16			1	1	1	Michel	6th	1,080			
17			1	1	1	Reid	1st	960	K-6, w/o Spec. Ed.	23	State Capacity
18			1	1	1	Galarze	7th	960	Students / Rm.	25	2018-2019
19			1	1	1	Azarov	3rd	1,080	Subtotal	575	
20			1	1	1	Schmalenberger	3rd	1,080			710
21			1	1	1	Donohue	3rd	1,080	7-12, w/o Spec. Ed.	5	
22			1	1	1	Hardisty	7th	960	Students / Rm.	27	
23			1	1	1	Green	1st	1,080	Subtotal	135	
24				1	1	Torres	1st	1,080			
25	1			1	1	Schmalenberger	K	1,080			
26			1	1	1	Newcomb	8th	960			
27			1	1	1	Perez	Counselor	960			
28			1	1	1	Franklin, R.	7th & 8th	960			
						Bricker	8th	960			
Totals:	4	10	14	29	20						
				28							

Twin Rivers Unified

SIERRA VIEW ELEMENTARY



Twin Rivers Unified

SIERRA VIEW ELEMENTARY



SCALE 1" = 120'

ABBREVIATIONS:

A	ADMINISTRATION
C	CLASSROOM
K	KINDERGARTEN
MP	MULTI-PURPOSE
L	LIBRARY
PC	PORTABLE CLASSROOM
PR	PORTABLE RESTROOM
R	RESTROOM

Twin Rivers USD 2018-19 Capacity Analysis

TRUSD Capacity Room Type						State Capacity		Total Sq. Ft.
Room #	Preschool - TK	K	1-3	4-8	Gross CR Inventory	Permanent	Portable	
1		1		1	1	1		1,440
2			1		1	1		960
3		1			1	1		960
4		1			1	1		960
5			1		1	1		960
6		1	1		1	1		960
7		1	1		1	1		960
8		1	1		1	1		960
9		1	1		1	1		960
12			1		1	1		570
13		1			1	1		960
14			1		1	1		960
15		1	1		1	1		960
16		1	1		1	1		960
17		1	1		1	1		960
18		1			1	1		960
19			1		1		1	960
20		1	1		1	1		640
21			1		1		1	640
22			1		1			960
24					1	1		1,440
State Capacity Calculations								
K-6, w/o Spec. Ed.								19
Students / Rm.								25
Subtotal								475
Totals:								
		0	3	6	10	21	17	4
							19	21

Sierra View Elementary School (Prek-6)			
TRUSD Capacity Calculations		Total	
Preschool - TK	0	Sq. Ft.	1,440
Students / Rm.	23		
Subtotal	0		
K	3		
Students / Rm.	20		
Subtotal	60		
District Capacity 2018-2019	510		
1-3	6		
Students / Rm.	25		
Subtotal	150		
4-8	10		
Students / Rm.	30		
Subtotal	300		
State Capacity Calculations			
K-6, w/o Spec. Ed.			
Students / Rm.			
Subtotal			
475			

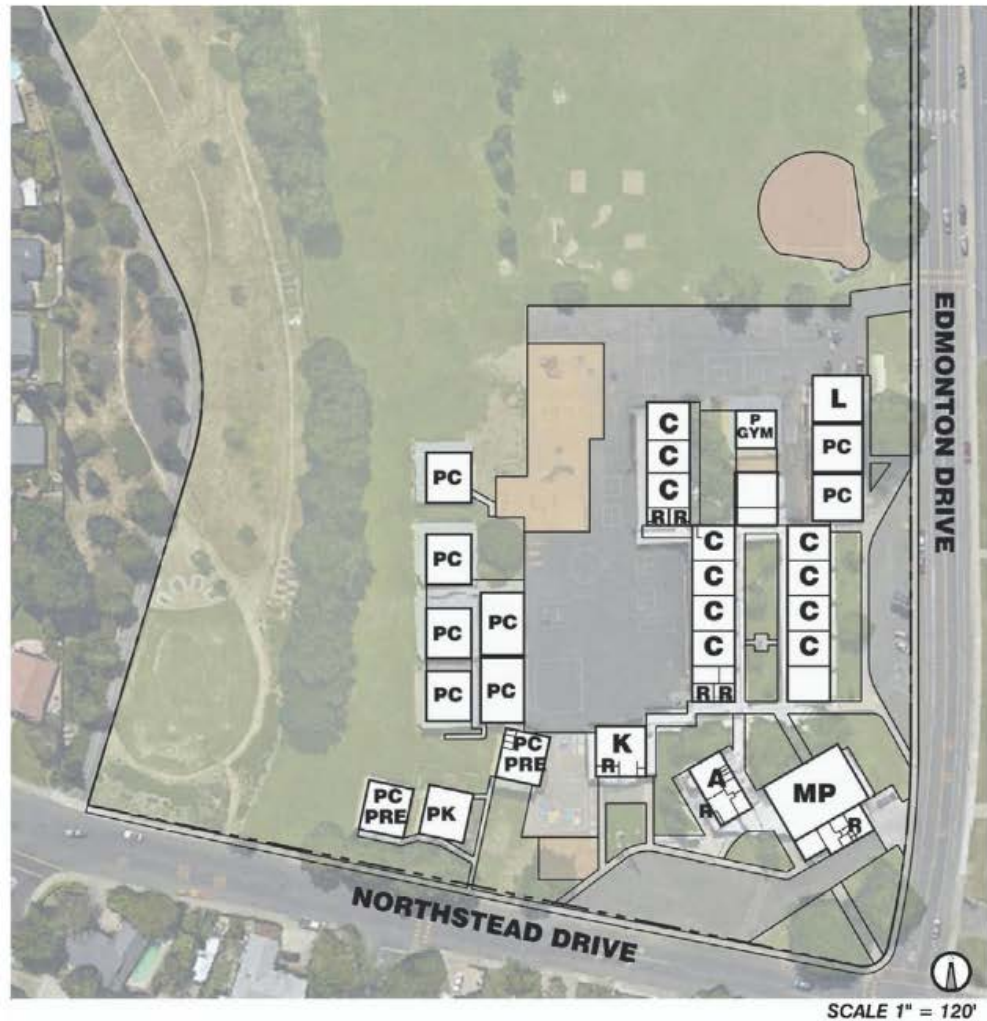
Twin Rivers Unified

STRAUCH ELEMENTARY



Twin Rivers Unified

STRAUCH ELEMENTARY



ABBREVIATIONS:

A	ADMINISTRATION
C	CLASSROOM
K	KINDERGARTEN
MP	MULTI-PURPOSE
L	LIBRARY
PC	PORTABLE CLASSROOM
PK	PORTABLE KINDERGARTEN
PR	PORTABLE RESTROOM
PRE	PRESCHOOL
R	RESTROOM

Twin Rivers USD
2018-19 Capacity Analysis
Strauch, Hazel Elementary School (PreK-5)

Room #	TRUSD Capacity				State Capacity		
	Preschool - TK	K	1-3	4-8	Gross CR Inventory	Permanent	Portable
1		1			1		1
2					1		1
3					1		1
4		1			1		1
5		1			1		1
6		1			1		1
7		1			1		1
8			1		1	1	
9			1		1	1	
10			1		1	1	
11				1	1		1
13			1		1	1	
14					1	1	
17			1		1	1	
18					1	1	1
19			1		1	1	1
20					1	1	1
21			1		1	1	
22			1		1	1	
23				1	1	1	
24				1	1	1	
25				1	1	1	
26				1	1	1	
27				1	1	1	
28				1	1	1	
29				1	1	1	
30		1			1		1
31		1			1		1
32		1			1		1
33					1		1
34		1			1		1
35					1		1
36					1		1
37				1	1		1
38				1	1		1
Totals:	0	6	12	10	35	14	21
				28			35

TRUSD Capacity Calculations				Total Sq. Ft.	Teacher	Grade
Preschool - TK	TK	Students / Rm.	Subtotal			
0	0	23	0	1,360	Peri	K
23	23		1,440	1,440	Reynoso	TK
0	0		720	1,440	Greenig/Rae/Fernandez	Preschool
6	6		720	720	Phongmany	K
20	20		720	720	Phongmany	K
120	120		908	908	Rector	K
12	12		908	908	Peer	K
25	25		1,920	1,920	Borja	3rd
300	300		908	908	Stockton	3rd
10	10		446	446	Asbury	3rd
30	30		908	908	Tau	RSP
300	300		908	908	unassigned	1st
10	10		908	908	Hoaglen	Speech/Psych
30	30		468	468	unassigned	1st
300	300		908	908	Del Castillo	Storage
10	10		908	908	Karl	1st
30	30		908	908	Lilly	TOSA
300	300		908	908	Land-Price	3rd
28	28		908	908	Thomson	1st
700	700		908	908	Michelman	5th
25	25		908	908	Bartell	5th
700	700		908	908	Rieson	5th
28	28		908	908	MacDonald	4th
700	700		908	908	Springer	4th
28	28		908	908	unassigned	Computer Lab
700	700		908	908	Lasron	2nd
28	28		908	908	Little	2nd
700	700		908	908	Sanchez	2nd
28	28		908	908	Davis	2nd
700	700		908	908	Aguirre	K
28	28		908	908	unassigned	EL Classes for Parents/Intervention
700	700		908	908	Green/Fespermann/England	Preschool
28	28		908	908	unassigned	Intervention/Masters
700	700		908	908	unassigned	Computer Lab

Twin Rivers Unified

VILLAGE ELEMENTARY



Twin Rivers Unified

VILLAGE ELEMENTARY



ABBREVIATIONS:

A	ADMINISTRATION
C	CLASSROOM
K	KINDERGARTEN
MP	MULTI-PURPOSE
L	LIBRARY
PC	PORTABLE CLASSROOM
PR	PORTABLE RESTROOM
R	RESTROOM

Twin Rivers USD
2018-19 Capacity Analysis

Village Elementary School (PreK-8)

Village Elementary School (PreK-8)												
Room #	TRUSD Capacity				State Capacity		Teacher	Grade	Total Sq. Ft.			
	Preschool - TK	K	1-3	Room Type	4-8	SDC - Mild				SDC - Severe	Gross CR Inventory	Permanent
K1		1						1	1	Diegleman	K	1,440
K2		1						1	1	Murray	K	1,440
5			1					1	1	Malikasian	1st	960
6			1					1	1	Geddes	1st	960
7			1					1	1	Mancheno	2nd	960
8			1					1	1	Anthony	2nd	960
10				1				1	1	Breger	4th	960
11				1				1	1	Aguilar	5th	960
12					1			1	1	Jaime/Lindner	SDC, K-6	960
13						1		1	1	unassigned	Mindfulness Room	960
14				1				1	1	Barrett	5th	960
15				1				1	1	King	4th	960
19					1			1	1	Masters	6th	960
20			1					1	1	Coughlin	3rd	960
21			1					1	1	Costello	3rd	960
22				1				1	1	Rodgers	6th	960
23				1				1	1	Graves	8th	960
24					1			1	1	Collins	PE	960
25				1				1	1	Harshbarger	7th & 8th	960
26			1					1	1	Hawkins	7th & 8th	960
27			1					1	1	Weir	7th	960
28			1					1	1	Crenshaw	7th	960
29				1				1	1	Hamblen	8th	960
30				1		1		1	1	Phillips	SDC, 7th & 8th	960
PS1								1	1	Cici	PreK	960
PS2								1	1	Rala	PreK	960
Totals:												
	0	2	6	12	2	0	22	26	16	K-6, w/o Spec. Ed.		16
										Students / Rm.		25
										Subtotal		400
										7-12, w/o Spec. Ed.		6
										Students / Rm.		27
										Subtotal		162
										Spec. Ed. - Non-Severe		2
										Students / Rm.		13
										Subtotal		26
										Spec. Ed - Severe		0
										Students / Rm.		9
										Subtotal		0
TRUSD Capacity Calculations												
Preschool - TK												
Students / Rm.												
Subtotal												
K												
Students / Rm.												
Subtotal												
1-3												
Students / Rm.												
Subtotal												
4-8												
Students / Rm.												
Subtotal												
SDC - Mild												
Students / Rm.												
Subtotal												
SDC - Severe												
Students / Rm.												
Subtotal												
State Capacity Calculations												
K-6, w/o Spec. Ed.												
Students / Rm.												
Subtotal												
7-12, w/o Spec. Ed.												
Students / Rm.												
Subtotal												
Spec. Ed. - Non-Severe												
Students / Rm.												
Subtotal												
Spec. Ed - Severe												
Students / Rm.												
Subtotal												
State Capacity												
2018-2019												
588												

Twin Rivers Unified

WESTSIDE ELEMENTARY



Twin Rivers Unified

WESTSIDE ELEMENTARY



ABBREVIATIONS:

A ADMINISTRATION
C CLASSROOM
K KINDERGARTEN
MP MULTI-PURPOSE
L LIBRARY
PC PORTABLE CLASSROOM
PR PORTABLE RESTROOM
R RESTROOM

SCALE 1" = 100'

Twin Rivers USD
2018-19 Capacity Analysis

Westside Elementary School (K-6)

Room #	TRUSD Capacity			State Capacity		
	K	1-3	4-8	Gross CR Inventory	Permanent	Portable
1	1			1	1	
2	1			1	1	
3	1			1		1
4		1		1	1	
7		1		1	1	
8		1		1	1	
9		1		1	1	
10				1		1
11			1	1		1
12			1	1		1
13		1		1		1
14		1		1		1
15		1		1		1
17			1	1	1	
18			1	1	1	
19			1	1	1	
20			1	1	1	
21			1	1	1	
22			1	1	1	
Totals:	3	7	8	19	12	7
			18			19

Westside Elementary School (K-6)

TRUSD Capacity Calculations		
K		3
Students / Rm.		20
Subtotal		60
1-3		7
Students / Rm.		25
Subtotal		175
District Capacity		475
4-8		8
Students / Rm.		30
Subtotal		240
State Capacity Calculations		
K-6, w/o Spec. Ed.		18
Students / Rm.		25
Subtotal		450
State Capacity		450

Total

Sq. Ft.

1,512

1,512

768

960

960

960

960

192

960

960

960

960

960

960

960

960

960

960

960

960

960

960

960

960

960

960

960

960

960

960

960

960

960

960

960

960

960

960

960

960

960

960

960

960

960

Twin Rivers Unified

WOODLAKE ELEMENTARY



WOODLAKE ELEMENTARY



Twin Rivers USD
2018-19 Capacity Analysis

Woodlake Elementary School (PreK-6)

Room #	TRUSD Capacity					State Capacity		Gross CR Inventory	Teacher	Grade	Total Sq. Ft.	Woodlake Elementary School (PreK-6)		
	Preschool - TK	TK	1-3	4-8	SDC - Mild	SDC - Severe	Permanent					Preschool - TK	Students / Rm.	Subtotal
1					1		1	1	Smart	SDC, 2-4	930		0	
2							1	1	Flok	MTSS	930		23	
3		1					1	1	Durbrow	K	930		0	
4		1					1	1	Padian	K	1,504			
5				1			1	1	Devereaux	SDC, 5th & 6th	960	K	2	
7				1			1	1	Holden	5th	1,440	Students / Rm.	20	
8							1	1	Flores-Acosta	Preschool	960	Subtotal	40	
9			1				1	1	Xiong	1st	930			
10			1				1	1	Haysbert	1st	930	1-3	7	
11				1			1	1	Le	4th	930	Students / Rm.	25	
12				1			1	1	Ferenz	4th	930	Subtotal	175	
13							1	1	Galante	Speech	720			
14							1	1	Cruz	Counselor	720	4-8	6	
16				1			1	1	Tolentino	6th	930	Students / Rm.	30	
17				1			1	1	Gonzalez	6th	930	Subtotal	180	
18			1				1	1	Ceballos	3rd	930			
19			1				1	1	Jones	3rd	930	SDC - Mild	2	
21							1	1	Woods/Prado	RSP	720	Students / Rm.	15	
22							1	1	Callejas/Ramos	ASB	720	Subtotal	30	
23				1			1	1	Liss	5th	1,440			
24							1	1	unassigned	Custodian	384	SDC - Severe	0	
25							1	1	RRR	Day Care (Adult)	1,530	Students / Rm.	12	
26			1				1	1	unassigned	Masters/SNAHC	1,920	Subtotal	0	
27			1				1	1	Carroll	2nd	960			
28			1				1	1	Kohler	2nd	960			
Totals:	0	2	7	6	2	0	25	13				State Capacity Calculations		
												K-6, w/o Spec. Ed.		
												Students / Rm.		
												Subtotal		
												Spec. Ed. - Non-Severe		
												Students / Rm.		
												Subtotal		
												State Capacity		
												2018-2019		
												526		
												Spec. Ed - Severe		
												Students / Rm.		
												Subtotal		
												0		
												9		
												0		

Twin Rivers Unified

WOODRIDGE ELEMENTARY




SCALE 1" = 150'

WOODRIDGE ELEMENTARY



ABBREVIATIONS:

A	ADMINISTRATION
C	CLASSROOM
K	KINDERGARTEN
MP	MULTI-PURPOSE
L	LIBRARY
PC	PORTABLE CLASSROOM
PR	PORTABLE RESTROOM
R	RESTROOM

SCALE 1" = 150'

Twin Rivers USD

2018-19 Capacity Analysis

Woodridge Elementary School (PreK-4)

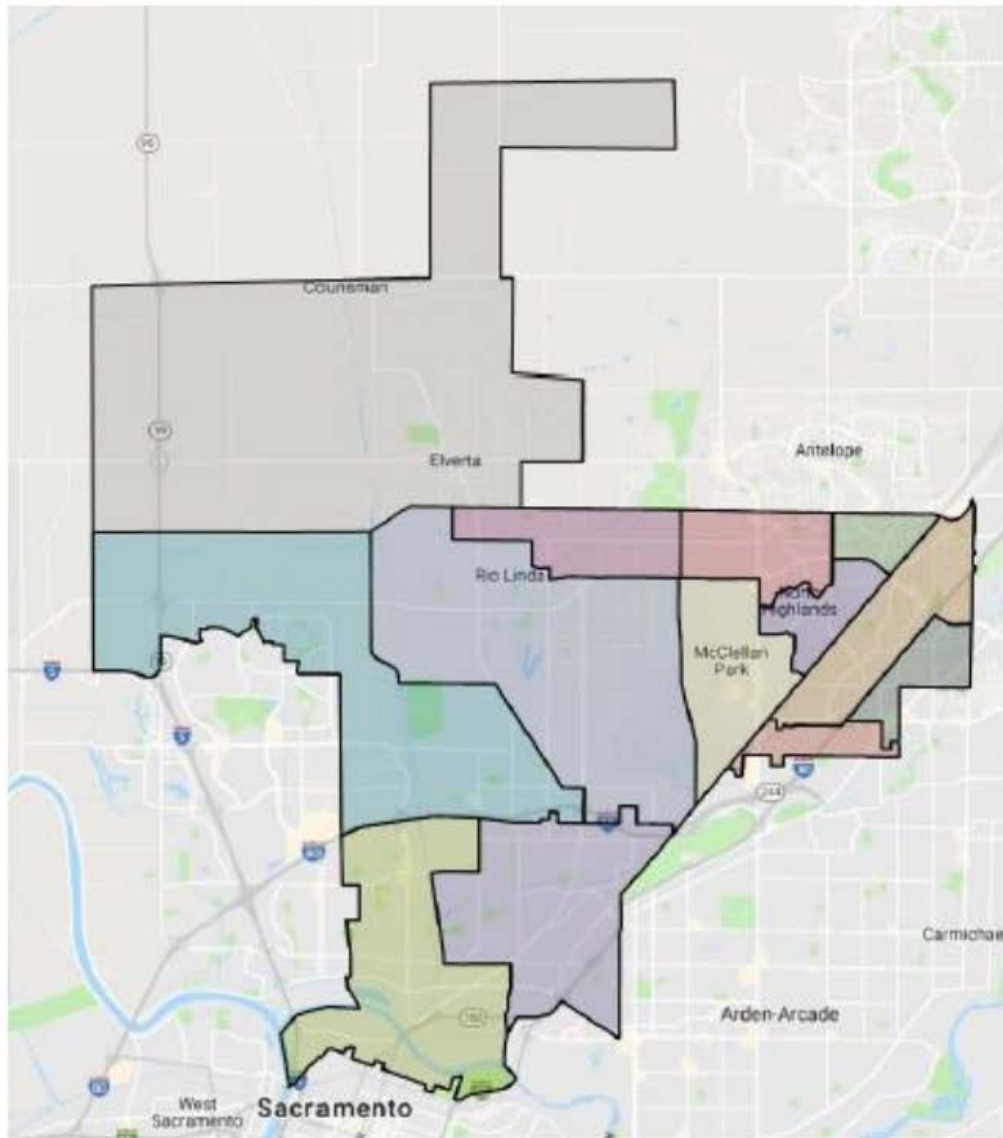
Room #	TRUSD Capacity					State Capacity		
	Preschool - TK	K	1-3	4-8	Room Type	Gross CR Inventory	Permanent	Portable
1	1		1			1	1	
2	1		1			1	1	
3	1		1			1	1	
4			1			1	1	
5	1		1			1	1	
6			1			1	1	
7	1		1			1	1	
8	1		1			1	1	
9	1		1			1	1	
10	1		1			1	1	
11						1	1	
12						1	1	
13		1				1	1	
14		1				1	1	
15		1				1	1	
16		1				1	1	
17				1		1	1	
18		1				1	1	
19						1	1	
20			1			1	1	
21		1	1			1	1	
22		1	1			1	1	
23				1		1	1	
24				1		1	1	
25				1		1	1	
26						1	1	
27						1	1	
28				1		1	1	
29				1		1	1	
30				1		1	1	
31				1		1	1	
32			1			1	1	
33			1			1	1	
PS1						1	1	
PS2						1	1	
PS3						1	1	
PS4						1	1	
Totals:	0	5	13	7		27	36	13
							23	36

TRUSD Capacity Calculations					District Capacity	
Room #	Preschool - TK	Students / Rm.	Subtotal		2018-2019	
1	0	23	0			
2	23	0	0			
3	0					
4						
5	5		5			
6	20	100	100			
7	20					
8	13	25	13			
9	25		25			
10	325		325			
11	7		7			
12	30	210	30			
13	210		210			
14	2		2			
15	15		15			
16	30		30			
17	2		2			
18	15		15			
19	30		30			
20	0		0			
21	12		12			
22	0		0			
23						
24						
25						
26						
27						
28						
29						
30						
31						
32						
33						
PS1	2		2			
PS2	13		13			
PS3	26		26			
PS4	651		651			
Totals:	0	9	0			
	9		0			

State Capacity Calculations				
Room #	K-6, w/o Spec. Ed.	Students / Rm.	Subtotal	
1	25	25	25	
2	625		625	
3				
4				
5				
6				
7				
8				
9				
10				
11				
12				
13				
14				
15				
16				
17				
18				
19				
20				
21				
22				
23				
24				
25				
26				
27				
28				
29				
30				
31				
32				
33				
PS1	2		2	
PS2	13		13	
PS3	26		26	
PS4	651		651	
Totals:	0	9	0	
	9		0	

Twin Rivers Unified

MIDDLE SCHOOL BOUNDARIES



Twin Rivers Unified

FOOTHILL RANCH MIDDLE SCHOOL



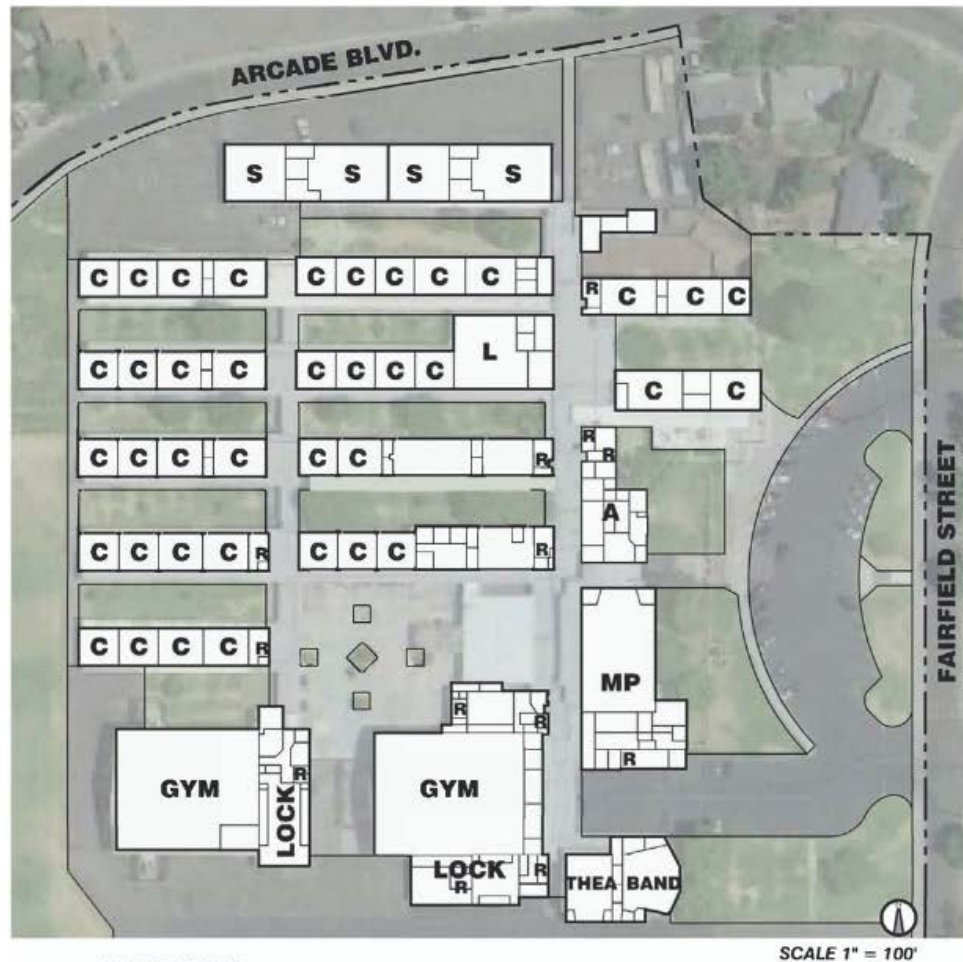
Twin Rivers Unified

MARTIN LUTHER KING JR TECHNOLOGY ACADEMY



Twin Rivers Unified

MARTIN LUTHER KING JR TECHNOLOGY ACADEMY

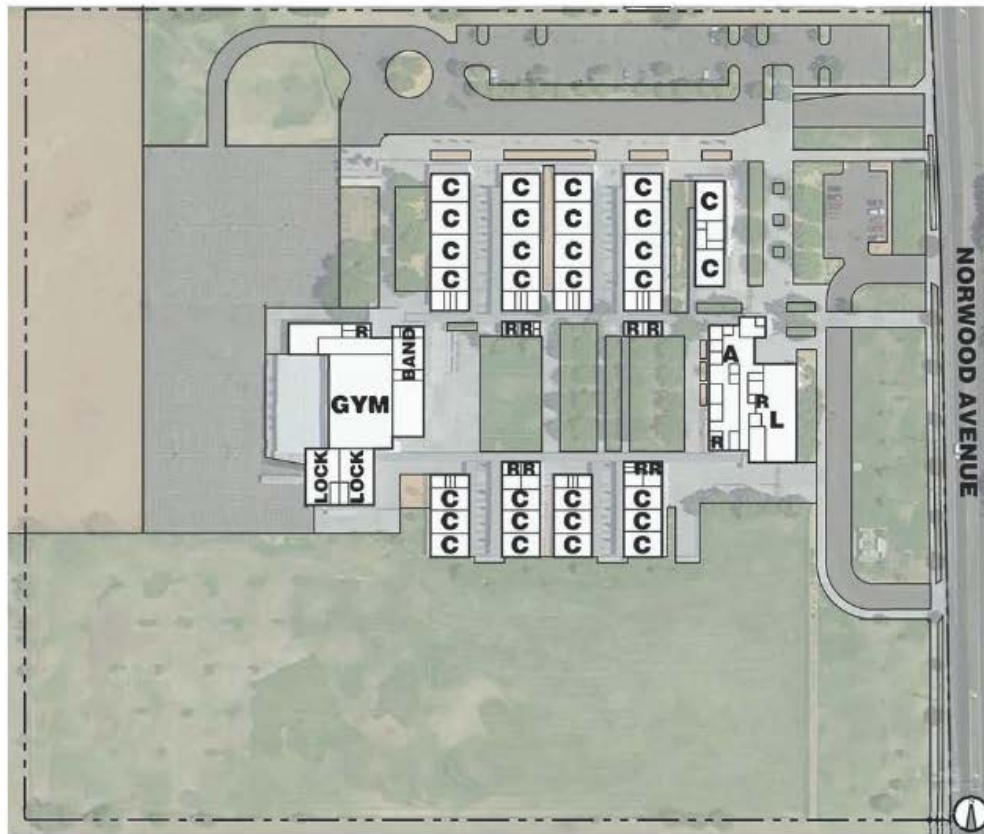


ABBREVIATIONS:

A ADMINISTRATION
C CLASSROOM
MP MULTI-PURPOSE
L LIBRARY
PC PORTABLE CLASSROOM
PR PORTABLE RESTROOM
R RESTROOM
S CTE

Twin Rivers Unified

NORWOOD JUNIOR HIGH



SCALE 1" = 120'

ABBREVIATIONS:

A	ADMINISTRATION
C	CLASSROOM
K	KINDERGARTEN
MP	MULTI-PURPOSE
L	LIBRARY
PC	PORTABLE CLASSROOM
PR	PORTABLE RESTROOM
R	RESTROOM

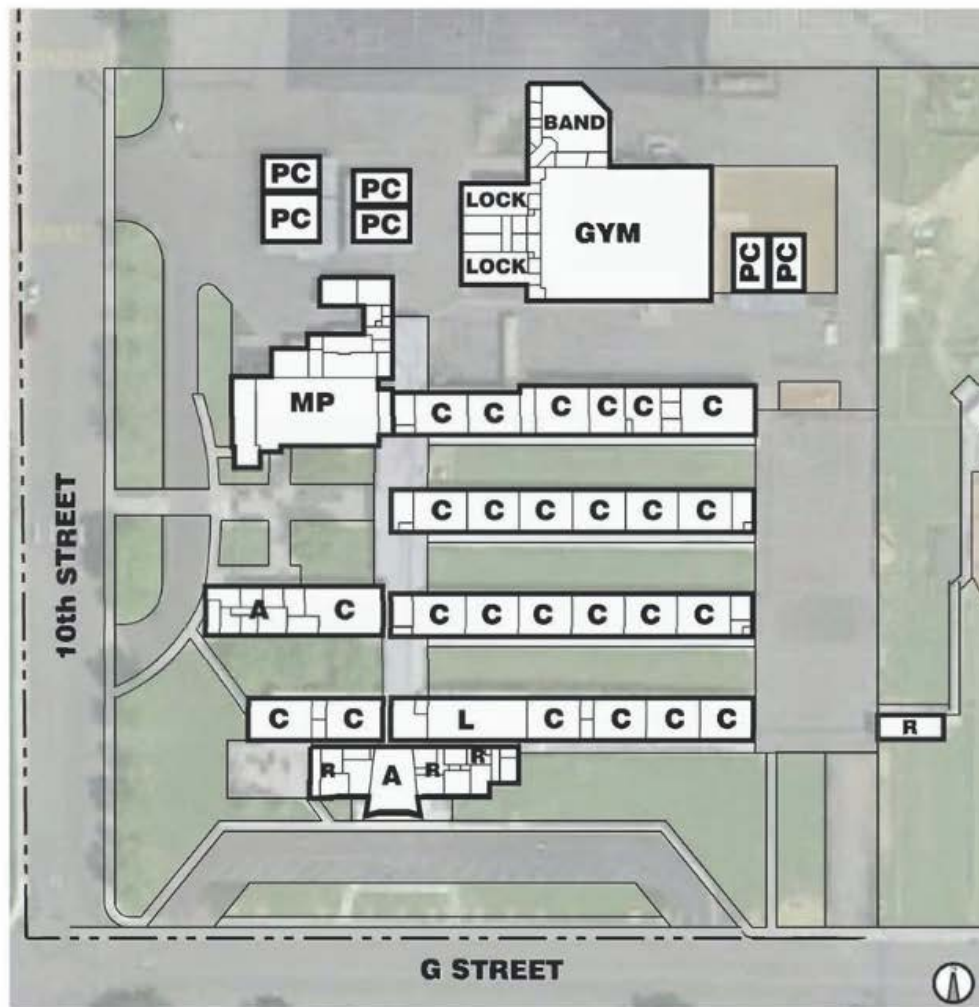
Twin Rivers Unified

RIO LINDA PREPARATORY ACADEMY



Twin Rivers Unified

RIO LINDA PREPARATORY ACADEMY



ABBREVIATIONS:

- A ADMINISTRATION
- C CLASSROOM
- MP MULTI-PURPOSE
- L LIBRARY
- PC PORTABLE CLASSROOM
- PR PORTABLE RESTROOM
- R RESTROOM

SCALE 1" = 100'

Twin Rivers Unified

RIO TIERRA JUNIOR HIGH



Twin Rivers Unified

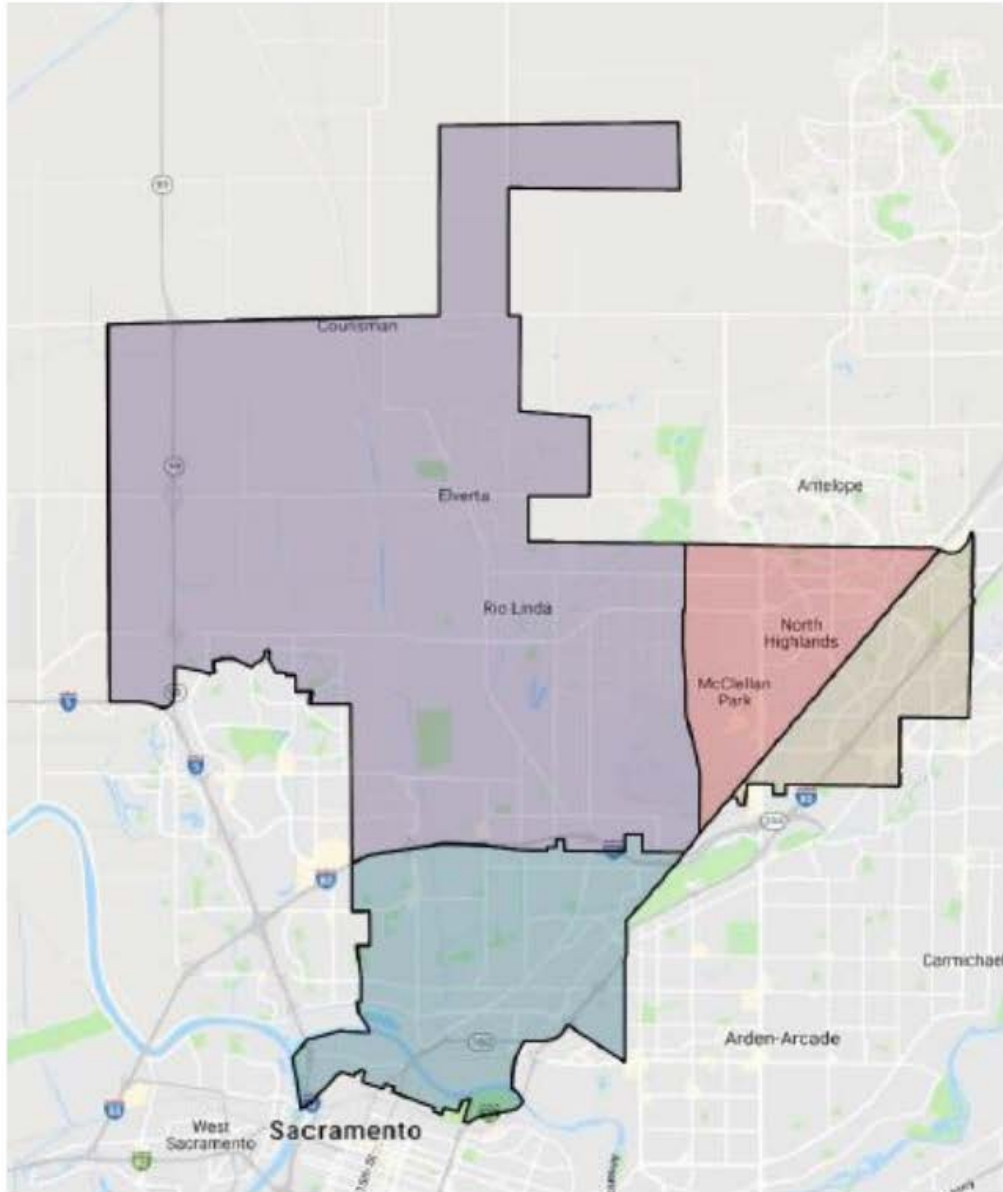
RIO TIERRA JUNIOR HIGH



ABBREVIATIONS:

A ADMINISTRATION
C CLASSROOM
MP MULTI-PURPOSE
L LIBRARY
PC PORTABLE CLASSROOM
PR PORTABLE RESTROOM
R RESTROOM

HIGH SCHOOL BOUNDARIES



Twin Rivers Unified

FOOTHILL HIGH SCHOOL



FOOTHILL HIGH SCHOOL



ABBREVIATIONS:

A	ADMINISTRATION
C	CLASSROOM
K	KINDERGARTEN
MP	MULTI-PURPOSE
L	LIBRARY
PC	PORTABLE CLASSROOM
PR	PORTABLE RESTROOM
R	RESTROOM
S	CTE

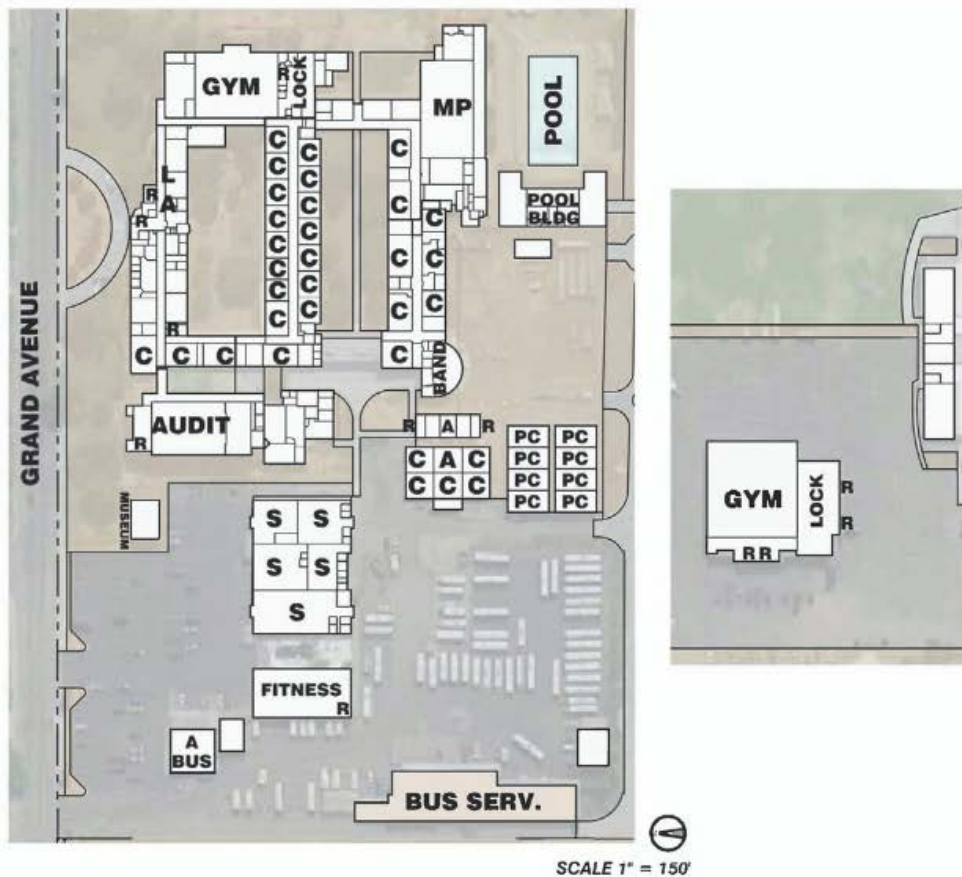
Twin Rivers Unified

GRANT UNION HIGH SCHOOL MAIN CAMPUS



Twin Rivers Unified

GRANT UNION HIGH SCHOOL MAIN CAMPUS

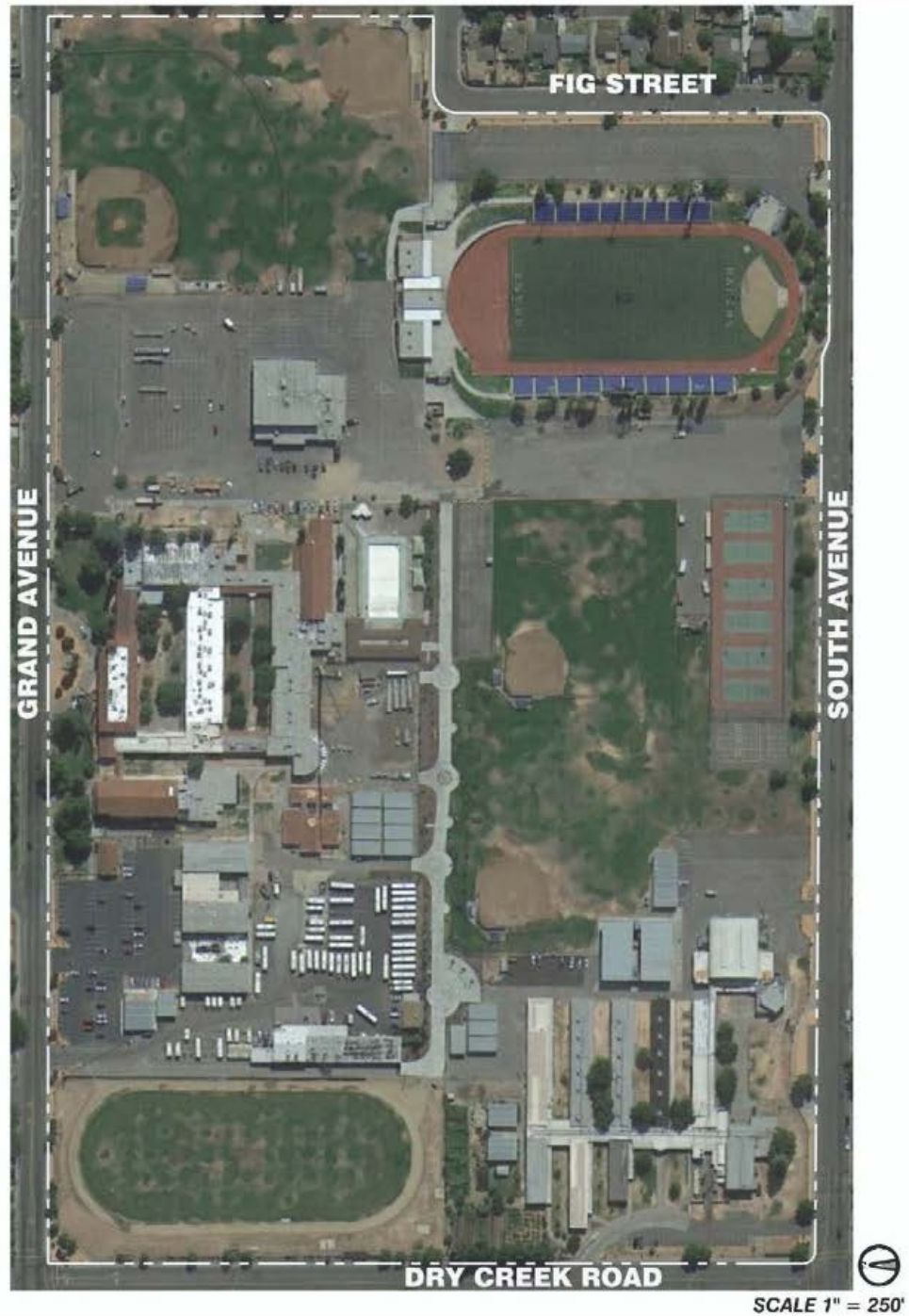


ABBREVIATIONS:

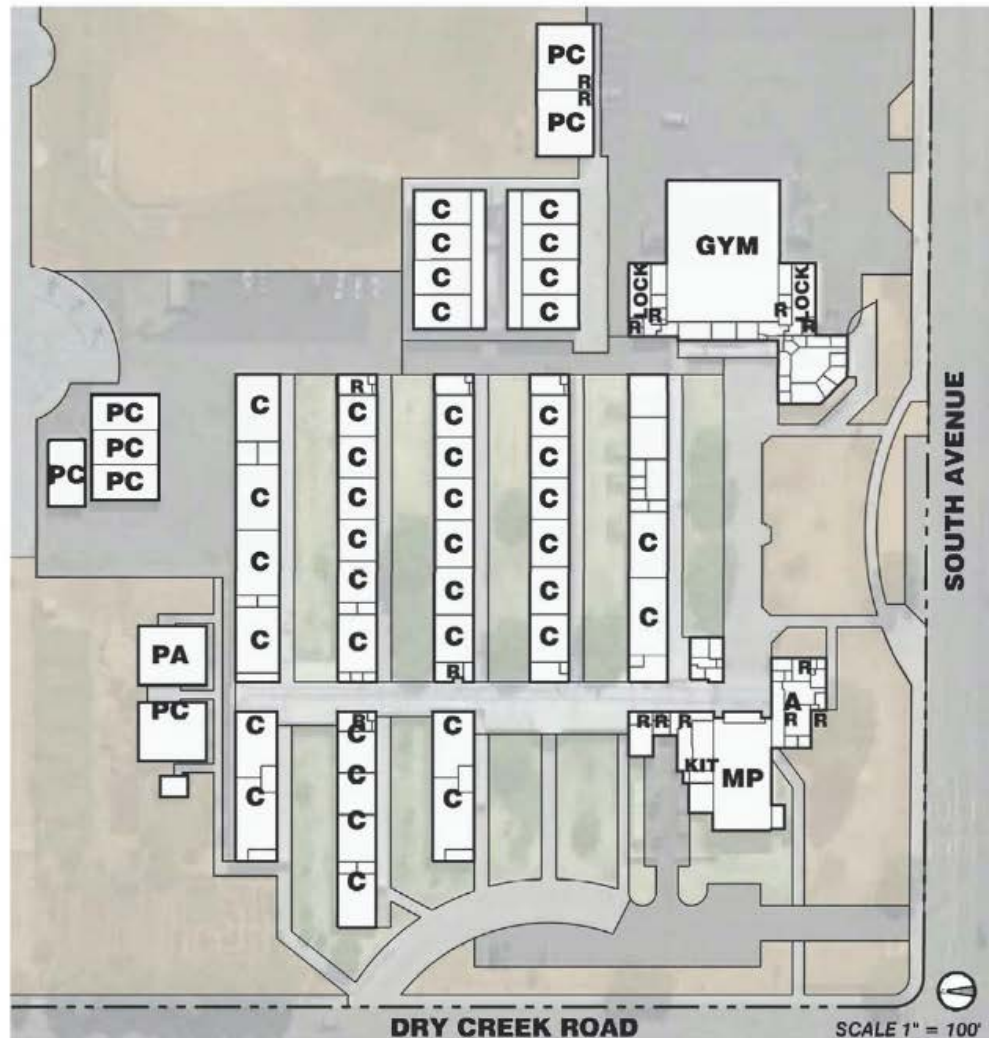
A	ADMINISTRATION
C	CLASSROOM
K	KINDERGARTEN
MP	MULTI-PURPOSE
L	LIBRARY
PC	PORTABLE CLASSROOM
PR	PORTABLE RESTROOM
R	RESTROOM
S	CTE

Twin Rivers Unified

GRANT UNION HIGH SCHOOL WEST CAMPUS



GRANT UNION HIGH SCHOOL WEST CAMPUS



ABBREVIATIONS:

A	ADMINISTRATION
C	CLASSROOM
K	KINDERGARTEN
KIT	KITCHEN
MP	MULTI-PURPOSE
L	LIBRARY
PA	PORTABLE ADMINISTRATION
PC	PORTABLE CLASSROOM
PR	PORTABLE RESTROOM
R	RESTROOM

Twin Rivers Unified

HIGHLANDS HIGH SCHOOL



Twin Rivers Unified

HIGHLANDS HIGH SCHOOL



ABBREVIATIONS:

A ADMINISTRATION
C CLASSROOM
MP MULTI-PURPOSE
L LIBRARY
PC PORTABLE CLASSROOM
PR PORTABLE RESTROOM
R RESTROOM
S CTE

Twin Rivers Unified

RIO LINDA HIGH SCHOOL



Twin Rivers Unified

RIO LINDA HIGH SCHOOL



ABBREVIATIONS:

A	ADMINISTRATION
C	CLASSROOM
K	KINDERGARTEN
MP	MULTI-PURPOSE
L	LIBRARY
PC	PORTABLE CLASSROOM
PR	PORTABLE RESTROOM
R	RESTROOM
S	CTE

