

LOS GATOS UNION SCHOOL DISTRICT

LGUSD SUMMIT 5 - FEBRUARY 12, 2015

IMAGINE 2022 MASTER PLAN & TODAY'S CONTEXT



CODY ANDERSON WASNEY

ARCHITECTS

IMAGINE LGUSD 2022 - FACILITIES MASTER PLAN



TIMELINE
MAY 2012 - DECEMBER 2012

8 WORKSHOPS

24 STAKEHOLDERS

- TEACHERS
- SITE ADMINISTRATION
- PARENTS
- COMMUNITY MEMBERS
- DISTRICT STAFF

IMAGINE LGUSD 2022 MASTER PLANNING GOALS

#1: ADDRESS GROWTH

#2: CREATE COMMUNITY SCHOOLS

#3: ACADEMIC INNOVATION

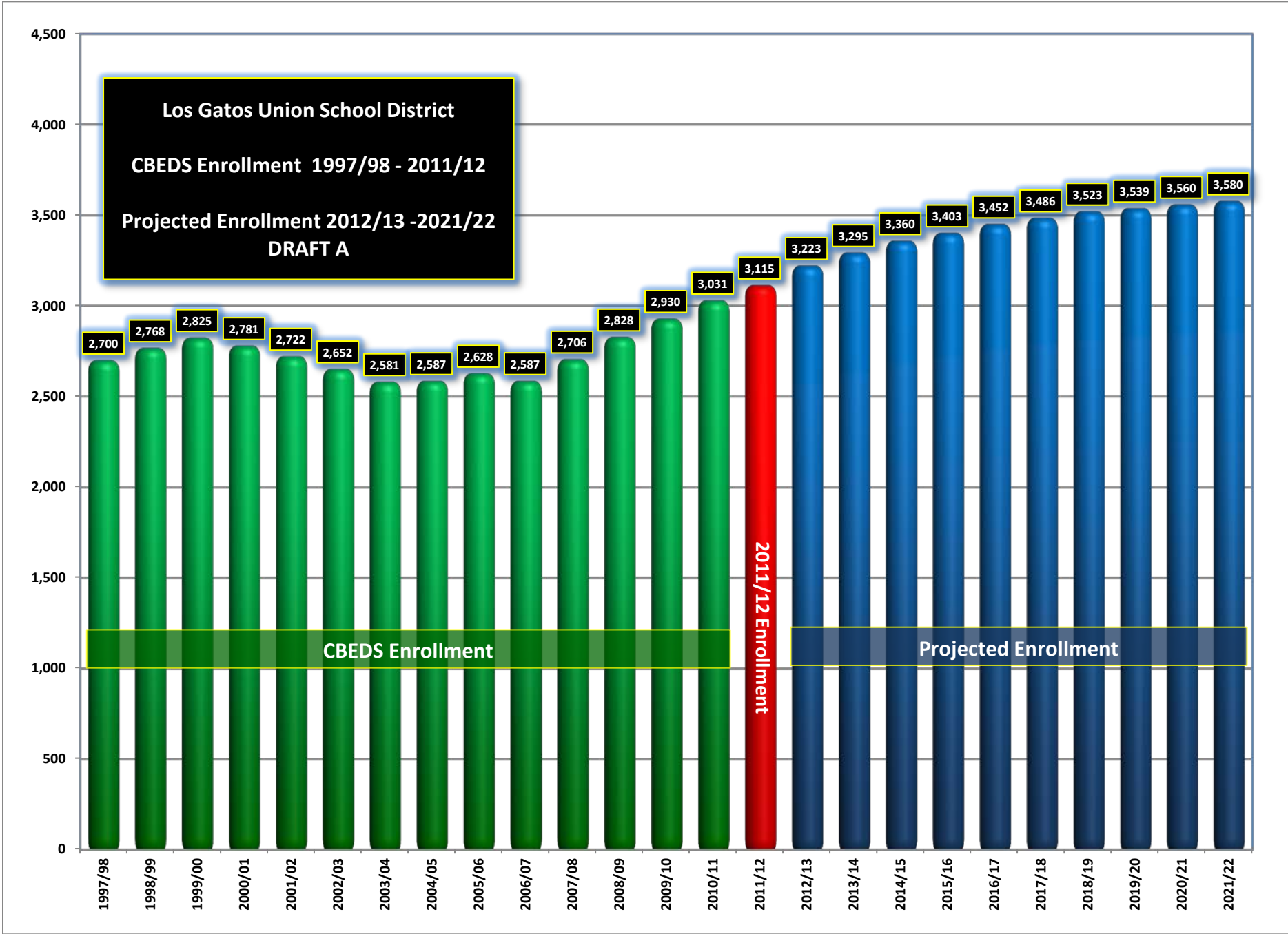
#4: DISTRICT-WIDE COMMUNITY RESOURCES

#5: INFRASTRUCTURE AND FACILITIES UPGRADES

GOAL #1
ADDRESS GROWTH

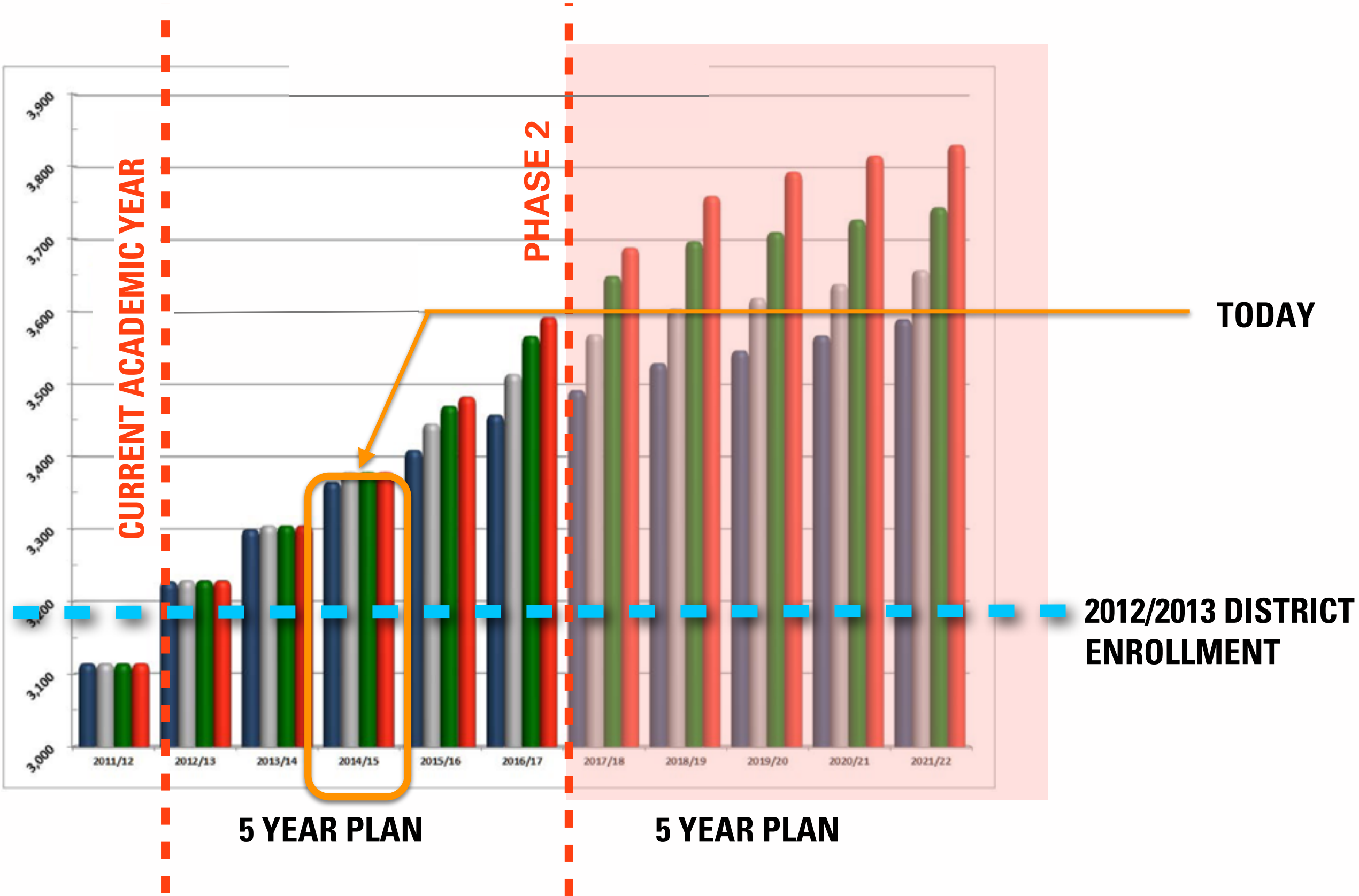
GOAL #1-ADDRESS GROWTH

PAST GROWTH & 10 YEAR PROJECTION



GOAL #1-ADDRESS GROWTH

GROWTH PROJECTION- TWO FIVE YEAR PLANS



GOAL #1-ADDRESS GROWTH

CURRENT GROWTH PROJECTIONS - CURRENT DISTRICT MODEL

	STUDENT CAPACITY	PROJECTED ENROLLMENT	UNHOUSED STUDENTS	CURRENT # CLASSROOMS	CLASSROOMS NEEDED
BLOSSOM HILL	669	723	54	28	2.3
DAVES AVE	550	584	34	23	1.4
LEXINGTON	239	196	-43	11	-1.8
VAN METER	645	741	96	27	4
SUBTOTAL	2103	2244	141	139	5.9
FISHER	1339	1456	117	58	5
DISTRICT TOTAL	3442	3700	258	197	10.9

GOAL #2
CREATING COMMUNITY
SCHOOLS

GOALS OF A COMMUNITY SCHOOL

WHAT WE LEARNED THEN AND WHAT APPLIES TODAY



- REDUCING STUDENT DENSITY AND OVERCROWDING
- “RIGHT-SIZING” CAMPUS AMENITIES
- CREATE TRUE NEIGHBORHOOD SCHOOLS
- FLEXIBILITY TO SUPPORT ACADEMIC INNOVATION
- RE-SIZING FISHER INTO A MIDDLE SCHOOL



GOAL #2-CREATING COMMUNITY SCHOOLS

	COMMUNITY SCHOOL MODEL			ADDITIONAL CLASSROOMS NEEDED		
	STUDENT CAPACITY	PROJECTED ENROLLMENT	UNHOUSED STUDENTS	EXISTING COUNT	COMM. MODEL	STATE MODEL
BLOSSOM HILL	584	723	139	28	6	4.5
DAVES AVE	484	584	100	23	4	4
LEXINGTON	222	196	-26	11	-1	-4
VAN METER	564	741	177	27	7	10
SUBTOTAL	1854	2244	390	139	16.4	14.5
FISHER	1008	1456	448	58	19	19
DISTRICT TOTAL	2862	3700	838	197	35.4	33.5

GROWTH SOLUTIONS - 4 SCENARIOS

	PROS	CONS
1: BUILD NEW SCHOOL ON NEW SITE	FLEXIBLE E.S. & M.S. SOLUTION	CHALLENGING LAND ACQUISITION

GROWTH SOLUTIONS - 4 SCENARIOS

	PROS	CONS
1: BUILD NEW SCHOOL ON NEW SITE	FLEXIBLE E.S. & M.S. SOLUTION	CHALLENGING LAND ACQUISITION
2A: EXPAND FISHER	NO SITE EXPANSION REQUIRED	M.S.-ONLY SOLUTION

GROWTH SOLUTIONS - 4 SCENARIOS

	PROS	CONS
1: BUILD NEW SCHOOL ON NEW SITE	FLEXIBLE E.S. & M.S. SOLUTION	CHALLENGING LAND ACQUISITION
2A: EXPAND FISHER	NO SITE EXPANSION REQUIRED	M.S.-ONLY SOLUTION
2B: CREATE SMALL SCHOOL SITE ON FISHER PROPERTY	FLEXIBLE E.S. SOLUTION	DENSIFIES FISHER SITE

GROWTH SOLUTIONS - 4 SCENARIOS

	PROS	CONS
1: BUILD NEW SCHOOL ON NEW SITE	FLEXIBLE E.S. & M.S. SOLUTION	CHALLENGING LAND ACQUISITION
2A: EXPAND FISHER	NO SITE EXPANSION REQUIRED	M.S.-ONLY SOLUTION
2B: CREATE SMALL SCHOOL SITE ON FISHER PROPERTY	FLEXIBLE E.S. SOLUTION	DENSIFIES FISHER SITE
2C: CONVERT FISHER TO 5-8 SCHOOL	SOLVES E.S. & M.S. GROWTH	HIGH FISHER ENROLLMENT

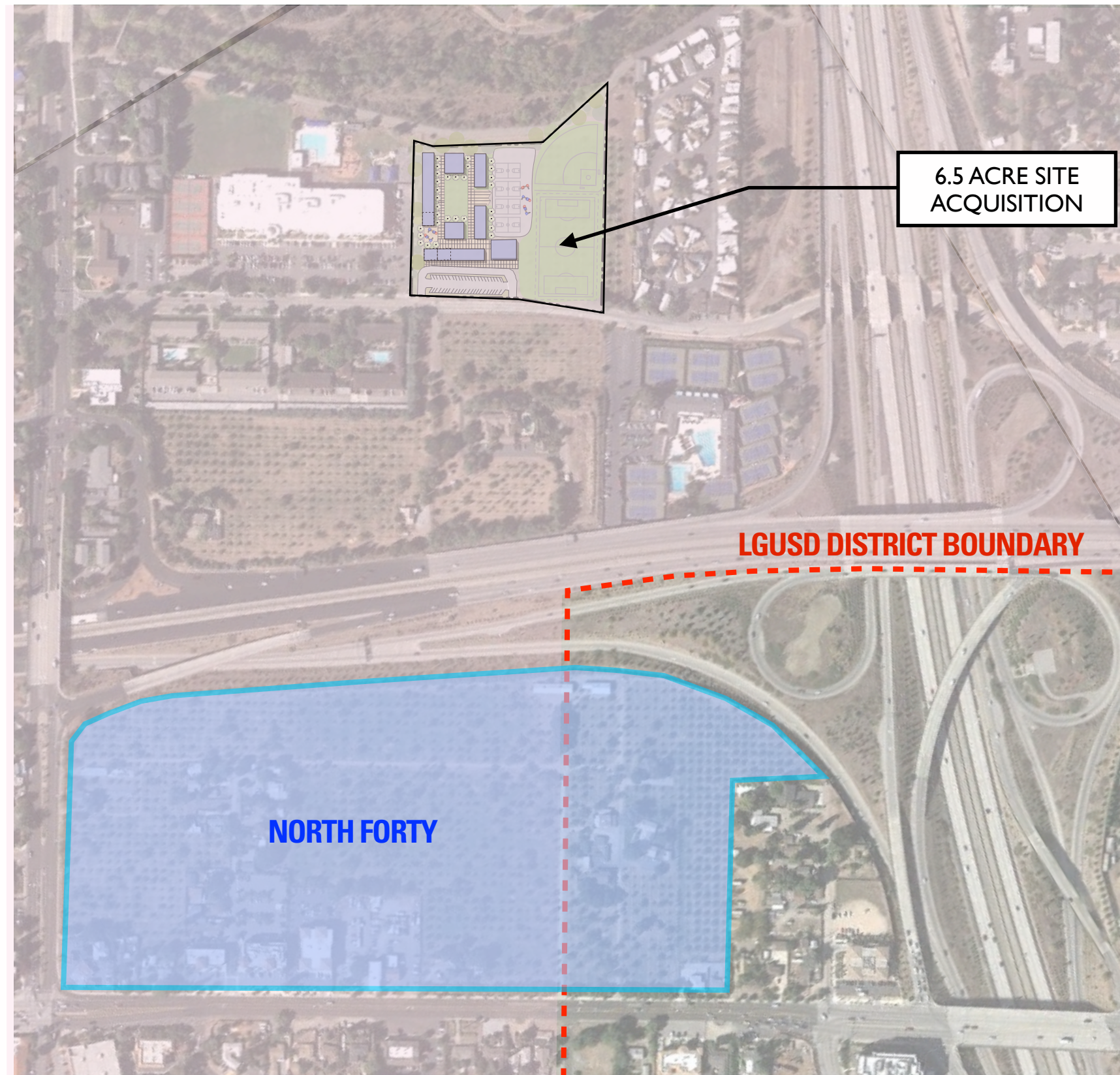
GOAL #2-CREATING COMMUNITY SCHOOLS

GROWTH SOLUTIONS - POTENTIAL PROPERTY



GOAL #2-CREATING COMMUNITY SCHOOLS

GROWTH SOLUTIONS - POTENTIAL PROPERTY



GROWTH SOLUTIONS

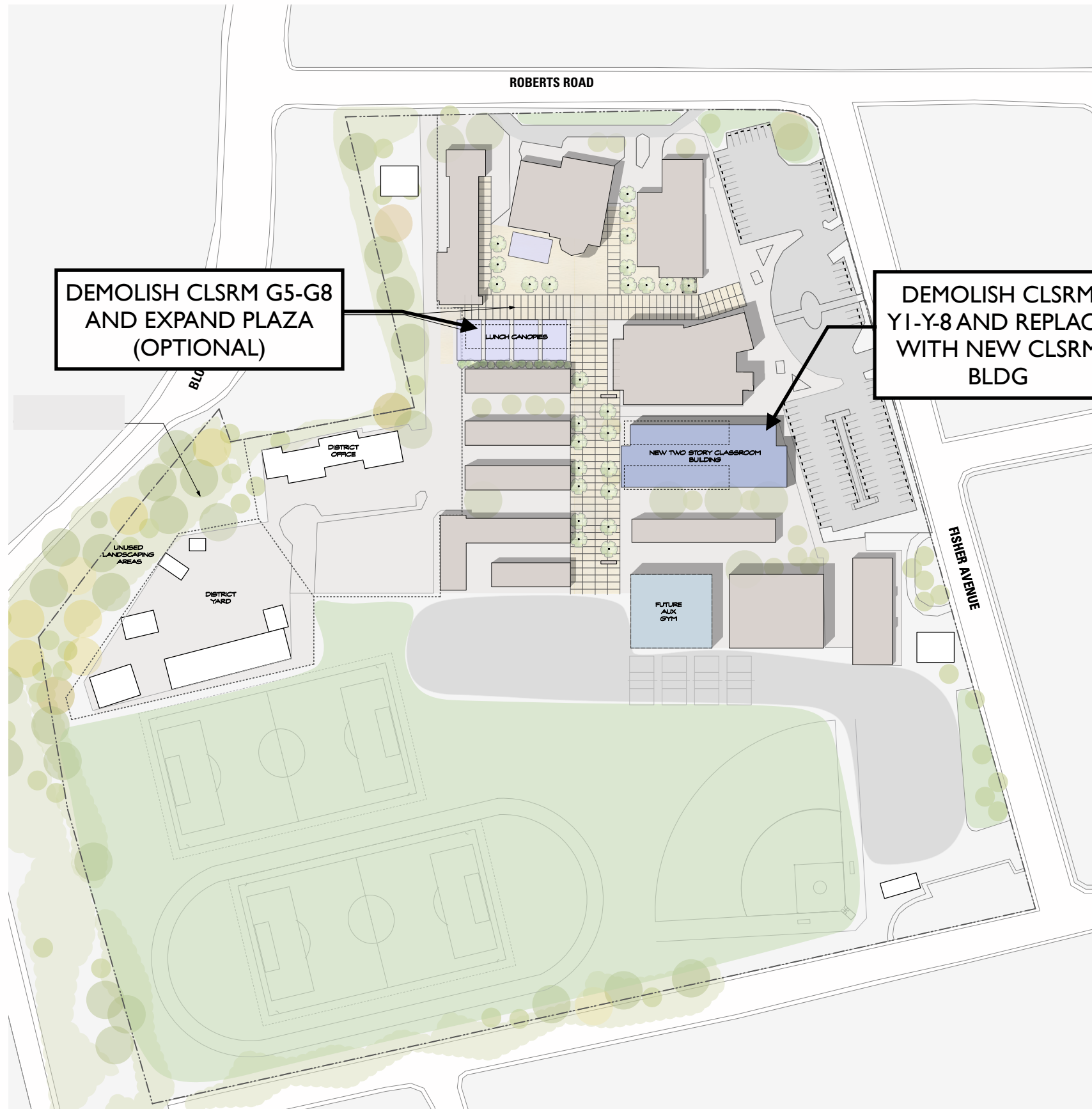
OPTION #1 NEW SCHOOL SITE



- ACADEMIC PROGRAM NOT YET DEFINED
- CAPACITY FOR E.S. & M.S. GROWTH
- NO FISHER EXPANSION
- COSTLY & CHALLENGING LAND ACQUISITION

GROWTH SOLUTIONS

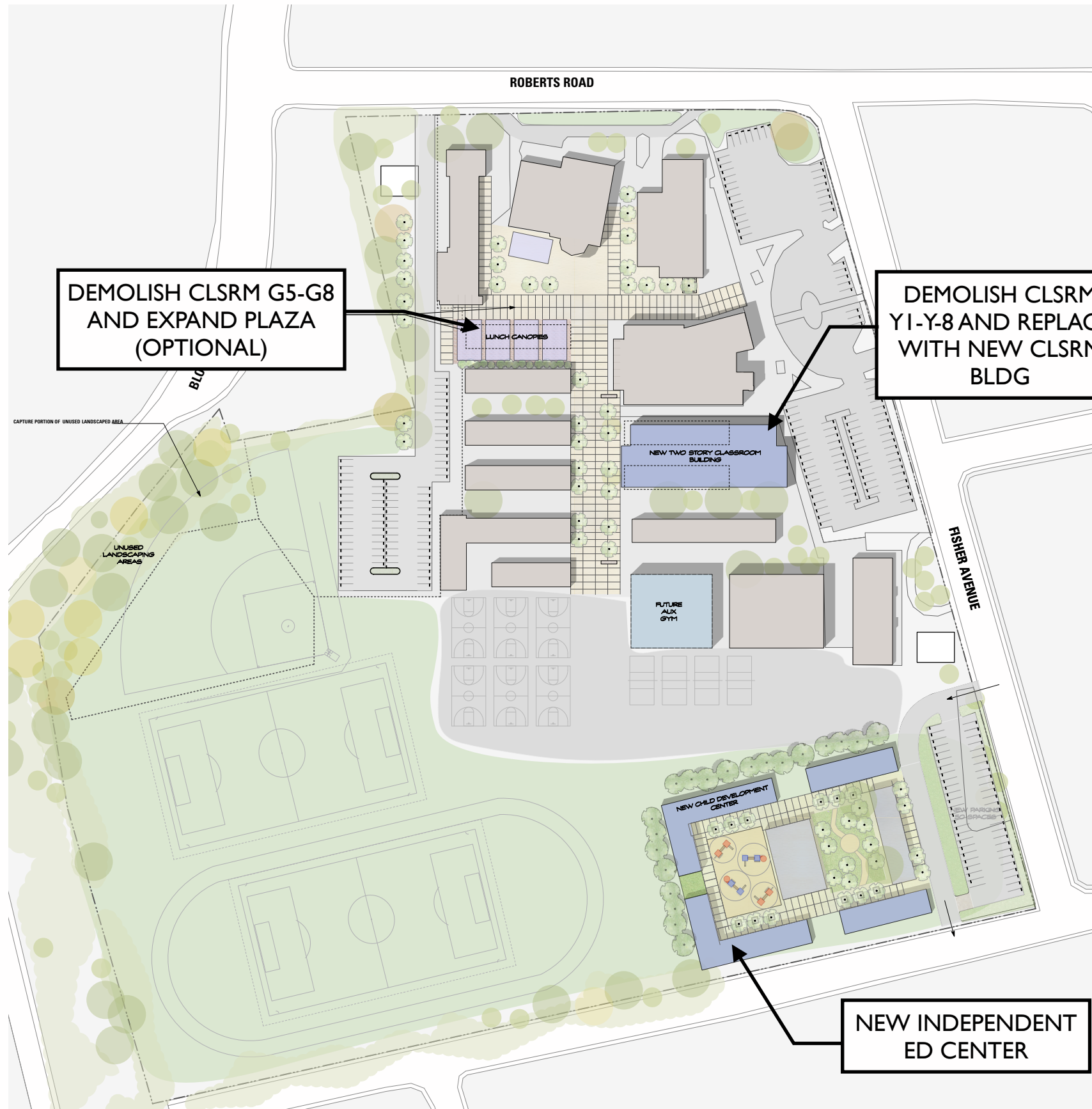
OPTION #2A EXPAND FISHER



- NET INCREASE 10 CLASSROOMS
- EXISTING FISHER CAPACITY 1149
- NEW FISHER CAPACITY 1349

GROWTH SOLUTIONS

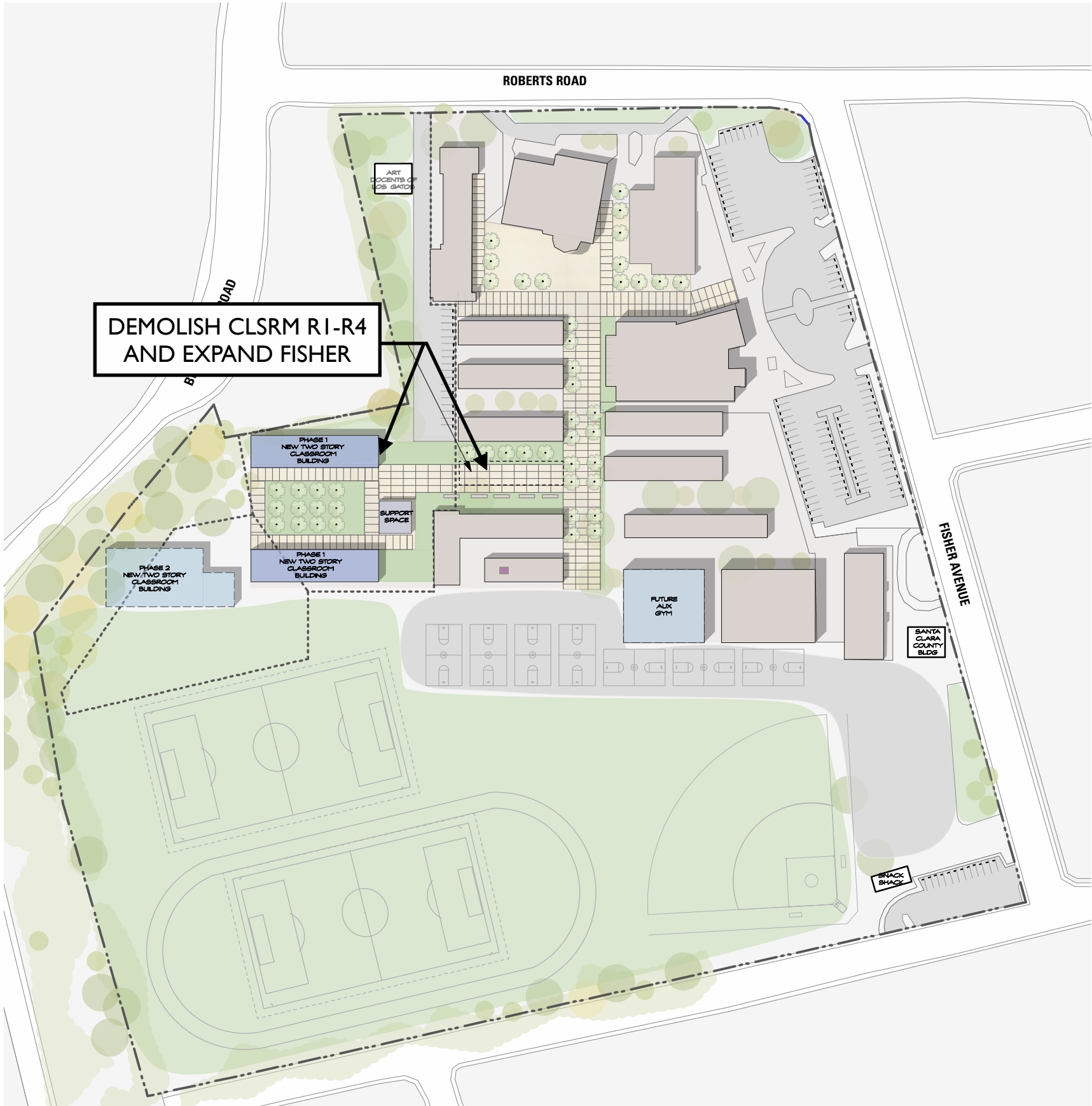
OPTION #2B INDEPENDENT EDUCATION CENTER AT FISHER



- RELOCATES DISTRICT OFFICE
- EDUCATION CENTER 10-15 CLASSROOM CAPACITY
- SHARED FIELD ACCESS IF REQUIRED BY PROGRAM
- ACADEMIC PROGRAM NOT YET DEFINED

GROWTH SOLUTIONS

OPTION #2C EXPAND FISHER MIDDLE SCHOOL TO 5-8 SCHOOL



- RELOCATES DISTRICT OFFICE
- ADDS DISTRICT-WIDE 5TH GRADE
- POTENTIAL SCHOOL WITHIN A SCHOOL
- FISHER CAPACITY COULD REACH 1700