



Item N2: School Closure

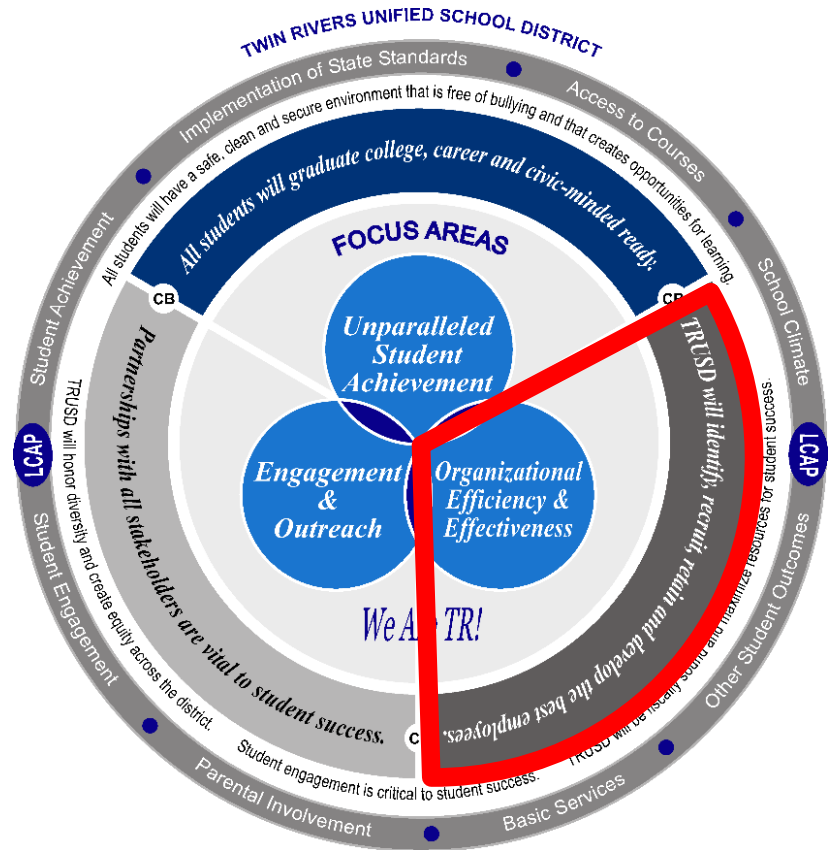
Item N3: School Consolidation

Item N4: School Reconfiguration

Dr. Kristen Coates, Associate Superintendent,
School Leadership
January 28, 2020

Twin Rivers Unified School District: Inspiring each student to extraordinary achievement every day!





Twin Rivers Unified School District: Inspiring each student to extraordinary achievement every day!



Overview

- Review a brief history of Twin Rivers Unified and the budget concerns
- Share Student Housing Committee and stakeholder forum processes
- Present District Recommendations for action



We Must Address The Challenges That we Face

- Enrollment declined more than 4% in 5 years
- We already cut more than \$16.9 million from a \$300 million budget, but we must cut more
 - There is projected ongoing deficit of \$5.7 million annually (\$3.7 million if the Governor's Budget proposal for Special Education is approved in June 2020)
- We have smaller schools than other districts
- We have more school configurations than other districts

Most of the Twin Rivers budget pays for our staff

Experts predict there is a 50% chance of a recession within the next 2 years

Twin Rivers Unified School District: *Inspiring each student to extraordinary achievement every day!*



Student Enrollment has Declined for Many Years

Student enrollment without charter schools

**26,754
students
enrolled**

Enrollment is declining 6%
in 8 years

Declining enrollment reduced the budget
available for schools and programs by
\$16,430,000

-359

-283

-24

+9

+65

-468

-303

-280

People are Leaving California in Higher Numbers than New Residents are Coming to California

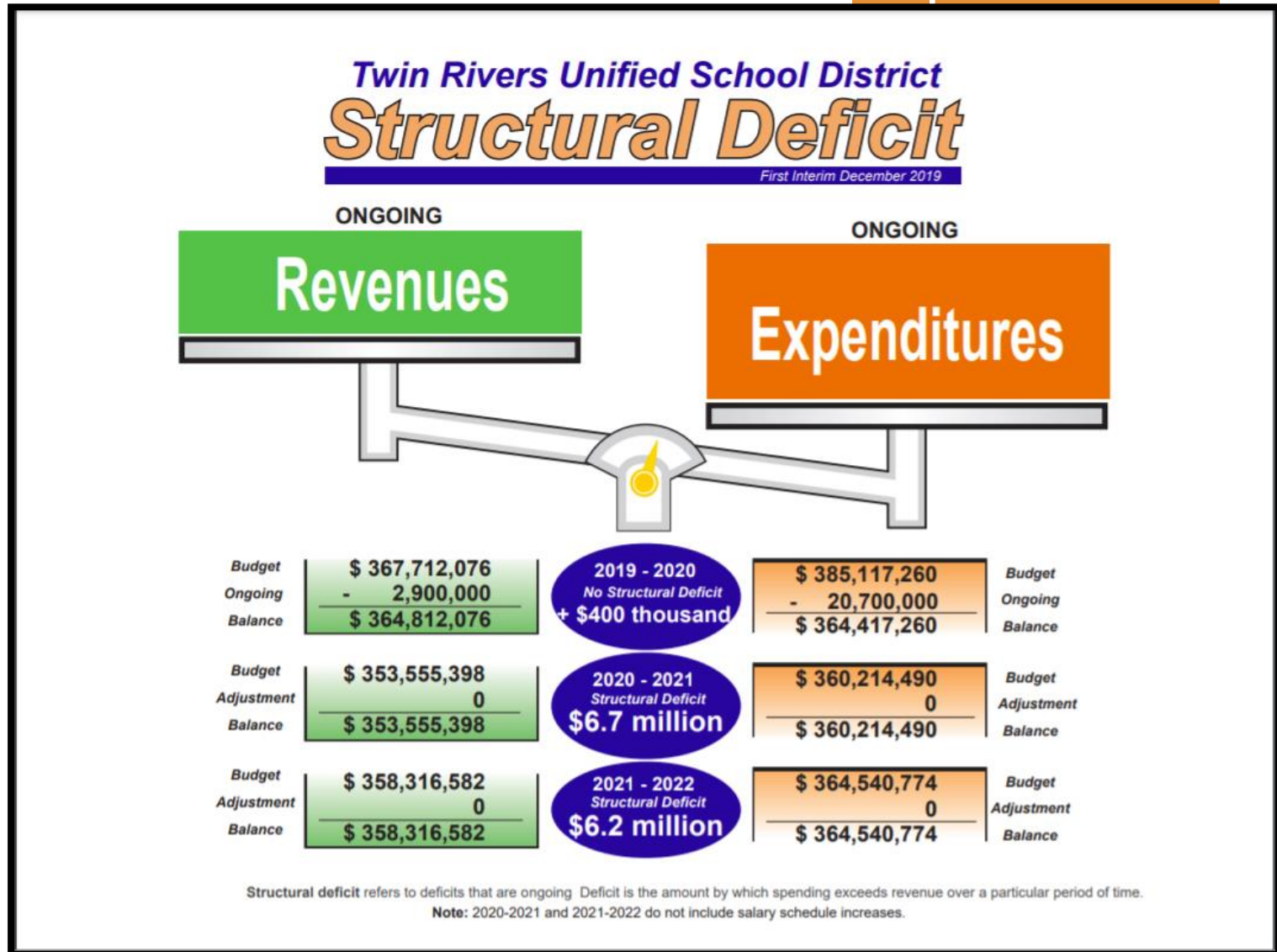


A 2017 SacBee study found that people leaving California tended to be relatively poor and many lacked college degrees.

More higher income people have come to California than have left California.

On average, since 2001 about 130,000 more people leave California than come to California

Twin Rivers has an Ongoing Structural Deficit Because our Expenditures



Structural deficit refers to deficits that are ongoing. Deficit is the amount by which spending exceeds revenue over a particular period of time. Note that the 2020-2021 and 2021-2022 budgets do not include salary schedule increases.

We have More Grade Configurations than Other Districts

Number of Different Types of Schools

- Twin Rivers: 15
- Sac City: 11
- San Juan: 10
- Elk Grove: 7
- Folsom Cordova: 7
- Natomas: 7

Type	# of Schools
K	1
K-2	1
K-4	2
K-5	1
K-6	18
K-8	7
3-6	1
5-8	2
6-8	1
7-8	7
7-9	1
7-12	2
9-12	6
10-12	1
12	1

It costs much more to support so many different grade configurations

It also reduces resources for all of our schools and programs

Twin Rivers Unified School District: *Inspiring each student to extraordinary achievement every day!*



We have Smaller Schools than Other Districts

Average enrollment per school

- Elk Grove: 959
- Natomas: 709
- Folsom Cordova: 651
- San Juan: 620
- Sac City: 596
- Twin Rivers: 543

School Size	Number
Over 1,000	3
900 to 1000	0
800 to 900	0
700 to 800	3
600 to 700	6
500 to 600	9
400 to 500	9
300 to 400	8
Less than 300	6

52% of TRUSD schools have fewer than 500 students

Only 7% have more than 800 students

Twin Rivers Unified School District: *Inspiring each student to extraordinary achievement every day!*



TRUSD is Not Unique - Many Districts are Facing School Closures

EDUCATION

San Jose: Three Evergreen elementary schools to close due to deficit

by Carina Wouda

OCTOBER 12, 2019

East Palo Alto: Ravenswood Schools

Facing a financial deficit of \$1.35 million, school officials are set to close two elementary schools

Pasadena School Board Eyes Further School Closures Over Declining Enrollment

October 16, 2019 at 2:12 am

Filed Under: Pasadena School District

Planned school closures
parents, teachers and community

District looking to close or merge as many as 24 schools in the next five years

Monterey Peninsula USD considers closing school as enrollment declines

JAN 22, 2020

Despite rumors to the contrary, Highland Elementary School is not set to close in the coming days according to a message Principal Hecate Rosewood wrote to the school community Friday.

SURF CITY SCHOOL DISTRICT MAY CLOSE SITE, Sale of two Valley schools \$9.8 million

FIRE TEACHERS, OUST 750 TRANSFERS - ORAN COUNTY REGISTER

By Syreeta Palme - January 1

SCHOOL CHOICE

Closing a middle school and converting others to K-8 stirs opposition

JANUARY 17, 2020

The school board and others in West Contra Costa Unified did not approve a plan to convert six elementary schools into K-8 schools next year.

THERESA HARRINGTON

San Rafael School To Close Due To Declining Enrollment Trend In Marin County

October 16, 2019 at 6:24 pm

Filed Under: Mill Valley, San Rafael, School Closure, School District, Short Elementary School



Our Neighbor is Facing a Serious Budget Crisis

B Sacramento Bee

Sacramento City Unified's revised budget rejected once again as reserves 'fall short'

Sacramento City Unified School District's revised 2019-20 budget has been disapproved by the county Office of Education, district officials said ...

1 week ago

B Sacramento Bee

Your primer to the Sac City Unified budget crisis – how did we get to now?

Sacramento City Unified School District is chipping away at expenses in a last-ditch effort to close its \$35 million budget gap, but time is running ...

Mar 10, 2019

B Sacramento Bee

Sacramento City Unified to lay off more than 170 staff members amid budget crisis

Amid financial crisis, Sacramento City Unified School District ... claimed the district unlawfully engaged in discussions regarding budget cuts in ...

May 8, 2019

Capital Public Radio News

Sacramento City Unified Schools Budget Rejected Again

The Sacramento City Unified School District has been ordered to deliver a new budget that accounts for a \$24 million deficit by October 8.

1 month ago

B Sacramento Bee

Sacramento City Unified approves budget that relies on reserves – and faces county rejection

The Sacramento City Unified School District on Thursday night approved adoption of its budget for the upcoming school year – despite concern ...

Jun 21, 2019

B Sacramento Bee

Sacramento City Unified school budget rejected again. Immediate cuts recommended

The Sacramento City Unified School District announced on Friday that their budget was rejected by county school officials again. In a letter to ...

1 month ago

Twin Rivers Unified School District: *Inspiring each student to extraordinary achievement every day!*



Board of Trustee's Resolution 756 is Responsible Fiscal Management

- The Board has a fiduciary duty to meet its financial obligations in the current year and two years out
- It is projected that the district will need to implement ongoing budget reductions in 2019-2020 and 2020-2021 to maintain fiscal stability

Board Resolution 756

- Recognizes the budget reductions implemented in 2018-2019
- Identifies and implements budget reductions for 2019-2020
- Requires list of budget reductions for 2020-2021 to be included in the 2019-2020 Second Interim Report in March 2020

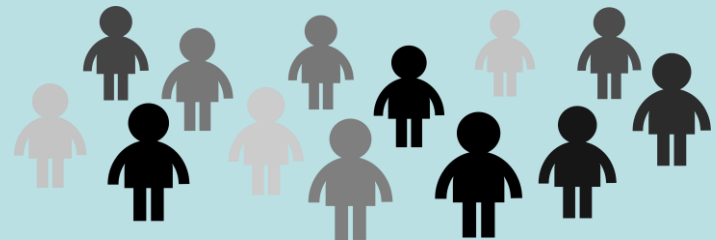
Submitted to Dave Gordon, Superintendent, Sacramento County Office of Education

Twin Rivers Unified School District: *Inspiring each student to extraordinary achievement every day!*



- Student Housing Committee
- Board Input
- Community Forums
- Employee Forums

Stakeholder Feedback



Student Housing Committee Met Multiple Times in 2019



Twin Rivers Unified School District: *Inspiring each student to extraordinary achievement every day!*



Opportunities for Feedback

- Board Input

- Jan 29, 2019 Adopt formation of Student Housing Committee
- Feb 26, 2019 Approve Committee Applications
- Mar 26, 2019 Approve Committee Attendance Requests
- May 7, 2019 Review Board Policy on School Configuration
- May 21, 2019 Present School Configuration Survey via Thought Exchange
- June 11, 2019 Discuss Thought Exchange Results
- June 25, 2019 Discuss Board Policy Grade Configuration
- July 2, 2019 Adopt Board Policy 7112 School Capacity
- Nov 5, 2019 Present SHC Report and Community Forum dates

- Community Forums

- Nov 6, 2019 Foothill High School
- Nov 12, 2019 Highlands High School
- Nov 13, 2019 Grant Union High School
- Nov 14, 2019 Rio Linda High School
- Dec 3, 2019 Rio Tierra Junior High
- Dec 6, 2019 Martin Luther King Academy

- Employee Forums (Employee Rights)

- Jan 21, 2020 Grant Union High School
- Jan 22, 2020 Rio Linda Prep
- Jan 23, 2020 Creative Connections
- Jan 27, 2020 District Office

Twin Rivers Unified School District: *Inspiring each student to extraordinary achievement every day!*



Board Policy 7112, approved July 2, 2019

1. The projected general education enrollment is below the permanent design capacity for elementary school students as outlined in Exhibit No. 7112 (x)
2. The projected general education enrollment for grades K - 8 is below 75 per grade level.
3. There is no opportunity for growth to occur within the existing boundary.
4. If the existing boundary is expanded, it will negatively impact neighboring school boundaries.
5. Home to school transportation is currently provided.
6. There is insufficient teaching staff to provide effective co-curricular programs.
7. There are not enough students to have a viable co-curricular program.
8. The academic achievement of the students is not high enough to provide opportunity for success at the next level.
9. There are not enough students to provide an appropriate number of staff for the school.
10. The student enrollment is so low that other schools must provide additional staff to the small school.
11. There is community support from the school to reorganize or close the school.
12. The projected expense to renovate the school is higher than other schools.
13. There is a viable use for the facility if the school is reorganized.
14. There is a viable use for the facility if the school is closed.

6 Elementary Schools met criteria for closure and 4 schools met criteria for grade changes

Twin Rivers Unified School District: *Inspiring each student to extraordinary achievement every day!*



Board Policy 7112, approved July 2, 2019

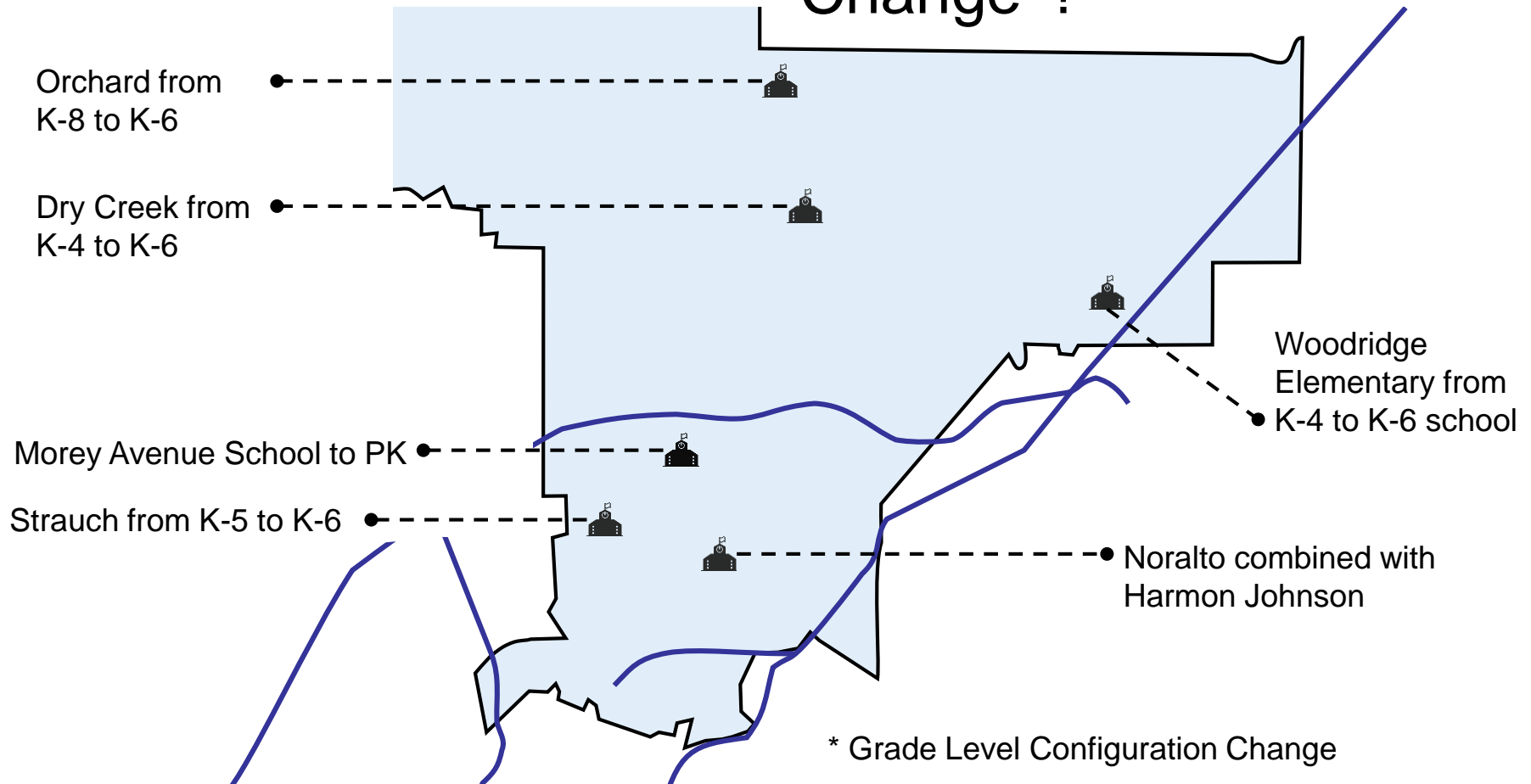
1. The projected general education enrollment is below the permanent design capacity for intermediate school students as outlined in Exhibit No. 7112 (x)
2. The projected general education enrollment for grade level is below 400 per grade level.
3. There is no opportunity for growth to occur within the existing boundary.
4. If the existing boundary is expanded, it will negatively impact neighboring school boundaries.
5. Home to school transportation is currently provided.
6. There is insufficient teaching staff to provide effective co-curricular programs.
7. There are not enough students to have a viable co-curricular program.
8. The academic achievement of the students is not high enough to provide opportunity for success at the next level.
9. There are not enough students to provide an appropriate number of staff for the school.
10. The student enrollment is so low that other schools must provide additional staff to the small school.
11. There is community support from the school to reorganize or close the school.
12. The projected expense to renovate the school is higher than other schools.
13. There is a viable use for the facility if the school is reorganized.
14. There is a viable use for the facility if the school is closed.

1 Intermediate school met criteria for closure and 5 for grade changes or movement

Twin Rivers Unified School District: *Inspiring each student to extraordinary achievement every day!*



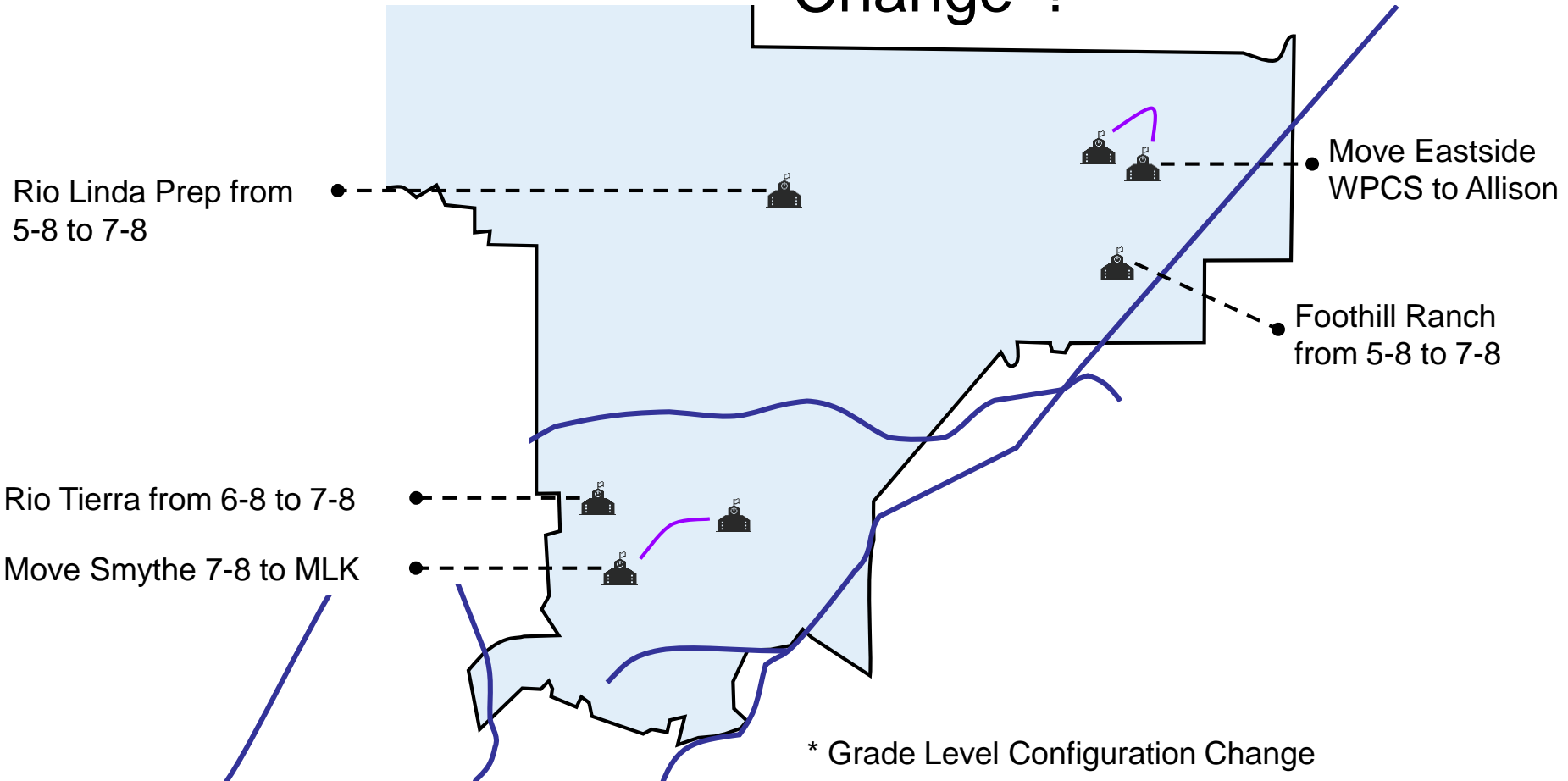
Which Elementary Schools are District Administration Recommending to Change*?



Twin Rivers Unified School District: *Inspiring each student to extraordinary achievement every day!*



Which Intermediate Schools are District Administration Recommending to Change*?



Twin Rivers Unified School District: *Inspiring each student to extraordinary achievement every day!*



Closing Schools is Projected to Save ²⁰ TRUSD \$3,000,000 Annually

- Combine Pacific, Vista Nueva, and Nova
\$250,000
- Combine Noralto K-2 with Harmon Johnson
\$500,000
- Close Babcock Elementary
\$500,000
- Close Fairbanks Elementary
\$500,000
- Close Hillsdale Elementary
\$500,000
- Close Sierra View Elementary
\$500,000
- Close MLK Jr. Technology Academy (First Year)
\$250,000

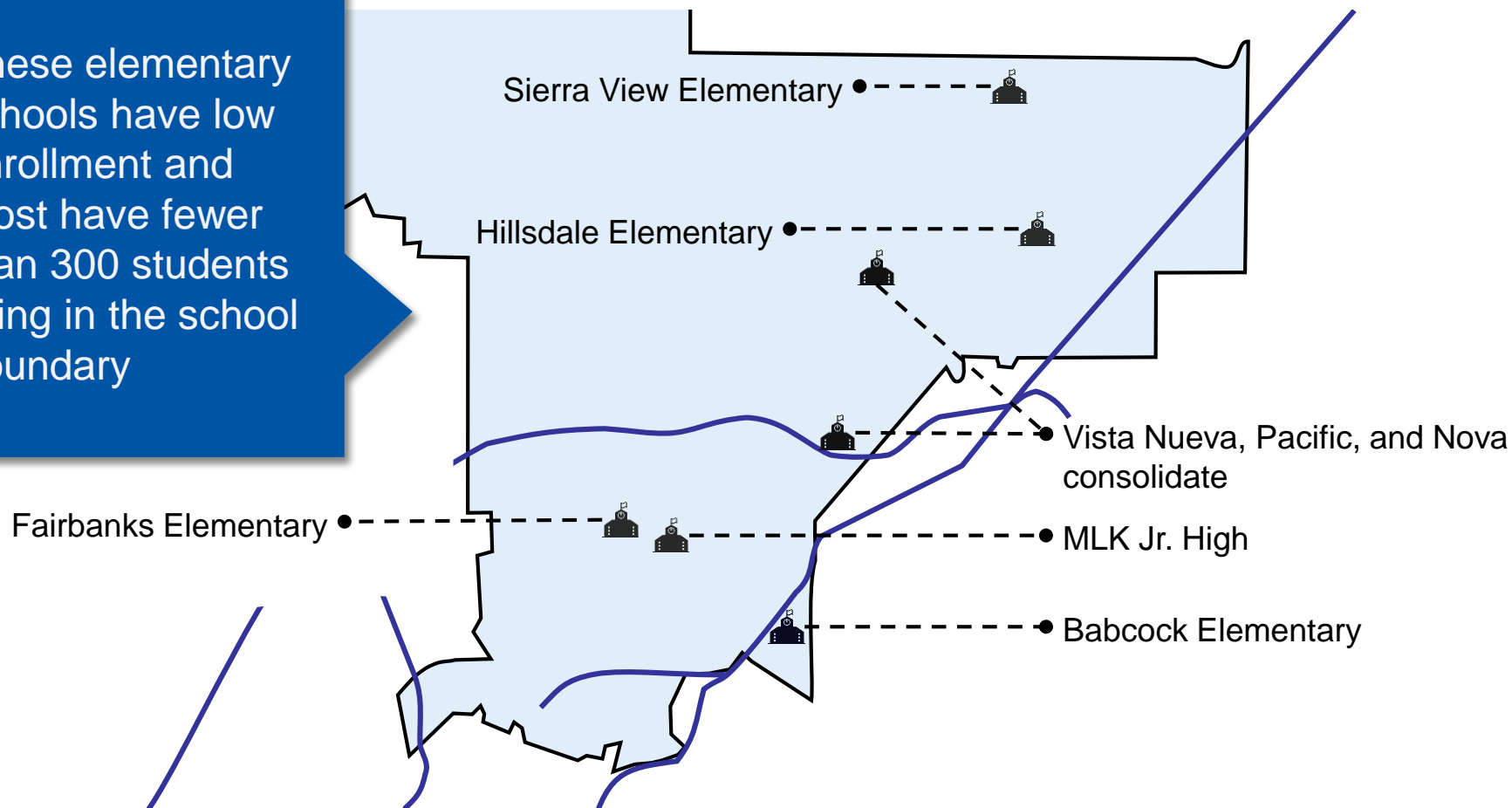
A 2001 Pew analysis of six major districts nationwide found that the average annual savings in the years immediately following closure were under \$1 million per building. Twin Rivers estimates \$500,000 per school.

Twin Rivers Unified School District: *Inspiring each student to extraordinary achievement every day!*



Which Schools are District Administration Recommending to Close?

These elementary schools have low enrollment and most have fewer than 300 students living in the school boundary



Twin Rivers Unified School District: *Inspiring each student to extraordinary achievement every day!*



School Reconfigurations

School	Effective Date	Resolution #
Morey Avenue ECDE only TK & K to their schools of residence	Effective 2020-21	813
Dry Creek from K-4 to K-6 over two years	Effective 2020-21	814
Orchard Elementary from K-8 to K-6 over two years	Effective 2020-21	815
Strauch Elementary K-5 to K-6	Effective 2020-21	816
Woodridge Elementary from K-4 to K-6 over two years	Effective 2020-21	817
Foothill Ranch from 5-8 to 7-8	Effective 2020-21	818
Rio Linda Prep from 5-8 to 7-8 over two years	Effective 2020-21	819
Rio Tierra from 6-8 to 7-8	Effective 2020-21	820

School Consolidations

School	Effective Date	Resolution #
Consolidate Noralto and Harmon Johnson to K-6	Effective 2020-21	821
Consolidate Vista Nueva, Pacific and Nova on one campus	Effective 2020-21 Year	822

Consolidation refers to one single administration in mutiple buildings

School Closures

School	Effective Date	Resolution #
Close Babcock, students go to Northwood Elementary	Effective 2021-22	823
Close Fairbanks, students go to Del Paso and Castori	Effective 2021-22	824
Close Hillsdale, students go to Ridgepoint K-6 and Kohler K-8	Effective 2021-22	825
Close Sierra View, students go to Village and Ridgepoint	Effective 2021-22	826
Close MLK, students go to Rio Tierra 7-8 over two years, Southern Region	Effective 2021-22	827
Move Smythe 7-8 to MLK	Effective 2021-22	828
Move Eastside WPCS from Hillsdale to Allison	Effective 2021-22	829

Student Housing Committee – School Closures

	Yes	No
Close Babcock, students go to Northwood Elementary	2	7
Close Fairbanks, students go to Del Paso and Castori	2	7
Close Hillsdale, students go to Allison K-6 and Kohler K-8	2	7
Close Noralto, students go to Harmon Johnson and surrounding schools	3	6
Close Sierra View, students go to Village and Ridgepoint	2	7
Close MLK, students go to Rio Tierra 7-8 over two years, Southern Region	4	5
Move Eastside WPCS from Hillsdale to Allison	3	6

Student Housing Committee – School Consolidation

	Yes	No
Close Noralto, students go to Harmon Johnson and surrounding schools	3	6
Consolidate Vista Nueva, Pacific and Nova on one campus	4	5

Student Housing Committee

	Yes	No
Morey Avenue ECDC TK & K to their schools of residence	6	3
Dry Creek from K-4 to K-6 over two years	9	0
Orchard Elementary from K-8 to K-6 over two years	8	1
Strauch Elementary K-5 to K-6	9	0
Woodridge Elementary from K-4 to K-6 over two years	9	0
Foothill Ranch from 5-8 to 7-8 over two years	9	0
Rio Linda Prep from 5-8 to 7-8 over two years	9	0
Rio Tierra from 6-8 to 7-8	9	0
Move Smythe 7-8 to MLK in 2021-22 school year	3	6
Move Eastside WPCS from Hillsdale to Allison	3	6

Forum Questions

What about transportation issues to new school sites? Transportation will be provided as outlined in Board Policy.

What new facilities will be provided to schools that might enroll new students? Facilities will be modified to meet the needs of additional students or new grade levels.

What measures will take place to ensure the safety of students? Safety continues to be a priority in Twin Rivers. Site safety teams will continue to work to provide local safety plans, which are supported by the Twin Rivers USD Police Department.

All comments, questions, and information presented are available on the Twin Rivers website

Inspiring each student to extraordinary achievement every day!



Student Housing Forum FAQ Responses

On Nov. 6, 12, 13, 14 and Dec. 3 & 4, 2019, Twin Rivers Unified held a series of Community Meetings on School Consolidations at Foothill High, Highlands High, Grant Union High, Rio Linda High, Rio Tierra Jr. High and Martin Luther King Jr. Technology Academy.

We've compiled this list of the most frequently asked questions along with the responses.

Where will students end up?

Once the Board of Trustees makes a decision, families will be notified of the new school that their students will attend. Twin Rivers will support students in transition. More detailed information will be available once the Board has voted on the recommendations.

How will you accommodate more students?

We have many underutilized sites. If schools close, there are portable buildings that will be moved to accommodate more students. The District's School Site Capacity Study, along with an updated Facilities Master Plan, will be used to determine the number of students a school can accommodate. See the Student Housing Committee website for projections for new schools.

How will school closures affect funding for extracurricular and other programs?

School closures will not impact extracurricular and other programs in a negative way. It is possible that the savings from school closures will enhance or protect the existing budget utilized for programs and activities that enhance the educational programs for students. Twin Rivers currently provides competitive programs to attract and retain students including, but not limited to, Dual Immersion, integrated arts, Dual Enrollment (earning college credit while in high school), 23 career technical education pathways and advanced placement opportunities. The district will continue to provide these programs.

What will happen with class sizes?

Class sizes are determined by the collective bargaining agreement. The teacher's collective bargaining agreement contains class size language that must be complied with. Any changes to this class size language is required to be negotiated with the teacher's association.

What is the long-term plan for building new schools?

See the Student Housing Committee website for projections for new schools.



Next Step

Twin Rivers Unified School District: *Inspiring each student to extraordinary achievement every day!*

