



Berkeley Unified School District

## West Campus Parking Lot

February 5, 2020

Brent Stephens Ed.D - Superintendent

John Calise - Executive Director, Facilities Division

## West Campus Parking Lot Changes in Use and Design

Oxford Elementary School will be relocated to West Campus at the start of the 2020-2021 school year. However,

- The current parking lot is an open design that promotes public parking
- There are no systems of controls in place - The fire lane is blocked daily
- The parking lot is often beyond capacity

### **BUSD Staff Usage**

- 102 Staff Members Located in the District Office
- 2 Staff Members Located in the VAPA Office
- 58 Inbound Staff Members with the Oxford Elementary Move

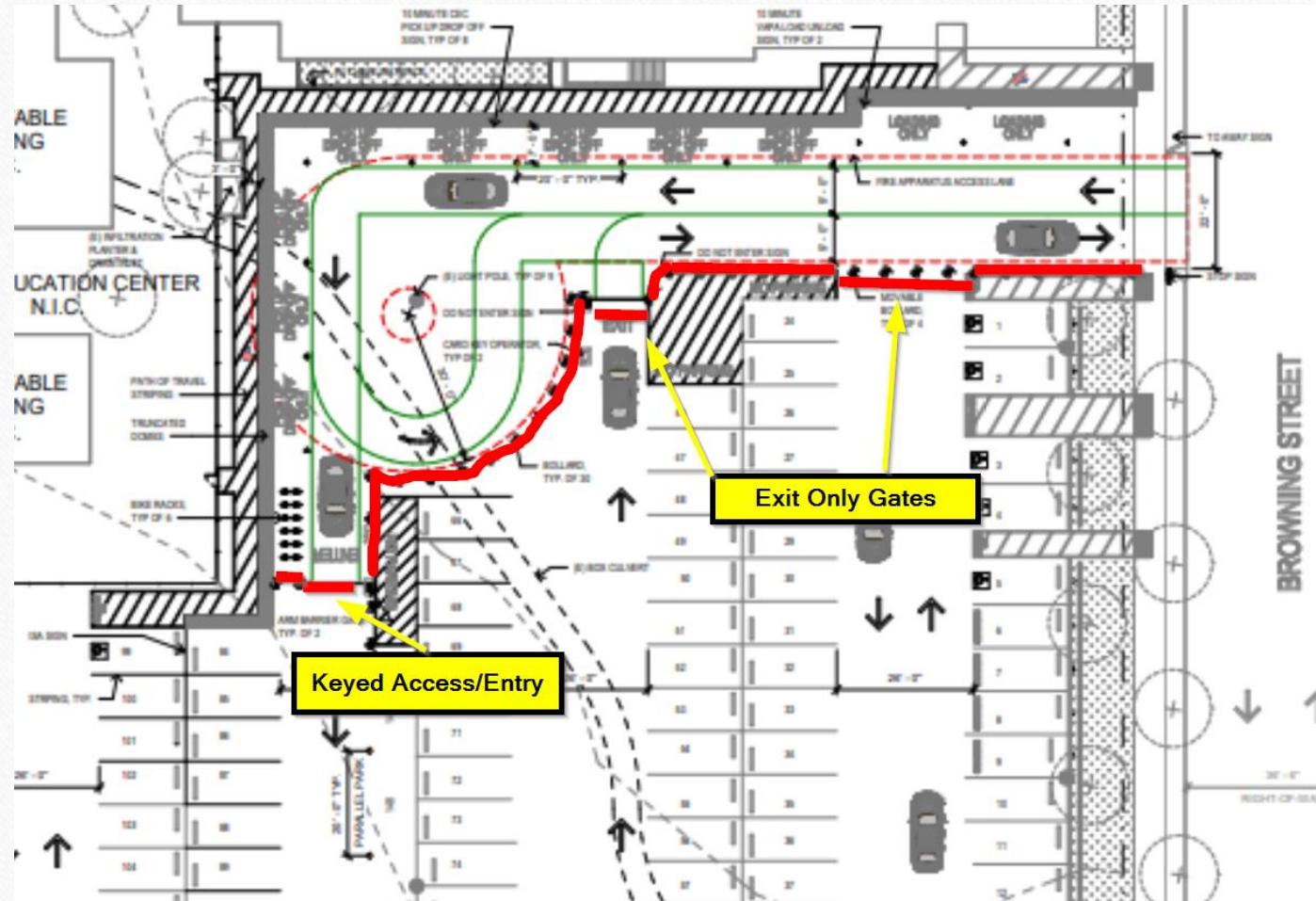
162 Staff Members in Total. This Does Not Include Itinerant Personnel and Staff/Community Members Attending Meetings at the District Office



## West Campus Parking Lot Initial Design Proposal – January 15, 2020

- Total Parking Spaces 149
- Total Pick Up/Drop off Spaces 8
- Total Loading Spaces 2
- Total Accessible Spaces 5

Pick up and Drop off spaces incorporated to accommodate the Child Education Center.  
Data provided by the CEC shows a maximum of 13 families in any 15 minute window.



**West Campus  
Community Meeting and Feedback,  
January 15, 2020**

- Community concern regarding public parking for pool users
- Community concern regarding public accessible parking for pool users
- Community neighborhood parking
- Parking for Child Education Center Staff Members
- Public parking nights, weekends and holidays
- Community concern that a new tall obtrusive fence was being proposed

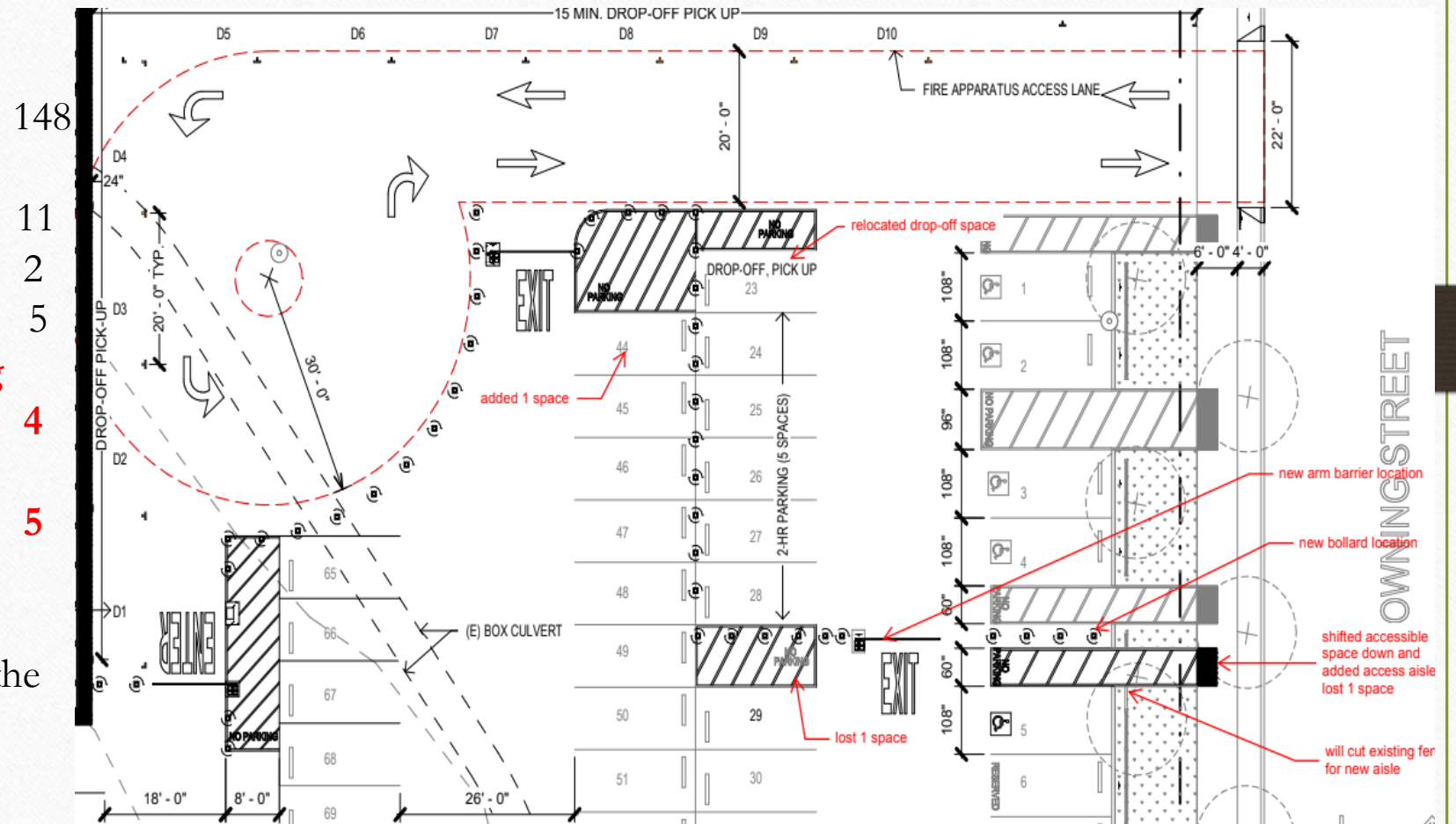
No new fencing – The parking lot controls will be bollards



## West Campus Parking Lot Changes in Design, January 22, 2020

- Total Parking Spaces
- Total Pick Up/Drop off Spaces
- Total Loading Spaces
- Total Accessible Spaces
- **Public Accessible Parking Spaces**
- **Public Standard Parking Spaces**

Pick up and Drop off spaces incorporated to accommodate the Child Education Center.



**West Campus**  
**Summary of Revised Design,**  
**January 22, 2020**

- 4 Accessible public parking spaces provided
- 5 Standard public parking spaces provided
- 11 Pick Up/Drop Off Spaces (15 minute) Maintained from Original Design
- 2 Loading Zones (VAPA) Maintained from Original Design
- Parking Lot Unlocked 6pm to 7am M-F, All Day Weekends and Holidays
- 5 Spaces Allocated to Staff at the Child Education Center
- 134 Staff Parking Spaces Available



**West Campus**  
**Additional Revisions**  
**February 5, 2020**

- 11 Pick Up/Drop Off Spaces (15 minute) will also be signed to accommodate two-hour parking during the work/school day. This will increase the number of public two-hour spots from four to fifteen.
- Parking lot gates will be raised at 3:00 pm on evenings when City of Berkeley Council or Commission meetings are taking place.
- BUSD Staff will explore with the City of Berkeley how to maximize parking accommodations for seniors and people with disabilities.