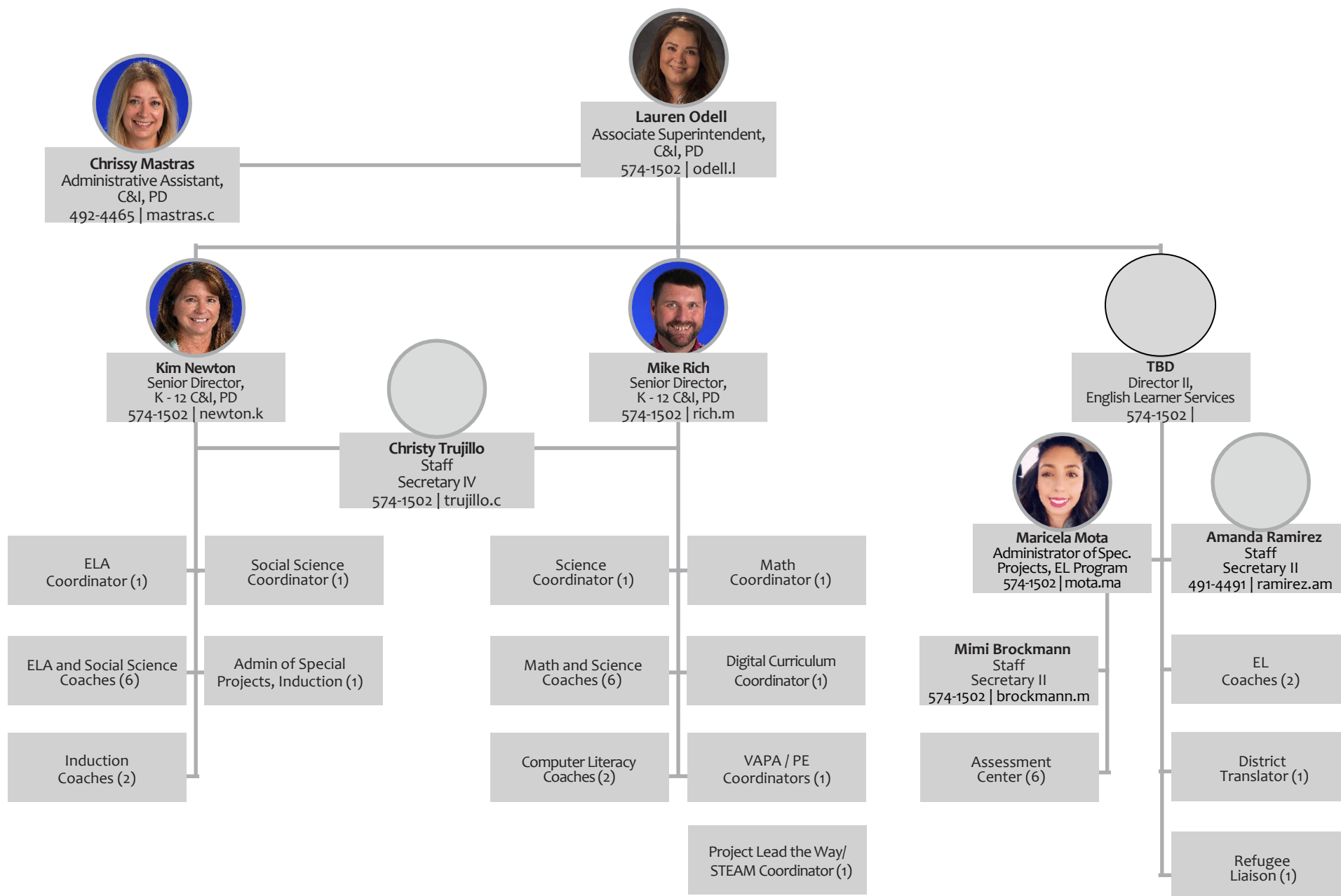




MODESTO CITY SCHOOLS | Curriculum & Instruction, Professional Development



2019/20 PROPOSED REORGANIZATION - C&I/PD
Revised - January 2020

All New positions at 195 Days

[illegible]

Curriculum & Instruction, Professional Development

2019-2020 Administrator Responsibilities

Lauren Odell, Associate Superintendent

574-1502

Senior Director, CIPD Kim Newton 574-1502	Senior Director, CIPD Mike Rich 574-1502	EL Director II TBD 574-1590	Administrator of Special Projects, EL Maricela Mota 574-1590	Administrator of Special Projects, Induction (1) TBD
<ul style="list-style-type: none"> English Language Arts Social Science Instructional Coaches/District Improvement Facilitator/BTSA Leadership PD Professional Development Curriculum Adoptions Course Outlines Kinder Fundamentals Report Cards Passport to Literature TK-6 ELA Assessment Committee GATE Foreign Language AVID Prep Providers Modesto Symphony 	<ul style="list-style-type: none"> Math TK-12 Science TK-12 Music TK-12 Computer Literacy TK-6 (CLT) Health Physical Education Visual and Performing Arts (VAPA) Instructional Coaches/District Improvement Facilitator Leadership PD Professional Development Curriculum Adoptions Course Outlines Librarians, LA II, and Library Services Math Cradle to Career Liaison Advanced Placement Training 	<ul style="list-style-type: none"> EL Curriculum TK-12 English Language Development TK-12(ELD) Academic Language Development TK-12 (ALD) EL Newcomer Program Language Institute (LI) Dual Language Academy (DLA) English Language Parent Partnership (ELPP-ELAC) District English Language Parent Committee (DELAC) EL Professional Development RSI/CALNEW Grant Title III LEP/Title III Immigrant District Translator Migrant Ed District BLDS Coaches 	<ul style="list-style-type: none"> English Language Proficiency Assessment of California (ELPAC) Testing English Learner Data Reclassification and 4-Year RFEP Monitoring DLA intake screening Migrant Ed data verification EL CALPADs Data Corrections 	<ul style="list-style-type: none"> Manage BTSA budget Recruit, interview, hire mentors Evaluate mentor performance PD during work hours PD after work hours Support staff, admin, potential teachers Compliance for LEA Data, reports Coordinate with admin certification programs Walk with site administration and provide coaching for them

Collaboration				
Kim	Mike	Lisa	Mota	TBD
<ul style="list-style-type: none"> Foreign Language Prep Teachers 	<ul style="list-style-type: none"> Librarians Physical Education Teachers VAPA Teachers Computer Literacy Teachers Health Teachers Music K-8 	<ul style="list-style-type: none"> Dual Language Academy(K-12) Long-term English Learners(LTEs) New to English Learners State Seal of Biliteracy (SSB) 	<ul style="list-style-type: none"> Assessments(district paraprofessional new hire screen, EL SSTs, etc.) 	<ul style="list-style-type: none">

ELA Coordinator Teacher (1)	H/SS Coordinator Teacher (1)	Sci Coordinator Teacher (1)	Math Coordinator Teacher (1)	VAPA/PE Coordinator Teacher (1)
<ul style="list-style-type: none"> lead collab facilitate all aspects of adoptions/ pilots PD during work hours PD after work hours community mtgs support in compliance support in BPs ARs support in a-g support in course alignment passport to lit Williams- ELA work directly with coaches lead and participate in coach PD 	<ul style="list-style-type: none"> lead collab facilitate all aspects of adoptions/ pilots PD during work hours PD after work hours community mtgs support in compliance support in BPs ARs support in a-g support in course alignment Williams H/SS work directly with coaches lead and participate in coach PD 	<ul style="list-style-type: none"> lead collab facilitate all aspects of adoptions/ pilots PD during work hours PD after work hours community mtgs support in compliance support in BPs ARs support in a-g support in course alignment Williams Sci work directly with coaches lead and participate in coach PD 	<ul style="list-style-type: none"> lead collab facilitate all aspects of adoptions/ pilots PD during work hours PD after work hours community mtgs support in compliance support in BPs ARs support in a-g support in course alignment Williams Math work directly with coaches lead and participate in coach PD 	<ul style="list-style-type: none"> lead collab facilitate all aspects of adoptions/ pilots PD during work hours PD after work hours community mtgs support in compliance support in BPs ARs support in a-g support in course alignment work directly with coaches lead and participate in coach PD

BTSA Coach Teacher (2)	ELA Coach Teacher (4)	H/SS Coach Teacher (2)	Science Coach Teacher (2)	Math Coach Teacher (4)
<ul style="list-style-type: none"> • Interns • Prob 1 • Prob 2 • classroom management • lesson planning • PD for staff, admin, potential teachers • BTSA mtg • JEPD • data • reports • attend district mtgs 	<ul style="list-style-type: none"> • lesson planning • PD for staff, admin, potential teachers • JEPD • data • reports • attend district mtgs • PD during work hours • PD after work hours • flexible hours 	<ul style="list-style-type: none"> • lesson planning • PD for staff, admin, potential teachers • JEPD • data • reports • attend district mtgs • flexible hours 	<ul style="list-style-type: none"> • lesson planning • PD for staff, admin, potential teachers • JEPD • data • reports • attend district mtgs • flexible hours 	<ul style="list-style-type: none"> • lesson planning • PD for staff, admin, potential teachers • JEPD • data • reports • attend district mtgs • flexible hours

Project Lead the Way/STEM Coach Teacher (1)	Computer Literacy Coach Teacher (2)	Digital Curriculum Coordinator Teachers (1)	EL Coach Teacher (2)
<ul style="list-style-type: none"> • Lead implementation of PLTW for 9 sites • Coach teachers • Monitor program • Data • Reports • PD for teachers, admin, paras • Maintain licenses 	<ul style="list-style-type: none"> • PD for staff, admin, data • reports • attend district mtgs • CLT teachers • flexible hours • create and model lesson plans for all CLT teachers • create, grade, monitor CLT district assessments • Support PLTW • Support co-curricular groups such as coding • facilitate CLT specialty groups 	<ul style="list-style-type: none"> • maintain curricular platforms • PD for staff, admin, data • reports • attend district mtgs • flexible hours • maintain PD portal • Support co-curricular groups such as coding 	<ul style="list-style-type: none"> • lesson planning • PD for staff, admin, potential teachers • JEPD • data • reports • attend district mtgs • DELAC • ELPP • compliance • supports to admin • course alignment • flexible hours

