




# **Impacts of the Merger of Cook Middle School and Cesar Chavez Language Academy**



Update  
February 12, 2020  
Discussion/Action



# Considerations for the Option #1: Charter K-8

---

Special Education Services

Staffing

Legal language to address neighborhood students in charter document

Other school impacts to due boundary changes

Financial impacts

Gateway middle school strands

# 1. Options for Cook/CCLA

---

- Combine the two schools under a K-8 charter which would necessitate the Board of Education to close Lawrence Cook Middle School.
- Material revision to charter to address priority for neighborhood students and existing Lawrence Cook Middle School Programs.

# Special Education Services

- Special Education Classrooms:
  - Maintain current school's Mild/Moderate Support Needs
  - Maintain Special Day Class serving students with Extensive Support Needs
- Special Education Transportation 7th and 8th grade
  - Currently there are 21 students receiving transportation at Cook and none for CCLA.
  - No Changes or additional Special Education transportation costs.

# Staffing Needs and Considerations: Current Reality

## Current Staffing Model

- 2 full elementary and middle school classified and certificated staff
- CCLA staff are elementary credentialed for work in a self-contained classroom
- Cook staff are secondary, single subject credentialed teachers

## Current Staffing Considerations

- CCLA staff hold a bilingual (BCLAD) authorization
- Cook staff are not required to hold a BCLAD authorization
- Cook does not currently offer Spanish
- Staff are not shared across the two schools/programs

# Staffing Needs and Considerations: Option 1

## Potential Staffing Model

- CCLA: 1 additional Spanish FTE
- Cook: Need the following
  - 1 BCLAD ELA/Social Studies teacher
  - 1 BCLAD Math/Science teacher
  - PE teacher
  - Elective
- Reduce to one principal, one co-admin
  - VP instead of AP
  - CSEA 75 office reductions/re-assignments
  - CSEA 75 classroom instruction aides remain

## Potential Staffing Considerations

- 32 incoming 7th graders
- 7/8th grade students in World Language
- English Only will not take World Language
- Single subject teachers cannot teach in a self contained elementary classroom,
- Difficulty in finding BCLAD “2-content” teachers
- Additional stipend for BCLAD authorization (\*Negotiated item)

# Charter Language: Material Revision

---

## Element H Addition:

“...applicants for admission to 7<sup>th</sup> and 8<sup>th</sup> Grade residing at the time of application within the attendance area of Lawrence Cook Middle School, as that attendance area stood during the 2019-2020 school year, shall be admitted before all other applicants...”

\*Full language in attachments

# Attendance Boundaries

---

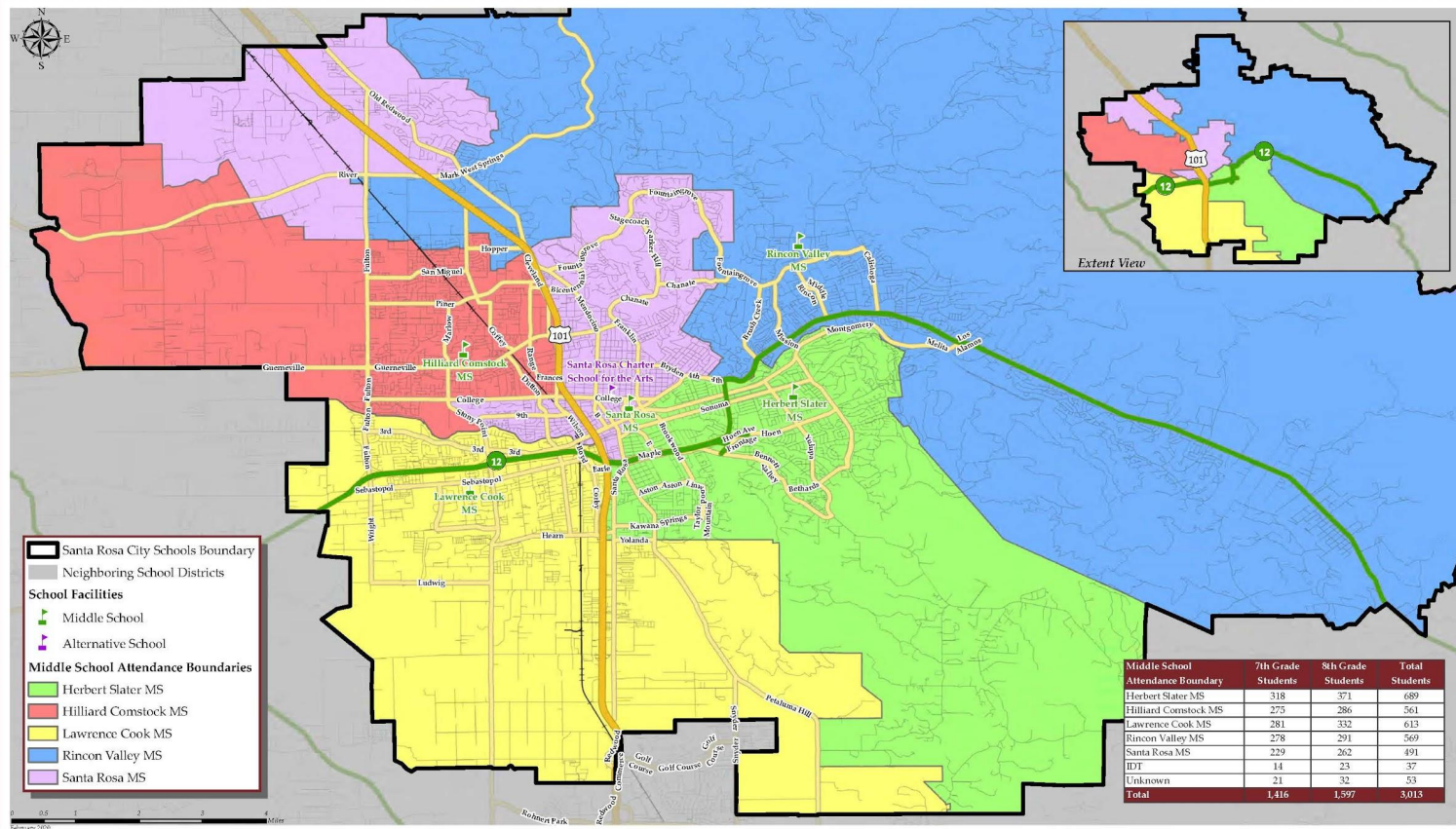
- All students are entitled to have a neighborhood school attendance boundary
- Charter Schools do not have attendance boundaries for neighborhood students.
- Potential closure of Lawrence Cook Middle School will necessitate the need to redraw middle school attendance boundaries
- Redrawn boundaries will impact enrollment at Middle and High Schools



# Current Cook Middle School Boundary

## SANTA ROSA CITY SCHOOLS

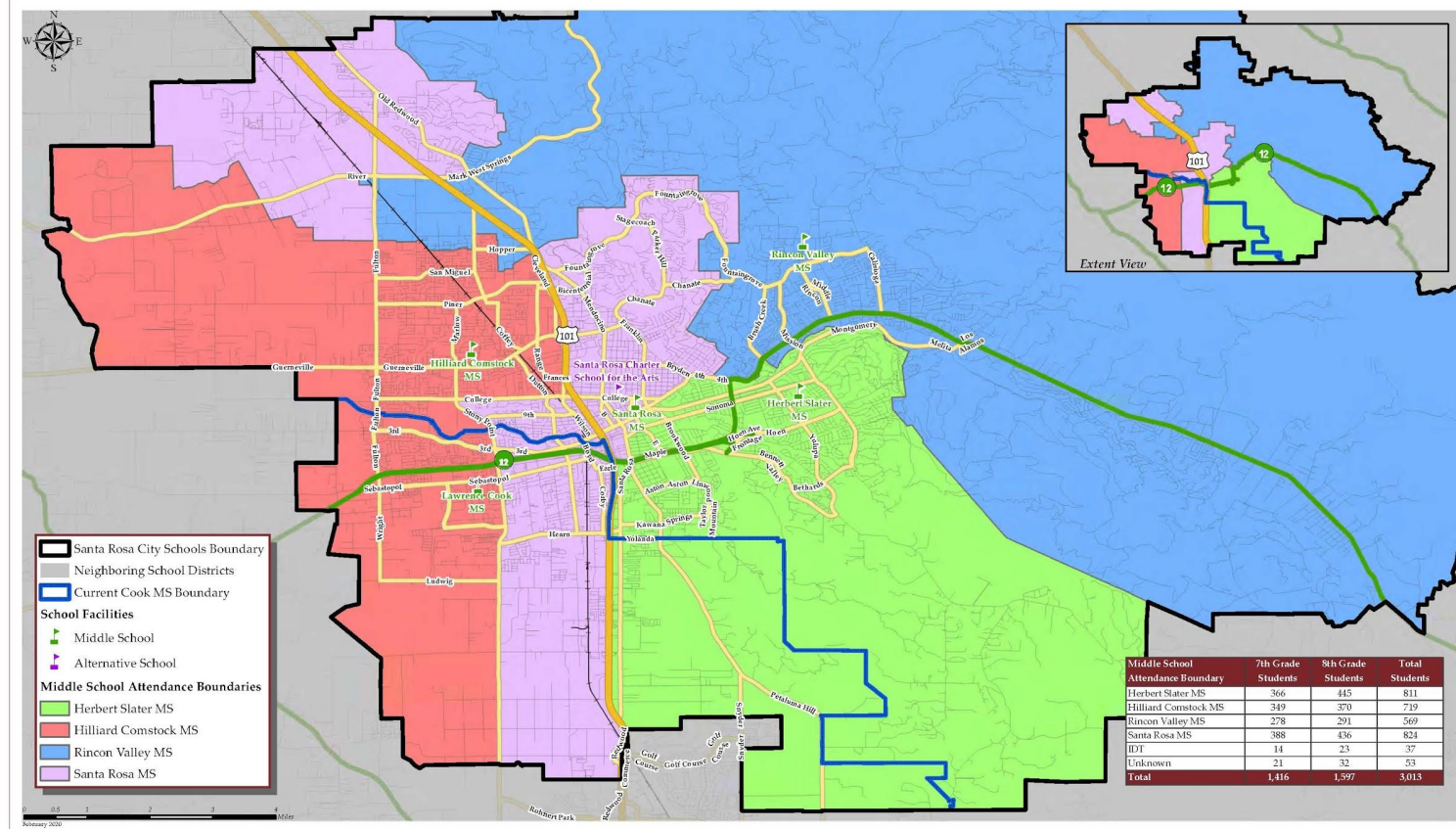
## CURRENT MIDDLE SCHOOL ATTENDANCE BOUNDARIES



# Option 1 - New Middle School Boundaries

## SANTA ROSA CITY SCHOOLS

## PROPOSED MS ATTENDANCE BOUNDARIES - SCENARIO 1



# Financial Impact - Option #1: Charter K-8

<b>2020-21 K-8 CCLA Charter School - Option #1</b>					
	Enrollment	Average Daily Attendance	ADA for Funding	Base Grants	Allocation
Grades TK-3	287	96%	275.52	\$8,697.00	\$2,396,197.44
Grades 4-6	138	96%	132.48	\$7,997.00	\$1,059,442.56
Grades 7-8	337	96%	323.52	\$8,234.00	\$2,663,863.68
<b>Grade Span Adjustment</b>					
Grades TK-3	287	96%	275.52	\$819.00	\$225,650.88
<b>Supplemental Grant</b>					
Projected Unduplicated Pupil Count			534.9293	\$1,661.87	\$888,981.25
<b>Total LCFF Funding</b>					<b>\$7,234,135.81</b>

# Middle School Academic Program

World Language	Dual Immersion	Newcomer	Traditional
Spanish I, II, Native Speakers, Academic Language Development	Spanish Language Arts	ALD	Elective
English Language Arts	English Language Arts	English Language Arts (ESL)	English Language Arts
Social Studies	Social Studies (in Spanish)	Social Studies (in Spanish)	Social Studies
Science	Science*	Science *	Science
Math	Math	Math	Math
PE	PE	PE	PE
Elective	Elective	Elective	Elective

# Potential Electives

---

- AVID
- Leadership
- Spanish for Spanish Speakers\*
- Spanish 1\*
- Arts & Crafts
- Band
- Peer Tutor
- Drama
- Yearbook

\*Part of World Language Strand

## 2. Options for Cook/CCLA

---

- The incoming 7th grade students at CCLA is projected\* at 32 students (16 students in two sixth grade classes currently).
  - *\*Projected number is the current number of 6th grade CCLA students that are reasonably expected to continue enrollment in CCLA 7th grade.*
- Keep the two schools as is (K-8 for CCLA and 7-8 for Cook) to cohabitate and utilize the facilities, create learning opportunities within the two schools, keep the funding sources separate, and maintain a neighborhood school.

# Considerations for the Option #2: Co-Located Schools

---

Special Education Services

Staffing

Financial impacts

Gateway middle school strands



# Special Education Services

## ● Special Education Classrooms:

- Maintain current school's Mild/Moderate Support Needs
- Maintain Special Day Class serving students with Extensive Support Needs

## ● Special Education Transportation 7th and 8th grade

- Currently there are 21 students receiving transportation at Cook and none for CCLA.
- No Changes or additional Special Education transportation costs.



# Option 2: Staffing Needs and Considerations

## Potential Staffing Considerations

- Reduce to one principal, one AP
  - VP instead
  - CSEA 75 office reductions/re-assignments
    - CSEA 75 classroom instruction aides remain the same
- 32 incoming 7th graders
- All 7 and 8th grade students in World Language strand take Spanish
- Students enrolled in English Only will not take a World Language elective
- Difficulty in finding BCLAD “2 content” teachers
- Additional stipend for BCLAD authorization (\*negotiated items)

# Attendance Boundaries

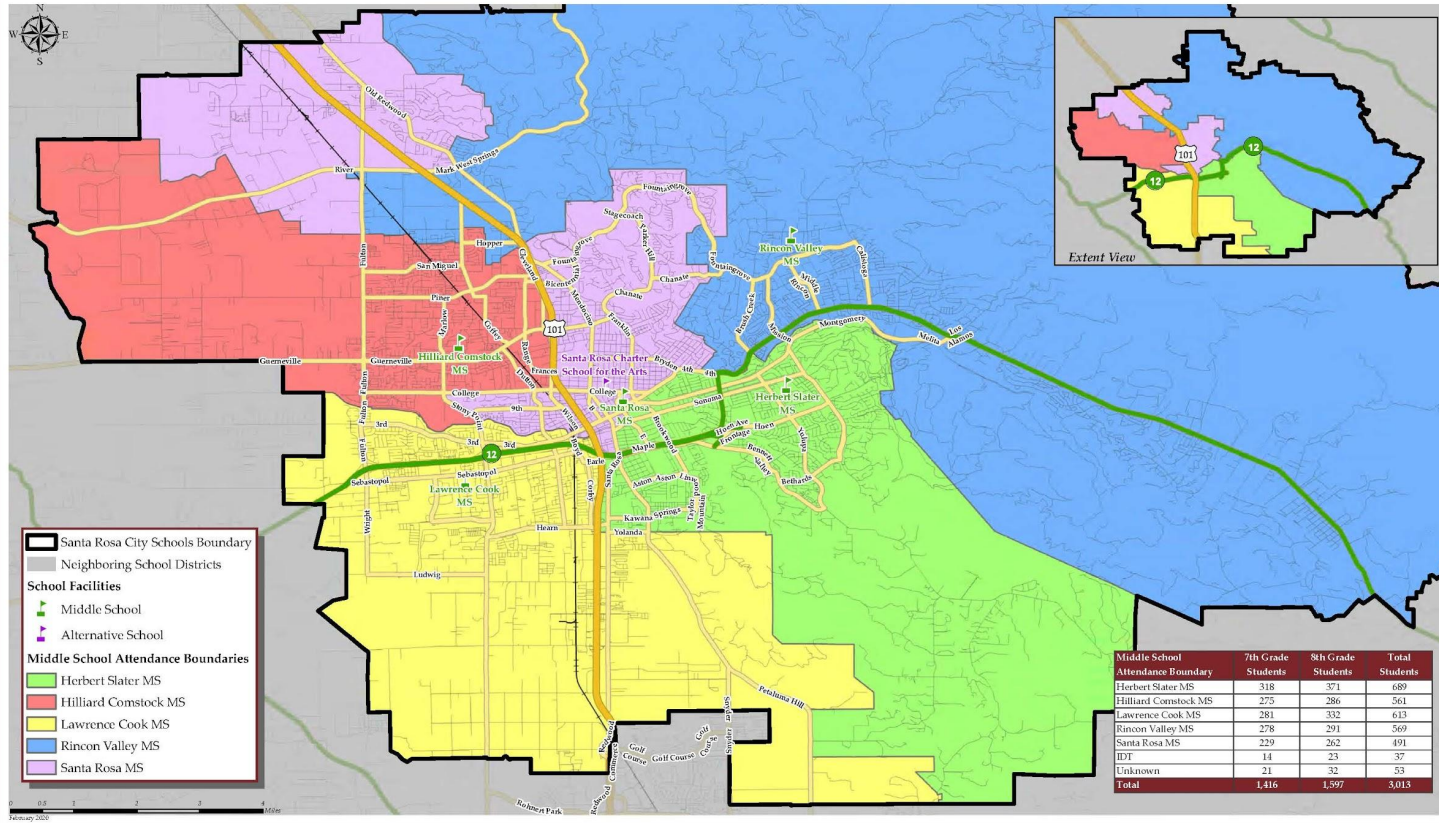
---

- The attendance boundary for the neighborhood middle school students unchanged
- Charter Schools do not have attendance boundaries for neighborhood students.
- Limits impact to other middle and high schools
- Provides a feeder middle school to Elsie Allen High

# Option 2 - Middle School Boundaries

## SANTA ROSA CITY SCHOOLS

## CURRENT MIDDLE SCHOOL ATTENDANCE BOUNDARIES



# Financial Impact - Option #2: Co-Located

2020-21 CCLA/Cook - Option #2 Co-Location					
CCLA K-7					
	Enrollment	Average Daily Attendance	ADA for Funding	Base Grants	Allocation
Grades TK-3	287	96%	275.52	\$8,697.00	\$2,396,197.44
Grades 4-6	138	96%	132.48	\$7,997.00	\$1,059,442.56
Grades 7-8	32	96%	30.72	\$8,234.00	\$252,948.48
Grade Span Adjustment					
Grades TK-3	287	96%	275.52	\$819.00	\$225,650.88
Supplemental Grant					
Projected Unduplicated Pupil Count			320.3967	\$1,661.87	\$532,456.66
Charter LCFF Funding					\$4,466,696.02
Neighborhood Middle School Funding					
	Enrollment	Average Daily Attendance	ADA for Funding	Base Grants	Allocation
Grades 7-8	425	94%	399.5	\$8,234.00	\$3,289,483.00
Projected Unduplicated Pupil Count			351	\$1,646.80	\$577,904.77
Neighborhood School LCFF Funding					\$3,867,387.77
Total Co-Location Funding					\$8,334,083.79

# Financial Information

---

<b>2020-21 Option #1: Charter K-8</b>	
<b>Total LCFF Funding</b>	<b>\$7,234,135.81</b>
<b>2020-21 Option #2 Co-Located</b>	
<b>Total Co-Location Funding</b>	<b>\$8,334,083.79</b>

# Middle School Academic Program

World Language	Dual Immersion	Newcomer	Traditional
Spanish I, II, Native Speakers, Academic Language Development	Spanish Language Arts	ALD	Elective
English Language Arts	English Language Arts	English Language Arts (ESL)	English Language Arts
Social Studies	Social Studies (in Spanish)	Social Studies (in Spanish)	Social Studies
Science	Science*	Science *	Science
Math	Math	Math	Math
PE	PE	PE	PE
Elective	Elective	Elective	Elective

# Potential Electives

---

- AVID
- Leadership
- Spanish for Spanish Speakers\*
- Spanish 1\*
- Arts & Crafts
- Band
- Peer Tutor
- Drama
- Yearbook

\*Part of World Language Strand

# Board discussion and direction

---

Boundaries

Impact to other school sites

Staffing

Financials

Other