

ED

Presented to

Marla Rodriguez, Ac
Arcia Dorosti, Dir
Tim Landeck, Director of T
Misty Hartung

by

Tim Landeck, Director of Technology, Assessment and Accountability
Misty Hartung, Director of Student Services

01 District Access

Enrollment Processes

02 Remote Learning

Phase I, II, III

03 Professional Development

Sessions
Help-Desk
Office Hours

04 Technology Updates

Devices
Hotspots

05 Student Services

Special Education
Student Services
Parent Supports

06 Staff Support

Staff Self-Care



1

Beginning on Monday, March 30, the District launched electronic enrollment processes.

electronickenroll@lgusd.org

9 Families; 11 new students in the first 10 days



District Access

2

Remote Learning



Constancy of care. Perhaps that's all we can hope to find that doesn't change. But what a lot that is! --Fred Rogers

RESPONSIVE



Information updates and changes have come at an unprecedented pace. We have approached changes with every effort to be intentionally responsive rather than reactive.

COLLABORATION



The ENTIRE District has worked together and supported each other. Out of this indescribable experience, that collaboration has made us stronger.

Remote Learning Guiding Principles



Phase 1

Remote Learning
Website



Phase 3

Enhanced Content
with Care



Phase 2

Connection over
Content



Parent Tools/Support

Ideas, tips, and strategies to support
at-home learning routines.

Launching Remote Learning

Remote Learning Platforms and Tools



SREENCASTIFY



GOOGLE
CLASSROOM
3-8



SEESAW
TK-2



ZOOM

ZOOM PRIVACY PROTECTIONS

Teachers are making their Zoom class meetings more secure by adjusting specific settings in their Zoom meetings. A few are:

- Enable a "Waiting Room" for all participants so teachers will admit only people that are meant to be in the meeting
- Require a password to join class zoom meetings
- Disable screen sharing by participants unless authorized by the teacher



3

Professional Development

Invest in your professional development. Specialize....and team up with colleagues who have different strengths.

--Melissa Milloway

IT Resources Website



- Intranet
- PD Sessions
- Remote Learning Resources

PD SESSIONS



- Mostly Teacher-Lead
- Recorded for asynchronous viewing
- Averaging 5 per week

OFFICE HOURS



- K-8
- Twice a Week

HELP DESK

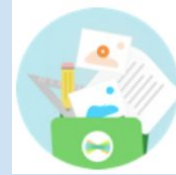


- Remote technical support
- Chromebook Loaners
- Teacher Laptops

SeeSaw Primary Platform



Parent Visits
380



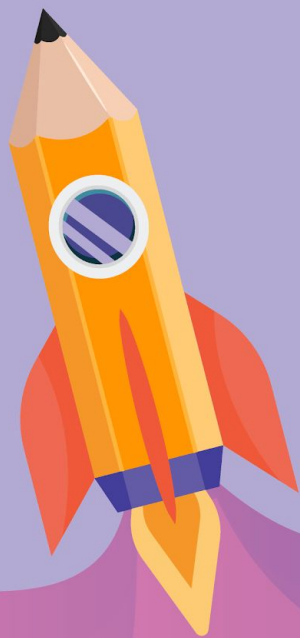
New Items
3,502



Likes
1,495



Comments
1,727



4

Technology Updates

We need technology in every classroom and in every student and teacher's hand, because it is the pen and paper of our time, and it is the lens through which we experience much of our world. --David Warlick



Chromebooks
180



HotSpots
10



OTHER WI-FI
Fisher and Lexington
parking lots



Additional Support

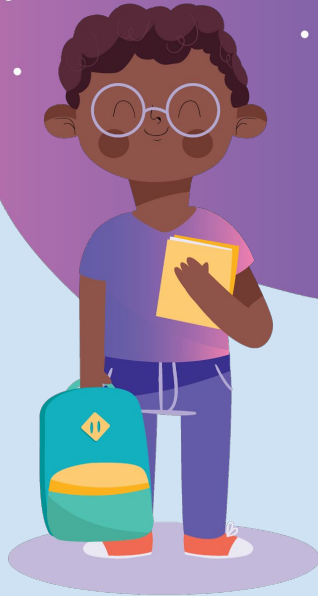
- Musical Instruments
- Assistive Technology

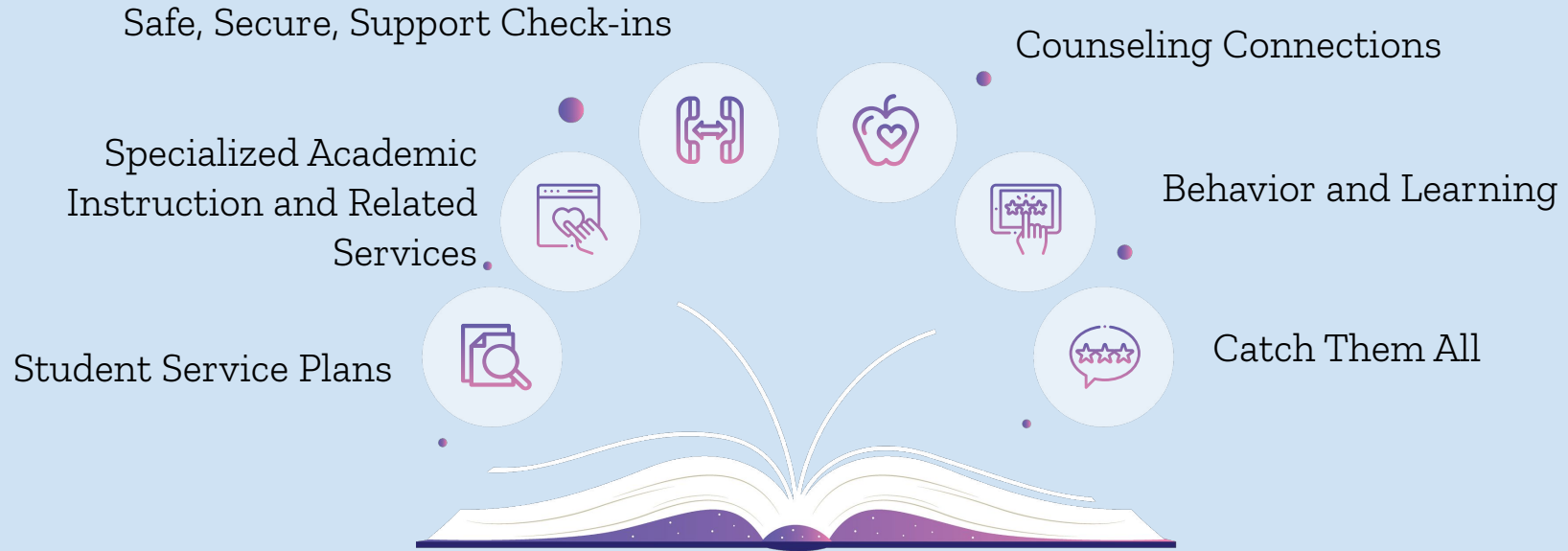
Three Distributions to Families



Student Services

One looks back with appreciation to the brilliant teachers, but with gratitude to those who touched our human feelings. --Carl Jung





Student Services

A Moment About Grading

Stress and anxiety impact cognition, particularly with higher-demand tasks involved in learning.

Performance will assuredly be compromised and will not accurately reflect true learning capability or capacity.

Research, and our normal professional practice, emphasizes the impact of feedback to focus students on **learning** rather than performance.

When the psychological and intellectual "load" on students and their families is so significant, it is important that schools lean on the side of **support and learning** rather than letter grades/percentages and high-stakes performance.



Our shared overarching goals are

- to keep students engaged,
- focus on the essential skills that will allow them to be successful in their next year, and
- to maintain social connections with other students and teachers to provide stability and decrease social isolation during the school closures.

(The middle school will make grading protocol adjustments in concert with the high school for the four courses that are high school credit specific.)



6

Staff Support

In dealing with those who are undergoing great suffering, if you feel "burnout" setting in, if you feel demoralized and exhausted, it is best, for the sake of everyone, to withdraw and restore yourself. The point is to have a long-term perspective. --Dalai Lama



Self-Care

THANK YOU

- Presentation template by Slidesgo
- Icons by Flaticon
- Infographics by Freepik
- Images created by Freepik
- Author introduction slide photo created by Freepik
- Text & Image slide photo created by Freepik.com