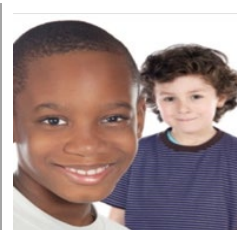
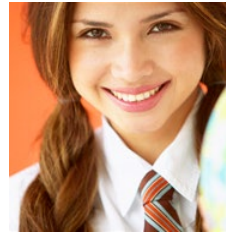


Report on Distance Online Learning Model



Presented by:
Superintendent's Cabinet
July 27, 2020



Every Student Matters, Every Moment Counts

Purpose

The purpose of this presentation is to provide a report on the MCS Distance Learning model.

The report will include:

- Details of the MCS-MTA Letter of Agreement regarding the Distance Learning instructional model.
- Supports provided to staff via CIPD
- Regulations on English Learners



Every Student Matters, Every Moment Counts

District Goal Alignment

Goal One: Increase academic achievement and ensure equitable access to enable all students to attain college and career readiness.

Goal Two: Ensure all employees have access to high quality professional development.

Goal Three: Provide a safe, welcoming, and respectful learning environment for every member of the school community while ensuring effective district-wide communication for students, staff, families, and community partners.

Every Student Matters, Every Moment Counts

Distance Learning LOA

- **Teachers work at the Site**
 - Exceptions:
 - Medical conditions must go through the **interactive process**
 - Certificated staff w/ **children birth-12 years** old have option of working from home
 - **Accountability** for the work expectations
 - **Materials** and **internet** are the responsibility of the employee

Distance Learning LOA

- **TK-6 Distance Learning Parameters**
 - All TK-6 sites on the **same daily schedule**
 - Morning meetings daily 5-15 minutes
 - **Direct Instruction (DI)** minimums established:
 - **TK-K 90 minutes**
 - **1-3 115 minutes**
 - **4-6 120 minutes**

Distance Learning LOA

TK-6 Daily Instructional Schedule

	Monday	Tuesday	Wednesday	Thursday	Friday
8:30-8:45 am	Morning mtg.	Morning mtg.	Morning mtg.	Morning mtg.	Morning mtg.
8:45-9:45 am	ELA	ELA	Teacher conduct virtual small groups Teachers provide feedback for digital learning	ELA	ELA
9:45-10:15 am	Digital Break	Digital Break		Digital Break	Digital Break
10:15-11:30 am	Math	Math		Math	Math
11:30 am -12:30 pm	Lunch	Lunch		Lunch	Lunch
12:30-1:00 pm	Language and Writing	Language and Writing		Language and Writing	Language and Writing
1:00 pm – 2:30 pm	Individual work, PE, digital break, enrichment, music, teacher check-in meetings	Individual work, PE, digital break, enrichment, music, teacher check-in meetings	Teacher Collab (1 hr)	Individual work, PE, digital break, enrichment, music, teacher check-in meetings	Individual work, PE, digital break, enrichment, music, teacher check-in meetings
2:30 - 3:00 pm	Teacher Prep	Teacher Prep		Teacher Prep	Teacher Prep

Every Student Matters, Every Moment Counts

Distance Learning LOA

- **TK-12 Nutrition Services Meals**
 - Curbside meal pickup locations (**20 sites**)
 - All curbside **meal locations open** for pick-up between **10:35 am – 12:30 pm**.
 - Students enrolled at Modesto City Schools, regardless of the school they are enrolled at, **can pick-up meals at ANY of the locations**.

Distance Learning LOA

- **TK-12 Nutrition Services Meals**
 - **Barcoded ID cards** unique to each student will be used to get meals
 - **Different than summer** feeding process
 - Nutrition Services staff will be using **cafeterias / multipurpose rooms** for meal preparation daily from 6:00 am – 3:00 pm.

Distance Learning LOA

- **TK-12 Nutrition Services Meal Distribution Sites**
 - Starting August 10, 2020, curbside meal pickup locations will be at:

- Beyer
- Bret Harte
- Burbank
- Davis
- Downey
- **Fairview**
- **Garrison**
- Gregori
- Johansen

- La Loma
- Mark Twain
- Marshall
- **Martone**
- Modesto
- **Rob Road**
- Roosevelt
- Shackelford
- **Sonoma**
- Tuolumne
- Wright

***We will continue to serve at George Rogers Park adjacent to Wright while the Modesto road improvement project is underway. We will continue to work with Roger to monitor the progress of the road improvement and will move back to Wright as soon as safely possible.*

Every Student Matters, Every Moment Counts

Distance Learning LOA

- **TK-6 Distance Learning Parameters**
 - TK-6 schedule still **includes support outside DI** schedule
 - DI may be **live or recorded** (screencast)
- **Teachers** must establish **“Office Hours”** for **parent** questions and assistance
 - Must be a set day of the week & time

Distance Learning LOA

- **TK-6 Distance Learning Parameters**
 - **Wednesdays schedule nuances:**
 - **Conduct small and individual group**
 - **Assessments**
 - **Provide other forms of feedback**
 - **Attend IEP Meetings**
 - **Collaboration time**

Distance Learning LOA

- **TK-6 Distance Learning Parameters**

- Other

- **ELD** during “Language & Writing” instructional segment
 - Schools may swap **ELA** and **Math** blocks as determined by the Principal and Leadership Team
 - **1:00pm - 2:30pm Block:**
 - Conduct individual meetings, assign and facilitate independent work, enrichment, PE, etc...

Distance Learning LOA

- **7-12 Distance Learning Parameters**
 - Classes **80 minutes** in length
 - Min. of **30 minutes direct instruction**
 - Support provided during the additional class period
ie...individual and/or group
 - Set virtual office hours (1-hr / week)
 - Wednesdays
 - Small group, individual sessions
 - Collab based on calendar

Distance Learning LOA

7-12 Daily Instructional Schedule

	Monday	Tuesday	Wednesday	Thursday	Friday
7:50 - 9:10	0	8	Virtual Co/Extra-curricular advisory time	0	8
8:30 - 9:00	Office Hours for those w/out 0/8	Office Hours for those w/out 0/8	Office Hours	Office Hours for those w/out 0/8	Office Hours for those w/out 0/8
9:15 - 10:35	1	4/5	Rotating Homeroom Meeting (30 min)	1	4/5
Lunch			All Online: Teacher conduct virtual small groups Teachers provide feedback for digital learning		
11:45 - 1:05	2	6		2	6
1:10 - 2:30	3	7		3	7
			Collab (1 hr)		

Every Student Matters, Every Moment Counts

Distance Learning LOA

7-12 Wednesday Schedule: Homeroom & Subject Specific Support

WEDNESDAY - Rotating Homeroom group Schedule		WEDNESDAY - Time for group meetings by subject area	
August	Period 1	ELA	9:45 - 10:15
September	Period 2	Math	10:15 - 10:45
October	Period 3	Science	10:45 - 11:15
November	Period 4/5	Social Science	11:15 - 11:45
December	Period 6	World Language	11:45 - 12:15
January	Period 7	Electives	12:15 - 12:45

Every Student Matters, Every Moment Counts

Distance Learning LOA

- **Platform**
 - Focus on: **Schoology**, **MS Teams**, and **PowerSchool**
 - Alternative platforms may be approved as we move forward
- **Email Requirements**
 - Minimum of twice daily

Distance Learning LOA

- **Special Education**

- Teachers use the same schedule
- Itinerant specifics provided
- Unit members have the same requirements for collab/email communication/working from site vs home

- **Assessments**

- 1-1 Setting (assessment centers with proper PPE)

Distance Learning LOA

- **Distance Learning Plans**
 - **Updated** within the **first 45 days**
 - Added to the **IEP document**
 - Completed in **consultation** with the **parent**
 - **SPED** providers **complete log of contacts** and/or registers to **document time**

Distance Learning LOA

- **Specialty group highlights**
 - Counselors (Hotline 2 hours per week)
 - IC Teachers (Equity issues)
 - MTSS Coaches (Assist with Distance Learning & CIPD)
 - CLTs (Assist with Distance Learning)
 - Prep providers (social-emotional/character lessons and support)
 - *Instructional Coaches, Coordinators (slides coming w/ details)

Distance Learning LOA

- **Health and Safety**

- Regular cleaning (copy machines)
- PPE made available
- Social distancing
- Hand sanitizer in every classroom
- Health questionnaire
- Teachers may still meet with students families (admin approval)

Distance Learning LOA

- **Substitutes**

- Follow established call in procedures
- Lesson plan required
- Sharing of video conferencing links
- No sharing of passwords
- Substitutes will be provided:
 - Training
 - Computers
 - Report to the school site

Distance Learning LOA

- **Stipends**
 - Any and all stipends dependent on Principal approval (full or prorated)
- **Professional Development w/ CIPD**
 - To the extent possible, online
 - Rare case we can't do online - work through case-by-case

Distance Learning LOA

- **Evaluation**

- Permanent staff

- **Cannot begin prior** to September 21st

- **Modified** short form

- **Limited** to the following CSTPs:

- 2, 4, and 5

- CSTP 6 addressed only in the final evaluation summative



Distance Learning LOA

- **Evaluation (cont.)**

- Permanent staff

- **Formal observations must be scheduled**

- Access to all Schoology pages granted to site admin

- **Observation “musts”**

- Evidence of pre-planning

- Direct instruction (live or recorded)

- Observation of live engagement with students

Distance Learning LOA

- **Evaluation (cont.)**

- Probationary

- Same process outlined in the CBA
 - Ratification of T.A. will mean short form
 - May begin observations **after August 24th**



Distance Learning LOA

- **Evaluation Mindset**
 - Employee stress & anxiety
 - Site admin will approach this process with **empathy** and **support**



Scenario: Shelter in Place

- **Planning & communication is KEY:**
 - District will communicate districtwide
 - Sites will communicate to staff and students
 - Work from home
 - Do you have what you need?
 - Computer, curriculum, etc.
 - Communication protocols for sites
 - Forwarding phones-Admin & Classified staff
 - Customer service for community
- **GOAL: Seamless transition**

CIPD Supports

- TK-12 Distance Learning teacher supports
 - Coaching, Curriculum Pacing, templates, ed. tech recommendations
- Coaching Office Hours
- Content Newsletters
- Professional Development (not 0.5%)
- Swun

English Learners

- School Data & Teacher List
- Federal/State Expectations
 - ELPAC
 - RFEP & RFEP Monitoring
 - DELAC & ELAC
- ELD: Integrated & Designated (Senate Bill 98)
 - Provide instruction in English Language Development as required (see schedule – “Language and Writing” segment).
 - K-6 Wonders ELD
 - 7-8 StudySync
 - 9-12 Edge
- Translations & Interpretations

DELAC & ELAC

DELAC

- Virtual Meetings (*9:30 to 11:30*)
 - July 23, Aug 13, Sept 24, Nov 12, Jan 14, March 18, May 13

ELAC

- Virtual Meetings
- All Supports/slidedecks created for site use
- All MCS Schools

Equity & Access

- ELs
 - +400 students
 - 170 students
 - New ELs
- Refugee Students
 - Liaison, Janeth Gutierrez
 - +500 students

Every Student Matters, Every Moment Counts

The First 2 Weeks...

Launching Distance Learning



Schoolology

Templates & Resources

Routines & Procedures

Building Relationships

Diagnostic Assessments

Parent Communication



Every Student Matters, Every Moment Counts

The First 2 Weeks...

Launching Distance Learning

First Four Weeks

EdTech Video Resources

Week 1 - I DO

Week 2 - WE DO

Week 3 - YOU DO TOGETHER

Week 4 - You Do



Every Student Matters, Every Moment Counts

0.5% PD Initiative (tentative)



MODESTO CITY SCHOOLS

[Home](#) [Transcript](#) [PD Playlists](#) [Administration](#) [Support](#) [Courses I Am Teaching](#) [Propose A Course](#)

Focus:

- Diversity, Race & Social Justice
- Distance Learning
 - Technology
 - Pedagogy
 - Social/Emotional (PBIS, Trauma, SEL online...)

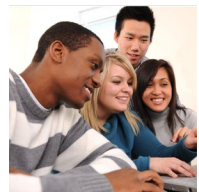
Types:

- Digital Library (self paced)
- Virtual/Online
- In Person (limited & only if absolutely necessary)

Every Student Matters, Every Moment Counts

Next Steps

- Continue outreach to families to support internet connectivity
- Device distributions
- Teacher support & training (Aug. 4-6)
- Monitoring/Supporting ELs, Refugees, & most vulnerable populations



Every Student Matters, Every Moment Counts

Feedback/Comments/Questions



Every Student Matters, Every Moment Counts