



Fall 2020 Educational Plan Update

September 10, 2020 Update

Agenda for Presentation

- Attendance Process Documentation
- Data from First Three Weeks of School
- Edgenuity Reports for Independent Study Students
- Offering the SAT & PSAT
- Outdoor Opportunities for Students
- Academic Reports from Teachers
- Technology Update
- Weekly Learning Schedule - to be discussed at October meeting
- Distance Learning going forward
- Latest Health Data
- Questions & Feedback



Attendance/Engagement Documentation Process

- Teachers are taking daily attendance
- Attendance is different in a distance learning environment as students are not marked “present” or “absent”
- Students will be either marked
 - *Distance Learning Engaged* (DLE)
 - Or
 - *Distance Learning Not Engaged* (DLN)
- Monitoring Attendance
 - Teacher contact, evening autocalls, messaging, and home visits

Engagement Data From Weeks 1-3

9 or more Periods “Not Engaged”

% Not Engaged by School Sites and Subgroups

- SMUHSD Overall 7.6% Not Engaged
- AHS 4%, BHS 2%, CHS 8%, HHS 7%, MHS 5% & SMHS 10%
- Percentages are positive considering the environment
- PHS 79% includes Bridge students
- Attendance engagement rates are similar (or slightly better) to daily attendance rates historically, but far higher in specific subgroups
- Overall, SWD, EL 1-4, and LTEL are 2 or more times higher than the school site %
- ELD 1-4 CHS 36%, HHS 45%, PHS 74%, and SMHS 45%
- Pacific Islander students are 3 to 5 times greater than the overall site %
 - AHS 20%, CHS 16%, HHS 29%, MHS 18%, & SMHS 20%
- Latinx students are 2 to 3 times greater than overall site %
 - AHS 9%, BHS 6%, CHS 11%, HHS 18%, MHS 13%, and SMHS 21%

Independent Study Update

- Students continue to proceed through courses
 - Many successes and some struggles
 - Students are expected to be approaching 28% course completion by the end of this week (estimated 6-7% weekly progress)
- Instructional materials being dispensed to the few classes that needed them to start the year
- Support for student assignment completion is being organized by District office
- Over 550 students are enrolled district-wide in full-time and blended schedules

OFFERING THE PSAT AND SAT

PSAT:

Plan now is to administer to 10th and 11th Grade students in January. See

<https://collegereadiness.collegeboard.org/psat-nmsqt-psat-10/k12-educators>.

SAT/ACT:

- SAT will NOT be considered by UC and CSU's as an admission criteria
- Almost all U.S. Colleges and Universities are making the test "optional" for students
- Many local Saturday testing sites are no longer available to students
- Some Bay Area schools and districts are offering their students SAT testing opportunities
- **If health conditions permit**, the district plans to offer the this test to interested **SMUHSD seniors** on Wednesday, **October 14** during the school day (currently about 250 registered across all sites)
- The District is considering offering the ACT during its December date (Saturday) to seniors. The ACT is currently making arrangements for testing at a few local hotels

Outdoor Opportunities for Students

Learning Pods

- Scheduled to open on each comprehensive campus September 14 or later in the month
 - Outdoor Learning Spaces will have up to 14 students, with regular COVID-19 testing
 - Priority given to students who lack quality learning spaces at home

Athletic Conditioning

Scheduled to open at each comprehensive campus on September 15

- Coaches will have up to 14 students and comport to four pillars
- Students will be invited in the coming days
- Coaches will be trained and compensated

Open Tracks and Tennis Courts

- On September 1 school tracks and tennis Courts opened for student use 3:30 to 8:30 M-F for walking and running

Some Quotes from the Students!

“So far, many of my teachers are focused on using breakout rooms for group work, screen sharing to display class texts/how to interact with their specific CANVAS homepages, playing videos for the class, and mainly showing how to solve problems in math/physics. It's been a bit challenging sometimes with connectivity issues, but it's definitely also been a great adventure to be a part of.” (AHS, Senior)

“It's been good but kind of stressful at the same time because it feels like all the responsibility of being able to finish assignments, being on time for class, and staying updated with class schedules is on me” (CHS, Freshman)

Positive Surprises in Distance Learning

- **Classroom Community**
 - Students are “engaged, supportive, patient, kind, trying their hardest, eager to learn”
- **Engagement and Participation**
 - Chat feature in Zoom (whole class, self advocacy, reluctant speakers, 1:1 check ins)
 - Breakout rooms (efficiency of partner/group work)
- **Immediate Feedback & Formative Assessment**
 - Shared google slides, Classkick
 - Zoom polls, Google forms, Kahoot, Quizzes...
- **Distance Teaching**
 - “Digital learning can be engaging and fun!”

Support for English Learners

- **English Language Development task force:** administrators/counselor & teachers
- **Teacher Support:**
 - Collaboration meetings (week before school started)
 - Sharing of resources (virtual lessons, bilingual videos, etc)
- **Student Support:**
 - In-person orientations for ELD I newcomers at SMHS, HHS and Bridge
 - Materials distributions
 - Purchase of digital licences
 - Wrap around support: administrators, counselors, ELSs, FECs, ELD IAs
 - Access to chromebooks and hotspots

Students with IEP's

- Students are getting individualized support in Specialized Academic Instruction, Directed Studies, in Flex/office hours, and in their general education classes through assistance from Instructional Aides and co-teachers
- Vast majority are well engaged and are working with support staff using low and high tech tools
- Special education and general education colleagues collaborate to implement accommodations and accessibility to the curriculum/instruction using best practices

Students with IEP's Continued

- Staff identifies those students who are not engaged and are reaching out to determine the impediments and brainstorm potential solutions
- **Something Awesome happening at SMHS:**
Senior students have reached out to 9th graders to help them get acclimated to high school.
If parents have a question about their student with an IEP, they should reach out to their student's case manager

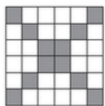
Teacher Collaboration and Support

- The Summer PD and PLC work provided opportunities for teachers to meet teachers and collaborate across the district
- This collaboration continues to be a bright spot during this time as teachers are able to meet virtually and share ideas in new ways
- The common Instruction Schedule across schools has supported the collaboration amongst staff

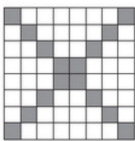




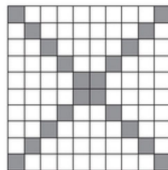
What do you notice?



Term 1



Term 2



Term 3

What did you notice?

Share

The squares get bigger

2



shaded squares

3



Three squares, each getting bigger.

2



squares

Each time the square got bigger by 1

3



they made the square one block larger each time

2



number 1 is the smallest one

2



The square would get bigger

Squares would get a bit bigger

2



the squares get bigger

1



the pattern kind of looked like an X

1



The squares got bigger

squares got bigger

1



The squares got bigger everytime

1



Share thoughts and/or images here

250



Post

Adapting the *Contemplate Then Calculate* routine using Nearpod and Google Slides



***** Submitted

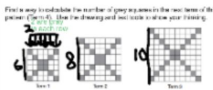
Awaiting drawing



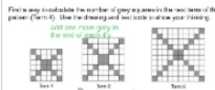
***** Submitted



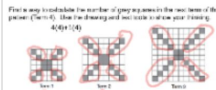
***** Submitted



***** Submitted



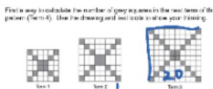
***** Submitted



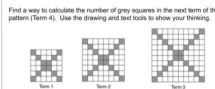
***** Submitted



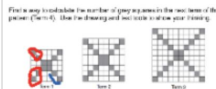
Awaiting drawing



***** Submitted



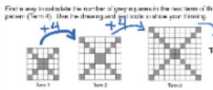
***** In Progress...



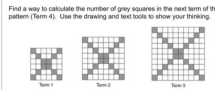
***** Submitted



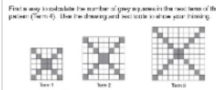
Awaiting drawing



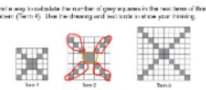
***** Submitted



***** In Progress...



***** Submitted

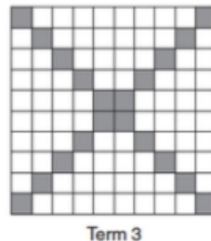
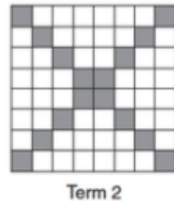
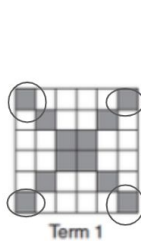


***** Submitted

Individual drawings in Nearpod can be pushed out to everyone's screen anonymously for discussion.

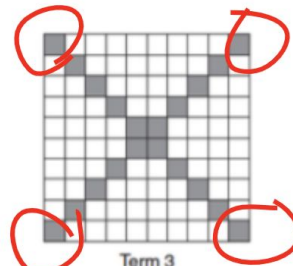
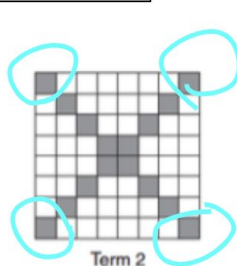
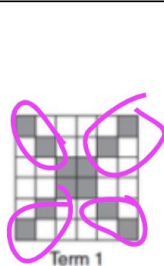
Breakout Group #9

Name: [Redacted]



I noticed it grows by 4 gray squares
I knew that there were 12 gray squares
in term 1 because I saw it as $4(2)+4$
So there are 16 in term 2, 20 in term 3,
and there would be 24 in term 4

Name: [Redacted]



I noticed that the
next term has 4
more so it would
be...

Term 1 $2(4)+4$

Term 2 $12+4=16$

Term 3 $16+4=20$

Term 4 $20+4=24$

I noticed... so I ...
I knew... so I ...
My strategy works because...

Students work collaboratively on shared slides during a breakout room. This is followed by an interactive class discussion or virtual gallery walk.

How do students access coursework in Canvas?

The image shows a screenshot of the Canvas LMS interface with several yellow callout boxes and arrows explaining how students access coursework. The interface includes a Global Navigation menu on the left, a Courses list, and a detailed course page for HIST 101.

Course specific information. (Arrow pointing to the course list)

Courses or Dashboard option in the Global Navigation menu. (Arrow pointing to the Global Navigation menu)

Course agenda or modules in the center of the page: (Arrow pointing to the Modules link in the course sidebar)

To Do list with upcoming assignments as well as recent feedback. (Arrow pointing to the To Do list on the right sidebar)

The interface elements shown include:

- Global Navigation menu:** Account, Dashboard, Courses, Groups, Calendar, Inbox, Help.
- Courses list:** Bio 101, History 101 (selected), Introduction to the Solar System, All Courses.
- COURSE SIDEBAR (HIST 101):** Modules, Assignments, Announcements, Discussions, Grades, People, Pages, Files, Syllabus, Outcomes, Quizzes, Conferences, Collaborations.
- Course Content:** Class Information (Class Reading, Position Paper, History Overview), Bill of Rights (Bill of Rights Introduction, Bill of Rights, A Closer Look: Reading, Bill of Rights Wrapup).
- Right Sidebar:** View Course Stream, View Course Calendar, To Do (Welcome to class!, Articles of Confederation vs. Constitution, Class Reading, Position Paper, History Overview, To Sign or Not to Sign Discussion, Bill of Rights Introduction), Course Groups (Study Group 1), Recent Feedback.

How do students access and submit assignments in Canvas?



To Do

- [Course Introductions](#)
- Lit Course** 2
Aug 16 at 11:59pm
- [Using your Microscope](#) x
Biology 101
Aug 16 at 11:59pm
- [Position Paper](#) x
- History 101** 1
25 points |
Aug 17 at 11:59pm
- [Position Paper \(M\)](#) x
History 101
25 points |
Aug 17 at 11:59pm
- [Structural and Content Fallacies](#) x
Biology 101
Aug 17 at 11:59pm

[Show All](#)

Assignments and due dates in the **To Do** list.

[File Upload](#) [Text Entry](#) [Website URL](#) [Media](#) [CK-12 Practice](#) [Google Drive](#)

Google Drive (LTI 1.3)

Upload a file, or choose a file you've already uploaded.

File: No file chosen

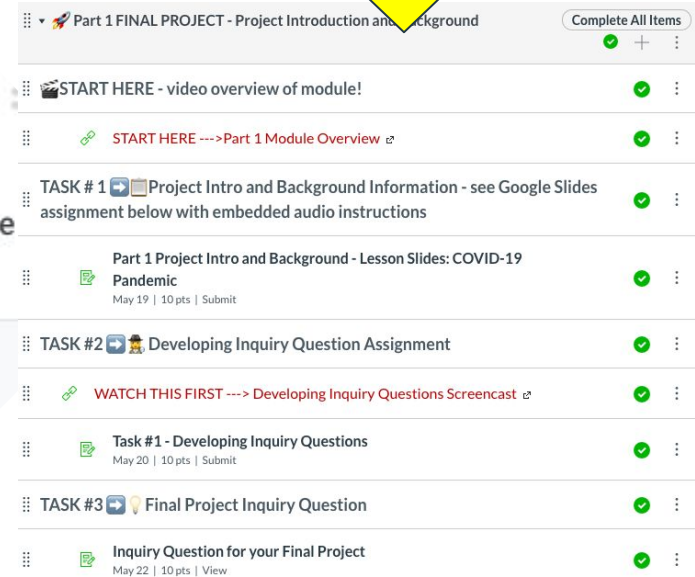
[+ Add Another File](#)

Many different submission types.



How do teachers provide feedback to students?

Assignments and projects broken down into smaller tasks with built in checkpoints to assess for student understanding and to give feedback.



Plant Genetics Paper
 Due at 11:00 am on 09/01

1/2
 55 / 60 (92%)
 Average

Bruce Jones

Page 1 of 5

 ZOOM

Lorem ipsum dolor sit amet, consectetur adipiscing elit. Nullam non arcu in dolor sodales vulputate sed eget tortor. Pellentesque vestibulum tellus non effendit gravida. Suspendisse sit amet velit non elit laoreet luctus. Maecenas eget vehicula magna. Mauris vestibulum metus eu diam fermentum, a condimentum tortor convallis. Suspendisse potenti. Pellentesque eget imperdiet sem, viverra laoreet lectus.

Vestibulum et elementum ante, vitae mattis tortor. Etiam eget ipsum sed nisl pretium interdum eget vel velit. Cras mattis velit a eil aliquet, qua pretium enim laoreet. Sed ultrices at libero et cursus. Mauris eros dolor, bibendum vel suscipit tringilla, efficitur at tortor. Duis laoreet suscipit metus, vel aliquam massa blandit ac. Vivamus non consectetur dolor. Donec semper dolor in neque consequat, condimentum sagittis enim placerat. Integer lacina velit id aliquam, eu congue enim consectetur. In eget augue arcu. Fusce interdum, leo a fermentum tringilla, dui nunc laoreet leo, et dictum lectus justo vel dolor. Donec et enim eget arcu tristique agrestis. Quam sociis natoque penatibus et magnis dis parturient montes, nascetur ridiculus mus. Aliquam placerat est odio, sit amet consequat nibh viverra vel.

Nulla interdum gravida lectus in convallis. Proin et risus magna. Donec sodales varis sem, ac facilisis augue posuere in. Morbi mauris lectus, lacina qui odio nec, vulgupt vulgupt augue. Disenect dictum et ante, nunc dicitur arcu inconvallis sed. Consectetur a sedibus a.

Submitted: Jul 8 at 4:12pm

Submitted file(s) (click to load)

[Assignment.docx](#)

Assessment

Grade (55.8 / 60)

[Use this same grade for the reubmission](#)

[View Rubric](#)

Assignment Comments

[Add a Comment](#)

[Submit](#)

Teachers view student submissions in **Speedgrader** within Canvas.

Student work
assessed using a
rubric.

Teacher enters
text, audio or
video comments.

Add Text Comment

Assignment Comments

Add a Comment



Add Media Comment

Assignment Comments

Add a Comment

Submit

How do students access feedback?



1 To Do

Pre-Test

Introduction to the Solar System

20 points | Jan 11 at 11:59pm

Classroom Change

Zoology 101

Jan 12 at 12am

Overview

Classic Literature

Jan 14 at 12pm

2 Recent Feedback

✓ Reading Assignment

Bio 101

20 out of 20

"You did a great job! I especially liked the point you made in the 3rd paragraph."

3 View Grades

Students can access **Recent Feedback** in the activity stream below the **To Do** list.

Assignment Comments

Good job on the assignment! Your thesis is strong!

1 Doug Roberts, Jul 12 at 1:34pm

Remember to cite your sources.

2 Doug Roberts, Jul 12 at 1:35pm

Add a Comment

Submit

Students can **View Grades** from the **Activity Stream**.

Technology Update and Challenges

- Efforts need to be made to reduce screen time for students & teachers
- Providing guidance to staff on ways to create sustainable zoom environments
- Today 400 hotspots were delivered to schools, bringing total to 1400, not counting the 200 from 1million project
- All campuses have outdoor learning spaces with high speed wifi, thanks to maintenance department
- District has enough Chromebooks to meet 1:1 standard
- Students and teachers face challenges with connectivity strength and Chromebook capabilities
- Instructional tools are stretching our Chromebook's capacities
- Resource differences among families are hard to overcome

Weekly Learning Schedule

- This item will be discussed at an upcoming Board meeting
- Wednesday schedule and overall screen time seem to be biggest issues with learning schedule - this will be affirmed/disconfirmed by Back-to-School survey to be administered next week to ALL students.

Distance Learning for Remainder of Semester/Trimester

Staff recommends the district remain in distance learning for virtually all students for the remainder of the semester at comprehensive schools and Peninsula High School through at least its first trimester (November 11).

Note - There could be exceptions for experiences that have a particular need to be on campus, small groups for outdoor experiences, physical activities or performance based activities. All state and local health mandates would be followed. Need to work with various groups to start figuring out how we return

Questions & Feedback