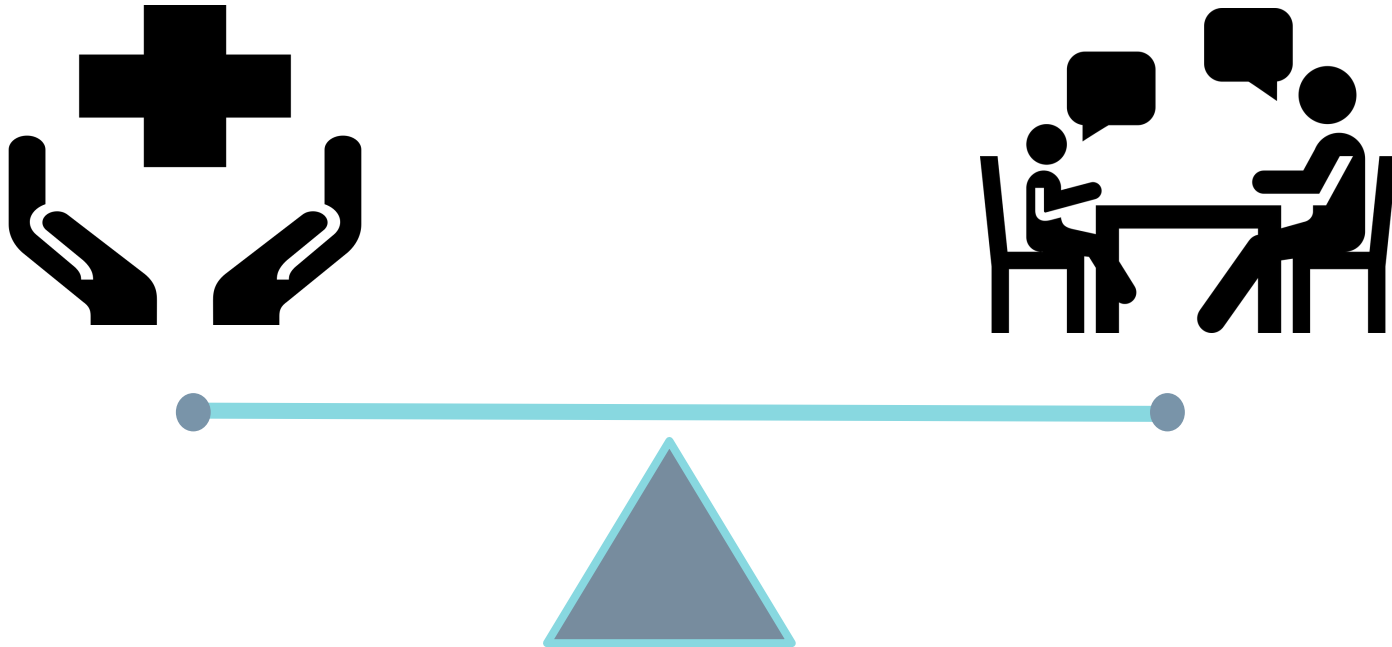


# 6-8 In-Person Blended Model

Preparing to bring LASD 6-8  
students back in January



# Balance Health and Safety with In-Person Learning



# SCCPHD Organizing Principle

Organizing Principle:  
Stable Cohorts

Organizing Principle:  
Physical Distancing and  
Face Coverings

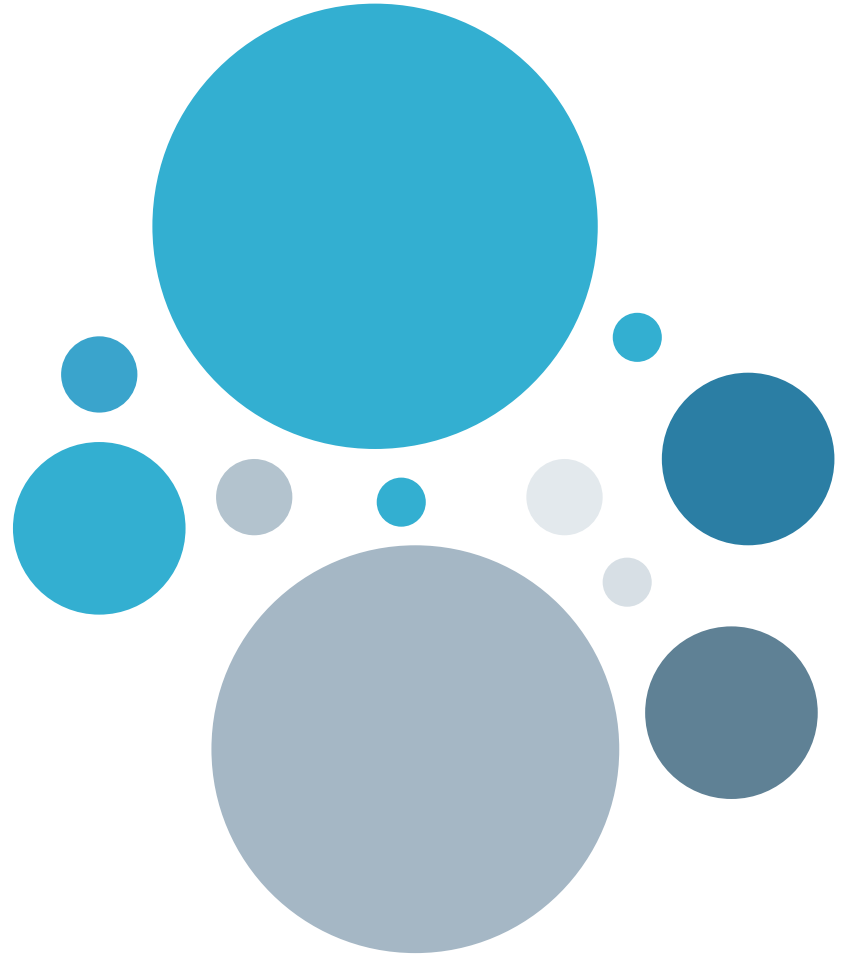


- Students and staff will be required to complete a health screener ***prior to arriving on campus***
- Students will be assigned to sit in specific seats in the classroom - 6 foot spacing at all times
- Teachers will rotate classrooms and will remain 6 feet away from students

# TEACHER CONSULTATION

6th grade teachers &  
junior high school principals and  
teacher team

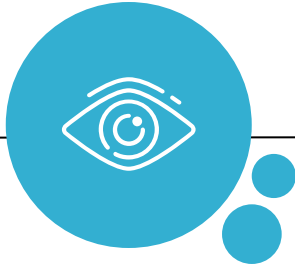
# ELEMENTARY PRINCIPAL CONSULTATION



# 6th Grade Challenges

**CREATIVITY  
WELCOMED**

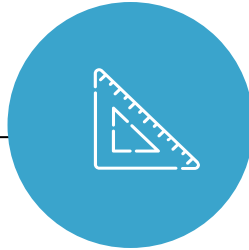
**SCHOOLS  
VARY**



**Rotations**

Each school does rotations differently

**DISTANCING  
MONITORING**



**Recess & Lunch**

This is an additional challenge for staff

**DENSE  
CONTENT**



**Complexity**

Each core content area is preparation for 6-12 success

# Original Hybrid A/B Schedule -

where we started\* times are approximate

<b>MONDAY - A Cohort</b>	<b>TUESDAY - A Cohort</b>	<b>WEDNESDAY</b>	<b>THURSDAY - B Cohort</b>	<b>FRIDAY - B Cohort</b>
8:30 arrival	8:30 arrival	8:30 virtual Morning Meeting	8:30 arrival	8:30 arrival
45 minute recess/lunch combo	45 minute recess/lunch combo	Asynchronous work time for students	45 minute recess/lunch combo	45 minute recess/lunch combo
1:20 dismissal	1:20 dismissal		1:20 dismissal	1:20 dismissal
B Cohort Virtual Class 1:50-2:50	B Cohort Virtual Class 1:50-2:50		A Cohort Virtual Class 1:50-2:50	A Cohort Virtual Class 1:50-2:50

# Student A/B Schedule - Cohort A

MONDAY - A Cohort	TUESDAY - A Cohort	WEDNESDAY A Cohort	THURSDAY - A Cohort	FRIDAY - A Cohort
8:30 arrival	8:30 arrival	8:30 virtual Morning Meeting	Asynchronous work time for students	Asynchronous work time for students
45 minute recess/lunch combo	45 minute recess/lunch combo	Asynchronous work time for students		
1:20 dismissal	1:20 dismissal			
Asynchronous work time for students	Asynchronous work time for students		A Cohort Virtual Class 1:50-2:50	A Cohort Virtual Class 1:50-2:50

# Considerations

## A/B Blended Schedule

This schedule follows the K-5 A/B blended learning schedule, with a slightly shorter in-person day to allow for a longer at-home session to stay on top of 6th grade curriculum demands.

Provides break time on campus for students to socialize.

---

### CHALLENGES

Less interaction with teacher rotations on at-home days

Supervision schedule on campus



# AM/PM SCHEDULE

## 4 days per week

\* times are approximate

8:30-11:15am	AM Group
DISINFECTING	
12:05-2:50pm	PM Group



# Student Schedule - AM Schedule\* times are approximate

Monday AM Cohort	Tuesday AM Cohort	Wednesday	Thursday AM Cohort	Friday AM Cohort
8:30 arrival	8:30 arrival	Whole Class Morning Meeting	8:30 arrival	8:30 arrival
In-person learning at school	In-person learning at school		In-person learning at school	In-person learning at school
11:15 dismissal	11:15 dismissal	Asynchronous Work	11:15 dismissal	11:15 dismissal
Travel & Lunch	Travel & Lunch		Travel & Lunch	Travel & Lunch
Asynchronous Work	Asynchronous Work		Asynchronous Work	Asynchronous Work

# Student Schedule - PM Schedule\* times are approximate

Monday PM Cohort	Tuesday PM Cohort	Wednesday	Thursday PM Cohort	Friday PM Cohort
Asynchronous Work	Asynchronous Work	Whole Class Morning Meeting	Asynchronous Work	Asynchronous Work
Lunch & Travel	Lunch & Travel	Asynchronous Work	Lunch & Travel	Lunch & Travel
12:05 arrival	12:05 arrival		12:05 arrival	12:05 arrival
In-person learning at school	In-person learning at school		In-person learning at school	In-person learning at school
2:50 dismissal	2:50 dismissal		2:50 dismissal	2:50 dismissal

# Considerations

## AM/PM Blended Schedule

More frequent in-person time allows for regular rotations and more accountability for work completion

Provides site flexibility to meet the needs of students - rotations and focus content can vary each week based on need

Minimal break time during academics - special social connections for 6th grade cohorts planned

---

## CHALLENGES

Family disruption with different model

# RECOMMENDATION

Move forward with AM/PM  
Schedule for 6th grade only.

- ❑ Allows us to keep the rigor of our unique sixth grade program
- ❑ Disinfecting two rooms mid-day is possible at all sites
- ❑ Allowable social opportunities will be embedded into the schedule





# **Junior High School Plan**



**The TEAM 01**

**The Process 02**

**Our Driving and  
Organizing Principles 03**

**Schedule Samples 04**

# The Junior High Team

Coni Cullimore (Teacher In Charge)

Patty Clavijo (French)

Jason Dewberry ( History and Teacher  
In Charge)

Hannah Garcia (Secretary)

Riley Haggin ( History)

Mollie Kesselring (Special  
Education/IST)

Pat Koren (PE/Math)

Brandon Marquis (Special Education)

Josh Molskness (English)

Andrea Olarig (Science)

Betty Tsang (Math)

Sugey Jimenez- Williams (Secretary)

Bhavna Narula (Principal)

Keith Rocha (Principal)

Sandra McGonagle (Asst.  
Superintendent)



# The Process



**Discussed Goals**

**Discussed Outcomes**

**Reviewed teacher feedback**

**Brainstormed a series of schedule  
options (over 10!)**

**Narrowed focus/Consensus  
Building**

**Combined qualities of schedules**

**Decision Making**



# Driving Principles

**Social/Emotional Learning & Support**

**In-person community/socializing with peers**

**Support Struggling Students**

**Robust Instructional Practices**

**Equity in educational practice**

**(not cohorting by math pathway)**



# Organizing Principles

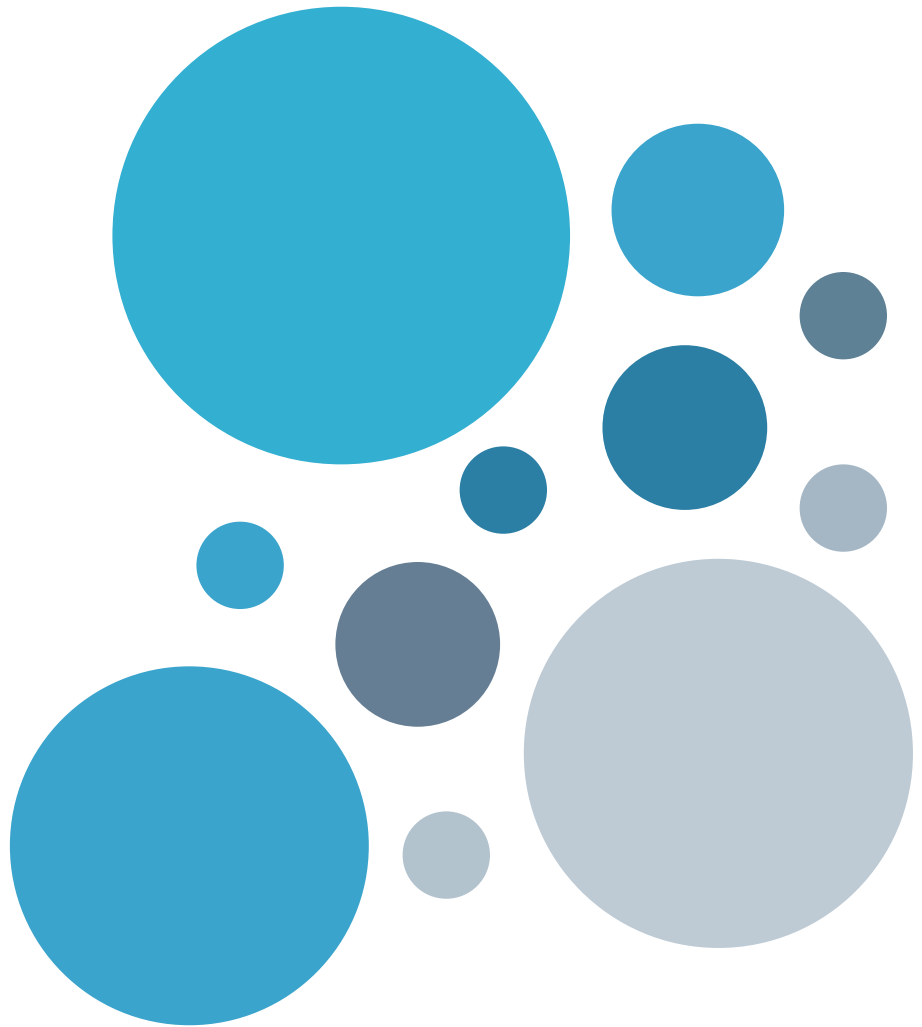
- In person 4 periods
  - (English, Science, History, Advisory/ Guided Study and SPED support)
- Heterogeneous Cohorts 15-18
- Teacher teams rotate
- Math - 4 days a week virtual
- 4 Synchronous days (M,T, Th,F- 2 in person and 2 Live Virtual)
- Advisory Wed. Only virtual
- Social Emotional Learning embedded
- Extended Day for at-promise students
- Virtual Students follow the same cohort based schedule

# Organizing Principles

Students selecting **the Virtual School Model** will receive all of their instruction online following the same bell schedule as those in the hybrid program.

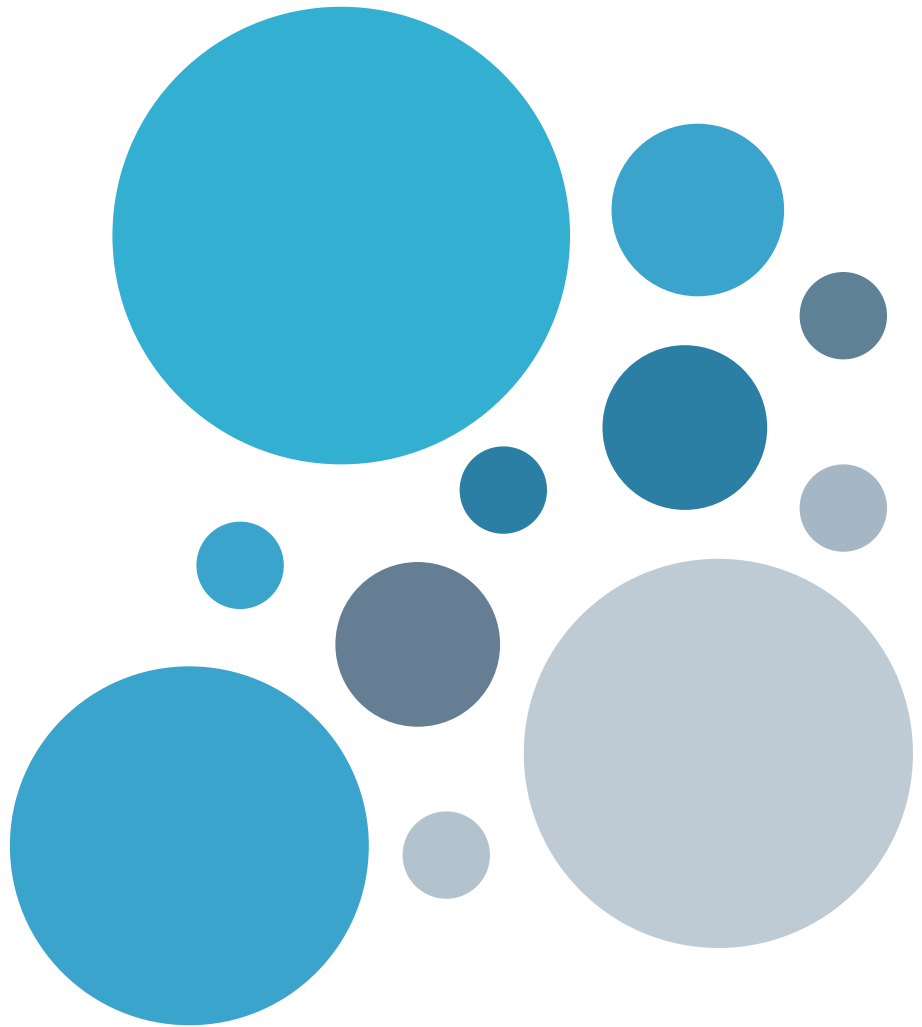
**Regardless of learning model choice**, students may experience a change in the order of their courses and/or they may be assigned different teachers.

# Hybrid Cohort A Student Schedule



<b>MONDAY - (On Campus)</b>	<b>TUESDAY - (On Campus)</b>	<b>WEDNESDAY</b>	<b>THURSDAY (At Home)</b>	<b>FRIDAY (At Home)</b>
8:30 <b>arrival</b>	8:30 <b>arrival</b>	8:30 Advisory	8:30 start	8:30 start
Periods 1-4 (Sci, His.Eng., Support)-approx. 50 min.	Periods 1-4 (Sci, His.Eng., Support)	Asynchronous work time for students	Math Block (approx. 75 min.)	Math Block (approx. 75 min.)
12:05-1:05 <b>dismissal and lunch at home)</b>	12:05-1:05 <b>dismissal and lunch at home)</b>		Elective/PE (approx. 75 min.)	Elective/PE (approx. 75 min.)
1:05-3:00 (at home) Virtual Math Class (approx. 35 min) Virtual Elective/PE (approx. 35 min)	1:05-3:00 (at home) Virtual Math Class (approx. 35 min) Virtual Elective/PE (approx. 35 min)		1:05-3:00 English (approx. 35 min.)  History/Science (approx. 35 min.)	1:05-3:00 English (approx. 35 min.)  History/Science (approx. 35 min.)

# Hybrid Cohort B Student Schedule



<b>MONDAY - (At Home)</b>	<b>TUESDAY - (At Home)</b>	<b>WEDNESDAY</b>	<b>THURSDAY - (On Campus)</b>	<b>FRIDAY - (On Campus)</b>
8:30 start	8:30 start	8:30 Advisory	8:30 <b>arrival</b>	8:30 <b>arrival</b>
Math Block (approx. 75 min.)	Math Block (approx. 75 min.)	Asynchronous work time for students	Periods 1-4 (Sci, His.Eng., Support)-approx. 50 min.	Periods 1-4 (Sci, His.Eng., Support)
Elective/PE (approx. 75 min.)	Elective/PE (approx. 75 min.)		12:05-1:05 <b>dismissal and lunch at home)</b>	12:05-1:05 <b>dismissal and lunch at home)</b>
1:05-3:00 English (approx. 35 min.)  History/Science (approx. 35 min.)	1:05-3:00 English (approx. 35 min.)  History/Science (approx. 35 min.)		1:05-3:00 (at home) Virtual Math Class (approx. 35 min) Virtual Elective/PE (approx. 35 min)	1:05-3:00 (at home) Virtual Math Class (approx. 35 min) Virtual Elective/PE (approx. 35 min)



# Next Steps

- ❑ Principals working on logistics with site operations teams
- ❑ Upcoming Town Hall dates: TBD - shared at Board meeting

	Grade 6	Grade 7-8 (and All Grades)
Return Date	Jan. 11	Jan. 20
Program Switch Deadline	Dec. 7	Dec. 7



# Questions

CREDITS: This presentation template was created by Slidesgo, including icons by Flaticon, and infographics & images by Freepik.

Please keep this slide for attribution.