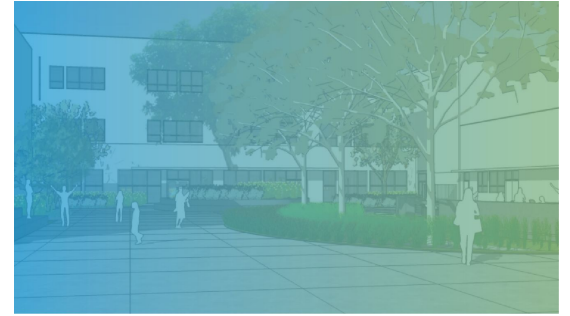




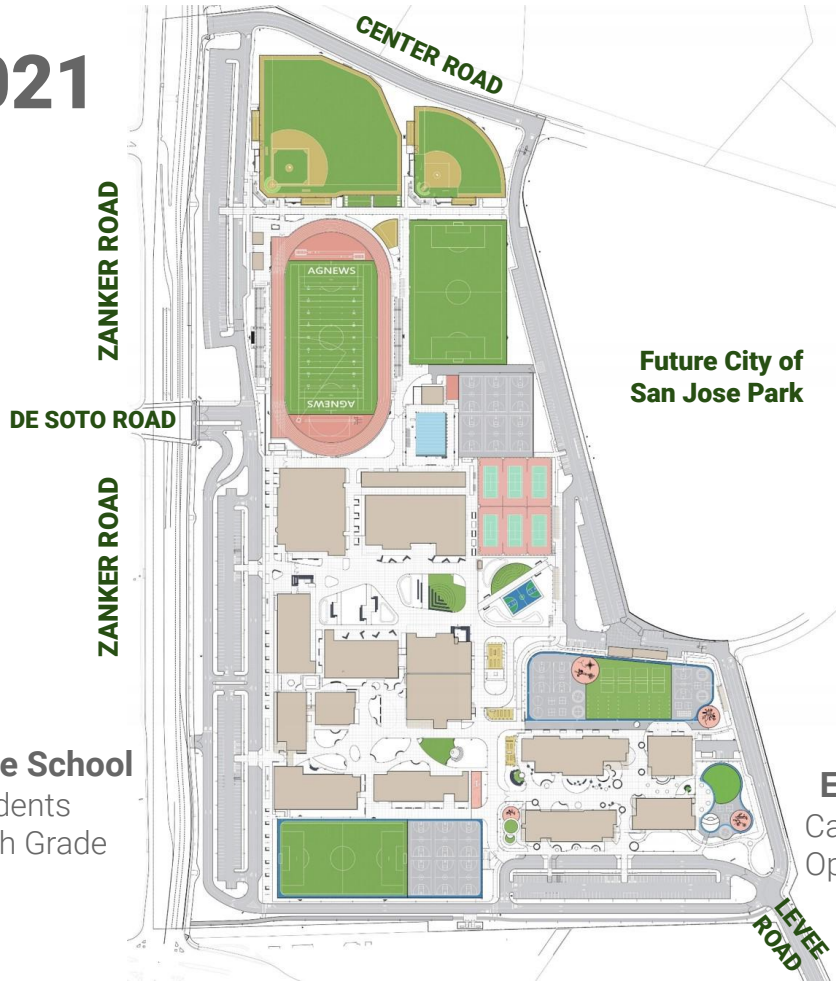
Abram Agnew Elementary School Dolores Huerta Middle School



Opening August 2021

Dolores Huerta Middle School

Capacity: 1000 Students
Opening Fall 2021 - 6th Grade

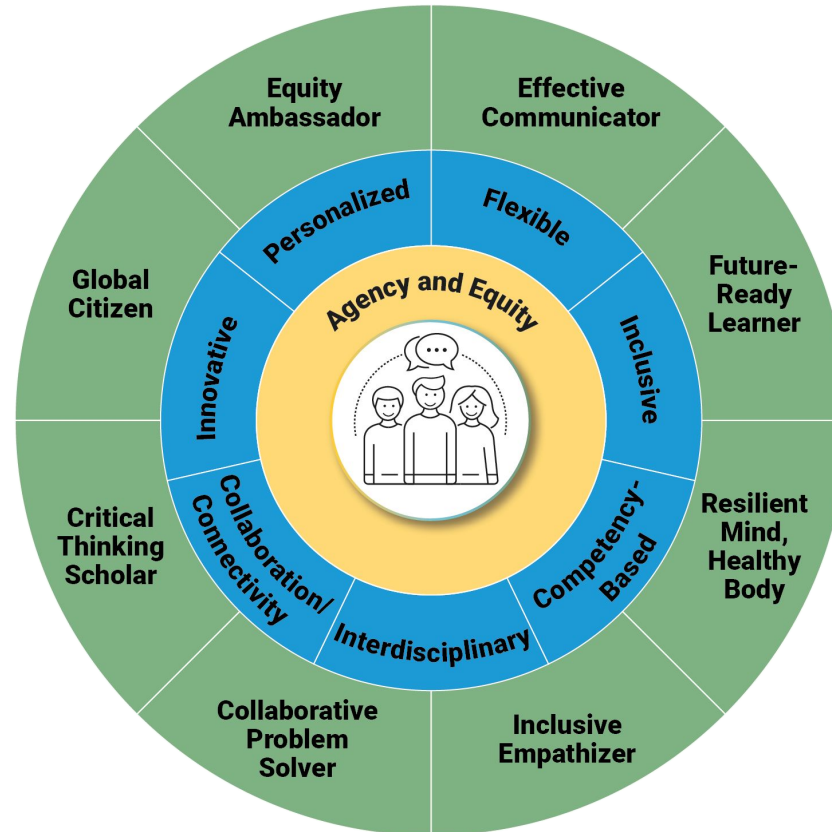


Future City of
San Jose Park

Abram Agnew Elementary School

Capacity: 600 Students
Opening Fall 2021 - K-2

School Design Framework





Equity

“Educational equity means that each child receives what they need to develop to their full academic and social potential.”

(The National Equity Project)



Agency

“Student agency refers to learning through activities that are meaningful and relevant to learners, driven by their interests, and often self-initiated with appropriate guidance from teachers. To put it simply, student agency gives students voice and often, choice, in how they learn.”

(Renaissance Learning)

Guiding Principles





Inclusive

“The goal of inclusive design for learning is to take advantage of human diversity during the design process, to build learning experiences that not only adapt to each learner, but also empower each learner to contribute to the design of their own learning.”

(Vision 2035)





Collaboration and Connectivity

“Collaboration is the capacity to work interdependently and synergistically in teams with strong interpersonal and team-related skills including effective management of team dynamics, making substantive decisions together, and learning from and contributing to the learning of others.”

(Michael Fullan)

Connectivity: “Students possess a global consciousness and sense of responsibility. They can see beyond themselves and recognize the connectedness of the broader world. They can think systemically and differentiate between the local and global.”

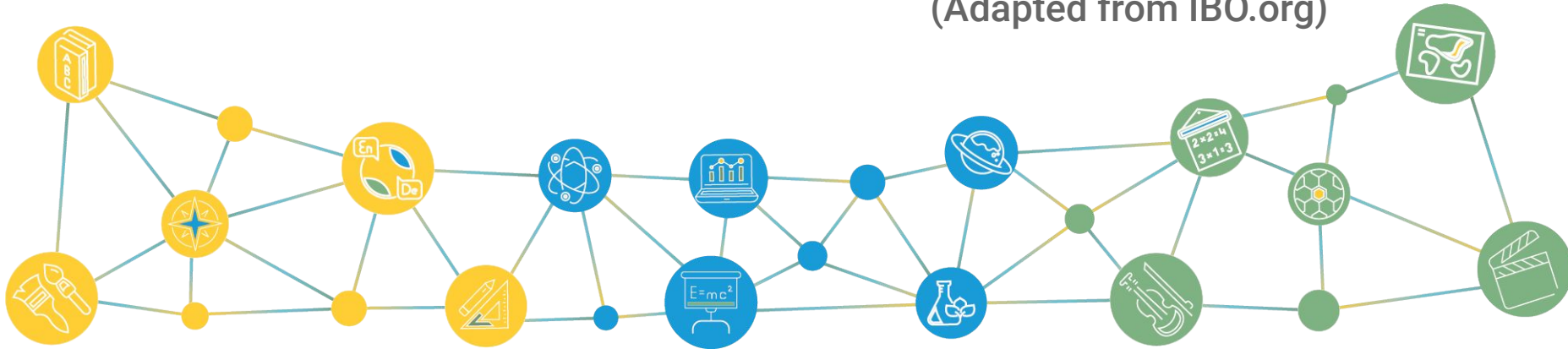
(Vision 2035)



Interdisciplinary

The process by which students come to synthesize concepts and modes of thinking from two or more disciplines or subjects and create a new understanding in order to examine a central theme, issue, problem, topic, or experience.

(Adapted from IBO.org)





Competency-Based, Personalized



Agency

Students make daily important decisions about their learning experiences, how they will create and apply knowledge, and how they will demonstrate their learning.



Equity

Strategies to ensure equity for all students are embedded in the culture, structure, and pedagogy of schools and education systems.



Supports

Students receive timely, differentiated support based on individual learning needs.



Mastery

Students' progress based on evidence of mastery, not seat time.

(Knowledge Works)



Competency-Based, Personalized



Pathways and Pacing

Students learn actively using different pathways and varied pacing.



Assessment

Assessment is a meaningful, positive, and empowering learning experience for students that yields timely, relevant, actionable evidence.



Competencies

Rigorous, common expectations for learning (knowledge, skills, and dispositions), are explicit, transparent, measurable, and transferable.

(Knowledge Works)



Inquiry-Based

Inquiry-based teaching is a pedagogical approach where students explore academic content by posing, investigating, and answering questions. Also known as problem-based teaching or simply as 'inquiry,' this approach puts students' questions at the center of the curriculum, and places just as much value on the component skills of research as it does on knowledge and understanding of content.

(Adapted from Center for Inspired Teaching)



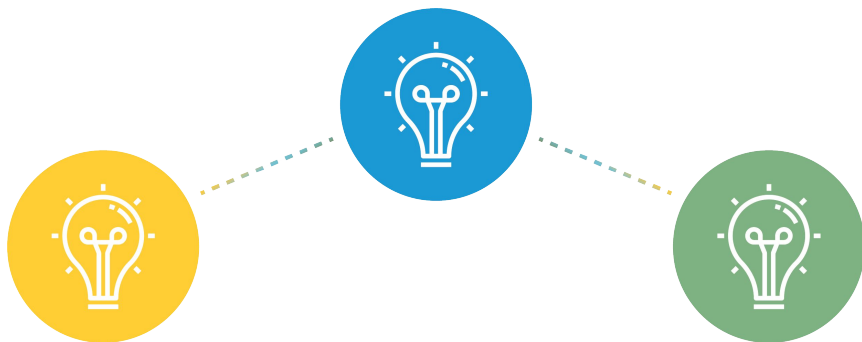
 **Flexible** **Spaces** **Grouping** **Time**



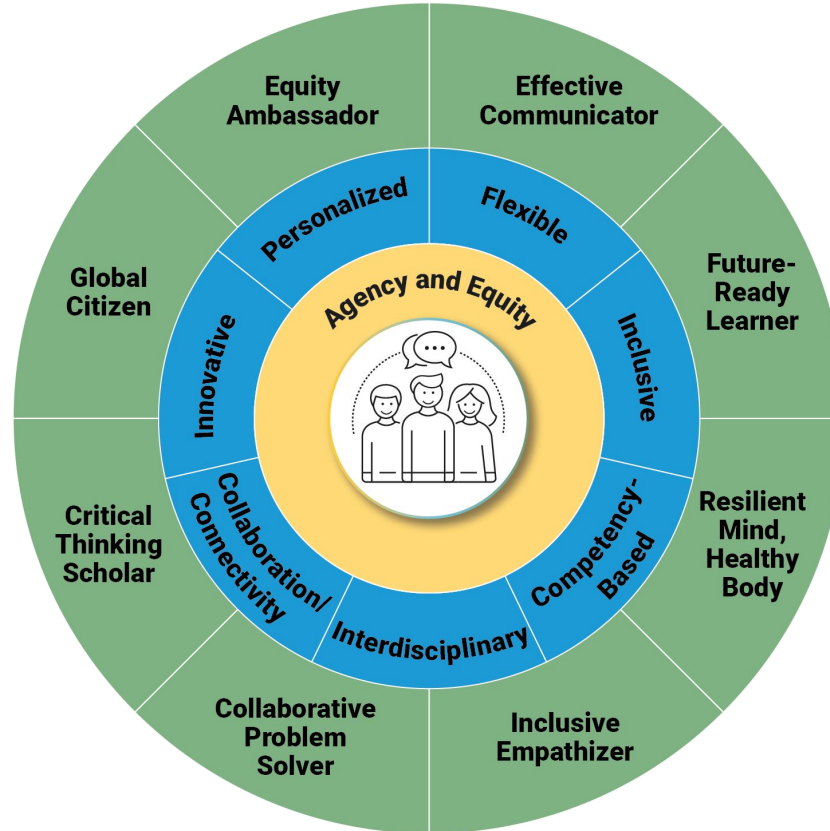
Innovative

Innovation is “a way of thinking that creates something new and better...either ‘invention’ or ‘iteration,’ but if it does not meet the idea of ‘new *and* better,’ it is not innovative.”

(George Couros, *The Innovator's Mindset*)



School Design Framework



Timeline

Design Team
October - March

Staff Info Sessions
December - February

Professional Learning
May - June & August

October November December January February March April May June July August

Family Outreach
December - January

Hiring
January - May



**School
Opening**

Community Outreach Information



Informational letter will be sent to all the households in the attendance area: November 16, 2020



Community Information Sessions: December 3 and 12, 2020; January 12, 2021



Open Enrollment Window: January 6 - February 5, 2021

Feedback & Comments