



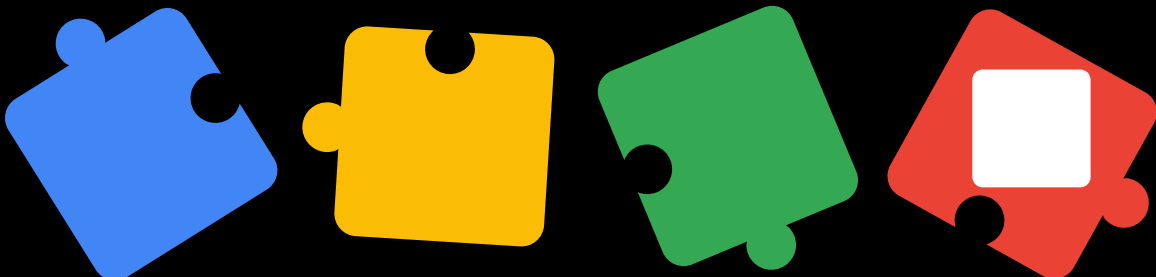
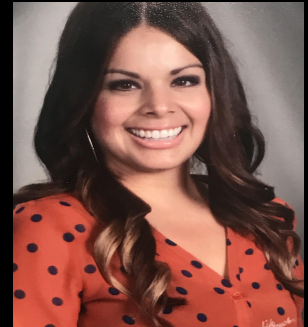
Creating Innovative, Engaging, & Culturally Relevant Lessons During Distance Learning

By: Jeselle Mata,
Nicole Rabago, and
Janette Tyrone

Jeselle Mata, *Instructional Coach at McKibben Elementary*



- Collaborate and support teachers with lesson planning, analysis of student data, and provide teachers with designing instructional supports within the classroom.
- Partnered with Mrs. Nicole Rabago on creating a series of lessons with the focus on student engagement, rigor, and incorporating District initiatives (particularly during Distance Learning)



STEP # 1

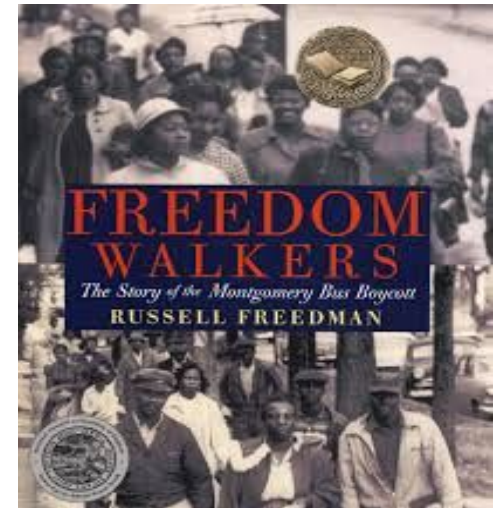
Coaching Cycle

- Identified an academic standard

- **Area of focus:**

- Student engagement
- Text to Self connection
- ELPAC domains
- Rigor during distance learning

- Student book: Freedom Walkers



1950's



2020



STEP # 2

Lesson Planning

- Intentional planning: EL students (13 out of 26 students) and differentiated instruction for all learners (high achieving, grade level, and struggling students)
- Internalizing student learning & identifying cultural relevance: Drew connections of the civil rights Marches of 1950's to our current climate
- Integrated District initiatives: GLAD, Thinking Maps into the lesson, as well as ELPAC Domains Test Prep

Then

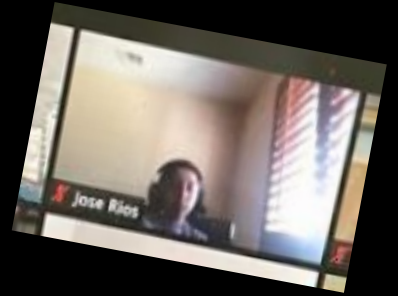
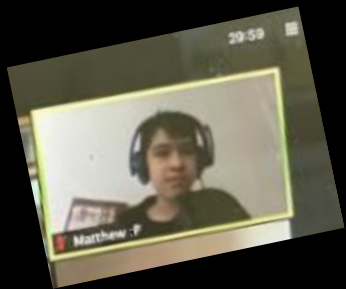


Now



The Final Lesson Plan

- **GLAD** observation chart with images of Freedom Walker story events and present day protest
- Students respond to images using jamboard; incorporation of music, news clips
- Class discussion/reflection **ELPAC Test Prep (Speaking Domain)**
- **Thinking Map**
- **Written Reflection (Writing Domain)**

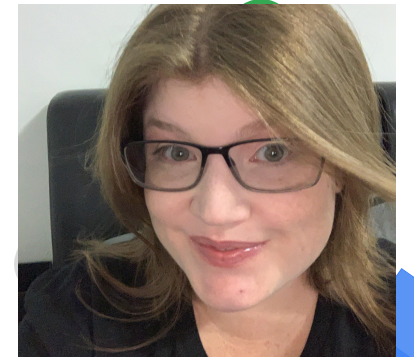
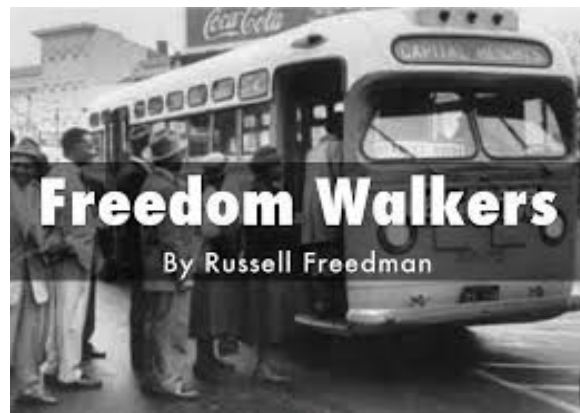


**Let's relive the lesson through
the eyes of a student...**

Lesson Delivery, Mrs. Rabago 6th Teacher



Freedom Walkers Lesson





Mrs. Jan Tyrone, *Principal*

Lesson Takeaways:

- Effectiveness
- Student Engagement
- Standards Aligned
- Distance Learning lesson planning



Mrs. Mata's Coaching Cycle Debrief

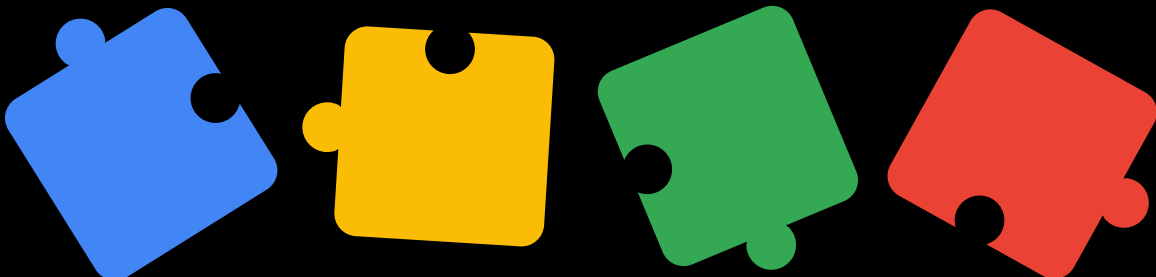


Planning Pre-COVID Dismissal

- Mrs. Rabago & I discuss lesson's successes/challenges

NEXT STEPS...

- Started collaborating with Mrs. Rabago on unit closure incorporating **GLAD** Comparative Input Chart
- Students will be watching clip of documentary: Prom Night In Mississippi (Segregated Prom in 2008)
- Students reporting the similarities/differences between the 1950's & 2020 (**ELPAC Speaking Domain**)



Coaching Model for the 2020–2021 School Year:

Getting our students to raise
their hand in a digital
classroom!

