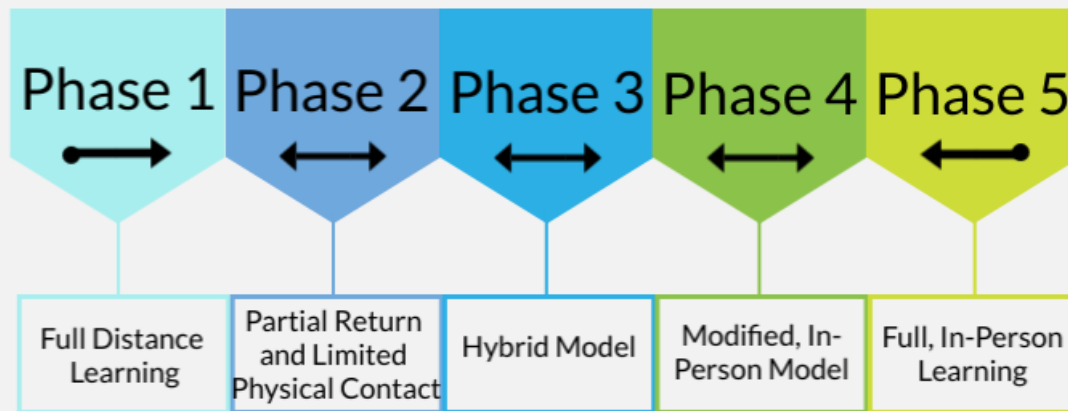




Steps to Return to Campus

January 16, 2021

Phased Return to Campus Plan





Staff & Family Survey Data



Reopening Criteria and
Stakeholder Engagement



Reopening Models and
Stakeholder Engagement



Model Selection



Reopening Actions

Roadmap to Phase 3



Variables



Infection Rates



County/State/National
Policies



Regional School District
Developments



Staffing and Employee
Agreements

State Tiered Monitoring System

County risk level	New cases	positive tests
WIDESPREAD Many non-essential indoor business operations are closed	More than 7 daily new cases (per 100k)	More than 8% positive tests
SUBSTANTIAL Some non-essential indoor business operations are closed	4 - 7 daily new cases (per 100k)	5 - 8% positive tests
MODERATE Some indoor business operations are open with modifications	1 - 3.9 daily new cases (per 100k)	2 - 4.9% positive tests
MINIMAL Most indoor business operations are open with modifications	Less than 1 daily new cases (per 100k)	Less than 2% positive tests

Health Indicators

State Tiered Monitoring System

- January 12

Last Week's Tier Level (As of 1/5)	This Week's Tier Level (As of 1/12)
38.5 Adjusted Case Rate	46.7 Adjusted Case Rate
10.1% Positivity Rate (7-day avg.)	11.7% Positivity Rate (7-day avg.)
17.9% Health Equity Quartile Positivity Rate	17.7% Health Equity Quartile Positivity Rate
Yolo County will remain in the Purple Tier (Widespread) until at least: January 26, 2021* * This date may change. Tier assignment will be overruled if the Regional Stay Home Order is issued.	
Regional Stay Home Order Exit:	Effective: 01/12/21 The Greater Sacramento Region is no longer under the Regional Stay Home Order and now falls back under the State's Blueprint for a Safer Economy's tiered framework.

Health Indicators

Based on Yolo County Data

- January 13

Total Cases

9,500

60 Reported 1/13

Test Positivity Rate

8.1%

From 12/29-1/04

Daily Testing Positivity Rate



DJUSD Infection Data

Positive COVID -19 CASES (self -reported)

	Staff	Students
July-August	2	1
September	0	1
October	1	6
November	7	20
December	11	38
January	4	25

Total Cases

Student Cases
91

Staff Cases
25

Active Cases

Student Active Cases
11

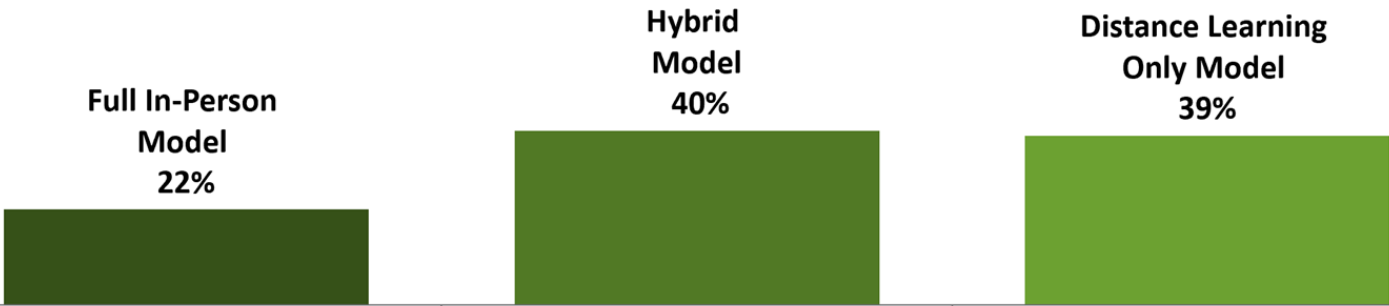
Staff Active Cases
8

Preferred Model: Initial Ask



Respondents are divided on their preference of learning model; however, more respondents prefer a hybrid or distance learning only model over a full in-person model.

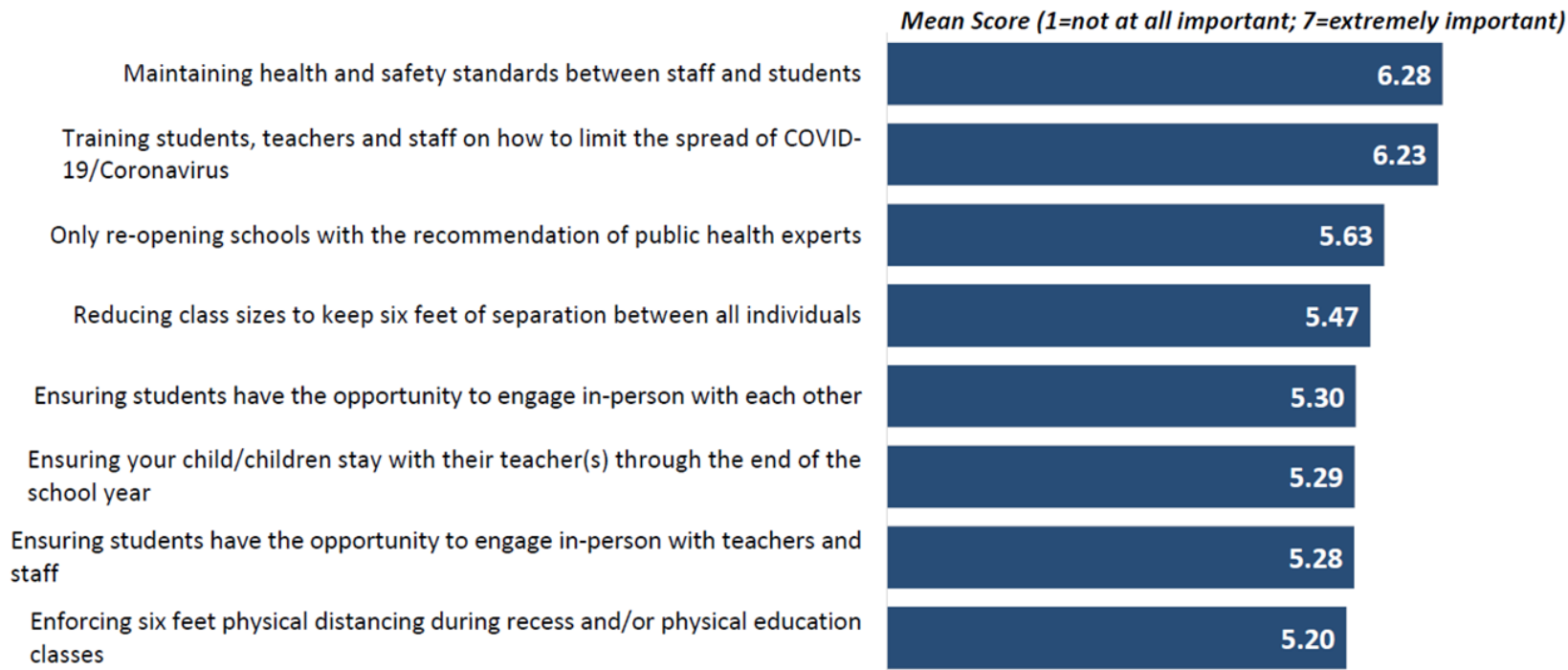
As you know, the outlook regarding the COVID-19 pandemic is difficult to predict and the options for school openings may continue to change. Nevertheless, DJUSD would like your opinion on the following. Based on how you feel today, which of the following models would you choose for your child/children?



Q22. Based on how you feel today , which of the following models would you choose for your [child/children]? [IF UNDECIDED:] You didn't indicate which model you prefer. Which model do you lean towards? *Note: Leans percentages are minimal, total percentages are shown*

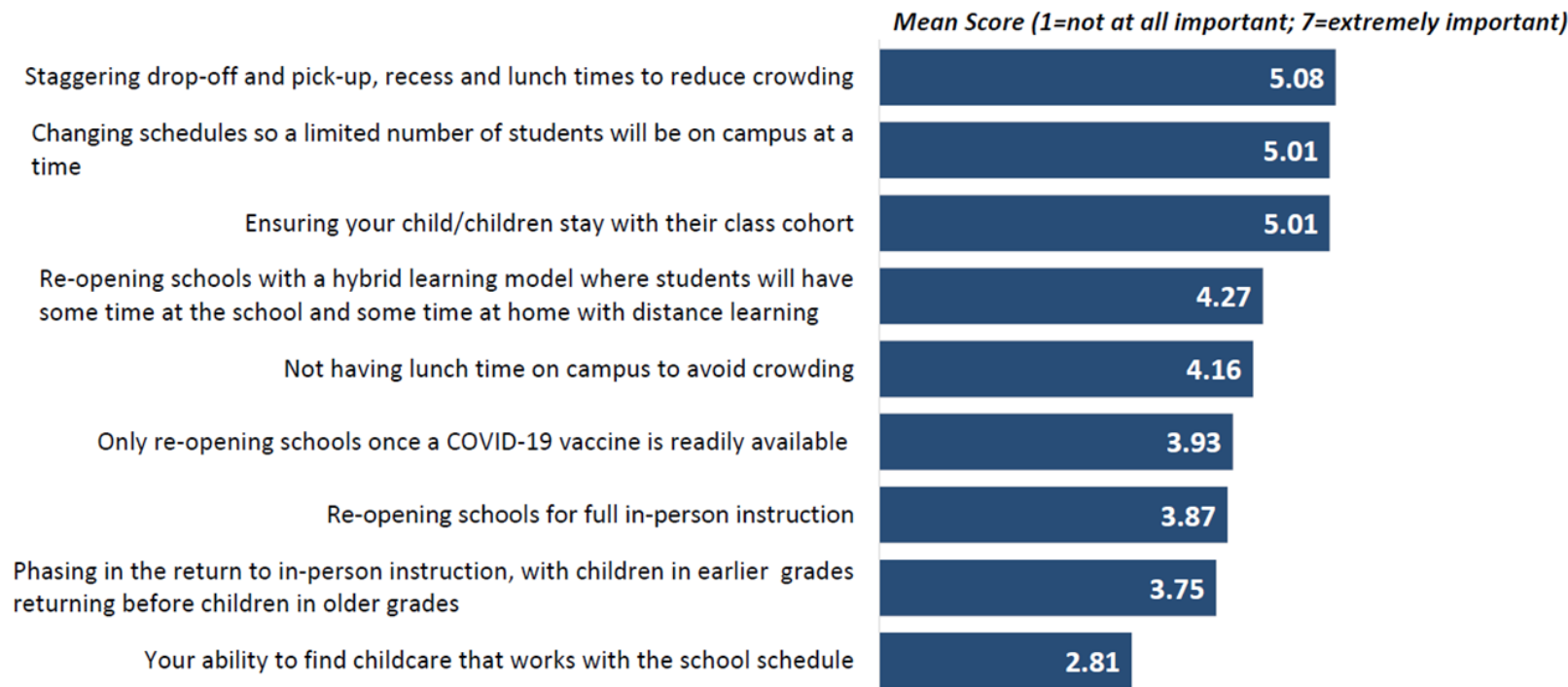
Factors for Re-Opening

General safety precautions are important to many.



Factors for Re-Opening

Other factors are also important to many; however, ability to find childcare falls to the bottom of the list.

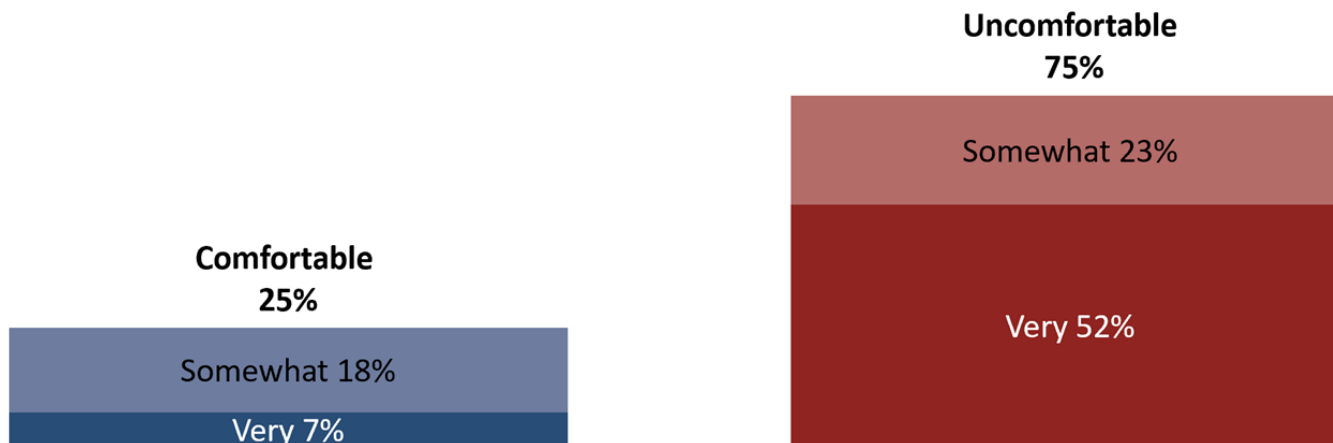


Comfort with Students Returning: Initial Ask



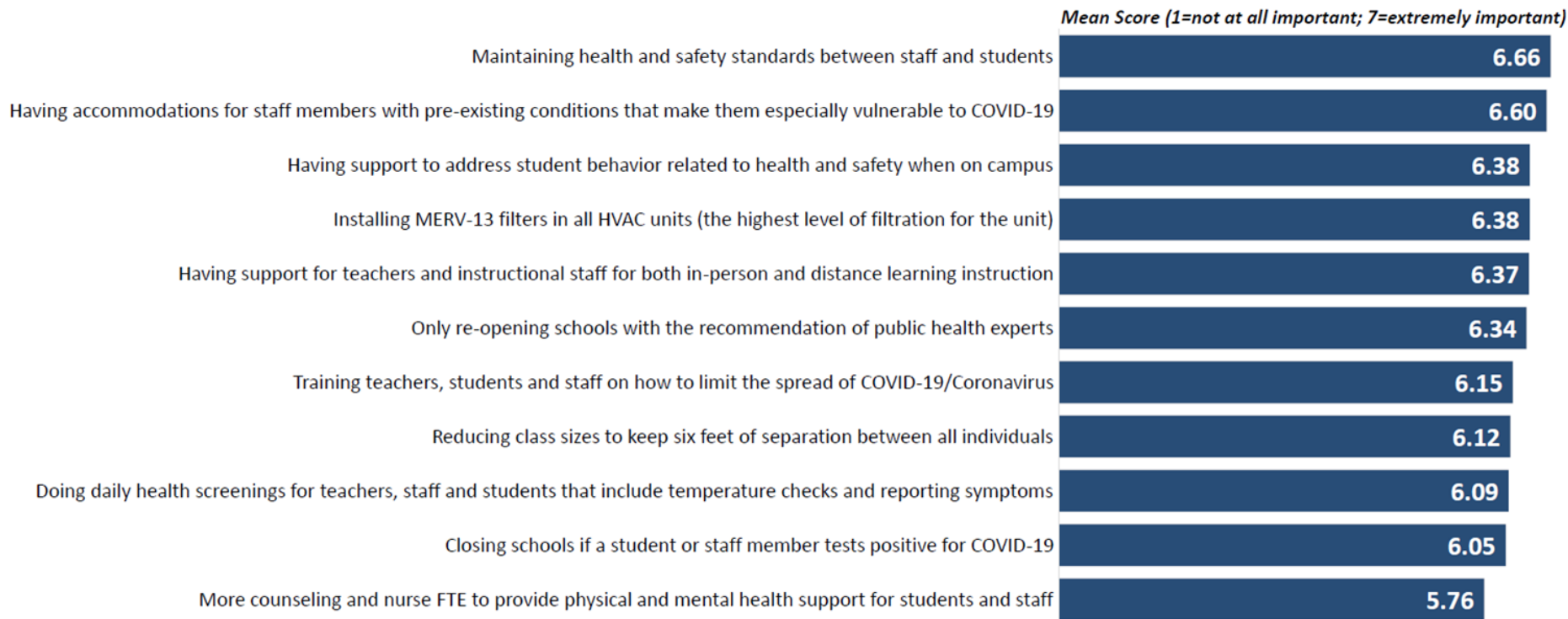
Three-quarters report being at least somewhat uncomfortable with students returning to campus for in-person instruction.

As you know, the outlook regarding the COVID-19 pandemic is difficult to predict and the options for school openings may continue to change. Nevertheless, based on how you feel today, what is your level of comfort with students returning to campus for in-person instruction?



Factors for Re-Opening

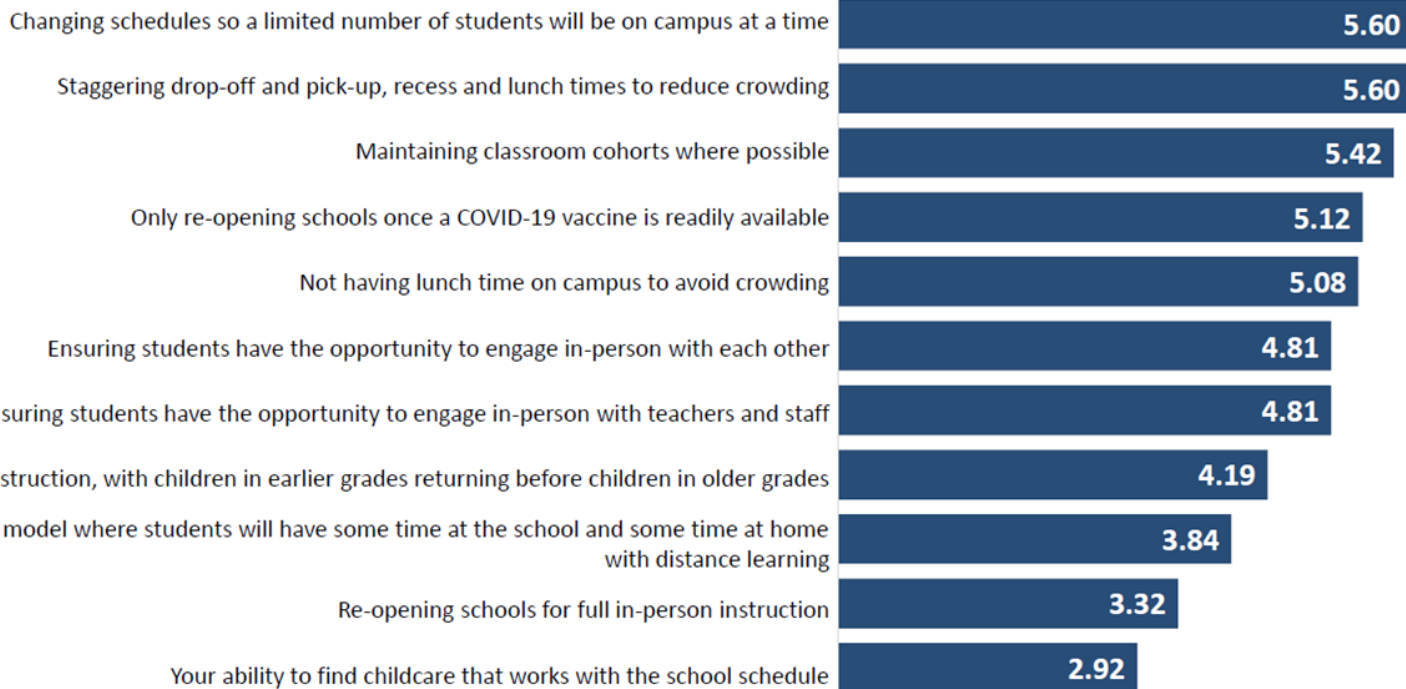
General safety precautions and supportive services are particularly important to many respondents.



Factors for Re-Opening

Other factors are also important to many.

Mean Score (1=not at all important; 7=extremely important)



Q13-Q34. Thinking more about the school opening models being considered, and keeping in mind that the details of what the school opening models might look like and the options for school openings may continue to change, how important is each of the following to you?

DJUSD Mission Statement

The mission of Davis Joint Unified School District, a leading center of educational innovation, is to ignite a love of learning and equip each student with the knowledge, skills, character, and well-being to thrive and contribute to an evolving and increasingly-connected world, through a system characterized by:

- Optimal conditions and environments for all students to learn
- A team of talented, resourceful, and caring staff
- Transforming teaching, learning, and operations in our continuing pursuit of excellence
- Resourceful, transparent, and responsible fiscal planning, and
- A diverse and inclusive culture

Guiding Principles

Equity



Access



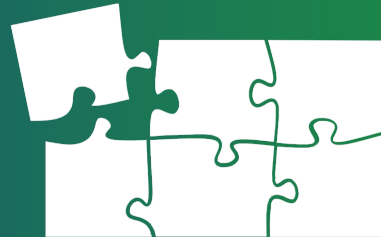
Innovation



Continuity



Compatibility



Efficacy



Conditions for a Return to Campus Discussion



Next Steps

- Continue discussion on conditions required to reopen schools at January 19, 2021 Special Board meeting
- Presentation of recommended elementary and secondary hybrid models at January 21, 2021 Regular Board meeting