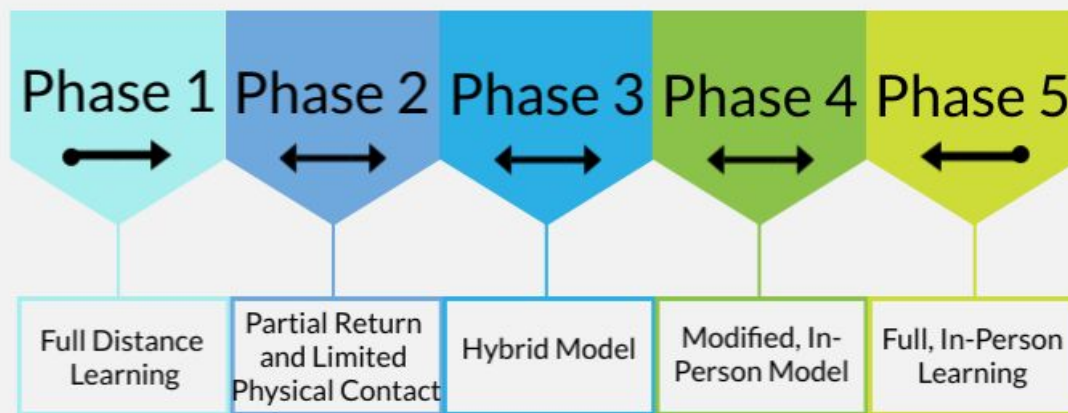




# Steps to Return to Campus

## January 19, 2021

# Phased Return to Campus Plan





Staff & Family Survey Data



Reopening Criteria and  
Stakeholder Engagement



Reopening Models and  
Stakeholder Engagement



Model Selection



Reopening Actions

# Roadmap to Phase 3

## Variables



Infection Rates



County/State/National  
Policies



Regional School District  
Developments



Staffing and Employee  
Agreements

# State Tiered Monitoring System

County risk level	New cases	positive tests
<b>WIDESPREAD</b> Many non-essential indoor business operations are closed	<b>More than 7</b> daily new cases (per 100k)	<b>More than 8%</b> positive tests
<b>SUBSTANTIAL</b> Some non-essential indoor business operations are closed	<b>4 - 7</b> daily new cases (per 100k)	<b>5 - 8%</b> positive tests
<b>MODERATE</b> Some indoor business operations are open with modifications	<b>1 - 3.9</b> daily new cases (per 100k)	<b>2 - 4.9%</b> positive tests
<b>MINIMAL</b> Most indoor business operations are open with modifications	<b>Less than 1</b> daily new cases (per 100k)	<b>Less than 2%</b> positive tests

# Health Indicators

## State Tiered Monitoring System - January 19



# Health Indicators

Based on Yolo County Data - January 17

Total Cases

**10,087**

196 Reported 1/17

Test Positivity Rate

**6.4%**

From 1/02-1/08

Daily Testing Positivity Rate



# DJUSD Infection Data

## Positive COVID-19 CASES (self-reported)

	Staff	Students
July-August	2	1
September	0	1
October	1	6
November	7	20
December	11	38
January	6	29

**Total Cases**

Student Cases  
**91**

Staff Cases  
**25**

**Active Cases**

Student Active Cases  
**11**

Staff Active Cases  
**2**

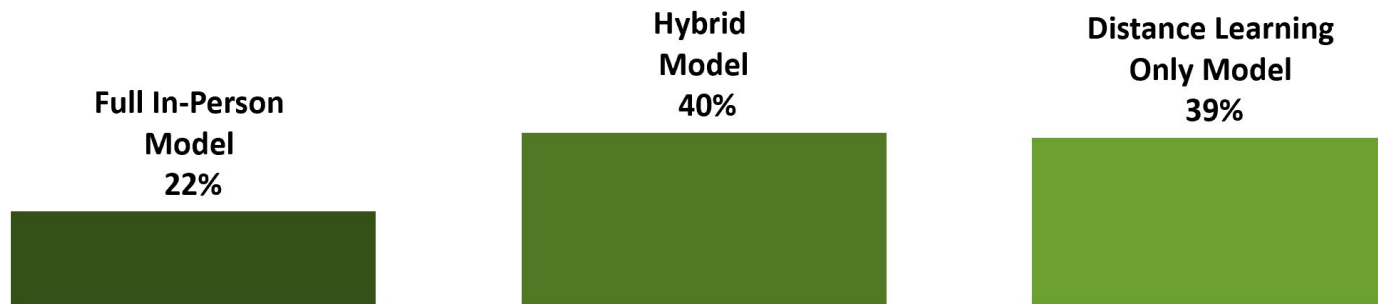
# Family Survey

## Preferred Model: Initial Ask



*Respondents are divided on their preference of learning model; however, more respondents prefer a hybrid or distance learning only model over a full in-person model.*

*As you know, the outlook regarding the COVID-19 pandemic is difficult to predict and the options for school openings may continue to change. Nevertheless, DJUSD would like your opinion on the following. Based on how you feel today, which of the following models would you choose for your child/children?*

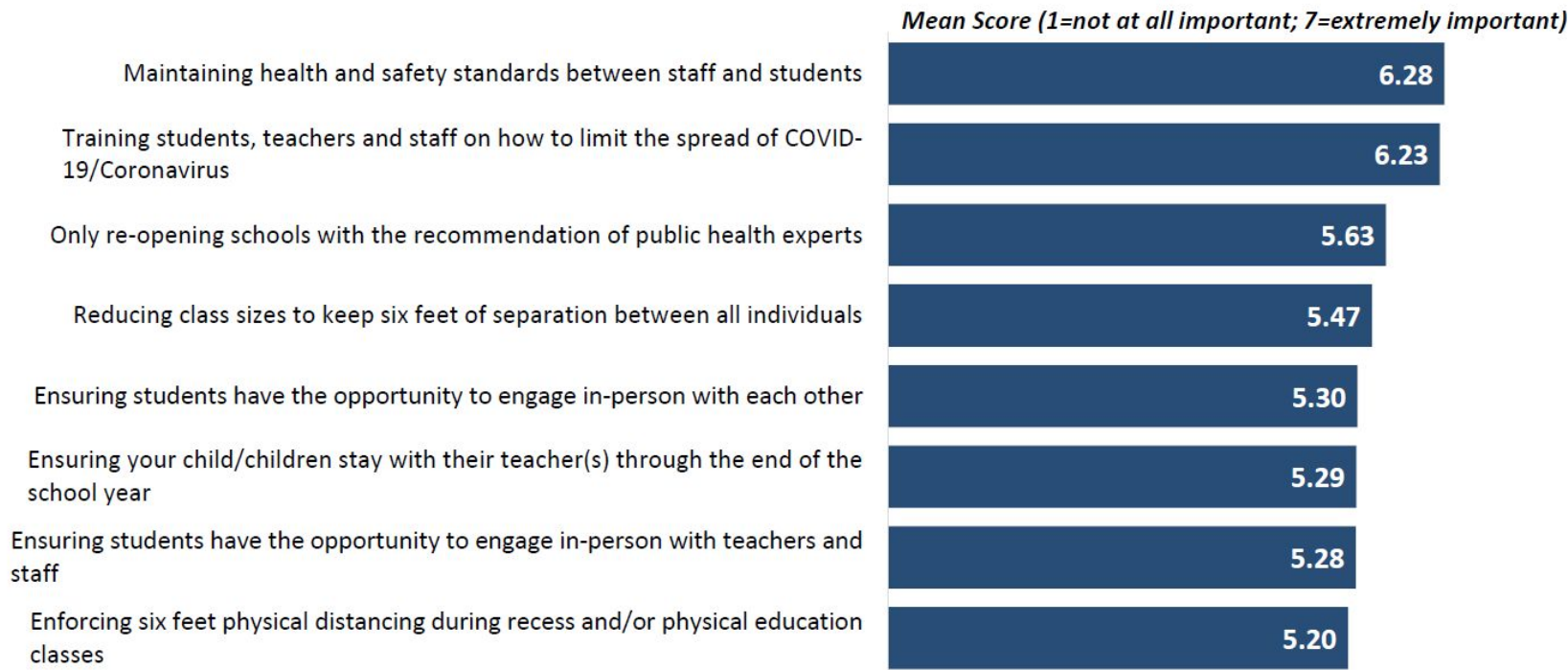


Q22. Based on how you feel today , which of the following models would you choose for your [child/children]? [IF UNDECIDED:] You didn't indicate which model you prefer. Which model do you lean towards? *Note: Leans percentages are minimal, total percentages are shown*



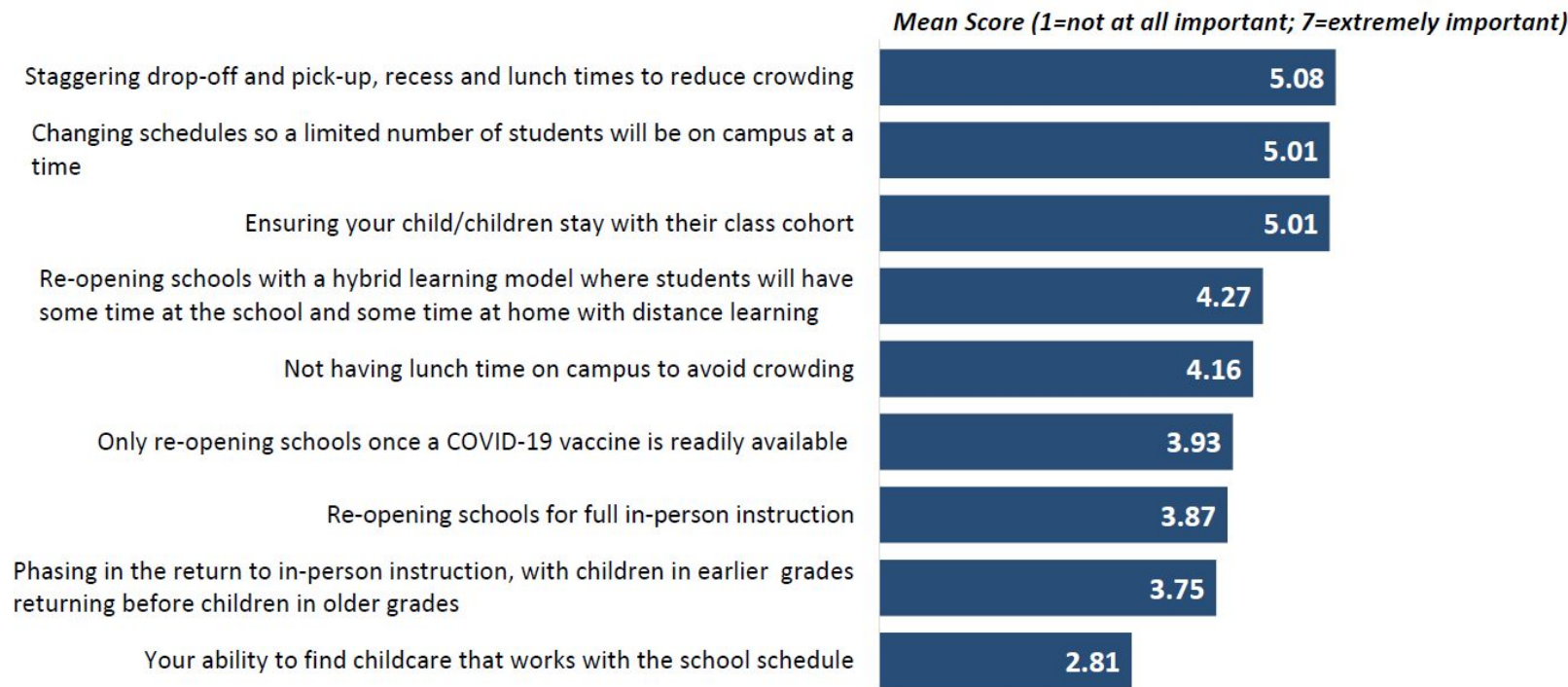
# Factors for Re-Opening

*General safety precautions are important to many.*



# Factors for Re-Opening

*Other factors are also important to many; however, ability to find childcare falls to the bottom of the list.*

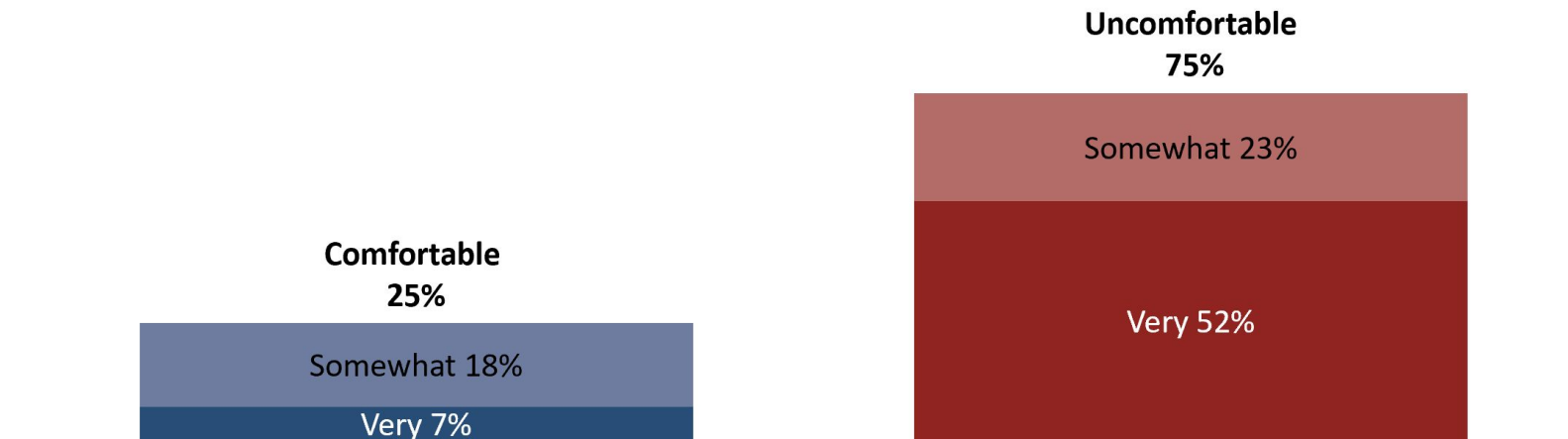


## Comfort with Students Returning: Initial Ask



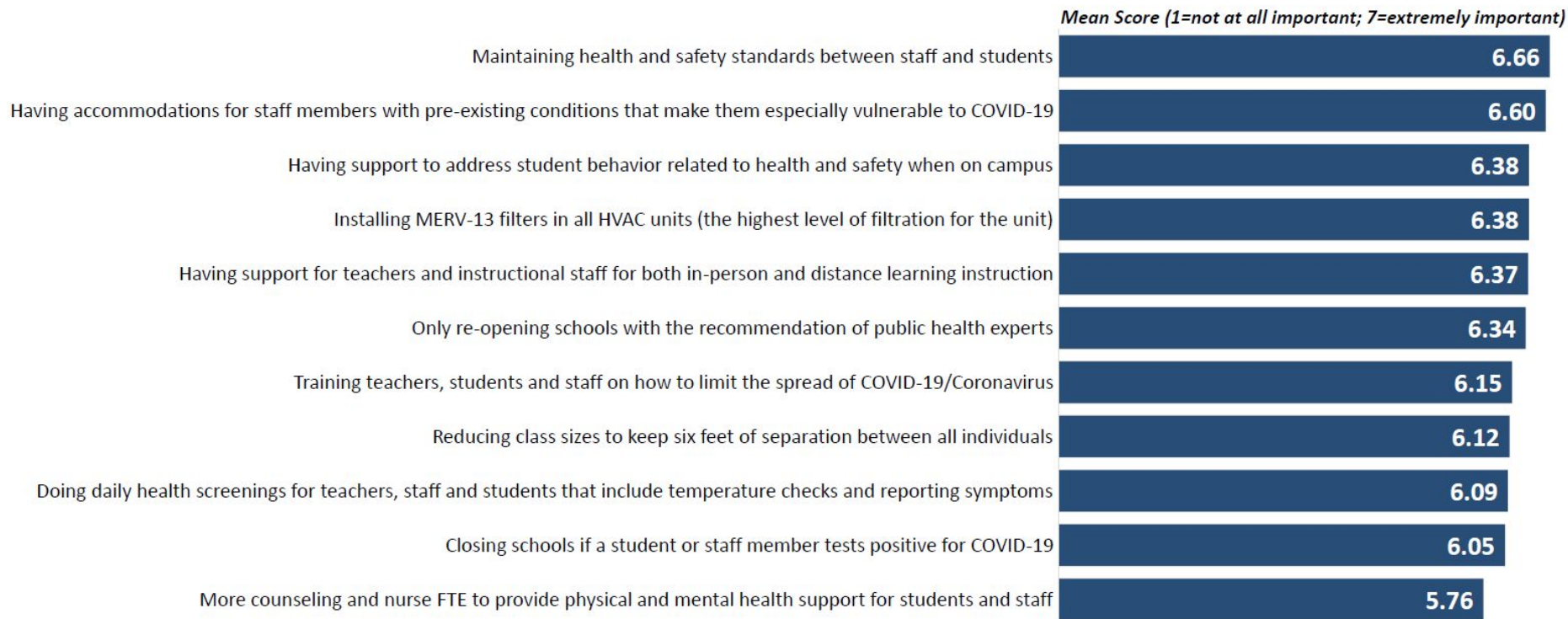
*Three-quarters report being at least somewhat uncomfortable with students returning to campus for in-person instruction.*

*As you know, the outlook regarding the COVID-19 pandemic is difficult to predict and the options for school openings may continue to change. Nevertheless, based on how you feel today, what is your level of comfort with students returning to campus for in-person instruction?*



# Factors for Re-Opening

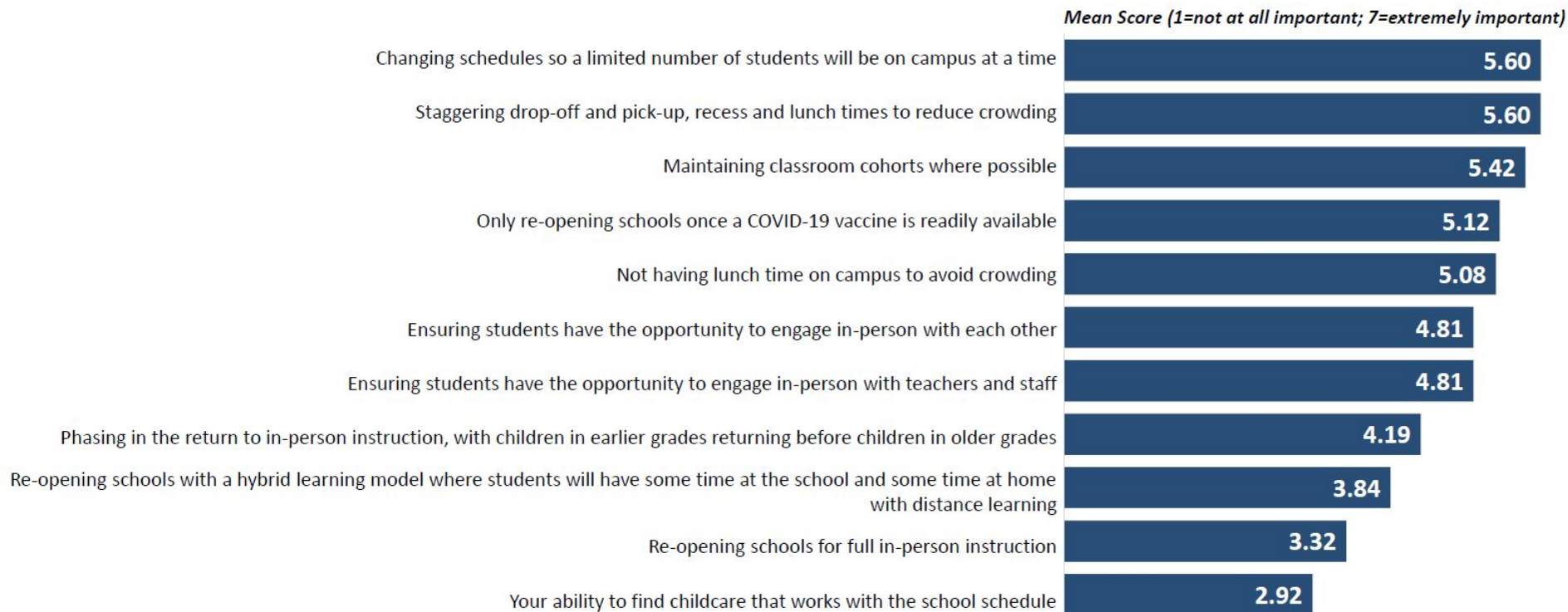
*General safety precautions and supportive services are particularly important to many respondents.*





# Factors for Re-Opening

*Other factors are also important to many.*



Q13-Q34. Thinking more about the school opening models being considered, and keeping in mind that the details of what the school opening models might look like and the options for school openings may continue to change, how important is each of the following to you?

# DJUSD Mission Statement

The mission of Davis Joint Unified School District, a leading center of educational innovation, is to ignite a love of learning and equip each student with the knowledge, skills, character, and well-being to thrive and contribute to an evolving and increasingly-connected world, through a system characterized by:

- Optimal conditions and environments for all students to learn
- A team of talented, resourceful, and caring staff
- Transforming teaching, learning, and operations in our continuing pursuit of excellence
- Resourceful, transparent, and responsible fiscal planning, and
- A diverse and inclusive culture

# Guiding Principles

Equity



Access



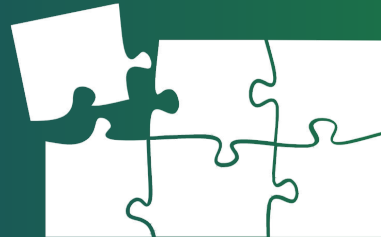
Innovation



Continuity



Compatibility



Efficacy



# Next Steps

- Presentation of recommended elementary and secondary hybrid models at January 21, 2021 Regular Board meeting



# Conditions for a Return to Campus Discussion

