



Excellence • Equity • Engagement • Enrichment

McKinney-Vento Homeless Outreach Program for Education (HOPE)

Presented by :

Dr. Phillip Shelley - Director of Student Services

Melody Royal - McKinney Vento Counselor

Definition of Homeless - McKinney-Vento Act

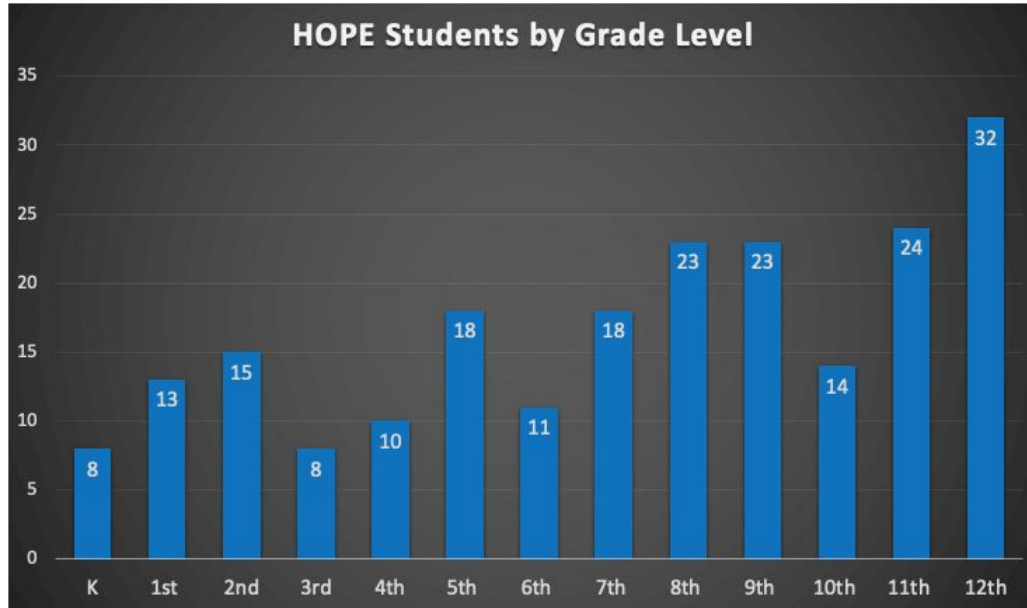
- Individuals who **lack a fixed (permanent), regular (used on a predictable routine, consistent), and adequate (sufficient for meeting the physical and psychological needs) night time residence**
- Sharing of housing (*due to economic hardship, natural disaster*)
- Substandard housing
- Motels, hotels, shelters and trailer parks inadequate for residency
- Public or private places not designated for sleeping, e.g., cars, parks and abandoned buildings
- Migratory children who are living in the above circumstance
- Unaccompanied youth in the above circumstance

McKinney-Vento provides...

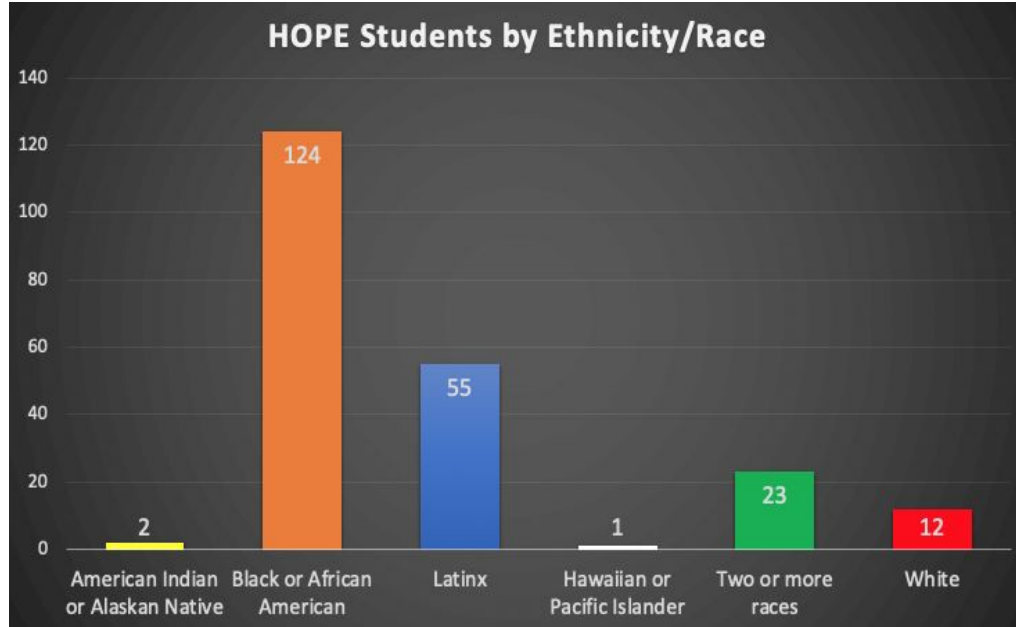
- Immediate enrollment
- Full participation in all school activities & programs for which they are eligible
- Continued attendance at the school of origin
- Automatically qualifies for child nutrition programs
- Removal of barriers that affect a student's ability to attend and participate in school
- Priority enrollment in preschool programs where federal funding is accepted

HOPE (McKinney-Vento) Students by Grade Level

217 McKinney-Vento eligible students have been identified in 2020-21



HOPE (McKinney-Vento) Students Demographics

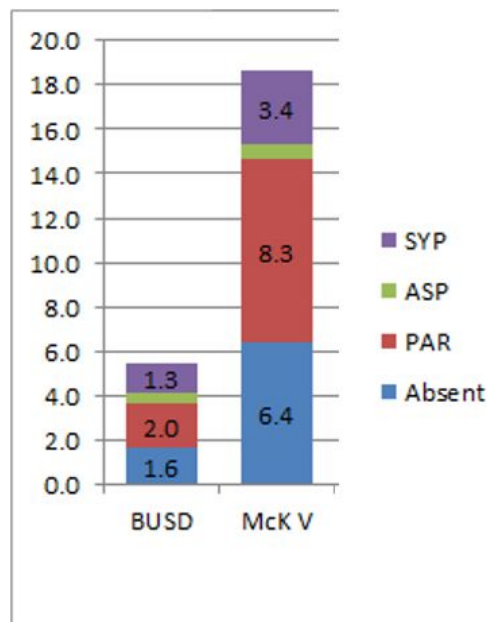


217 Students enrolled in HOPE

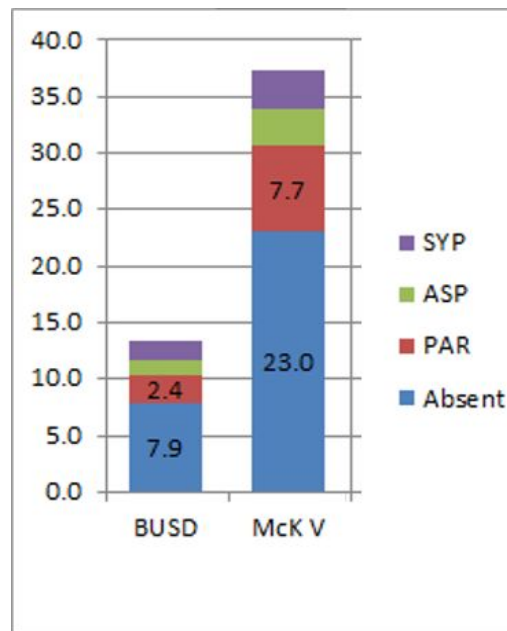
- 16 students are English Language Learners
- 80 students are receiving Special Education services (IEP)

Attendance Data (9/21/20 - 12/18/20)

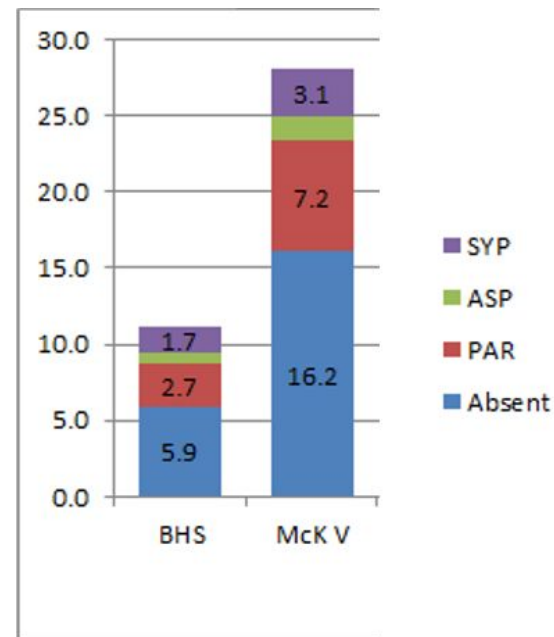
Elementary Avg. Per Student



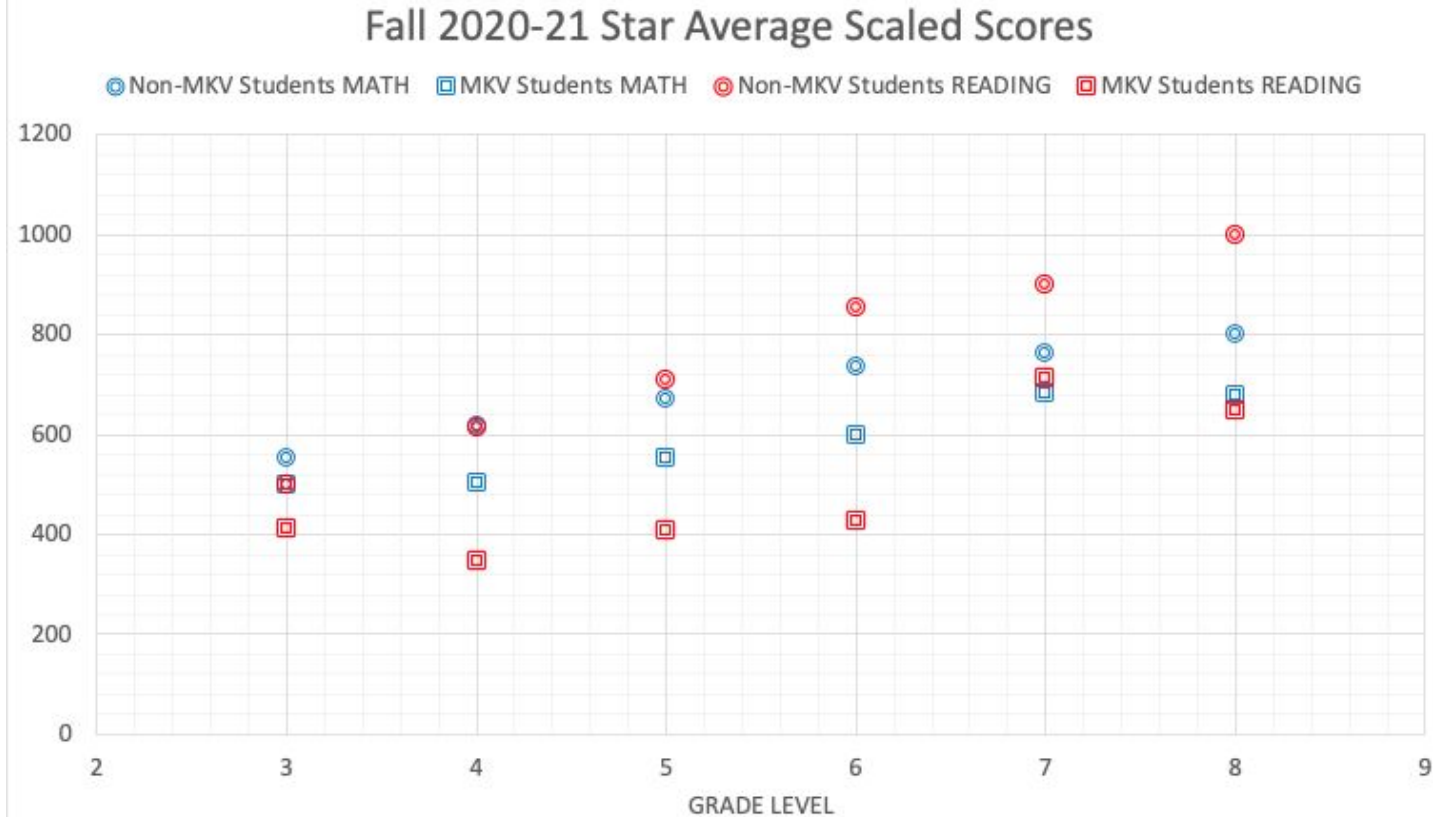
MS Period Avg. Per Student



HS Period Avg. Per Student

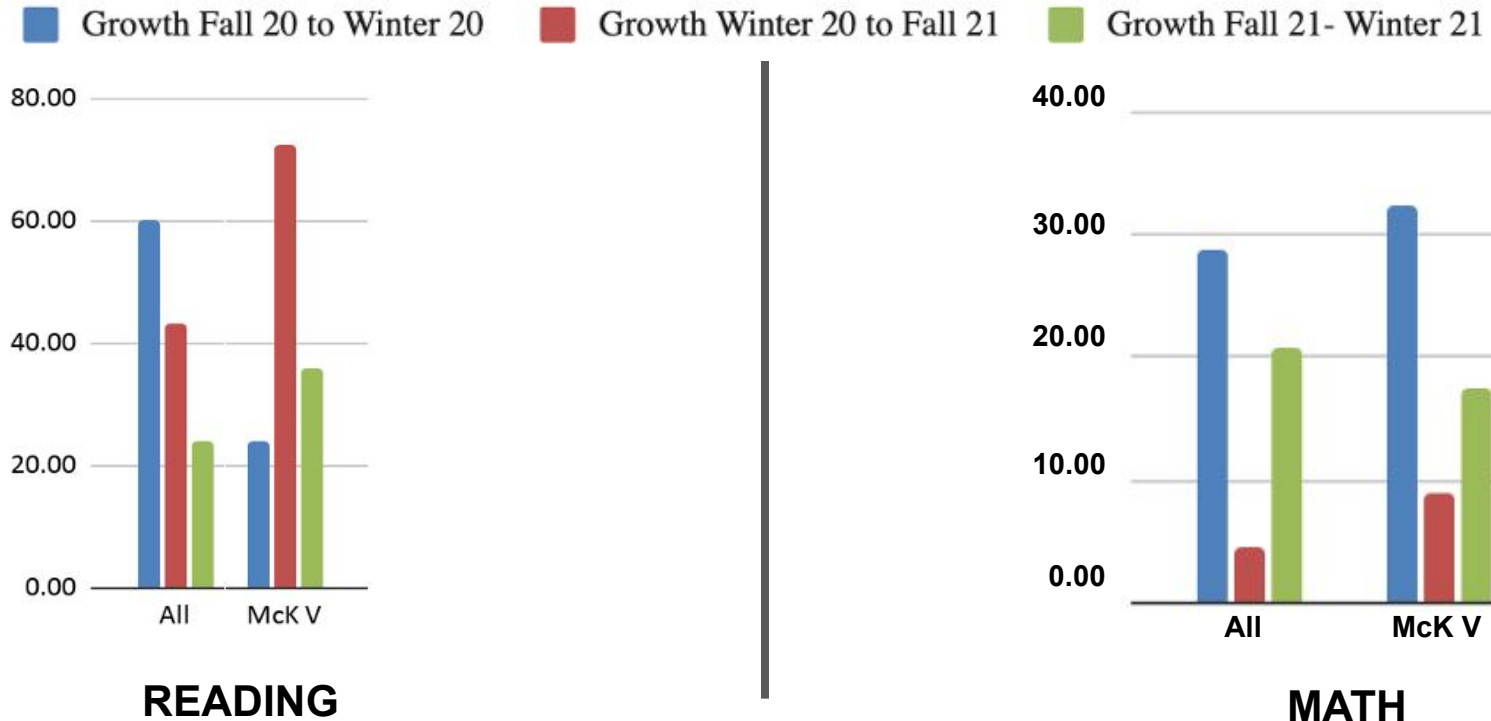


STAR Academic Data - (Grades 3 - 8)

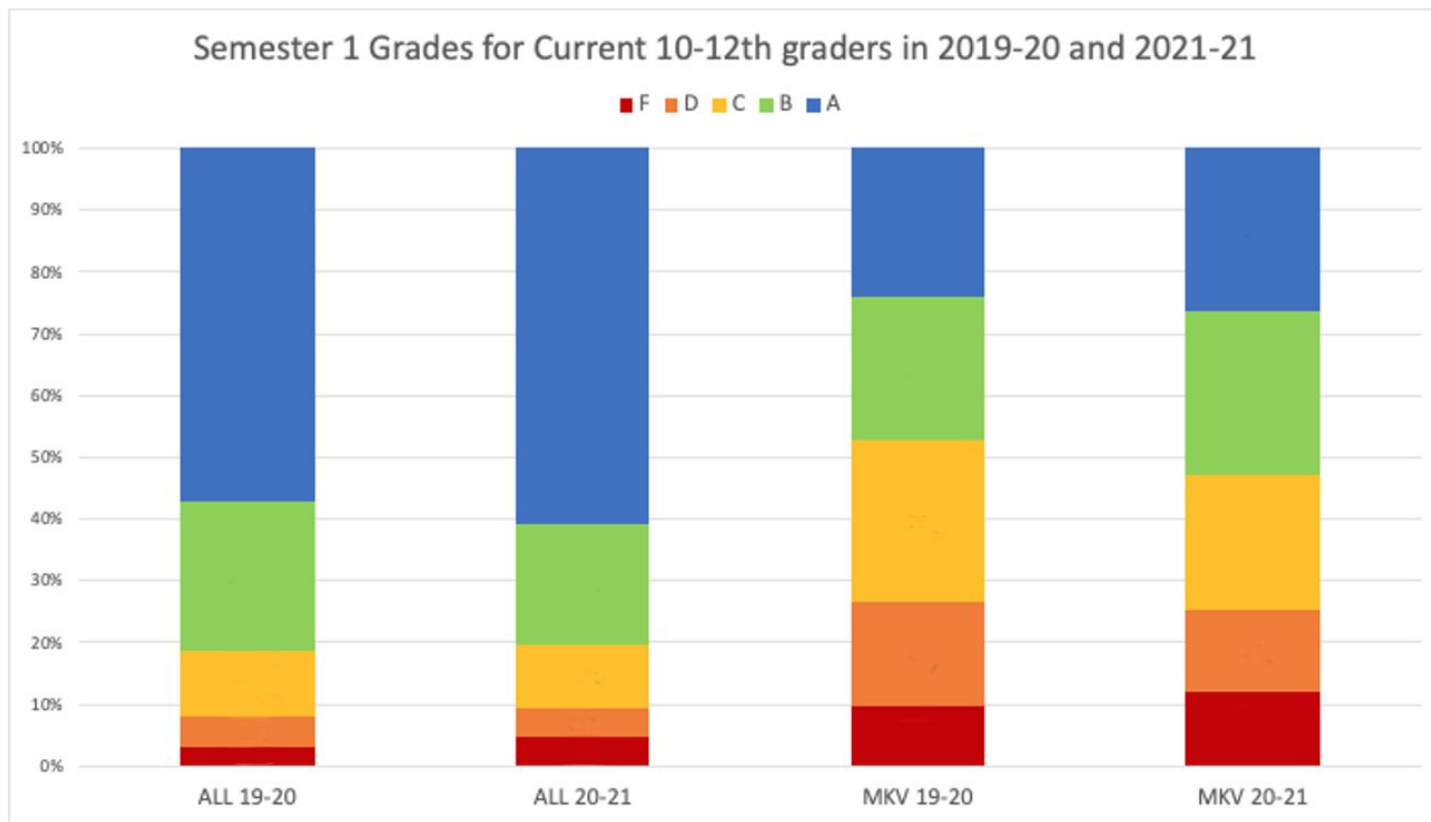


STAR Growth Data - Middle School

Average Scale Score Growth - STAR



Grade Distribution (A - F) - Berkeley High



Contacts and Concerns

Approximately 800 contacts by HOPE Counselor

Concerns include:

- Housing insecurity
- Technology
- Academic supports for their student
- Mental health of their student

5 families have found stable housing.

86% of the HOPE students have received a chromebook and/or Hotspot

35% of the HOPE students have been referred to Continuum of Support (COS) Teams

18% of the HOPE students have been referred or are currently receiving Mental Health Support

Support Services Provided by HOPE Counselor

- Assist with enrollment process
- Counseling support for student and family
- Crisis intervention
- Coordinating access to Community Resources
- Emergency Food Referrals
- Emergency Housing Referrals
- Provision of school supplies and backpacks
- Emergency Clothing
- Provide transportation support
- Family support
- Mental health and addiction referrals
- Connect families with onsite school support
- Coordinate support with BHS COS Team

Work with Community Partners

- HOPE Community Collaboration
- Local food banks and pantries
- Berkeley Mental Health
- Berkeley Community Resources
- Willard Shower Program
- Women's Daytime Drop-in Center
- Youth Engagement Advocacy Housing (YEAH!)
- Berkeley Youth Alternatives
- Kerry's Kids / Children's Hospital Oakland
- East Bay Community Law
- Dreamcatcher Youth Service
- Love A Child Homeless Shelter
- Family Front Door Shelter
- Lifelong Medical Care

Continued Work...

- Identify HOPE eligible students
- Provide support services for HOPE students and families
- Build on the collaboration between the school district and community partners to remove barriers.
- Put systems in place to increase the Student Services department's efficiency and effectiveness
- Full integration into Infinite Campus (SIS)