



2021–2022 Educational Plan Development Process

Ensuring the health and safety of students, families, and staff
while providing high-quality educational services to all students

High Quality – Equitable – Safe – Responsive

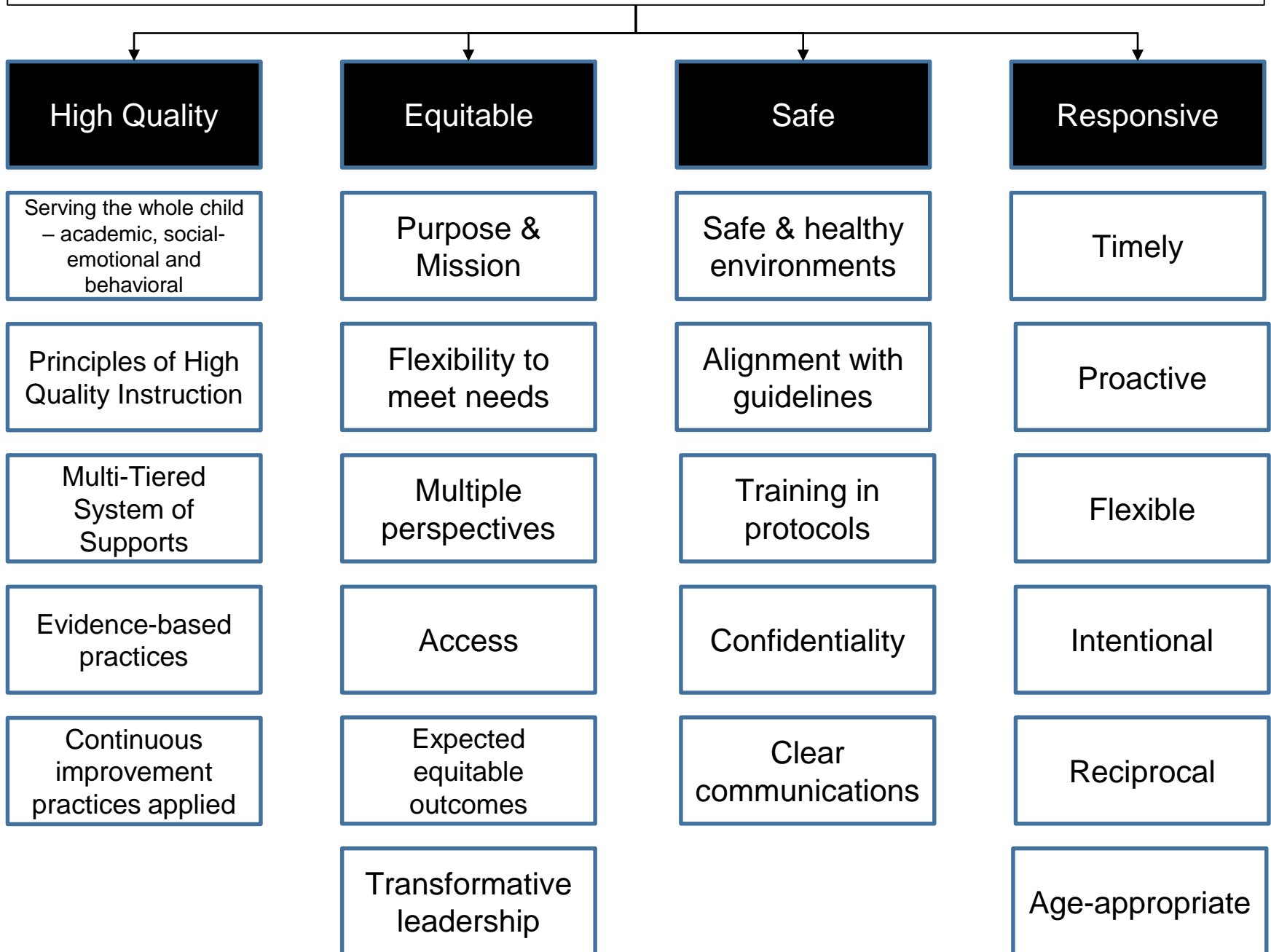
The purpose of the presentation

- This presentation depicts the structure and processes originally used to successfully transition to full Distance Learning and develop the In-Person Concurrent Model. This includes methodologies used to gather stakeholder feedback.
- This presentation also provides information on how we are adjusting our planning and budgeting processes for the 2021-2022 school year, particularly in the area of stakeholder engagement as a result of the changing health conditions and related Federal/State school reopening guidelines.

Presentation

1. Planning Foundations
2. Planning Assumptions
3. Stakeholder Feedback
4. Planning Process and Team Structure
5. Timeline

Elk Grove Unified School District – Planning Foundations



Planning Assumptions

- We will adhere to CDC State and Local social distancing and health safety guidelines
- Students will be provided high-quality instruction which may include distance learning, in-person instruction, or a combination of both
- We will use current research to guide planning and decision making
- We will apply lessons learned and stakeholder feedback to continuously improve educational services
- We have shifted from initial educational model design to adjusting based upon changing health conditions
- We are expanding stakeholder advisory to optimally align to the current planning conditions

Stakeholder Feedback to Date Informed Decision-Making

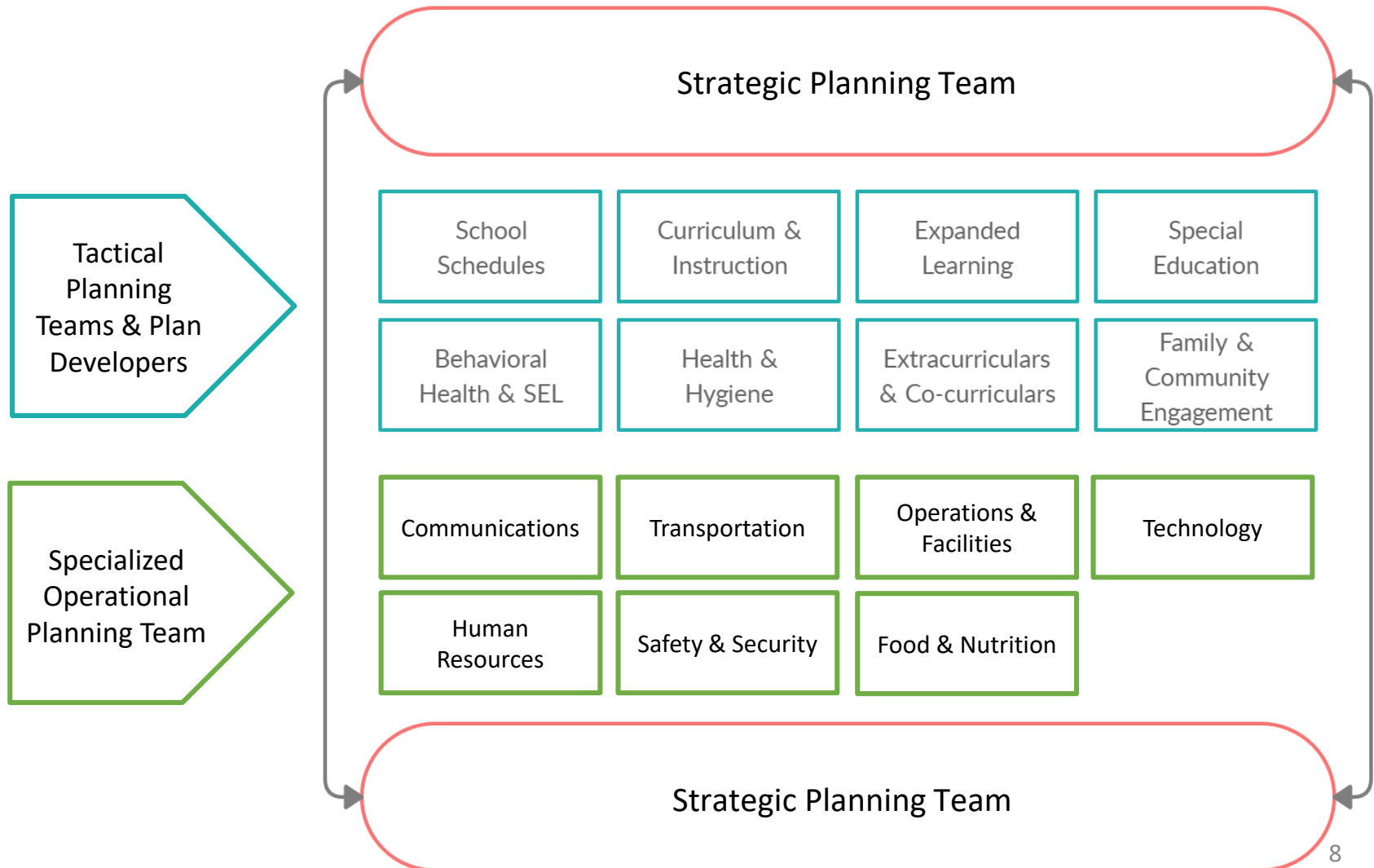
- Information obtained from thousands of students, parents, school administrators, teachers, and related service providers
- Information was obtained related to:
 - Instructional Experiences
 - Student Workload
 - Student Engagement (students and parents)
 - Satisfaction
 - Reopening Preferences and Priorities
 - Support Needs (teachers and admin)
 - Positive/Negative Experiences (open-ended)

Stakeholder Feedback Events to Date

- April 16, 2020 – Connectivity and Communication Survey to parents, students and staff
- May 17, 2020 – DL Reflection Survey to parents, student and staff
- June 19, 2020 – Parent Input and Preference Survey
- June-July 2020 – Preference and Intent to Return for EGEA, AFSCME, EGTEAMS, non-management employees
- August 3, 2020 – LCP Feedback Survey to families students, and district staff
- November 2020 – Parent Selection of Learning Model
- November 2020 – DL/LCP/LCAP Needs Survey to students parents, teachers, administrations and service providers
- February 17, 2021 – COVID Safety Plan Feedback to public
- February 2021 – Parent Selection of Learning Model
- February-March 2021 – EGUSD LCAP Needs Analysis Process

Elk Grove Unified School District's Strategic Planning Approach

Principled - Innovative - Collaborative - Strategic



Original and Adjusted Planning Process Comparison

2020-21 Planning Process

Strategic Planning Team: District and site administration and staff

Tactical Teams: District and site administration and staff

Specialized Operational Team: District and site administration and staff

2021-22 Planning Process

Educational Model Advisory Team: Expanded district and site administration, staff, parents and students

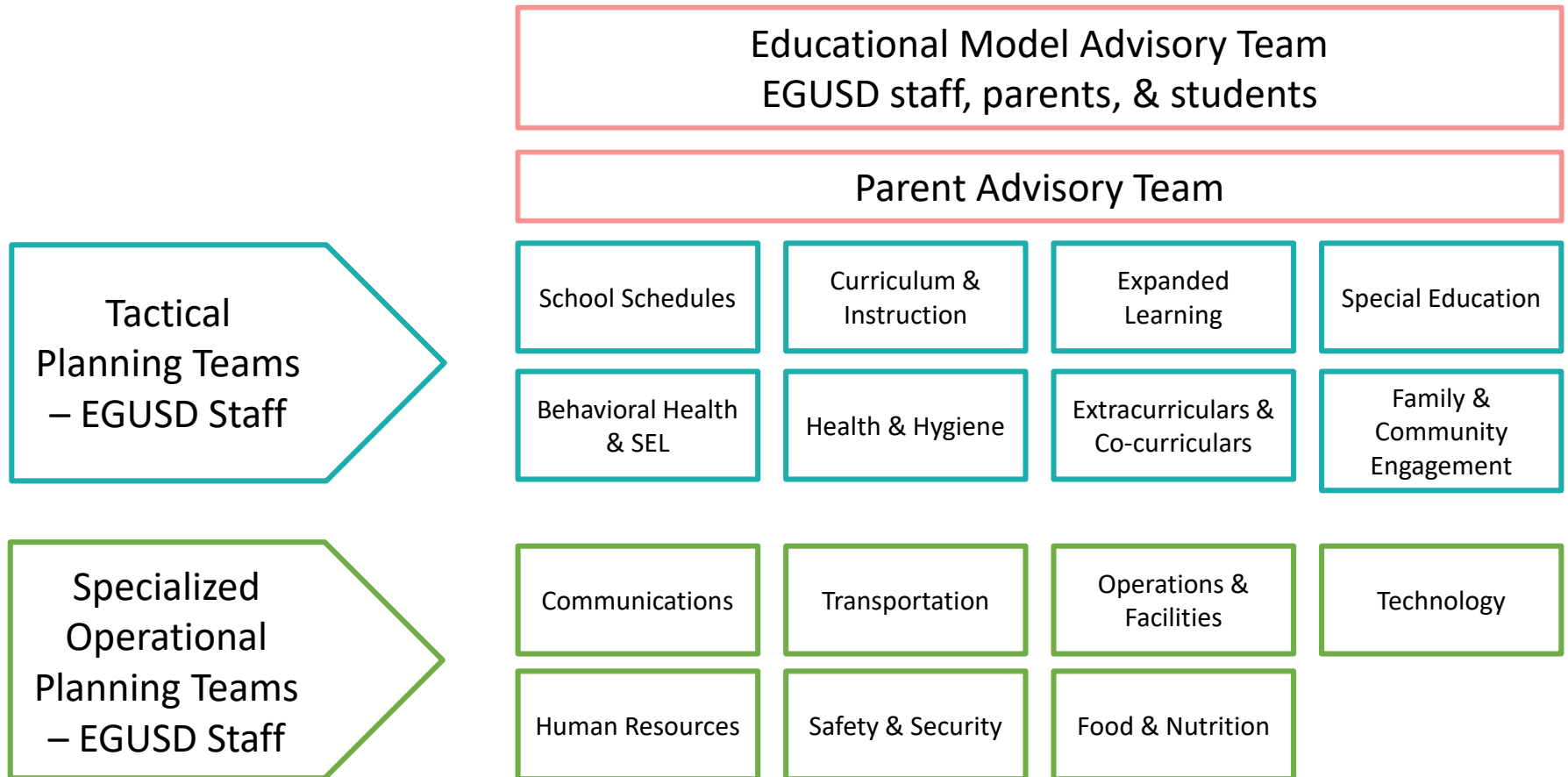
Tactical Teams: District and site administration and staff – team membership adjusts to changing problem solving conditions

Specialized Operational Team: District and site administration and staff – team membership adjusts to changing problem solving conditions

Parent Advisory Team: Representatives of the Superintendent's Parent Advisory, Community Advisory Committee (CAC – Special Education parent advisory), District English Learner Advisory Committee (DELAC), District Advisory Committee (DAC), Native American Parent Advisory, Improve Your Tomorrow (IYT) parents, Families of Black Students United (FBSU) parents, Board-appointed representatives

Stakeholder survey specific to the in-person concurrent model and recommendations for 2021-22 school year (students, staff, and parents)

2021-22 Planning Process



Timeline

- March 10 – April 1: Implementation of in-person concurrent model (IPCM)
- March 22 – April 2: LCAP Input for 2021-22 school year
- Week of March 29: EMAT and PAT meetings begin
- April 2-9 – Distance Learning Interest Survey for 2021-22
- April 23 – May 2: Learning Model Feedback Survey
- May – June 15: Examination of health conditions and accompanying school reopening guidelines
- June 15: Determine reopening model for 2021 (in time for year-round schools opening July 15)