

BERKELEY TECHNOLOGY ACADEMY

GROWING LEADERS PROJECT

2701 MLK JR. WAY, BERKELEY, CA 94703
BERKELEY UNIFIED SCHOOL DISTRICT



STUDENTS IN WILLARD'S
GROWING LEADERS
PROGRAM



PROPOSED BTECH LIBRARY
WITH ART ROOM IN THE
BACKGROUND

SCHEMATIC DESIGN -- APRIL 7, 2021

GROWING LEADERS PROJECT

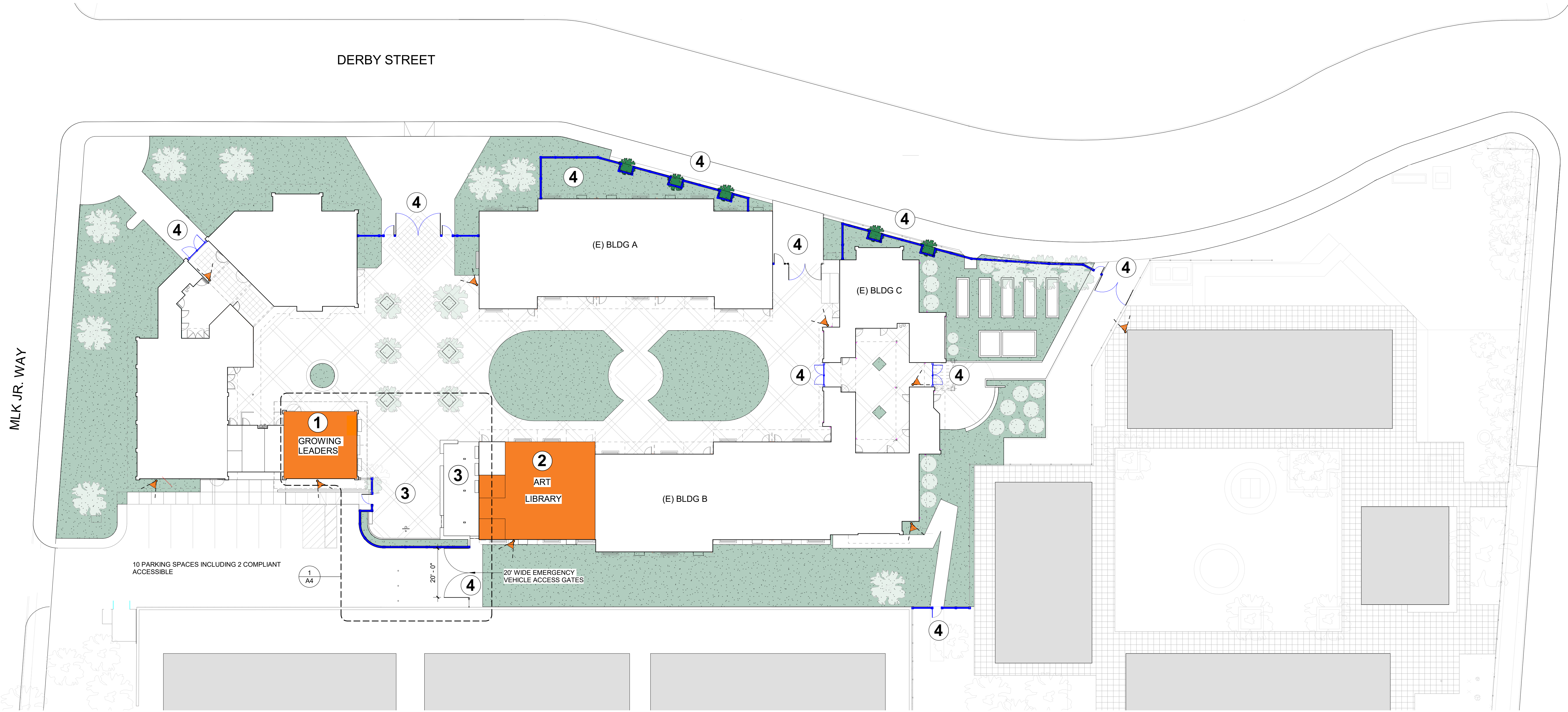
SCOPE OF WORK

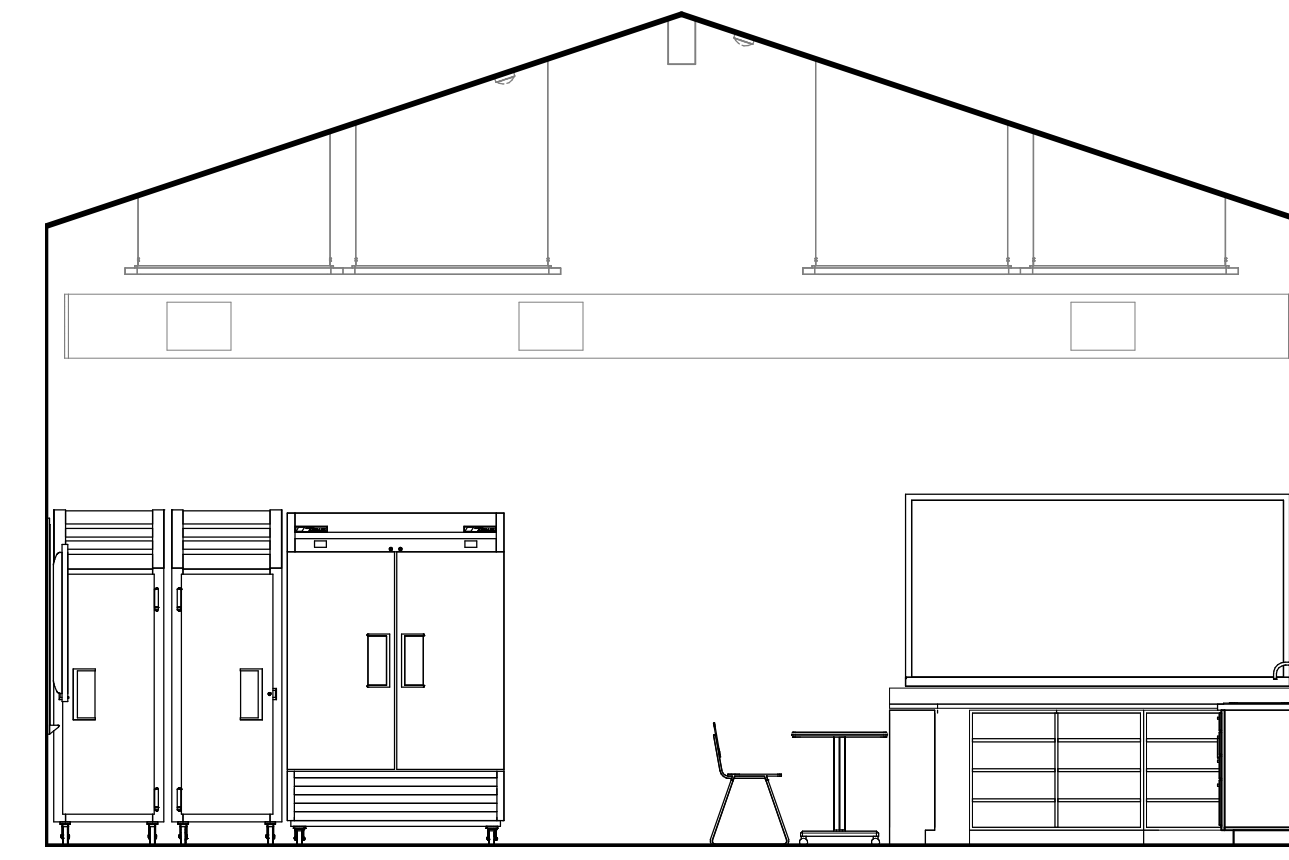
① GROWING LEADERS CLASSROOM

② ART ROOM/LIBRARY

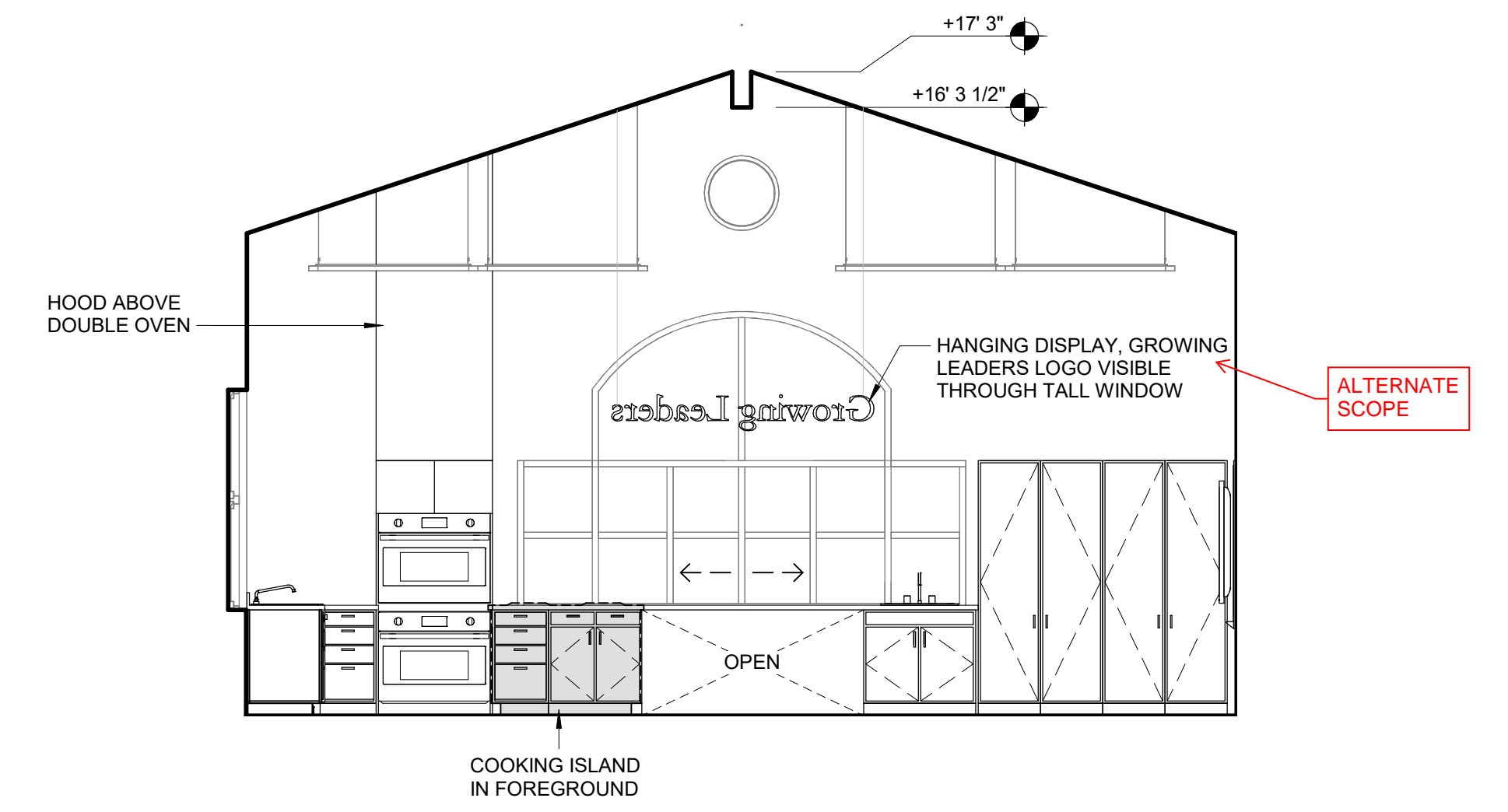
③ NEW PLAZA

④ SECURITY IMPROVEMENTS

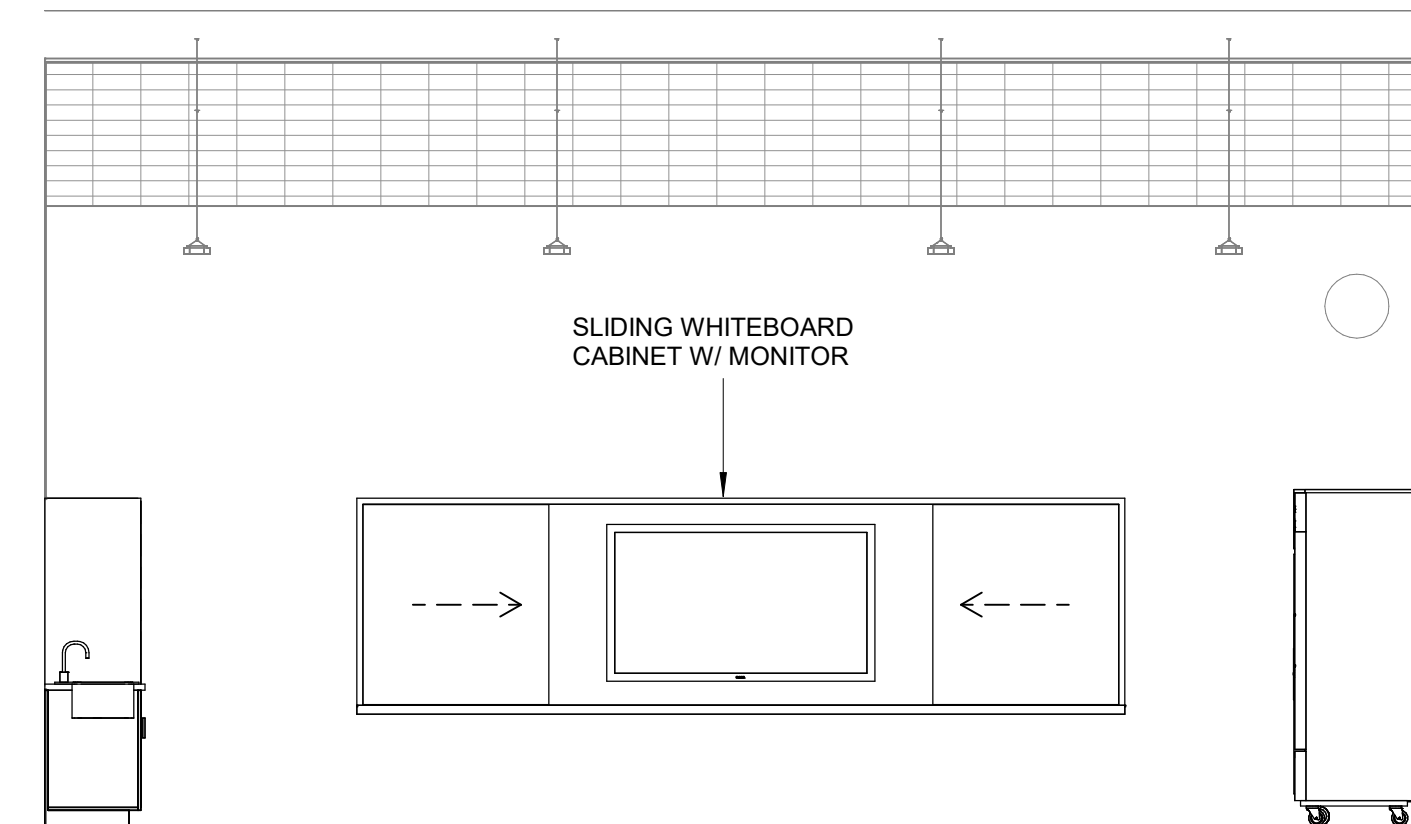




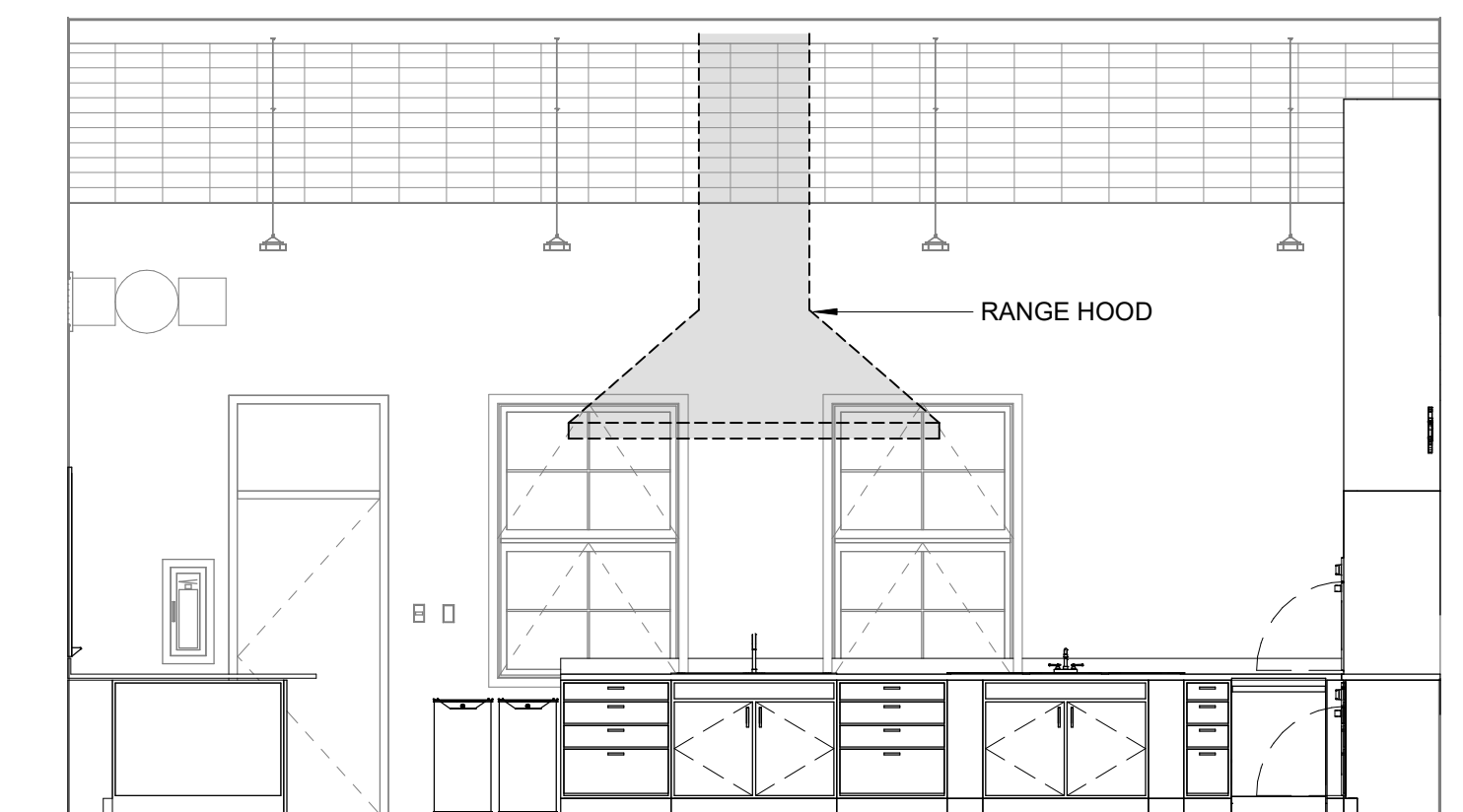
6 GROWING LEADERS CLASSROOM WEST
1/4" = 1'-0"



3 GROWING LEADERS CLASSROOM EAST
1/4" = 1'-0"

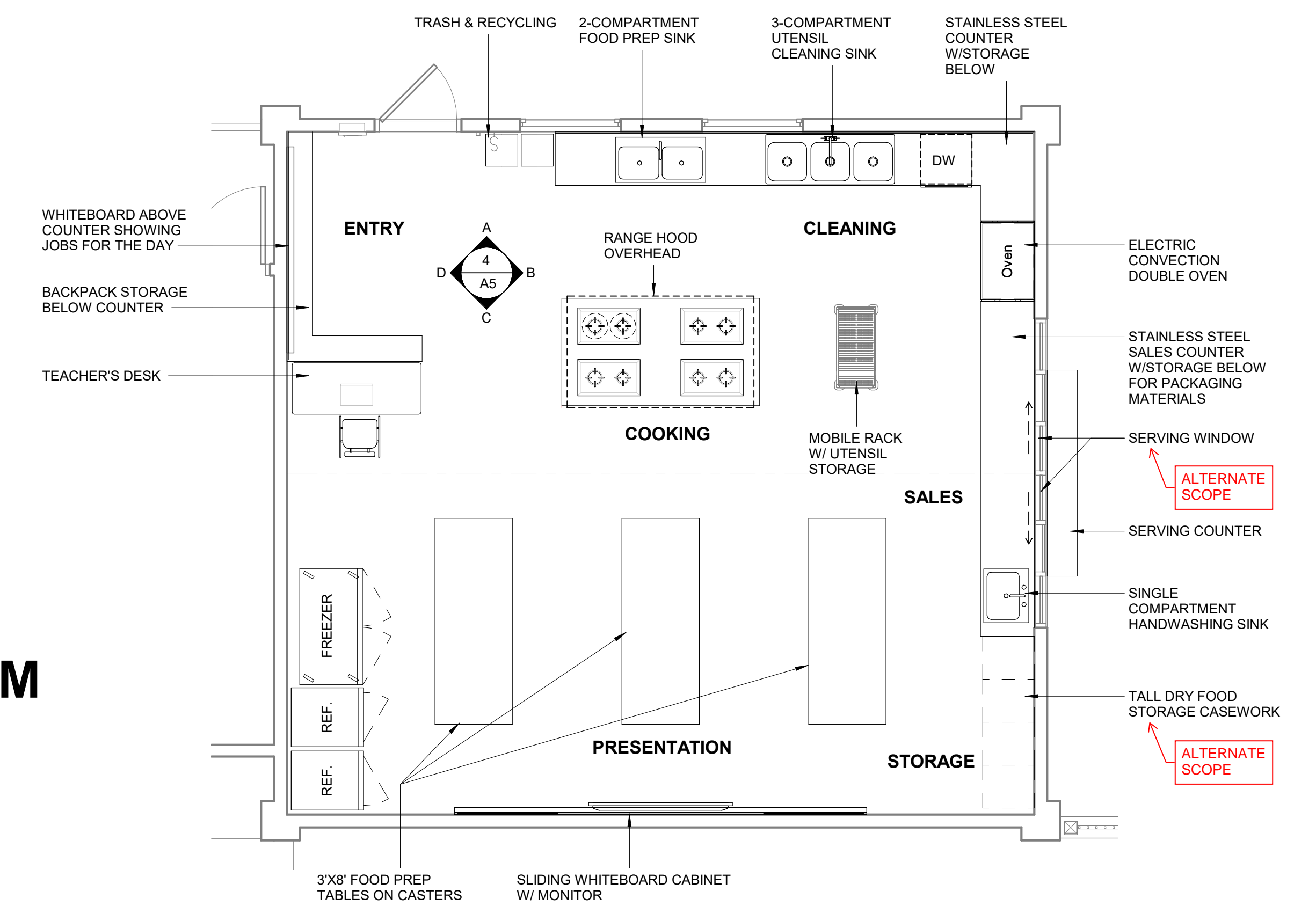


5 GROWING LEADERS CLASSROOM SOUTH
1/4" = 1'-0"

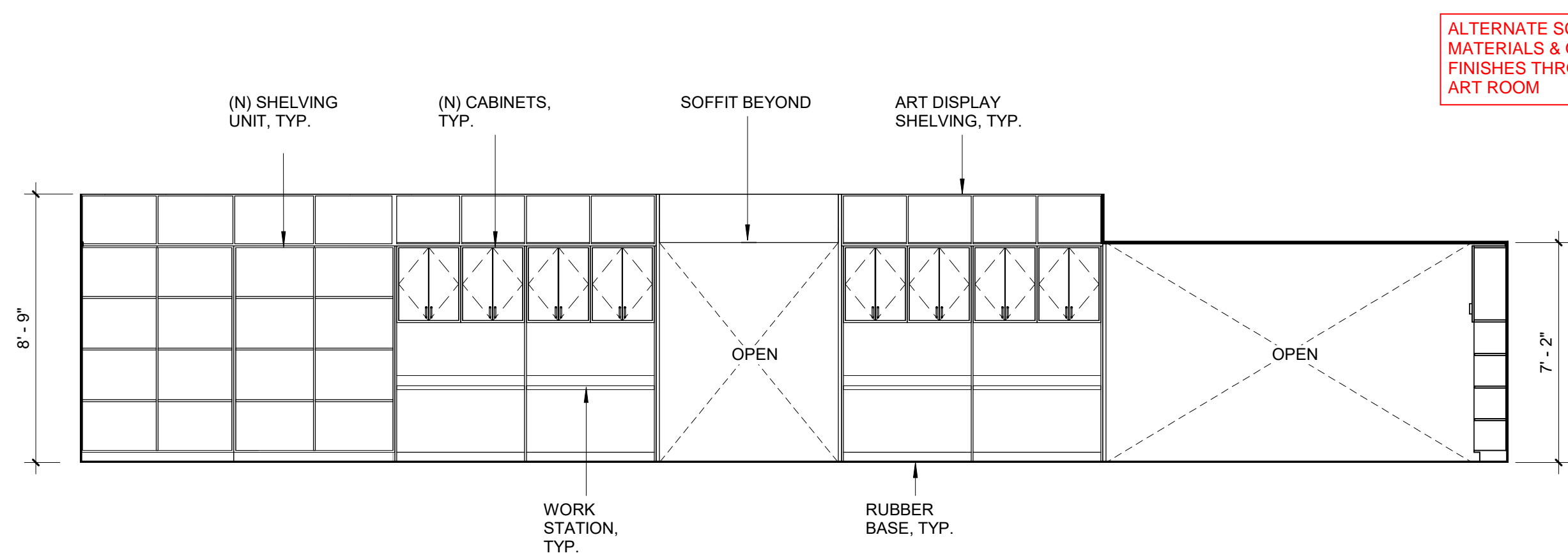


4 GROWING LEADERS CLASSROOM NORTH
1/4" = 1'-0"

CLASSROOM

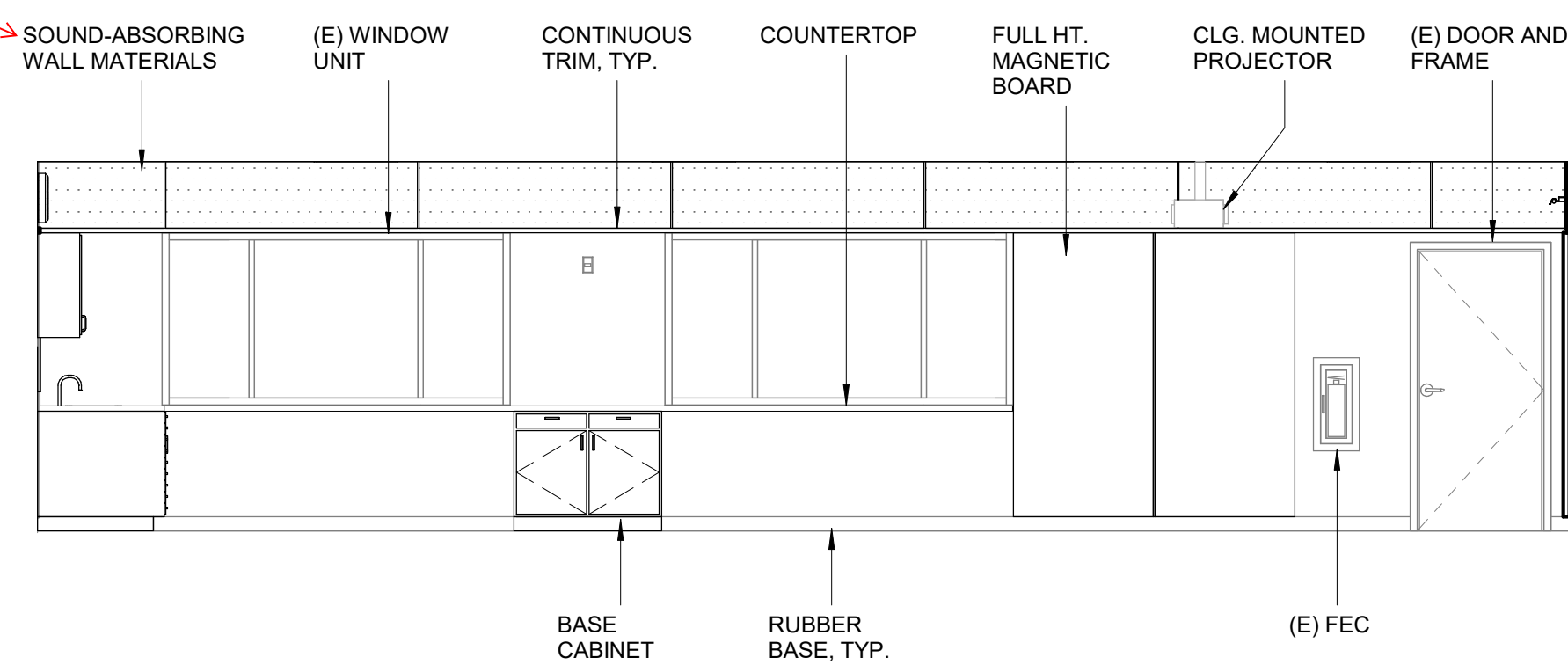


1 GROWING LEADERS CLASSROOM

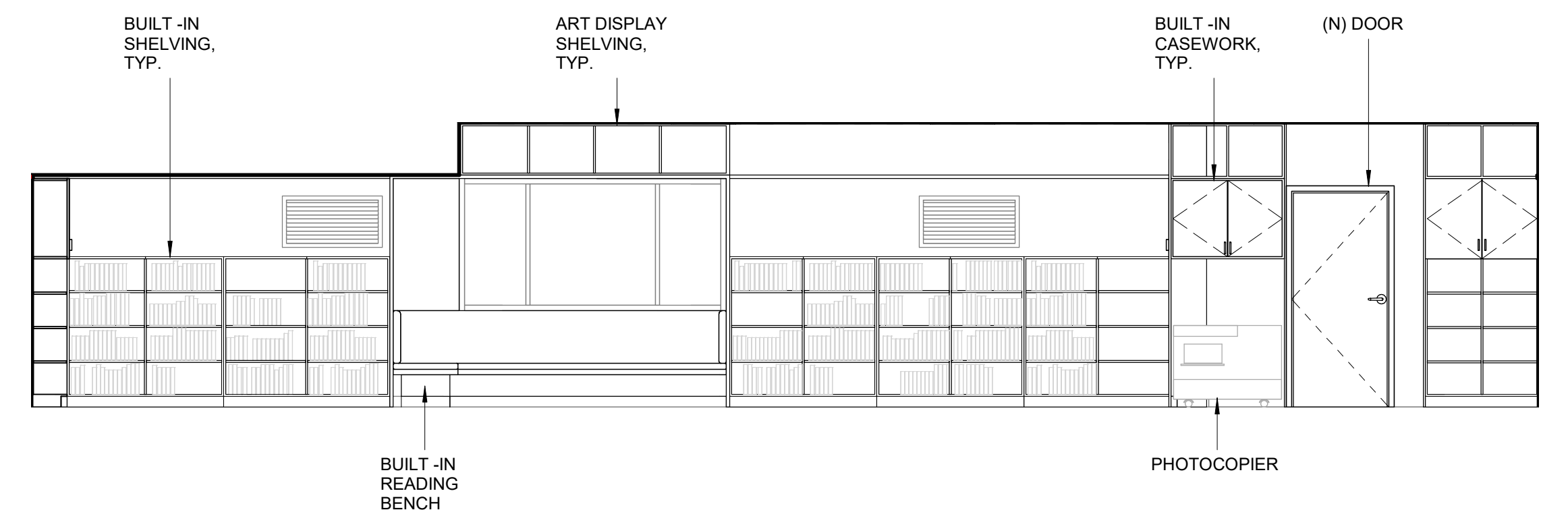


8 LIBRARY NORTH
1/4" = 1'-0"

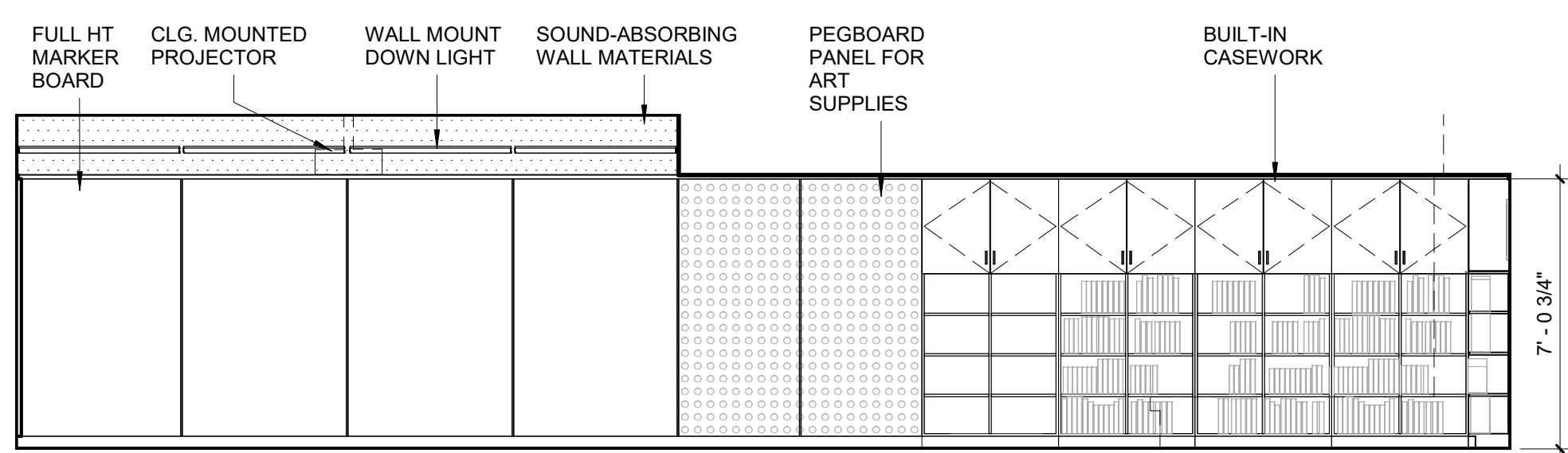
ALTERNATE SCOPE: WALL MATERIALS & OTHER FINISHES THROUGHOUT ART ROOM



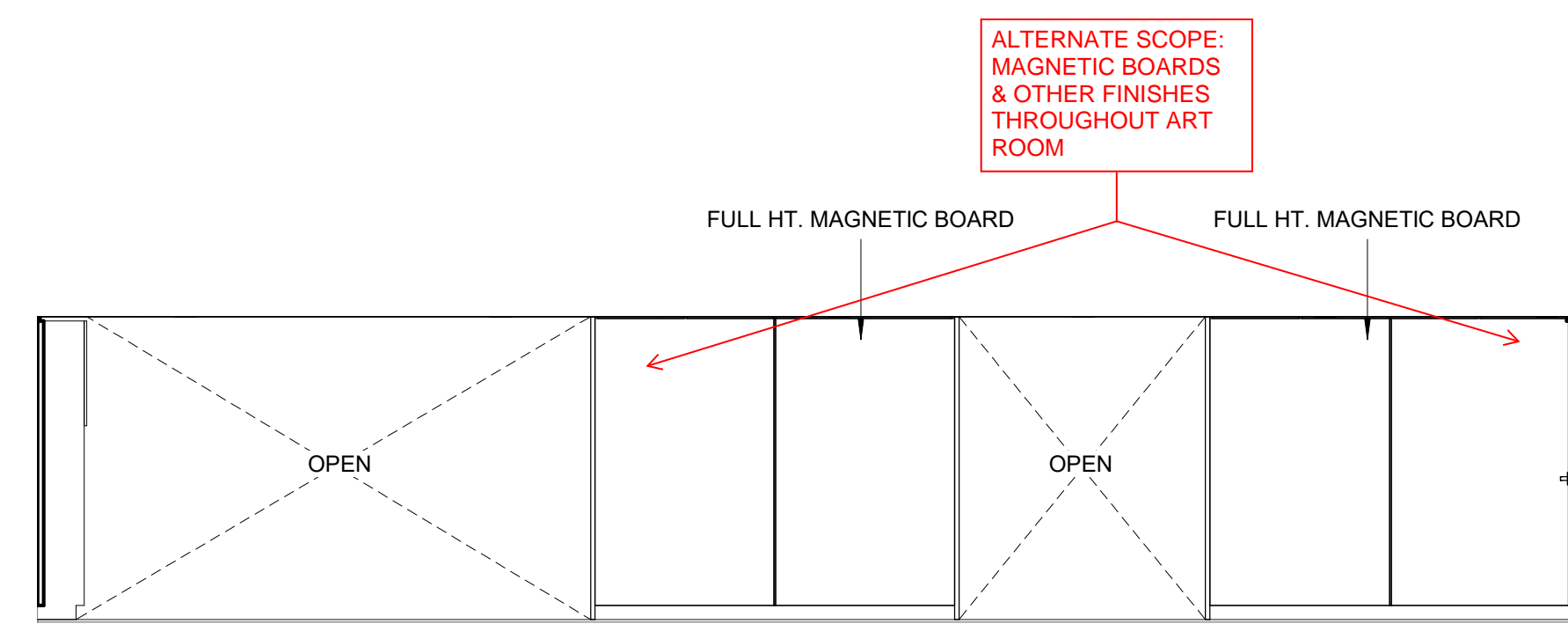
6 ART NORTH
1/4" = 1'-0"



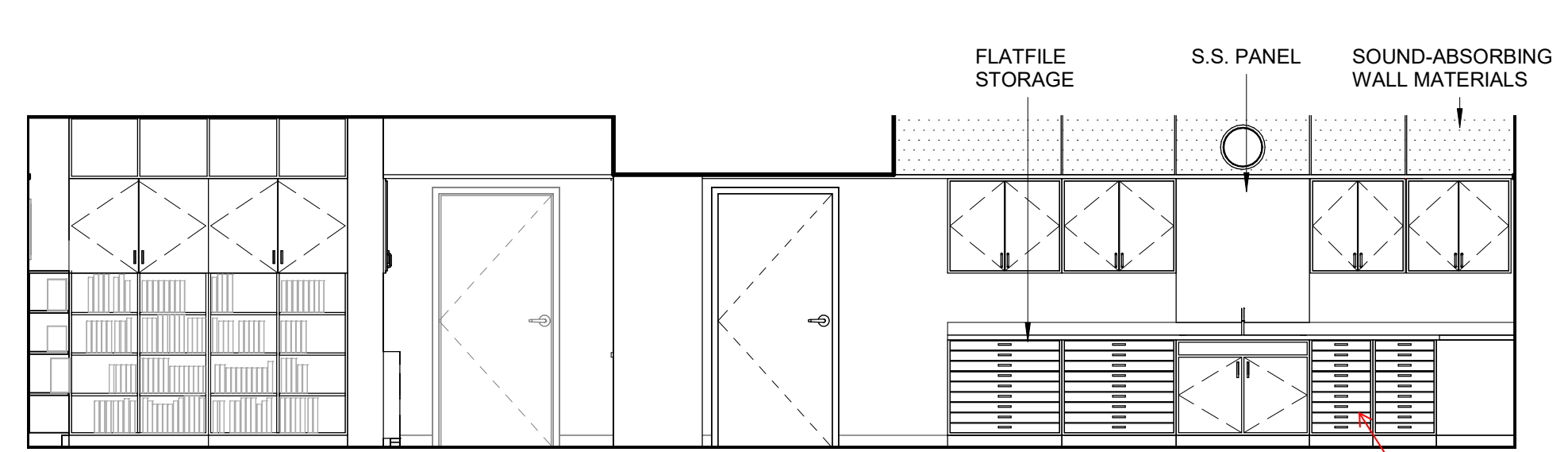
4 LIBRARY SOUTH
1/4" = 1'-0"



7 ART/LIBRARY EAST
1/4" = 1'-0"

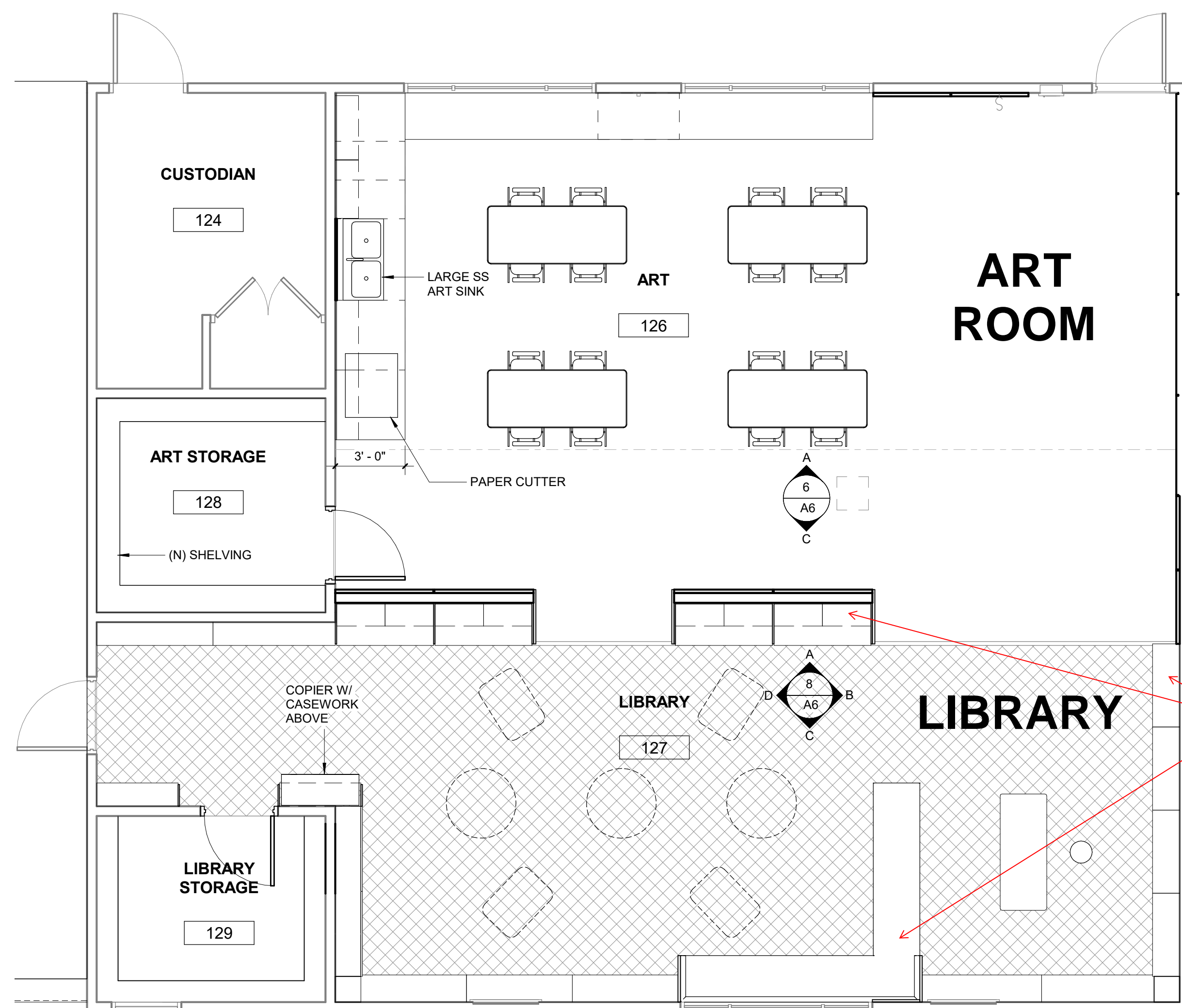


5 ART SOUTH
1/4" = 1'-0"



3 ART/LIBRARY WEST
1/4" = 1'-0"

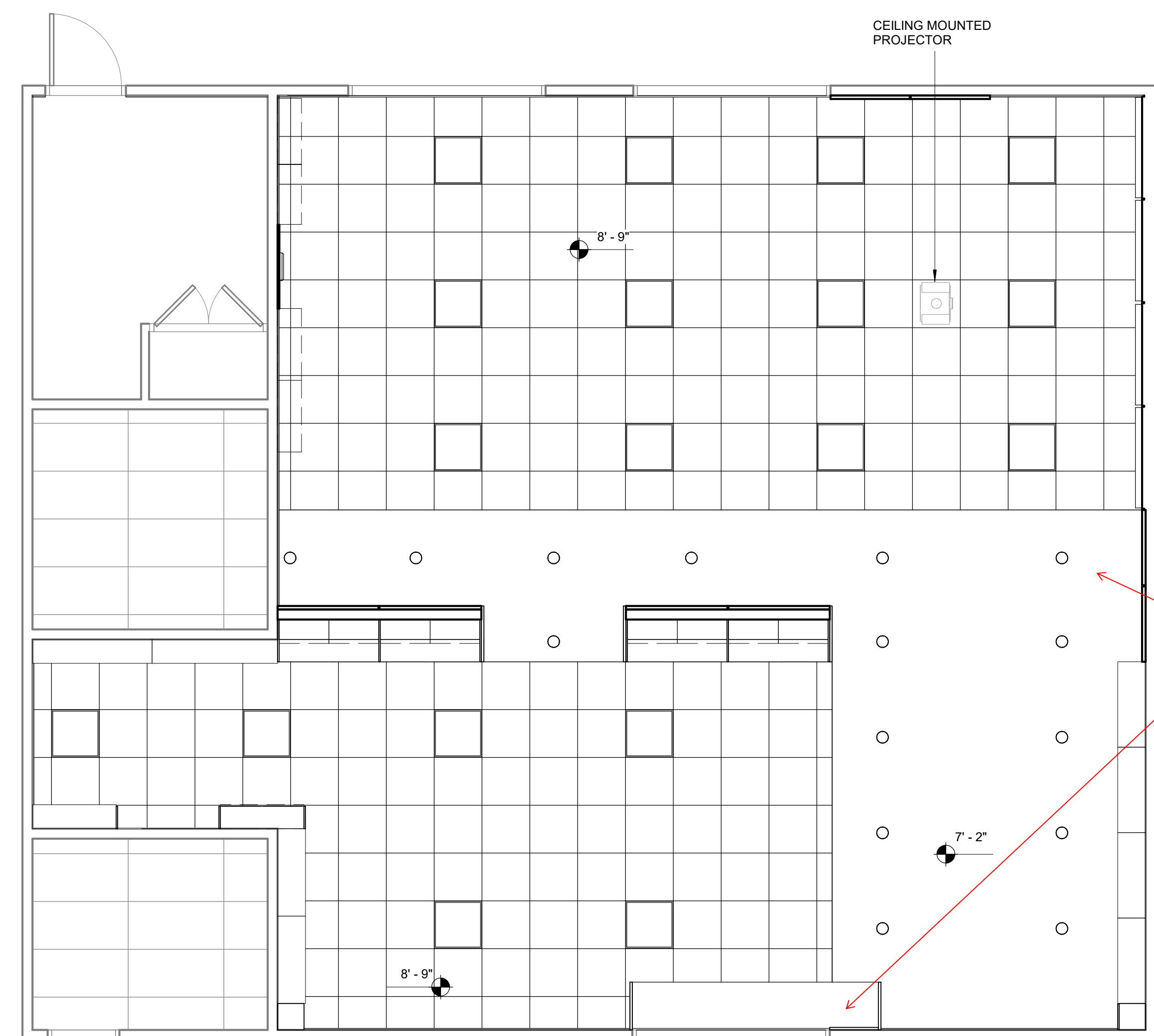
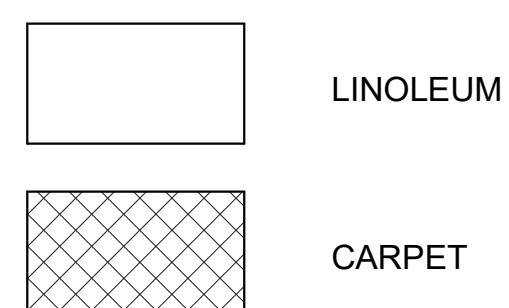
ALTERNATE SCOPE: BUILT-IN STORAGE THROUGHOUT ART ROOM



2 ENLARGED ART & LIBRARY FLOOR PLAN
1/4" = 1'-0"

ALTERNATE SCOPE: BUILT-IN SHELVING, DESKS, & FURNITURE THROUGHOUT LIBRARY

LEGEND



1 ENLARGED REFLECTED CEILING PLAN ART/LIBRARY
1/4" = 1'-0"

ALTERNATE SCOPE: CEILING & OTHER FINISHES THROUGHOUT LIBRARY & ART ROOM



ART CLASSROOM FACING SOUTHWEST



ART CLASSROOM FACING NORTHEAST



LIBRARY FACING NORTHWEST

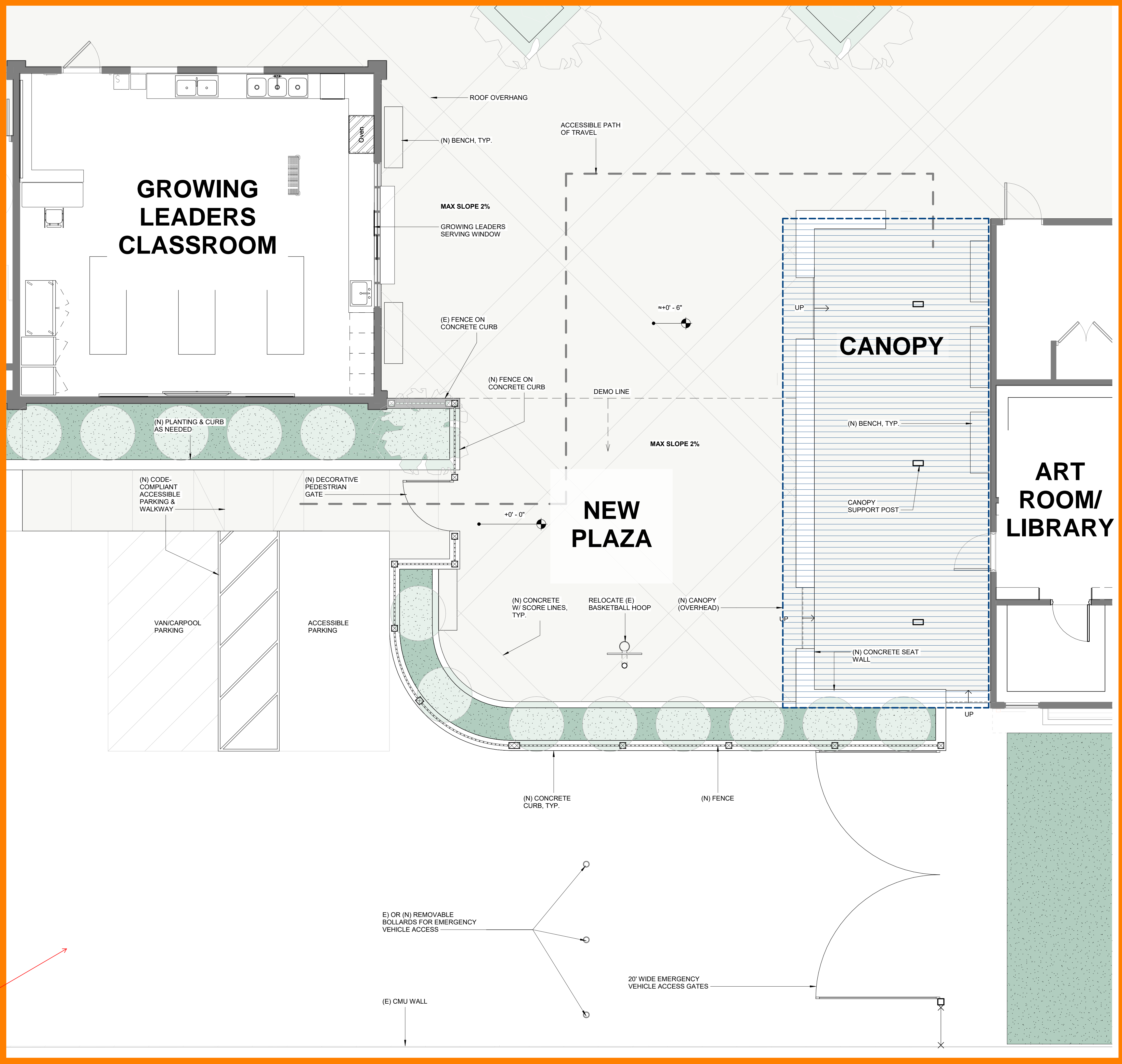


LIBRARY FACING SOUTHEAST

2 ART ROOM/LIBRARY



ALTERNATE SCOPE:
ENTIRE PLAZA
RENOVATION
INCLUDING CANOPY



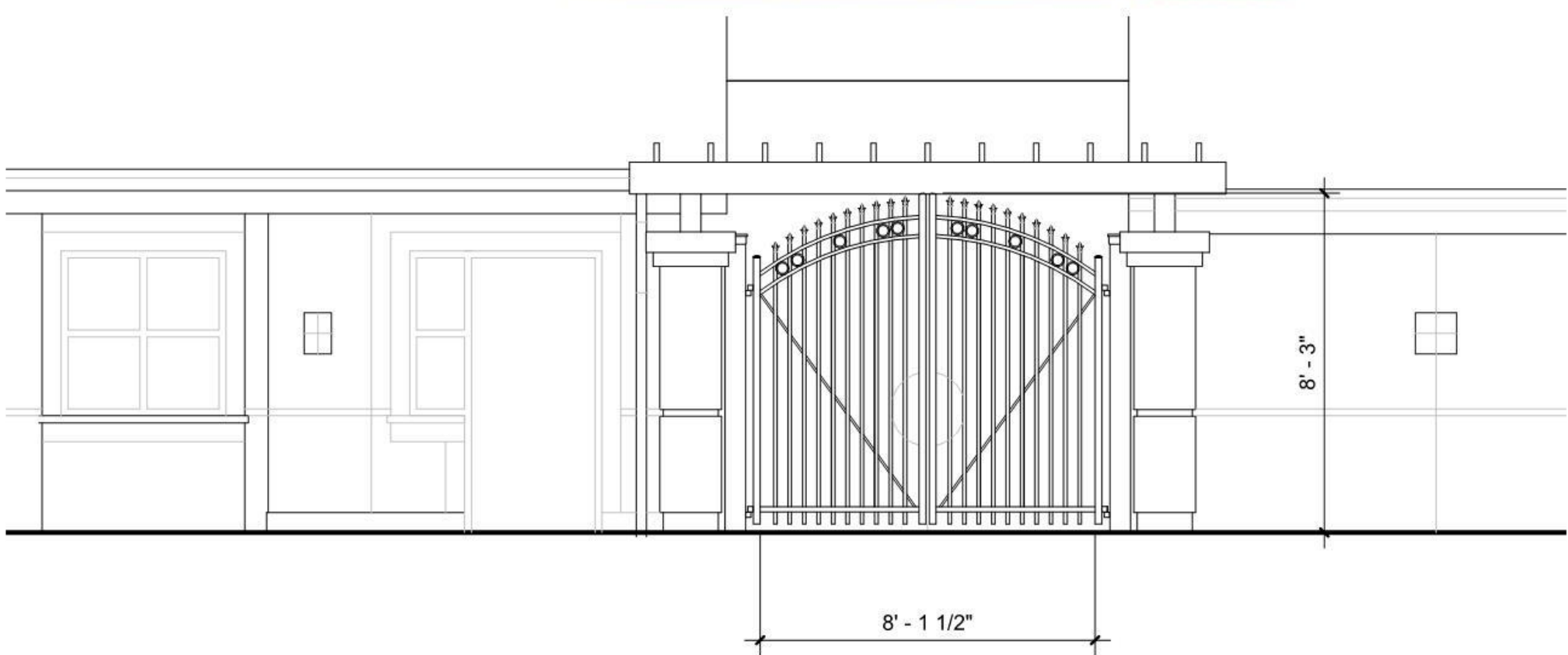
3 NEW PLAZA

SAMPLE EXISTING AND
PROPOSED GATES.
SECURITY IMPROVEMENTS
ALSO INCLUDE VIDEO
CAMERAS AND KEYPADS
AT SELECTED GATES

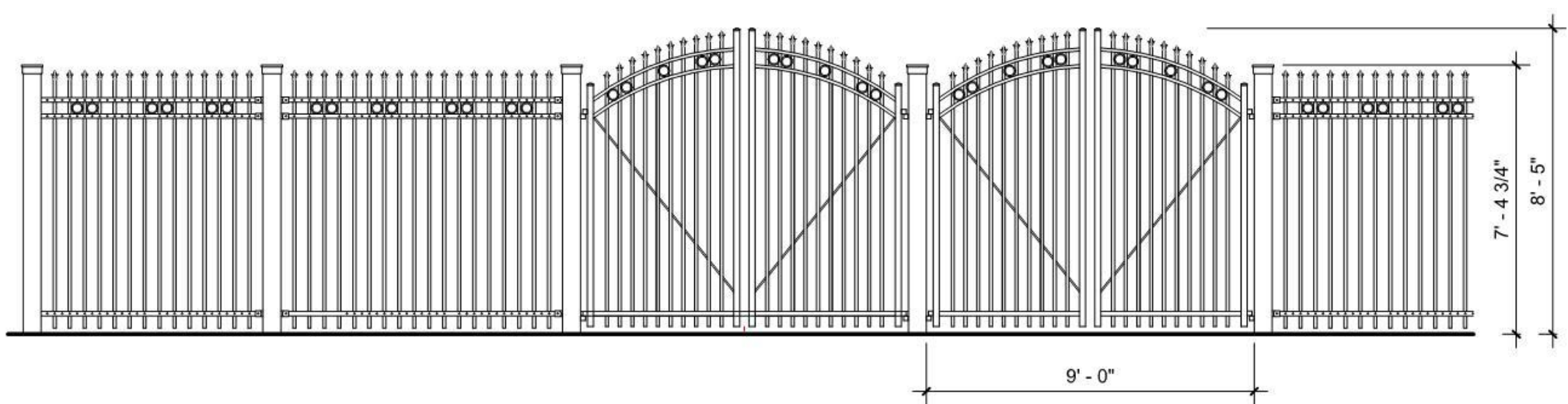
ALTERNATE
SCOPE: VIDEO
CAMERAS &
KEYPADS

ALTERNATE
SCOPE: TREES &
ORNAMENTAL
FENCE

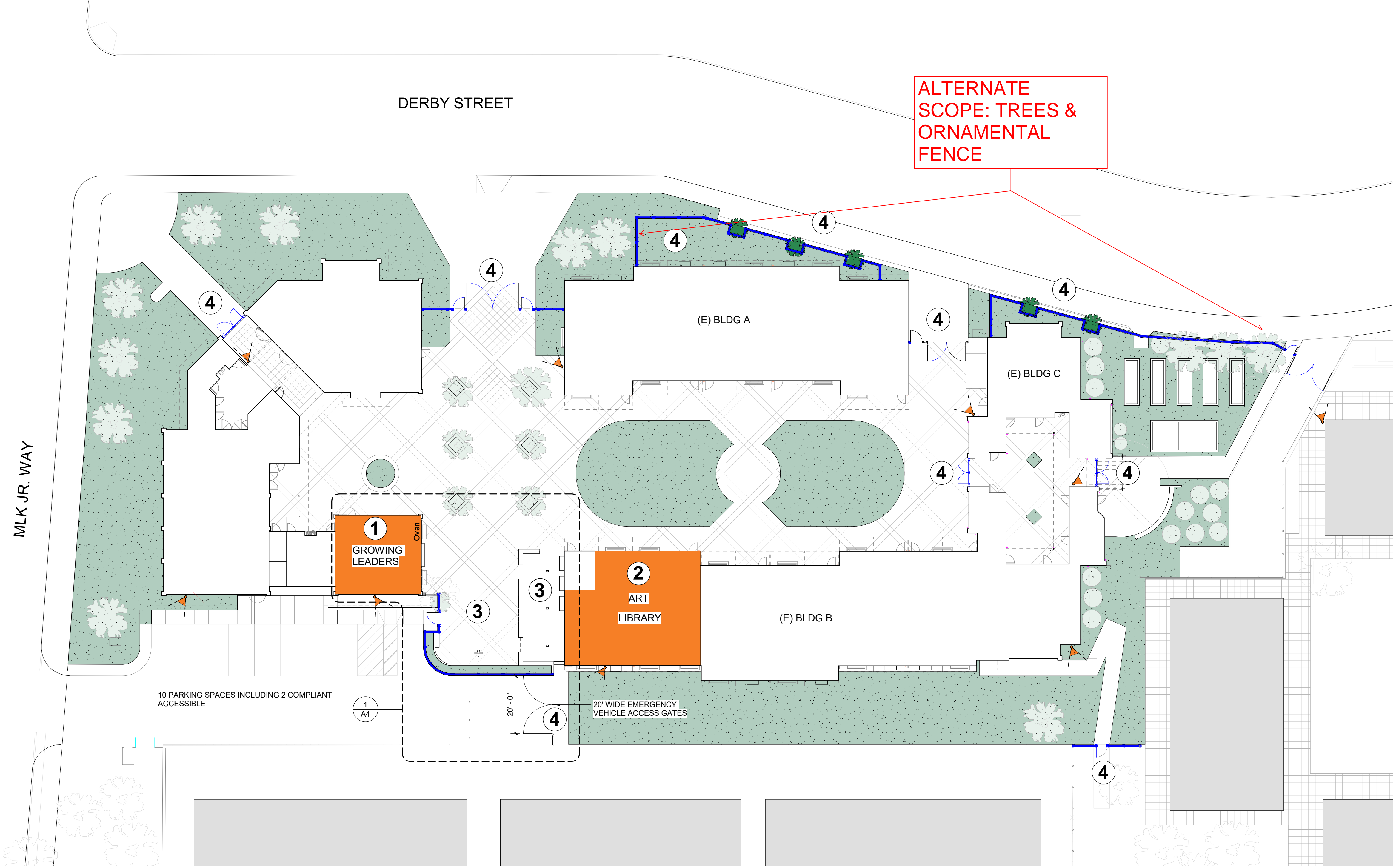
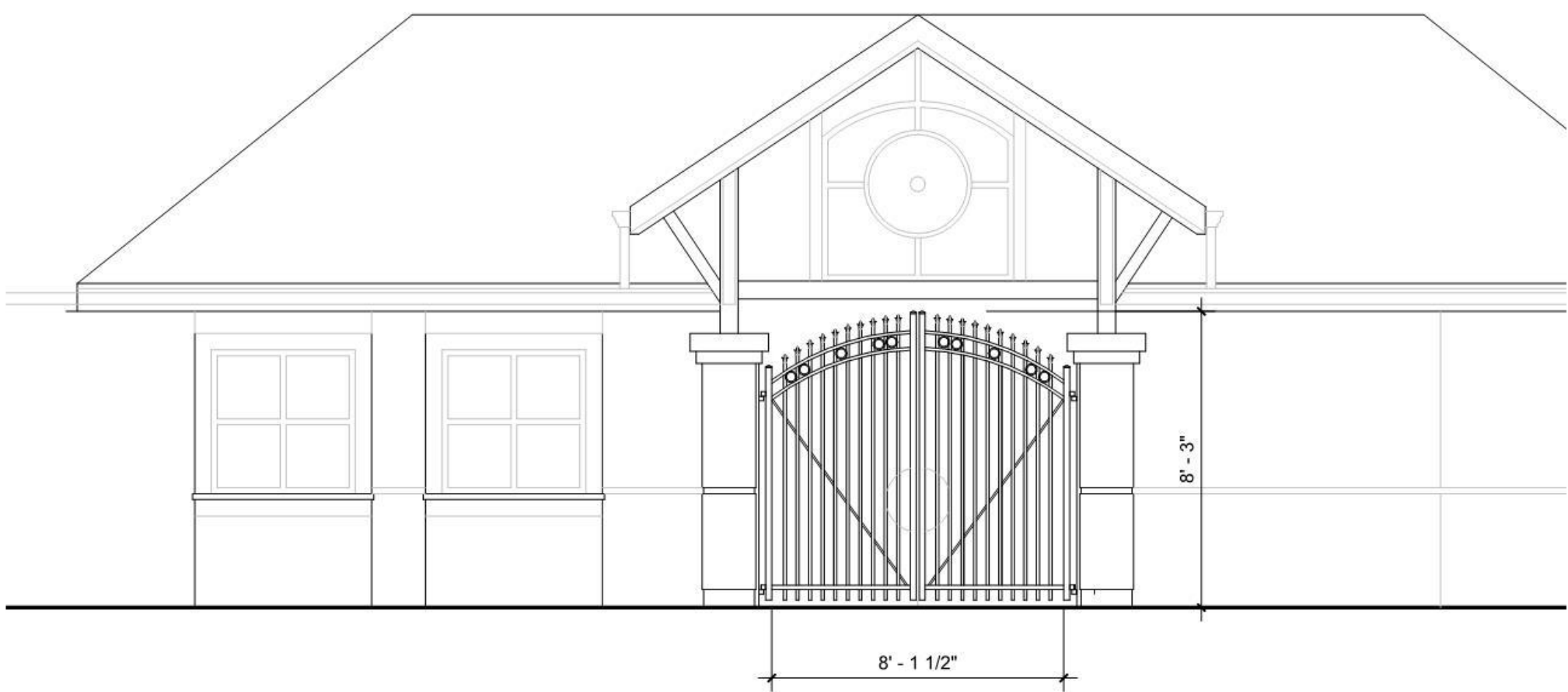
EAST
ENTRY GATE



DERBY STREET
ENTRY GATE



MLK JR WAY
ENTRY GATE



4 SECURITY IMPROVEMENTS