



► TRUSTEE AREA PROCESS

PASO ROBLES UNIFIED SCHOOL DISTRICT

APRIL 27, 2021



COOPERATIVE
STRATEGIES
ASSESS • PLAN • FUND • BUILD

► BACKGROUND

WHAT IS THE CALIFORNIA VOTING RIGHTS ACT ("CVRA")?

- Took effect January 1, 2003.
- Prohibits the use of "at-large" elections when such an election system:

"impairs the ability of a protected class to elect candidates of its choice or its ability to influence the outcome of an election...."

-(Elections Code §14027.)

- On February 26, 2019, Board Adopted Resolution 19-15 declaring its intent to transition from at-large elections to by-area elections by the 2022 election

► TYPES OF ELECTIONS

AT-LARGE ELECTIONS

Candidates must reside within the District's boundaries and are elected by all the voters who reside in the District's boundaries (Education Code Section 5030(a)). This is the method of election currently used by Paso Robles Joint Unified School District.

FROM-TRUSTEE AREA ELECTIONS

Candidates must reside in specific geographic areas within the District's boundaries called "Trustee Areas" but are elected by all the voters who reside in the District's boundaries (Education Code Section 5030(c)).

BY-TRUSTEE AREA ELECTIONS

Candidates must reside in specific Trustee Areas within the District's boundaries and are elected only by the voters who reside in the same Trustee Areas (Education Code Section 5030(b)). ***This method of election is the only method that is safe from challenge under the California Voting Rights Act.***

► TRUSTEE AREA PROCESS

DATE	ACTIVITY
April 27, 2021	Board meeting: First Pre-Map Public Hearing and Presentation Public Hearing on General Waiver Request Board Consideration of General Waiver Request
May 11, 2021	Board meeting: Second Pre-Map Public Hearing
May 12, 2021 to May 18, 2021	Preparation of draft trustee area scenarios
May 25, 2021	Board Meeting: First Public Hearing on Trustee Area Scenarios
June 8, 2021	Board Meeting: Second Public Hearing on Trustee Area Scenarios
June 22, 2021	Board Meeting: Third Public Hearing on Trustee Area Scenarios Board Selection of Trustee Area Map Board Consideration of Change in Election Method
July 2021	County Committee on School District Organization Holds a Public Hearing and Considers Approval of Change in Election Method and Trustee Area Map
September 9, 2021	State Board of Education Meeting; Waiver Application Consideration
September/October 2021	2020 Census Data is released
December 2021 to February 2022	District reviews study on new Census data and determines adjustments to boundaries, if necessary
November 8, 2022	First Election Held Utilizing Trustee Areas

► CONSIDERATIONS IN TRUSTEE AREAS



Each area shall contain nearly equal number of inhabitants



Follow man-made and natural geographic features, as much as possible



Drawn to comply with the Federal Voting Rights Act



Respect incumbency, if possible



Compact and contiguous, as much as possible



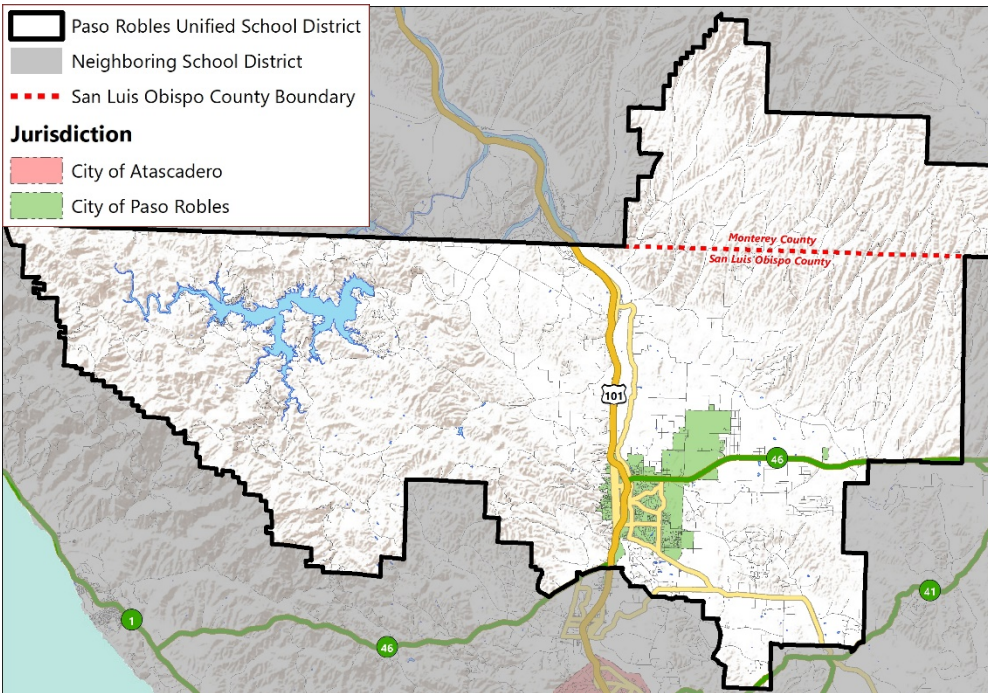
Other local considerations (i.e., school boundaries, locations of school sites)



Respect communities of interest, as much as possible

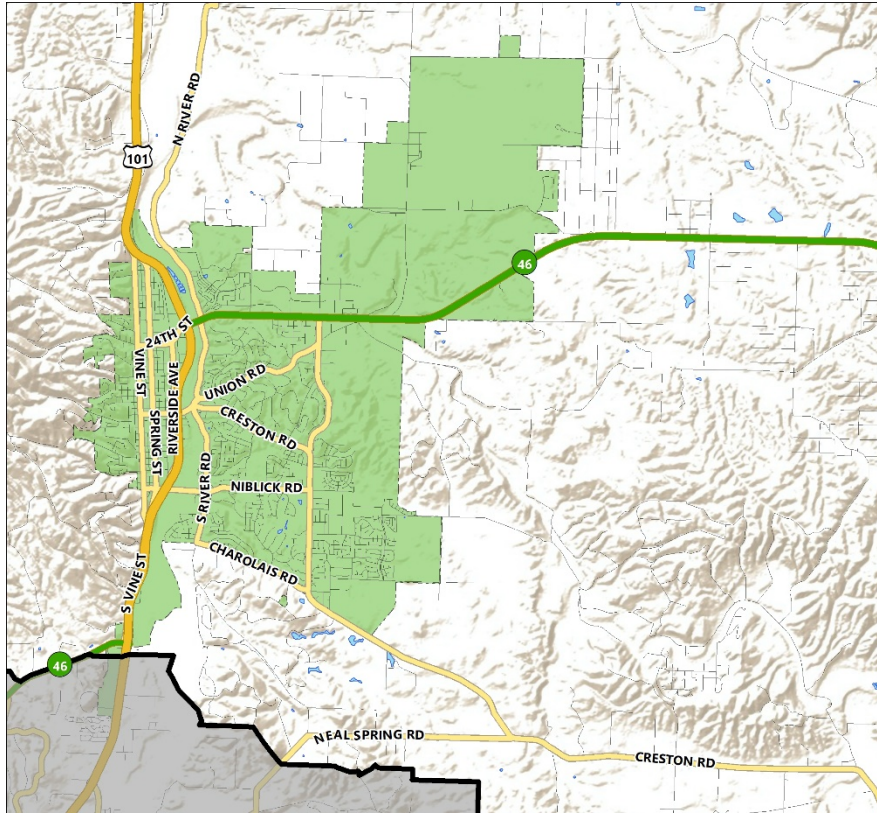
► DISTRICT DEMOGRAPHICS

2020 CENSUS DATA



Population	Total Population		Age 18 and over	
	Total	%	Total	%
Hispanic/Latino	13,538	29.33%	8,465	24.43%
White	29,901	64.77%	24,228	69.91%
Black / African American	667	1.44%	494	1.43%
American Indian / Alaska Native	289	0.63%	222	0.64%
Asian	697	1.51%	578	1.67%
Native Hawaiian/ Pacific Islander	66	0.14%	53	0.15%
Other	943	2.04%	568	1.64%
Two or More Races	64	0.14%	48	0.14%
Total	46,165	100.00%	34,656	100.00%

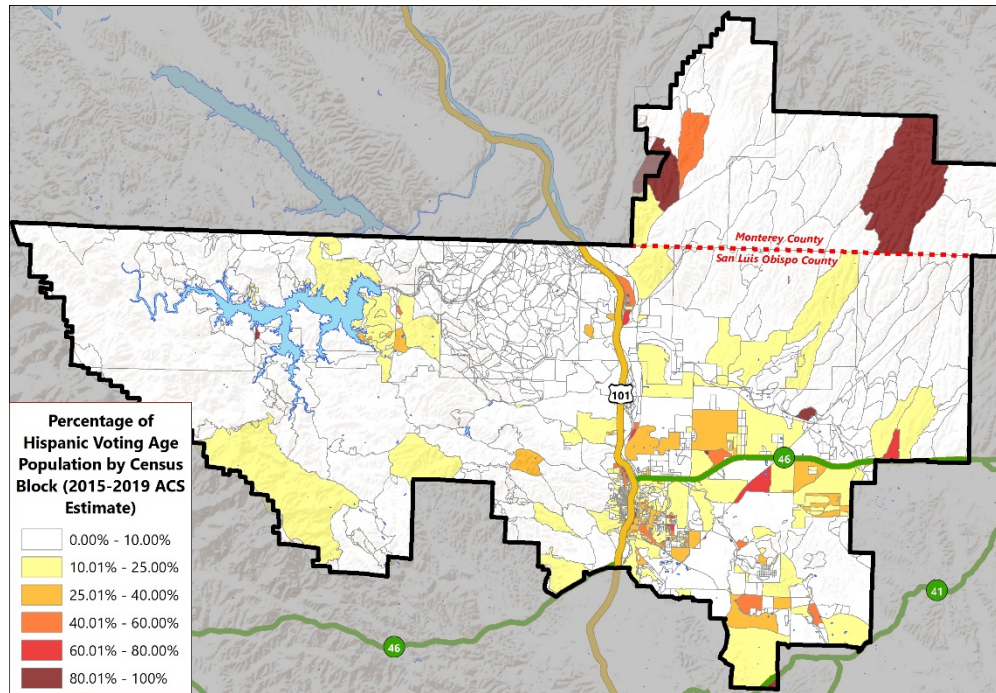
► DISTRICT DEMOGRAPHICS 2020 CENSUS DATA



Population	Total Population		Age 18 and over	
	Total	%	Total	%
Hispanic/Latino	13,538	29.33%	8,465	24.43%
White	29,901	64.77%	24,228	69.91%
Black / African American	667	1.44%	494	1.43%
American Indian / Alaska Native	289	0.63%	222	0.64%
Asian	697	1.51%	578	1.67%
Native Hawaiian/ Pacific Islander	66	0.14%	53	0.15%
Other	943	2.04%	568	1.64%
Two or More Races	64	0.14%	48	0.14%
Total	46,165	100.00%	34,656	100.00%

► DISTRICT DEMOGRAPHICS

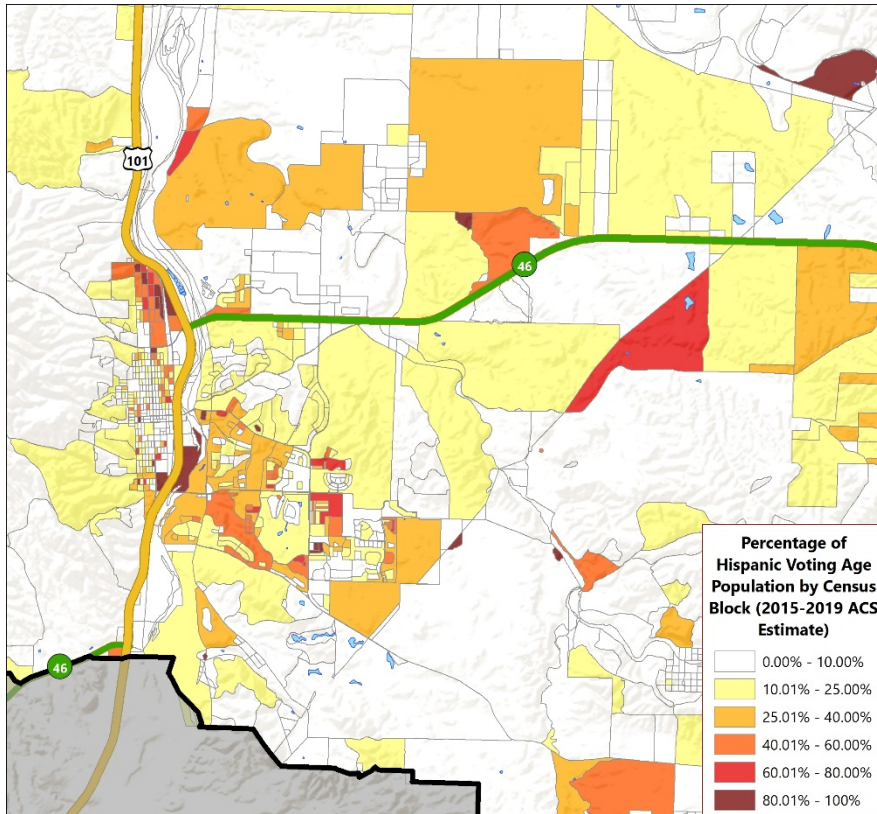
CITIZEN VOTING AGE POPULATION ESTIMATES



Population	2015-2019 CVAP	
	Total	%
Hispanic/Latino	7,685	21.95%
White	25,457	72.72%
Black / African American	582	1.66%
American Indian / Alaska Native	254	0.73%
Asian	592	1.69%
Native Hawaiian/ Pacific Islander	10	0.03%
Two or More Races	427	1.22%
Total	35,007	100.00%

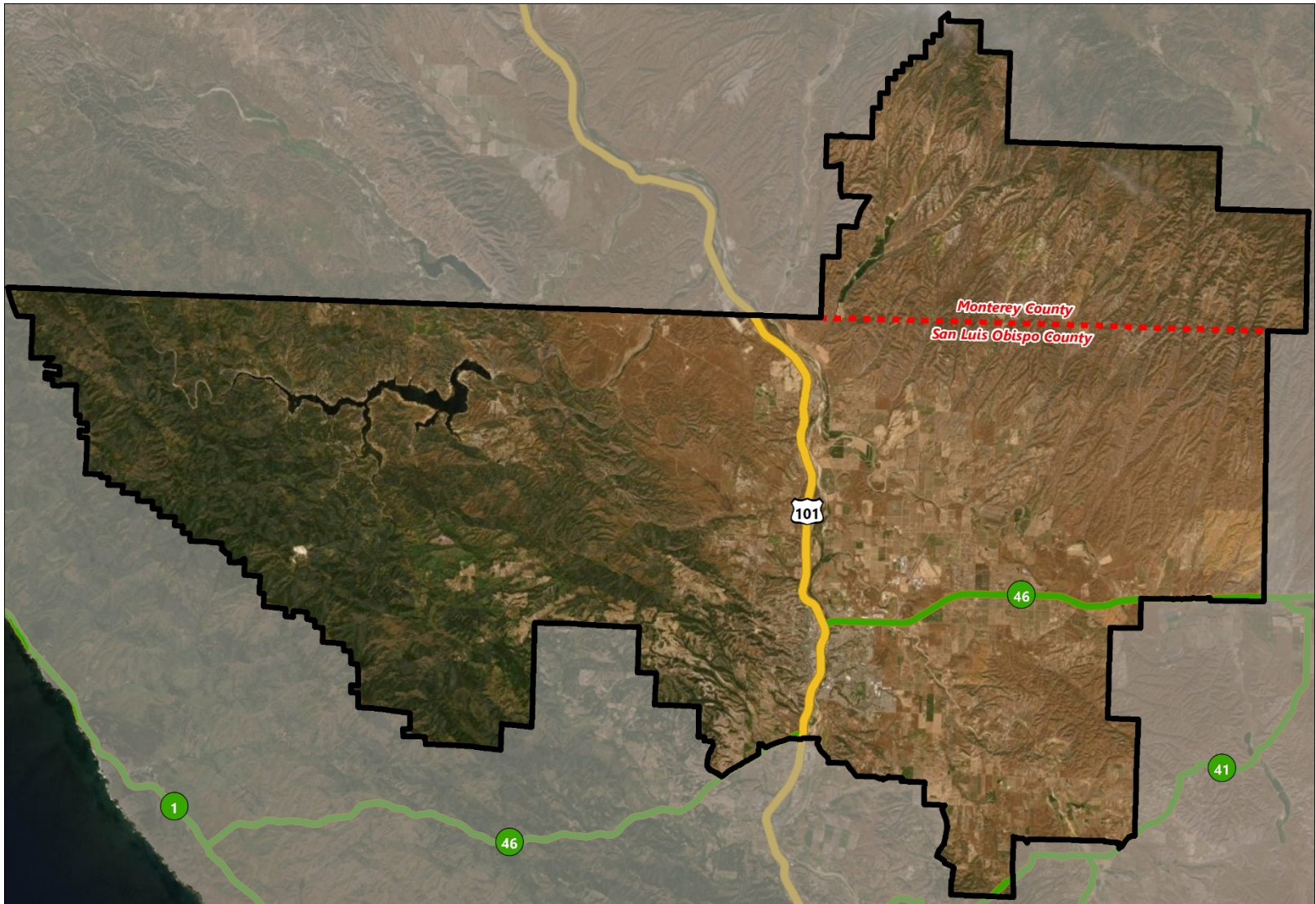
► DISTRICT DEMOGRAPHICS

CITIZEN VOTING AGE POPULATION ESTIMATES



Population	2015-2019 CVAP	
	Total	%
Hispanic/Latino	7,685	21.95%
White	25,457	72.72%
Black / African American	582	1.66%
American Indian / Alaska Native	254	0.73%
Asian	592	1.69%
Native Hawaiian/ Pacific Islander	10	0.03%
Two or More Races	427	1.22%
Total	35,007	100.00%

► HOW SHOULD LINES BE DRAWN?



- ▶ PRE-MAP PUBLIC HEARING

EXAMPLES OF FEEDBACK FOR MAPPING PROCESS

“I would like to keep Neighborhood X and Neighborhood Y in the same trustee area...”

► PRE-MAP PUBLIC HEARING
EXAMPLES OF FEEDBACK FOR MAPPING PROCESS

I think:

- ***Highway 46***
- ***Union Road***
- ***Spring Street***

... may make sense as a trustee area boundary because ...

- **It keeps communities together**
- **It provides good representation**

► PRE-MAP PUBLIC HEARING
EXAMPLES OF FEEDBACK FOR MAPPING PROCESS

I think:

- **All of Y community should be in one area**
- **Each elementary or middle school boundary should be in multiple/single areas**
- **Every trustee area should serve multiple school boundaries/sites**

... may make sense as a trustee area boundary because ...

- **It keeps communities together**
- **It provides good representation**



QUESTIONS

A row of yellow school buses is parked in a grassy field under a cloudy sky. The buses are slightly out of focus, and the overall image has a dark, moody tone. A large, stylized, semi-transparent letter 'S' graphic is overlaid on the image, with the word 'QUESTIONS' centered within it.