

La Cañada Unified School District
Paradise Canyon Elementary School

BOARD MEETING #2
APRIL 27, 2021



PRESENTATION OUTLINE



1. SITE PLANNING OPTIONS

- OPTIONS 1, 2, AND 3
- UPDATED OPTION 3B

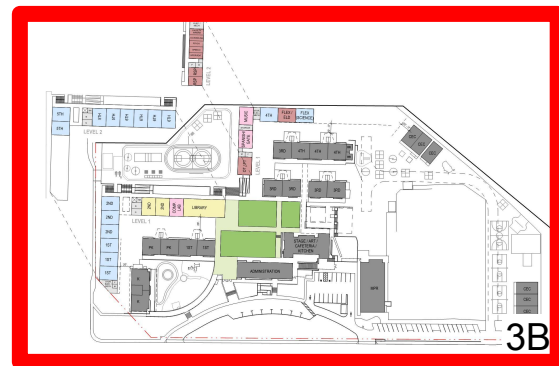
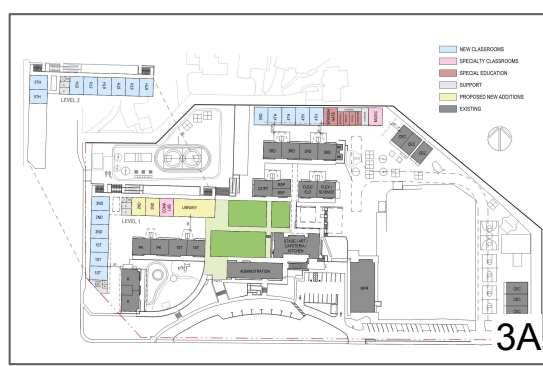
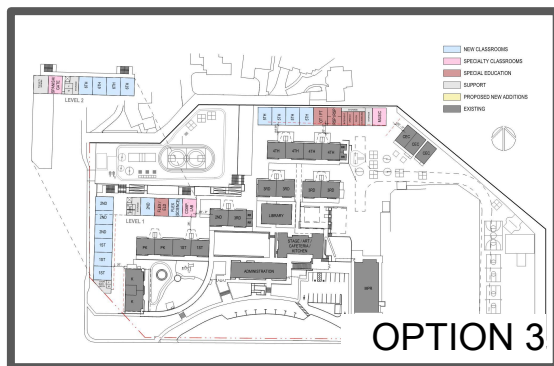
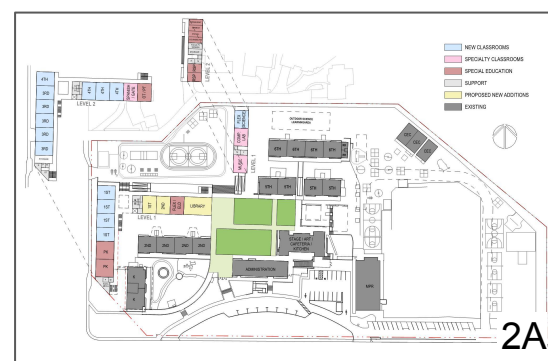
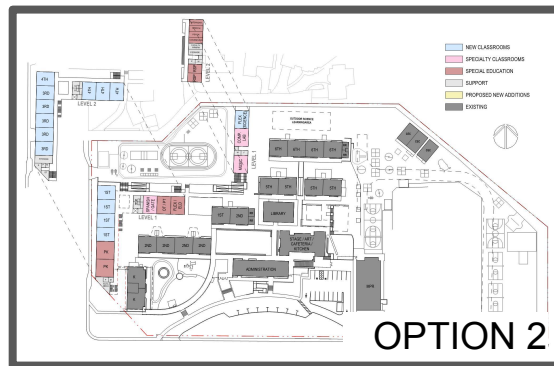
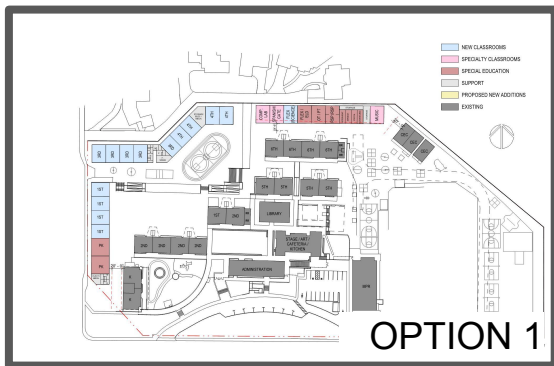
2. MAIN ENTRY DROP-OFF AND PARKING

3. NEXT STEPS



CURRENT

SITE PLANNING OPTIONS



RECOMMENDED OPTION : "3B" PREFERRED

An aerial architectural rendering of a school campus. The scene shows several large, modern school buildings with flat roofs and grey walls. There are green lawns, trees, and parking lots with cars. A road with a yellow curb is on the left. The text "OPTION 1" is overlaid in the center in a large, bold, black font.

OPTION 1

SITE PLAN - OPTION 1



PROS

- ALL ONE-STORY
- SMALL MASSING/ NEIGHBOR IMPACT

CONS

- DECREASE SIZE OF UPPER PLAYGROUND
- LARGE BLDG FOOTPRINT
- LONG CONSTRUCTION DURATION

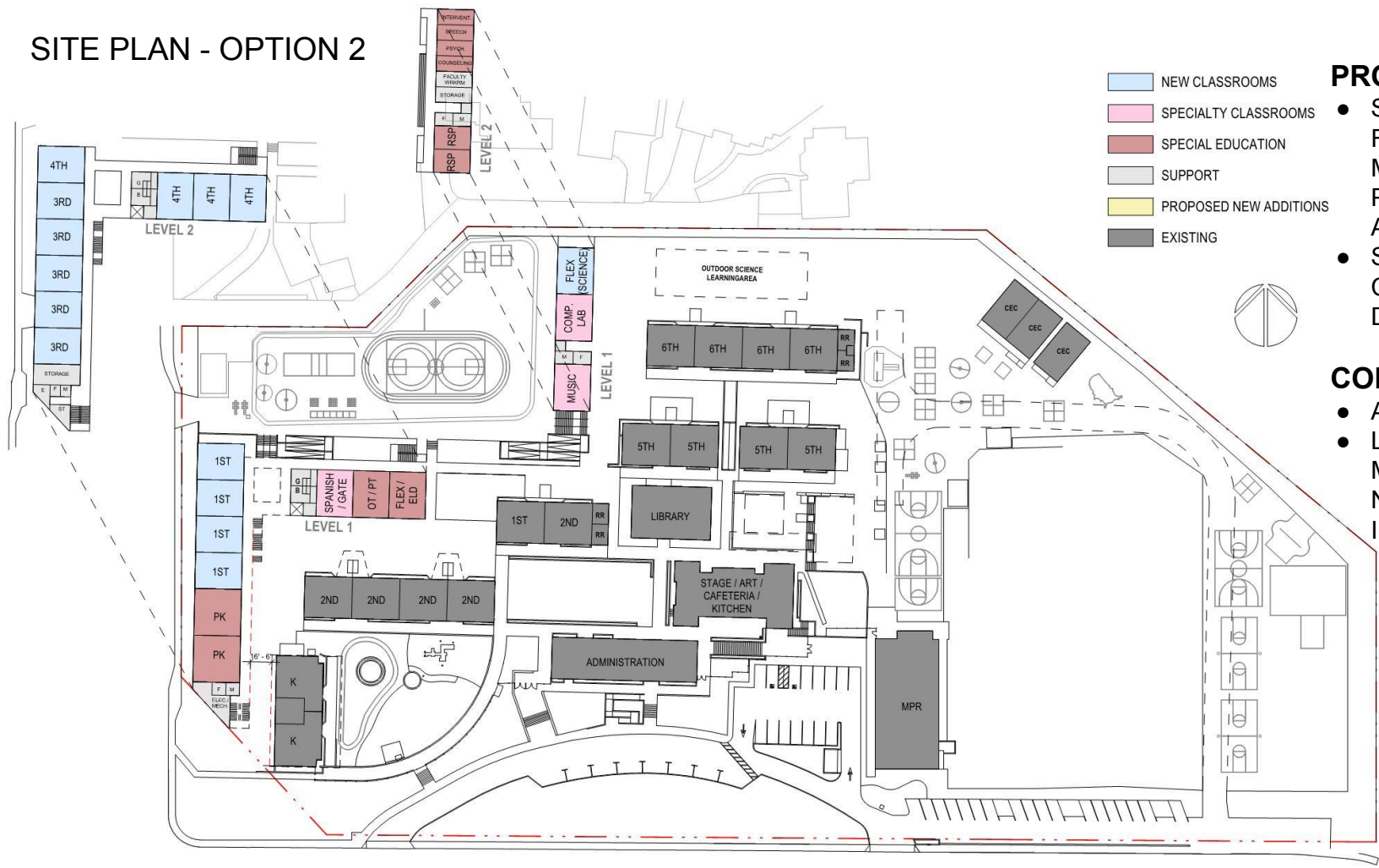
[Click to view animation](#)



An aerial architectural rendering of a school campus. The scene shows several interconnected school buildings with grey roofs and white walls. There are multiple parking lots with cars, green lawns, and trees. A large, open grassy field is in the foreground. The text "OPTION 2" is overlaid in the center of the image.

OPTION 2

SITE PLAN - OPTION 2



- NEW CLASSROOMS
- SPECIALTY CLASSROOMS
- SPECIAL EDUCATION
- SUPPORT
- PROPOSED NEW ADDITIONS
- EXISTING

- PROS**
- SMALLER BLDG FOOTPRINT/ MORE PLAYGROUND AREA
 - SHORTER CONSTRUCTION DURATION

- CONS**
- ALL TWO-STORY
 - LARGER MASSING/ NEIGHBOR IMPACT

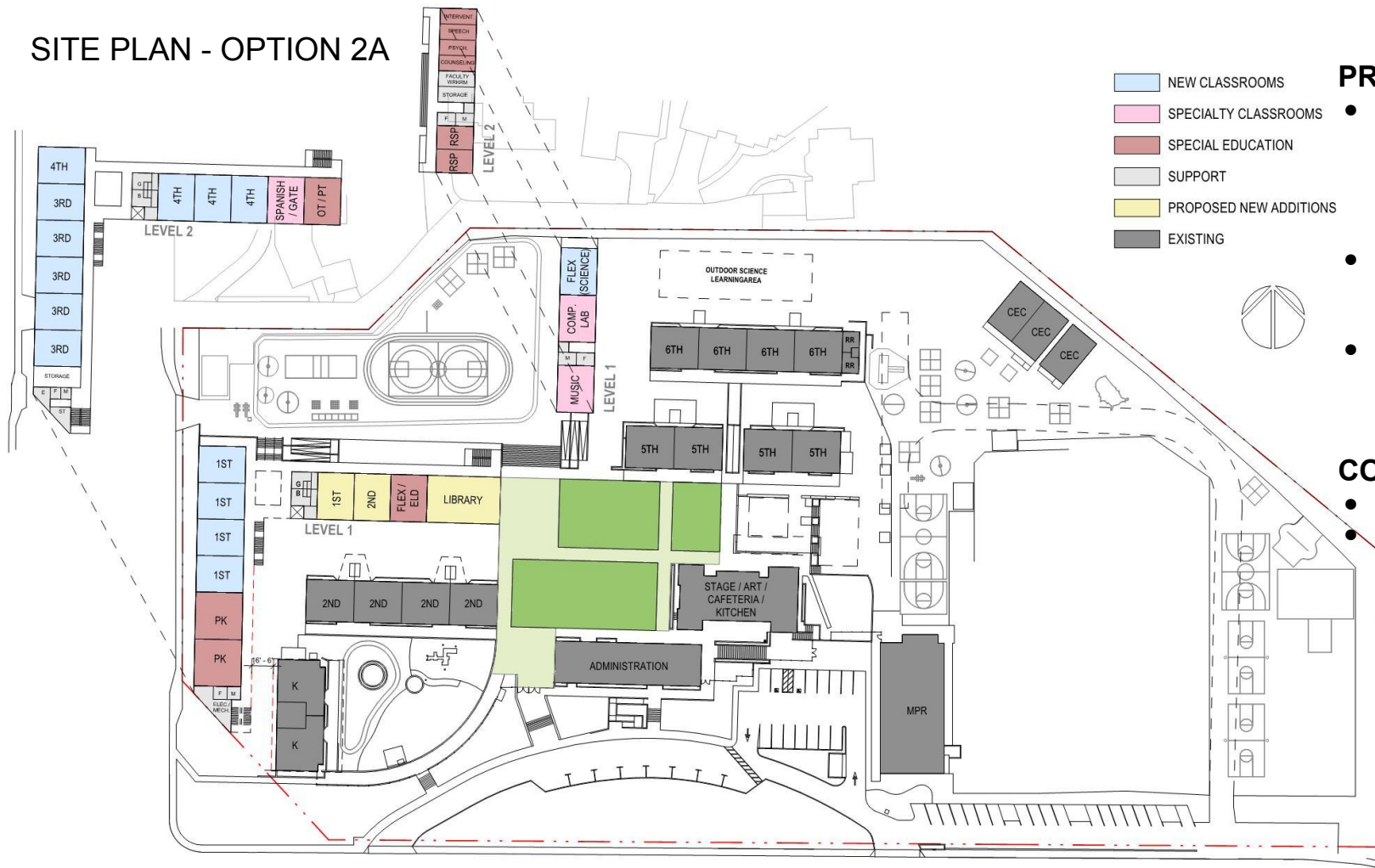
[click here to view animation](#)



An aerial architectural rendering of a school campus. The scene shows several buildings, including a large central building and smaller structures. There are parking lots with cars, green lawns, and trees. The text "OPTION 2A" is overlaid in the center. The rendering is in a light, semi-transparent style, showing the underlying terrain and other buildings in the background.

OPTION 2A

SITE PLAN - OPTION 2A



PROS

- SMALLER BLDG FOOTPRINT/
MORE
PLAYGROUND
AREA
- SHORTER
CONSTRUCTION
DURATION
- OPENS UP
CENTER OF
CAMPUS

CONS

- ALL TWO-STORY
- LARGER MASSING/
NEIGHBOR
IMPACT

[click here to view animation](#)





SITE PLAN - OPTION 3



PROS

- MIXED-STORY
- LARGE MASSING ROTATED AWAY FROM CAMPUS EDGE

CONS

- LARGER BLDG FOOTPRINT

1. *P.E. Area*
2. *Outdoor Amphitheater*
3. *Outdoor Seating with Canopy Trees*
4. *Street Frontage Landscape*
5. *Outdoor Classroom*
6. *Buffer Landscape*

1. *P.E. Area*
2. *Outdoor Amphitheater*
3. *Outdoor Seating with Canopy Trees*
4. *Street Frontage Landscape*
5. *Outdoor Classroom*
6. *Buffer Landscape*



[click here to view animation](#)



An aerial architectural rendering of a proposed school campus layout, labeled "OPTION 3A". The design features a central cluster of buildings, including a large white rectangular structure and several smaller grey buildings. To the left, a road with a yellow curb and a parking lot with several cars is visible. A large green lawn occupies the bottom right corner. The background shows a dense residential area with numerous houses. The text "OPTION 3A" is prominently displayed in the center of the image.

OPTION 3A

[illegible]

- MIXED-STORY
- LARGE MASSING
ROTATED AWAY
FROM CAMPUS
EDGE
- OPENS UP
CENTER OF
CAMPUS

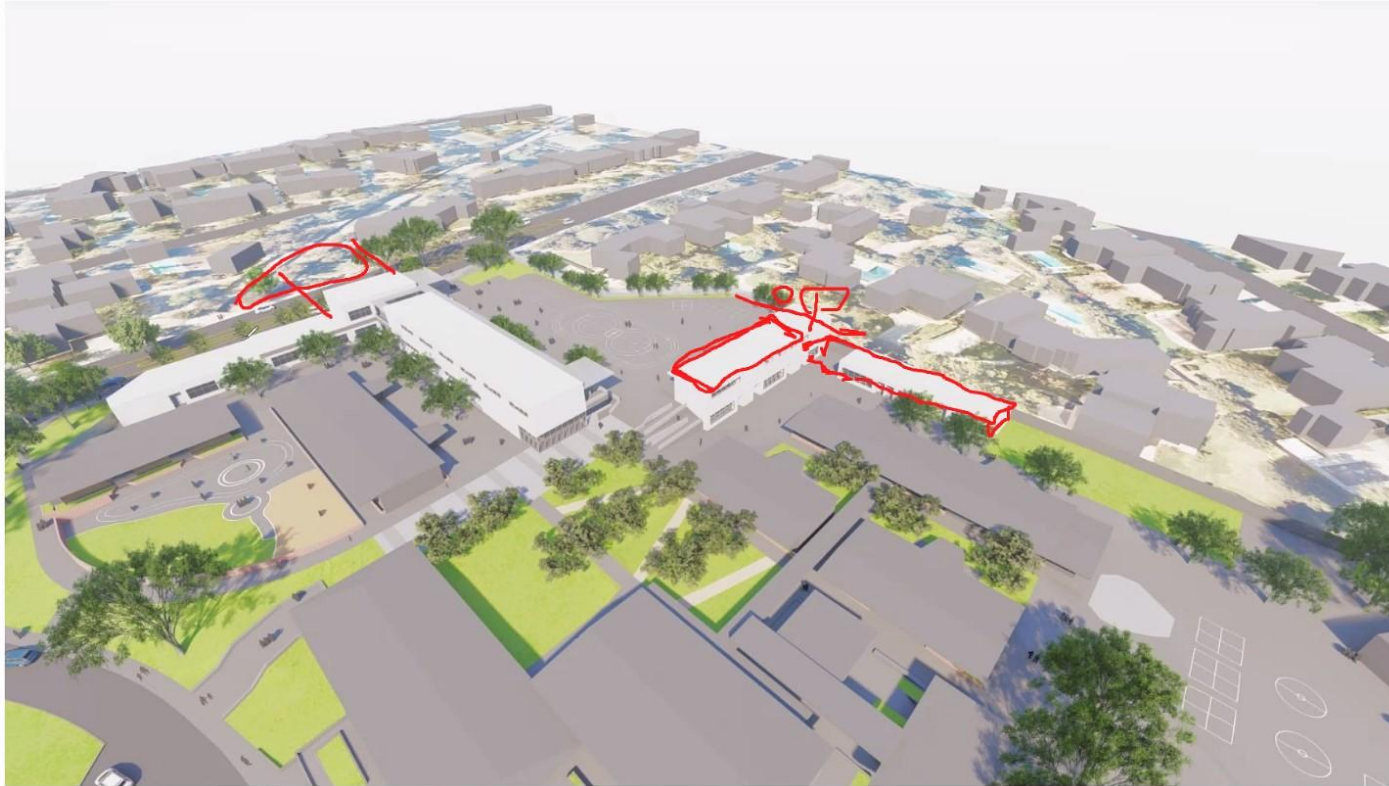
- LARGER BLDG FOOTPRINT

[click here to view animation](#)



An aerial architectural rendering of a school campus. The scene includes several white, modern-style buildings, a large paved parking lot with several cars, a green lawn, and a playground area with trees. In the background, there are more buildings and a body of water. The text "OPTION 3B" is overlaid in the center of the image.

OPTION 3B



 Jake Martinez	 Dennis Smith GG4
 Mark Evans	 Josh Epstein
 kpuglia@lcsd.net	 Caroline Ander...
 Harry Drake	 Ms. Anais Wenn
 Joe Radabaugh	 Jamie Lewsado...
 Wendy Sinnette	Harold Pierre
 nvartanian@lcsd.net	

SITE PLAN - OPTION 3B

The site plan for Option 3B illustrates a two-level building layout. Level 1 (ground floor) features a central courtyard area. To the left of the courtyard are classrooms labeled 1ST, 2ND, and 3RD. To the right of the courtyard are the Administration, Stage/Art/Cafeteria/Kitchen, and a large Multipurpose Room (MPR). A green-shaded area, likely a courtyard or garden, is situated between the classroom wings and the central building. Level 2 (upper floor) includes classrooms labeled 5TH and 6TH. A Music room is located near the courtyard, and a Flex/ELD/Science room is located near the MPR. The plan also shows a central courtyard area, parking areas, and surrounding context including a road and existing buildings.

LEVEL 1

- 1ST
- 2ND
- 3RD
- 4TH
- 5TH
- 6TH
- 7TH
- 8TH
- 9TH
- 10TH
- 11TH
- 12TH
- 13TH
- 14TH
- 15TH
- 16TH
- 17TH
- 18TH
- 19TH
- 20TH
- 21TH
- 22TH
- 23TH
- 24TH
- 25TH
- 26TH
- 27TH
- 28TH
- 29TH
- 30TH
- 31TH
- 32TH
- 33TH
- 34TH
- 35TH
- 36TH
- 37TH
- 38TH
- 39TH
- 40TH
- 41TH
- 42TH
- 43TH
- 44TH
- 45TH
- 46TH
- 47TH
- 48TH
- 49TH
- 50TH
- 51TH
- 52TH
- 53TH
- 54TH
- 55TH
- 56TH
- 57TH
- 58TH
- 59TH
- 60TH
- 61TH
- 62TH
- 63TH
- 64TH
- 65TH
- 66TH
- 67TH
- 68TH
- 69TH
- 70TH
- 71TH
- 72TH
- 73TH
- 74TH
- 75TH
- 76TH
- 77TH
- 78TH
- 79TH
- 80TH
- 81TH
- 82TH
- 83TH
- 84TH
- 85TH
- 86TH
- 87TH
- 88TH
- 89TH
- 90TH
- 91TH
- 92TH
- 93TH
- 94TH
- 95TH
- 96TH
- 97TH
- 98TH
- 99TH
- 100TH

LEVEL 2

- 1ST
- 2ND
- 3RD
- 4TH
- 5TH
- 6TH
- 7TH
- 8TH
- 9TH
- 10TH
- 11TH
- 12TH
- 13TH
- 14TH
- 15TH
- 16TH
- 17TH
- 18TH
- 19TH
- 20TH
- 21TH
- 22TH
- 23TH
- 24TH
- 25TH
- 26TH
- 27TH
- 28TH
- 29TH
- 30TH
- 31TH
- 32TH
- 33TH
- 34TH
- 35TH
- 36TH
- 37TH
- 38TH
- 39TH
- 40TH
- 41TH
- 42TH
- 43TH
- 44TH
- 45TH
- 46TH
- 47TH
- 48TH
- 49TH
- 50TH
- 51TH
- 52TH
- 53TH
- 54TH
- 55TH
- 56TH
- 57TH
- 58TH
- 59TH
- 60TH
- 61TH
- 62TH
- 63TH
- 64TH
- 65TH
- 66TH
- 67TH
- 68TH
- 69TH
- 70TH
- 71TH
- 72TH
- 73TH
- 74TH
- 75TH
- 76TH
- 77TH
- 78TH
- 79TH
- 80TH
- 81TH
- 82TH
- 83TH
- 84TH
- 85TH
- 86TH
- 87TH
- 88TH
- 89TH
- 90TH
- 91TH
- 92TH
- 93TH
- 94TH
- 95TH
- 96TH
- 97TH
- 98TH
- 99TH
- 100TH

- MIXED-STORY
- LARGE MASSING
ROTATED AWAY
FROM CAMPUS
EDGE
- OPENS UP
CENTER OF
CAMPUS
- OPENS UP
NORTHEAST
CAMPUS
CORNER

● LARGER BLDG
FOOTPRINT

Legend

1. P.E. Area
2. Outdoor Amphitheater
3. Outdoor Reading Garden
4. Lawn Area
5. Outdoor Classroom
6. Buffer Landscape
7. Street Frontage Landscape
8. School Garden
9. Expanded Central Lawn / Quad
10. Central Promenade







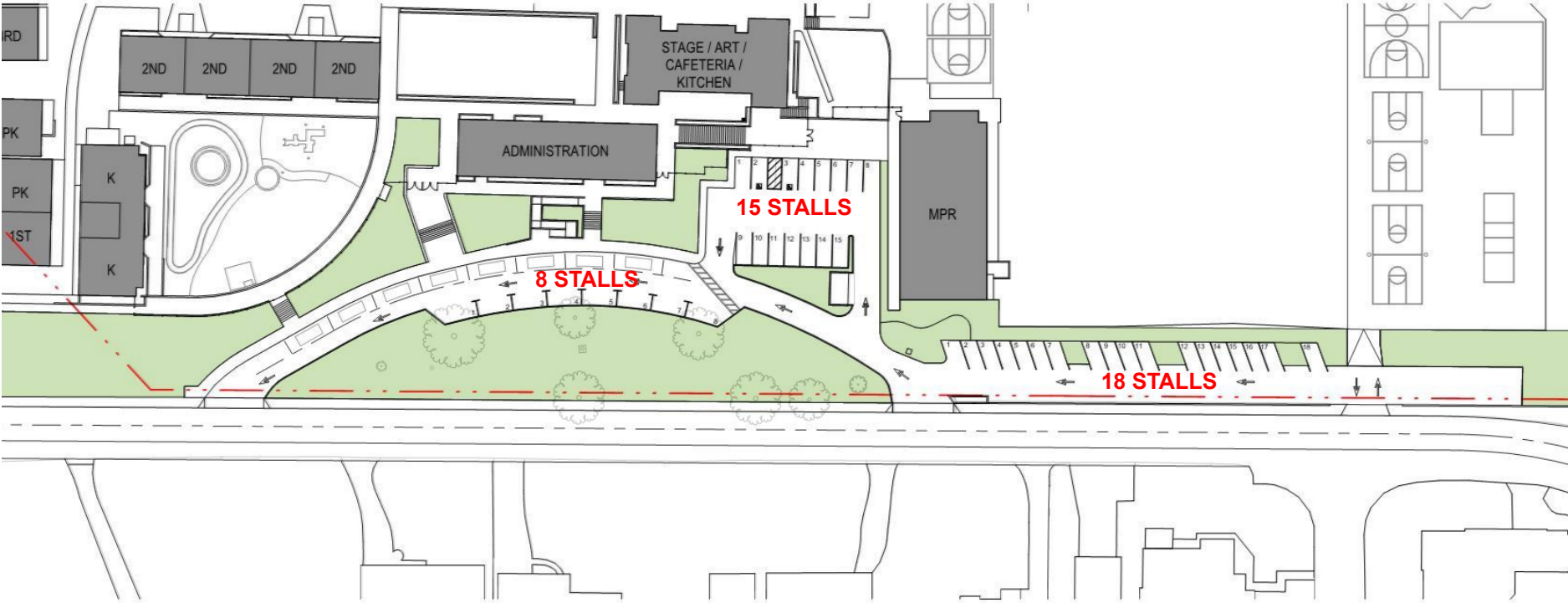


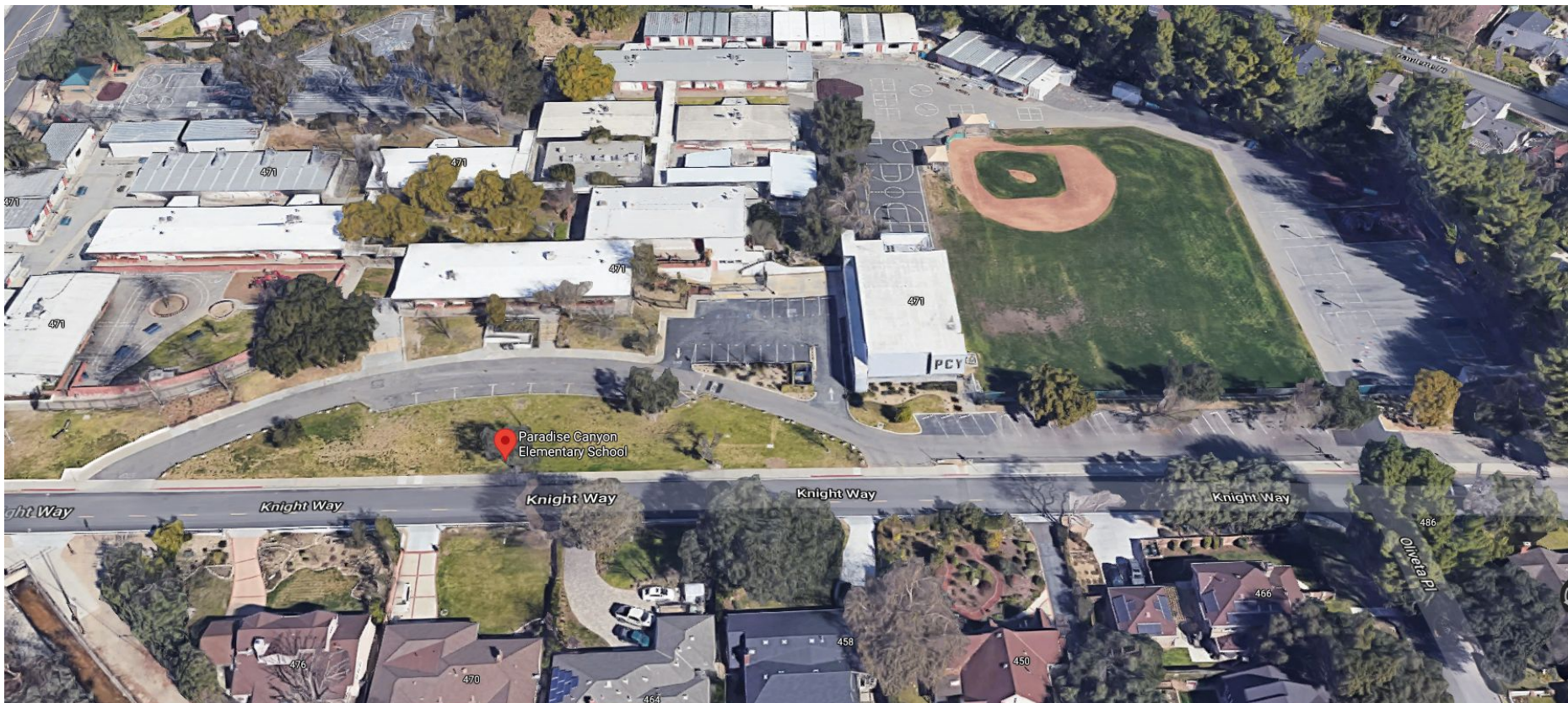
[click here to view animation](#)



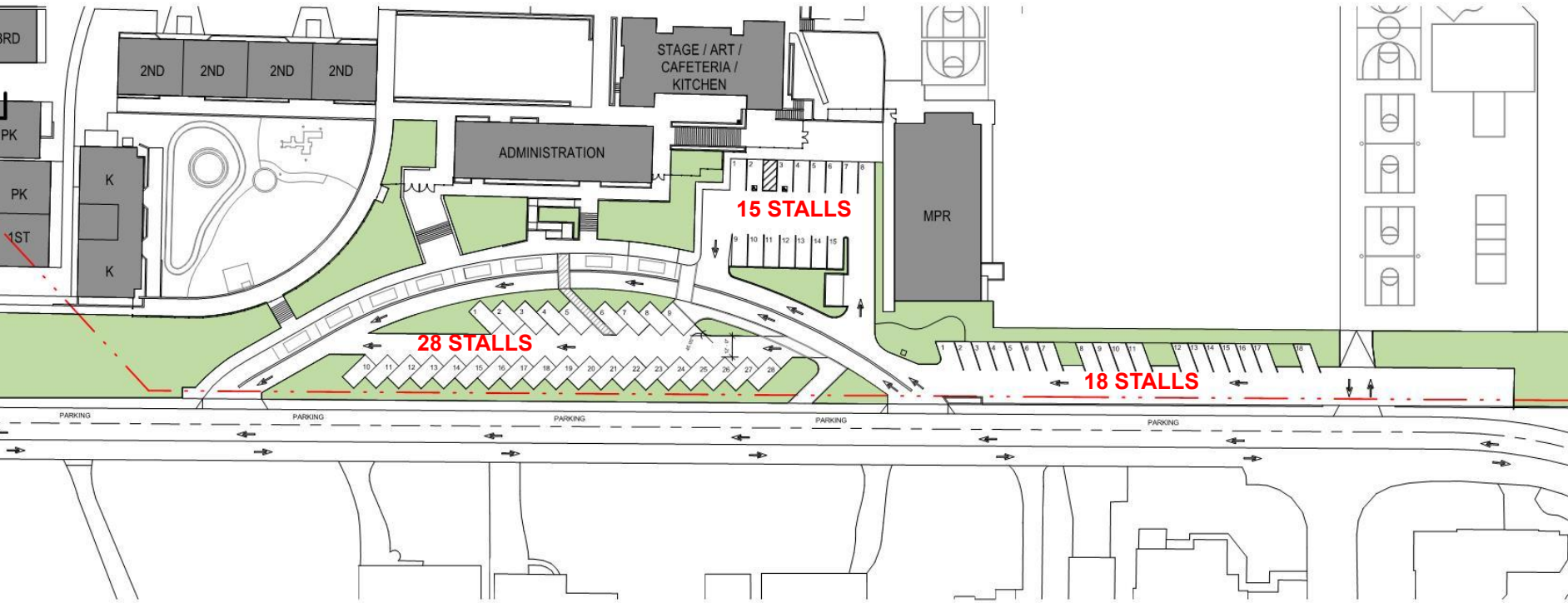
MAIN ENTRY DROP-OFF AND PARKING STUDIES

DROP OFF - EXISTING





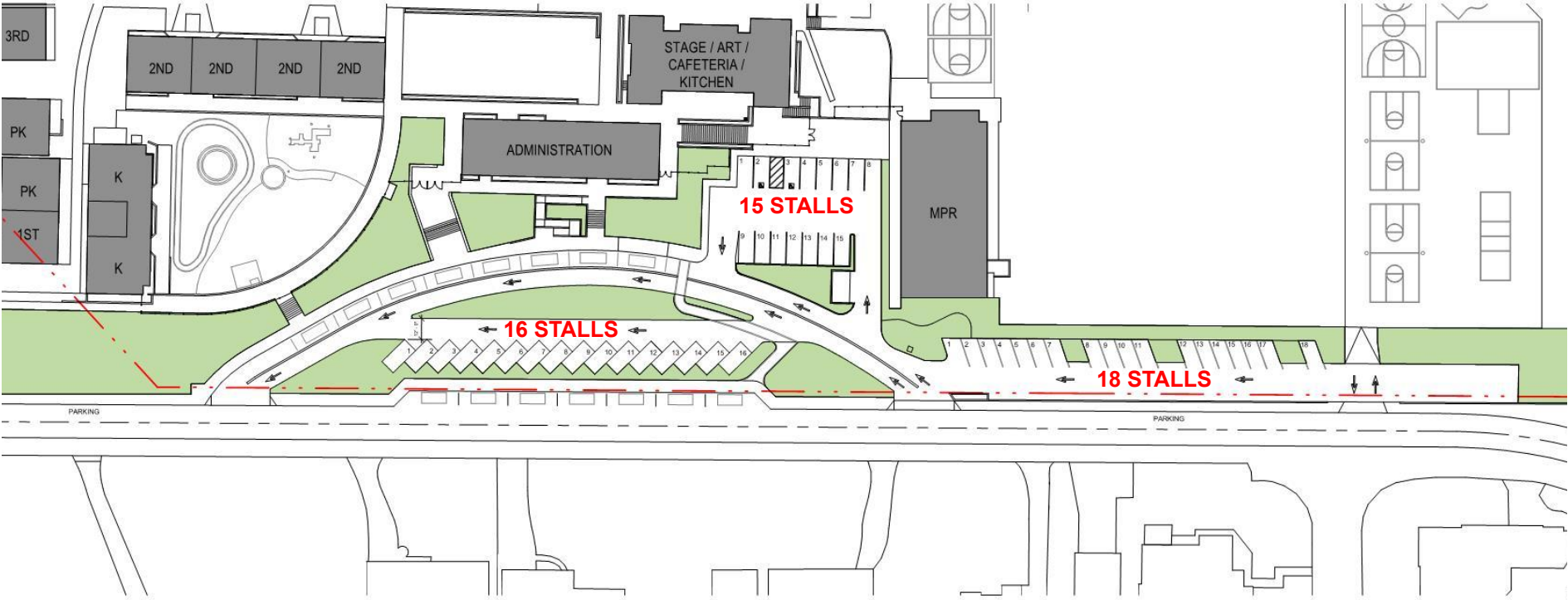
DROP-OFF - OPTION 1



[click here to view animation](#)



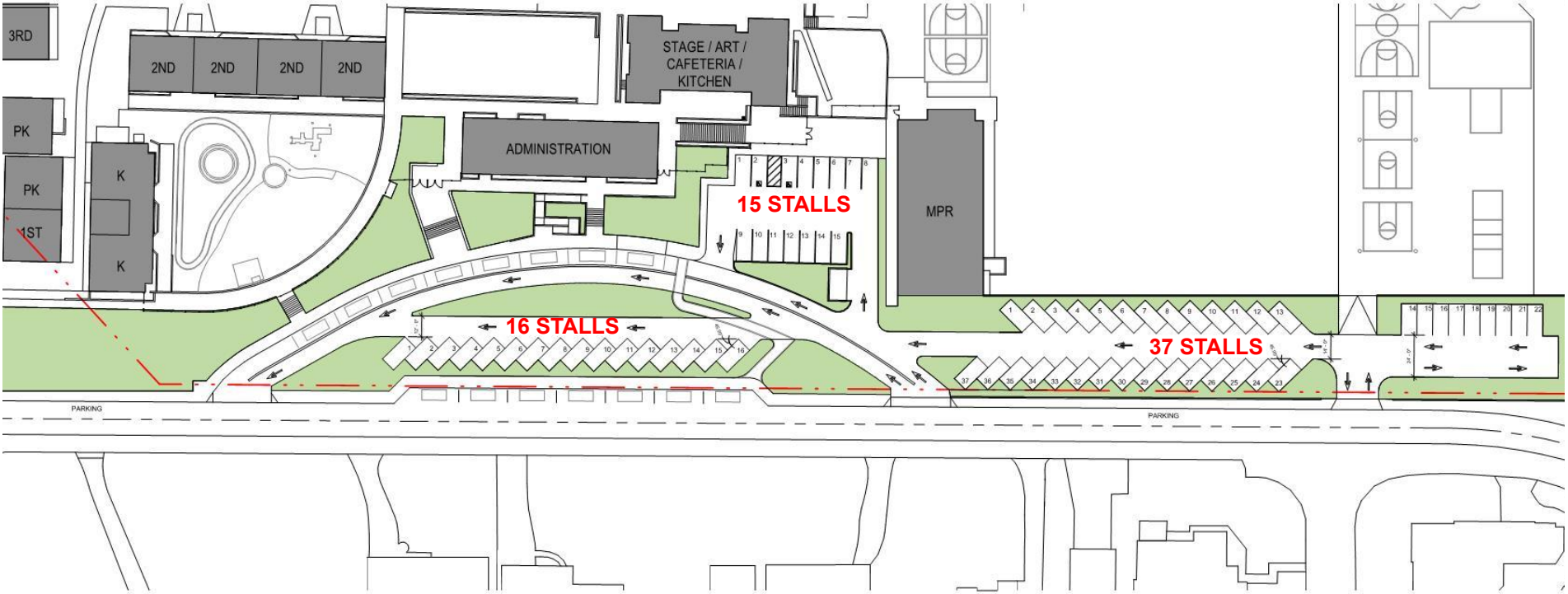
DROP-OFF - OPTION 2



[click here to view animation](#)



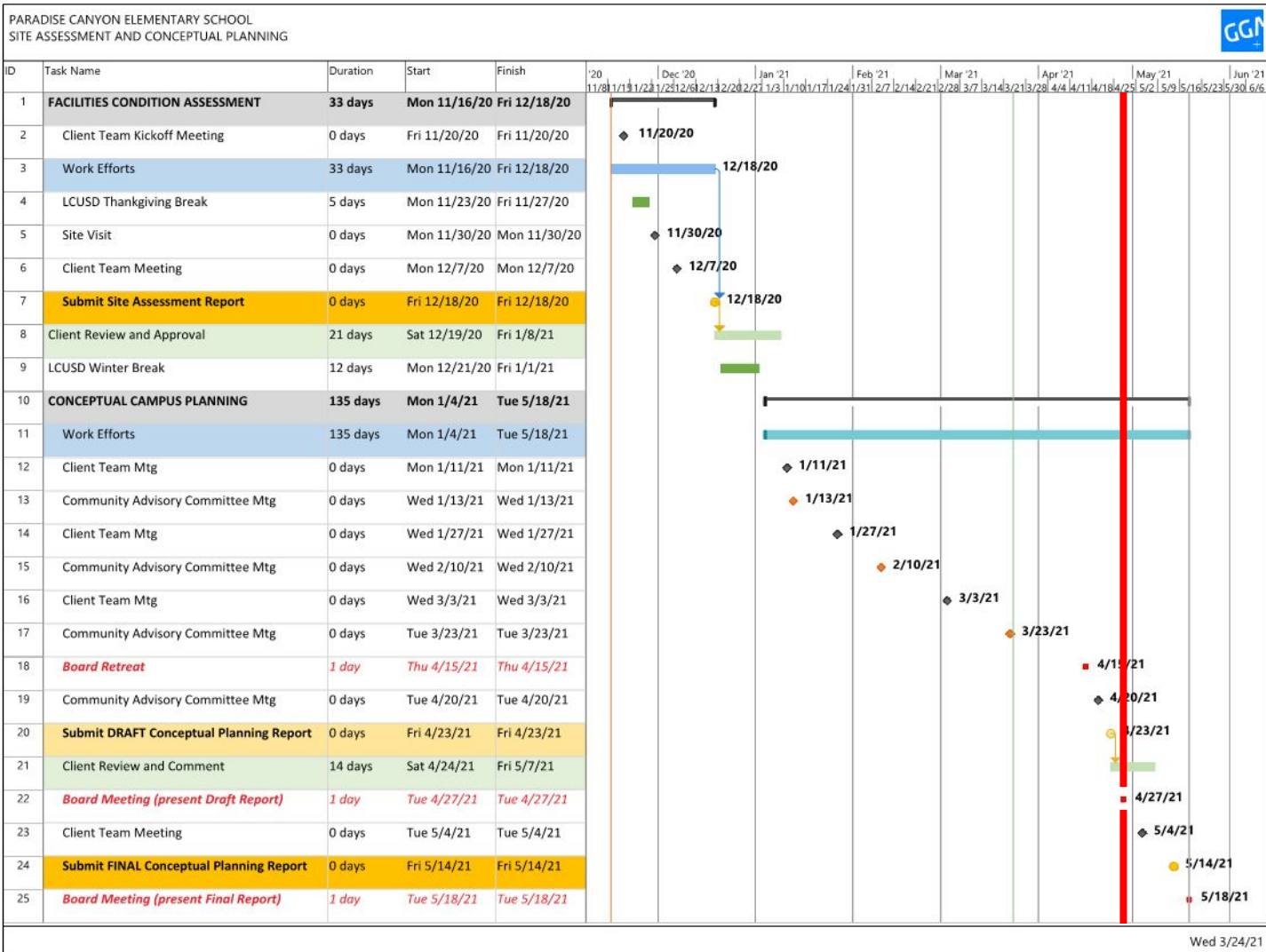
DROP-OFF - OPTION 3



[click here to view animation](#)



NEXT STEPS



CAC
MTGS

1

BOARD
MTGS

2

3

1

4

TODAY → 2

3

La Cañada Unified School District
Paradise Canyon Elementary School

BOARD MEETING #2
APRIL 27, 2021

