

## Defining Infrastructure

Site Development

Fencing & Gates

Building Exterior  
(Watertight)

Roofing Replacement

HVAC Systems Upgrade

Plumbing Upgrade

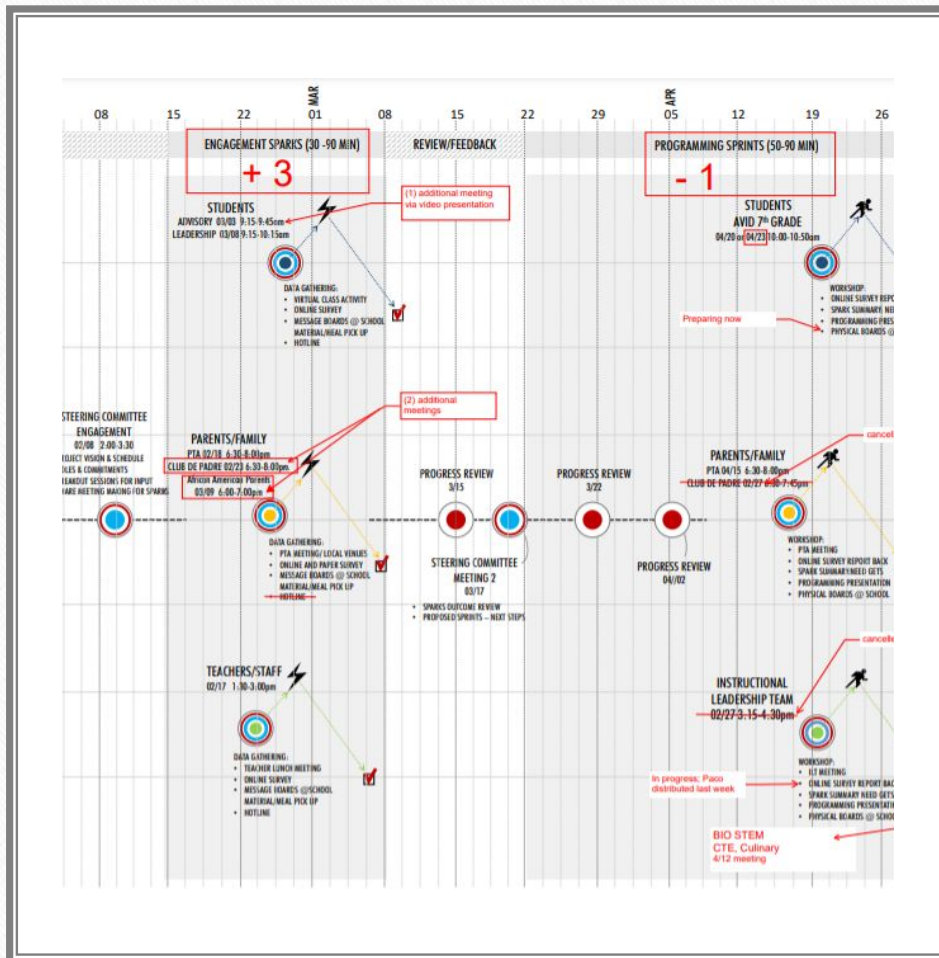
Electrical Upgrade

FA & Communication  
Systems Upgrade

FS System Upgrade



# Longfellow Middle School Engagement



- Five Months of Engagement
- 31 Meetings with Students, Parents, Faculty and Staff
- Six Project Priorities
- Three Grades Served
- One Community



# Longfellow Middle School Priorities

---



- Develop security and identity at front entry
  - Add lockers
  - Improve visual connection between front entry and administration office
  - Safe place for students to wait

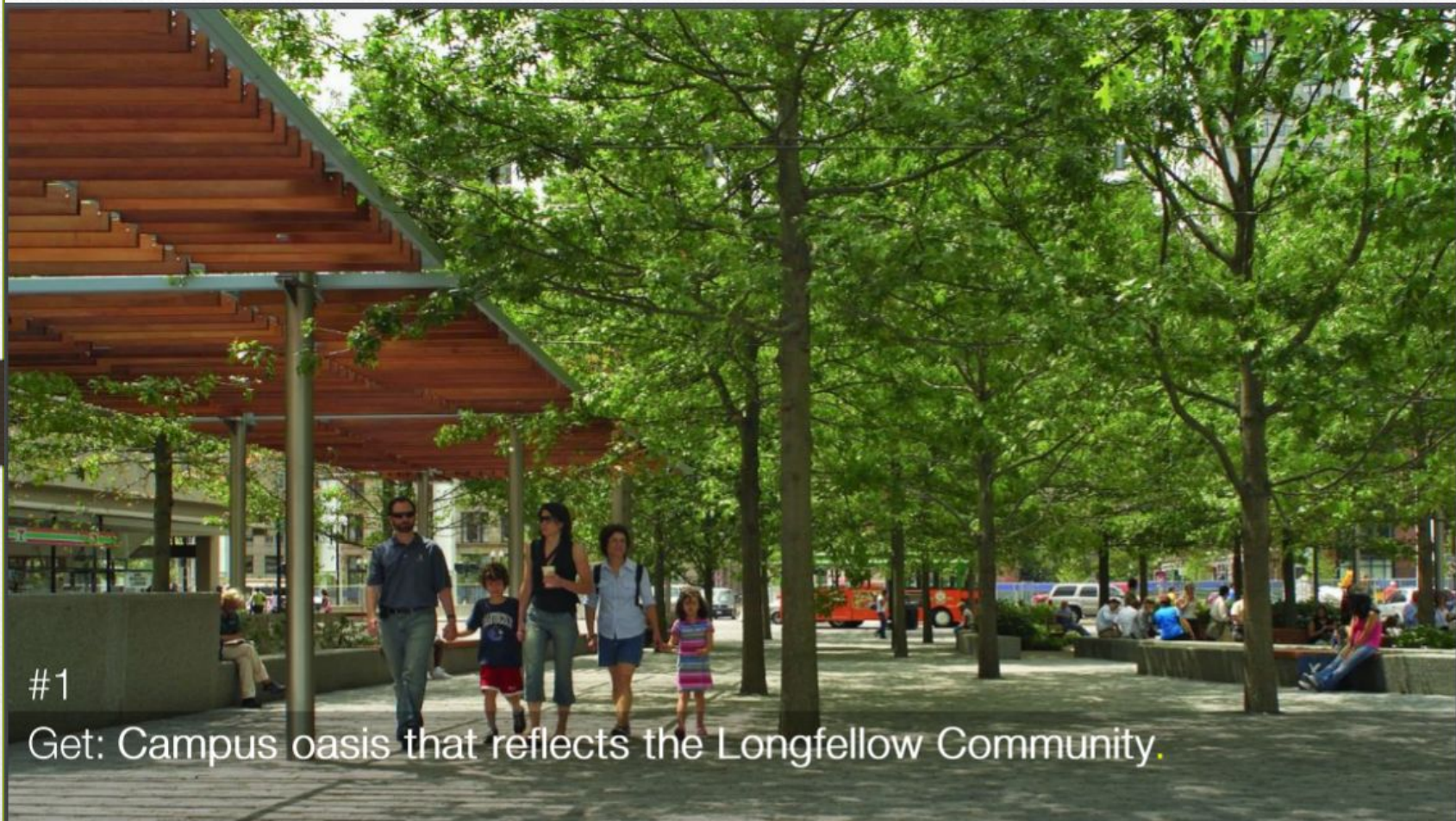
# Longfellow Middle School Priorities

---



- Reconfigure center of campus
  - Provide a variety of gathering spaces
  - Add shade and greenery





#1

Get: Campus oasis that reflects the Longfellow Community.



# Longfellow Middle School Priorities

---



- Create an identity for the school that reflects the diversity of enrollment
  - Add color via painting and murals
  - Soften the edges of campus with greenery





#3

Get: Campus architecture and outdoor learning/ physical education spaces to represent the uniqueness of Longfellow.



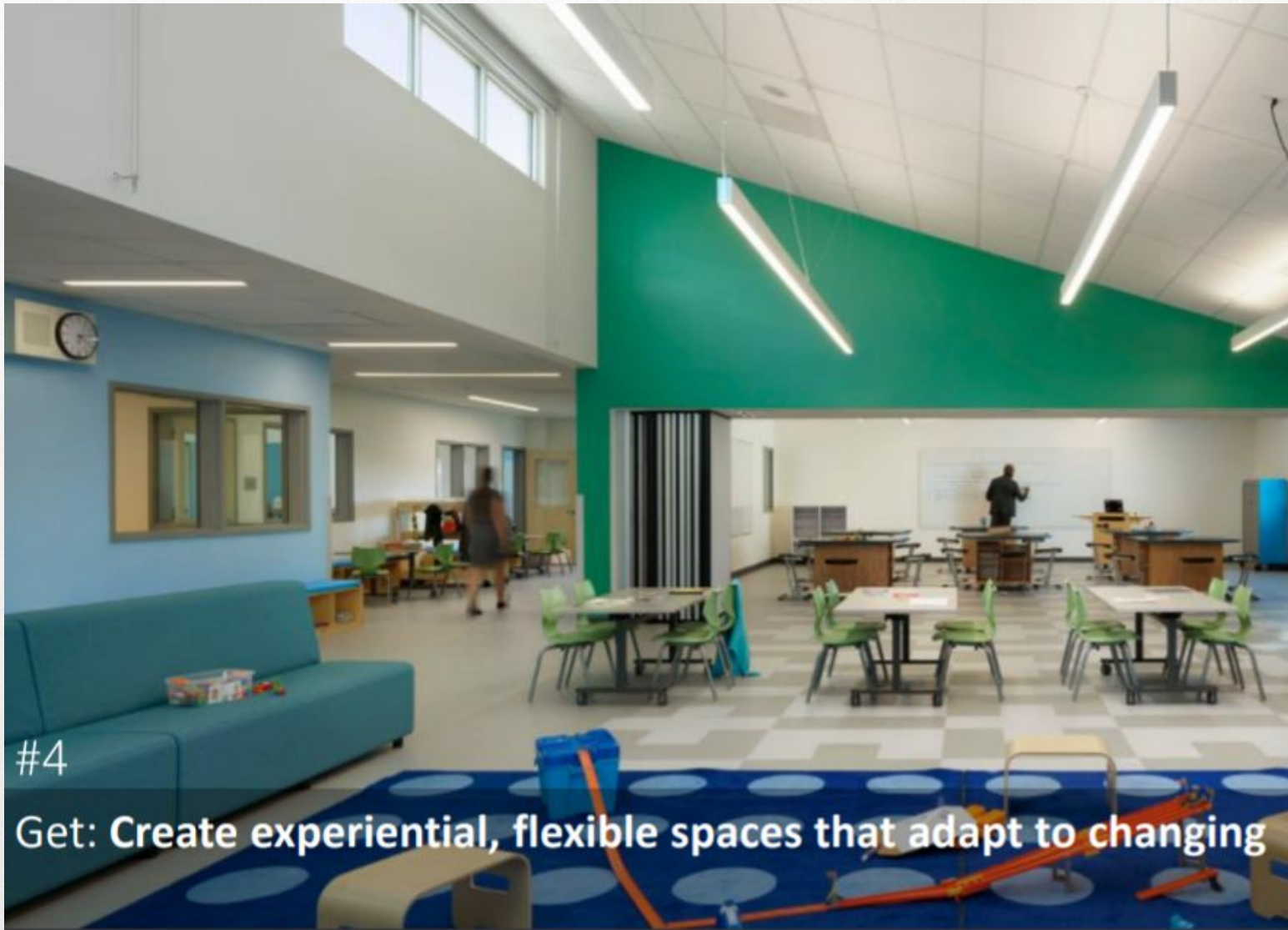
# Longfellow Middle School Priorities

---



- Reconfigure spaces to provide indoor/outdoor connections
  - Provide outdoor learning spaces
  - Connect gardens to classrooms





#4

**Get: Create experiential, flexible spaces that adapt to changing**

# Longfellow Middle School Priorities

---



- Complete deferred maintenance improvements
  - Restrooms
  - Lighting
  - Waterproofing
  - Cooling





#5

Get:

**Healthy, sustainable and well-maintained facilities and buildings that support student learning.**

# Longfellow Middle School Priorities

---



- Reimagine exterior play and exercise areas
  - Create a running track
  - Build a climbing wall
  - Incorporate color into the asphalt areas





#6

**Get: Create multi-use athletic facilities that focus on sports programming at Longfellow and supports community usage.**



# SITE PLAN OPTION 1





## SITE PLAN OPTION 2

