

Elk Grove Unified School District

Introduction to Districting

May 18, 2021

Districting Process

Step	Description
May 4	Adopt Resolution of Intent to change election system. First pre-draft-map hearing held.
May 18	Second pre-draft-map hearing. Direction regarding the communities in the District.
<i>June 8</i>	Maps must be posted at least 7 days prior to 3 rd hearing.
June 15	First hearing to review draft maps and give direction on revisions, if desired.
July 20	Second hearing to review draft maps.
<i>August 3</i>	Final map(s) must be posted at least 7 days prior to adoption.
August 10	Final hearing and map adoption.
TBD	County Committee Hearing and Vote
Early October	California's official Census population data released
By March 1	Adopted map adjusted to reflect new Census data (only 1 hearing required)

Districting Rules and Goals

Federal Laws

- ❑ Equal Population
- ❑ Federal Voting Rights Act
- ❑ No Racial Gerrymandering

Traditional Redistricting Principles

- ❑ Communities of interest
- ❑ Compact
- ❑ Contiguous
- ❑ Visible (Natural & man-made) boundaries
- ❑ Respect voters' choices / continuity in office
- ❑ Planned future growth



Demographic Summary

Each of the seven trustee areas must contain about 44,856 residents.

Elk Grove Unified								
Category	Field	Count	Pct	Category	Field	Count	Pct	
	Total Pop	313,989		ACS Pop. Est.	Total	346,988		
	Estimated Pop	355,000		Age	age0-19	99,205	29%	
Total Pop	Hisp	67,134	21%		age20-60	184,574	53%	
	NH White	103,839	33%		age60plus	63,208	18%	
	NH Black	44,050	14%	Immigration	immigrants	91,722	26%	
	Asian-American	84,191	27%		naturalized	62,169	68%	
Citizen Voting Age Pop	Total	229,441		Language spoken at home	english	194,450	60%	
	Hisp	39,668	17%		spanish	40,338	12%	
	NH White	82,669	36%		asian-lang	59,638	18%	
	NH Black	32,954	14%		other lang	30,030	9%	
	Asian/Pac.Isl.	69,287	30%	Language Fluency	Speaks Eng. "Less than Very Well"	56,333	17%	
Voter Registration (Nov 2020)	Total	203,218		Education (among those age 25+)	hs-grad	128,974	57%	
	Latino est.	39,427	19%		bachelor	46,687	21%	
	Spanish-Surnamed	35,418	17%		graduatedegree	19,841	9%	
	Asian-Surnamed	32,552	16%	Child in Household	child-under18	28,759	27%	
	Filipino-Surnamed	6,683	3%	Pct of Pop. Age 16+	employed	154,542	58%	
	NH White est.	87,329	43%	Household Income	income 0-25k	15,140	14%	
	NH Black	36,816	18%		income 25-50k	17,378	16%	
Voter Turnout (Nov 2020)	Total	163,201			income 50-75k	17,569	17%	
	Latino est.	30,774	19%		income 75-200k	47,345	45%	
	Spanish-Surnamed	27,645	17%		income 200k-plus	8,793	8%	
	Asian-Surnamed	25,126	15%	Housing Stats	single family	96,694	88%	
	Filipino-Surnamed	5,387	3%		multi-family	13,462	12%	
	NH White est.	72,604	44%		rented	32,685	31%	
	NH Black	28,858	18%		owned	73,541	69%	
Voter Turnout (Nov 2018)	Total	108,304		Total population data from the 2010 Decennial Census. Surname-based Voter Registration and Turnout data from the California Statewide Database. Latino voter registration and turnout data are Spanish-surname counts adjusted using Census Population Department undercount estimates. NH White and NH Black registration and turnout counts estimated by NDC. Citizen Voting Age Population from the 2015-2019 American Community Survey and Special Tabulation 5-year data. Age, Immigration, and other demographics from the 2015-2019 American Community Survey				
	Latino est.	19,109	18%					
	Spanish-Surnamed	17,166	16%					
	Asian-Surnamed	12,785	12%					
	Filipino-Surnamed	2,956	3%					
	NH White est.	57,133	53%					
	NH Black est.	18,577	17%					

Elk Grove USD - Current Trustee Areas

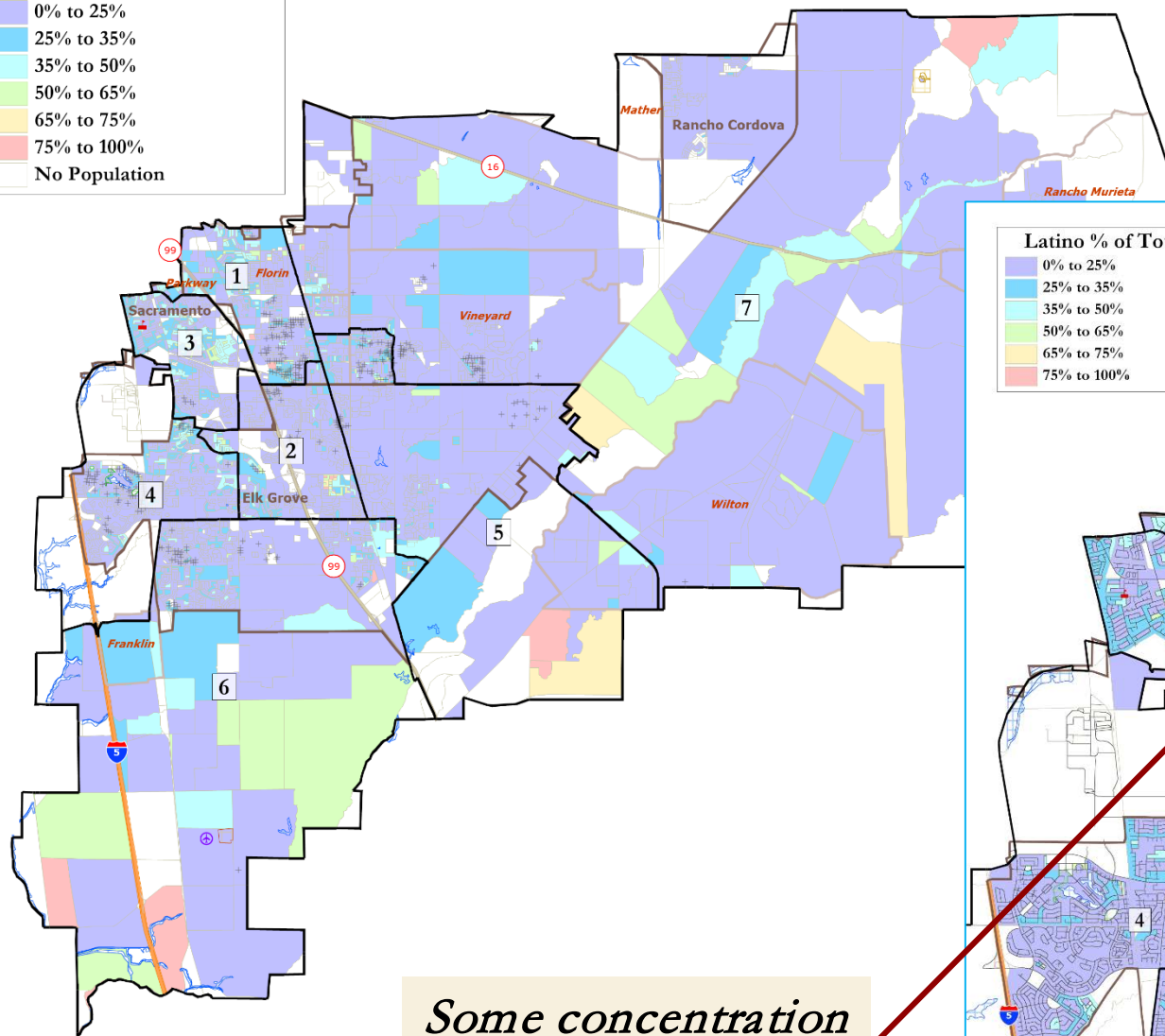
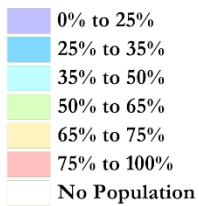
District		1	2	3	4	5	6	7	Total
	Total Pop (2010)	44,376	44,915	45,212	45,201	44,622	44,898	44,765	313,989
	Est. Pop. (2020)	44,000	48,000	49,000	48,000	47,000	56,000	62,000	355,000
Estimated Deviations (2020)	Deviation from ideal	-6,000	-2,000	-1,000	-2,000	-4,000	5,000	11,000	17,000
	% Deviation	-13%	-5%	-3%	-5%	-8%	10%	22%	35%
Total Pop (2010 Census)	% Hisp	28%	19%	31%	18%	18%	19%	16%	21%
	% NH White	20%	34%	14%	40%	41%	36%	48%	33%
	% NH Black	17%	12%	25%	13%	11%	12%	8%	14%
	% Asian-American	30%	30%	23%	25%	26%	29%	24%	27%
Citizen Voting Age Pop (2015-2019 Special Tab)	Total	26,802	32,881	29,413	33,036	32,936	37,345	37,028	229,441
	% Hisp	21%	17%	21%	18%	15%	16%	14%	17%
	% NH White	24%	35%	19%	40%	42%	38%	48%	36%
	% NH Black	15%	14%	26%	14%	11%	13%	9%	14%
	% Asian/Pac Isl.	37%	32%	30%	27%	30%	31%	27%	30%
Voter Registration (Nov 2020)	Total	21,796	29,363	22,754	30,181	29,803	33,147	36,174	203,218
	% Spanish-Surnamed	24%	19%	26%	19%	17%	19%	15%	19%
	% Asian-Surnamed	18%	18%	12%	14%	18%	17%	14%	16%
	% Filipino-Surnamed	2%	4%	3%	3%	3%	5%	2%	3%
	% NH White est.	32%	39%	24%	47%	49%	43%	56%	43%
	% NH Black	25%	19%	36%	17%	13%	13%	12%	18%
Voter Turnout (Nov 2020)	Total	15,210	23,761	16,210	25,551	24,504	27,687	30,278	163,201
	% Spanish-Surnamed	24%	19%	26%	18%	17%	19%	14%	19%
	% Asian-Surnamed	17%	17%	12%	14%	17%	17%	13%	15%
	% Filipino-Surnamed	3%	4%	3%	3%	3%	5%	2%	3%
	% NH White est.	32%	40%	24%	48%	50%	44%	58%	44%
	% NH Black	25%	19%	36%	17%	13%	13%	12%	18%
Voter Turnout (Nov 2018)	Total	9,463	15,721	9,845	18,243	16,551	17,977	20,503	108,304
	% Spanish-Surnamed	22%	16%	22%	15%	15%	16%	12%	16%
	% Asian-Surnamed	13%	13%	10%	12%	13%	13%	9%	12%
	% Filipino-Surnamed	2%	3%	3%	3%	3%	4%	2%	3%
	% NH White est.	37%	52%	27%	55%	60%	52%	66%	53%
	% NH Black est.	26%	17%	38%	16%	12%	15%	10%	17%

Elk Grove USD - Current Trustee Areas

District		1	2	3	4	5	6	7	Total
ACS Pop. Est.	Total	44,960	49,044	49,354	48,032	46,945	55,515	53,137	346,988
Age	age0-19	30%	28%	30%	28%	28%	30%	27%	29%
	age20-60	51%	54%	53%	53%	55%	52%	53%	53%
	age60plus	19%	18%	16%	19%	17%	18%	20%	18%
Immigration	immigrants	33%	27%	31%	23%	26%	25%	22%	26%
	naturalized	58%	73%	59%	70%	74%	72%	73%	68%
Language spoken at home	english	45%	62%	48%	67%	63%	64%	67%	60%
	spanish	22%	9%	21%	10%	9%	9%	9%	12%
	asian-lang	25%	18%	22%	16%	15%	17%	16%	18%
	other lang	8%	11%	9%	7%	13%	9%	8%	9%
Language Fluency	Speaks Eng. "Less than Very Well"	28%	16%	25%	12%	15%	13%	14%	17%
Education (among those age 25+)	hs-grad	62%	58%	63%	50%	57%	53%	57%	57%
	bachelor	10%	22%	12%	27%	23%	26%	22%	21%
	graduatedegree	3%	7%	4%	15%	8%	11%	11%	9%
Child in Household	child-under18	18%	24%	24%	29%	30%	35%	28%	27%
Pct of Pop. Age 16+	employed	50%	59%	57%	61%	59%	59%	59%	58%
Household Income	income 0-25k	28%	13%	20%	10%	11%	10%	11%	14%
	income 25-50k	25%	16%	26%	11%	13%	12%	14%	16%
	income 50-75k	19%	17%	21%	16%	15%	14%	13%	17%
	income 75-200k	26%	47%	32%	52%	50%	53%	49%	45%
	income 200k-plus	2%	7%	2%	10%	11%	11%	12%	8%
Housing Stats	single family	81%	86%	76%	88%	94%	93%	94%	88%
	multi-family	19%	14%	24%	12%	6%	7%	6%	12%
	rented	44%	31%	50%	26%	23%	23%	21%	31%
	owned	56%	69%	50%	74%	77%	77%	79%	69%

Total population data from the 2010 Decennial Census. Surname-based Voter Registration and Turnout data from the California Statewide Database. Latino voter registration and turnout data are Spanish-surname counts. Citizen Voting Age Pop., Age, Immigration, and other demographics from the 2015-2019 American Community Survey and Special Tabulation 5-year data.

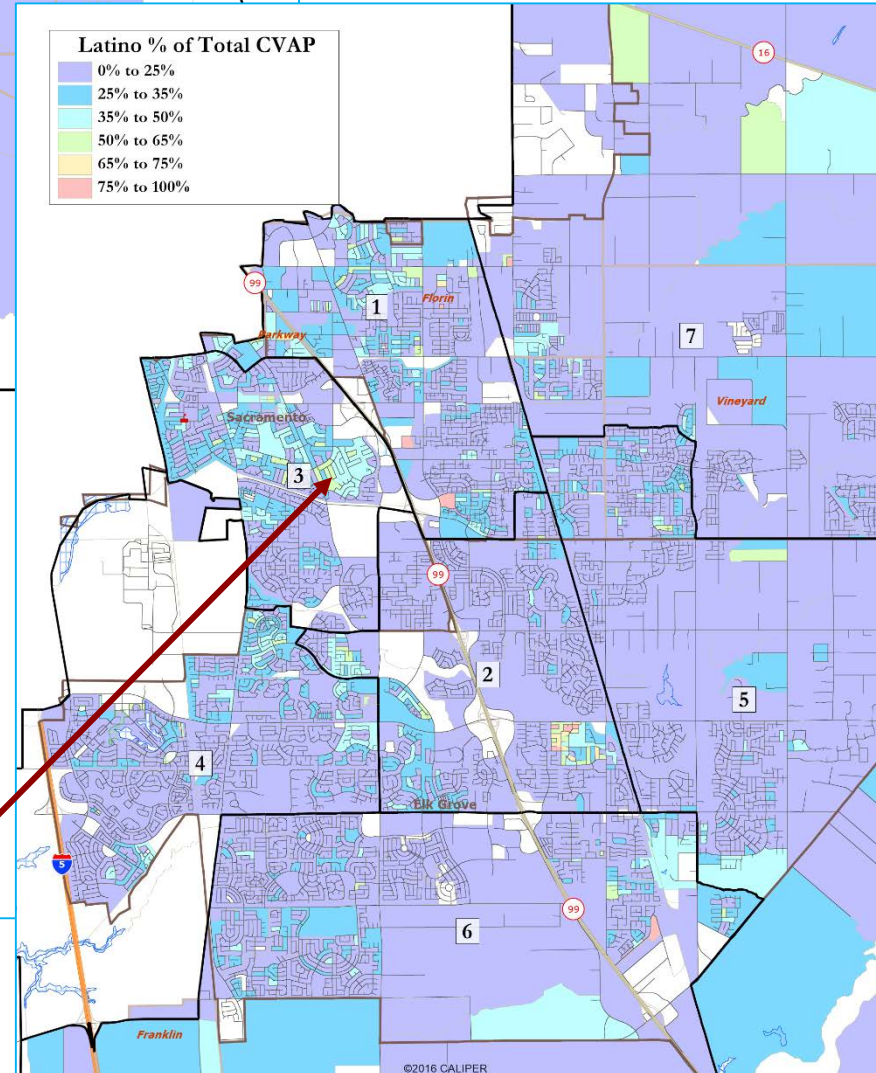
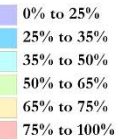
Latino % of Total CVAP



*Some concentration
in Sacramento*

Latino CVAP

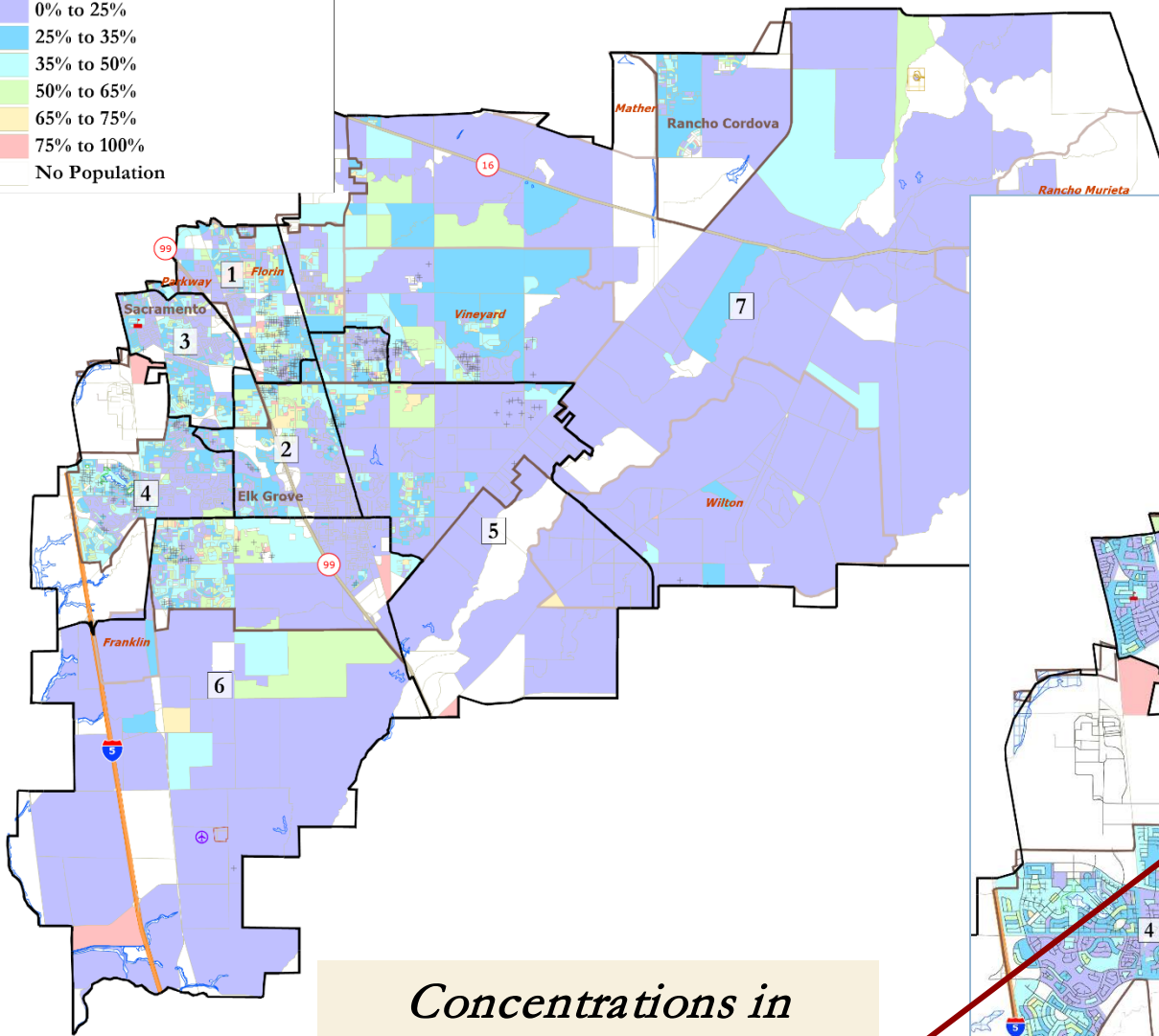
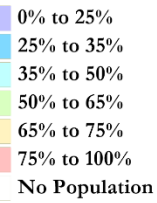
Latino % of Total CVAP



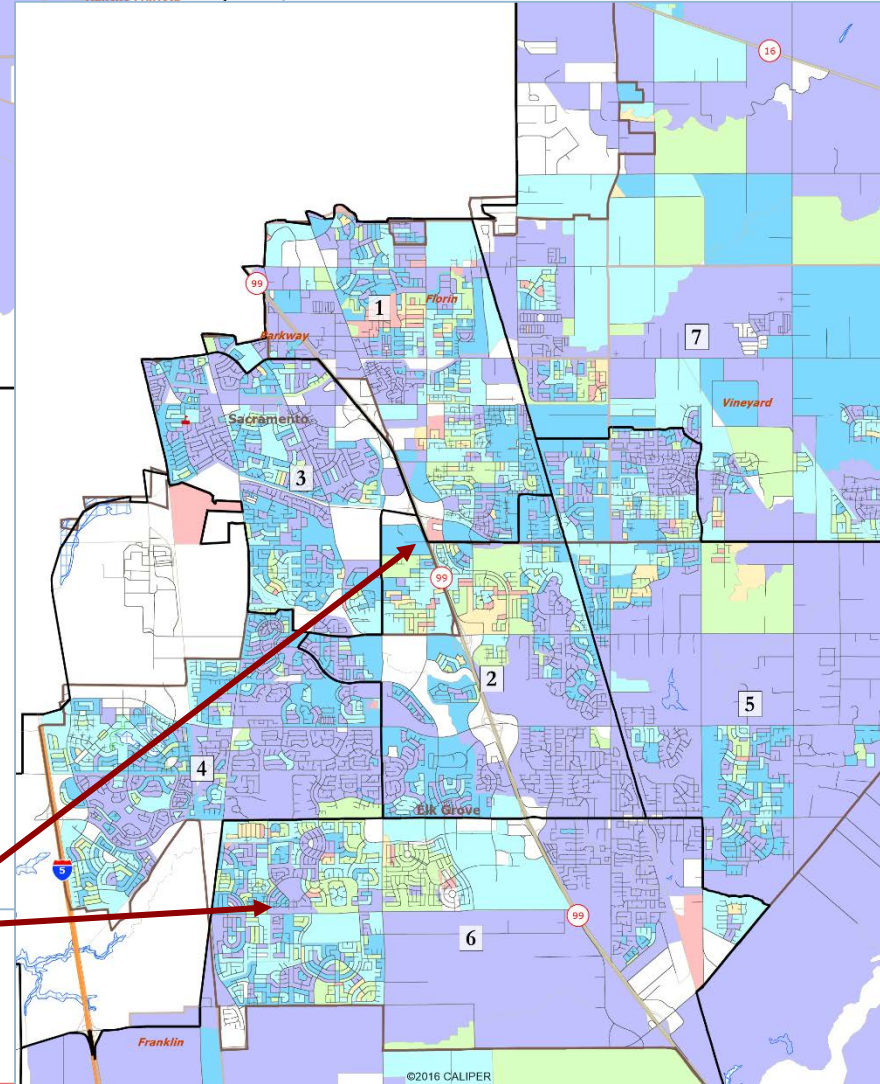
©2016 CALIPER

Asian-American CVAP

Asian-Amer. % of Tot. CVAP

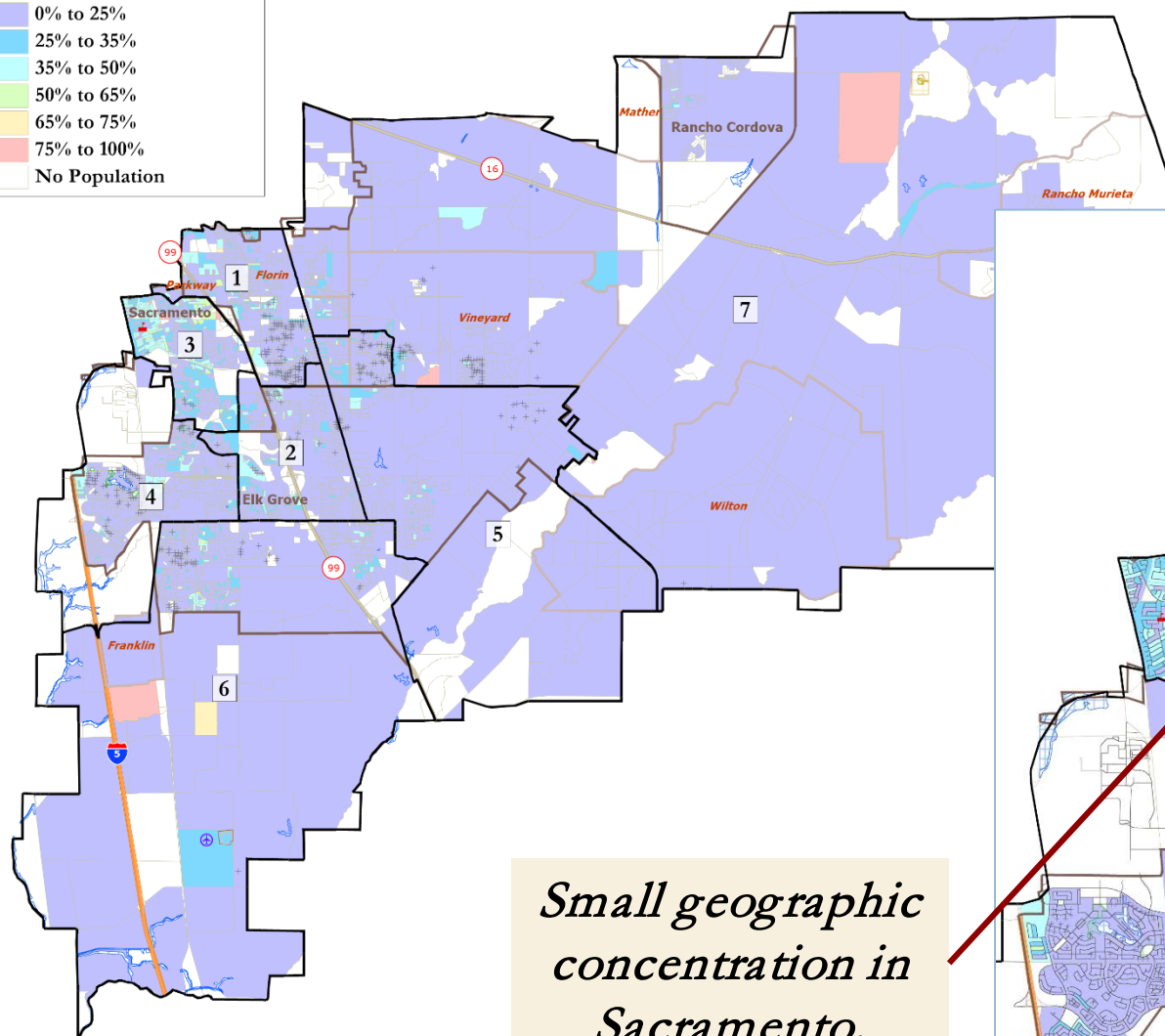
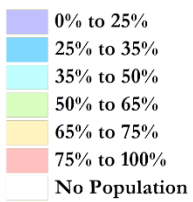


*Concentrations in
southern Elk Grove and
just east of Sacramento.*

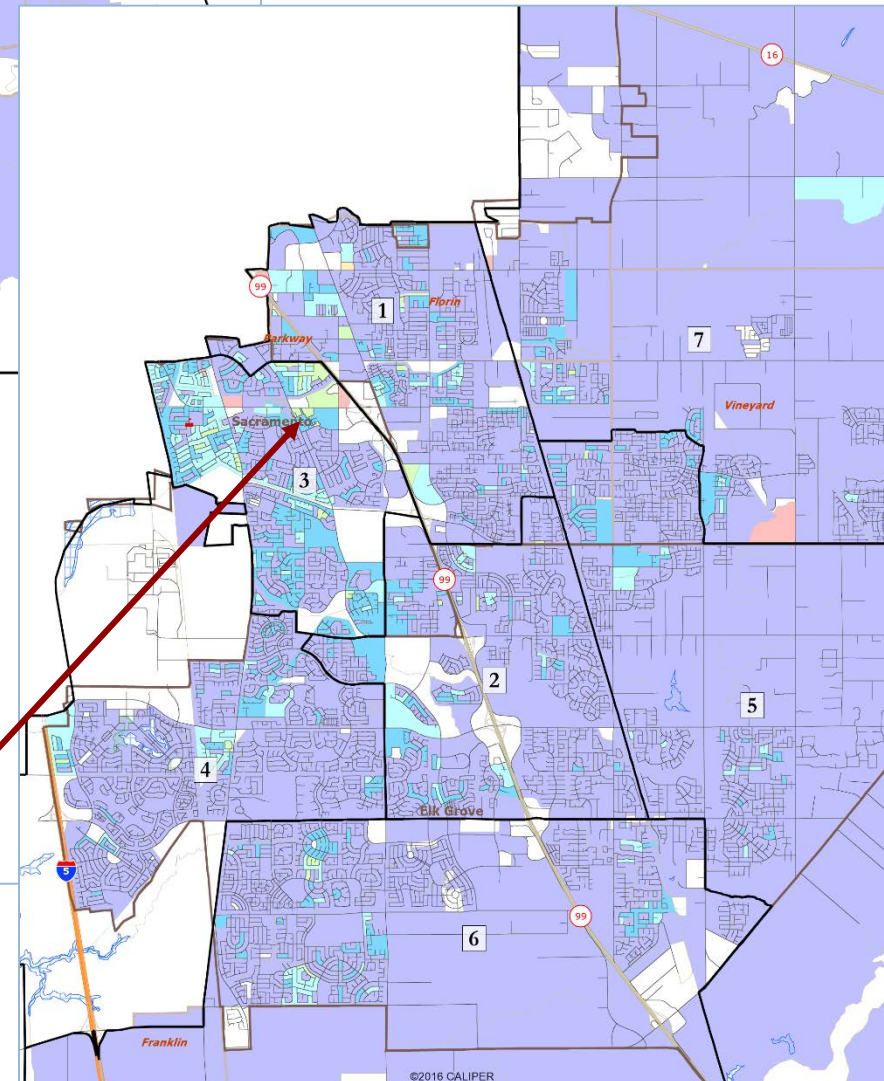


Black CVAP

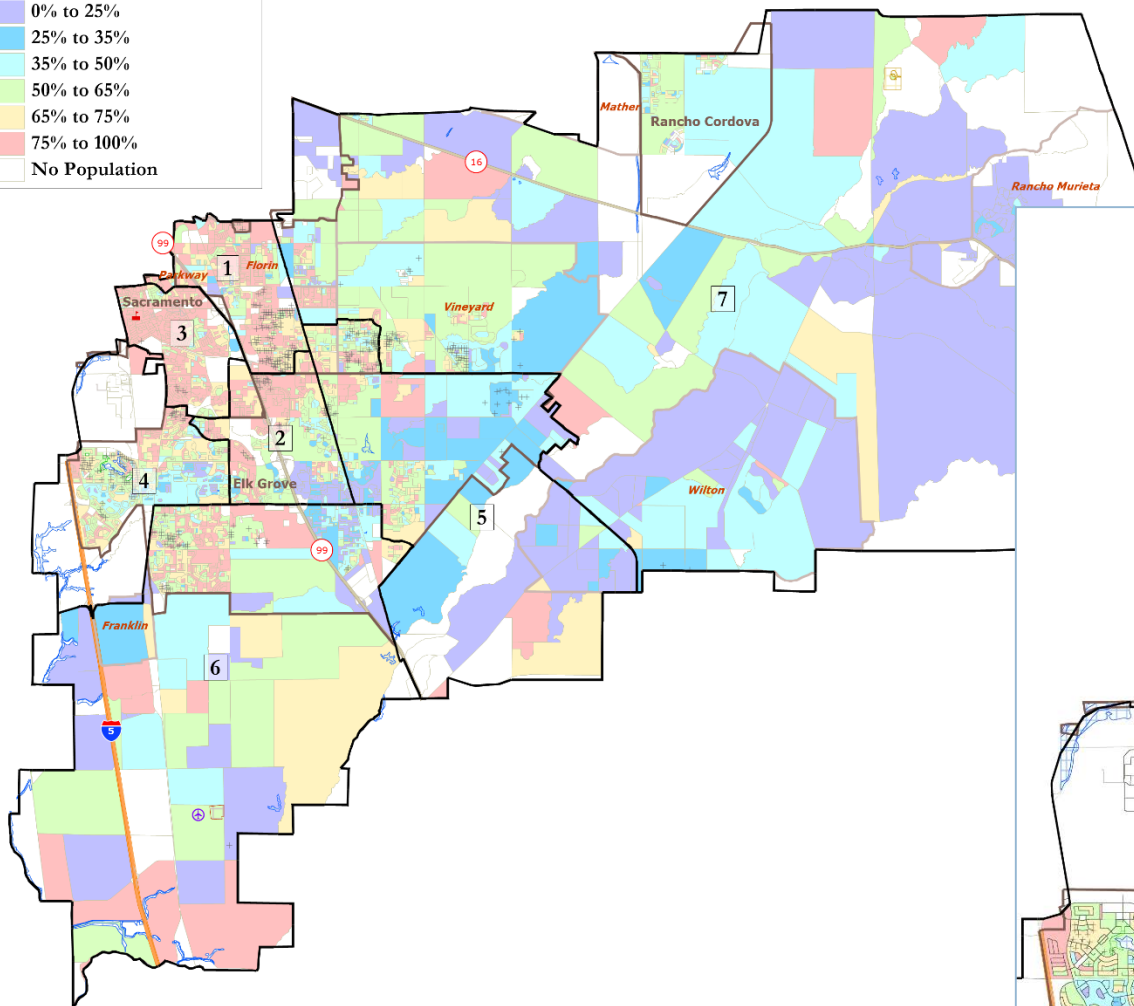
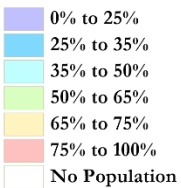
Black % of Tot. CVAP



Small geographic concentration in Sacramento.

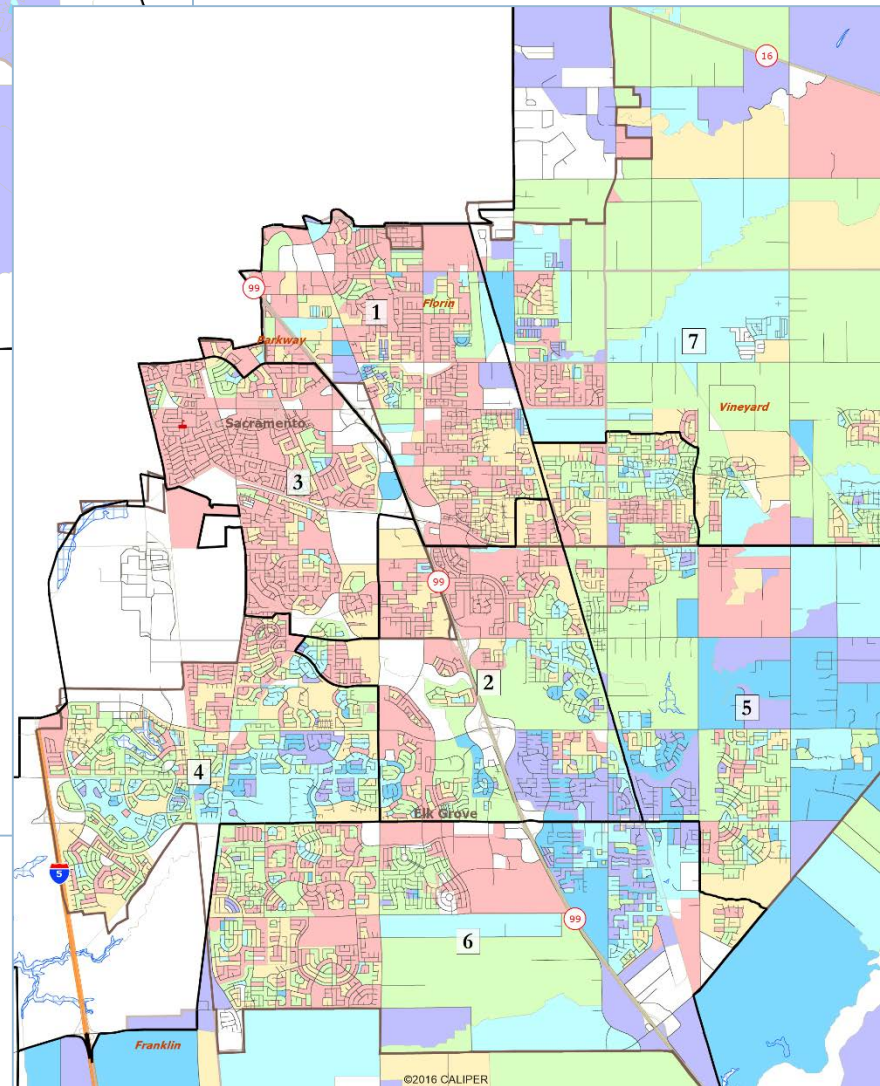


Non-White % of CVAP



©2016 CALIPER

Total Non-White CVAP



©2016 CALIPER

Defining Communities of Interest

1st Question: what is your neighborhood?

2nd Question: what are its geographic boundaries?

A Community of Interest is generally defined as a neighborhood or community of shared interests, views, problems, or characteristics.

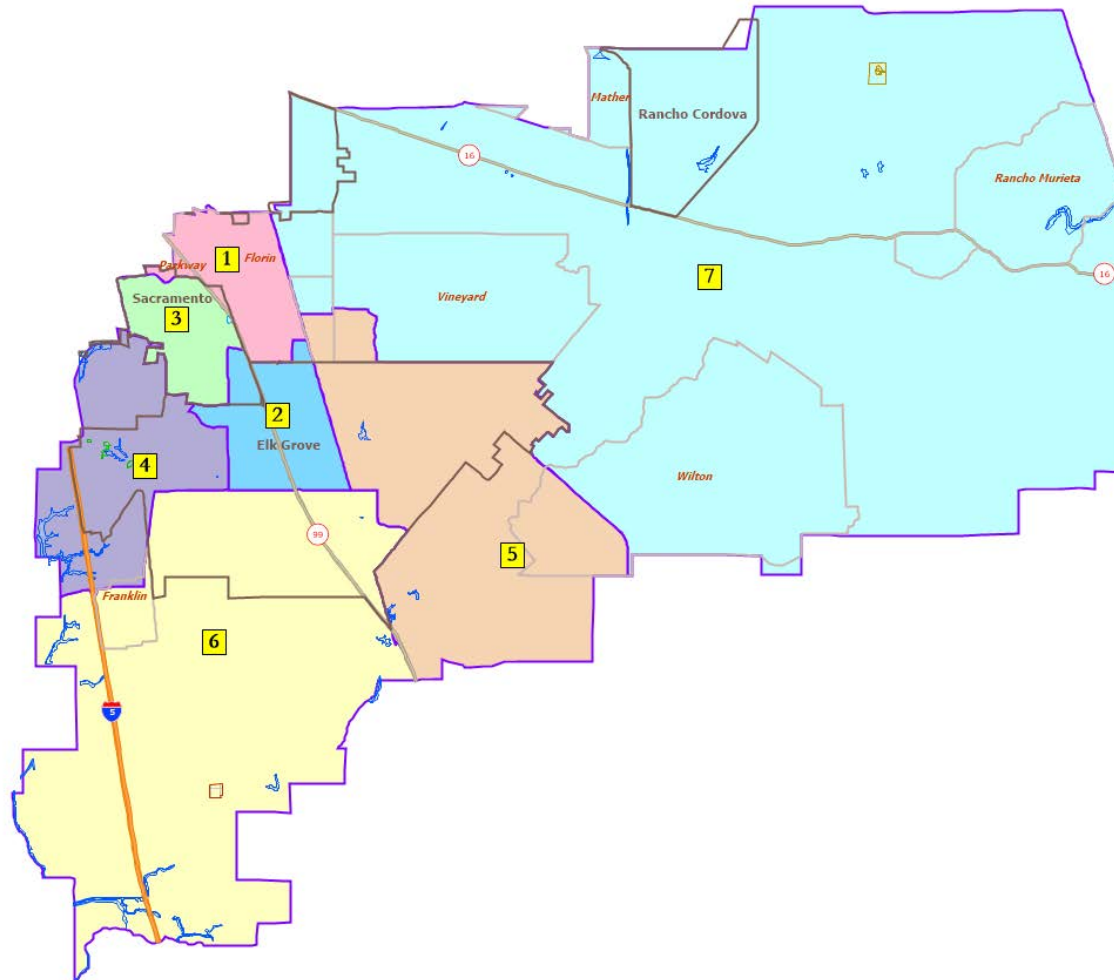
- ❑ School attendance areas
- ❑ Natural neighborhood dividing lines, such as highway or major roads, rivers, canals, and/or hills
- ❑ Areas around parks and other neighborhood landmarks
- ❑ Common issues, neighborhood activities, or legislative/election concerns
- ❑ Shared demographic characteristics
 - ▣ Such as similar levels of income, education, or linguistic isolation

In the absence of public testimony, planning records and other similar documents may provide definition.



Existing Trustee Areas

Any community of interest concerns in the existing trustee area map?



Public Hearing & Discussion

1. What geographic communities are in the District, and what are their boundaries?
 - ▣ Which would benefit from being kept together in one district?
 - ▣ Which would benefit from multiple representatives?