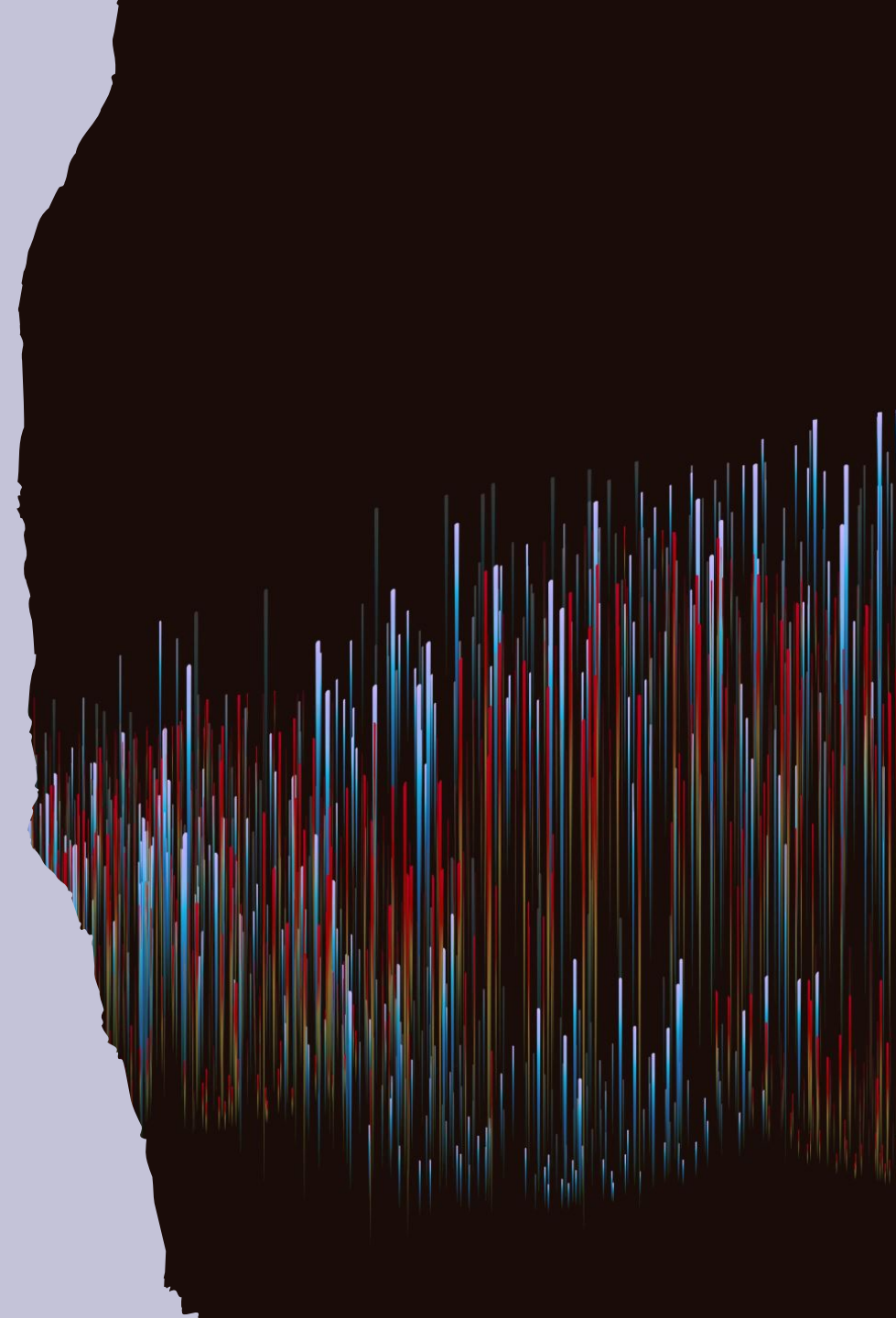


MEASURE X UPDATE

Board of Trustees

June 10, 2021



MEASURE X OVERVIEW

- Measure X Bond Measure approved by the voters in November 2015
- \$148m. for facilities for increased/increasing enrollments
- Phase I—planning began in 2016 for 4 projects
- Phase II—planning began in 2020 for 4 additional projects

MEASURE X PHASE I

Bayside Academy--new gym and locker rooms

Abbott MS—new gym and locker rooms and additional classrooms

Borel MS—new gym and locker rooms and additional classrooms

New elementary school in Foster City for 400-420 students

BAYSIDE GYM AND LOCKER ROOMS

Planning Team

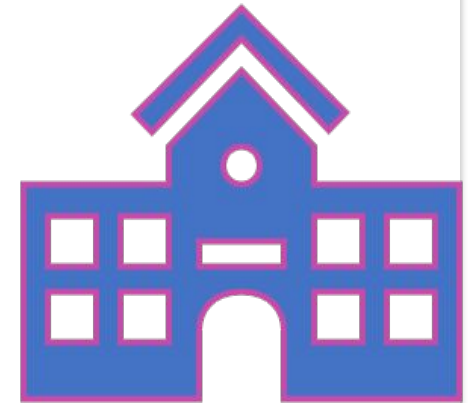
- School Team of parent and staff leaders
- John Cosmos, Principal and Megan Gurka, Assistant Principal
- District Facilities Team

Architect: QKA

General Contractor: Rodan

SMFCSD Construction Project Manager: Kevin Sanders

Total budget—construction and soft costs:
\$14,464,024





BAYSIDE GYM AND LOCKER ROOMS
EXTERIOR

BAYSIDE LOCKER ROOMS AND GYM FROM
SCHOOL LOOKING NORTH





BAYSIDE GYM INTERIOR

BAYSIDE GYM AND LOCKER ROOMS: STATUS

- COMPLETED, ready for use
- Total budget—construction and soft costs:
\$14,464,924

ABBOTT CLASSROOMS, GYM AND LOCKER ROOMS

- 6 additional classrooms
 - 2 new on top of the locker rooms
 - 4 created from existing spaces/conversion
- New gym and locker rooms
- Planning Team
 - School Team of parent leaders, previous administration, and staff with later assistance from Jeremy Packman, Principal, and Walter Valencia, Assistant Principal
 - District Facilities Team
- Architect: CAW
- General Contractor: Rodan
- SMFCSD Construction Project Manager: Mark Sherrill





ABBOTT EXTERIORS

ABBOTT GYM INTERIOR





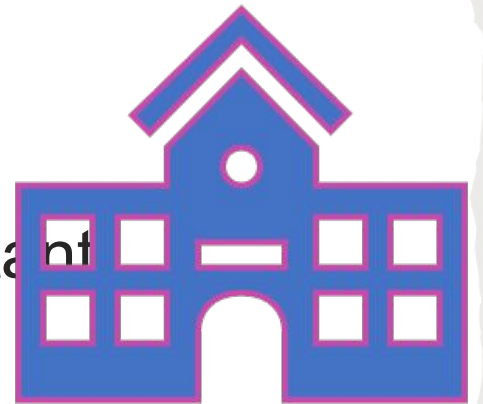
ABBOTT INTERIOR WITH
BLEACHERS OPEN

ABBOTT CLASSROOMS, GYM AND LOCKER ROOMS: STATUS

- Classrooms COMPLETED, ready for use August 2020
- Gym and Locker Rooms COMPLETED March 2021
- Total budget—construction and soft costs: \$22,924,251

BOREL CLASSROOMS, GYM AND LOCKER ROOMS

- 8 additional classrooms
 - 6 new
 - 2 created from existing spaces/conversion
- New gym and locker rooms
- Planning Team
 - School Team of parent and staff leaders
 - Kenyetta Cook, Principal, and Jessica Notte, Assistant Principal
 - District Facilities Team
- Architect: CSDA
- General Contractors: Rodan and Beals Martin
- SMFCSD Construction Project Manager: Bob Price





GYMNASIUM

BOREL EXTERIOR—
GYM AND LOCKER ROOMS



BOREL GYM INTERIOR

BOREL LOCKER ROOM





BOREL CLASSROOM WINGS
LOOKING TOWARD GYM

BOREL CLASSROOMS, GYM AND LOCKER ROOMS: STATUS

- Classrooms: 1 conversion in 2018; 6 COMPLETED, ready for use August 2020; one classroom renovation underway Summer 2021
- Gym and Locker Rooms COMPLETED March 2021
- Total budget—construction and soft costs:
\$26,379,430

NEW SCHOOL IN FOSTER CITY—BEACH PARK ELEMENTARY SCHOOL

- 17 classrooms built around collaboration areas, multipurpose room, library/resource center, 1 classroom for the Children's Annex program, administration building, outdoor play areas and learning nodes
- Planning Team
 - Original Team: parent leaders, administrators & staff from existing FC schools
 - Finishing: Amy Snow, Beach Park School Principal, and staff
 - District Facilities Team and Student Services and Ed Services staff members
- Architect: HMC
- General Contractors: Overaa
- SMFCSD Construction Project Manager: Kevin Sanders





Beach Park Elementary School
San Mateo-Foster City School District
1058 Shell Boulevard

BEACH PARK SCHOOL LOOKING NORTH FROM
ADMINISTRATION BUILDING ALONG SHELL BLVD.



BEACH PARK ELEMENTARY SCHOOL ADMINISTRATION
BUILDING

BEACH PARK SCHOOL CLASSROOM





BEACH PARK LIBRARY

BEACH PARK SCHOOL: STATUS

- **COMPLETED** May 2021; opened to students and staff May 10, 2021
- Total budget—purchase of site, construction and soft costs: \$75,918,830 (Measure L, X and other sources)

MEASURE X PHASE II: OVERVIEW

New Elementary School in
North Central San Mateo

New Science and Drama
Buildings at Bowditch MS

New Multipurpose Building and
additional classrooms at
Sunnybrae and George Hall
Schools

NEW ELEMENTARY SCHOOL IN NORTH CENTRAL SAN MATEO

- Recommendations for North Central School Vision and Program planned for June 10 from independent educational consultancy firm
- Start of school facility planning aligned with school vision and program projected to begin in second half of 2021 after Board direction
- Original Budget (250 student school): \$23 million

BOWDITCH PROJECT

MAJOR ELEMENTS:
NEW SCIENCE AND
DRAMA BUILDINGS

ARCHITECT: HED

TOTAL PROJECT
BUDGET: \$19.5M

BOWDITCH EXTERIORS: DRAMA AND SCIENCE BUILDINGS



Phase I:
New Science and Drama/Restroom Buildings

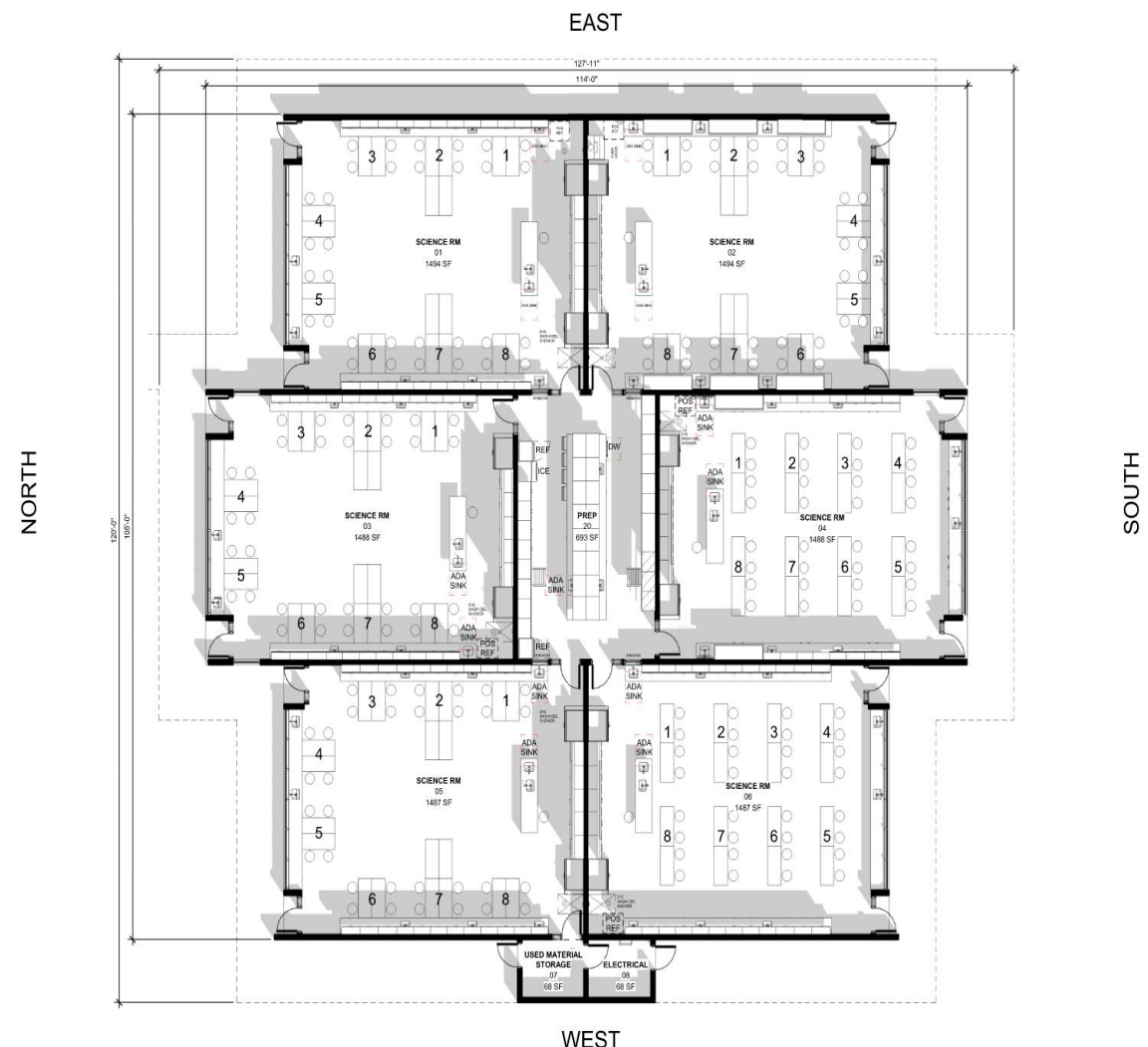
- MEASURE X BUILD
- MEASURE X RENOVATE
- MEASURE T BUILD
- MEASURE T RENOVATE
- COURTYARD SITE WORK

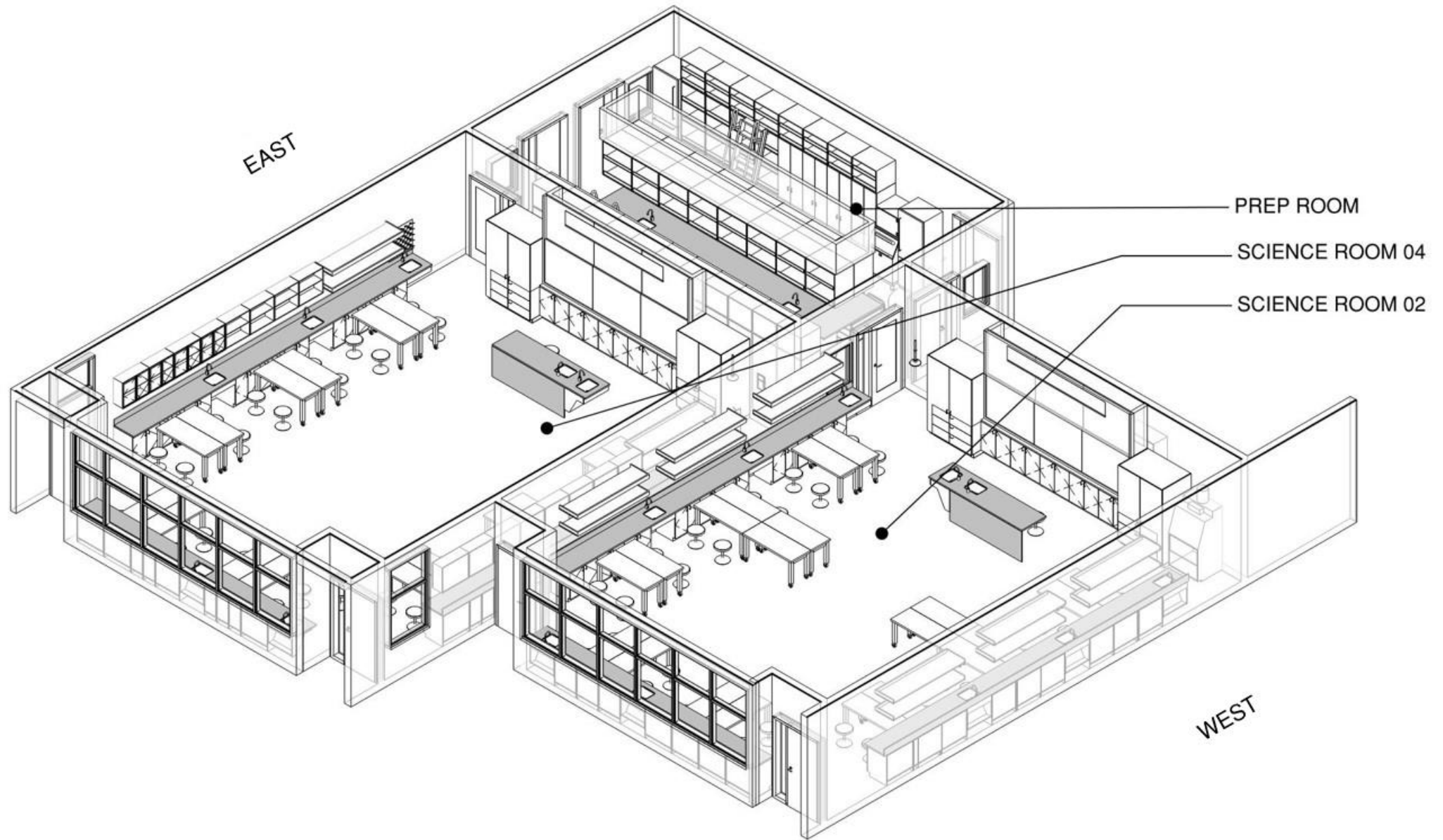
BUILDING EXTERIORS



BOWDITCH MIDDLE SCHOOL
CENTER CLASSROOMS CLERESTORY MONITORS
4 NOVEMBER, 2020

NEW SCIENCE BUILDING INTERIOR





NEW DRAMA BUILDING INTERIOR

HED



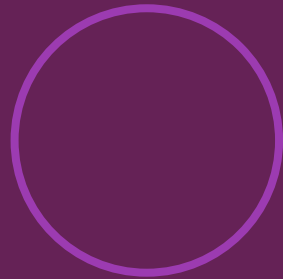
CURRENT PROJECTED TIMELINE—BOWDITCH NEW SCIENCE AND DRAMA BUILDINGS



Technical
Studies, Location
and Schematic
Design Phase

DONE

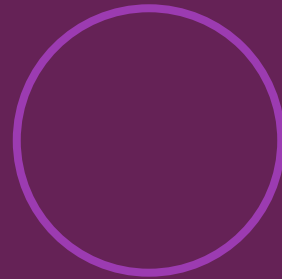
Summer 2020-
Spring 2021



Construction
Documentation
and
Specifications
Phase

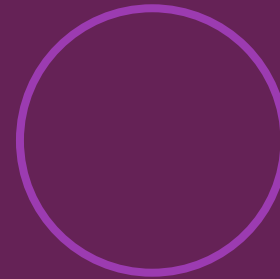
ALMOST DONE

Summer 2021



Division of State
Architect Review
and Approval

Summer
2021-Winter
2022



Public Bidding
Phase and
Award of
Contract to
General
Contractor

Spring 2022



Site Mobilization
and Construction

Summer 2022-
end of 2023

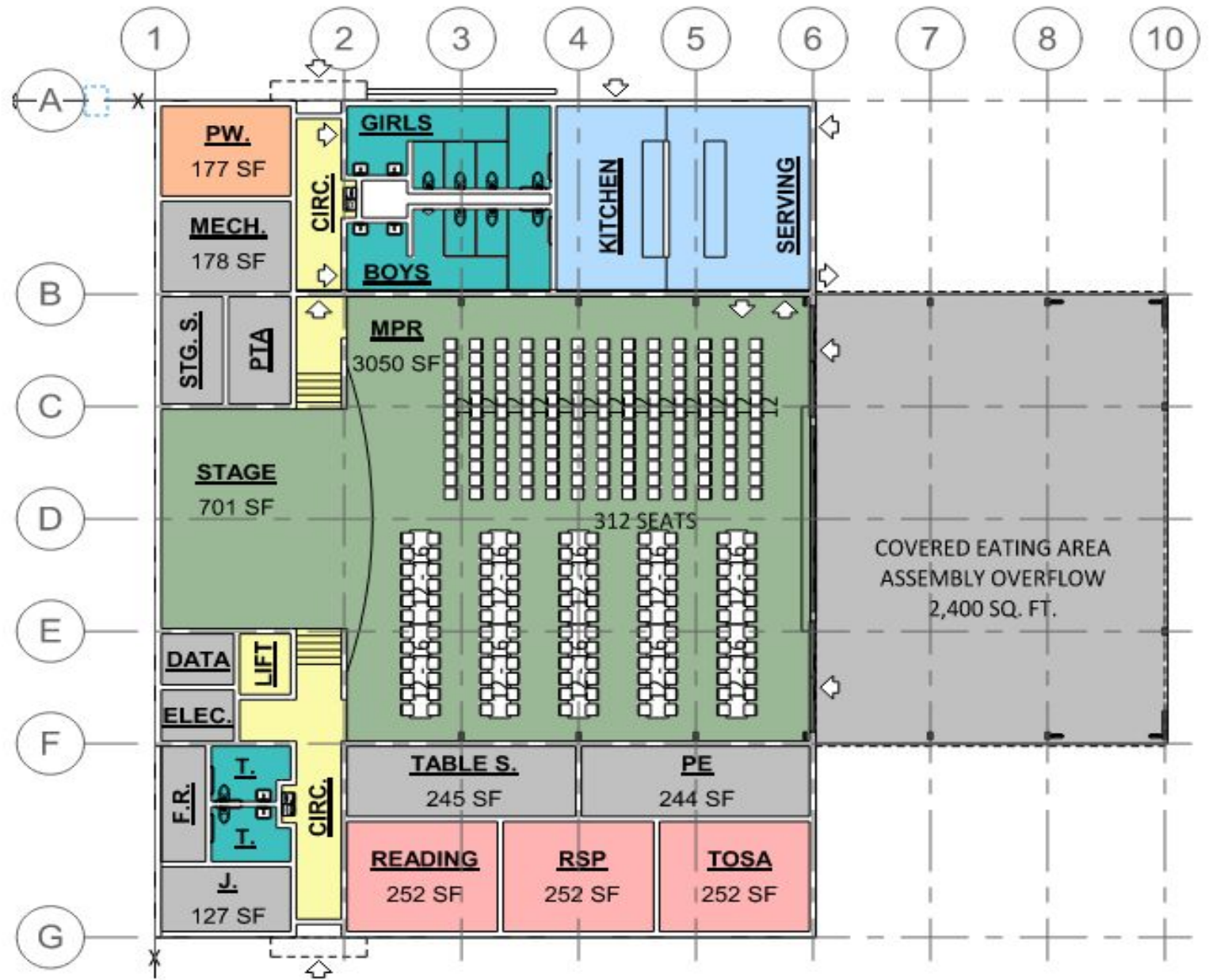
SUNNYBRAE AND GEORGE HALL PROJECTS

- District Standards with unique designs for each school
 - Scope: Large assembly area with stage
 - Small instructional rooms/offices to free up classrooms for enrollment growth
 - Kitchen and serving room (servery)
 - Restrooms and storage areas
 - Custodial Room
 - Relocation of classrooms (GH) and play structures (both)
 - Landscaping
 - Lunch shade structure (Sunnybrae) and courtyard (GH)
- Total Budget: \$11.6 million each

SUNNYBRAE
CAMPUS
WITH NEW
MULTI-PURPOS
E BUILDING:
LOCATION



SUNNYBRAE MULTI-PURPOSE BUILDING PLAN

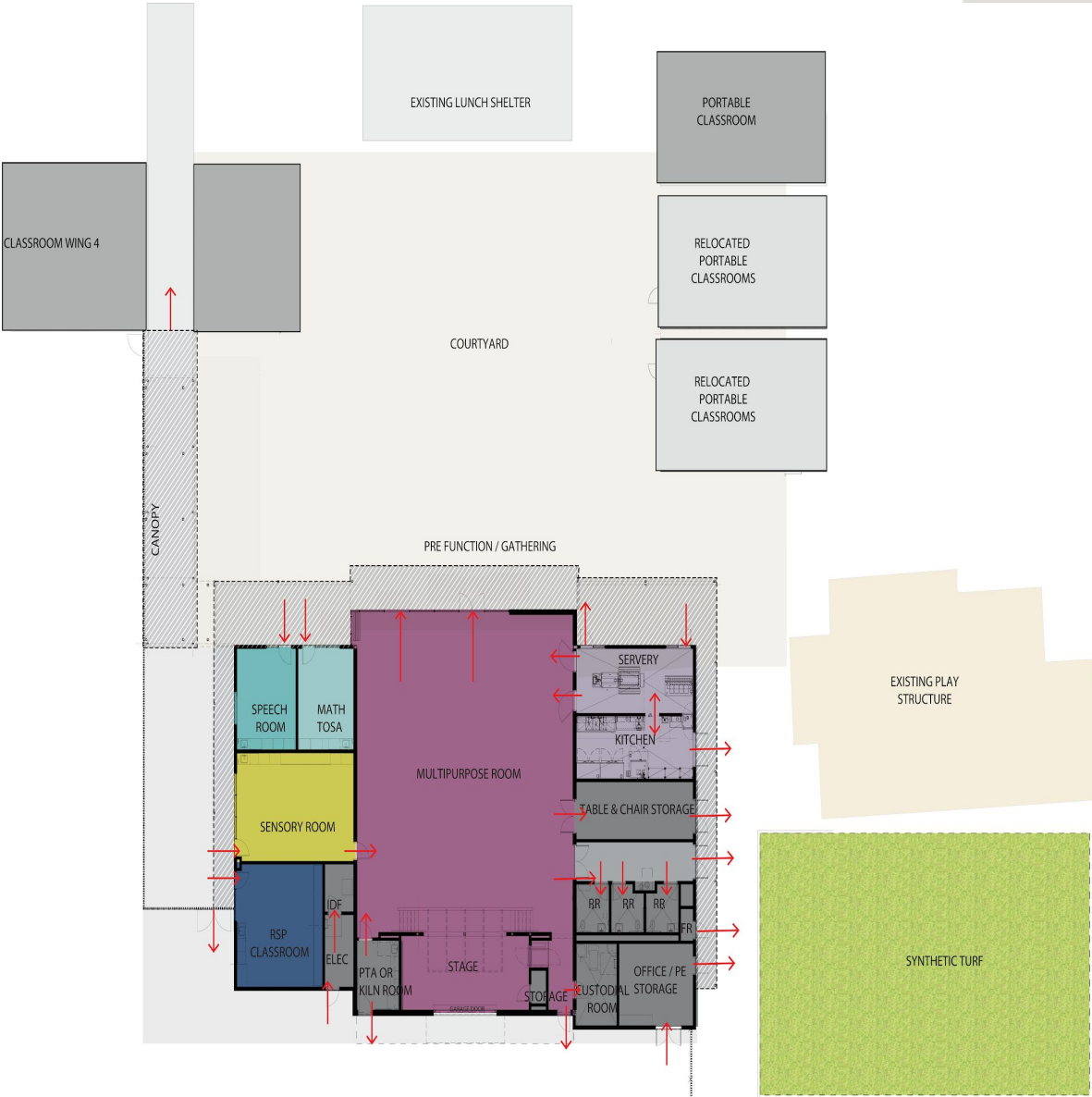


WORKING EXTERIOR DESIGN





GEORGE HALL MULTIPURPOSE BUILDING PLAN



George Hall Elementary School - Multi Purpose Building



FLOOR PLAN

Jan 2021



GEORGE HALL EXTERIOR AND NEW COURTYARD
FROM LUNCH SHELTER (BUILT 2018)

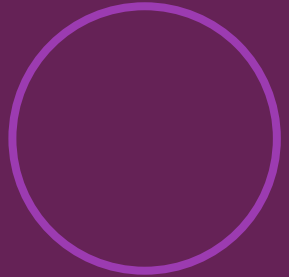
GEORGE HALL MULTIPURPOSE BUILDING FROM PLAYGROUND



VIEW FROM CURTISS STREET LOOKING
EAST

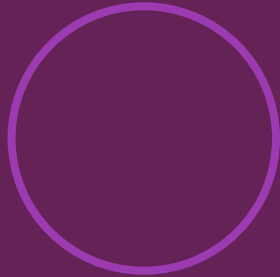


CURRENT PROJECTED TIMELINE—GEORGE HALL AND SUNNYBRAE MULTIPURPOSE BUILDINGS



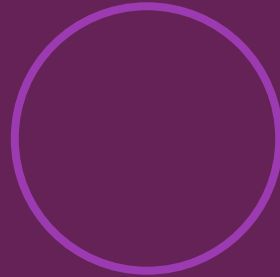
Technical Studies,
Location and
Schematic
Design Phase

COMPLETED



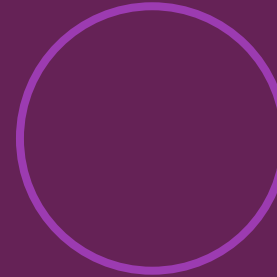
Construction
Documentation
and
Specifications
Phase

NEARING
COMPLETION



Division of
State Architect
Review and
Approval

Summer 2021-
Early 2022



Public Bidding
Phase and
Award of
Contract to
General
Contractor

Spring 2022



Site
Mobilization
and
Construction

Summer 2022-
Summer 2023

COST ESTIMATES—MEASURE X PHASE II

- Bowditch: within budget
- Sunnybrae: \$1m. over construction cost budget in large part due to the need for a lunch shade structure next to the Multipurpose Building (May 2021 cost estimate)
- George Hall: last cost estimate completed in February 2021 was slightly above budget; second independent cost estimate expected before June 24, 2021 Board Meeting
- New School in North Central: to be determined once facility planning begins after Board direction on school program

NEXT STEPS—JUNE 24TH BOARD MEETING

- Provide projected remaining balance in Phase I after all projects are completed and all bills paid
- Provide June cost estimate for George Hall Multipurpose Building
- Recommend to the Board of Trustees source/s of revenues to meet any budget increases for Phase II projects known as of June 24th or in the future.

QUESTIONS AND COMMENTS

