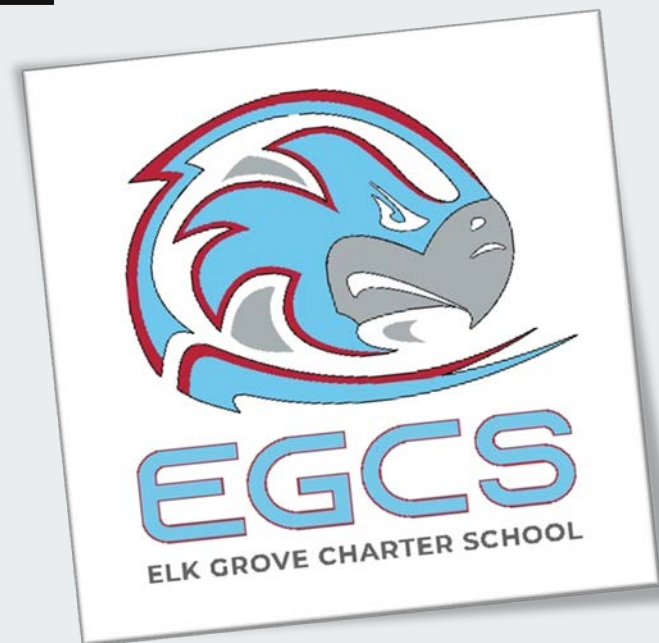
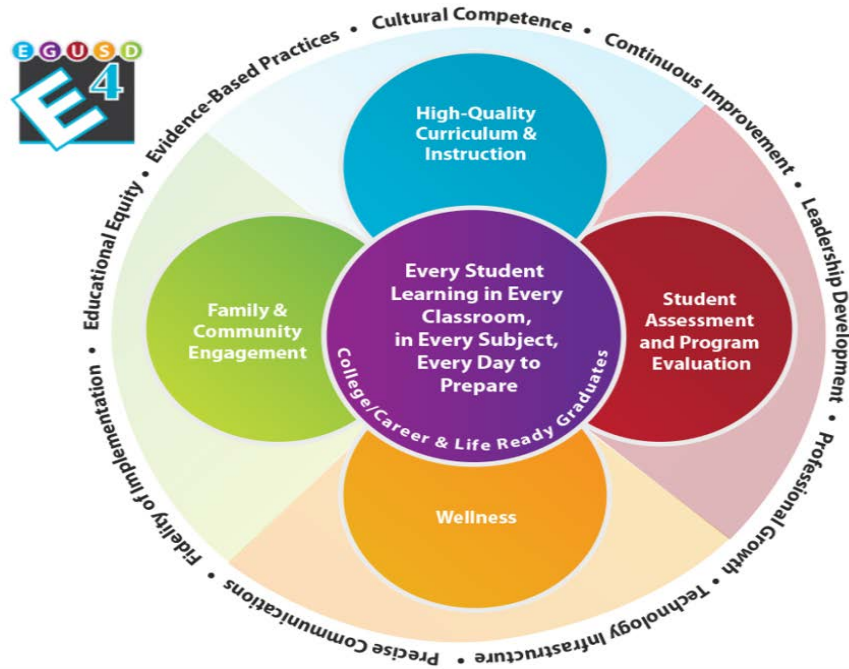


# LCAP

# Local Indicators 2021

Board of Education Meeting | June 22, 2021  
Marc LaVine – Principal Elk Grove Charter School





## EGUSD Strategic Goals

### High-Quality Curriculum & Instruction

All students will receive high quality classroom instruction and curriculum to promote college and career readiness and close the achievement gap.

### Student Assessment and Program Evaluation

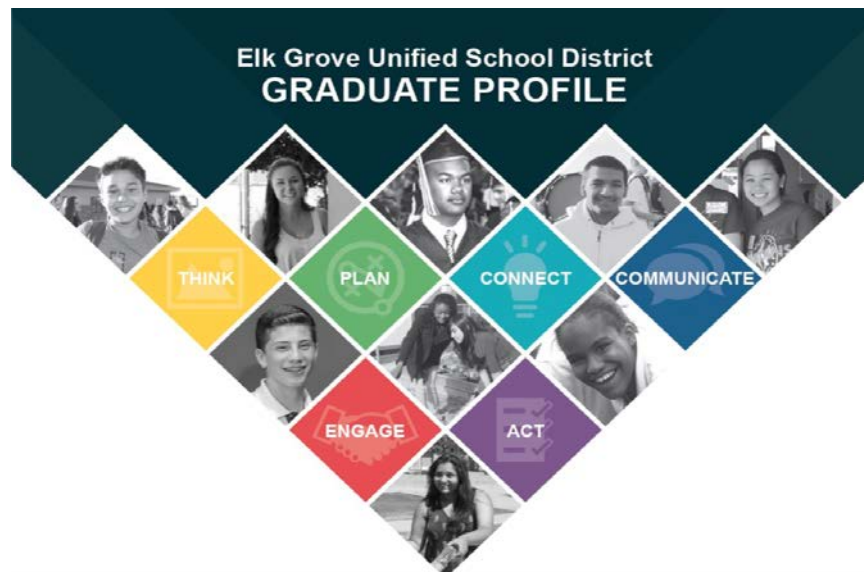
All students will benefit from instruction guided by assessment results (formative, interim and summative) and continuous programmatic evaluation.

### Wellness

All students will have an equitable opportunity to learn in a culturally responsive, physically, and emotionally healthy and safe environment.

### Family & Community Engagement

All students will benefit from programs and services designed to inform and involve family and community partners.



## Educational Equity



Ensures the decisions, policies, and practices in our learning system are culturally sensitive and provides all students with access, opportunity, support, and resources.

# Local Indicators



DISTRICT PERFORMANCE OVERVIEW  
Elk Grove Charter School

Using locally collected data, charters will measure and report their progress through the Dashboard on:

- Basic Services (teacher assignment, materials, facilities) – Priority #1
- Implementation of State Academic Standards – Priority #2
- Parent Engagement – Priority #3
- School Climate – Priority #6
- Broad Course of Study – Priority #7

# Performance Standards



The State Board of Education approved standards that require charters to:

- Annually measure its progress
- Report the results at a regularly scheduled public meeting of the local governing board in conjunction with the adoption of the LCAP
- Upload and publicly report the results through the Dashboard

# Performance Levels



The three performance levels for the local indicators are:

- *Met*
- *Not Met*
- *Not Met for Two or More Years*
- Narrative Box to Summarize Progress

# Basic Services – MET



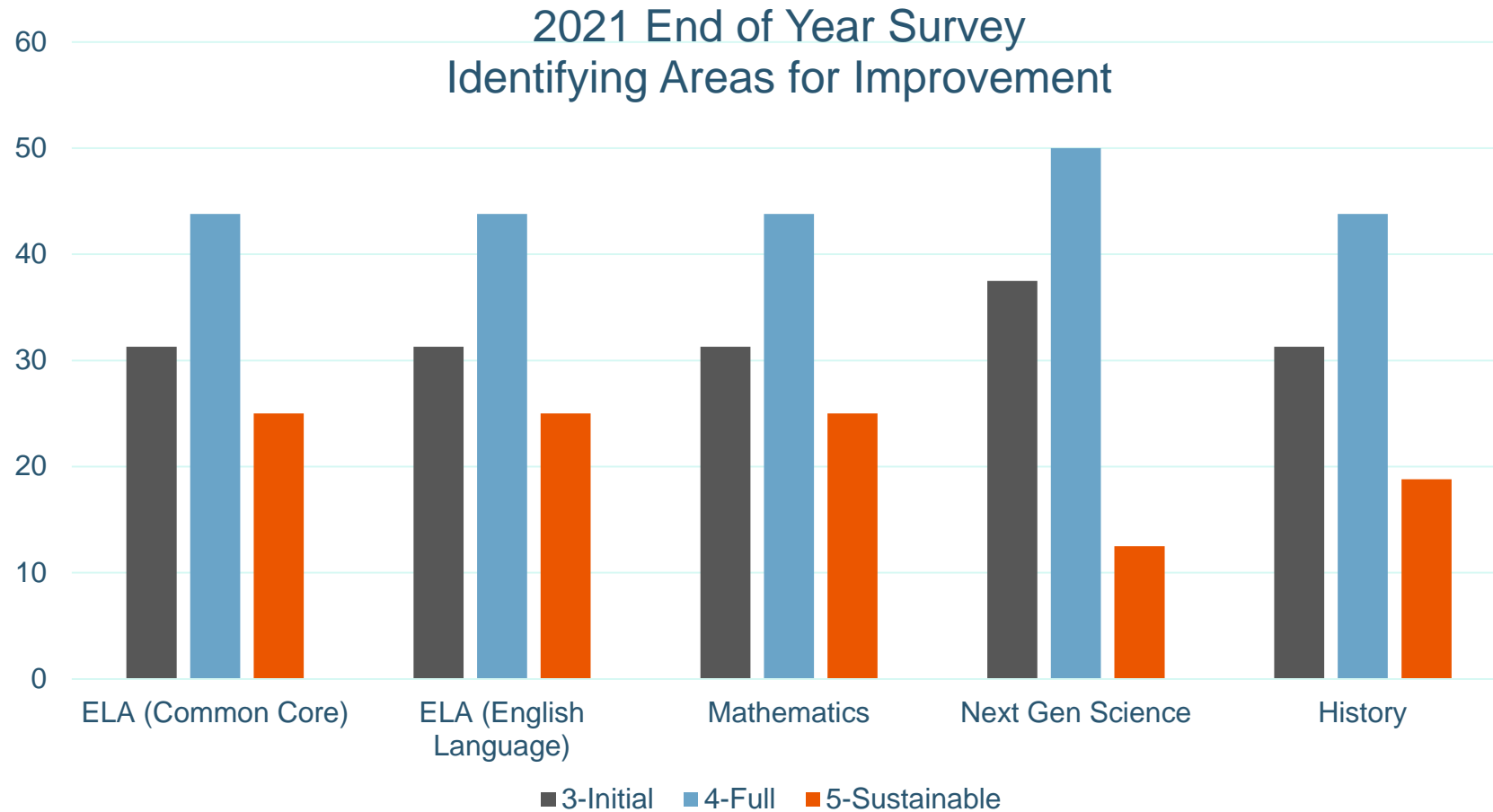
- Teachers
  - #/% misassignments - teachers of English learners 0 teachers (0%)
  - #/% misassignments - total teachers 0 teachers (0%)
  - #/% vacant teacher positions 0 teachers (0%)
- Student access to instructional material
  - #/% without access 0 students (0%)
- Conditions of school facilities
  - # instances of not meeting “good repair” 0 facilities (0%)

# Implementation of State Academic Standards – MET



- Implementation Rating Scale (1 to 5):  
1-Exploration -> 2-Beginning -> 3-Initial -> 4-Full -> 5-Sustaining
- Recently Adopted Academic Standards  
and/or Curriculum Frameworks: Full
- Other Adopted Academic Standards/Frameworks: Full
- Support for Teachers and Administrators: Full

# Implementation of State Academic Standards – MET



# Parent Engagement – MET



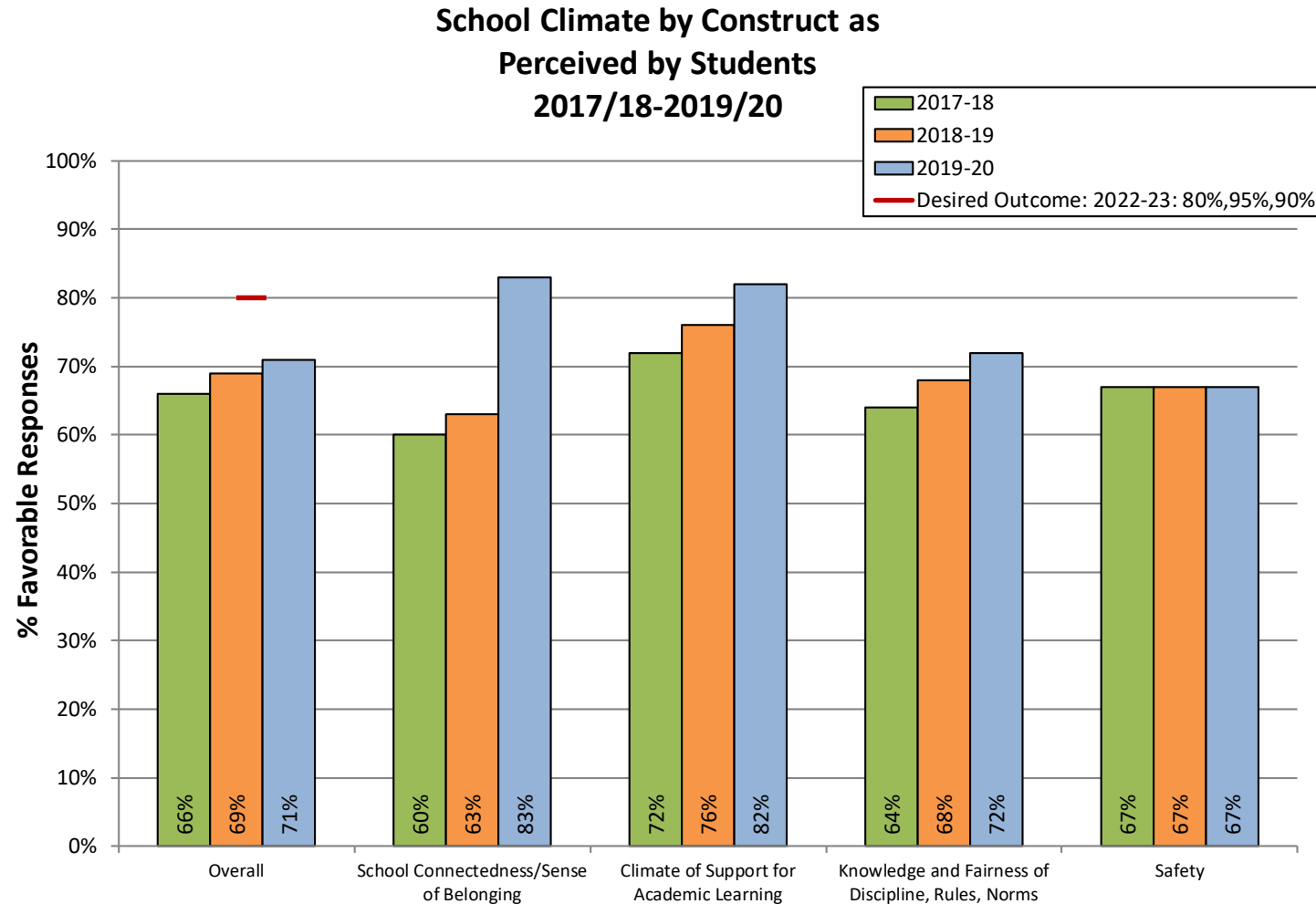
- Implementation Rating Scale (1 to 5):  
1-Exploration -> 2-Beginning -> 3-Initial -> 4-Full -> 5-Sustaining
- Building Relationships: Initial
- Building Partnerships for Student Outcomes: Initial
- Seeking Input for Decision Making: Initial

# School Climate – MET

---

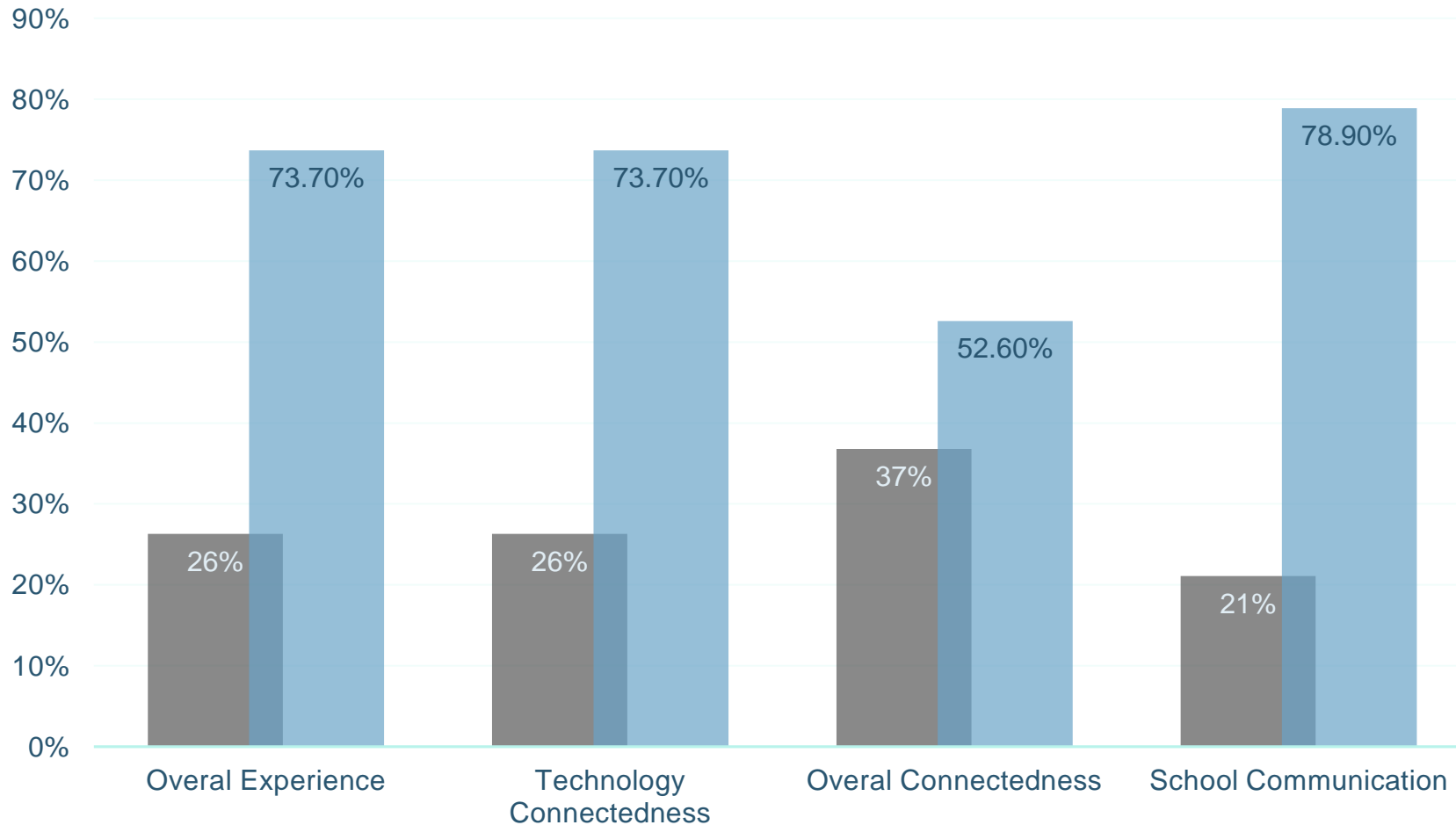
- EGCS stakeholders are included in EGUSD's survey's and the practice is to conduct climate survey of students, school staff, and parents – Not administered in 2020-21 due to COVID-19
- Constructs of:
  - School Connectedness and Sense of Belonging
  - Climate of Support for Academic Learning
  - Knowledge and Fairness of Discipline, Rules, and Norms
  - Safety
- EGCS-administered climate survey in 2020-21 focused on overall experience, technology connectedness, overall connectedness, and school communication

# School Climate – By Theme



# School Climate – EGCS Survey

Students who agree with climate statements

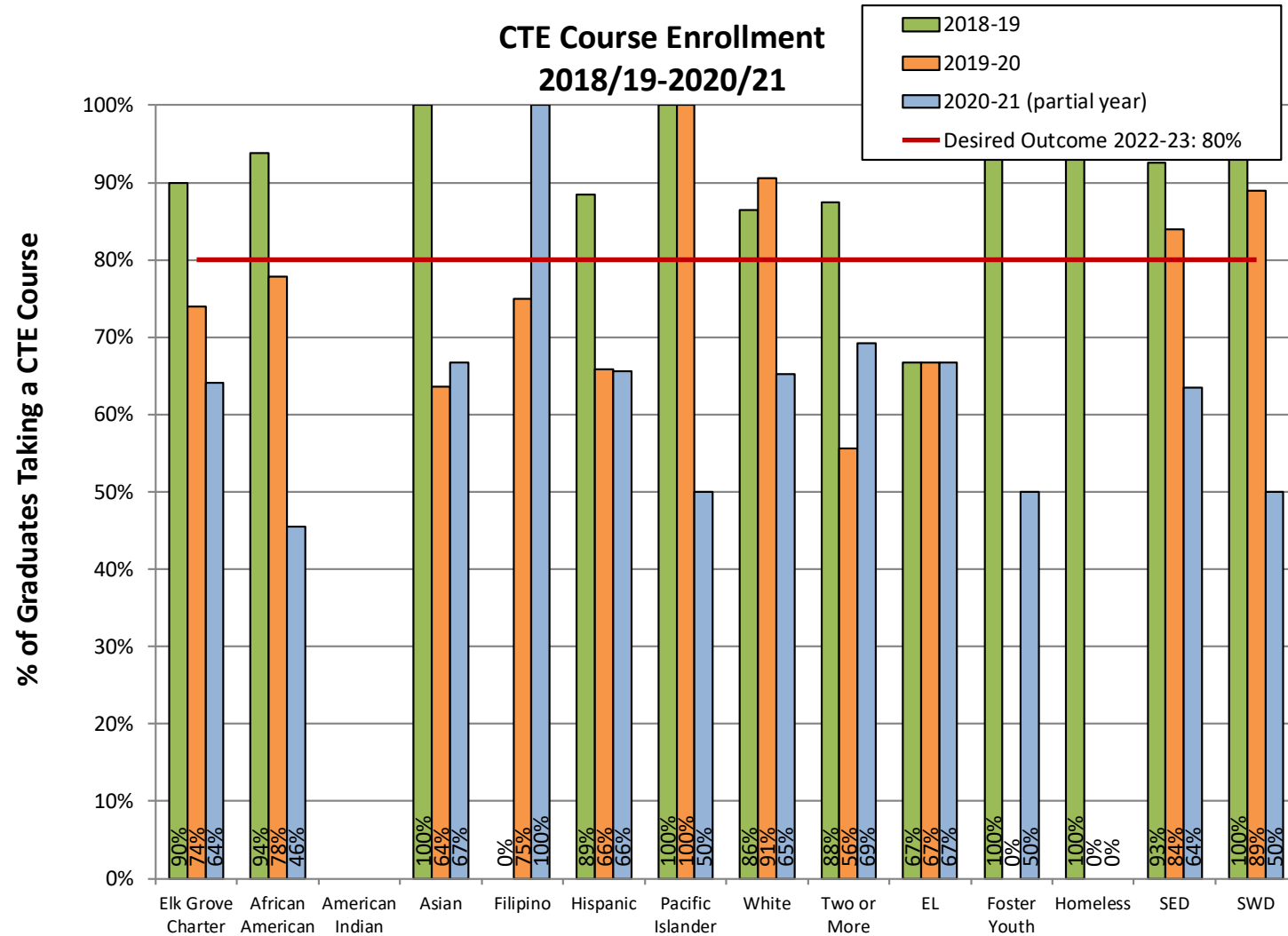


# Broad Course of Study – MET



- As a charter school with a niche student population, EGCS measures its local indicator for a broad course of study through the following 3 metrics:
  - Diploma options to meet individual student goals
    - Traditional diploma completers – 78%
    - Alternative diploma completers – 21%
  - Enrollment in community college Advanced Education courses
    - 16 completers at 66% completion to application rate
  - Enrollment in Career Technical Education Courses (see graph)

# EGCS Students Enrolled in CTE Courses



# Local Indicators



DISTRICT PERFORMANCE  
OVERVIEW  
Elk Grove Unified

Using locally collected data, districts will measure and report their progress through the Dashboard on:

- Basic Services (teacher assignment, materials, facilities) – Priority #1 - **MET**
- Implementation of State Academic Standards – Priority #2 - **MET**
- Parent Engagement – Priority #3 - **MET**
- School Climate - Priority #6 - **MET**
- Broad Course of Study – Priority #7 - **MET**

# LCAP

# Local Indicators 2021

Board of Education Meeting | June 22, 2021  
Marc LaVine – Principal Elk Grove Charter School

