



MEASURE T UPDATE— MULTIPURPOSE BUILDINGS

SAN MATEO-FOSTER CITY SCHOOL DISTRICT

BOARD OF TRUSTEES

JUNE 24, 2021

PURPOSES OF TONIGHT'S UPDATE

- Background
- Overview of the Planning Process for the Multipurpose Buildings
- General Scope—District Standards
- Exterior and Interior Renderings—Phase I
- Next Steps

BACKGROUND

SMFCSD's Facilities Master Plan (FMP, adopted July 30, 2020) included as Immediate Priorities the construction of four Multipurpose Buildings at the remaining sites with the LGIs (Large Group Instruction) constructed in the 1960's at:

- Highlands LEAD Meadow Heights Parkside Montessori

Measure T, authorized by the voters, in November 2020 authorized bond funding for the Immediate Priorities in the FMP

Major Phases in the Project Process (full projected timeline to be developed by Fall 2021 after Technical Studies are completed)

**Technical
Studies,
Location and
Initial Design
Phase**

Construction
Documentation
and
Specifications
Phase

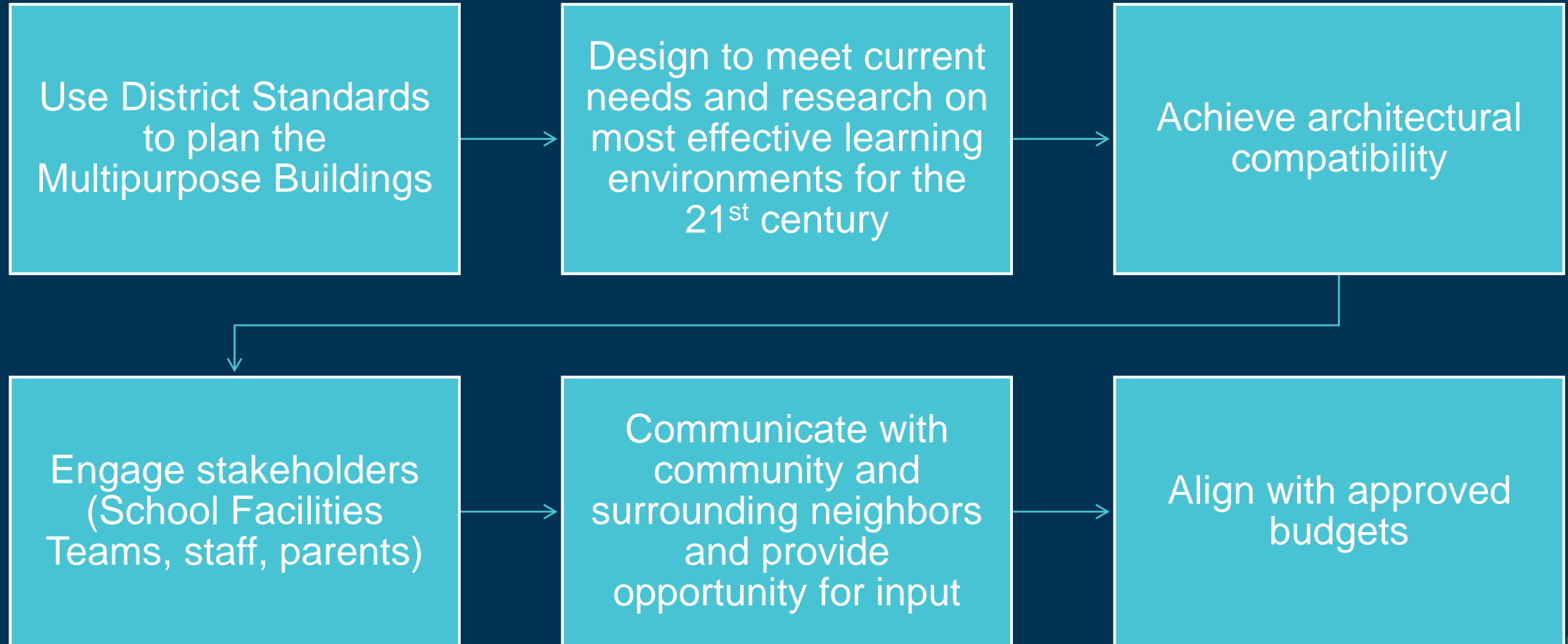
Division of State
Architect Review
and approval

Public Bidding
Phase and
Award of
Contract to
General
Contractor

Site Mobilization
and Construction

Current Phase

SMFCSD Guiding Principles for Planning



Overview of District Standards for Multipurpose Buildings

- MPR: Sized to fit 50% of projected student enrollment at lunch tables; larger capacity for audience-style seating
- Stage area with curtains and a lift for accessibility
- Built in projector and drop-down screen and audio
- Warming kitchen and serving area
- Restrooms
- Custodial Room
- Table and chair storage
- Space for PTA Storage
- PE Office and storage
- Additional space as needed to free up classrooms for enrollment growth

WHAT'S HAPPENED TO DATE:

- Architects selected from SMFCSD's Qualified Architect Pool-
 - LEAD—HKIT Architects
 - Highlands—LPA Architects
 - Meadow Heights—Lionakis Architects
 - Parkside Montessori—HMC Architects
- Technical Studies begun for each site
- School Facility Team meetings held with each site focused on location and conceptual exteriors and interiors
- First Neighborhood/School Community Meetings held for each site providing project scope, location and conceptual exteriors and interiors

Major Location Considerations



Seen as part of the school and easily accessible for all users



Minimize the need to relocate existing buildings or utilities lines so that budget is protected for the project itself where possible



Minimize disruption to teaching and learning during construction

Major considerations for Exterior Design/Massing/Building Height



FIT WITH THE CAMPUS

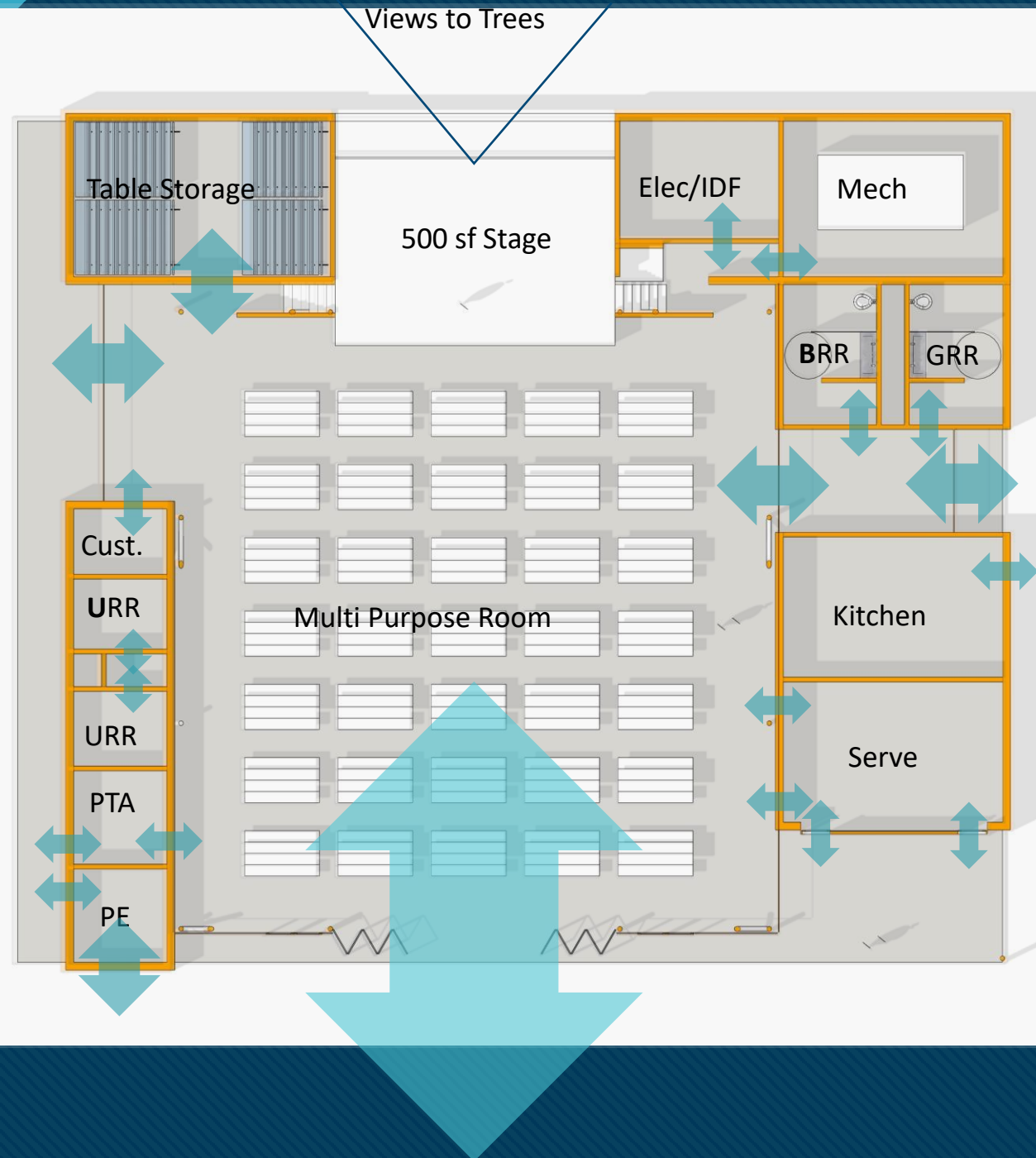


FIT WITH THE SURROUNDING
NEIGHBORHOOD

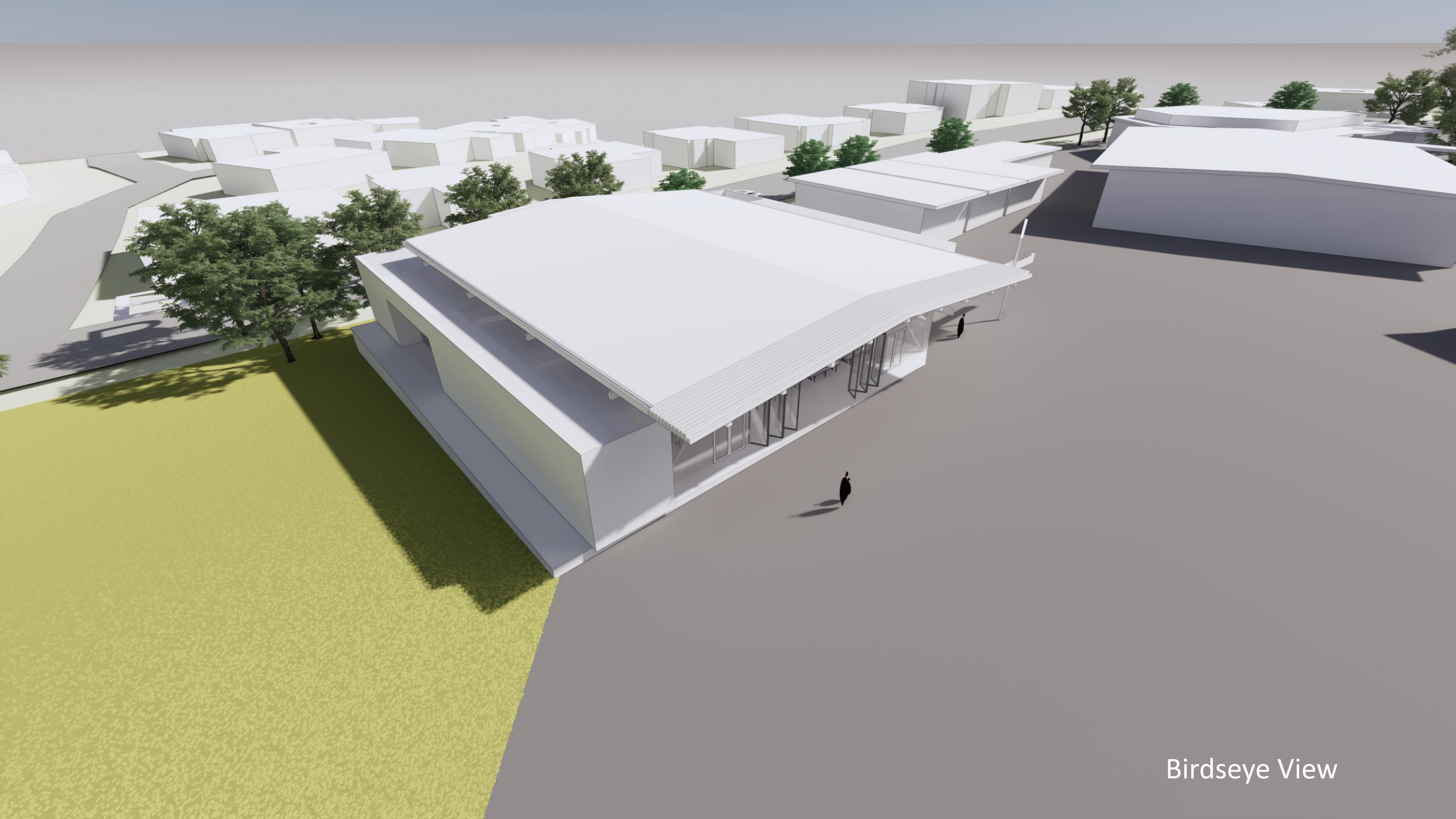
An abstract graphic on the left side of the slide, consisting of a network of white lines and small circles on a blue gradient background, resembling a circuit board or a stylized tree structure.

HIGHLANDS' MULTIPURPOSE BUILDING





Floor Plan



Birdseye View



THE BEAR DEN

View from East



View to Stage

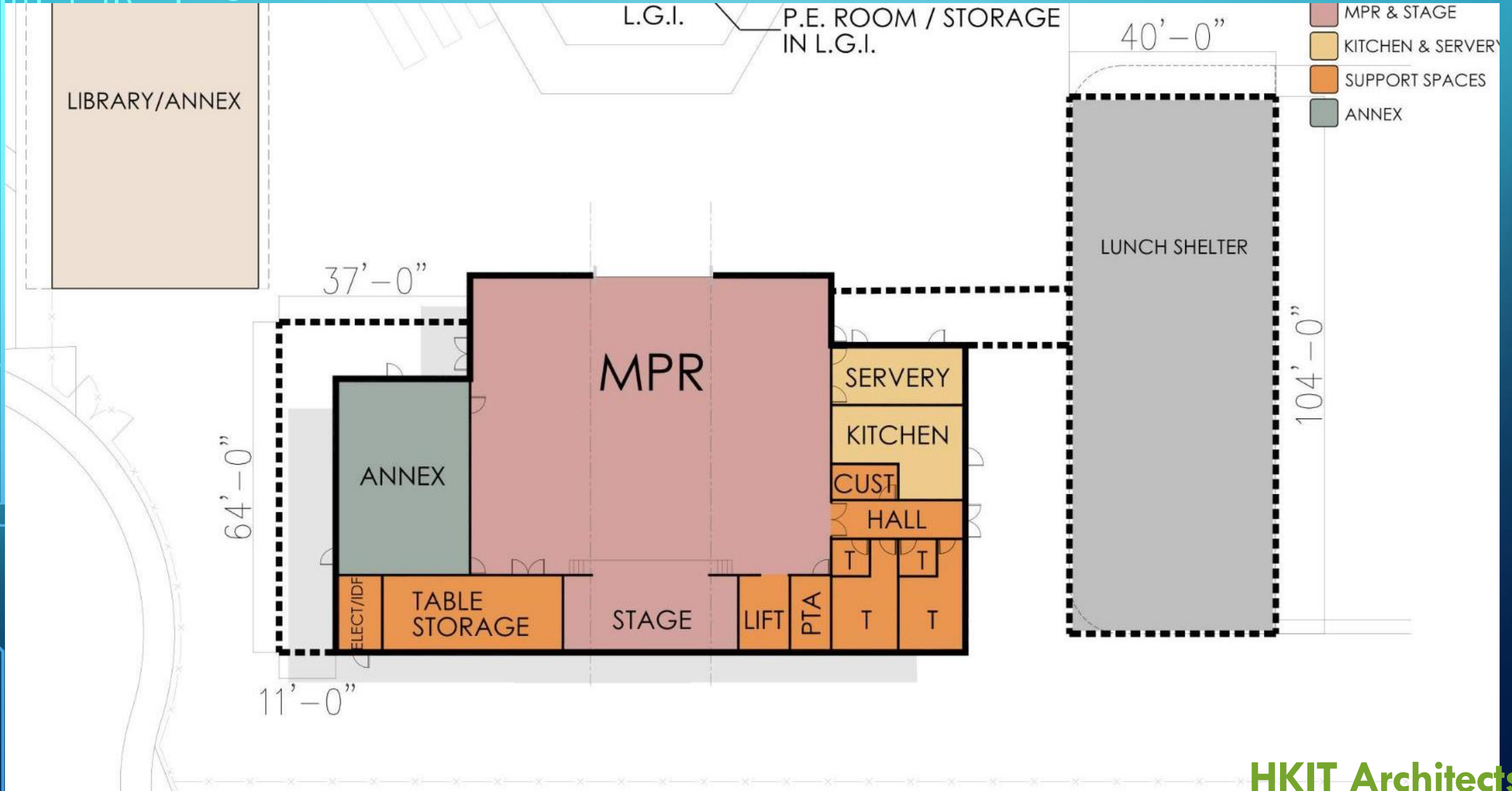
A decorative graphic on the left side of the slide, consisting of a network of white lines and small circles on a blue gradient background, resembling a circuit board or a stylized tree structure.

LEAD'S MULTIPURPOSE BUILDING

LEAD MULTIPURPOSE BUILDING LOCATION



LEAD Multipurpose Building Conceptual Floor Plan



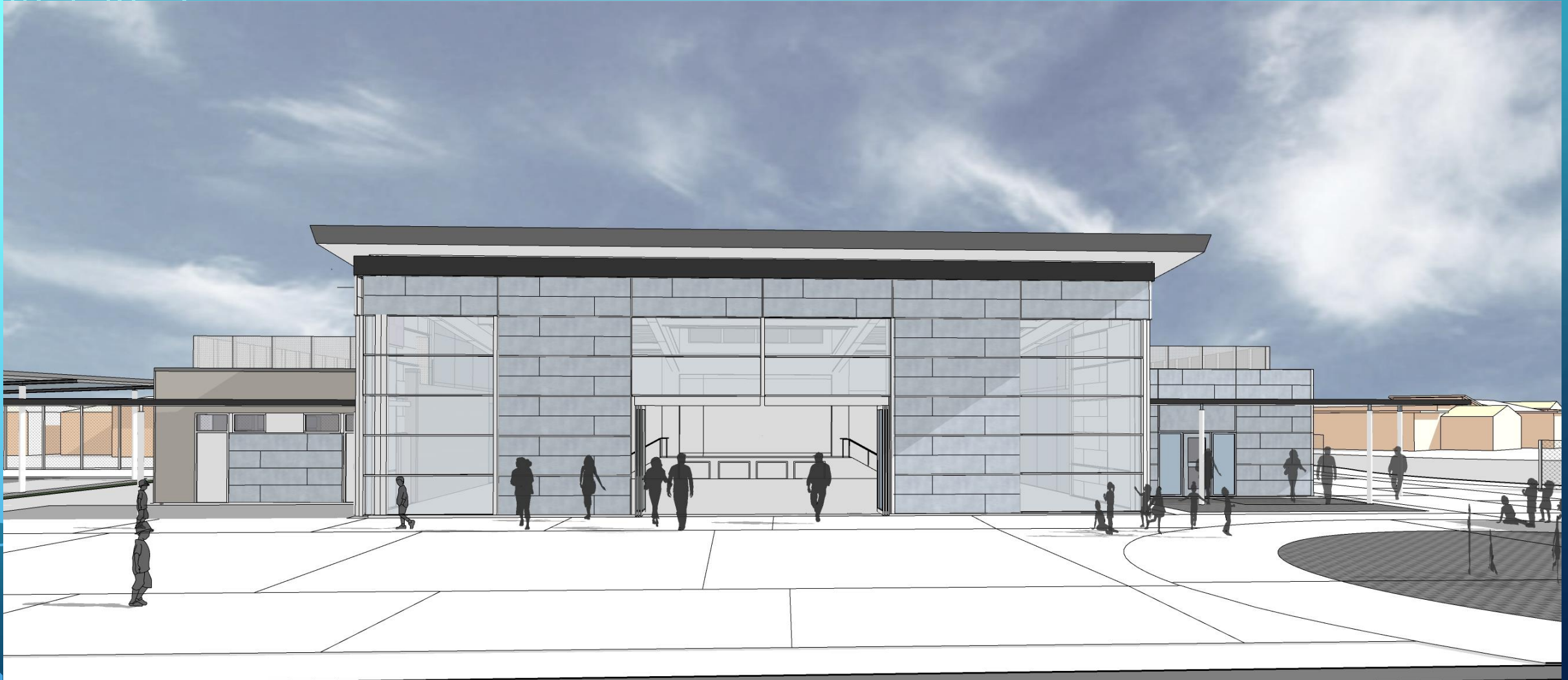
View from Ocean View Avenue



Multipurpose View from the area between the Library and LGI



Multipurpose view looking south toward the new building

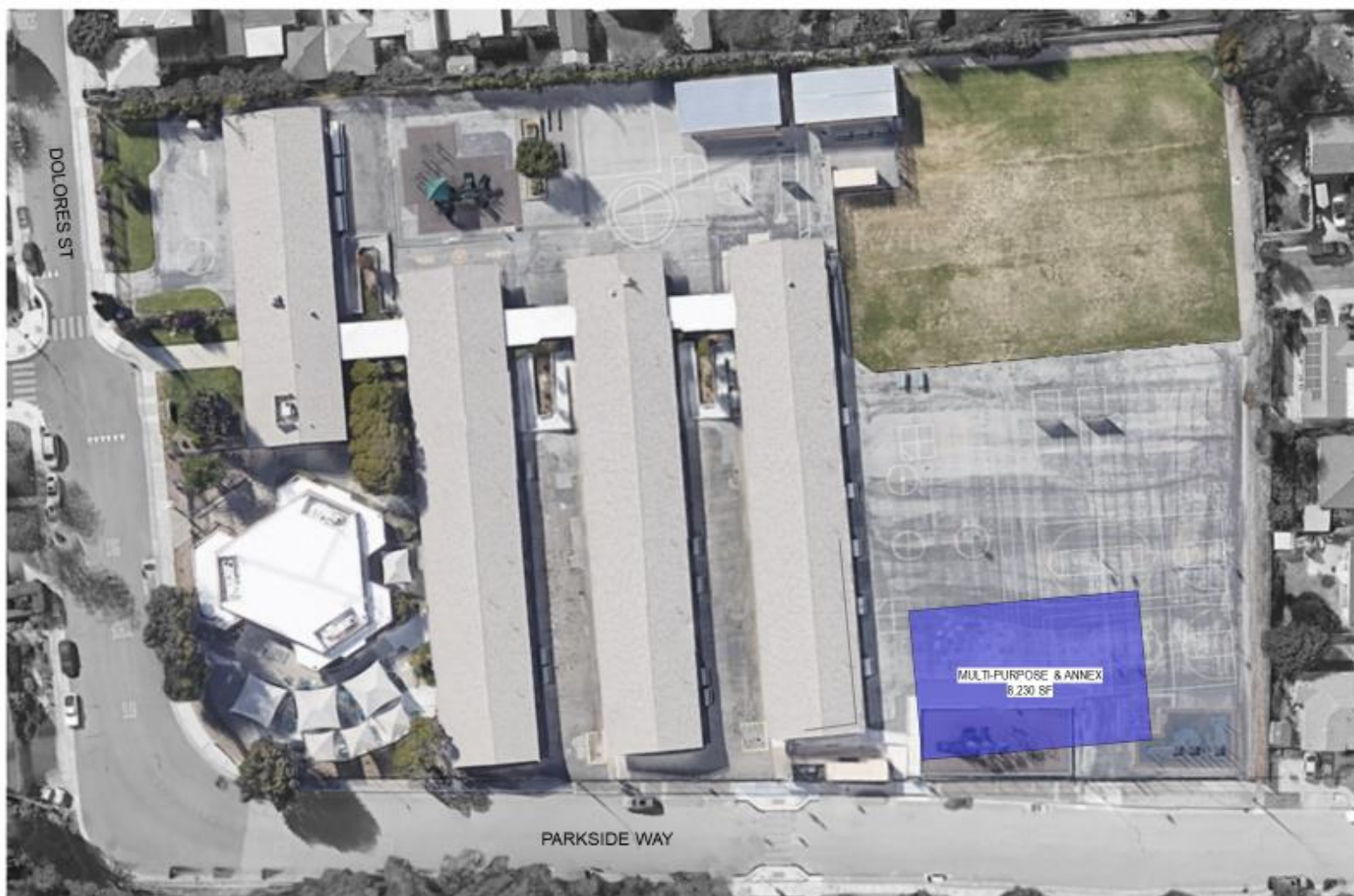


View from the northeast with the lunch structure to the east of the Multipurpose Building





MEADOW HEIGHTS' MULTIPURPOSE BUILDING



PROPOSED LOCATION

MEADOW HEIGHTS MULTI-PURPOSE BUILDING MAY 28, 2021

LIONAKIS



Neighborhood Context

EXISTING SITE

MEADOW HEIGHTS MULTI-PURPOSE BUILDING JUNE 10, 2021

LIONÄKIS

Meadow Heights
Multipurpose
Building view
southward from the
play area



View from Parkside Way (across from the back of Beresford Park)



The background is a blue gradient with abstract white lines and circles in the corners, resembling circuitry or a network diagram.

PARKSIDE MONTESSORI'S MULTIPURPOSE BUILDING



SMFCSD Parkside Montessori Proposed Site Plan

HMC Architects



A NOTE ABOUT PARKSIDE MONTESSORI PROJECT:

The Facilities Master Plan for the New Decade includes funding also for additional space to expand its program to grades 8. The Multipurpose Building project includes a new modular building on the north side of the site for additional assembly/Makers'/Science space, and smaller rooms for small group instruction and support offices. This building which will be modular demolished for the location of the new Multipurpose Building and redesigned parking area.

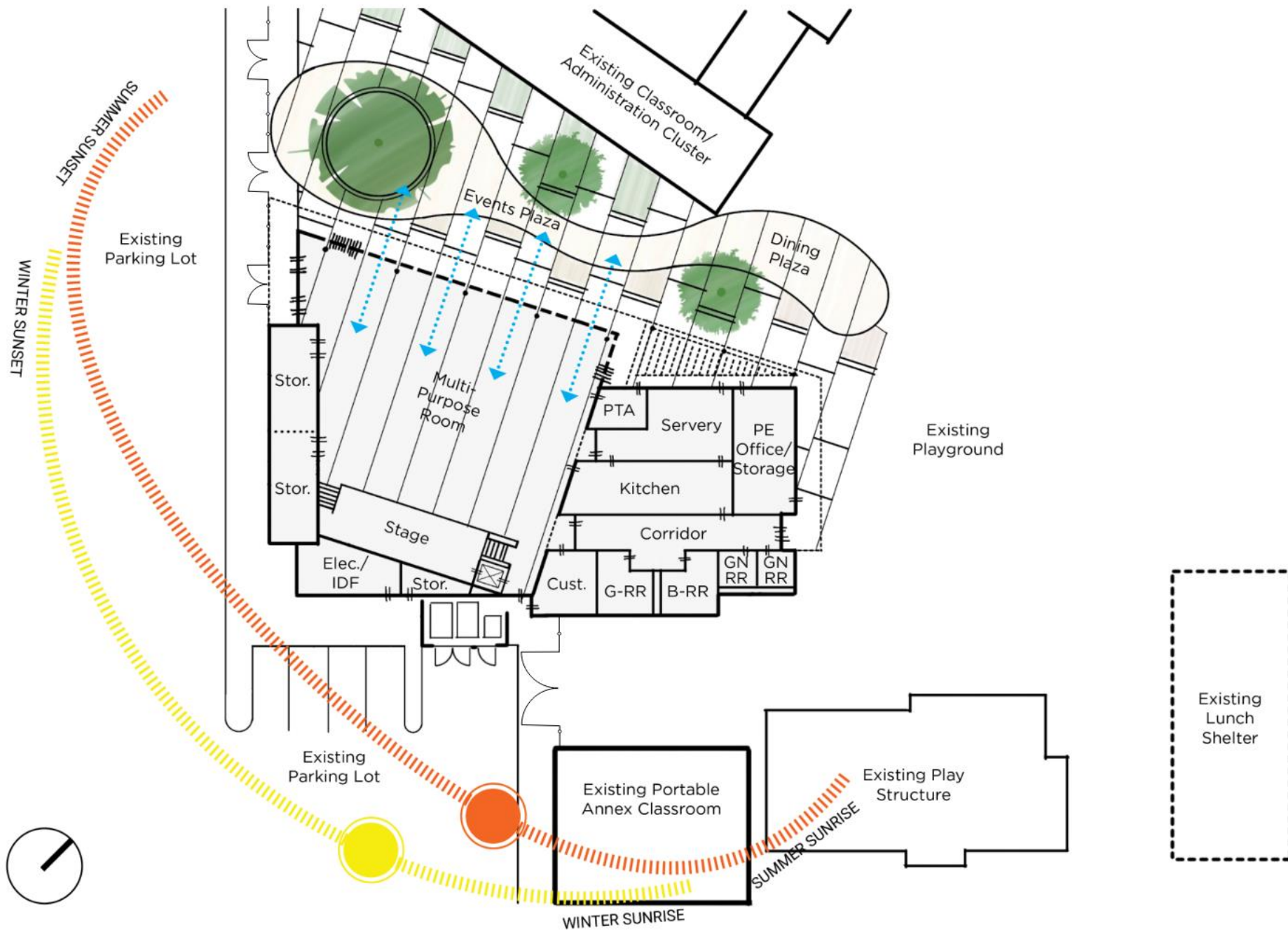


SMFCSD Parkside Montessori Proposed Building Massing

HMC Architects









LOOKING EAST FROM THE PARKING LOT

Looking from
the
administration/
classroom wing
across the
courtyard



Looking from
the east/black
top play area
toward the
parking lot



Multipurpose Buildings—Next Steps

- Technical studies completed
- Schematic design work completed (Phase I of Project Process)
- Independent Cost Estimates for each to align with projected budgets
- Architects to begin design development phase (Phase II)
- Projected Timeline for each project
- Continued School Facilities Team and Neighborhood/Community Meetings as each project progresses

The background features a diagonal split. The upper-left portion is a light blue color with thin, closely spaced horizontal lines. The lower-right portion is a solid dark blue. A thin, dark diagonal line separates the two sections.

Questions/Comments