



Lozano Smith
ATTORNEYS AT LAW

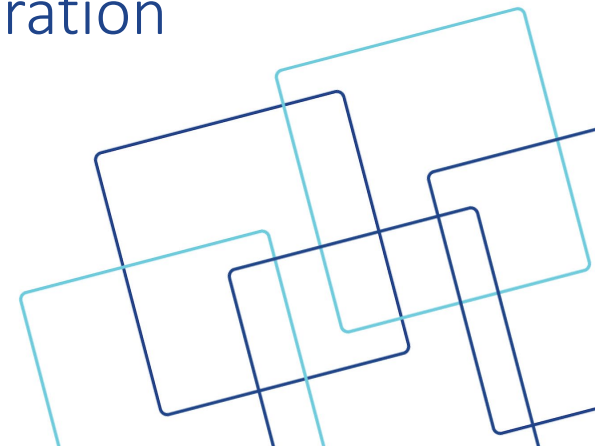


Introduction to Districting

Presented by: Dr. Douglas Johnson, National Demographics Corporation

Sam Mateo Union High School District

September 9, 2021



Rules and Goals

Federal Laws

- ❑ Equal Population
- ❑ Federal Voting Rights Act
- ❑ No Racial Gerrymandering



Traditional Redistricting Principles

- ❑ Communities of interest
- ❑ Compact
- ❑ Contiguous
- ❑ Visible (Natural & man-made) boundaries
- ❑ Respect voters' choices / continuity in office
- ❑ Planned future growth
- ❑ Minimize voters shifted to different election years
- ❑ Preserving the core of existing election areas

Defining Neighborhoods

1st Question: What is your neighborhood?

2nd Question: What are its geographic boundaries?

Examples of physical features defining a neighborhood boundary:

- Natural neighborhood dividing lines, such as highway or major roads, rivers, canals and/or hills
- Areas around parks or schools
- Other neighborhood landmarks

In the absence of public testimony, planning records and other similar documents may provide definition.



Beyond Neighborhoods: Defining Communities of Interest

1st Question: What defines your community?

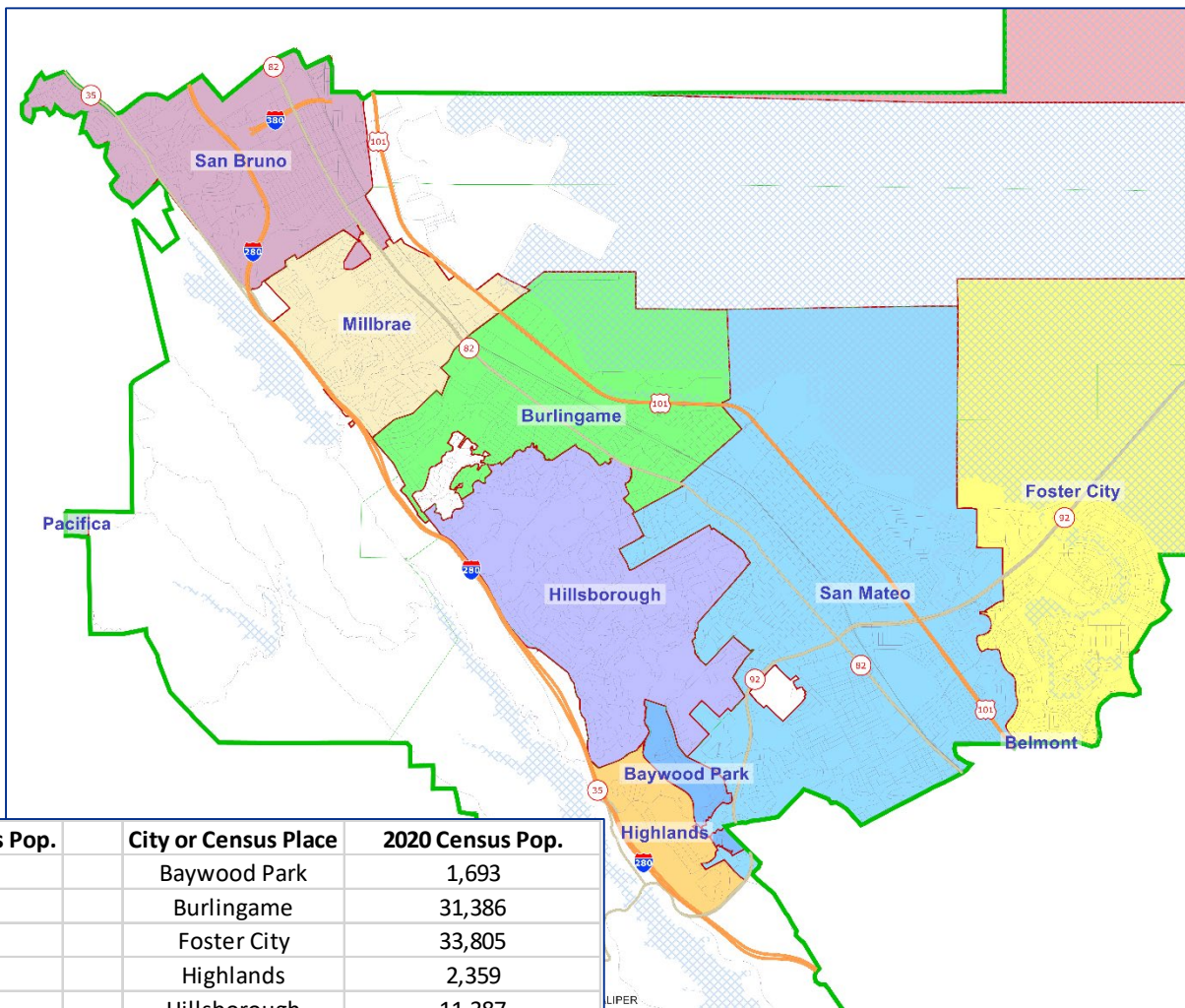
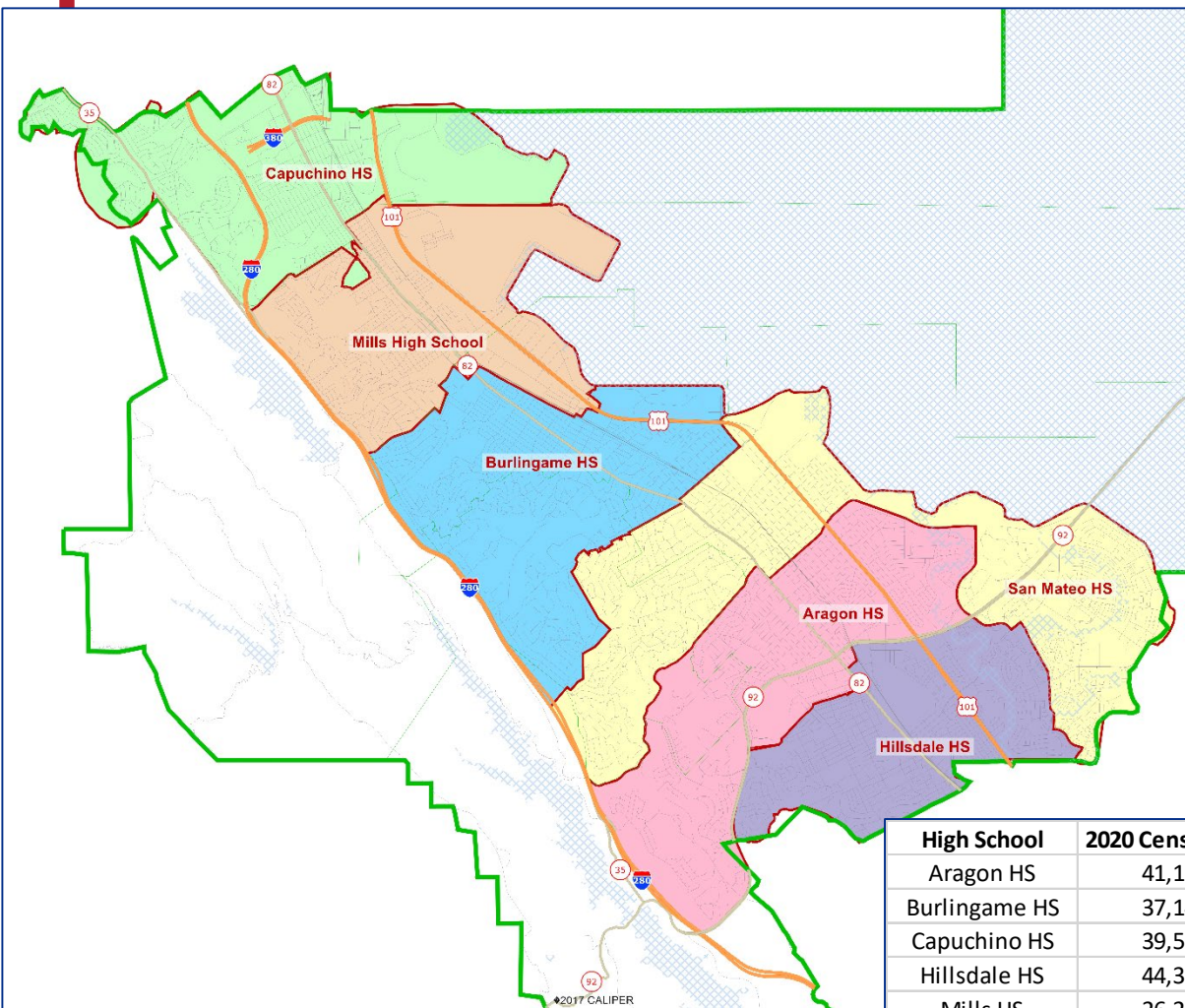
- Geographic Area, plus
- Shared issue or characteristic
 - Shared social or economic interest
 - Impacted by city policies
- Tell us “your community’s story”

2nd Question: Would this community benefit from being “included within a single trustee area for purposes of its effective and fair representation”?

- Or would it benefit more from having multiple representatives?

Definitions of Communities of Interest may not include relationships with political parties, incumbents, or political candidates.

Attendance Zone and City Maps

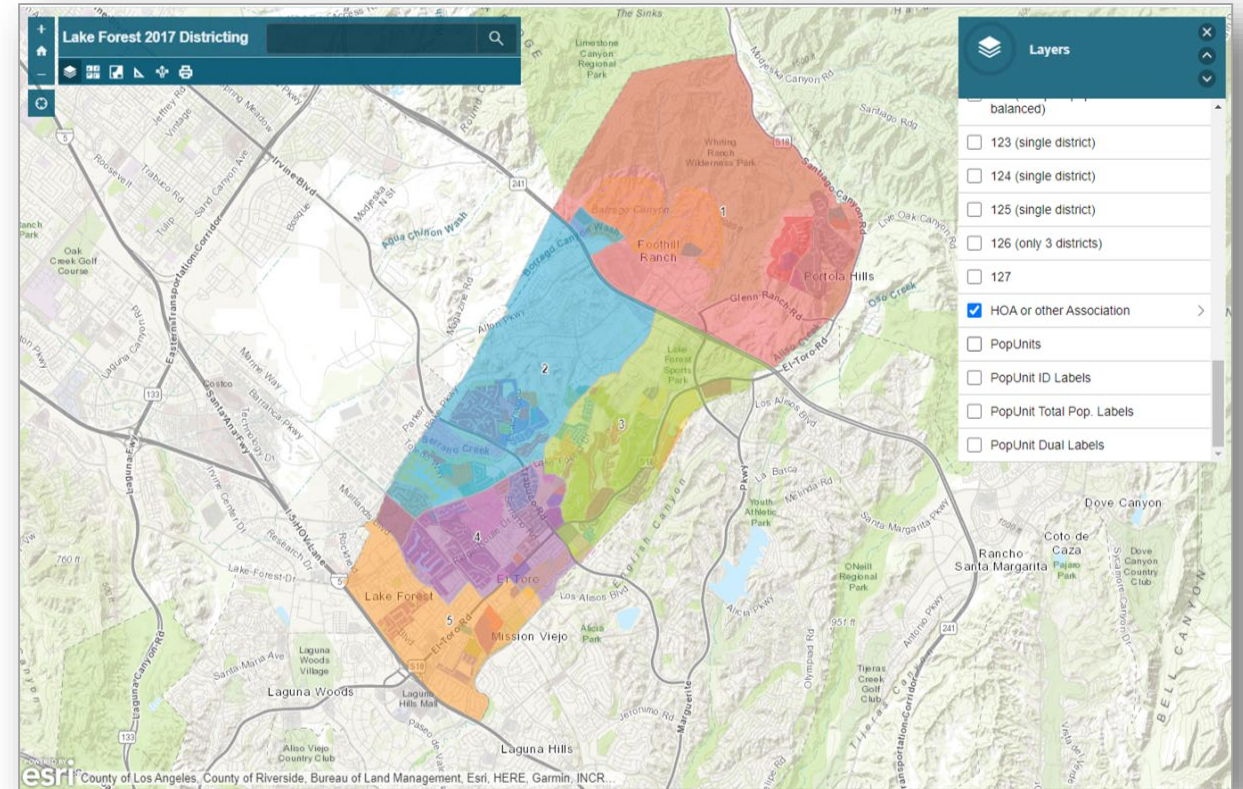


High School	2020 Census Pop.	City or Census Place	2020 Census Pop.
Aragon HS	41,153	Baywood Park	1,693
Burlingame HS	37,140	Burlingame	31,386
Capuchino HS	39,519	Foster City	33,805
Hillsdale HS	44,316	Highlands	2,359
Mills HS	26,275	Hillsborough	11,387
San Mateo HS	61,192	Millbrae	23,216
Unassigned	335	San Bruno	42,192
Total	249,930	San Mateo	102,610
		Other Unincorp.	1,282
		Total	249,930

Simple Map Review Tool

Online Interactive Review Map

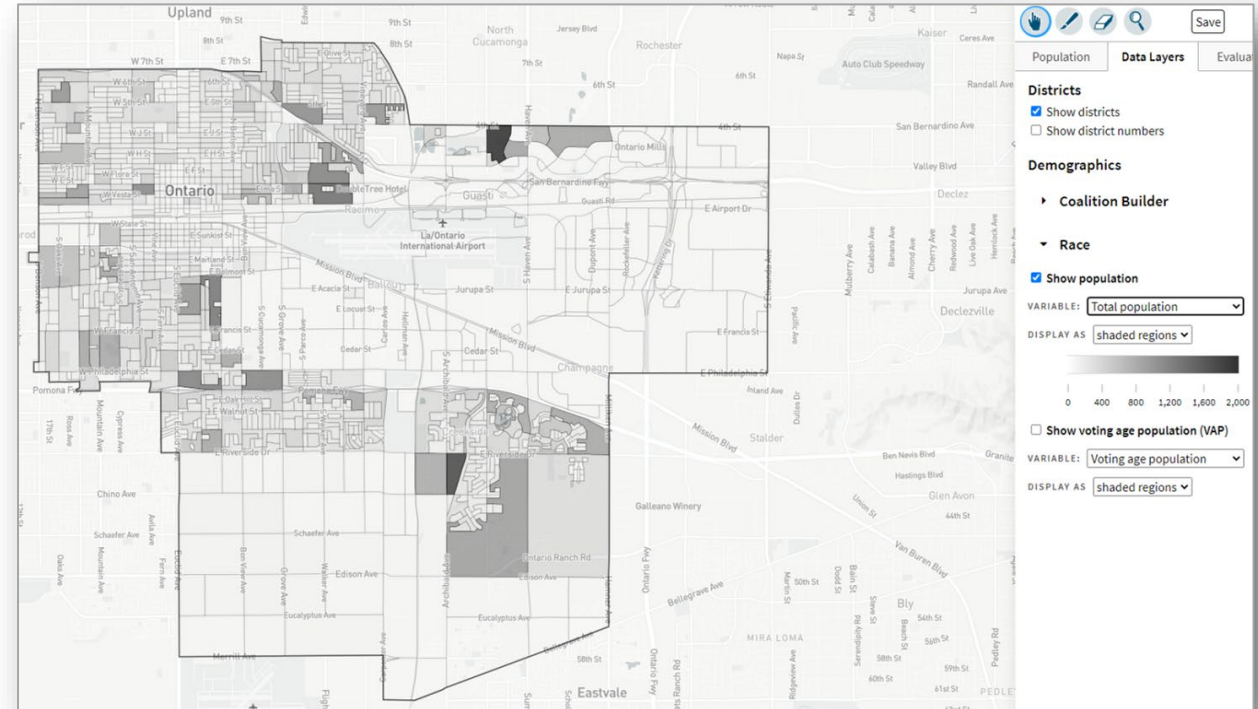
- ❑ ESRI's "ArcGIS Online" – similar to Google Maps in ease of use
- ❑ Used to review, analyze and compare maps, not to create them
- ❑ Includes overlays of “community of interest” and other data



Mapping Tool: DistrictR

“Draw Your Community of Interest” focus

- ❑ districtR.org
- ❑ Also includes simple district-mapping tool; Only available in English
- ❑ Similar external options:
Representable.org,
DrawMyCACommunity.org



Stay Informed

The screenshot displays the San Mateo Union High School District (SMUHSD) website. The top navigation bar includes links for HOME, OUR DISTRICT, DEPARTMENTS, PROGRAMS, STUDENTS, FAMILIES, and COMMUNITY. The district's logo and name are prominently featured, along with the tagline "A Commitment to Quality Education for a Better Future". A search bar and a "STAFF SIGN IN" link are also present. A "TRANSLATE" button is located on the right side of the page. The main content area is titled "CVRA BY-TRUSTEE AREA ELECTION" and includes a breadcrumb trail: HOME > OUR DISTRICT >. The page is divided into two columns. The left column contains a sidebar with a link to "CVRA By-Trustee Area Election". The right column contains the main text, which is organized into sections: "Background", "Update - June 28, 2021", "Process and Next Steps", and a list of upcoming public hearings. A "Help" button is located in the bottom right corner of the page.

HOME > OUR DISTRICT >

CVRA BY-TRUSTEE AREA ELECTION

Background

Board members in the San Mateo Union High School District are currently elected in "at-large" elections, where all board members are elected by voters throughout the entire school district. On February 25, 2021, the Board adopted Resolution No. 20-21-12, in response to a letter threatening to sue the District under the California Voting Rights Act (CVRA). SMUHSD intends to transition from at-large to by-trustee area Board elections, where each Board member must reside within the designated trustee area boundary, and is elected only by the voters in that trustee area. Voters would only vote for one seat on the school board.

Update - June 28, 2021

Process and Next Steps

The District will hold the following public hearings related to the transition to By-Trustee Area Elections:

August 26, 2021 - Regular Board Meeting - Pre-Map Public Hearing #1. The District will hold the first public hearing in the process prior to maps being drawn.

September 9, 2021 - Regular Board Meeting - Pre-Map Public Hearing #2. The District will hold the second public hearing prior to drawing maps. The Board will be asked to adopt a resolution selecting the criteria for the

[Help](#)

Public Hearing & Discussion

- ✓ What is your community of interest and what are its boundaries?
- ✓ Would you prefer your community of interest be in one trustee area or that it have multiple representatives on the Board?



Thank you.
Questions?

Contact

For more information, questions and comments about the presentation, please contact:

**Jonathan E.
Berry-Smith**

Lozano Smith

Tel: 925.953.1620

jberrysmith@lozanosmith.com

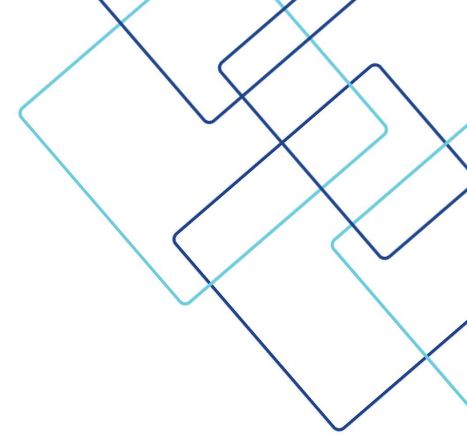
**Dr. Douglas
Johnson**

*National Demographics
Corporation*

Tel: 310.200.2058

djohnson@NDCresearch.com





Disclaimer: These materials and all discussions of these materials are for instructional purposes only and do not constitute legal advice. If you need legal advice, you should contact your local counsel or an attorney at Lozano Smith. If you are interested in having other in-service programs presented, please contact clientservices@lozanosmith.com or call (559) 431-5600.

Copyright © 2021 Lozano Smith

All rights reserved. No portion of this work may be copied, distributed, sold or used for any commercial advantage or private gain, nor any derivative work prepared therefrom, nor shall any sub-license be granted, without the express prior written permission of Lozano Smith through its Managing Partner. The Managing Partner of Lozano Smith hereby grants permission to any client of Lozano Smith to whom Lozano Smith provides a copy to use such copy intact and solely for the internal purposes of such client. By accepting this product, recipient agrees it shall not use the work except consistent with the terms of this limited license.

