



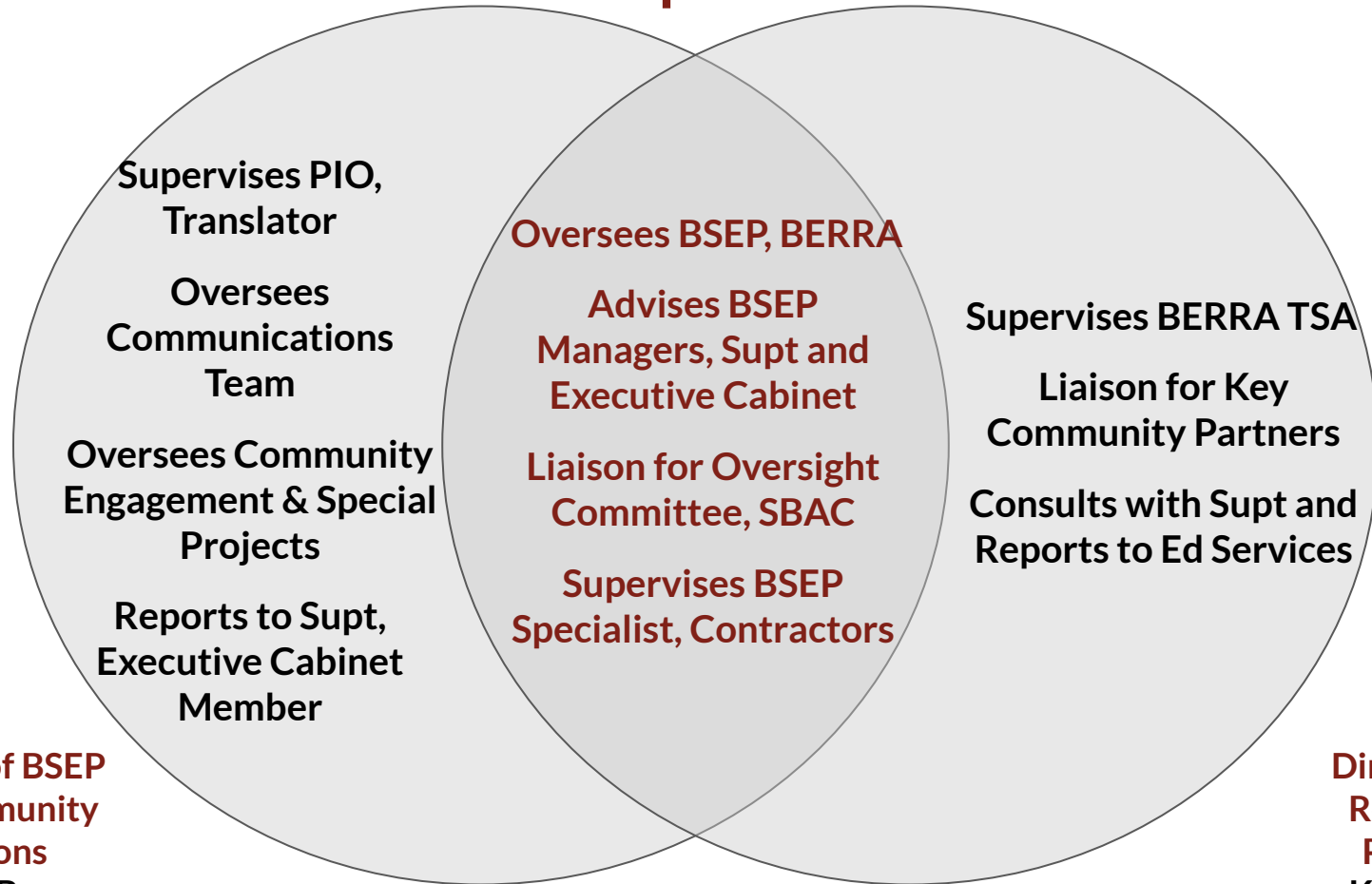
**BSEP Planning  
Board Meeting of Education Meeting  
9/22/21**

Natasha Beery, Director of BSEP and Community Relations  
Kathy Fleming, Director of Local Resources and Partnerships

# Presentation Overview

- Leadership Transition
- Overview of BSEP Funding
- Reauthorization Timeline
- HQI Trajectory
- Budget Takeaways
- Questions and Discussion

# Leadership Transition



**Director of BSEP  
and Community  
Relations**  
Natasha Beery

**Director of Local  
Resources and  
Partnerships**  
Kathy Fleming

Thanks to BSEP Measure E1, students in Berkeley have benefited from:



- **Smaller class sizes** supported by BSEP funding for the cost of  $\frac{1}{3}$  of BUSD classroom teachers
- Checking out over 1,000 **library books** every day; playing **3,200 musical instruments** each week
- **Wireless access** and Chromebooks for interactive and online educational tools, **translation and interpretation** services;
- Funding for every school to provide **high priority school-based programs** in keeping with annual action plans.
- **Middle school counselors** for academic and social-emotional support and **college and career counselors and tutors** at the high school level to help them reach their goals

# Reauthorization Timeline



# BSEP Resources

<b>High Quality Instruction</b>	<b>66%</b>
Class Size Reduction	
Support for Teaching:	
Professional Development	
Program Evaluation	
Classroom Support	
Expanded Course Offerings	

<b>Essentials for Excellence</b>	<b>27%</b>
School Site Programs	10.25%
Libraries	7.25%
Music/VAPA	6.25%
Instructional Technology	3.25%

<b>Effective Student Support</b>	<b>7%</b>
Student Achievement Strategies	
Counseling and Behavioral Health	

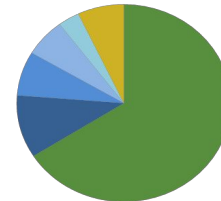
Measure Oversight, Communication, Translation, Community Engagement	2% of net receipts
--	-----------------------

## BSEP Measure E1

\$33 million to schools in  
2021-22

~20% of overall budget

8 Year Term: 2017-2025



# HQI Trajectory - Ending Fund Balance Analysis

Figures are for discussion purposes

1	Measure E1	YEAR 5 2021-2022	YEAR 6 2022-2023	YEAR 7 2023-2024	YEAR 8 2024-2025
2	COLA (Bay Area CPI Annual % Change)	2.00%	1.00%	1.00%	1.00%
3	Teacher Costs: Annual Step & Column	NA	1.00%	1.00%	1.00%
4	HQI Annual Revenue	21,221,046	21,433,256	21,647,589	21,864,065
5	HQI Indirect Cost	(1,091,046)	(1,161,683)	(1,173,299)	(1,185,032)
6	<b>HQI Available Amount</b>	<b>20,130,000</b>	<b>20,271,574</b>	<b>20,474,290</b>	<b>20,679,033</b>
7	Class Size Reduction Total Budgeted	15,225,029	15,377,279	15,531,052	15,686,362
8	HQI Programs Total Budgeted Amount	5,622,305	5,672,066	5,722,325	5,773,086
9	<b>TOTAL HQI Budget</b>	<b>20,847,334</b>	<b>21,049,345</b>	<b>21,253,376</b>	<b>21,459,448</b>
10	Revenue Less Expenses	(717,334)	(777,771)	(779,087)	(780,416)
11	Beginning Fund Balance	3,206,148	2,488,814	1,711,043	931,957
12	<b>Ending Fund Balance</b>	<b>2,488,814</b>	<b>1,711,043</b>	<b>931,957</b>	<b>151,541</b>

Notes for this analysis:

2 - COLA (Bay Area CPI annual % change) kept flat at 1% for Years 6-8

3 - Teacher Salary increase at 1% and enrollment kept flat for Years 6-8 (step and column)

7 - 2021-22 Teacher Template as of March 5, 2021, updates pending

4-6, 8, 9, 11 - 2021-22 figures are from the Approved Annual BSEP Plans for FY 2021-22

# Budget Takeaways

- Measure E1 fund balance is determined by a number of variables, including the COLA (for revenue), based on the local CPI, and enrollment and salary/benefit costs (for expenses), which are not controlled by BSEP but by **external factors**.
- **Reductions are likely necessary** beginning in 2022-23 to ensure sustainability of fund balance and balance the budget going into new measure
- Frequent **updates to this analysis**, as information becomes known, will assist in planning for a balanced budget at the end of Measure E1
- Having a balanced budget at the end of Measure E1 will **prevent the need to increase taxes or rely on the General Fund**



## Questions and Discussion

- Does the Board have questions about the trajectory of BSEP Measure E1 funds, especially with regard to deficit spending and the need for a balanced budget at the end of Measure E1?
- Does the Board have initial questions about the planning process for the 2024 Measure?