

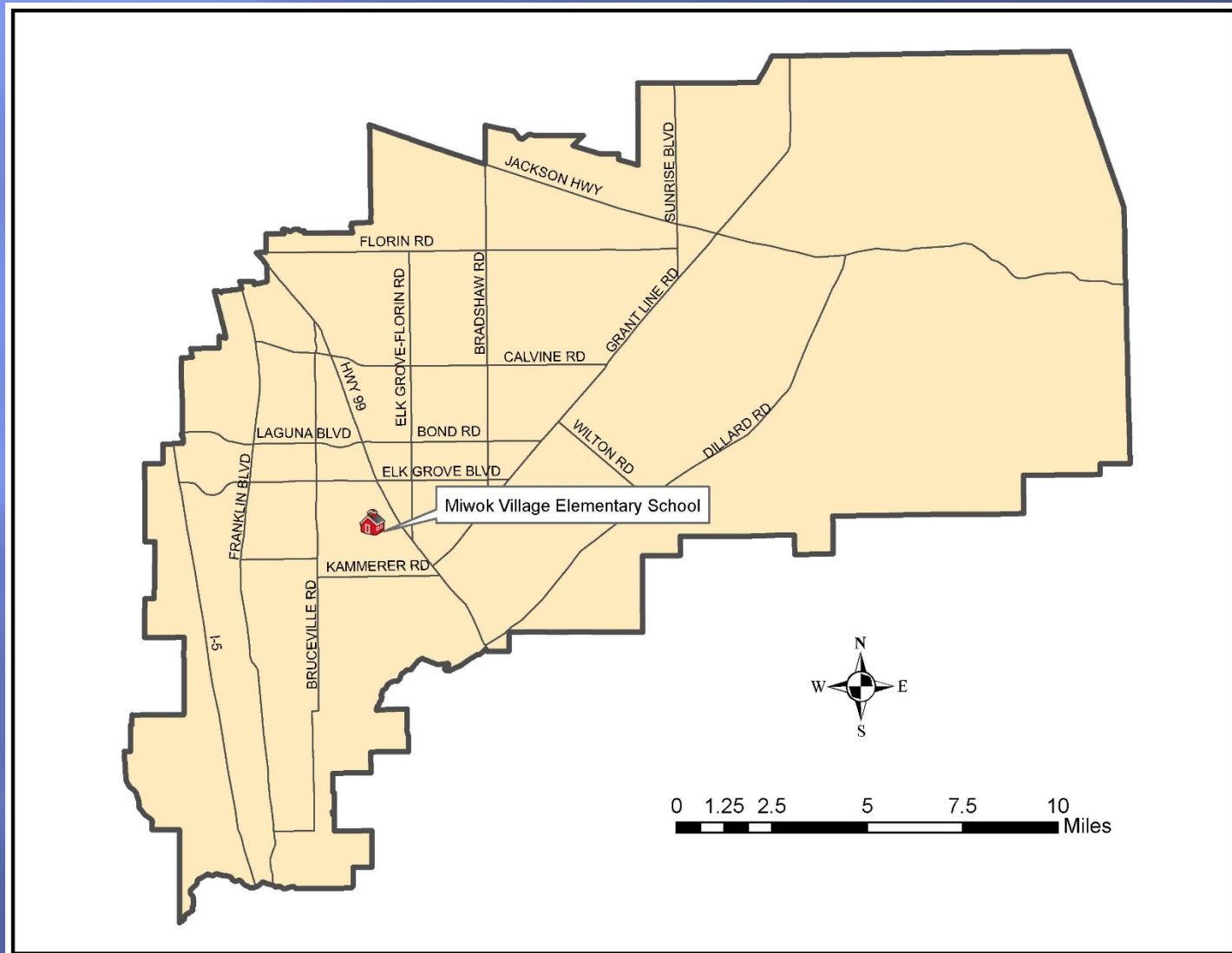
BOUNDARY ANALYSIS FOR MIWOK VILLAGE ELEMENTARY SCHOOL OPENING 2022-23

Board of Education Meeting
October 5, 2021

Presented by:

Robert Pierce, Deputy Superintendent, Business Services and Facilities
Dr. Bindy Grewal, Assistant Superintendent, PreK-6 Education
Susan Bell, Chief Facilities Officer, Facilities and Planning
Kim Williams, Planning Manager, Facilities and Planning

Miwok Village Elementary School Opening July 2022



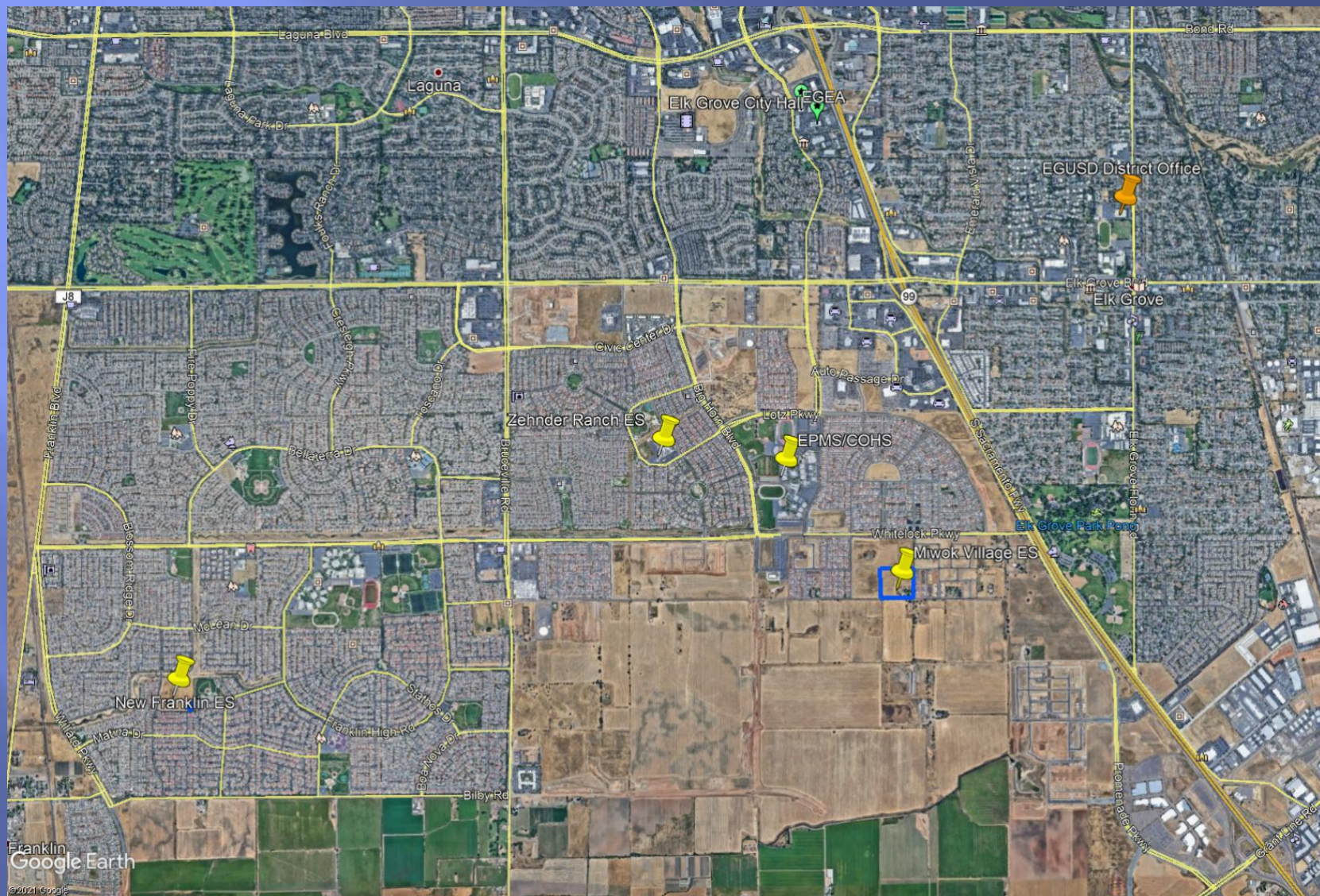
Miwok Village Elementary School

- ▣ Will be the District's 43rd Elementary School
- ▣ Construction is underway and is planned to be completed for the 2022-23 school year
- ▣ Located at the corner of Poppy Ridge Road and Lousada Drive, adjacent to future park
- ▣ 10 acre school site
- ▣ The District's first new school under the recently approved Educational Specifications

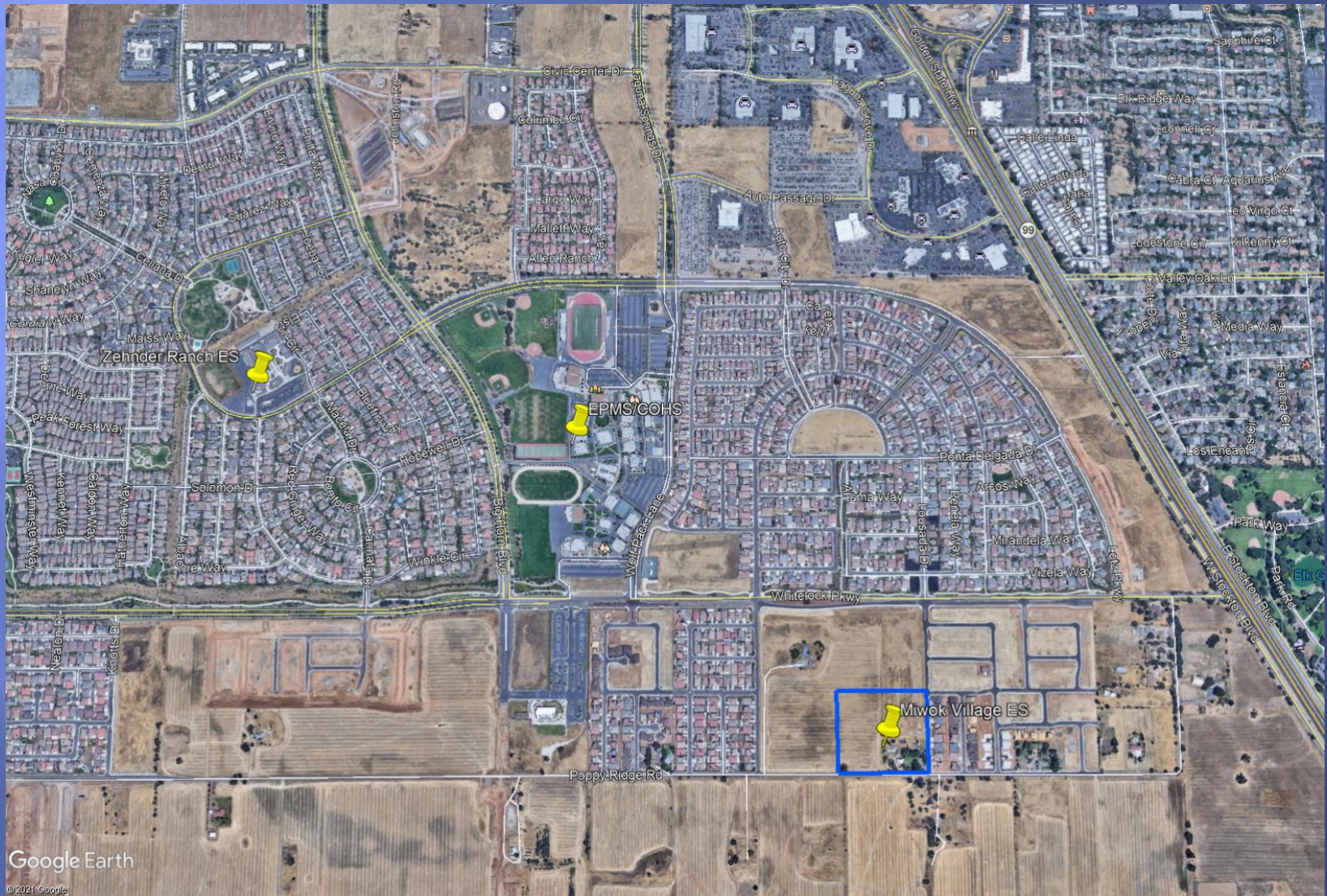
Establishing a Boundary for Miwok Village Elementary School

- ▣ Located within the current boundary of Zehnder Ranch Elementary School
- ▣ It is projected that approximately 1,925 TK-6 students will be residing within the Zehnder Ranch Elementary attendance area during the 2022-23 school year
- ▣ Extensive continued residential development expected in the region

Miwok Village Elementary School



Miwok Village Elementary School

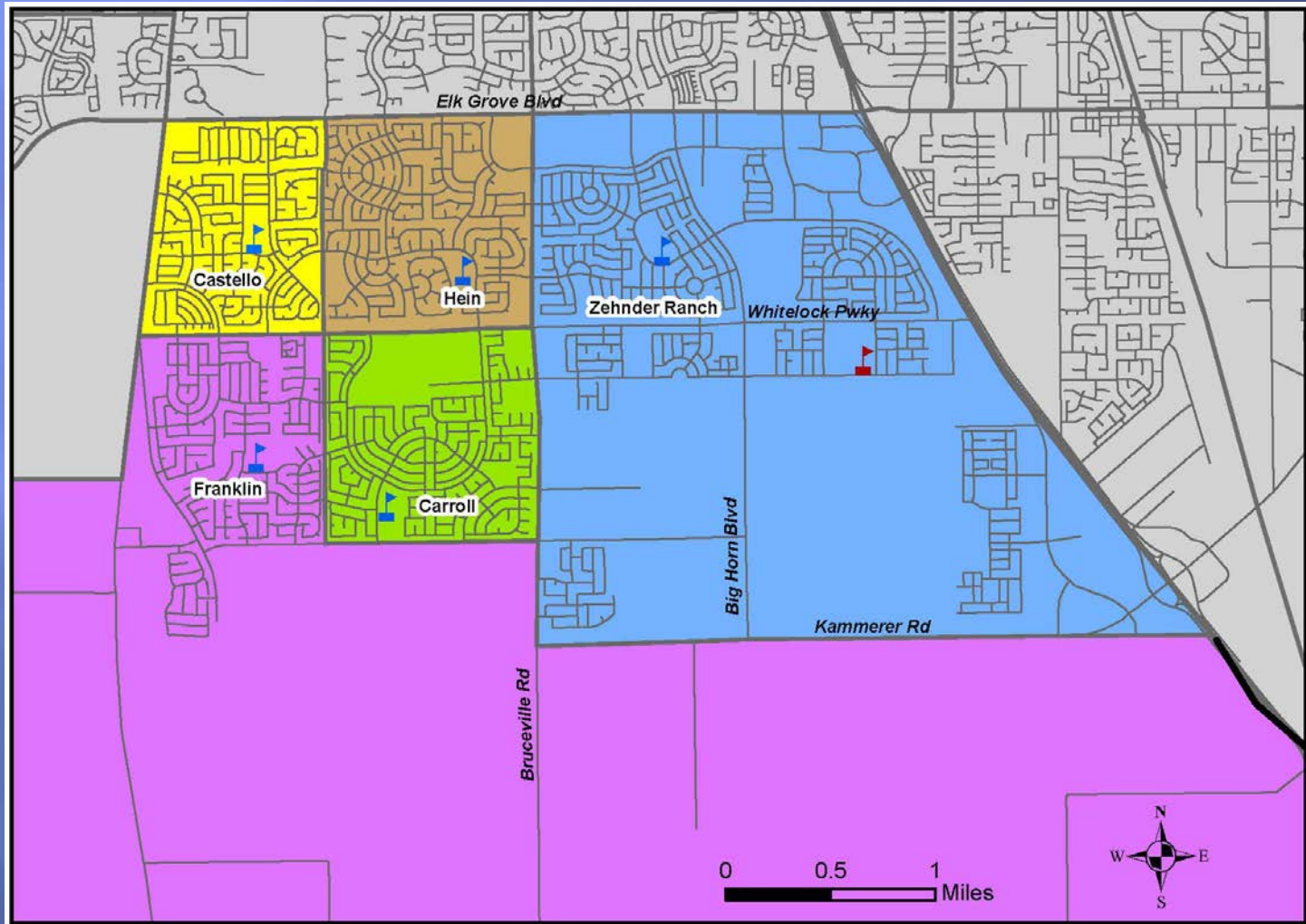


Boundary Criteria

In deciding where to place school boundaries the Board of Education seeks:

- ▣ To establish student enrollments appropriate to each school's capacity, program, and calendar
- ▣ To strive for a balanced enrollment within our schools over time
- ▣ To allow for future boundary changes as student housing needs change, considering growth within an attendance area and the disruption which may result from the changes
- ▣ To consider the rate of development activity and student population shifts occurring within existing and proposed attendance area boundaries
- ▣ To consider walking distances, safety issues, and school or public transportation routes for new and existing schools

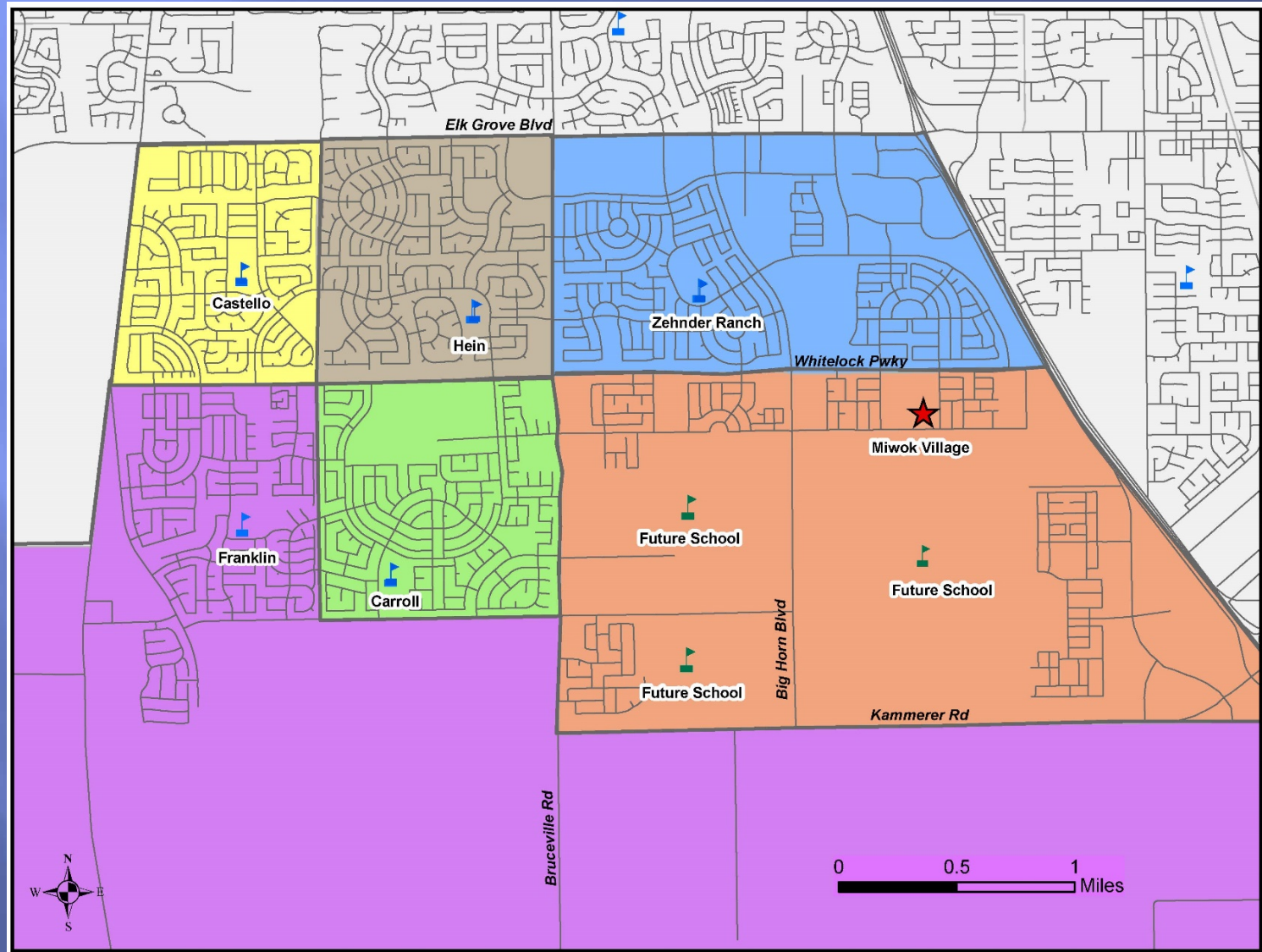
Southwest Region Current Boundaries



Current Residing Students

School	Current Residing TK-6 Students
Carroll	874
Castello	786
Franklin	958
Hein	878
Zehnder Ranch	1,404
TOTAL	4,900

Miwok Village Elementary School Alternative A



Southwest Region

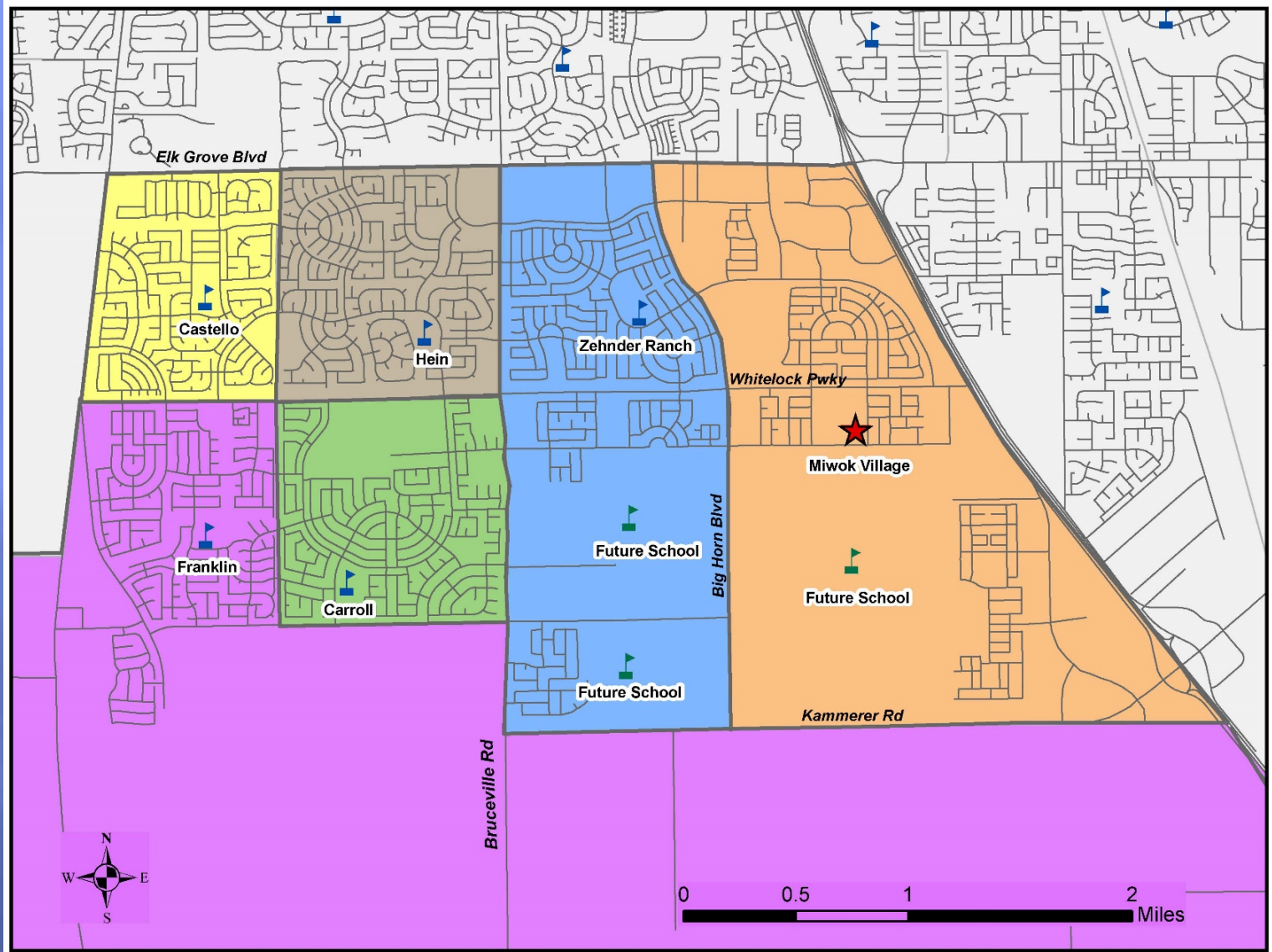
Projected Residing Students

Alternative A

(Based on Current Land Use Plans)

School	Estimated Residing TK-6 Students (Does not include SCC or PreK)			Capacity	
	2022	2023	2024	Traditional	YRE
Carroll	825	750	700	1,088	1,426
Castello	800	800	800	958	1,270
Franklin	950	975	1,000	958	1,270
Hein	825	775	775	958	1,270
Miwok Village	875	1,200	1,475	932	1,218
Zehnder Ranch	1,050	1,050	1,025	958	1,270
TOTAL	5,325	5,550	5,775	5,852	7,724

Laguna Ridge East Alternative B

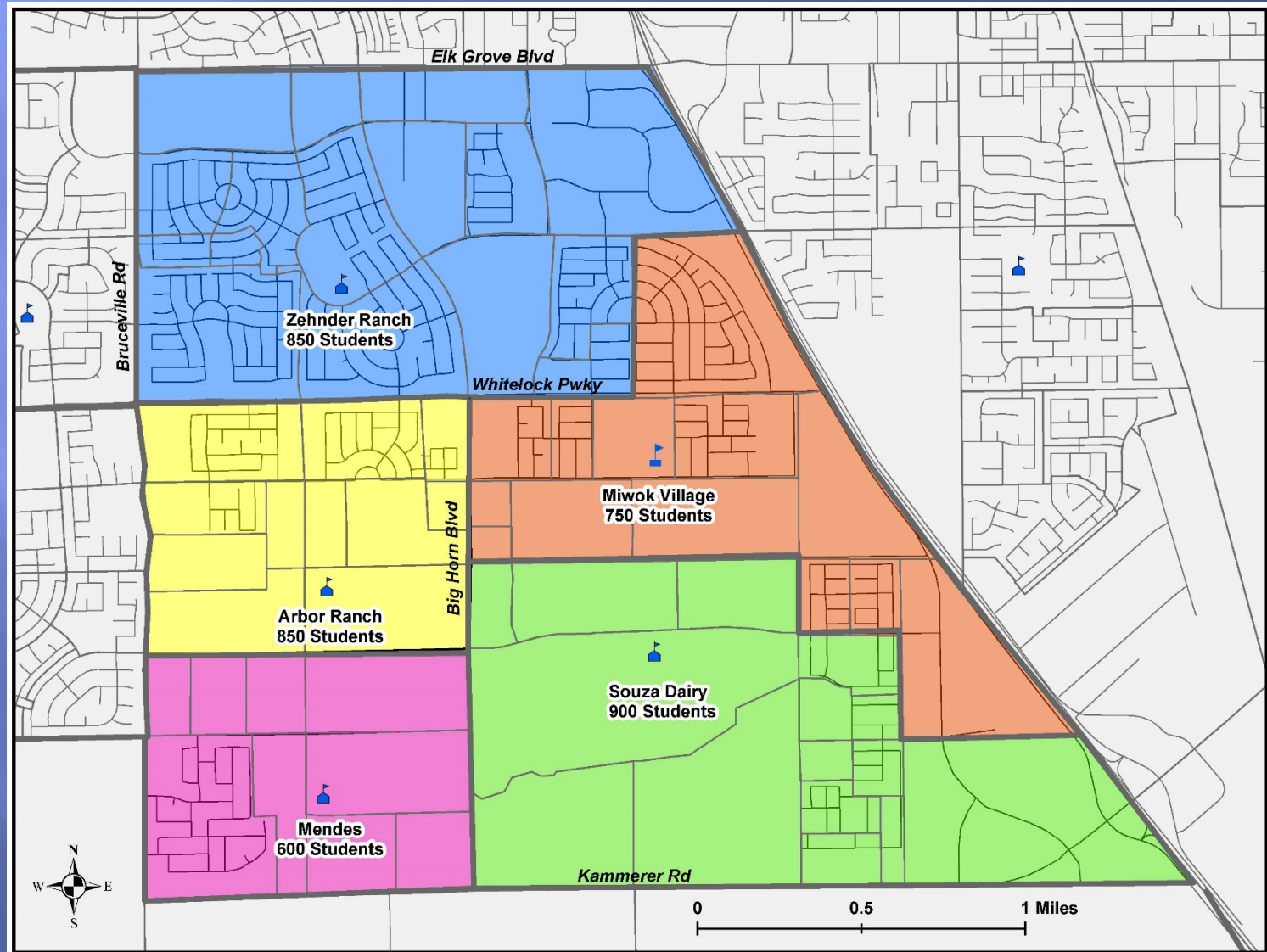


Southwest Region Projected Residing Students Alternative B (Based on Current Land Use Plans)

School	Estimated Residing TK-6 Students (Does not include SCC or PreK)			Capacity	
	2022	2023	2024	Traditional	YRE
Carroll	825	750	700	1,088	1,426
Castello	800	800	800	958	1,270
Franklin	950	975	1,000	958	1,270
Hein	825	775	775	958	1,270
Miwok Village	875	1,050	1,250	932	1,218
Zehnder Ranch	1,050	1,200	1,250	958	1,270
TOTAL	5,325	5,550	5,775	5,852	7,724

Southwest Region at Buildout

Sample Boundaries – Based on Current Land Use Plans



Community and Staff Input

- ▣ Meeting held with Zehnder Ranch Elementary School staff
- ▣ Community meetings held:
 - August 31, 2021
 - September 30, 2021
- ▣ All pertinent information, FAQ's and community presentations posted on the Zehnder Ranch Elementary School webpage and shared with parents/guardians

PROJECTED PROCESS & TIMELINE

Meetings & Communications	Dates
Process Presentation to Board of Education	August 10, 2021
Staff Meeting - Zehnder Ranch Elementary	August 31, 2021
Community Meeting - Zehnder Ranch Elementary	August 31, 2021
Community Meeting - Zehnder Ranch Elementary	September 30, 2021
Board Action - Boundary Approval Consideration	October 5, 2021
Continued Community Outreach	October 2021
Hire Principal and Secretary	October/November 2021
Student Registration	January 2022
Hire Lead Custodian	April 2022
Staffing <ul style="list-style-type: none"> • Advertising • Interviewing • Hiring 	Spring 2022
Miwok Village Elementary School Opens	July 2022

Recommendation for Miwok Village Elementary School

- ▣ Alternative A
 - Families do not need to cross Whitelock Parkway
 - More consistent with long term boundaries for the region resulting in less change for families
- ▣ Allow current 4th and 5th graders and their siblings the option of remaining at Zehnder Ranch Elementary School
- ▣ Allow students who reside in the current Zehnder Ranch Elementary School boundary that have been offloaded to another school the option of remaining at the offload school

QUESTIONS?

FEEDBACK?

