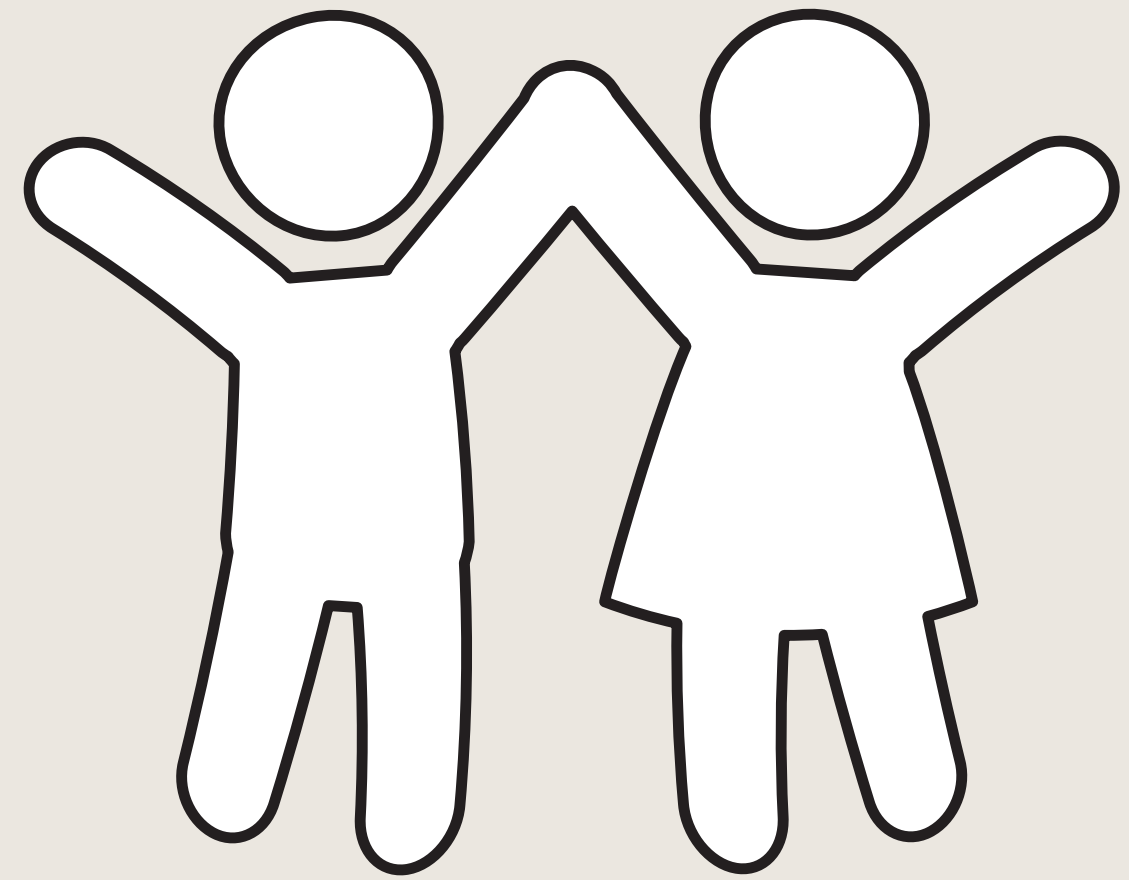
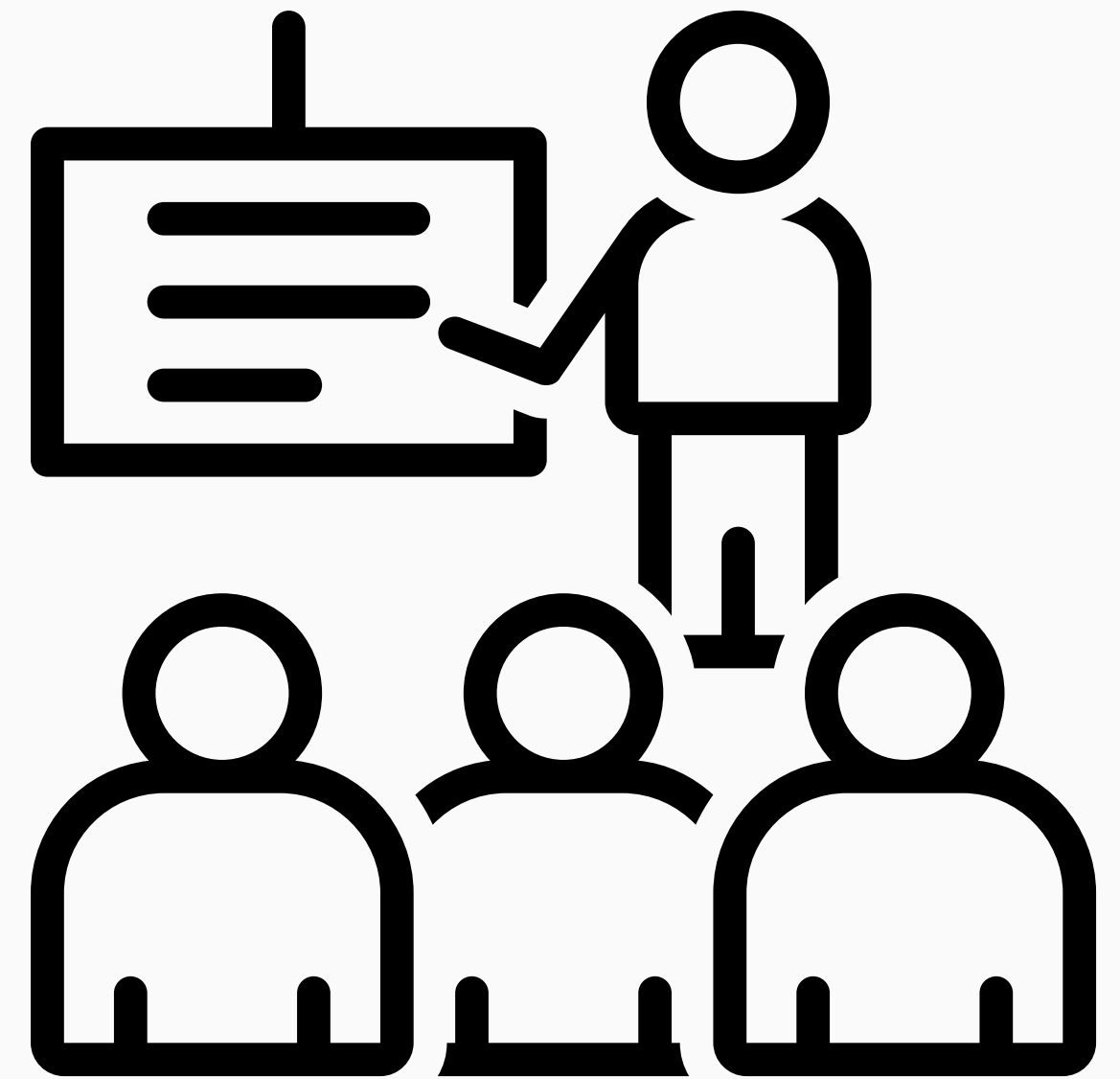


Annex



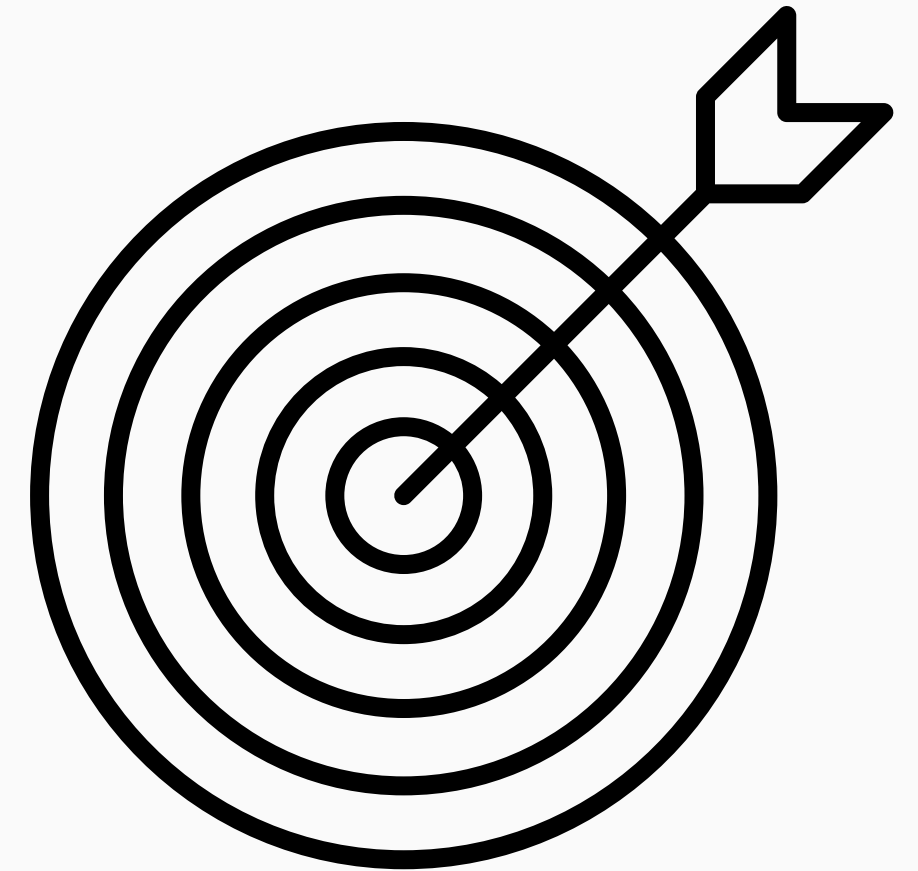
Tonight's Presentation

- Our Mission
- Program Overview
- After School & Safety Grant ASES
- Camps
- Professional Development
- Questions



Our Mission

The Annex nurtures the academic and emotional success of students in a safe respectful, and responsible environment. Students are well cared for by staff who are passionate about providing diverse and developmentally appropriate opportunities that enrich learning.



Program Overview

Staff

- 47 Annex Employees
 - 1 Principal on Special Assignment
 - 1 Coordinator
 - 2 Administrative Assistants
 - 18 Lead Teachers
 - 25 Teachers and Assistants

Registration

- Online
- Enrollment Support Nights
- Bilingual Support

Program Componentets

- Academic
- Enrichment
- Nutritious Snack

Professional Development

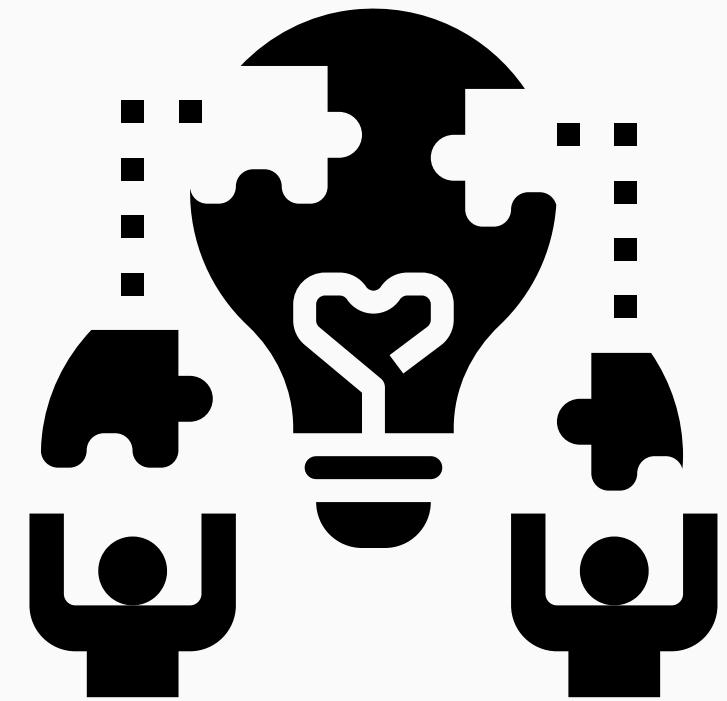
- 2 Annex-wide PD Days
- Monthly Lead Teacher Staff Meetings
- CPR Certification

Annex Enrollment 21-22		
	AM	PM
Audubon	9	49
Baywood	19	61
Beach Park	6	24
Beresford	13	33
Brewer Island	5	27
College Park	6	39
Fiesta Gardens	20	56
Foster City	5	37
George Hall	18	59
Highlands	16	39
Laurel	19	51
LEAD	10	80
Meadow Heights	5	30
North Shoreview	3	36
Park	6	31
Parkside	4	39
Sunnybrae	23	60
Total Enrollment	187	751

After School Education & Safety Grant (ASES)

- State grant awarded from Proposition 49
- Provides subsidized after school child care

ASES Enrollment 21-22		
	Enrolled	Capacity
Fiesta Gardens	40	40
George Hall	15	47
LEAD	74	80
Sunnybrae	53	60
Total ASES Enrollment	182	227



Considerations for 22-23

👤 Staffing

- Shortage
- Active recruitment
- Impacts ability to serve need

👤 Cost

Annex Program Fees		
	19-20	21-22
AM only	\$226	\$275
PM only	\$494	\$700
AM/PM	\$594	\$850

👤 District Support

- Home-school connection
- Footsteps2Brilliance