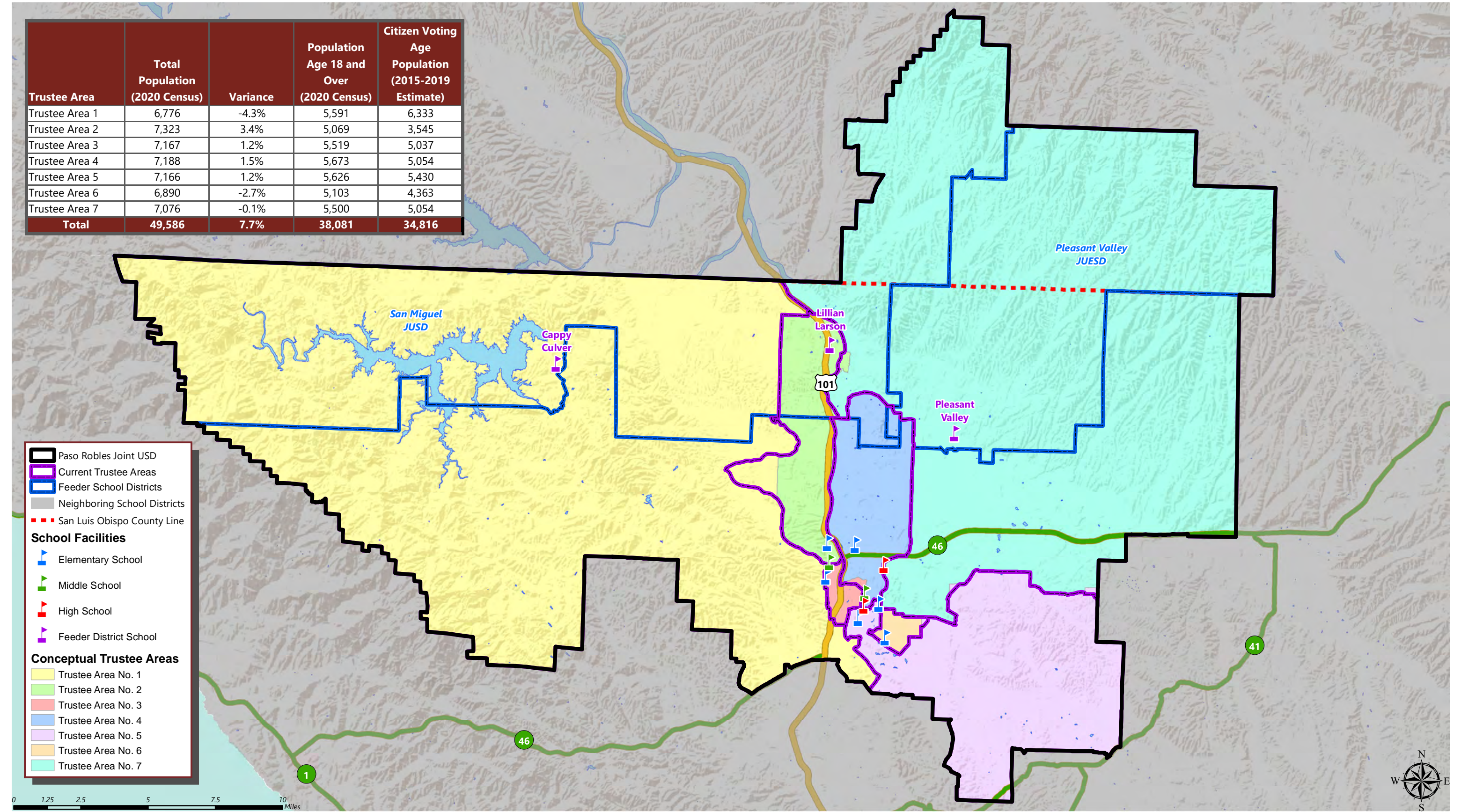


Trustee Area	Total Population (2020 Census)	Variance	Population Age 18 and Over (2020 Census)	Citizen Voting Age Population (2015-2019 Estimate)
Trustee Area 1	6,776	-4.3%	5,591	6,333
Trustee Area 2	7,323	3.4%	5,069	3,545
Trustee Area 3	7,167	1.2%	5,519	5,037
Trustee Area 4	7,188	1.5%	5,673	5,054
Trustee Area 5	7,166	1.2%	5,626	5,430
Trustee Area 6	6,890	-2.7%	5,103	4,363
Trustee Area 7	7,076	-0.1%	5,500	5,054
Total	49,586	7.7%	38,081	34,816





PASO ROBLES JOINT UNIFIED SCHOOL DISTRICT

CONCEPTUAL TRUSTEE AREAS - SCENARIO 1

Total Population:	49,586	Ideal Population	7,084	Variance:	7.7%
-------------------	--------	------------------	-------	-----------	------

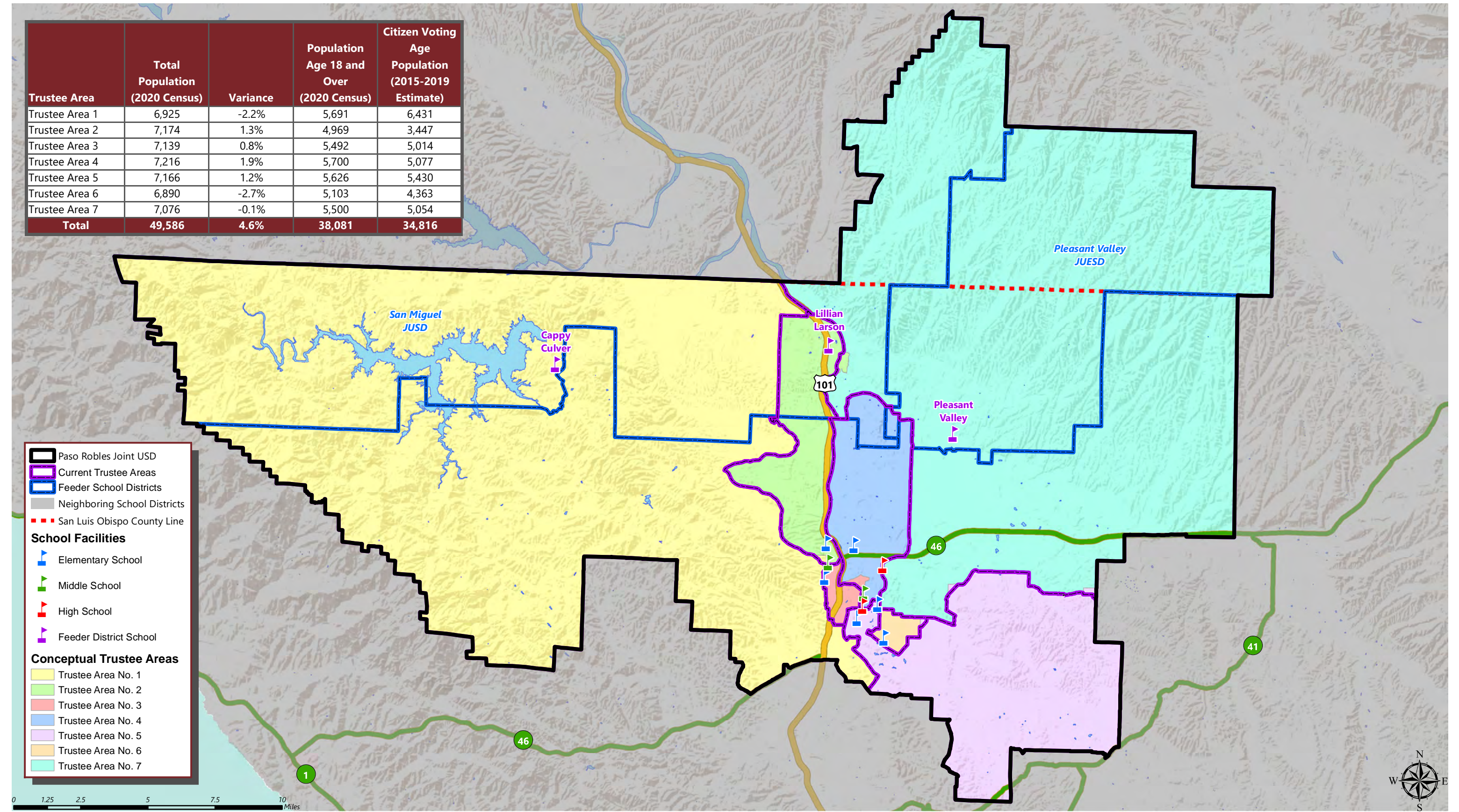
Total Population (2020 Census)							
	Trustee Area 1	Trustee Area 2	Trustee Area 3	Trustee Area 4	Trustee Area 5	Trustee Area 6	Trustee Area 7
Population	6,776	7,323	7,167	7,188	7,166	6,890	7,076
Population Variance	-308	239	83	104	82	-194	-8
	-4.3%	3.4%	1.2%	1.5%	1.2%	-2.7%	-0.1%
Hispanic/Latino	17.2%	60.5%	38.9%	22.2%	24.9%	46.0%	26.9%
White	75.7%	32.9%	51.4%	68.3%	65.9%	46.1%	65.1%
Black/ African American	0.5%	1.1%	2.1%	1.3%	0.9%	1.5%	0.7%
American Indian/ Alaska Native	0.6%	0.5%	0.4%	0.4%	0.3%	0.3%	0.6%
Asian	1.1%	1.4%	2.4%	2.5%	1.8%	2.0%	1.4%
Native Hawaiian/ Other Pacific Islander	0.1%	0.1%	0.2%	0.2%	0.3%	0.3%	0.1%
Other	0.4%	0.4%	0.6%	0.6%	0.7%	0.5%	0.6%
Two or More Races	4.3%	3.1%	4.0%	4.4%	5.3%	3.2%	4.7%

Population 18 and Over (2020 Census)							
	Trustee Area 1	Trustee Area 2	Trustee Area 3	Trustee Area 4	Trustee Area 5	Trustee Area 6	Trustee Area 7
Population	5,591	5,069	5,519	5,673	5,626	5,103	5,500
Hispanic/Latino	14.5%	54.6%	34.2%	19.8%	20.9%	41.2%	22.8%
White	79.0%	38.1%	55.8%	71.2%	70.5%	50.7%	69.5%
Black/ African American	0.4%	1.2%	2.5%	1.4%	1.0%	2.0%	0.7%
American Indian/ Alaska Native	0.6%	0.7%	0.4%	0.4%	0.4%	0.2%	0.7%
Asian	1.2%	1.6%	2.7%	2.7%	2.0%	2.3%	1.5%
Native Hawaiian/ Other Pacific Islander	0.1%	0.1%	0.2%	0.2%	0.3%	0.4%	0.1%
Other	0.4%	0.5%	0.5%	0.7%	0.5%	0.2%	0.6%
Two or More Races	3.7%	3.1%	3.7%	3.5%	4.6%	2.9%	4.1%

Citizens by Voting Age Population Estimate (2015-2019)							
	Trustee Area 1	Trustee Area 2	Trustee Area 3	Trustee Area 4	Trustee Area 5	Trustee Area 6	Trustee Area 7
Population	6,333	3,545	5,037	5,054	5,430	4,363	5,054
Hispanic/Latino	14.5%	41.3%	26.1%	16.7%	19.8%	29.7%	15.2%
White	78.7%	54.0%	67.1%	78.2%	76.4%	65.9%	80.1%
Black/ African American	4.3%	0.7%	4.0%	0.3%	0.0%	1.1%	0.2%
American Indian/ Alaska Native	0.4%	0.5%	0.3%	1.1%	0.1%	0.1%	2.6%
Asian	0.7%	1.5%	2.2%	2.8%	2.1%	2.2%	0.7%
Native Hawaiian/ Other Pacific Islander	0.0%	0.0%	0.0%	0.0%	0.0%	0.0%	0.0%
Other	N/A	N/A	N/A	N/A	N/A	N/A	N/A
Two or More Races	1.3%	2.1%	0.4%	1.0%	1.5%	0.9%	1.2%



Trustee Area	Total Population (2020 Census)	Variance	Population Age 18 and Over (2020 Census)	Citizen Voting Age Population (2015-2019 Estimate)
Trustee Area 1	6,925	-2.2%	5,691	6,431
Trustee Area 2	7,174	1.3%	4,969	3,447
Trustee Area 3	7,139	0.8%	5,492	5,014
Trustee Area 4	7,216	1.9%	5,700	5,077
Trustee Area 5	7,166	1.2%	5,626	5,430
Trustee Area 6	6,890	-2.7%	5,103	4,363
Trustee Area 7	7,076	-0.1%	5,500	5,054
Total	49,586	4.6%	38,081	34,816





PASO ROBLES JOINT UNIFIED SCHOOL DISTRICT

CONCEPTUAL TRUSTEE AREAS - SCENARIO 2

Total Population:	49,586	Ideal Population:	7,084	Variance:	4.6%
-------------------	--------	-------------------	-------	-----------	------

Total Population (2020 Census)							
	Trustee Area 1	Trustee Area 2	Trustee Area 3	Trustee Area 4	Trustee Area 5	Trustee Area 6	Trustee Area 7
Population	6,925	7,174	7,139	7,216	7,166	6,890	7,076
Population Variance	-159	90	55	132	82	-194	-8
	-2.2%	1.3%	0.8%	1.9%	1.2%	-2.7%	-0.1%
Hispanic/Latino	17.8%	60.8%	38.8%	22.4%	24.9%	46.0%	26.9%
White	74.9%	32.8%	51.5%	68.1%	65.9%	46.1%	65.1%
Black/ African American	0.5%	1.1%	2.2%	1.3%	0.9%	1.5%	0.7%
American Indian/ Alaska Native	0.6%	0.4%	0.4%	0.4%	0.3%	0.3%	0.6%
Asian	1.3%	1.3%	2.4%	2.5%	1.8%	2.0%	1.4%
Native Hawaiian/ Other Pacific Islander	0.1%	0.1%	0.2%	0.2%	0.3%	0.3%	0.1%
Other	0.4%	0.4%	0.6%	0.7%	0.7%	0.5%	0.6%
Two or More Races	4.3%	3.0%	4.0%	4.4%	5.3%	3.2%	4.7%

Population 18 and Over (2020 Census)							
	Trustee Area 1	Trustee Area 2	Trustee Area 3	Trustee Area 4	Trustee Area 5	Trustee Area 6	Trustee Area 7
Population	5,691	4,969	5,492	5,700	5,626	5,103	5,500
Hispanic/Latino	14.9%	55.0%	34.1%	20.0%	20.9%	41.2%	22.8%
White	78.4%	38.0%	56.0%	71.0%	70.5%	50.7%	69.5%
Black/ African American	0.4%	1.2%	2.5%	1.4%	1.0%	2.0%	0.7%
American Indian/ Alaska Native	0.7%	0.6%	0.4%	0.4%	0.4%	0.2%	0.7%
Asian	1.4%	1.4%	2.7%	2.7%	2.0%	2.3%	1.5%
Native Hawaiian/ Other Pacific Islander	0.1%	0.1%	0.2%	0.2%	0.3%	0.4%	0.1%
Other	0.4%	0.5%	0.5%	0.7%	0.5%	0.2%	0.6%
Two or More Races	3.7%	3.1%	3.7%	3.5%	4.6%	2.9%	4.1%

Citizens by Voting Age Population Estimate (2015-2019)							
	Trustee Area 1	Trustee Area 2	Trustee Area 3	Trustee Area 4	Trustee Area 5	Trustee Area 6	Trustee Area 7
Population	6,431	3,447	5,014	5,077	5,430	4,363	5,054
Hispanic/Latino	14.7%	41.7%	26.0%	16.8%	19.8%	29.7%	15.2%
White	78.7%	53.4%	67.3%	78.0%	76.4%	65.9%	80.1%
Black/ African American	4.2%	0.7%	4.0%	0.3%	0.0%	1.1%	0.2%
American Indian/ Alaska Native	0.4%	0.5%	0.3%	1.1%	0.1%	0.1%	2.6%
Asian	0.7%	1.5%	2.2%	2.8%	2.1%	2.2%	0.7%
Native Hawaiian/ Other Pacific Islander	0.0%	0.0%	0.0%	0.0%	0.0%	0.0%	0.0%
Other	N/A	N/A	N/A	N/A	N/A	N/A	N/A
Two or More Races	1.3%	2.2%	0.3%	1.0%	1.5%	0.9%	1.2%