



Preschool Programs

San Mateo-Foster City School District

Jan.13.2022



Program Overview



FUNDING

- Fee-based
- CSPP
- CCTR
- Inclusion
- PIP
- QRIS

PROGRAMS

- Inclusion
- Blended
Montessori
- Language
Immersion
- STEAM
- Play-based

SITES

- Fiesta Gardens
- George Hall
- LEAD
- North Shoreview
- San Mateo Park
- Parkside
- Turnbull

STAFF

- 2 Administrator
- 3 Office Staff
- 2 Turnbull
Custodians
- 41 Teachers &
Assistants

Enrollment Defined

ENROLLMENT

Total number of students actively attending

CAPACITY

Total number of licensed slots



21-22 Enrollment



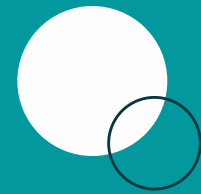
SUBSIDIZED

Turnbull: 118

LEAD: 16

CURRENT YEAR: 134

TYPICAL CAPACITY: 210



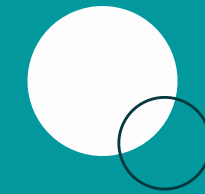
BLENDED

North Shoreview: 16

Parkside: 16

CURRENT YEAR: 32

TYPICAL CAPACITY: 48



FEEBASED

Turnbull: 80 (Mandarin Immersion)

Fiesta Garden: 15 (Spanish Immersion)

George Hall: 12 (+6 *SpEd*)

Park: 10 (+3 *SpEd*)

CURRENT YEAR: 117 (+9 *SpEd*)

TYPICAL CAPACITY: 179 (+17 *SpEd*)



UPCOMING



**DENTAL
SERVICE**



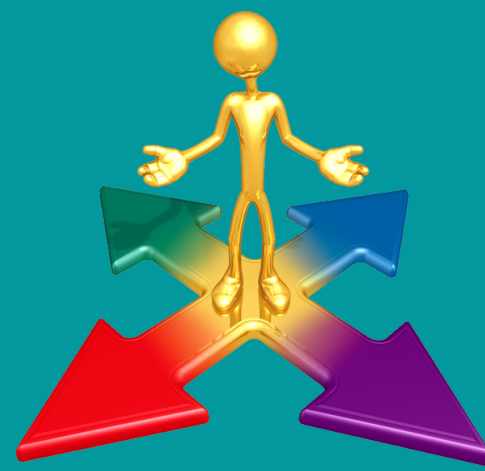
**BLENDED
INCLUSION**



**BLENDED
MONTESSORI**



**REBUILDING
PROGRAM**



EXPANSION

**CDE RFA
AVAILABILITY**

**CDE REVIEW
PROCESS**

**APPLICABLE DATA
COLLECTION &
APPLICATION
PROCESS**

**LICENSING,
STAFFING,
PURCHASING,
ENROLLING**

“We are a box of crayons
each of us unique,
but when we get together
the picture is complete.”



“