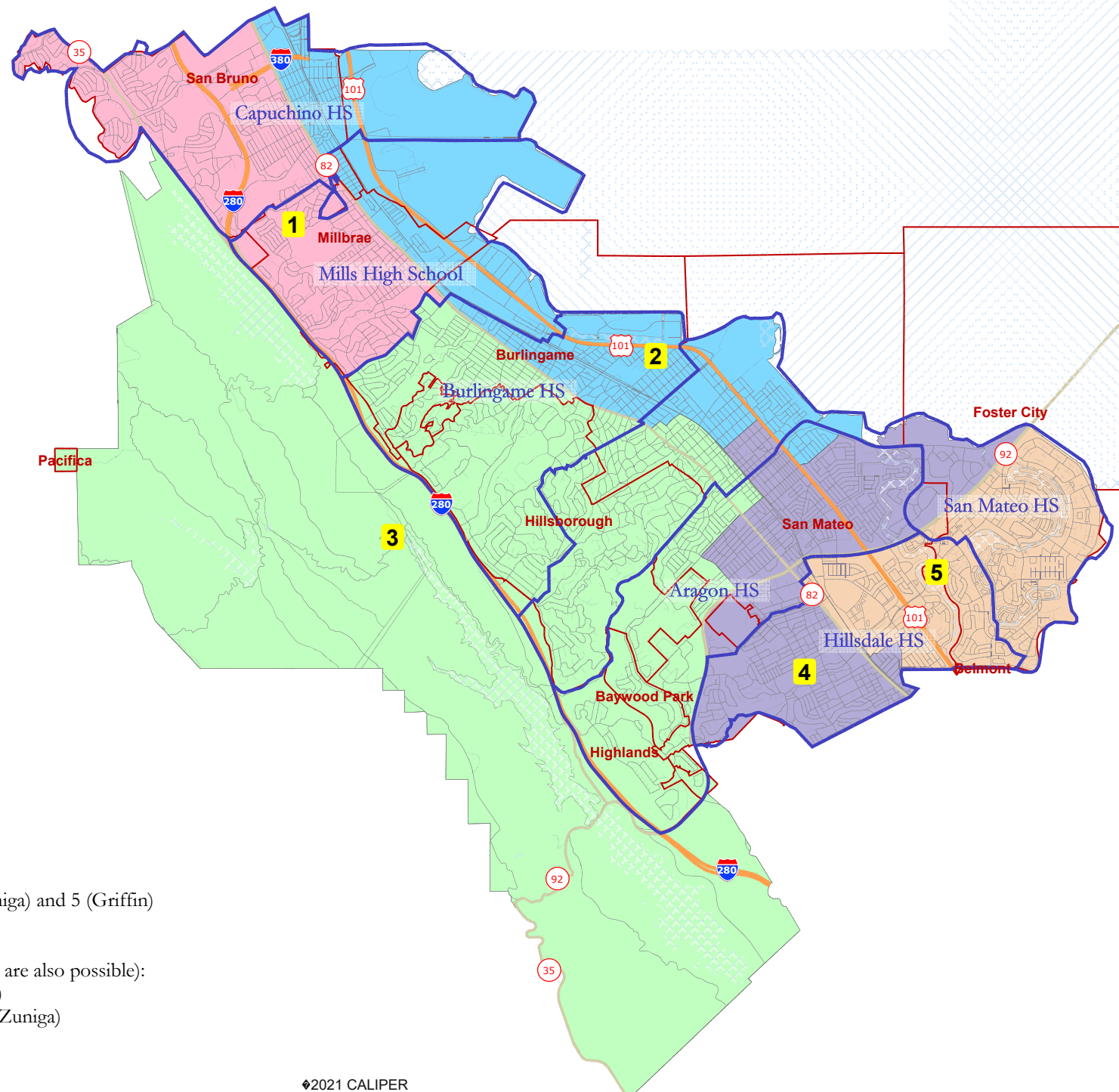
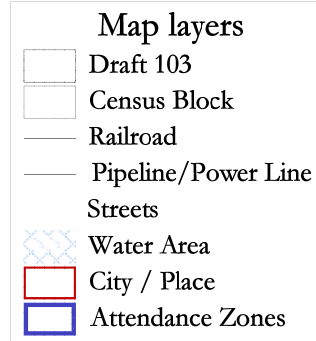


Draft 103

Compact Blending of Attendance Zones



Proposed Election Sequence:

2022: Areas 2 (Land & Dwyer), 4 (Hanley & Zuniga) and 5 (Griffin)
2024: Areas 1 (vacant) and 3 (vacant)

Alternative Election Sequence (other alternatives are also possible):

2022: Areas 1 (vacant), 3 (vacant), and 5 (Griffin)
2024: Areas 2 (Land & Dwyer) and 4 (Hanley & Zuniga)

Draft 103							
District		1	2	3	4	5	Total
	Total Pop	50,037	49,554	50,186	49,990	50,425	250,192
	Deviation from ideal	-1	-484	148	-48	387	871
	% Deviation	0.00%	-0.97%	0.30%	-0.10%	0.77%	1.74%
Total Pop	% Hisp	15.3%	35%	11%	24%	13%	20%
	% NH White	33%	31%	51%	41%	32%	38%
	% NH Black	2%	2%	1%	2%	2%	2%
	% Asian-American	45%	25%	34%	29%	49%	36%
Citizen Voting Age Pop	Total	33,864	30,746	33,229	31,202	29,431	158,473
	% Hisp	13%	27%	7%	15%	12%	15%
	% NH White	44%	42%	62%	54%	45%	50%
	% NH Black	1%	3%	1%	3%	3%	2%
	% Asian/Pac.Isl.	40%	27%	29%	27%	39%	32%
Voter Registration (Nov 2020)	Total	31,136	25,138	33,818	29,467	26,839	146,398
	% Latino est.	17%	25%	7%	15%	11%	14%
	% Spanish-Surnamed	15%	23%	6%	14%	10%	13%
	% Asian-Surnamed	23%	14%	19%	15%	26%	20%
	% Filipino-Surnamed	4%	3%	1%	2%	2%	3%
	% NH White est.	56%	56%	72%	65%	56%	61%
	% NH Black	1%	3%	1%	3%	4%	2%
Voter Turnout (Nov 2020)	Total	26,767	20,631	29,909	25,329	23,255	125,891
	% Latino est.	16%	24%	6%	14%	10%	14%
	% Spanish-Surnamed	15%	22%	6%	13%	10%	13%
	% Asian-Surnamed	23%	14%	19%	15%	26%	19%
	% Filipino-Surnamed	4%	3%	1%	2%	2%	2%
	% NH White est.	56%	58%	72%	66%	57%	62%
	% NH Black	1%	3%	1%	3%	4%	2%
Voter Turnout (Nov 2018)	Total	19,511	14,638	23,561	19,445	16,995	94,150
	% Latino est.	15%	21%	5%	12%	9%	12%
	% Spanish-Surnamed	14%	20%	5%	12%	9%	11%
	% Asian-Surnamed	19%	11%	16%	13%	22%	16%
	% Filipino-Surnamed	3%	3%	1%	2%	2%	2%
	% NH White est.	61%	63%	77%	70%	61%	67%
	% NH Black est.	2%	3%	1%	3%	4%	2%
ACS Pop. Est.	Total	48,349	51,397	49,206	47,240	50,528	246,720
Age	age0-19	21%	24%	24%	23%	23%	23%
	age20-60	55%	59%	49%	55%	57%	55%
	age60plus	24%	16%	27%	22%	20%	22%
Immigration	immigrants	36%	38%	28%	32%	43%	36%
	naturalized	67%	52%	62%	56%	47%	56%
Language spoken at home	english	55%	47%	68%	61%	48%	56%
	spanish	9%	29%	7%	13%	9%	14%
	asian-lang	27%	14%	17%	18%	27%	20%
	other lang	9%	11%	8%	8%	16%	10%
Language Fluency	Speaks Eng. "Less than Very Well"	16%	24%	11%	15%	17%	17%
Education (among those age 25+)	hs-grad	32%	32%	20%	31%	23%	28%
	bachelor	33%	27%	34%	32%	34%	32%
	graduatedegree	19%	18%	35%	23%	32%	25%
Child in Household	child-under18	30%	33%	33%	31%	35%	32%
Pct of Pop. Age 16+	employed	67%	76%	64%	69%	70%	69%
Household Income	income 0-25k	9%	10%	7%	9%	7%	8%
	income 25-50k	10%	14%	9%	10%	8%	10%
	income 50-75k	9%	13%	7%	10%	7%	9%
	income 75-200k	46%	45%	33%	41%	43%	42%
	income 200k-plus	26%	18%	44%	30%	35%	31%
Housing Stats	single family	66%	45%	64%	66%	54%	59%
	multi-family	34%	55%	36%	34%	46%	41%
	rented	35%	59%	32%	40%	46%	42%
	owned	65%	41%	68%	60%	54%	58%
Total population data from the 2020 Decennial Census.							
Surname-based Voter Registration and Turnout data from the California Statewide Database.							
Latino voter registration and turnout data are Spanish-surname counts adjusted using Census Population Department undercount estimates. NH White and NH Black registration and turnout counts estimated by NDC. Citizen Voting Age Pop., Age, Immigration, and other demographics from the 2015-2019 American Community Survey and Special Tabulation 5-year data.							