



## ► 2020 CENSUS AND REDISTRICTING

SAN MATEO-FOSTER CITY SCHOOL  
DISTRICT

FEBRUARY 10, 2022



**COOPERATIVE**  
**STRATEGIES**

ASSESS • PLAN • FUND • BUILD

## ► DISTRICT DEMOGRAPHICS

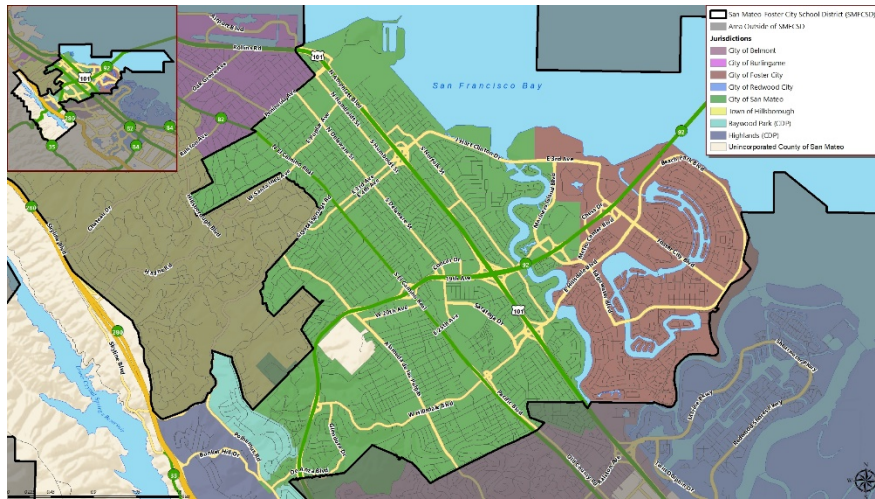
### 2020 CENSUS DATA



- Validated redistricting data was finalized by the California Department of Finance on September 27, 2021.
- This data showed substantial changes in the area served by San Mateo-Foster City School District ("SMFCSD") from 2010 to 2020, including:
  - Overall population growth of over 11,568 (9%)
  - Total Variance of 9.75% based on 2020 Census (*In Compliance*)

Trustee Area	2010 Census		2020 Census		Change	
	Total	Variance	Total	Variance	Population	Percent
Trustee Area 1	27,167	5.2%	28,503	1.3%	1,336	4.9%
Trustee Area 2	26,310	1.9%	29,030	3.2%	2,720	10.3%
Trustee Area 3	25,522	-1.2%	27,834	-1.1%	2,312	9.1%
Trustee Area 4	25,020	-3.1%	26,287	-6.6%	1,267	5.1%
Trustee Area 5	25,080	-2.9%	29,013	3.1%	3,933	15.7%
<b>Total Population</b>	<b>129,099</b>	<b>8.3%</b>	<b>140,667</b>	<b>9.75%</b>	<b>11,568</b>	<b>9.0%</b>

# ► DISTRICT DEMOGRAPHICS 2020 CENSUS DATA

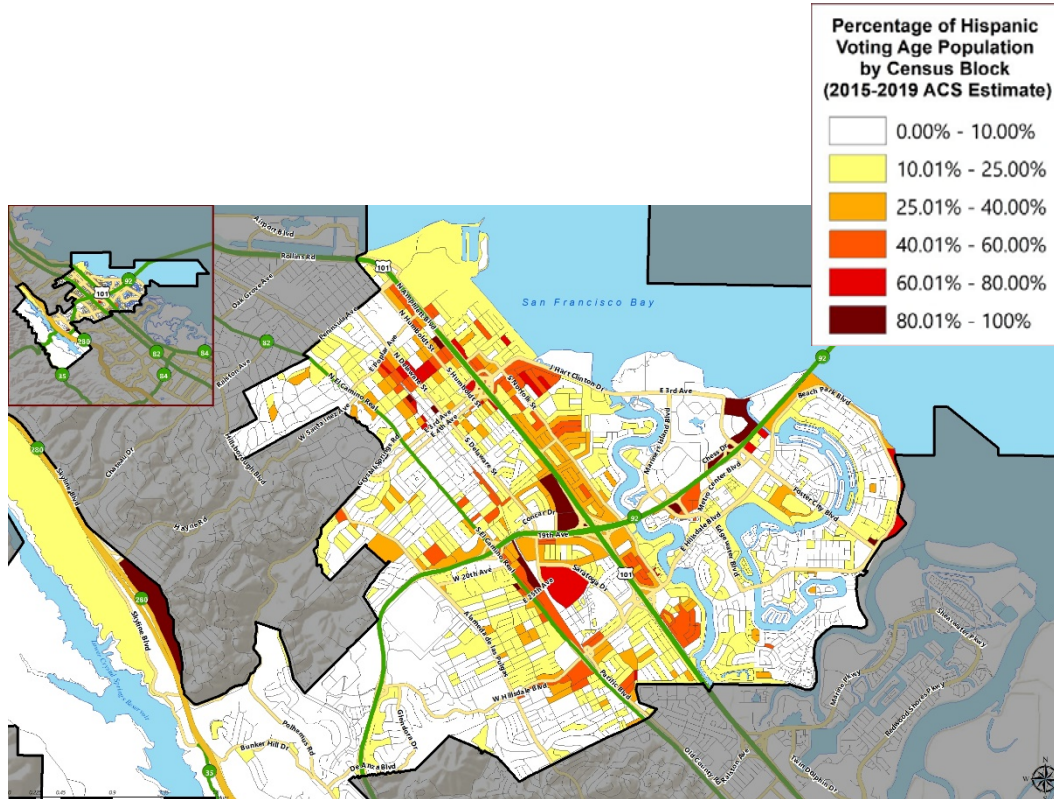


Population	Total Population		Age 18 and over	
	Total	%	Total	%
Hispanic/Latino	29,427	20.9%	21,362	19.0%
White	52,229	37.1%	44,494	39.7%
Black / African American	2,194	1.6%	1,907	1.7%
American Indian /Alaska Native	205	0.1%	165	0.1%
Asian	46,035	32.7%	37,630	33.6%
Native Hawaiian/ Pacific Islander	1,831	1.3%	1,412	1.3%
Other	1,167	0.8%	821	0.7%
Two or More Races	7,579	5.4%	4,356	3.9%
<b>Total</b>	<b>140,667</b>	<b>100%</b>	<b>112,147</b>	<b>100%</b>



## ► DISTRICT DEMOGRAPHICS

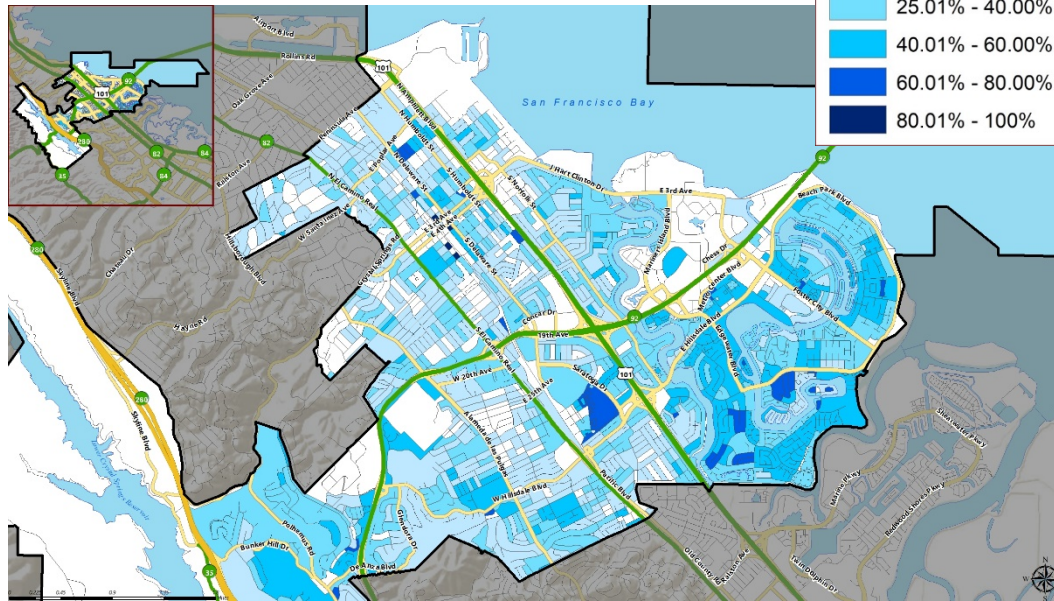
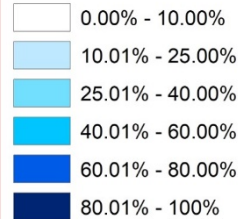
### CITIZEN VOTING AGE POPULATION ESTIMATES



Population	2015-2019 CVAP	
	Total	%
Hispanic/Latino	12,579	14.6%
White	43,628	50.6%
Black / African American	2,111	2.4%
American Indian / Alaska Native	173	0.2%
Asian	23,435	27.2%
Native Hawaiian/ Pacific Islander	1,394	1.6%
Two or More Races	2,847	3.3%
<b>Total</b>	<b>86,167</b>	<b>100%</b>

# ► DISTRICT DEMOGRAPHICS CITIZEN VOTING AGE POPULATION ESTIMATES

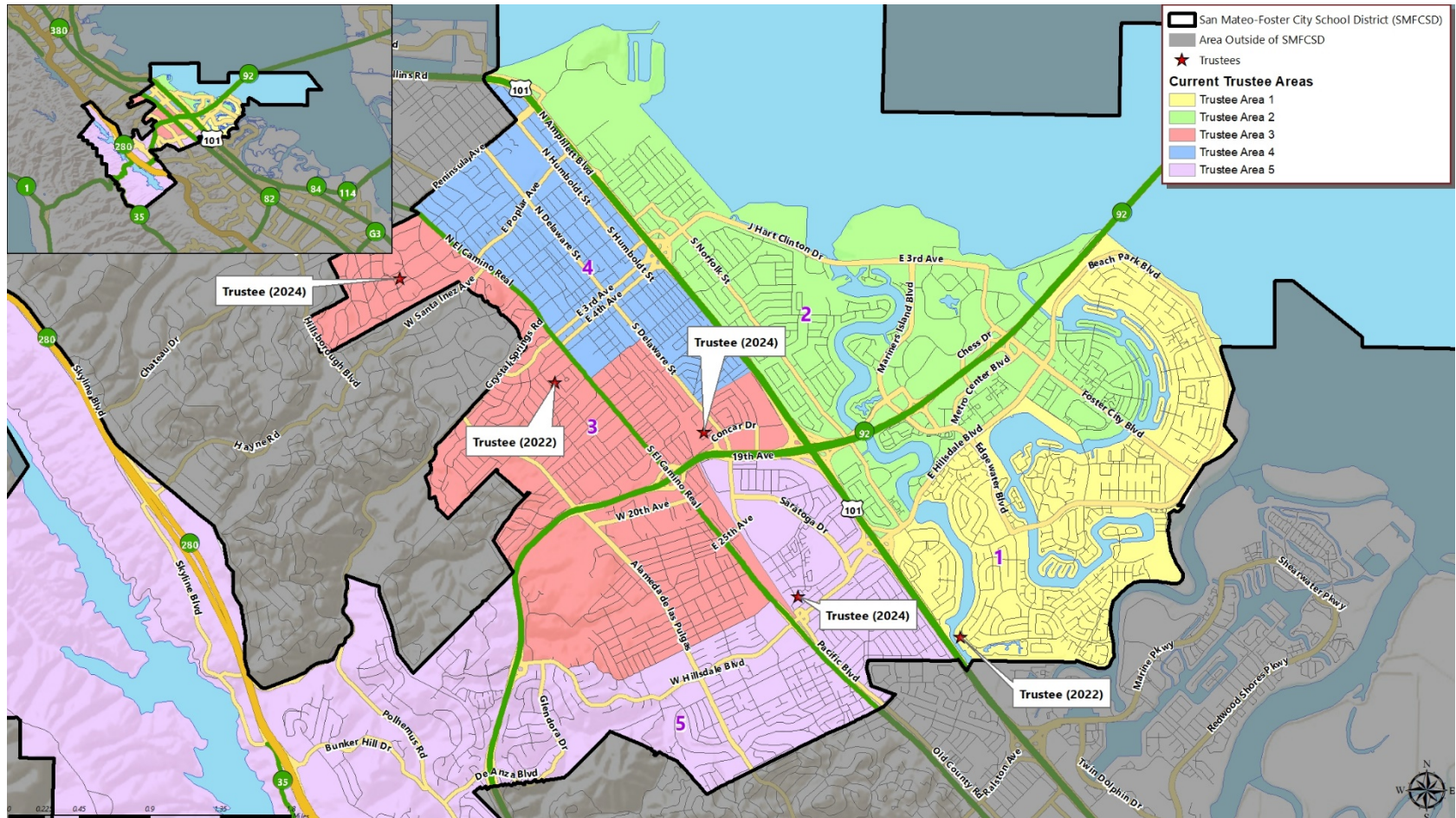
Percentage of Asian Voting Age Population by Census Block (2015-2019 ACS Estimate)



Population	2015-2019 CVAP	
	Total	%
Hispanic/Latino	12,579	14.6%
White	43,628	50.6%
Black / African American	2,111	2.4%
American Indian / Alaska Native	173	0.2%
Asian	23,435	27.2%
Native Hawaiian/ Pacific Islander	1,394	1.6%
Two or More Races	2,847	3.3%
<b>Total</b>	<b>86,167</b>	<b>100%</b>



## ► CURRENT TRUSTEE AREAS



## ► CURRENT TRUSTEE AREAS

	Census 2020 Total Population:		140,667		Ideal Trustee Area Size:		28,133		Total Variance:		9.75%	
TRUSTEE AREA	Trustee Area 1		Trustee Area 2		Trustee Area 3		Trustee Area 4		Trustee Area 5			
TP* vs. CVAP**	TP	CVAP	TP	CVAP	TP	CVAP	TP	CVAP	TP	CVAP		
Population	28,503	17,149	29,030	18,010	27,834	18,169	26,287	13,976	29,013	18,863		
Population Variance	1.3%	N/A	3.2%	N/A	-1.1%	N/A	-6.6%	N/A	3.1%	N/A		
Hispanic/Latino	10.9%	9.8%	21.7%	21.2%	15.8%	11.7%	38.8%	19.7%	18.7%	11.6%		
White	30.7%	44.8%	31.6%	42.2%	50.2%	63.3%	30.8%	47.6%	42.3%	54.0%		
Black/African American	1.3%	2.5%	1.7%	3.1%	1.1%	0.8%	2.5%	4.5%	1.3%	1.8%		
American Indian/Alaska Native	0.1%	0.0%	0.1%	0.0%	0.2%	0.0%	0.1%	0.2%	0.2%	0.7%		
Asian	50.5%	39.9%	35.8%	25.4%	25.1%	20.1%	21.3%	22.6%	29.9%	27.6%		
Native Hawaiian/Other Pacific Islander	0.6%	0.2%	3.2%	4.5%	0.7%	0.4%	1.3%	2.2%	0.7%	0.9%		
Other	0.9%	N/A	0.8%	N/A	0.6%	N/A	0.9%	N/A	0.9%	N/A		
Two or More Races	5.1%	2.7%	5.0%	3.7%	6.4%	3.6%	4.3%	3.1%	6.1%	3.4%		

\*Total Population; Source: Redistricting Database for California, Published by Statewide Database on September 20, 2021

\*\*Citizen Voting Age Population (CVAP); Source: American Community Survey, 2015-2019 Data

## ► CONSIDERATIONS IN VOTING AREAS



Each area shall contain nearly equal number of inhabitants



Follow man-made and natural geographic features, as much as possible



Drawn to comply with the Federal Voting Rights Act



Respect incumbency, if possible



Compact and contiguous, as much as possible



Other local considerations

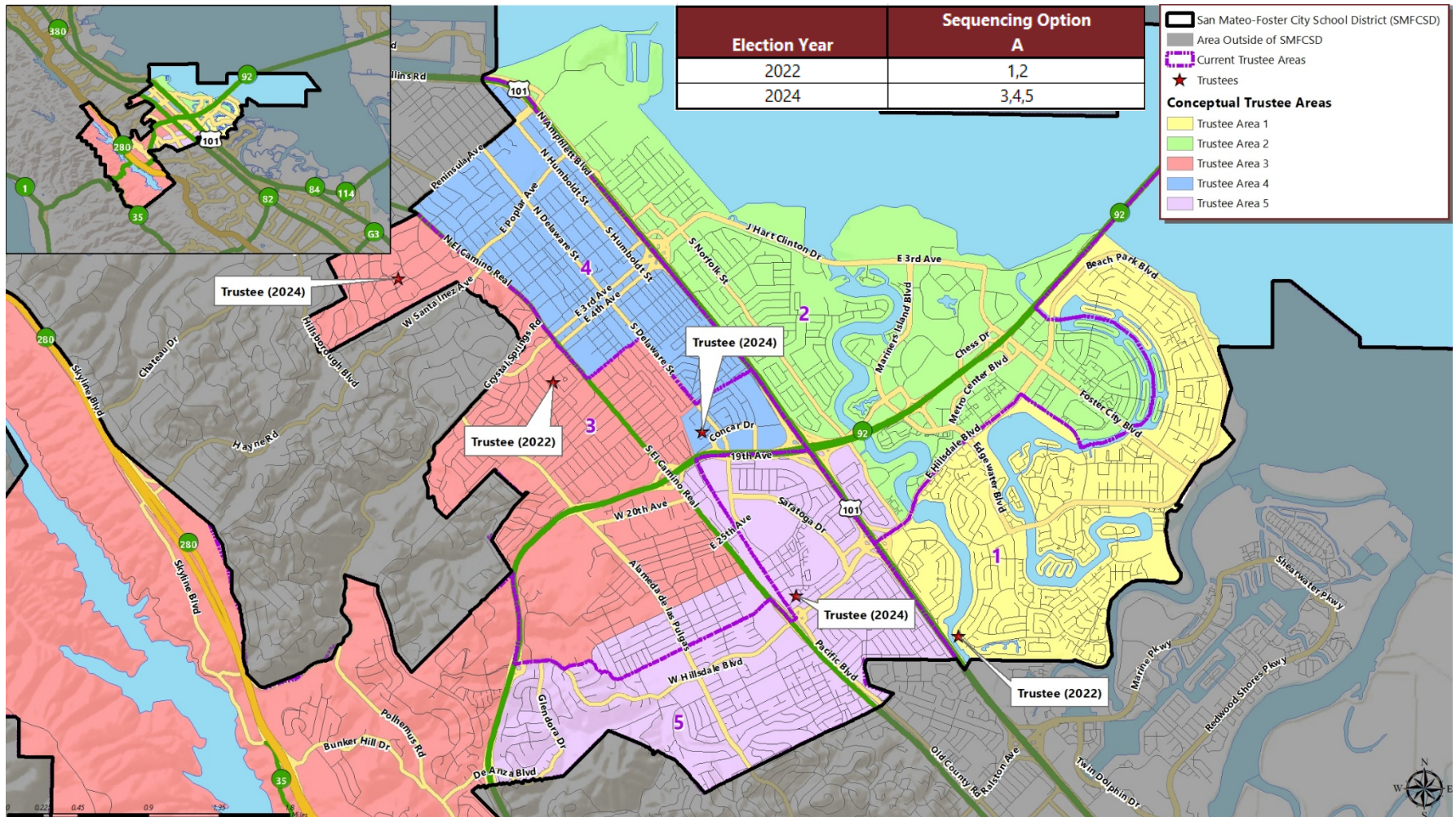


Respect communities of interest, as much as possible



## ► CONCEPTUAL TRUSTEE AREAS

### SCENARIO 1



## ► DEMOGRAPHICS

### SCENARIO 1

Total Population:	140,667	Ideal Trustee Area Size:	28,133	Variance:	4.2%
-------------------	---------	--------------------------	--------	-----------	------

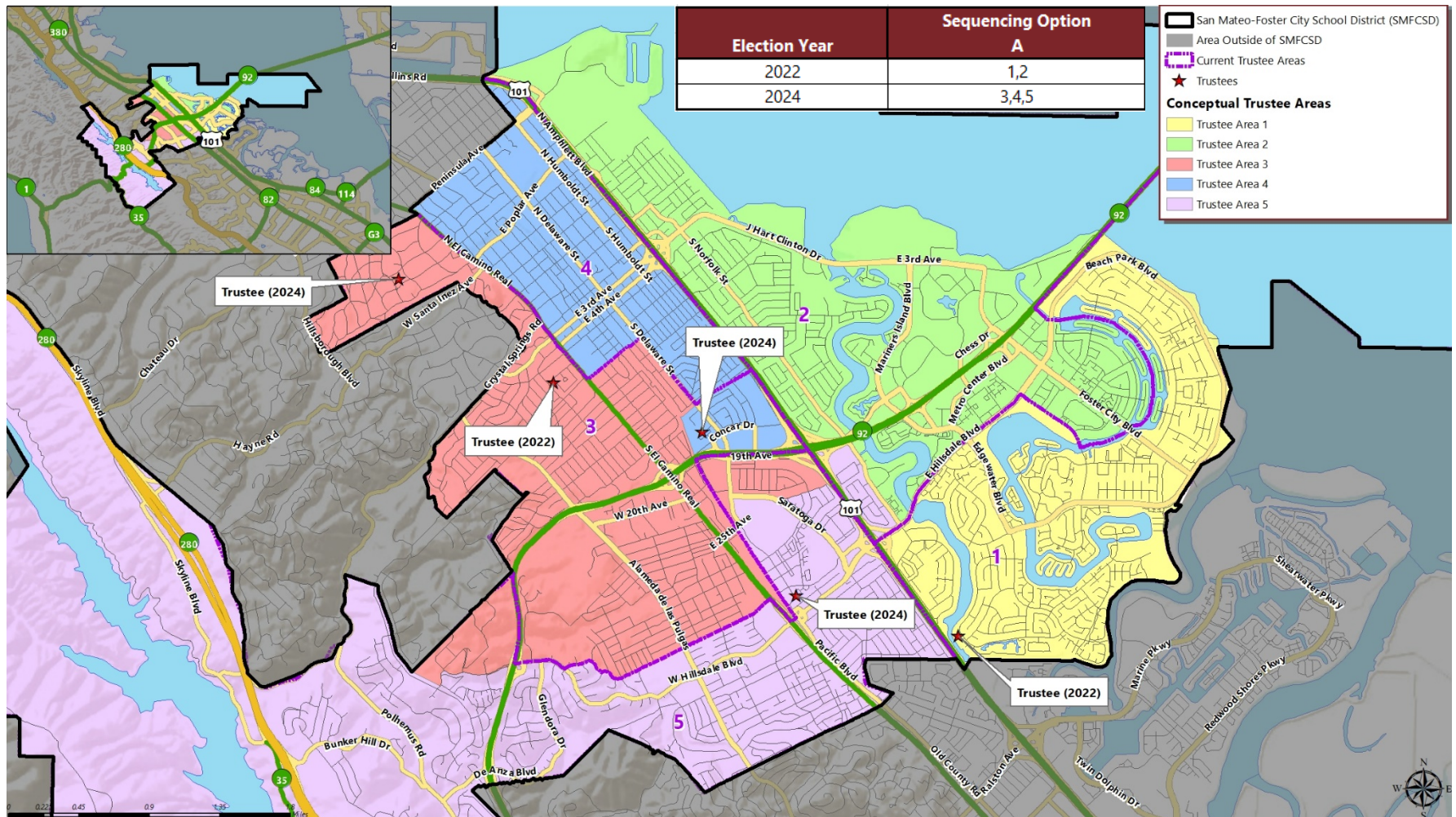
TRUSTEE AREA	Trustee Area 1		Trustee Area 2		Trustee Area 3		Trustee Area 4		Trustee Area 5	
TP* vs. CVAP**	TP	CVAP	TP	CVAP	TP	CVAP	TP	CVAP	TP	CVAP
Population	28,291	17,011	28,466	17,680	28,611	19,869	27,858	14,616	27,441	16,991
Population Variance	0.6%	N/A	1.2%	N/A	1.7%	N/A	-1.0%	N/A	-2.5%	N/A
Hispanic/Latino	10.9%	9.9%	21.3%	20.6%	13.1%	9.4%	38.0%	19.6%	21.7%	14.9%
White	30.7%	44.8%	31.8%	42.7%	51.8%	63.6%	30.6%	47.6%	40.7%	52.1%
Black/African American	1.3%	2.5%	1.7%	3.1%	0.9%	0.8%	2.4%	4.4%	1.4%	1.8%
American Indian/Alaska Native	0.1%	0.0%	0.1%	0.0%	0.1%	0.0%	0.1%	0.2%	0.2%	0.8%
Asian	50.5%	39.9%	36.0%	25.3%	26.4%	22.5%	22.2%	23.0%	28.2%	25.6%
Native Hawaiian/Other Pacific Islander	0.6%	0.2%	3.2%	4.6%	0.6%	0.4%	1.4%	2.1%	0.8%	1.0%
Other	0.9%	0.0%	0.8%	0.0%	0.6%	0.0%	0.9%	0.0%	1.0%	0.0%
Two or More Races	5.0%	2.7%	5.0%	3.7%	6.5%	3.3%	4.4%	3.2%	6.0%	3.6%

\*Total Population; Source: Redistricting Database for California, Published by Statewide Database on September 20, 2021

\*\*Citizen Voting Age Population (CVAP); Source: American Community Survey, 2015-2019 Data



## ► CONCEPTUAL TRUSTEE AREAS SCENARIO 2





## ► DEMOGRAPHICS

### SCENARIO 2

Total Population:	140,667	Ideal Trustee Area Size:	28,133	Variance:	2.7%
-------------------	---------	--------------------------	--------	-----------	------

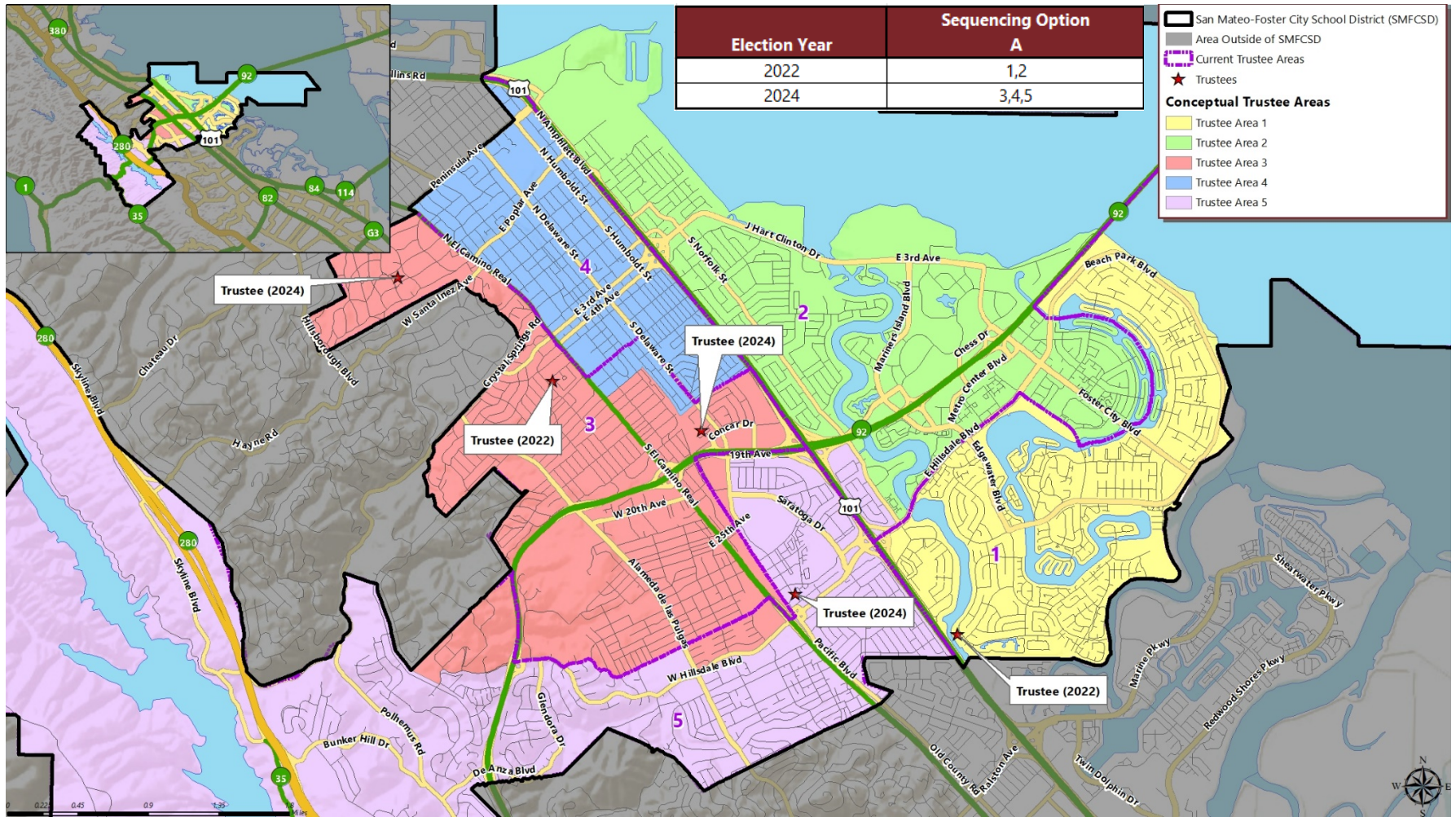
TRUSTEE AREA	Trustee Area 1		Trustee Area 2		Trustee Area 3		Trustee Area 4		Trustee Area 5	
TP* vs. CVAP**	TP	CVAP	TP	CVAP	TP	CVAP	TP	CVAP	TP	CVAP
Population	28,291	17,011	28,466	17,680	28,347	18,624	27,858	14,616	27,705	18,236
Population Variance	0.6%	N/A	1.2%	N/A	0.8%	N/A	-1.0%	N/A	-1.5%	N/A
Hispanic/Latino	10.9%	9.9%	21.3%	20.6%	16.6%	12.4%	38.0%	19.6%	18.1%	11.5%
White	30.7%	44.8%	31.8%	42.7%	50.0%	62.5%	30.6%	47.6%	42.6%	54.1%
Black/African American	1.3%	2.5%	1.7%	3.1%	1.1%	1.0%	2.4%	4.4%	1.2%	1.6%
American Indian/Alaska Native	0.1%	0.0%	0.1%	0.0%	0.2%	0.0%	0.1%	0.2%	0.1%	0.8%
Asian	50.5%	39.9%	36.0%	25.3%	24.3%	19.9%	22.2%	23.0%	30.3%	28.0%
Native Hawaiian/Other Pacific Islander	0.6%	0.2%	3.2%	4.6%	0.6%	0.7%	1.4%	2.1%	0.7%	0.7%
Other	0.9%	0.0%	0.8%	0.0%	0.7%	0.0%	0.9%	0.0%	0.9%	0.0%
Two or More Races	5.0%	2.7%	5.0%	3.7%	6.4%	3.6%	4.4%	3.2%	6.1%	3.4%

\*Total Population; Source: Redistricting Database for California, Published by Statewide Database on September 20, 2021

\*\*Citizen Voting Age Population (CVAP); Source: American Community Survey, 2015-2019 Data

► CONCEPTUAL TRUSTEE AREAS

**SCENARIO 3**



## ► DEMOGRAPHICS

### SCENARIO 3

Total Population:	140,667	Ideal Trustee Area Size:	28,133	Variance:	3.0%
-------------------	---------	--------------------------	--------	-----------	------

TRUSTEE AREA	Trustee Area 1		Trustee Area 2		Trustee Area 3		Trustee Area 4		Trustee Area 5	
TP* vs. CVAP**	TP	CVAP	TP	CVAP	TP	CVAP	TP	CVAP	TP	CVAP
Population	28,291	17,011	28,466	17,680	28,144	18,444	27,633	14,663	28,133	18,369
Population Variance	0.6%	N/A	1.2%	N/A	0.0%	N/A	-1.8%	N/A	0.0%	N/A
Hispanic/Latino	10.9%	9.9%	21.3%	20.6%	15.8%	12.4%	38.4%	19.1%	18.6%	11.9%
White	30.7%	44.8%	31.8%	42.7%	50.0%	63.1%	31.1%	48.2%	42.1%	53.1%
Black/African American	1.3%	2.5%	1.7%	3.1%	1.1%	0.8%	2.4%	4.6%	1.2%	1.7%
American Indian/Alaska Native	0.1%	0.0%	0.1%	0.0%	0.2%	0.0%	0.1%	0.2%	0.1%	0.8%
Asian	50.5%	39.9%	36.0%	25.3%	25.2%	19.7%	21.3%	22.8%	30.3%	28.3%
Native Hawaiian/Other Pacific Islander	0.6%	0.2%	3.2%	4.6%	0.6%	0.4%	1.3%	2.1%	0.8%	0.9%
Other	0.9%	0.0%	0.8%	0.0%	0.7%	0.0%	0.9%	0.0%	0.9%	0.0%
Two or More Races	5.0%	2.7%	5.0%	3.7%	6.3%	3.6%	4.5%	3.0%	6.0%	3.4%

\*Total Population; Source: Redistricting Database for California, Published by Statewide Database on September 20, 2021

\*\*Citizen Voting Age Population (CVAP); Source: American Community Survey, 2015-2019 Data





QUESTIONS

