



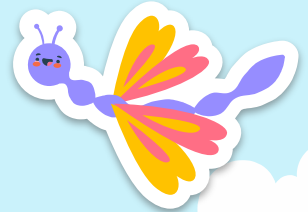
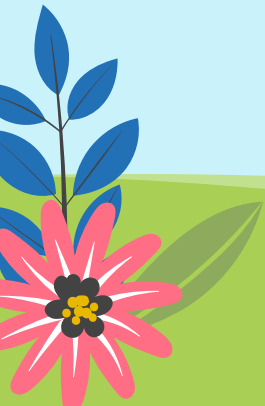
LGUSD Outdoor Classrooms Specifications



Strategic Objective #6

Sustainable Finance and Infrastructure

Enhance the outdoor classroom instructional space and providing reasonable use of natural resources and a sustainable maintenance plan.

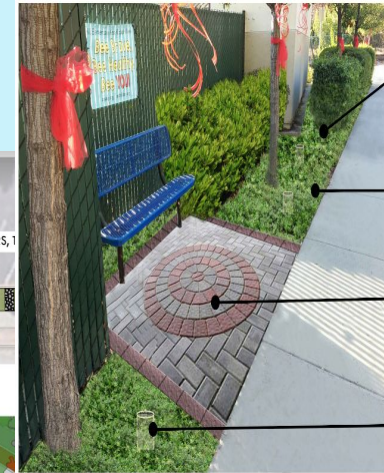
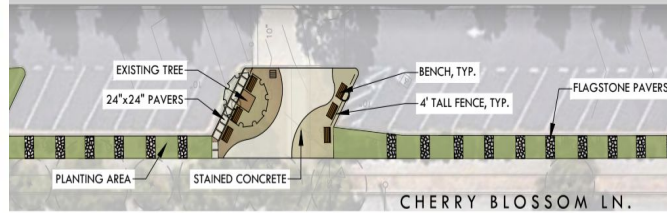


Approved Projects at Blossom Hill



① PROPOSED BENCHES

② STAINED CONCRETE



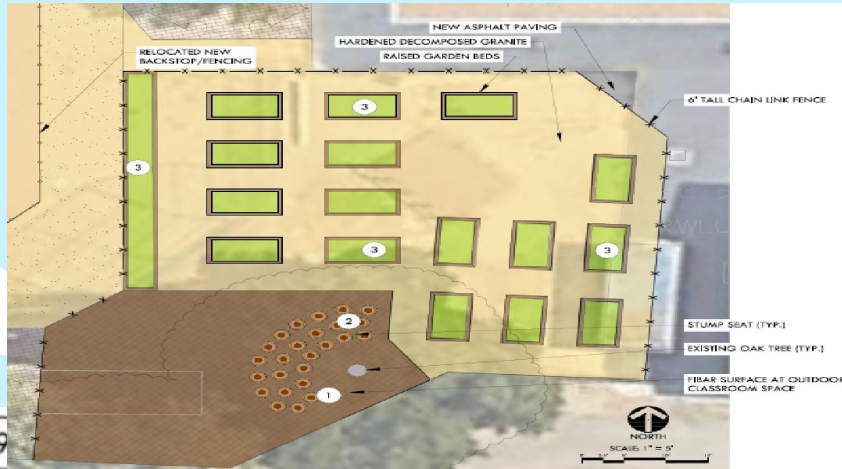
Approved Projects at Daves Avenue



6 FABRIC SHADE



Approved Projects at Van Meter



3 RAISED GARDEN BEDS



Bottlebrush
Callistemon viminalis 'Little John'
Height: 2' - 3'
Spread: 3' - 5'
Full Sun
Low water



Camellia x 'John Druceker' (red)
Camellia x 'Buttermint' (yellow)
Height: 2' - 3'
Spread: 3' - 5'
Full Sun/Partial Shade
Low water



SHRUB
Escallonia Hybrid
Escallonia 'Compacta'
Height: 2' - 3'
Spread: 2' - 3'
Full Sun/Partial Shade
Little to moderate water



Berberis
Mahonia aquifolium 'Skylark'
Height: 4' - 5'
Spread: 4' - 5'
Full Sun/Partial Shade
Moderate water



Mirror Plant
Mahonia repens 'County Park Red'
Height: 3'
Spread: 3'
Full Sun/Partial Shade
Moderate water



Proposed Courtyard Specifications

Product

Standard

LGUSD Upgrades

Grass

Cool Season-Shade Tolerant

Warm season-Drought Tolerant
Upgraded maintenance plan

Concrete

Standard concrete

Colored concrete

Surfacing for kinder playground

Engineered wood chips

Resilient rubber SBR base tiles topped with wear layer of EPDM rubber, meet critical fall heights

Resilient Surface for STEAM and Outdoor Classrooms

Grass, Dirt & Mulch

PE Foam, gravel and urethane binder, custom blend to eliminate SBR

Mulch

Engineered wood chips

Natural wood chip/fibered product
Metal frames with Natural surface

Benches

Metal frame benches

materials

Trees

Maintain all healthy mature trees

Deciduous-Location appropriate species and size and lower allergen replacements

Pavers

Concrete

Pavers can be engraved by site

Decomposed Granite

Loose granular product

Naturally produced/sourced from local quarry, hardened with polymer

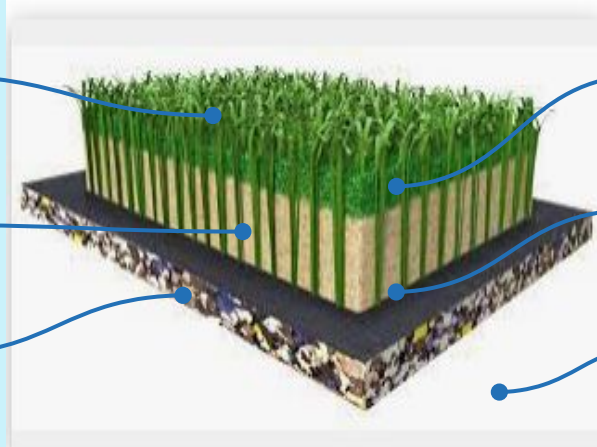


Synthetic Turf

Blade-Polyethylene and have UV stabilizers, reflective and antimicrobial fiber coatings to allow the fibers to be cooler, and prevents microbial buildup

Sand-Dust free pure silica sand with no coating or contaminants. Purpose is to provide weight and ballast to hold the fibers in place.

Pad-XPE Polyethylene foam that is a recycled product, comfortable surface with sufficient drainage. 25 Year Life



Infill-Sand and Natural Infill - Alternative infills can help reduce synthetic turf field temperatures by as much as 30 degrees compared to crumb rubber infill from used tires

Backing-Recyclable Polypropylene fabric, over 1/2 of the polymers used to coat and seal are biobased

Base Rock-Permeable to allow for soil expansion. Soil testing and storm water testing to determine if amendment or remediation needed.

Regulatory Standards -----LGUSD Upgrade

DSA-Provides building permit and monitors Geotechnical (soil) reports, Storm Water and Cal Green Code Compliance (Water conservation).

Soil and storm water testing not required but used as baseline to amend or remediate soil and monitor any runoff into the storm drain.

Consumer Product Safety
Commission-Surface materials & Padding -
Regulates playground products. Focused on fall impact
AMSI Standards, lead paint, other material based hazards.

Following European and US
product safety standards with
ASTM E108 Class A rating

EPA-Regulates the manufacture, processing and
distribution of chemicals.

All components meet US and European
standards for heavy metals and have no
detectable PFAS.

CA Prop 65-Requires business to provide warnings
about significant exposures to chemicals

All Specified products are free from
chemicals requiring Proposition 65
notification. No products contain lead

Next Steps Outdoor Classrooms



Board Decision

Outdoor Classrooms
Approved December
14, 2021



State DSA approval

Anticipated
2/28-4/22



Construction

Bidding 3/10-4/20
Contract approval 4/21
Construction 6/6-8/12



Maintenance

Ongoing
maintenance plan
followed



Draft Construction Schedule



ID	Task Name	Duration	Start	Finish	1/23/22	2/2/22	2/9/22	2/13/22	2/20/22	2/27/22	3/6/22	3/13/22	3/20/22	3/27/22	4/3/22	4/10/22	4/17/22	4/24/22	5/1/22	5/8/22	5/15/22	5/22/22	5/29/22	6/5/22	6/12/22	6/19/22	6/26/22	7/3/22	7/10/22	7/17/22	7/24/22	7/31/22	8/7/22	8/14/22	8/21/22	
1	DSA Approvals	40 days	Mon 2/28/22	Fri 4/22/22																																
2	Advertising & Bidding	30 days	Thu 3/10/22	Wed 4/20/22																																
3	District Board Meeting for Contract Approval	1 day	Thu 4/21/22	Thu 4/21/22																																
4	EXECUTE CONTRACT / PRODUCT SUBMITTAL REVIEW AND ORDERING / DELIVERIES	30 days	Mon 4/25/22	Fri 6/3/22																																
5	Begin Site Demolition and all Sitework	20 days	Mon 6/6/22	Fri 7/1/22																																
6	Complete Construction and Site Furnishing Installation	30 days	Mon 7/4/22	Fri 8/12/22																																
7	Project Punch List and Clean-up	5 days	Mon 8/15/22	Fri 8/19/22																																



Solar Project Status Update



Board Decision

Solar PPA Contract
approved December
2020



State DSA approval

Completed
7/1/2021-12/31/2021



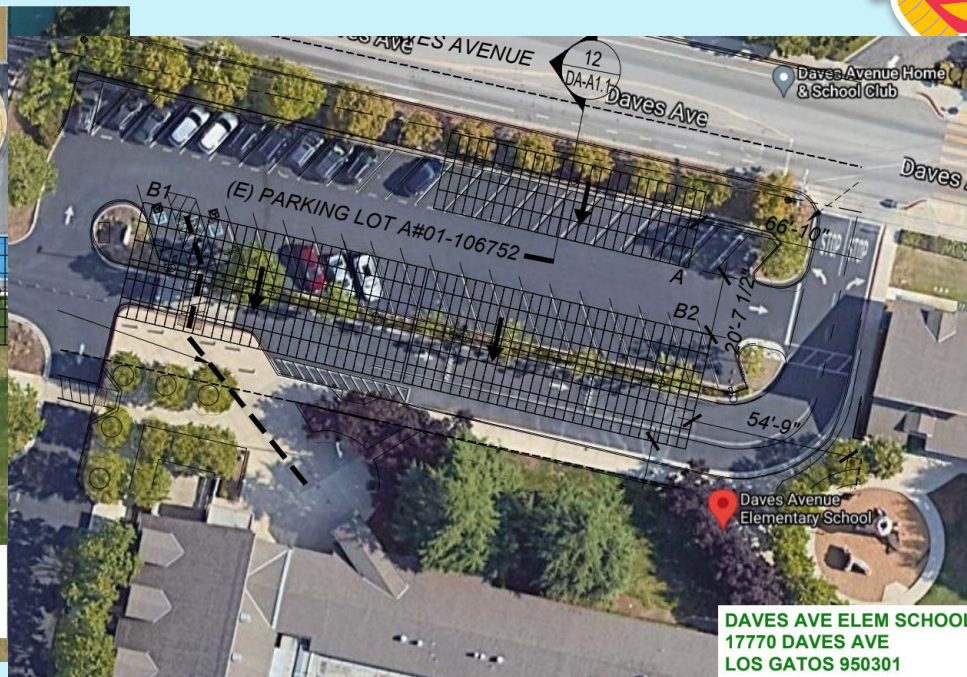
Construction

Bidding 1/21-2/21
Construction 3/1-8/12



PGE Interconnect & Maintenance

PGE Interconnect
12/31/22
Ongoing maintenance
provided by Forefront



Approved Solar Projects-Lexington & Van Meter



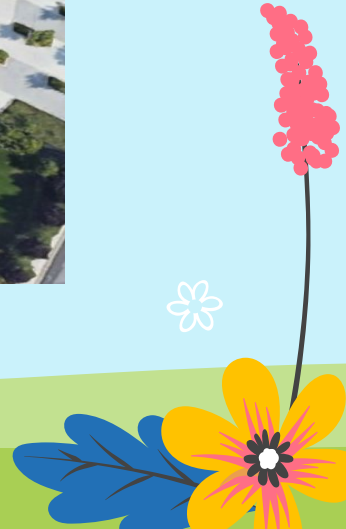
Pull load testing performed



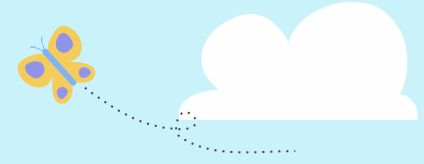
VAN METER ELEM SCHOOL
16445 LOS GATOS BLVD
LOS GATOS 950321



Approved Solar Projects-RJ Fisher



Solar Project Construction Dates



Blossom Hill

3/8-5/25



**Daves
Avenue**

5/24-8/12



Lexington

5/30-8/12



Van Meter

3/8-6/2



RJ Fisher

3/29-6/27



Meeting Dates for Playfields Discussion



Blossom Hill

HSC 3/2 @8:15
SSC 3/17 @3:00



Daves Avenue

HSC 3/18 @9:00
SSC 3/30 @3:00



Lexington

HSC 3/9 @8:40
SSC 3/17 @3:00



Van Meter

HSC 3/9 @3:30 Zoom
SSC 3/9 @3:30 Zoom



RJ Fisher

HSC 3/15 @5:30 Zoom
SAC 3/16 @5:30 Zoom



Thanks!

Do you have any questions?

youremail@freepik.com

+91 620 421 838

yourcompany.com



Please keep this slide for attribution

CREDITS: This presentation template was created by **Slidesgo**, including icons by **Flaticon** and infographics & images by **Freepik**

