



# **Student Services Climate and Wellness Updates**

## **LGUSD COVID Update**

**February 2022**


**Presented by**

**Misty Hartung, Director of Student Services  
and**

**Paul Johnson, Superintendent**



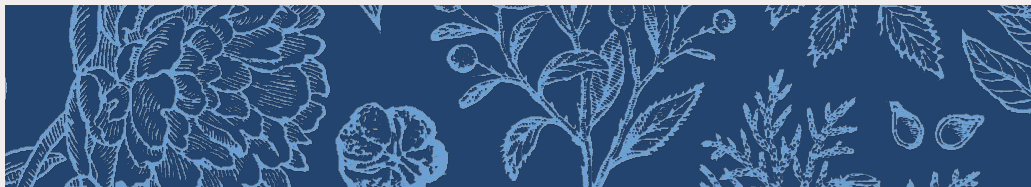
# Agenda

- 
1. Student Climate Check-In Data
  2. Mid Year SEL Updates
  3. Additional Updates/Information
  4. Covid Updates
    - a. Testing and Appreciations
    - b. Dashboard
    - c. Masking Update

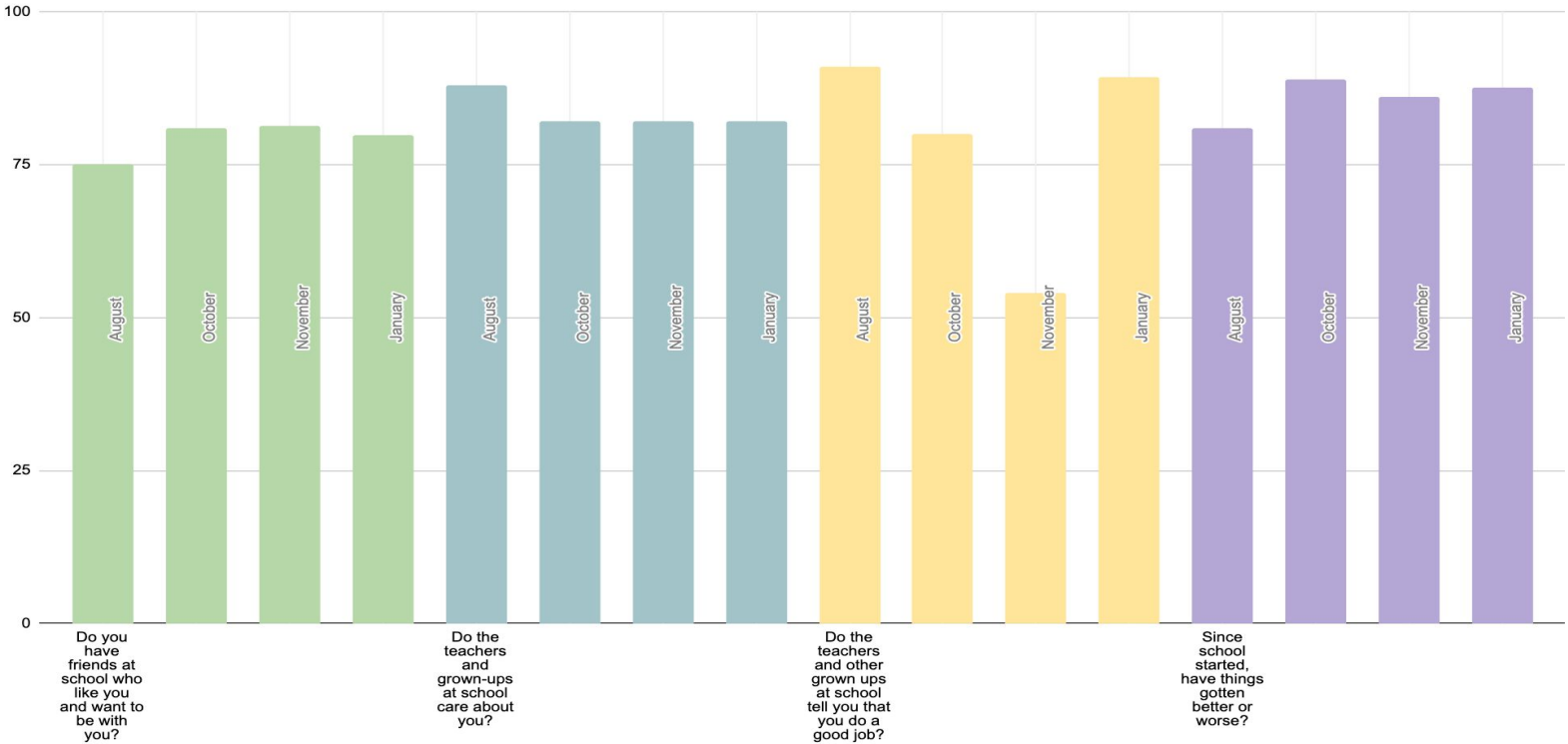
A decorative horizontal band at the top of the page featuring a dark blue background with intricate white line art of various plants, leaves, and berries.

1

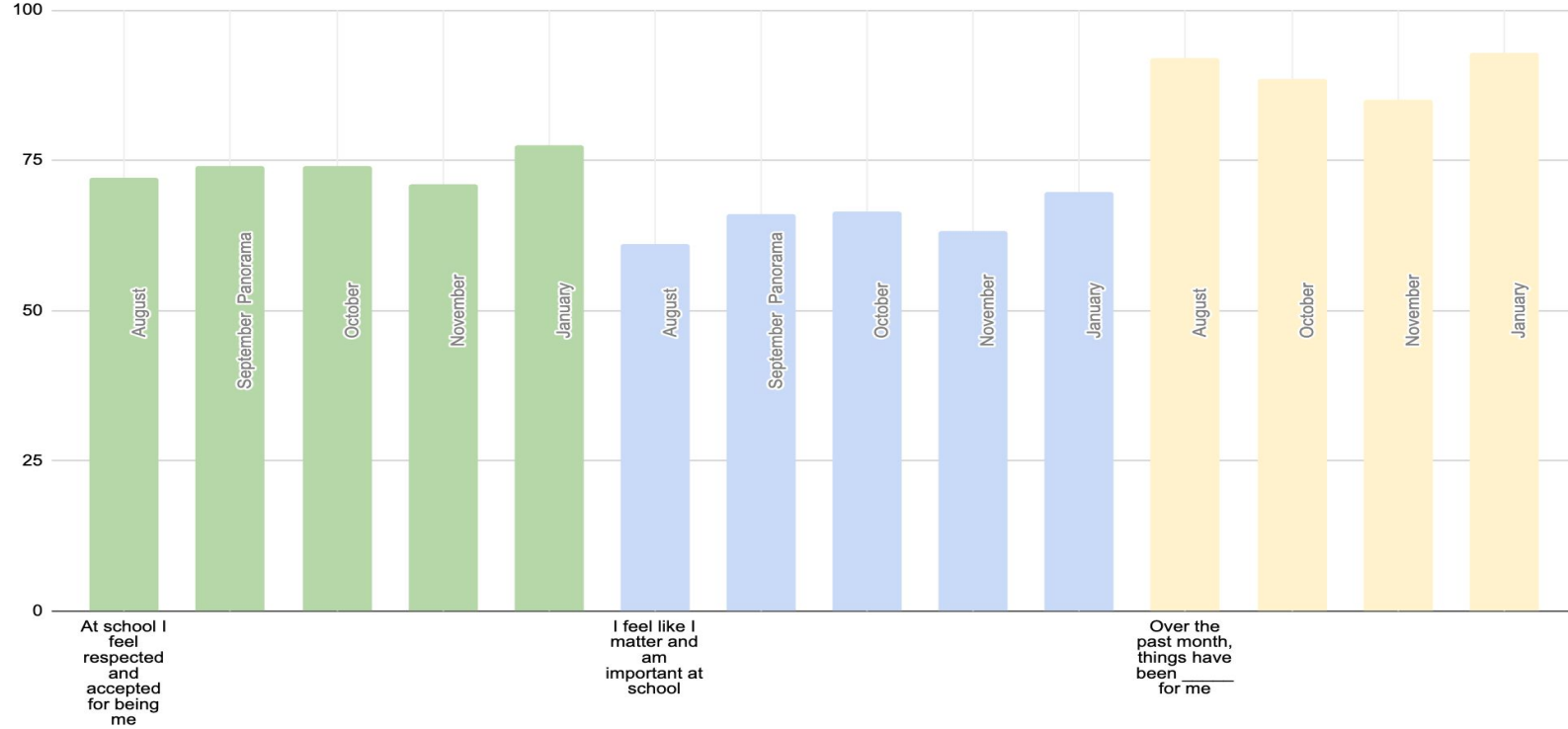
# Student Climate SEL Check-ins



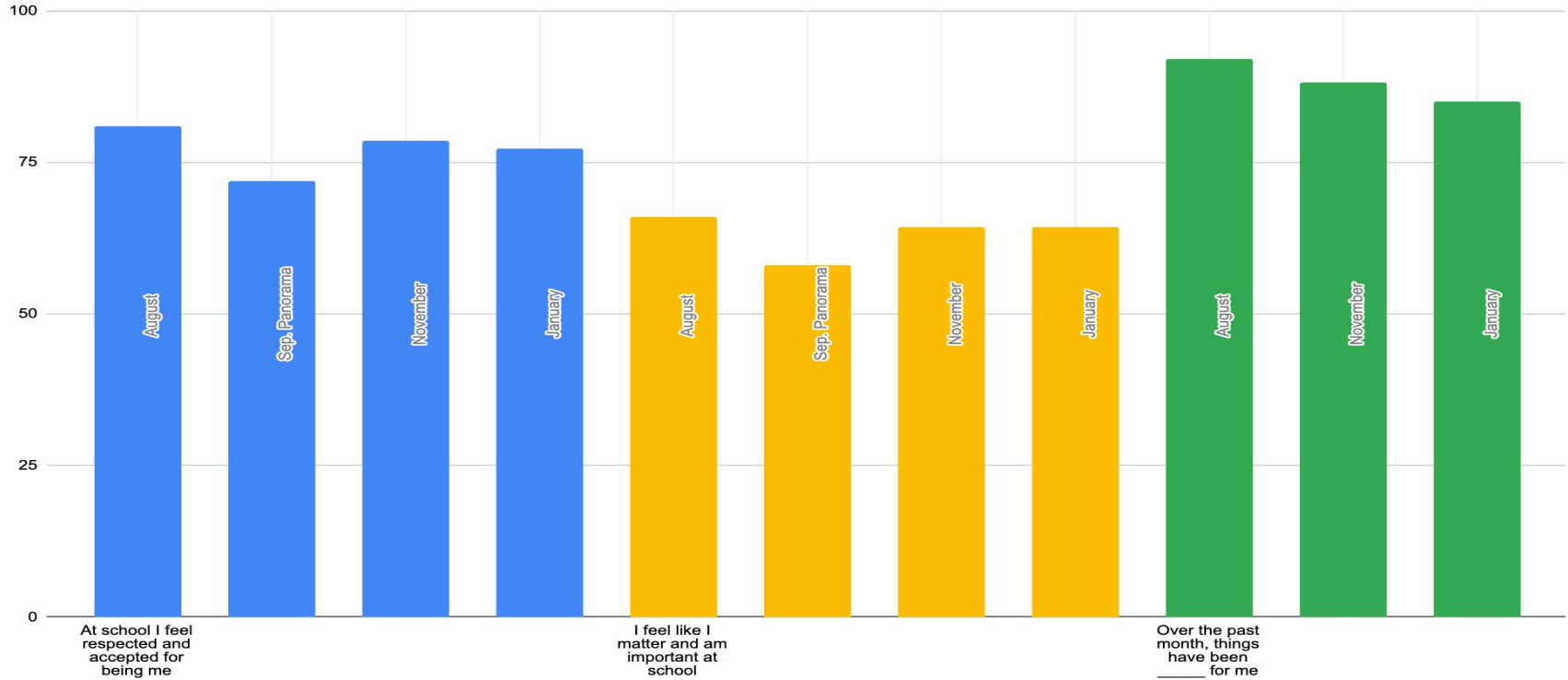
# ELEMENTARY K-2 SEL CHECK-IN DATA



## ELEMENTARY 3-5 SEL CHECK-IN DATA



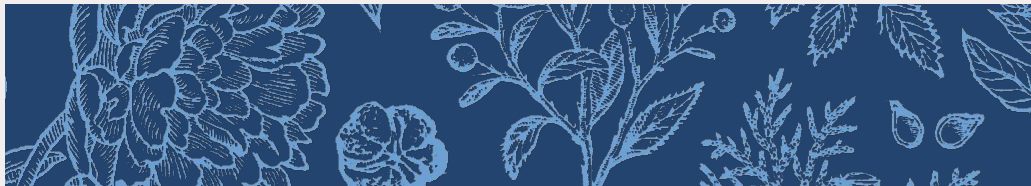
## MIDDLE SCHOOL SEL CHECK-IN DATA




A decorative blue floral pattern featuring various leaves and berries, located at the top of the slide.

2

# Mid-Year SEL Updates







**Our team strives to reduce stigma surrounding school-based counseling supports, build community and meet the social and emotional needs of students, families, and staff. We will specifically focus on developing skills to support individuals who have healthy relationships, are kind, empathetic, resilient, and develop a learners mindset for academics and self.**



# LGUSD SEL WELLNESS *by the numbers*

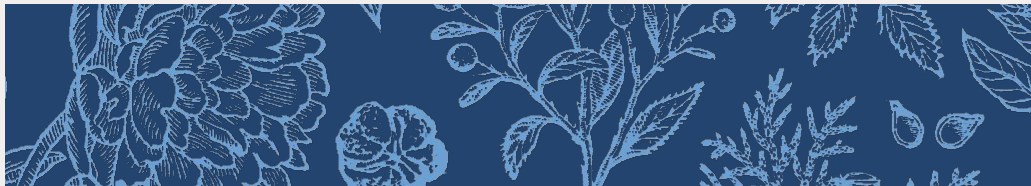
**43   651   25   379   1,020   542   815   40**

Club Sessions Offered	Individual Sessions Delivered	Small Groups	Classroom Lessons Taught	Check In Student Response Meetings	Parent Contacts/ Meetings	Teacher/ Team Consults or Meetings	Crisis Response
-----------------------------	-------------------------------------	-----------------	--------------------------------	---	---------------------------------	---	--------------------

A decorative header featuring a dark blue background with a white, intricate floral and leaf pattern. The pattern includes various leaves, berries, and small flowers.

3

# Additional Updates



# Strategic Plan Highlights Still to Come

Homework  
FAQ and Google Form  
Coming Soon

1

CAT Intervention  
Process Review

3

Homework Policy to the  
Board (April/May)

5

Youth Suicide  
Prevention  
Presentations for each  
School

2

Wellness Parent Presentations is  
March , April and May  
(Internet Safety, Gender, Resilience  
and Mental Health Topics)

4

May Student Climate  
Survey with Panorama  
(2nd administration)

6

# Additional Highlights



- Service Above Self and Kindness: American Heart Association Fundraiser \$21,000+
  - Students completed “Finn’s Mission” including hands only CPR.
- Be Seen and Heard Assemblies
- Fisher Wellness Center Launching 2-28-2022
- Homework Policy Draft for Community/Parent Forum



4

# COVID Updates





The background is a dark blue field filled with intricate, light blue botanical line drawings. These include various types of leaves, flowers, berries, and fruit sections, creating a dense, textured pattern.

**15,000**  
**+ 1,600 Antigen Tests**



# Appreciations

- **STUDENTS**
- **Parents**
- **More than 30 parent volunteers**
  - **Music Boosters Recruiting**
- **Instructional Aides**
- **Counselor**
- **Fisher Admin Assistant**
- **Facilities Admin Assistant**
- **3 Elementary Principals**
- **Roving Subs**
- **Health Clerk Team+2**
- **District Office Staff**
- **Fisher PE Teachers**
- **Ms. Babalis and Ms. Weisler**



# Dashboard

LGUSD COVID Dashboard 2021-2022 : LGUSD COVID Dashboard 2021-2022

Location	Number of Students	Number of Staff	Current Active Cases*		Cumulative Cases Since August 1, 2021	
			Students	Staff	Students	Staff
Elementary Schools	1560	146	15	1	211	21
Middle School	1037	86	7	0	223	12
District Office	n/a	27	N/A	0	N/A	3

*The LGUSD COVID Dashboard will be updated within 24 hours of reported cases.*

<b>Last Updated</b>	<b>2/11/22</b>					

# Updated Masking Guidance – California Department of Public Health



## Changes Taking Effect February 16, 2022:

- Universal masking shall remain required in only specified settings.
- Only unvaccinated persons are required to mask in all Indoor Public Settings. Fully vaccinated individuals are recommended to continue indoor masking when the risk may be high.

# Updated Masking Guidance

## Where are the specified settings?

Masks are required for all individuals in the following indoor settings, regardless of vaccination status...

- On public transit[5] (examples: airplanes, ships, ferries, trains, subways, buses, taxis, and ride-shares) and in transportation hubs (examples: airport, bus terminal, marina, train station, seaport or other port, subway station, or any other area that provides transportation)
- **Indoors in K-12 schools[6], childcare[7]**
- Emergency[8] shelters and cooling and heating centers[9]
- Healthcare settings[10]
- State and local correctional facilities and detention centers[11]
- Homeless shelters[12]
- Long Term Care Settings & Adult and Senior Care Facilities[13]



# Updated Masking Guidance – Santa Clara County Public Health



**Feb. 9th**

- The County of Santa Clara public health officials announced that local indoor masking requirements will remain in place and provided updated criteria for lifting masking requirements.
- The County anticipates lifting universal indoor masking requirements in a matter of weeks. (for general non-school public)

LGUSD will monitor both CDPH and SCCPH for impacts to school guidance.

# Does the mandate change the school masking rules for outside?



No. The mandate only applies to indoor settings.

CDPH guidance and LGUSD practice is that masks are optional outside. Students may remove their mask during outdoor pe, outdoor classroom activities, or outdoor learning activities (i.e., gardening, small group work, filming/recording, etc.).



# Does LGUSD have the authority to disregard State and County public health orders?



No. The power and authority for public health does not lie with the Board of Trustees or Superintendent. From the onset of the pandemic, LGUSD has been required to follow public health orders.

## Can LGUSD require LESS than a CDPH mandate?



No, LGUSD is required to fully implement a CDPH mandate and does not have the authority to minimize a public health order.

## **Will LGUSD require more or a “stricter” requirement than CDPH or County Public Health?**

No, LGUSD explicitly follows state and county public health guidelines and mandates.

# Does Santa Clara Public Health have the authority to require additional or “stricter” health mandates than CDPH?

Yes, since the start of the pandemic, Santa Clara Public Health has had the authority to enact “stricter” health mandates than CDPH, that schools are required to follow.

CDPH School Guidance notes:

“Stricter guidance may be issued by local public health officials or other authorities.”

<https://www.cdph.ca.gov/Programs/CID/DCDC/Pages/COVID-19/K-12-Guidance-2021-22-School-Year.aspx>



# Questions